

Basin Environmental Service Technologies, LLC

3100 Plains Highway
P. O. Box 301
Lovington, New Mexico 88260

jwlowry@basinenv.com

Office: (575) 396-2378 Fax: (575) 396-1429



REMEDIATION SUMMARY AND RISK-BASED SITE CLOSURE REQUEST

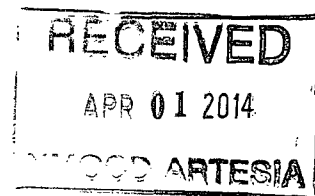
BOPCO, LP
POKER LAKE UNIT #183 FLOW LINE
Eddy County, New Mexico
Unit Letter "O" (SW/SE), Section 6, Township 24 South, Range 30 East
Latitude 32.240774° North, Longitude 103.918504° West
NMOCD Reference #2RP-_____

Prepared For:

BOPCO, LP
522 W. Mermod, Suite 704
Carlsbad, New Mexico 88220

Prepared By:
Basin Environmental Service Technologies, LLC
3100 Plains Highway
Lovington, New Mexico 88260

March 2014



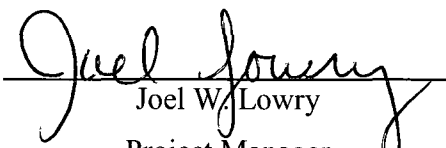

Joel W. Lowry
Project Manager

TABLE OF CONTENTS

1.0 INTRODUCTION AND BACKGROUND INFORMATION.....	1
2.0 NMOCD SITE CLASSIFICATION.....	1
3.0 SUMMARY OF SOIL REMEDIATION ACTIVITIES.....	2
4.0 QA/QC PROCEDURES.....	3
4.1 Soil Sampling.....	3
4.2 Decontamination of Equipment.....	3
4.3 Laboratory Protocol.....	3
5.0 SITE CLOSURE REQUEST.....	3
6.0 LIMITATIONS.....	4
7.0 DISTRIBUTION.....	5

FIGURES

Figure 1 – Site Location Map

Figure 2 – Site & Sample Location Map

TABLES

Table 1 – Concentrations of Benzene, BTEX, TPH & Chloride in Soil

APPENDICES

Appendix A – Release Notification and Corrective Action (Form C-141)

Appendix B – Photographs

Appendix C – Laboratory Analytical Reports

1.0 INTRODUCTION & BACKGROUND INFORMATION

Basin Environmental Service Technologies, LLC (Basin), on behalf of BOPCO, LP (BOPCO), has prepared this *Remediation Summary & Risk-Based Site Closure Request* for the release site known as Poker Lake Unit (PLU) #183 Flow Line. The legal description of the release site is Unit Letter "O" (SW/SE), Section 6, Township 24 South, Range 30 East, in Eddy County, New Mexico. The geographic coordinates of the release site are 32.240774° North latitude and 103 918504° West longitude. The property affected by the release is owned by the United States Department of the Interior - Bureau of Land Management (BLM). A "Site Location Map" is provided as Figure 1.

On September 2, 2012, BOPCO discovered a release had occurred on the PLU #183 flow line. The release was attributed to external corrosion. The "Release Notification and Corrective Action" (Form C-141) indicated approximately three barrels (3 bbls) of crude oil and five barrels (5 bbls) of produced water were released, affecting approximately two hundred square feet (200 ft²) of lease road. During initial response activities, approximately three barrels (3 bbls) of fluid was recovered and the saturated soil was removed from the road way and placed on a nearby well pad before being transported to an NMOCD-approved disposal facility. The affected section of pipeline has since been replaced. The Form C-141 is provided as Appendix A. General photographs of the release site are provided as Appendix B.

2.0 NMOCD SITE CLASSIFICATION

A search of the New Mexico Water Rights Reporting System (NMWRRS) database maintained by the New Mexico Office of the State Engineer (NMOSE) indicated information was unavailable for Section 6, Township 24 South, Range 30 East. A depth to groundwater reference map utilized by the NMOCD indicates groundwater should be encountered at approximately one hundred and seventy-five feet (175') below ground surface (bgs). Based on the NMOCD ranking system, zero (0) points will be assigned to the site as a result of this criterion.

A search of the NMWRRS database indicated there are no water wells within 1,000 feet of the release. Based on the NMOCD ranking system, zero (0) points will be assigned to the site as a result of this criterion.

There are no surface water bodies within 1,000 feet of the release. Based on the NMOCD ranking system, zero (0) points will be assigned to the site as a result of this criterion.

NMOCD guidelines indicate the PLU #183 Flow Line release site has an initial ranking score of zero (0) points. The soil remediation levels for a site with a ranking score of zero (0) points are as follows:

- Benzene – 10 mg/Kg (ppm)
- BTEX – 50 mg/Kg (ppm)
- TPH – 5,000 mg/Kg (ppm)

The New Mexico Administrative Code (NMAC) does not currently specify a remediation level for chloride concentrations in soil. Chloride remediation levels are set by the NMOCD on a site-specific basis.

3.0 SUMMARY OF SOIL REMEDIATION ACTIVITIES

On February 20, 2014, Basin began excavating impacted soil at the release site. The floor and sidewalls of the excavation were advanced until field tests suggested concentrations of benzene, toluene, ethylbenzene and xylene (BTEX), total petroleum hydrocarbons (TPH) and chloride were less than NMOCD Regulatory Standards. Excavated material was stockpiled on-site, pending final disposition.

On February 20, 2014, five (5) soil samples (SP #1 @ 2', SP #2 @ 2', ESW #1, SSW #1 and NSW #1) were collected from the release site and submitted to Cardinal Laboratories of Hobbs, New Mexico, for analysis of chloride concentrations. Laboratory analytical results indicated chloride concentrations ranged from 2,480 ppm for soil sample SP#1 @ 2' to 256 ppm SP#2 @ 2'. Soil sample SP #2 @ 2' was also analyzed for concentrations of BTEX and TPH, which were determined to be less than the appropriate laboratory method detection limit (MDL). The excavation was advanced in the areas represented by soil samples SP 1 @ 2' and SSW #1. A summary of "Concentrations of Benzene, BTEX, TPH and Chloride in Soil" is provided in Table 1. A "Site and Sample Location Map" is provided as Figure 2. Laboratory analytical reports are provided as Appendix C.

On February 26, 2014, a test trench (TT-1) was advanced in the floor of the excavation at approximately five feet (5') bgs. During the advancement of the test trench, five (5) soil samples (TT-1 @ 5', TT-1 @ 9', TT-1 @ 15', TT-1 @ 17' and TT-1 @ 18') were collected and submitted to the laboratory for analysis of chloride concentrations. Laboratory analytical results indicated chloride concentrations ranged from 7,120 ppm for soil sample TT-1 @ 9' to 432 ppm for soil sample TT-1 @ 17'. Soil samples TT-1 @ 5' and TT-1 @ 18' were also analyzed for concentrations of TPH. Laboratory analytical results indicated soil samples TT-1 @ 5' and TT-1 @ 18' exhibited TPH concentrations of 12.0 and less than the laboratory MDL, respectively. Soil sample TT-1 @ 5' was also analyzed for concentrations of BTEX, which were determined to be less than the laboratory MDL. Based on laboratory analytical results from the collected soil samples, it was determined that vertical delineation had been achieved.

In addition, two (2) confirmation soil samples (WSW (In-Situ) and SSW #1b) were collected from the excavation and submitted to the laboratory for analysis of chloride concentrations. Laboratory analytical results indicated concentrations ranged from 1,220 ppm for soil sample WSW (In-Situ) to 624 ppm for soil sample SSW #1b. Further excavation to the west was limited due to the presence of a heavily used oilfield access road.

On February 27, 2014, approximately sixty cubic yards (60 yd³) of impacted material was excavated and transported to Lea Land, LLC (NMOCD Permit #WM-01-035) for disposal.

On February 28, 2014, on receiving NMOCD approval, the excavation was backfilled with locally purchased, non-impacted material. At the request of the NMOCD, a one-foot (1') layer of compacted caliche was installed in the floor of the excavation at approximately five feet (5') bgs.

Prior to backfilling, the final dimensions of the excavation were approximately twelve feet (12') in width, thirty-two feet (32') in length and five feet (5') in depth.

4.0 QA/QC PROCEDURES

4.1 Soil Sampling

Soil samples were delivered to Cardinal Laboratories, Inc., in Hobbs, New Mexico, for BTEX, TPH and/or chloride analyses using the methods described below:

- BTEX concentrations in accordance with EPA Method SW-846 8021b
- TPH concentrations in accordance with EPA Method SW-846 8015M
- Chloride concentrations in accordance with EPA Method 4500 Cl-B

4.2 Decontamination of Equipment

Cleaning of the sampling equipment was the responsibility of the environmental technician. Prior to use, and between each sample, the sampling equipment was cleaned with Liqui-Nox® detergent and rinsed with distilled water.

4.3 Laboratory Protocol

The laboratory was responsible for proper QA/QC procedures after signing the chain-of-custody form(s). These procedures were either transmitted with the laboratory reports or are on file at the laboratory.

5.0 SITE CLOSURE REQUEST

Remediation activities conducted at the PLU #183 Flow Line release site met the objectives set forth by the NMOCD. Further excavation was limited due to the presence of a widely used oil field access road and numerous active pipelines. Basin recommends BOPCO provide the NMOCD Artesia District Office and BML a copy of this *Remediation Summary and Risk-Based Site Closure Request* and request the NMOCD grant site closure to the PLU #183 Flow Line release site.

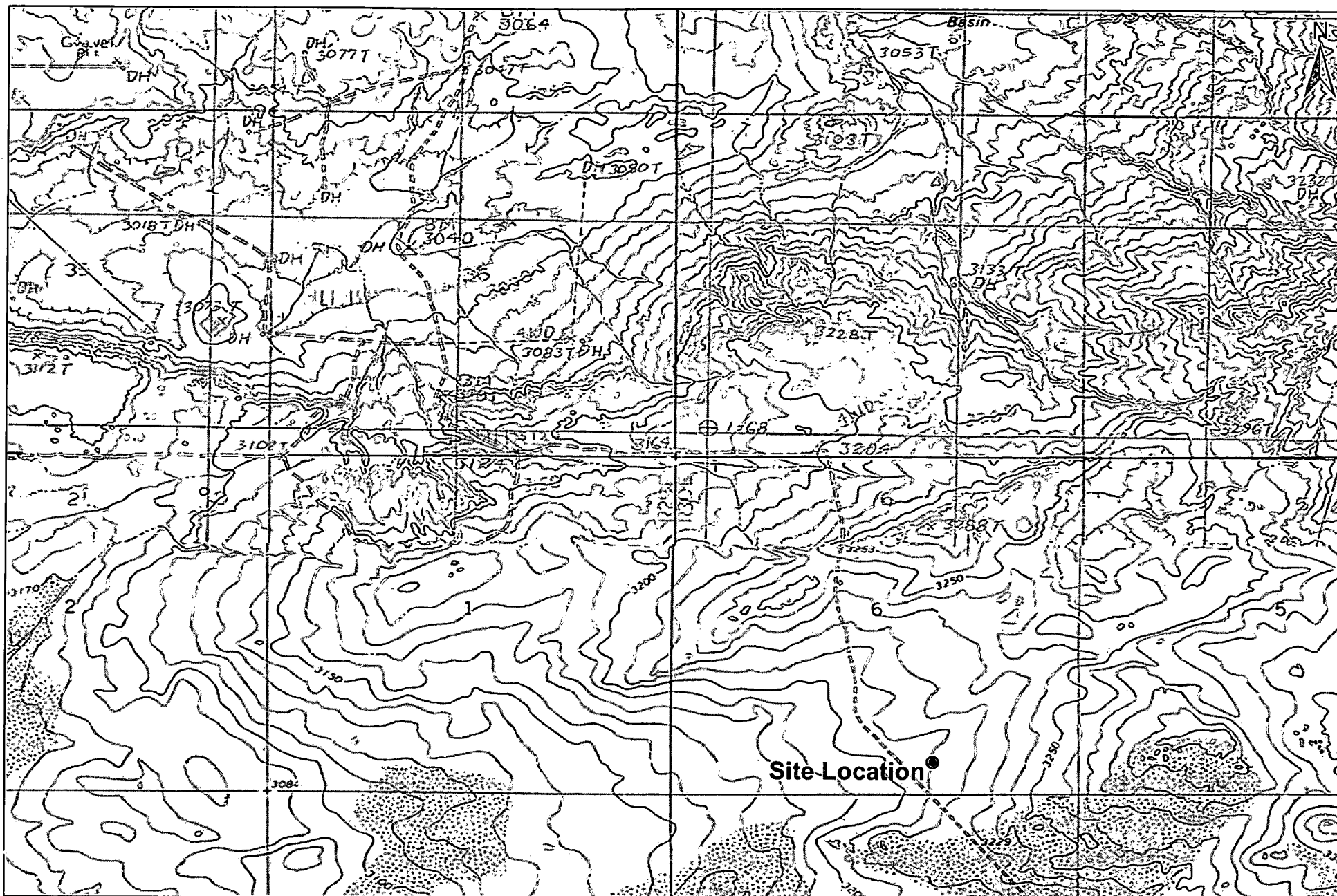
6.0 LIMITATIONS

Basin Environmental Service Technologies, LLC, has prepared this *Remediation Summary and Risk-Based Site Closure Request* to the best of its ability. No other warranty, expressed or implied, is made or intended. Basin has examined and relied upon documents referenced in the report and on oral statements made by certain individuals. Basin has not conducted an independent examination of the facts contained in referenced materials and statements. Basin has presumed the genuineness of these documents and statements and that the information provided therein is true and accurate. Basin has prepared this report in a professional manner, using the degree of skill and care exercised by similar environmental consultants. Basin notes that the facts and conditions referenced in this report may change over time, and the conclusions and recommendations set forth herein are applicable only to the facts and conditions as described at the time of this report.

This report has been prepared for the benefit of BOPCO, LP. The information contained in this report, including all exhibits and attachments, may not be used by any other party without the express consent of Basin Environmental Service Technologies, LLC, and/or BOPCO, LP.

7.0 DISTRIBUTION:

- Copy 1: Mike Bratcher
New Mexico Energy, Minerals and Natural Resources Department
Oil Conservation Division (District 2)
1301 E. Grand Avenue
Artesia, NM 88210
- Copy 2: James Amos
Bureau of Land Management
602 E. Greene Street
Carlsbad, New Mexico 88220
- Copy 3: Tony Savoie
BOPCO, LP
522 W. Mermod, Suite 704
Carlsbad, NM 88220
- Copy 4: Basin Environmental Service Technologies, LLC
P.O. Box 301
Lovington, NM 88260



1,000 500 0 1,000 2,000
 Distance in Feet

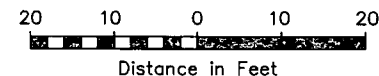
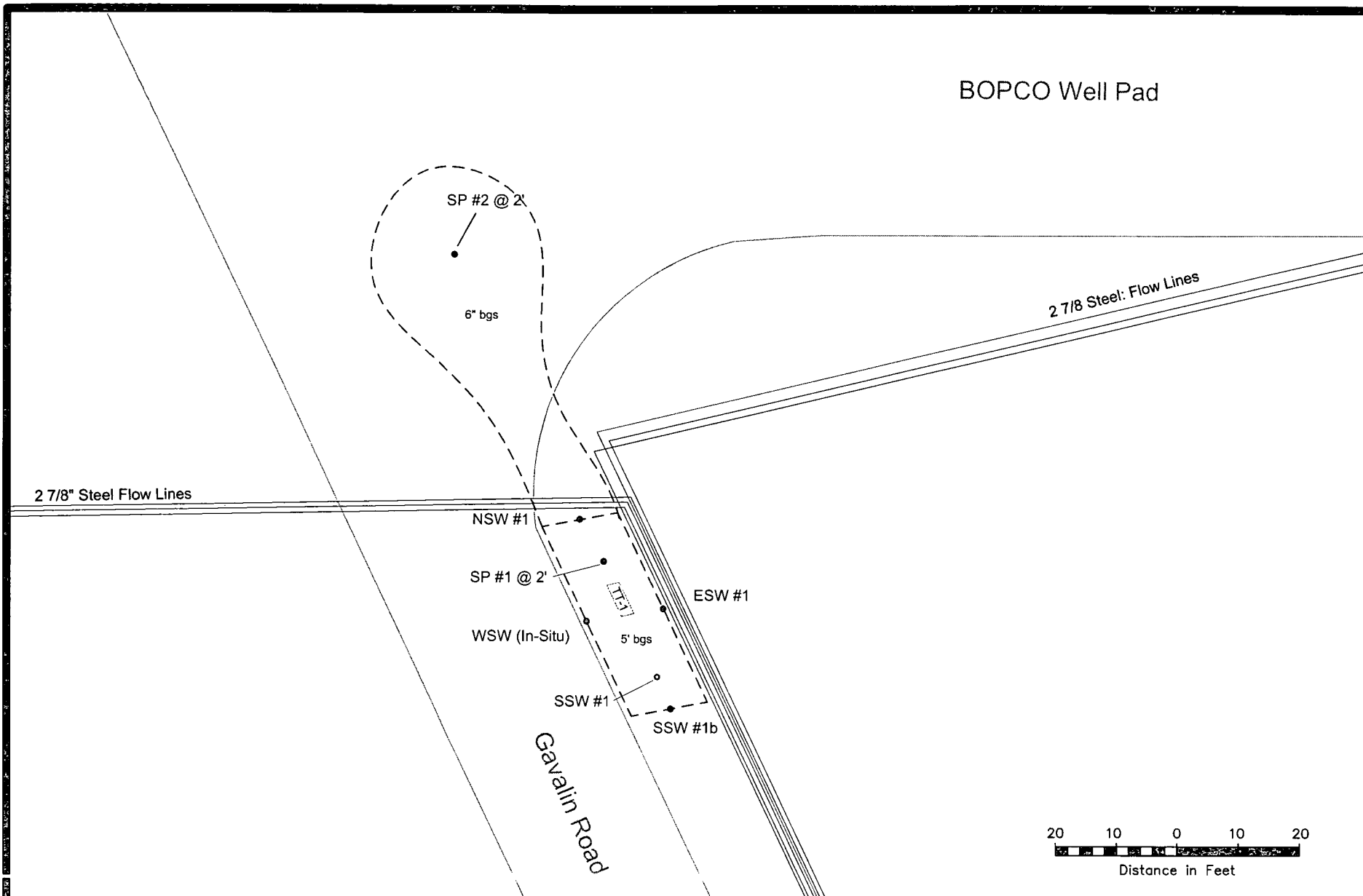
Figure 2
Site Location Map
BOPCO, LP
Poker Lake Unit #183 Flow Line
Eddy County, New Mexico



Basin Environmental Service Technologies, LLC
 3100 Plains Hwy.
 Lovington, NM 88260

Drawn By: BJA
 March 14, 2014

Checked By: JWJ
 Scale: 1" = 2,000'



Legend:

- Sample Location
- Caliche Road
- - - Excavation Extent
- Pipeline

Figure 2

Site and Sample Location Map
BOPCO, LP
Poker Lake Unit #183 Flow Line
Eddy County, New Mexico

Basin Environmental Services

Prep By: JWJ	Checked By: BJA
March 5, 2014	Scale 1" = 20'

TABLE 1

CONCENTRATIONS OF BENZENE, BTEX, TPH & CHLORIDES IN SOIL

BOPCO, LP
 PLU #183 FLOWLINE
 EDDY COUNTY, NEW MEXICO

SAMPLE LOCATION	SAMPLE DEPTH (BGS)	SAMPLE DATE	SOIL STATUS	METHOD: EPA SW 846-8021B, 5030					METHOD: 8015M			TOTAL TPH C ₆ -C ₃₅ (mg/Kg)	4500 CI-B CHLORIDE (mg/Kg)
				BENZENE (mg/Kg)	TOLUENE (mg/Kg)	ETHYL-BENZENE (mg/Kg)	TOTAL XYLENES (mg/Kg)	TOTAL BTEX (mg/Kg)	GRO C ₆ -C ₁₂ (mg/Kg)	DRO C ₁₂ -C ₂₈ (mg/Kg)	ORO C ₂₈ -C ₃₅ (mg/Kg)		
SP #1 @ 2'	2'	2/20/2014	Excavated	-	-	-	-	-	-	-	-	-	2,480
SP #2 @ 2'	2'	2/20/2014	In-Situ	<0.050	<0.050	<0.050	<0.150	<0.300	<10.0	<10.0	<10.0	<10.0	256
ESW #1	3'	2/20/2014	In-Situ	-	-	-	-	-	-	-	-	-	336
SSW #1	3'	2/20/2014	Excavated	-	-	-	-	-	-	-	-	-	1,150
NSW #1	3'	2/20/2014	In-Situ	-	-	-	-	-	-	-	-	-	1,070
TT-1 @ 5'	5'	2/26/2014	In-Situ	<0.050	<0.050	<0.050	<0.150	<0.300	<10.0	<10.0	12.0	12.0	4,000
TT-1 @ 9'	9'	2/26/2014	In-Situ	-	-	-	-	-	-	-	-	-	7,120
TT-1 @ 15'	15'	2/26/2014	In-Situ	-	-	-	-	-	-	-	-	-	1,540
TT-1 @ 17'	17'	2/26/2014	In-Situ	-	-	-	-	-	-	-	-	-	432
TT-1 @ 18'	18'	2/26/2014	In-Situ	-	-	-	-	-	<10.0	<10.0	<10.0	<10.0	688
WSW (In-Situ)	3'	2/26/2014	In-Situ	-	-	-	-	-	-	-	-	-	1,220
SSW #1b	3'	2/26/2014	In-Situ	-	-	-	-	-	-	-	-	-	624
NMOCD Criteria				10				50				5,000	1,000

- = Not analyzed.

District I
1625 N. French Dr., Hobbs, NM 88240
District II
811 S. First St., Artesia, NM 88210
District III
1700 Brazos Road, Aztec, NM 87410
District IV
1220 S. St. Francis Dr., Santa Fe, NM 87505

State of New Mexico
Energy Minerals and Natural Resources

Oil Conservation Division
1220 South St. Francis Dr.
Santa Fe, NM 87505

Form C-141
Revised August 8, 2011

Submit 1 Copy to appropriate District Office in
accordance with 19.15.29 NMAC.

Release Notification and Corrective Action

OPERATOR

☒ Initial Report ☐ Final Report

Name of Company: BOPCO, L.P.	Contact: Tony Savoie
Address: 522 W. Mermod, Suite 704 Carlsbad, N.M. 88220	Telephone No. 575-887-7329
Facility Name: PLU-183 Flow line spill location is 1700 ft. N.W. of the well location on Rawhide Road	Facility Type: Exploration and Production

Surface Owner: Federal	Mineral Owner: Federal	API No. 30-015-33224
------------------------	------------------------	----------------------

LOCATION OF RELEASE

Unit Letter O	Section 6	Township 24S	Range 30 E	Feet from the	North/South Line	Feet from the	East/West Line	County Eddy
------------------	--------------	-----------------	---------------	---------------	------------------	---------------	----------------	----------------

Latitude N 32.240774 Longitude W 103.918504

NATURE OF RELEASE

Type of Release: Produced water and crude oil	Volume of Release: 3 bbls crude oil and 5 bbls. produced water	Volume Recovered: 3 bbls total fluid
Source of Release: 2 7/8 inch flow line	Date and Hour of Occurrence: 9/2/12 time unknown	Date and Hour of Discovery: 9/2/12 8:00 a.m.
Was Immediate Notice Given? <input type="checkbox"/> Yes <input type="checkbox"/> No <input checked="" type="checkbox"/> Not Required	If YES, To Whom?	
By Whom? a Watercourse Reached? <input type="checkbox"/> Yes <input checked="" type="checkbox"/> No	Date and Hour: If YES, Volume Impacting the Watercourse.	RECEIVED SEP 06 2012 NMOCD ARTESIA

If a Watercourse was Impacted, Describe Fully.*

Describe Cause of Problem and Remedial Action Taken.*

The 2 7/8 inch flow developed a leak due to external corrosion. A temporary leak clamp was installed on the pipe.

Describe Area Affected and Cleanup Action Taken.*

The spill occurred in the lease road, approximately 200 sq. ft. was affected by the release and response activities. The saturated soil was removed from the road way and placed on a nearby well pad. Clean caliche was used to cover the area for traffic use. The spill will be remediated in accordance to the NMOCD recommended guidelines for spills.

I hereby certify that the information given above is true and complete to the best of my knowledge and understand that pursuant to NMOCD rules and regulations all operators are required to report and/or file certain release notifications and perform corrective actions for releases which may endanger public health or the environment. The acceptance of a C-141 report by the NMOCD marked as "Final Report" does not relieve the operator of liability should their operations have failed to adequately investigate and remediate contamination that pose a threat to ground water, surface water, human health or the environment. In addition, NMOCD acceptance of a C-141 report does not relieve the operator of responsibility for compliance with any other federal, state, or local laws and/or regulations.

Signature: <i>Tony Savoie</i>	OIL CONSERVATION DIVISION		
Printed Name: Tony Savoie	Approved by Environmental Specialist:		
Title: Waste Management and Remediation Specialist	Approval Date:	Expiration Date:	
E-mail Address: tasavoie@basspet.com	Conditions of Approval:		Attached <input type="checkbox"/>
9/5/12	Phone: 432-556-8730		

* Attach Additional Sheets If Necessary

District I
1625 N. French Dr., Hobbs, NM 88240
District II
811 S. First St., Artesia, NM 88210
District III
1000 Rio Brazos Road, Aztec, NM 87410
District IV
1220 S. St. Francis Dr., Santa Fe, NM 87505

State of New Mexico
Energy Minerals and Natural Resources

Form C-141
Revised August 8, 2011

Oil Conservation Division
1220 South St. Francis Dr.
Santa Fe, NM 87505

Submit 1 Copy to appropriate District Office in
accordance with 19.15.29 NMAC.

Release Notification and Corrective Action

OPERATOR



Initial Report



Final Report

Name of Company: BOPCO, L.P.	Contact: Tony Savoie	
Address: 522 W. Mermod, Suite 704 Carlsbad, N.M. 88220	Telephone No. 575-887-7329	
Facility Name: PLU-183 Flow line spill location is 1700 ft. N.W. of the well location on Rawhide Road (2RP-1296)	Facility Type: Exploration and Production	
Surface Owner: Federal	Mineral Owner: Federal	API No. 30-015-33224

LOCATION OF RELEASE

Unit L	Section	Township	Range	Feet from the	North/South Line	Feet from the	East/West Line	County
O	6	24S	30E					

Latitude N 32.240774 Longitude W 103.918504

NATURE OF RELEASE

Type: Produced water and crude oil	Volume of Release: 3 bbls crude oil and 5 bbls produced water	Volume Recovered: 3 bbls total fluid
Source of Release: 2 7/8" flow line	Date and Hour of Occurrence: 9/2/12 time unknown	Date and Hour of Discovery: 9/2/12 at 8:00 a.m.
Was Immediate Notice Given? <input type="checkbox"/> Yes <input type="checkbox"/> No <input checked="" type="checkbox"/> Not Required	If YES, To Whom?	
By Whom?	Date and Hour	
Was a Watercourse Reached? <input type="checkbox"/> Yes <input checked="" type="checkbox"/> No	If YES, Volume Impacting the Watercourse.	

If a Watercourse was Impacted, Describe Fully.*

Describe Cause of Problem and Remedial Action Taken.*

The 2 7/8 inch flow line developed a leak due to external corrosion. A temporary leak clamp was installed on the pipe.

Describe Area Affected and Cleanup Action Taken.*

The spill occurred in the lease road, approximately 200 sq. ft. was affected by the release and response activities. The saturated soil was removed from the road way and placed on a nearby well pad. Clean caliche was used to cover the area for traffic use. The spill will be remediated in accordance to the NMOCD recommended guidelines for spills.

Confirmation soil samples collected from the floor and sidewalls of the PLU #183 excavation were analyzed by an NMOCD-approved laboratory, which determined concentrations of BTEX, TPH and Chloride were less than NMOCD Regulatory Standards in each of the submitted soil samples with the exception of soil sample WSW (In-Situ), which exhibited a chloride concentration of 1,220 ppm. Further excavation to the west was limited due to the presence of a widely used oil field access road. The final dimensions of the excavation were approximately 12' x 32' and 5' in depth. On February 27, 2014, approximately 60 cy of impacted soil was excavated and transported to an NMOCD-approved disposal facility. **Please reference the attached Basin Environmental Services Technologies Remediation Summary and Risk-Based Site Closure Request for details of remediation activities.**

I hereby certify that the information given above is true and complete to the best of my knowledge and understand that pursuant to NMOCD rules and regulations all operators are required to report and/or file certain release notifications and perform corrective actions for releases which may endanger public health or the environment. The acceptance of a C-141 report by the NMOCD marked as "Final Report" does not relieve the operator of liability should their operations have failed to adequately investigate and remediate contamination that pose a threat to ground water, surface water, human health or the environment. In addition, NMOCD acceptance of a C-141 report does not relieve the operator of responsibility for compliance with any other federal, state, or local laws and/or regulations.

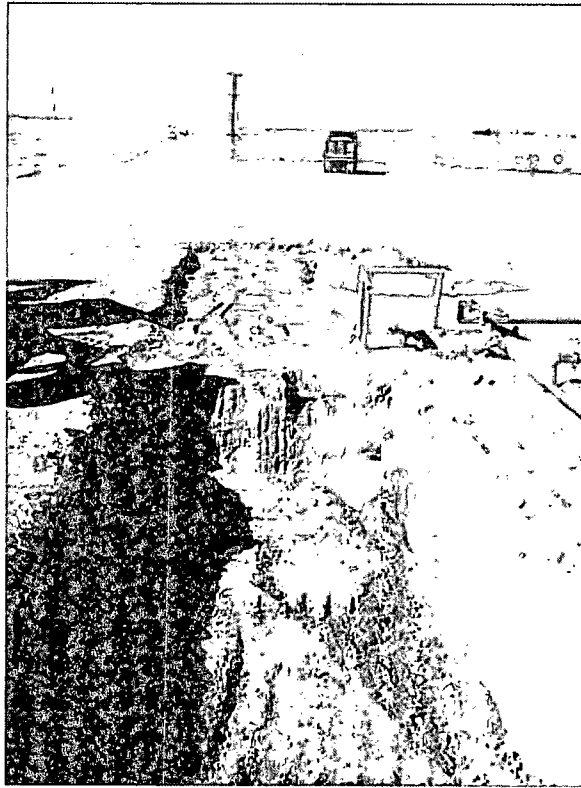
Signature: <u>Tony Savoie</u>		OIL CONSERVATION DIVISION	
Printed Name: Tony Savoie		Approved by Environmental Specialist:	
Title: Waste Management and Remediation Specialist		Approval Date:	Expiration Date:
E-mail Address: <u>tasavoie@basspet.com</u>		Conditions of Approval:	Attached <input type="checkbox"/>
Date: <u>4/1/14</u>	Phone: 432-556-8730		



Photograph of the initial release at the PLU #183 Flow Line Release Site.



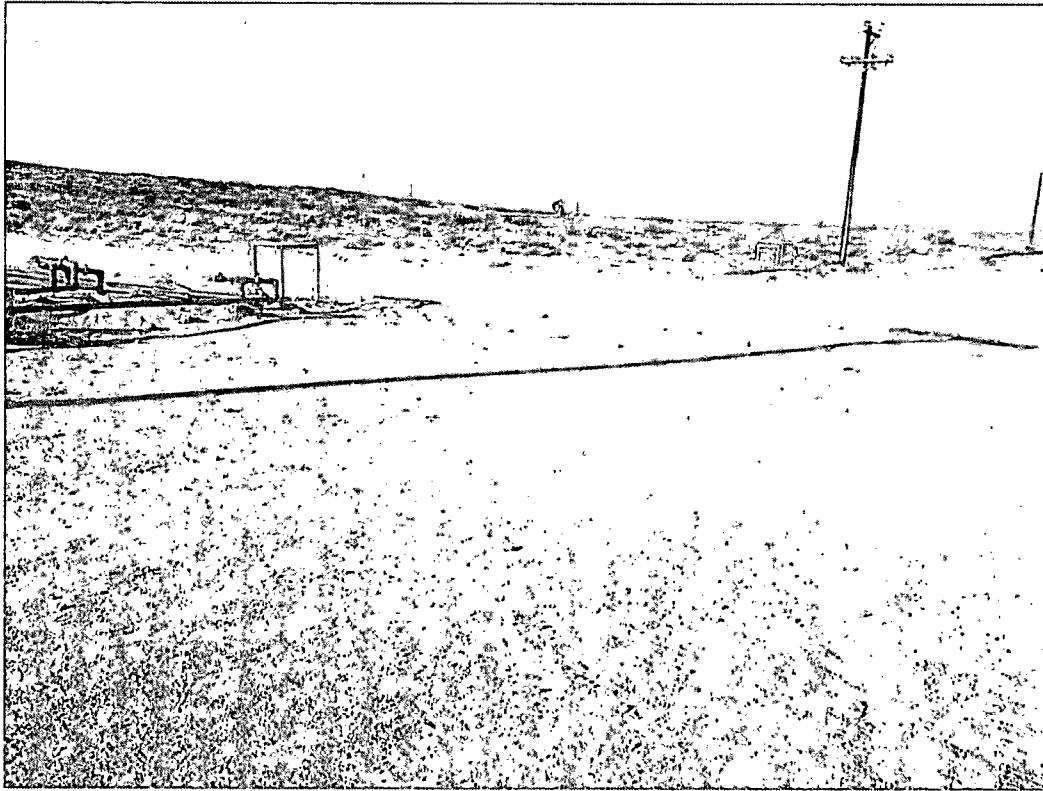
Photograph of excavation activities at the PLU #183 Flow Line Release Site.



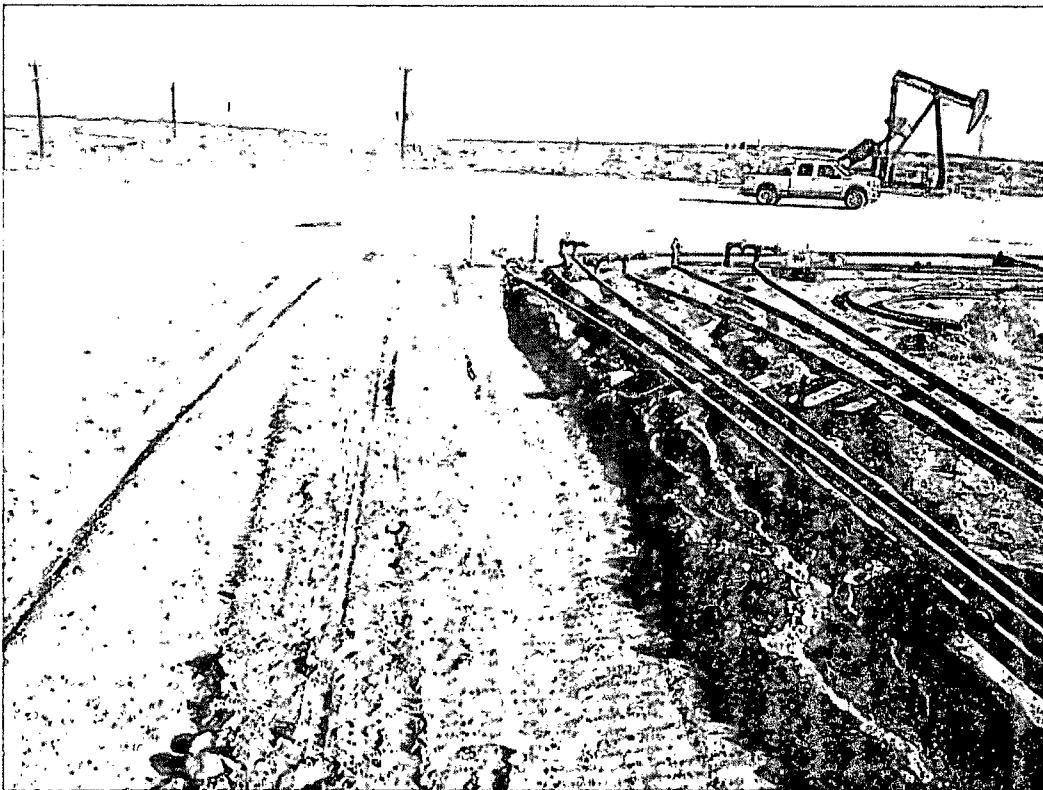
Photograph of excavation activities at the PLU #183 Flow Line Release Site.



Photograph of the advancement of the delineation trench at the PLU #183 Flow Line Release Site.



Photograph of PLU #183 Flow Line Release after remediation activities.



Photograph of PLU #183 Flow Line Release after remediation activities.



PHONE (575) 393-2326 ° 101 E. MARLAND ° HOBBS, NM 88240

March 03, 2014

JOEL LOWRY

Basin Environmental Service

P.O. Box 301

Lovington, NM 88260

RE: PLU #183 FLOWLINE

Enclosed are the results of analyses for samples received by the laboratory on 02/21/14 9:55.

Cardinal Laboratories is accredited through Texas NELAP under certificate number T104704398-13-5. Accreditation applies to drinking water, non-potable water and solid and chemical materials. All accredited analytes are denoted by an asterisk (*). For a complete list of accredited analytes and matrices visit the TCEQ website at www.tceq.texas.gov/field/qa/lab_accred_certif.html.

Cardinal Laboratories is accredited through the State of Colorado Department of Public Health and Environment for:

Method EPA 552.2	Haloacetic Acids (HAA-5)
Method EPA 524.2	Total Trihalomethanes (TTHM)
Method EPA 524.4	Regulated VOCs (V1, V2, V3)

Accreditation applies to public drinking water matrices.

This report meets NELAP requirements and is made up of a cover page, analytical results, and a copy of the original chain-of-custody. If you have any questions concerning this report, please feel free to contact me.

Sincerely,

Celey D. Keene

Lab Director/Quality Manager

Analytical Results For:

 Basin Environmental Service
 JOEL LOWRY
 P.O. Box 301
 Lovington NM, 88260
 Fax To: (575) 396-1429

 Received: 02/21/2014
 Reported: 03/03/2014
 Project Name: PLU #183 FLOWLINE
 Project Number: NONE GIVEN
 Project Location: EDDY COUNTY, NM

 Sampling Date: 02/20/2014
 Sampling Type: Soil
 Sampling Condition: Cool & Intact
 Sample Received By: Kathy I'erez

Sample ID: SP #1 @ 2' (H400531-01)

Chloride, SM4500Cl-B		mg/kg		Analyzed By: AP					
Analyte	Result	Reporting Limit	Analyzed	Method Blank	BS	% Recovery	True Value QC	RPD	Qualifier
Chloride	2480	16.0	02/27/2014	ND	416	104	400	3.92	

Sample ID: SP #2 @ 2' (H400531-02)

BTEX 8260B		mg/kg		Analyzed By: MS					
Analyte	Result	Reporting Limit	Analyzed	Method Blank	BS	% Recovery	True Value QC	RPD	Qualifier
Benzene*	<0.050	0.050	02/28/2014	ND	2.58	129	2.00	4.12	
Toluene*	<0.050	0.050	02/28/2014	ND	2.55	127	2.00	0.671	
Ethylbenzene*	<0.050	0.050	02/28/2014	ND	2.37	118	2.00	0.456	
Total Xylenes*	<0.150	0.150	02/28/2014	ND	7.21	120	6.00	1.13	
Total BTEX	<0.300	0.300	02/28/2014	ND					

Surrogate: Dibromofluoromethane 96.5 % 61.3-142

Surrogate: Toluene-d8 105 % 71.3-129

Surrogate: 4-Bromofluorobenzene 103 % 65.7-141

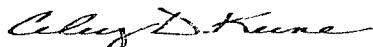
Chloride, SM4500Cl-B		mg/kg		Analyzed By: AP					
Analyte	Result	Reporting Limit	Analyzed	Method Blank	BS	% Recovery	True Value QC	RPD	Qualifier
Chloride	256	16.0	02/27/2014	ND	416	104	400	3.92	

TPH 8015M		mg/kg		Analyzed By: ms					
Analyte	Result	Reporting Limit	Analyzed	Method Blank	BS	% Recovery	True Value QC	RPD	Qualifier
GRO C6-C10	<10.0	10.0	02/26/2014	ND	207	104	200	0.745	
DRO >C10-C28	<10.0	10.0	02/26/2014	ND	204	102	200	0.160	
EXT DRO >C28-C35	<10.0	10.0	02/26/2014	ND					

Cardinal Laboratories

* = Accredited Analyte

PLEASE NOTE: Liability and Damages. Cardinal's liability and client's exclusive remedy for any claim arising, whether based in contract or tort, shall be limited to the amount paid by client for analyses. All claims, including those for negligence and any other cause whatsoever shall be deemed waived unless made in writing and received by Cardinal within thirty (30) days after completion of the applicable service. In no event shall Cardinal be liable for incidental or consequential damages, including, without limitation, business interruptions, loss of use, or loss of profits incurred by client, its subsidiaries, affiliates or successors arising out of or related to the performance of the services hereunder by Cardinal, regardless of whether such claim is based upon any of the above stated reasons or otherwise. Results relate only to the samples identified above. This report shall not be reproduced except in full with written approval of Cardinal Laboratories.



Celey D. Keene, Lab Director/Quality Manager

Analytical Results For:

 Basin Environmental Service
 JOEL LOWRY
 P.O. Box 301
 Lovington NM, 88260
 Fax To: (575) 396-1429

 Received: 02/21/2014
 Reported: 03/03/2014
 Project Name: PLU #183 FLOWLINE
 Project Number: NONE GIVEN
 Project Location: EDDY COUNTY, NM

 Sampling Date: 02/20/2014
 Sampling Type: Soil
 Sampling Condition: Cool & Intact
 Sample Received By: Kathy Perez

Sample ID: SP #2 @ 2' (H400531-02)

TPH 8015M	mg/kg	Analyzed By: ms							
Analyte	Result	Reporting Limit	Analyzed	Method Blank	BS	% Recovery	True Value QC	RPD	Qualifier
Surrogate: 1-Chlorooctane	91.4 %	65.2-140							
Surrogate: 1-Chlorooctadecane	98.5 %	63.6-154							

Sample ID: ESW #1 (H400531-03)

Chloride, SM4500Cl-B	mg/kg	Analyzed By: AP							
Analyte	Result	Reporting Limit	Analyzed	Method Blank	BS	% Recovery	True Value QC	RPD	Qualifier
Chloride	336	16.0	02/27/2014	ND	416	104	400	3.92	

Sample ID: SSW #1 (H400531-04)

Chloride, SM4500Cl-B	mg/kg	Analyzed By: AP							
Analyte	Result	Reporting Limit	Analyzed	Method Blank	BS	% Recovery	True Value QC	RPD	Qualifier
Chloride	1150	16.0	02/27/2014	ND	416	104	400	3.92	

Sample ID: NSW #1 (H400531-05)

Chloride, SM4500Cl-B	mg/kg	Analyzed By: AP							
Analyte	Result	Reporting Limit	Analyzed	Method Blank	BS	% Recovery	True Value QC	RPD	Qualifier
Chloride	1070	16.0	02/27/2014	ND	416	104	400	3.92	

Cardinal Laboratories

* = Accredited Analyte

PLEASE NOTE: Liability and Damages. Cardinal's liability and client's exclusive remedy for any claim arising, whether based in contract or tort, shall be limited to the amount paid by client for analyses. All claims, including those for negligence and any other cause whatsoever shall be deemed waived unless made in writing and received by Cardinal within thirty (30) days after completion of the applicable service. In no event shall Cardinal be liable for incidental or consequential damages, including, without limitation, business interruptions, loss of use, or loss of profits incurred by client, its subsidiaries, affiliates or successors arising out of or related to the performance of the services hereunder by Cardinal, regardless of whether such claim is based upon any of the above stated reasons or otherwise. Results relate only to the samples identified above. This report shall not be reproduced except in full with written approval of Cardinal Laboratories.



Celey D. Keene, Lab Director/Quality Manager

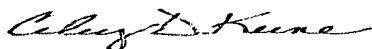
Notes and Definitions

ND	Analyte NOT DETECTED at or above the reporting limit
RPD	Relative Percent Difference
**	Samples not received at proper temperature of 6°C or below.
***	Insufficient time to reach temperature.
-	Chloride by SM4500Cl-B does not require samples be received at or below 6°C Samples reported on an as received basis (wet) unless otherwise noted on report

Cardinal Laboratories

* = Accredited Analyte

PLEASE NOTE: Liability and Damages. Cardinal's liability and client's exclusive remedy for any claim arising, whether based in contract or tort, shall be limited to the amount paid by client for analyses. All claims, including those for negligence and any other cause whatsoever shall be deemed waived unless made in writing and received by Cardinal within thirty (30) days after completion of the applicable service. In no event shall Cardinal be liable for incidental or consequential damages, including, without limitation, business interruptions, loss of use, or loss of profits incurred by client, its subsidiaries, affiliates or successors arising out of or related to the performance of the services hereunder by Cardinal, regardless of whether such claim is based upon any of the above stated reasons or otherwise. Results relate only to the samples identified above. This report shall not be reproduced except in full with written approval of Cardinal Laboratories.



Celey D. Keene, Lab Director/Quality Manager



Page 5 of 5

Relinquished By: <i>[Signature]</i>		Date: <i>2/21/14</i>	Received By: <i>[Signature]</i>	Phone Result: <input type="checkbox"/> Yes <input type="checkbox"/> No	Add'l Phone #: _____
		Time: <i>9:55</i>		Fax Result: <input type="checkbox"/> Yes <input type="checkbox"/> No	Add'l Fax #: _____
Relinquished By: _____		Date: _____	Received By: _____	REMARKS:	
		Time: _____			
Delivered By: (Circle One)			Sample Condition	CHECKED BY:	
Sampler - UPS - Bus - Other: _____			Cool Intact	(Initials)	
FORM-006 <i>0.6°C</i>			<input checked="" type="checkbox"/> Yes <input type="checkbox"/> No <input type="checkbox"/> Yes <input type="checkbox"/> No	<i>KP</i>	

#541

† Cardinal cannot accept verbal changes. Please fax written changes to 575-393-2476

March 07, 2014

JOEL LOWRY

Basin Environmental Service

P.O. Box 301

Lovington, NM 88260

RE: PLU #183 FLOWLINE

Enclosed are the results of analyses for samples received by the laboratory on 02/28/14 12:45.

Cardinal Laboratories is accredited through Texas NELAP under certificate number T104704398-13-5. Accreditation applies to drinking water, non-potable water and solid and chemical materials. All accredited analytes are denoted by an asterisk (*). For a complete list of accredited analytes and matrices visit the TCEQ website at www.tceq.texas.gov/field/qa/lab_accred_certif.html.

Cardinal Laboratories is accredited through the State of Colorado Department of Public Health and Environment for:

Method EPA 552.2	Haloacetic Acids (HAA-5)
Method EPA 524.2	Total Trihalomethanes (TTHM)
Method EPA 524.4	Regulated VOCs (V1, V2, V3)

Accreditation applies to public drinking water matrices.

This report meets NELAP requirements and is made up of a cover page, analytical results, and a copy of the original chain-of-custody. If you have any questions concerning this report, please feel free to contact me.

Sincerely,



Caley D. Keene

Lab Director/Quality Manager

Analytical Results For:

 Basin Environmental Service
 JOEL LOWRY
 P.O. Box 301
 Lovington NM, 88260
 Fax To: (575) 396-1429

 Received: 02/28/2014
 Reported: 03/07/2014
 Project Name: PLU #183 FLOWLINE
 Project Number: NONE GIVEN
 Project Location: EDDY COUNTY, NM

 Sampling Date: 02/26/2014
 Sampling Type: Soil
 Sampling Condition: Cool & Intact
 Sample Received By: Jodi Henson

Sample ID: TT-1 @ 5' (H400613-01)

BTEX 8260B			mg/kg		Analyzed By: MS				
Analyte	Result	Reporting Limit	Analyzed	Method Blank	BS	% Recovery	True Value QC	RPD	Qualifier
Benzene*	<0.050	0.050	03/06/2014	ND	2.25	112	2.00	1.45	
Toluene*	<0.050	0.050	03/06/2014	ND	2.37	118	2.00	4.45	
Ethylbenzene*	<0.050	0.050	03/06/2014	ND	2.31	116	2.00	4.27	
Total Xylenes*	<0.150	0.150	03/06/2014	ND	7.07	118	6.00	4.91	
Total BTEX	<0.300	0.300	03/06/2014	ND					

Surrogate: Dibromofluoromethane 98.8 % 61.3-142

Surrogate: Toluene-d8 103 % 71.3-129

Surrogate: 4-Bromofluorobenzene 104 % 65.7-141

Chloride, SM4500Cl-B			mg/kg		Analyzed By: AP				
Analyte	Result	Reporting Limit	Analyzed	Method Blank	BS	% Recovery	True Value QC	RPD	Qualifier
Chloride	4000	16.0	03/04/2014	ND	432	108	400	0.00	

TPH 8015M			mg/kg		Analyzed By: ms				
Analyte	Result	Reporting Limit	Analyzed	Method Blank	BS	% Recovery	True Value QC	RPD	Qualifier
GRO C6-C10	<10.0	10.0	03/04/2014	ND	198	98.9	200	8.32	
DRO >C10-C28	<10.0	10.0	03/04/2014	ND	192	96.1	200	9.24	
EXT DRO >C28-C35	12.0	10.0	03/04/2014	ND					

Surrogate: 1-Chlorooctane 81.5 % 65.2-140

Surrogate: 1-Chlorooctadecane 88.3 % 63.6-154

Cardinal Laboratories

*=Accredited Analyte

PLEASE NOTE: Liability and Damages. Cardinal's liability and client's exclusive remedy for any claim arising, whether based in contract or tort, shall be limited to the amount paid by client for analyses. All claims, including those for negligence and any other cause whatsoever shall be deemed waived unless made in writing and received by Cardinal within thirty (30) days after completion of the applicable service. In no event shall Cardinal be liable for incidental or consequential damages, including, without limitation, business interruptions, loss of use, or loss of profits incurred by client, its subsidiaries, affiliates or successors arising out of or related to the performance of the services hereunder by Cardinal, regardless of whether such claim is based upon any of the above stated reasons or otherwise. Results relate only to the samples identified above. This report shall not be reproduced except in full with written approval of Cardinal Laboratories.



Celey D. Keene, Lab Director/Quality Manager

Analytical Results For:

 Basin Environmental Service
 JOEL LOWRY
 P.O. Box 301
 Lovington NM, 88260
 Fax To: (575) 396-1429

 Received: 02/28/2014
 Reported: 03/07/2014
 Project Name: PLU #183 FLOWLINE
 Project Number: NONE GIVEN
 Project Location: EDDY COUNTY, NM

 Sampling Date: 02/26/2014
 Sampling Type: Soil
 Sampling Condition: Cool & Intact
 Sample Received By: Jodi Henson

Sample ID: TT-1 @ 9' (H400613-02)

Chloride, SM4500Cl-B		mg/kg	Analyzed By: AP						
Analyte	Result	Reporting Limit	Analyzed	Method Blank	BS	% Recovery	True Value QC	RPD	Qualifier
Chloride	7120	16.0	03/04/2014	ND	432	108	400	0.00	

Sample ID: TT-1 @ 15' (H400613-03)

Chloride, SM4500Cl-B		mg/kg	Analyzed By: AP						
Analyte	Result	Reporting Limit	Analyzed	Method Blank	BS	% Recovery	True Value QC	RPD	Qualifier
Chloride	1540	16.0	03/04/2014	ND	432	108	400	0.00	

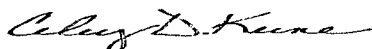
Sample ID: TT-1 @ 17' (H400613-04)

Chloride, SM4500Cl-B		mg/kg	Analyzed By: AP						
Analyte	Result	Reporting Limit	Analyzed	Method Blank	BS	% Recovery	True Value QC	RPD	Qualifier
Chloride	432	16.0	03/05/2014	ND	416	104	400	0.00	

Cardinal Laboratories

*=Accredited Analyte

PLEASE NOTE: Liability and Damages. Cardinal's liability and client's exclusive remedy for any claim arising, whether based in contract or tort, shall be limited to the amount paid by client for analyses. All claims, including those for negligence and any other cause whatsoever shall be deemed waived unless made in writing and received by Cardinal within thirty (30) days after completion of the applicable service. In no event shall Cardinal be liable for incidental or consequential damages, including, without limitation, business interruptions, loss of use, or loss of profits incurred by client, its subsidiaries, affiliates or successors arising out of or related to the performance of the services hereunder by Cardinal, regardless of whether such claim is based upon any of the above stated reasons or otherwise. Results relate only to the samples identified above. This report shall not be reproduced except in full with written approval of Cardinal Laboratories.



Celey D. Keene, Lab Director/Quality Manager

Analytical Results For:

Basin Environmental Service
JOEL LOWRY
P.O. Box 301
Lovington NM, 88260
Fax To: (575) 396-1429

Received: 02/28/2014
Reported: 03/07/2014
Project Name: PLU #183 FLOWLINE
Project Number: NONE GIVEN
Project Location: EDDY COUNTY, NM

Sampling Date: 02/27/2014
Sampling Type: Soil
Sampling Condition: Cool & Intact
Sample Received By: Jodi Henson

Sample ID: TT-1 @ 18' (H400613-05)

Chloride, SM4500Cl-B			mg/kg		Analyzed By: AP				
Analyte	Result	Reporting Limit	Analyzed	Method Blank	BS	% Recovery	True Value QC	RPD	Qualifier
Chloride	688	16.0	03/05/2014	ND	416	104	400	0.00	
TPH 8015M			mg/kg		Analyzed By: ms				
Analyte	Result	Reporting Limit	Analyzed	Method Blank	BS	% Recovery	True Value QC	RPD	Qualifier
GRO C6-C10	<10.0	10.0	03/04/2014	ND	198	98.9	200	8.32	
DRO >C10-C28	<10.0	10.0	03/04/2014	ND	192	96.1	200	9.24	
EXT DRO >C28-C35	<10.0	10.0	03/04/2014	ND					
Surrogate: 1-Chlorooctane	90.6 %	65.2-140							
Surrogate: 1-Chlorooctadecane	94.5 %	63.6-154							

Cardinal Laboratories

*=Accredited Analyte

PLEASE NOTE: Liability and Damages. Cardinal's liability and client's exclusive remedy for any claim arising, whether based in contract or tort, shall be limited to the amount paid by client for analyses. All claims, including those for negligence and any other cause whatsoever shall be deemed waived unless made in writing and received by Cardinal within thirty (30) days after completion of the applicable service. In no event shall Cardinal be liable for incidental or consequential damages, including, without limitation, business interruptions, loss of use, or loss of profits incurred by client, its subsidiaries, affiliates or successors arising out of or related to the performance of the services hereunder by Cardinal, regardless of whether such claim is based upon any of the above stated reasons or otherwise. Results relate only to the samples identified above. This report shall not be reproduced except in full with written approval of Cardinal Laboratories.



Celey D. Keene, Lab Director/Quality Manager

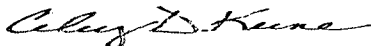
Notes and Definitions

ND	Analyte NOT DETECTED at or above the reporting limit
RPD	Relative Percent Difference
**	Samples not received at proper temperature of 6°C or below.
***	Insufficient time to reach temperature.
-	Chloride by SM4500Cl-B does not require samples be received at or below 6°C
	Samples reported on an as received basis (wet) unless otherwise noted on report

Cardinal Laboratories

*=Accredited Analyte

PLEASE NOTE: Liability and Damages. Cardinal's liability and client's exclusive remedy for any claim arising, whether based in contract or tort, shall be limited to the amount paid by client for analyses. All claims, including those for negligence and any other cause whatsoever shall be deemed waived unless made in writing and received by Cardinal within thirty (30) days after completion of the applicable service. In no event shall Cardinal be liable for incidental or consequential damages, including, without limitation, business interruptions, loss of use, or loss of profits incurred by client, its subsidiaries, affiliates or successors arising out of or related to the performance of the services hereunder by Cardinal, regardless of whether such claim is based upon any of the above stated reasons or otherwise. Results relate only to the samples identified above. This report shall not be reproduced except in full with written approval of Cardinal Laboratories.



Celey D. Keene, Lab Director/Quality Manager



101 East Marland, Hobbs, NM 88240.

(575) 393-2326 FAX (575) 393-2476

Page 6 of 6

PLEASE NOTE: Liability and Damages. Cardinal's liability and client's exclusive remedy for any claim arising whether based in contract or tort, shall be limited to the amount paid by the client for the analyses. All claims, including those for negligence and any other cause whatsoever shall be deemed waived unless made in writing and received by Cardinal within 30 days after completion of the applicable service. In no event shall Cardinal be liable for incidental or consequential damages, including without limitation, business interruptions, loss of use, or loss of profits incurred by client, its subsidiaries, affiliates or successors arising out of or related to the performance of services hereunder by Cardinal, regardless of whether such claim is based upon any of the above stated reasons or otherwise.

Relinquished By: <i>Joel Jolley</i>		Date: <i>8/28/14</i>	Received By: <i>Jodi Benson</i>	Phone Result: <input type="checkbox"/> Yes <input type="checkbox"/> No	Add'l Phone #:
Relinquished By:		Time: <i>12:45</i>	Received By:	Fax Result: <input type="checkbox"/> Yes <input type="checkbox"/> No	Add'l Fax #:
Delivered By: (Circle One)		Time:		REMARKS:	
Sampler - UPS - Bus - Other: FORM-006		Sample Condition Cool Intact <i>-4.2°</i> <input checked="" type="checkbox"/> Yes <input checked="" type="checkbox"/> Yes <input type="checkbox"/> No <input type="checkbox"/> No		CHECKED BY: (Initials) <i>JA</i>	
Please email results to pm@basinenv.com , TASavole@BassPet.com & SJWalters@BassPet.com					

Revision 1.0

† Cardinal cannot accept verbal changes. Please fax written changes to 575-393-2476.

#54



PHONE (575) 393-2326 ° 101 E. MARLAND ° HOBBS, NM 88240

March 07, 2014

JOEL LOWRY

Basin Environmental Service

P.O. Box 301

Lovington, NM 88260

RE: PLU #183 FLOWLINE

Enclosed are the results of analyses for samples received by the laboratory on 03/05/14 9:15.

Cardinal Laboratories is accredited through Texas NELAP under certificate number T104704398-13-5. Accreditation applies to drinking water, non-potable water and solid and chemical materials. All accredited analytes are denoted by an asterisk (*). For a complete list of accredited analytes and matrices visit the TCEQ website at www.tceq.texas.gov/field/qa/lab_accred_certif.html.

Cardinal Laboratories is accredited through the State of Colorado Department of Public Health and Environment for:

Method EPA 552.2	Haloacetic Acids (HAA-5)
Method EPA 524.2	Total Trihalomethanes (TTHM)
Method EPA 524.4	Regulated VOCs (V1, V2, V3)

Accreditation applies to public drinking water matrices.

This report meets NELAP requirements and is made up of a cover page, analytical results, and a copy of the original chain-of-custody. If you have any questions concerning this report, please feel free to contact me.

Sincerely,

Celey D. Keene

Lab Director/Quality Manager

Analytical Results For:

Basin Environmental Service
JOEL LOWRY
P.O. Box 301
Lovington NM, 88260
Fax To: (575) 396-1429

Received: 03/05/2014
Reported: 03/07/2014
Project Name: PLU #183 FLOWLINE
Project Number: NONE GIVEN
Project Location: EDDY COUNTY, NM

Sampling Date: 02/26/2014
Sampling Type: Soil
Sampling Condition: Cool & Intact
Sample Received By: Jodi Henson

Sample ID: WSW (IN-SITU) (H400667-01)

Chloride, SM4500Cl-B		mg/kg		Analyzed By: AP					
Analyte	Result	Reporting Limit	Analyzed	Method Blank	BS	% Recovery	True Value QC	RPD	Qualifier
Chloride	1220	16.0	03/07/2014	ND	432	108	400	0.00	

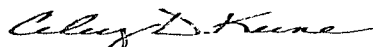
Sample ID: SSW #1B (H400667-02)

Chloride, SM4500Cl-B		mg/kg		Analyzed By: AP					
Analyte	Result	Reporting Limit	Analyzed	Method Blank	BS	% Recovery	True Value QC	RPD	Qualifier
Chloride	624	16.0	03/07/2014	ND	432	108	400	0.00	

Cardinal Laboratories

*=Accredited Analyte

PLEASE NOTE: Liability and Damages. Cardinal's liability and client's exclusive remedy for any claim arising, whether based in contract or tort, shall be limited to the amount paid by client for analyses. All claims, including those for negligence and any other cause whatsoever shall be deemed waived unless made in writing and received by Cardinal within thirty (30) days after completion of the applicable service. In no event shall Cardinal be liable for incidental or consequential damages, including, without limitation, business interruptions, loss of use, or loss of profits incurred by client, its subsidiaries, affiliates or successors arising out of or related to the performance of the services hereunder by Cardinal, regardless of whether such claim is based upon any of the above stated reasons or otherwise. Results relate only to the samples identified above. This report shall not be reproduced except in full with written approval of Cardinal Laboratories.



Celey D. Keene, Lab Director/Quality Manager

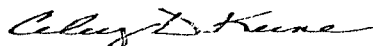
Notes and Definitions

ND	Analyte NOT DETECTED at or above the reporting limit
RPD	Relative Percent Difference
**	Samples not received at proper temperature of 6°C or below.
***	Insufficient time to reach temperature.
-	Chloride by SM4500Cl-B does not require samples be received at or below 6°C Samples reported on an as received basis (wet) unless otherwise noted on report

Cardinal Laboratories

*=Accredited Analyte

PLEASE NOTE: Liability and Damages. Cardinal's liability and client's exclusive remedy for any claim arising, whether based in contract or tort, shall be limited to the amount paid by client for analyses. All claims, including those for negligence and any other cause whatsoever shall be deemed waived unless made in writing and received by Cardinal within thirty (30) days after completion of the applicable service. In no event shall Cardinal be liable for incidental or consequential damages, including, without limitation, business interruptions, loss of use, or loss of profits incurred by client, its subsidiaries, affiliates or successors arising out of or related to the performance of the services hereunder by Cardinal, regardless of whether such claim is based upon any of the above stated reasons or otherwise. Results relate only to the samples identified above. This report shall not be reproduced except in full with written approval of Cardinal Laboratories.



Celey D. Keene, Lab Director/Quality Manager

• CARDINAL LABORATORIES

101 East Marland, Hobbs, NM 88240

(575) 393-2326 FAX (575) 393-2476

CHAIN-OF-CUSTODY AND ANALYSIS REQUEST

Page 4 of 4

[illegible]

PLEASE NOTE: Liability and Damages. Cardinal's liability and client's exclusive remedy for any claim arising whether based in contract or tort, shall be limited to the amount paid by the client for the analyses. All claims including those for negligence and any other cause whatsoever shall be deemed waived unless made in writing and received by Cardinal within 30 days after completion of the applicable service. In no event shall Cardinal be liable for incidental or consequential damages, including without limitation, business interruptions, loss of use, or loss of profits incurred by client, its subsidiaries, affiliates or successors arising out of or related to the performance of services hereunder by Cardinal, regardless of whether such claim is based upon any of the above stated reasons or otherwise.

Relinquished By: <i>Paul Jones</i>		Date: <i>3/5/14</i>	Received By: <i>Mumil P...</i>	Phone Result: <input type="checkbox"/> Yes <input type="checkbox"/> No	Add'l Phone #:
		Time: <i>8:00</i>		Fax Result: <input type="checkbox"/> Yes <input type="checkbox"/> No	Add'l Fax #:
Relinquished By: <i>Megan Danner</i>		Date: <i>3/5/14</i>	Received By: <i>Jodi Henson</i>	REMARKS:	
Delivered By: (Circle One)		Time: <i>9:15</i>		Please email results to pm@basinenv.com, TASaviole@BassPet.com & SJWalters@BassPet.com	
Sample: <i>ORP-06 Bus - Other:</i>		<i>0.40</i>	Sample Condition Cool Intact <input type="checkbox"/> Yes <input checked="" type="checkbox"/> No	CHECKED BY: (Initials) <i>[Signature]</i>	
Revision: <i>1.0</i>					

† Cardinal cannot accept verbal changes. Please fax written changes to 575-393-2476