

District I
1625 N. French Dr., Hobbs, NM 88240
District II
1301 W. Grand Avenue, Artesia, NM 88210
District III
1000 Rio Brazos Road, Aztec, NM 87410
District IV
1220 S. St. Francis Dr., Santa Fe, NM 87505

State of New Mexico
Energy Minerals and Natural Resources

Oil Conservation Division
1220 South St. Francis Dr.
Santa Fe, NM 87505

Form C-141
Revised October 10, 2003

Submit 2 Copies to appropriate
District Office in accordance
with Rule 116 on back
side of form

Release Notification and Corrective Action

OPERATOR

☐ Initial Report ☒ Final Report

Name of Company: Southern Union Gas Services	Contact: Rose Slade
Address: 801 South Loop 464	Telephone No.: 817-302-9716
Facility Name: Monahans Field Office	Facility Type: Line 2C - 12"

Surface Owner: George Willis	Mineral Owner	API No - 30-025-28822
------------------------------	---------------	-----------------------

LOCATION OF RELEASE

Unit Letter A	Section 27	Township 25S	Range 37E	Feet from the	North/South Line	Feet from the	East/West Line	County Lea
------------------	---------------	-----------------	--------------	---------------	------------------	---------------	----------------	---------------

Latitude_N32 degrees 06.397' Longitude: 103 degrees 08.531'

NATURE OF RELEASE

Type of Release: Crude oil, Produced water, and Natural Gas	Volume of Release: 20 barrels	Volume Recovered: 17 barrels
Source of Release: 12 " Steel Pipeline (Low pressure)	Date and Hour of Occurrence: 2/15/11 -1145 hrs	Date and Hour of Discovery: 2/15/2011 at approximately 1326 hrs
Was Immediate Notice Given? <input checked="" type="checkbox"/> Yes <input type="checkbox"/> No <input type="checkbox"/> Not Required	If YES, To Whom? Geoff Leking -NMOCD District office	
By Whom? Rose Slade	Date and Hour: 2/16/11 - 1310 hrs	
Was a Watercourse Reached? <input type="checkbox"/> Yes <input checked="" type="checkbox"/> No	If YES, Volume Impacting the Watercourse.	

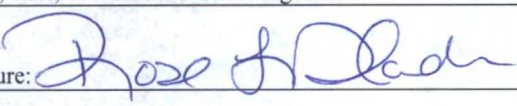
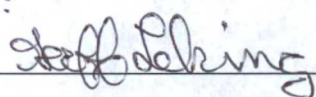
If a Watercourse was Impacted, Describe Fully.*

Describe Cause of Problem and Remedial Action Taken.*

Failure of a segment of the twelve (12) inch low-pressure steel pipeline resulted in the release of approximately twenty (20) barrels of a mixture of crude oil and produced water. The cause of the failure was attributed to internal corrosion. An unknown volume of natural gas was released to the atmosphere. Following discovery of the release, a temporary pipeline clamp was employed to mitigate the release. A vacuum truck was able to recover approximately seventeen (17) barrels of the released mixture.

Describe Area Affected and Cleanup Action Taken.* Soil samples collected from the Line 2-C 12" excavation were analyzed by an NMOCD approved laboratory and remediation activities met the objectives set forth in the NMOCD approved work plan. Excavation samples were advanced until concentrations of benzene, BTEX, TPH, and chlorides were less than NMOCD regulatory standards. A twelve-inch (12") clay liner was installed on the floor of the excavation at approximately two and one-half (2.5') bgs to inhibit vertical migration of any contaminants left in place. Based on laboratory analytical results from confirmation soil samples, Basin Environmental recommends Southern Union provide the NMOCD Hobbs district office a copy of this Remediation Summary & Risk-Based Site Closure Request and request the NMOCD grant site closure to the Line 2- 12" site.

I hereby certify that the information given above is true and complete to the best of my knowledge and understand that pursuant to NMOCD rules and regulations all operators are required to report and/or file certain release notifications and perform corrective actions for releases which may endanger public health or the environment. The acceptance of a C-141 report by the NMOCD marked as "Final Report" does not relieve the operator of liability should their operations have failed to adequately investigate and remediate contamination that pose a threat to ground water, surface water, human health or the environment. In addition, NMOCD acceptance of a C-141 report does not relieve the operator of responsibility for compliance with any other federal, state, or local laws and/or regulations.

Signature: 	OIL CONSERVATION DIVISION	
Printed Name: Rose L. Slade	ENV SPECIALIST: Approved by District Supervisor 	
Title: EHS Compliance Specialist	Approval Date: 8/7/12	Expiration Date: -
E-mail Address: rose.slade@sug.com	Conditions of Approval: -	Attached <input type="checkbox"/>
Date: 8/2/12 Phone: 817-302-9716	RP-2-11-2684	

* Attach Additional Sheets If Necessary

Basin Environmental Service Technologies, LLC

3100 Plains Highway
P. O. Box 301
Lovington, New Mexico 88260

jwlowry@basinenv.com

Office: (575) 396-2378

Fax: (575) 396-1429



REMEDIATION SUMMARY & RISK-BASED SITE CLOSURE REQUEST

**SOUTHERN UNION GAS SERVICES
LINE 2-C 12"**

Lea County, New Mexico

Unit Letter "A" (NE/NE), Section 27, Township 25 South, Range 37 East

Latitude 32° 06.397' North, Longitude 103° 08.531' West

NMOCD Reference # 1RP _____

Prepared For:

Southern Union Gas Services
801 S. Loop 464
Monahans, TX 79756

Prepared By:

Basin Environmental Service Technologies, LLC
3100 Plains Highway
Lovington, New Mexico 88260

July 2012

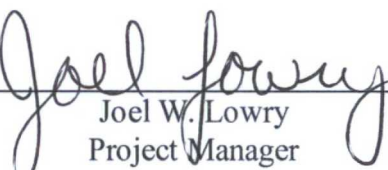

Joel W. Lowry
Project Manager

TABLE OF CONTENTS

1.0 INTRODUCTION.....	1
2.0 NMOCD SITE CLASSIFICATION.....	1
3.0 SUMMARY OF SOIL REMEDIATION ACTIVITIES.....	2
4.0 QA/QC PROCEDURES.....	3
4.1 Soil Sampling.....	3
4.2 Decontamination of Equipment.....	3
4.3 Laboratory Protocol.....	3
5.0 SITE CLOSURE REQUEST.....	4
6.0 LIMITATIONS.....	5
7.0 DISTRIBUTION.....	6

FIGURES

Figure 1 – Site Location Map

Figure 2 – Site & Sample Location Map

TABLES

Table 1 – Concentrations of Benzene, BTEX, TPH & Chloride in Soil

APPENDICES

Appendix A – Photographs

Appendix B – Laboratory Analytical Reports

Appendix C – Disposal Manifest

Appendix D – Release Notification and Corrective Action (Form C-141)

1.0 INTRODUCTION & BACKGROUND INFORMATION

Basin Environmental Service Technologies, LLC (Basin), on behalf of Southern Union Gas Services (Southern Union), has prepared this *Remediation Summary & Risk-Based Site Closure Request* for the release site known as Line 2-C 12". The legal description of the release site is Unit Letter "A" (NE/NE), Section 27, Township 25 South, Range 37 East, in Lea County, New Mexico. The geographic coordinates of the release site are 32° 06.397' North latitude and 103° 08.531' West longitude. The property affected by the release is owned by Mr. George Willis. Please reference Figure 1 for a "Site Location Map".

On February 15, 2011, Southern Union discovered a release had occurred on the Line 2-C twelve inch (12") pipeline. The "Release Notification and Corrective Action" (Form C-141) indicated failure of a section of twelve inch (12") low-pressure steel pipeline resulted in the release of approximately twenty barrels (20 bbls) of a mixture of crude oil, produced water and natural gas. During initial response activities a vacuum truck was utilized to recover approximately seventeen barrels (17 bbls) of free standing fluids. The release was reported to the New Mexico Oil Conservation Division (NMOCD) Hobbs District Office on February 15, 2011. The release affected an area measuring approximately two hundred square feet (200 ft²). General photographs of the release site are provided as Appendix A. The Form C-141 is provided as Appendix D.

2.0 NMOCD SITE CLASSIFICATION

A search of the New Mexico Water Rights Reporting System (NMWRRS) database maintained by the New Mexico Office of the State Engineer (NMOSE) indicated information was unavailable for Section 27, Township 25 South, Range 37 East. An inferred depth to groundwater gradient reference map utilized by the NMOCD indicated groundwater should be encountered at between approximately fifty-five feet (55') and sixty-five (65') bgs. Based on the NMOCD ranking system, ten (10) points will be assigned to the site as a result of this criterion.

A search of the NMWRRS database indicated there are no water wells within 1,000 feet of the release. Based on the NMOCD ranking system, zero (0) points will be assigned to the site as a result of this criterion.

There are no surface water bodies within 1,000 feet of the release. Based on the NMOCD ranking system, zero (0) points will be assigned to the site as a result of this criterion.

NMOCD guidelines indicate the Line 2-C 12" release site has an initial ranking score of ten (10) points. The soil remediation levels for a site with a ranking score of ten (10) points are as follows:

- Benzene – 10 mg/Kg (ppm)
- BTEX – 50 mg/Kg (ppm)
- TPH – 1,000 mg/Kg (ppm)

The New Mexico Administrative Code (NMAC) does not currently specify a remediation level for chloride concentrations in soil. Chloride remediation levels are set by the NMOCD on a site-specific basis.

3.0 SUMMARY OF SOIL REMEDIATION ACTIVITIES

On October 31, 2011, five (5) initial soil samples (Surface, Trench @ 3', Trench @ 9'6", Trench @ 12' and Trench @ 14'6") were collected from a delineation trench advanced at the release point, for laboratory analysis. Soil samples were submitted to Xenco Laboratories, Inc., in Odessa, Texas, for analysis of benzene, ethylbenzene, toluene, and xylene (BTEX), total petroleum hydrocarbons (TPH), and chloride concentrations using EPA Methods SW 846-8021b, SW 846-8015M, and 300.1, respectively. Table 1 summarizes the "Concentrations of Benzene, BTEX, TPH & Chloride in Soil". Soil sample locations are depicted in Figure 2, "Site & Sample Location Map". Laboratory analytical reports are provided as Appendix B.

Laboratory analytical results indicated the concentration of benzene was less than the appropriate laboratory method detection limit (MDL) in each of the submitted soil samples. Analytical results indicated the BTEX concentration was less than the appropriate laboratory MDL in each of the submitted soil samples. TPH concentrations ranged from 129 mg/Kg in soil sample Trench @ 9'6" to 2,880 mg/Kg in soil sample Surface. Chloride concentrations ranged from 641 mg/Kg in soil sample Trench at 14'6" to 7,920 mg/Kg in soil sample Surface. Based on laboratory analytical results from soil samples collected from the on-site delineation trench, it was determined a soil boring would be necessary to adequately delineate the vertical impact at the release site.

On November 15, 2011, one soil boring (SB-1) was advanced at the release site. During the advancement of the soil boring, six (6) soil samples (SB-1 @ 5', SB-1 @ 15', SB-1 @ 25', SB-1 @ 35', SB-1 @ 40', and SB-1 @ 45') were collected and submitted to the laboratory for analysis of TPH and chloride concentrations. Laboratory analytical results indicated TPH concentrations ranged from less than the appropriate laboratory MDL of 18.7 mg/Kg for soil sample SB-1 @ 45' to 3,440 mg/Kg for soil sample SB-1 @ 5'. Analytical results indicated chloride concentrations ranged from 186 mg/Kg in soil sample SB-1 @ 40' to 1,830 mg/Kg for soil sample SB-1 @ 5'.

On April 24, 2012, Basin began excavation activities at the release site. Excavation sidewalls were advanced until chloride field tests and photo-ionization detector (PID) readings indicated concentrations of TPH and chloride were less than NMOCD regulatory remediation action levels established for the site.

On April 25, 2012, four (4) confirmation soil samples (North Wall, South Wall, East Wall and West Wall) were collected from the sidewalls of the excavation and submitted to the laboratory for analysis of BTEX, TPH and chloride concentrations. Laboratory analytical results indicated benzene and BTEX concentrations were less than the appropriate laboratory MDL for each of the submitted soil samples. Analytical results indicated TPH concentrations were less than the appropriate laboratory MDL for each of the submitted soil samples. Chloride concentrations ranged from 11.3 mg/Kg for soil sample North Wall to 248 mg/Kg for soil sample West Wall. Benzene, BTEX, TPH and chloride concentrations were below NMOCD regulatory remediation action levels for each of the submitted soil samples.

On April 26, 2012, Southern Union submitted a "Remediation Summary and Risk-Based Closure Proposal" to the NMOCD Hobbs District Office. The Proposal detailed activities designed to advance the release site toward and NMOCD approved closure. Following discussion between Southern Union and an NMOCD representative, the NMOCD representative approved the proposed activities. Please reference the "Remediation Summary and Risk-Based Closure Proposal" prepared by Basin and dated April 2012.

On July 2, 2012, a one-foot (1') impermeable red clay liner was installed on the floor of the excavation. This engineering control was designed to inhibit vertical migration of contaminants from below the red clay liner to the surface, protecting the vegetative zone, and shed moisture to the edge of the liner beyond the maximum horizontal extent of underlying impacted soil.

On July 3, 2012, on receiving verbal approval from an NMOCD representative, the excavation was backfilled with locally purchased, non-impacted material. Excavation backfill was compacted in twelve-inch (12") lifts and contoured to fit the surrounding topography. Prior to backfilling, the final dimensions of the excavation were approximately sixty feet (60') in length, fifty feet (50') in width, and approximately two and one-half feet (2.5') in depth. Approximately two hundred fifty cubic yards (250 yd³) of impacted material was transported to Sundance Services, Inc (NMOCD Permit # 01-003) for disposal. Copies of disposal manifest are provided as Appendix C.

4.0 QA/QC PROCEDURES

4.1 Soil Sampling

Soil samples were delivered to Xenco Laboratories, Inc., of Odessa, Texas, for BTEX, TPH, and/or chloride analyses using the methods described below:

- BTEX concentrations in accordance with EPA Method SW-846 8021b
- TPH concentrations in accordance with modified EPA Method SW-846 8015M
- Chloride concentrations in accordance with EPA Method 300.1

4.2 Decontamination of Equipment

Cleaning of the sampling equipment was the responsibility of the environmental technician. Prior to use, and between each sample, the sampling equipment was cleaned with Liqui-Nox® detergent and rinsed with distilled water.

4.3 Laboratory Protocol

The laboratory was responsible for proper QA/QC procedures after signing the chain-of-custody form(s). These procedures were either transmitted with the laboratory reports or are on file at the laboratory.

5.0 SITE CLOSURE REQUEST

Soil samples collected from the Line 2-C 12" excavation were analyzed by an NMOCD-approved laboratory and remediation activities met the objectives set forth in the NMOCD-approved work plan. Excavation sidewalls were advanced until concentrations of benzene, BTEX, TPH and chloride were less than NMOCD regulatory standards. A twelve-inch (12") clay liner was installed on the floor of the excavation at approximately two and one-half feet (2.5') bgs to inhibit vertical migration of any contaminants left in place. Based on laboratory analytical results from confirmation soil samples, Basin Environmental recommends Southern Union provide the NMOCD Hobbs District Office a copy of this *Remediation Summary & Risk-Based Site Closure Request* and request the NMOCD grant site closure to the Line 2-C 12" site.

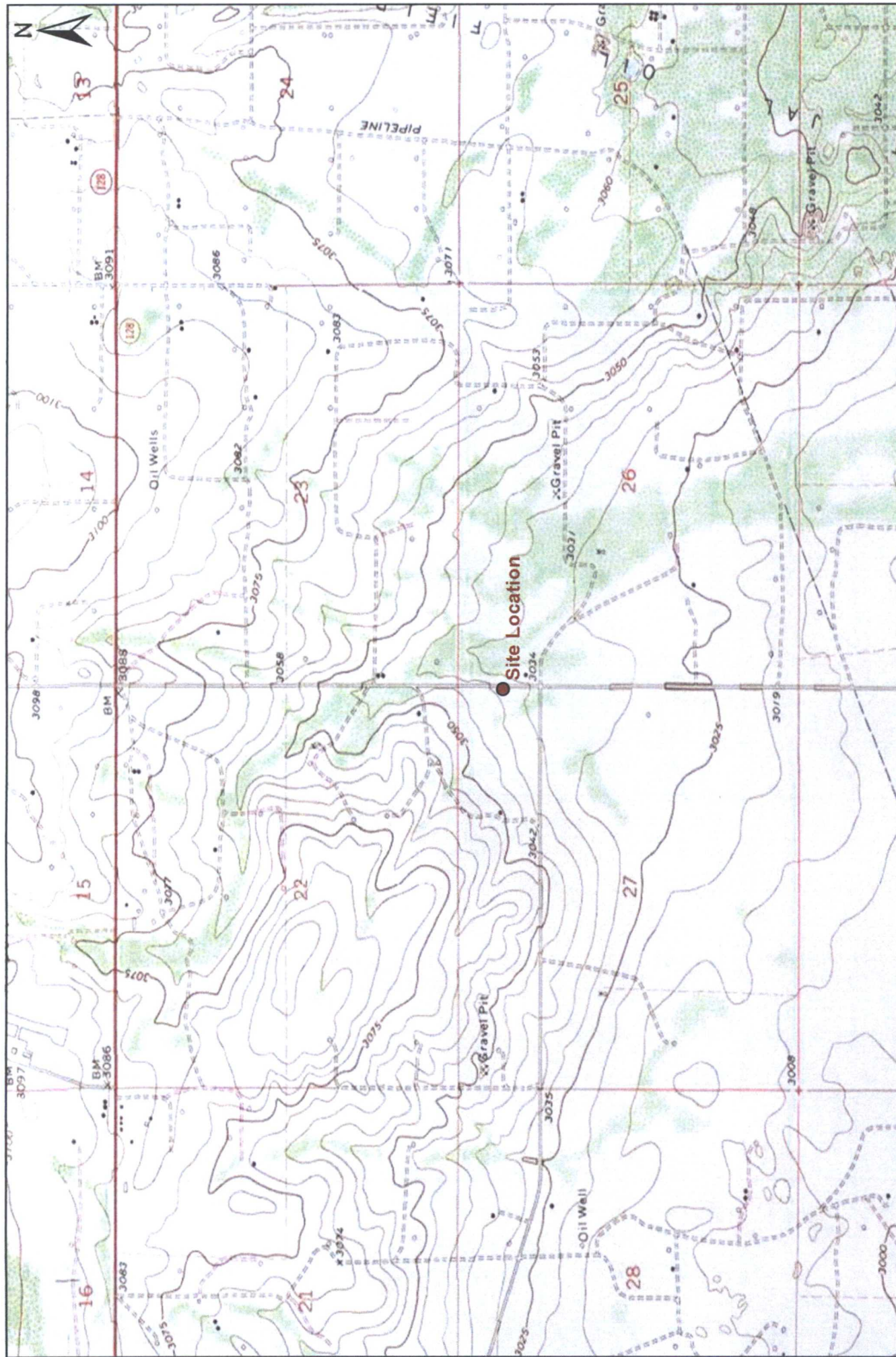
6.0 LIMITATIONS

Basin Environmental Service Technologies, LLC, has prepared this *Remediation Summary & Risk-Based Site Closure Request* to the best of its ability. No other warranty, expressed or implied, is made or intended. Basin has examined and relied upon documents referenced in the report and on oral statements made by certain individuals. Basin has not conducted an independent examination of the facts contained in referenced materials and statements. Basin has presumed the genuineness of these documents and statements and that the information provided therein is true and accurate. Basin has prepared this report in a professional manner, using the degree of skill and care exercised by similar environmental consultants. Basin notes that the facts and conditions referenced in this report may change over time, and the conclusions and recommendations set forth herein are applicable only to the facts and conditions as described at the time of this report.

This report has been prepared for the benefit of Southern Union Gas Services. The information contained in this report, including all exhibits and attachments, may not be used by any other party without the express consent of Basin Environmental Service Technologies, LLC, and/or Southern Union Gas Services.

7.0 DISTRIBUTION:

- Copy 1: Geoffrey Leking
New Mexico Energy, Minerals and Natural Resources Department
Oil Conservation Division (District 1)
1625 French Drive
Hobbs, NM 88240
GeoffreyR.Leking@state.nm.us
- Copy 2: Rose Slade & Curt Stanley
Southern Union Gas Services
801 S. Loop 464
Monahans, Texas 79756
rose.slade@sug.com
curt.stanley@sug.com
- Copy 3: Basin Environmental Service Technologies, LLC
P.O. Box 301
Lovington, New Mexico 88260



Basin Environmental Service Technologies, LLC
3100 Plains Hwy.
Lovington, NM 88260



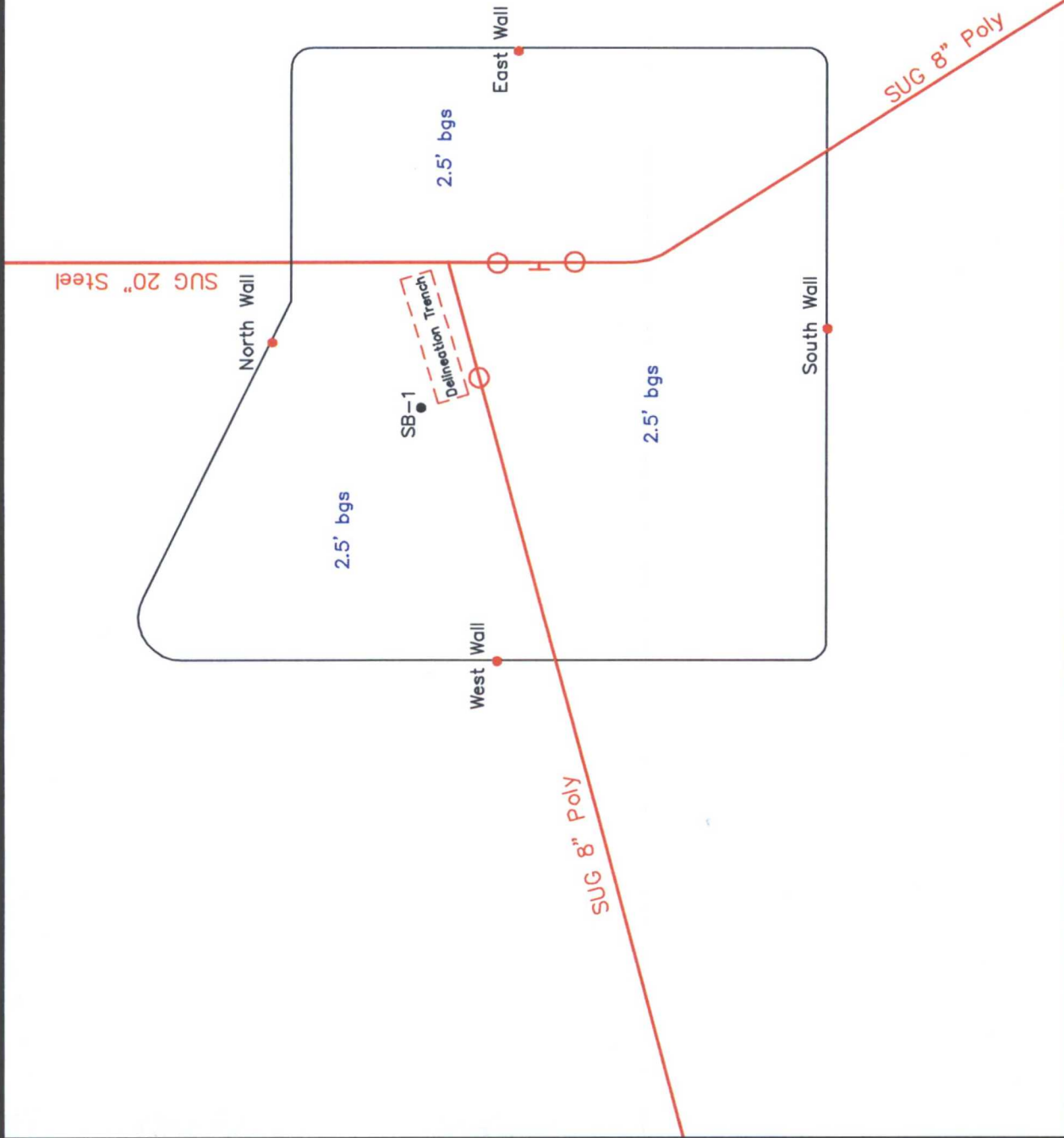
Figure 1
Site Location Map
Southern Union Gas Services
Line 2-C 12"
Lea County, New Mexico



Drawn By: BJA
April 6, 2012
Checked By: BRB
Scale: 1" = 2000'



Willis Road



- Legend**
- Sample Location
 - Excavation Extent
 - [] Delineation Trench
 - Road
 - Pipeline
 - Fence
 - Soil Boring

Figure 2
Site & Sample Location Map
Southern Union Gas Services
NMOCD Ref #1RP
Lea County, New Mexico

Basin Environmental Services

Prep By: JWL
July 5, 2012
Checked By: BJA
Scale 1"=10'

TABLE 1

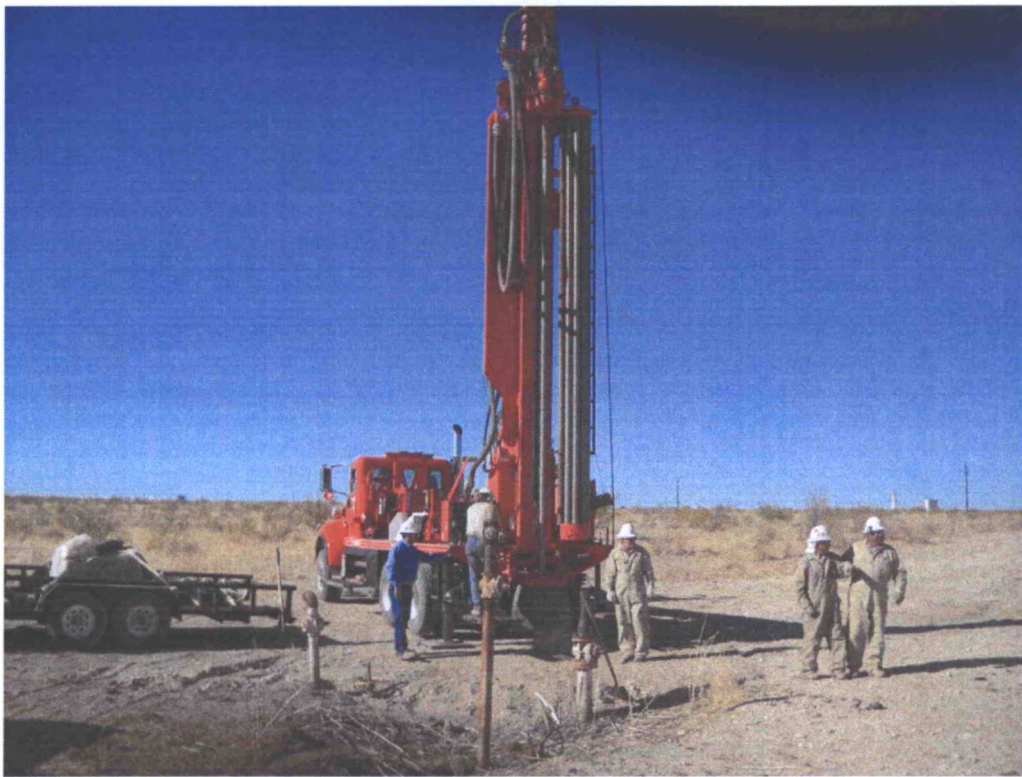
CONCENTRATIONS OF BENZENE, BTX, TPH & CHLORIDE IN SOIL
SOUTHERN UNION GAS SERVICES
LINE 2C 12-INCH
LEA COUNTY, NEW MEXICO

SAMPLE LOCATION	SAMPLE DEPTH (BGS)	SAMPLE DATE	SOIL STATUS	METHOD: EPA SW 846-8021B, 5030						METHOD: 8015M				TOTAL TPH C ₆ -C ₃₅ (mg/Kg)	E 300 CHLORIDE (mg/Kg)
				BENZENE (mg/Kg)	TOLUENE (mg/Kg)	ETHYL-BENZENE (mg/Kg)	M.P. - XYLENES (mg/Kg)	O-XYLENE (mg/Kg)	TOTAL BTEX (mg/Kg)	GRO C ₆ -C ₁₂ (mg/Kg)	DRO C ₁₂ -C ₂₈ (mg/Kg)	ORO C ₂₈ -C ₃₅ (mg/Kg)			
Surface	Surface	10/31/2011	Excavated	<0.0010	<0.0021	<0.0010	<0.0021	<0.0010	<0.0021	<77.1	2,250	630	2,880	7,920	
Trench @ 3'	3'	10/31/2011	In-Situ	<0.0011	<0.0022	<0.0011	<0.0022	<0.0011	<0.0022	17.2	233	102	352	1,550	
Trench @ 9' 6"	9.5'	10/31/2011	In-Situ	<0.0011	<0.0021	<0.0011	<0.0021	<0.0011	<0.0021	<16.2	91.4	37.1	129	1,360	
Trench @ 12'	12'	10/31/2011	In-Situ	<0.0011	<0.0022	<0.0011	<0.0022	<0.0011	<0.0022	<16.3	212	71.4	283	1,290	
Trench @ 14' 6"	14.5'	10/31/2011	In-Situ	<0.0011	<0.0022	<0.0011	<0.0022	<0.0011	<0.0022	<16.4	155	76.3	231	641	
SB-1 @ 5'	5'	11/15/2011	In-Situ	-	-	-	-	-	-	493	2,380	569	3,440	1,830	
SB-1 @ 15'	15'	11/15/2011	In-Situ	-	-	-	-	-	-	205	868	<170	1,070	503	
SB-1 @ 25'	25'	11/15/2011	In-Situ	-	-	-	-	-	-	86.1	1,910	151	2,150	378	
SB-1 @ 35'	35'	11/15/2011	In-Situ	-	-	-	-	-	-	56.4	629	70.8	756	732	
SB-1 @ 40'	40'	11/15/2011	In-Situ	-	-	-	-	-	-	22.1	238	22.6	283	186	
SB-1 @ 45'	45'	11/15/2011	In-Situ	-	-	-	-	-	-	<18.7	<18.7	<18.7	<18.7	225	
North Wall	2'	4/25/2012	In-Situ	<0.0010	<0.0020	<0.0010	<0.0020	<0.0010	<0.0020	<15.4	<15.4	<15.4	<15.4	11.3	
South Wall	2'	4/25/2012	In-Situ	<0.0010	<0.0020	<0.0010	<0.0020	<0.0010	<0.0020	<15.4	<15.4	<15.4	<15.4	14.4	
East Wall	2'	4/25/2012	In-Situ	<0.0010	<0.0020	<0.0010	<0.0020	<0.0010	<0.0020	<16.2	<16.2	<16.2	<16.2	196	
West Wall	2'	4/25/2012	In-Situ	<0.0010	<0.0020	<0.0010	<0.0020	<0.0010	<0.0020	<15.6	<15.6	<15.6	<15.6	248	
NMOCDC Criteria				10					50				1,000		

- = Not analyzed.



Photograph of the advancement of a delineation trench at the Line 2C 12" Release Site.



Photograph of the advancement of SB-1 at the Line 2C 12" Release Site.



Photograph of the installation of bentonite plug in SB-1 at the Line 2C 12" Release Site.



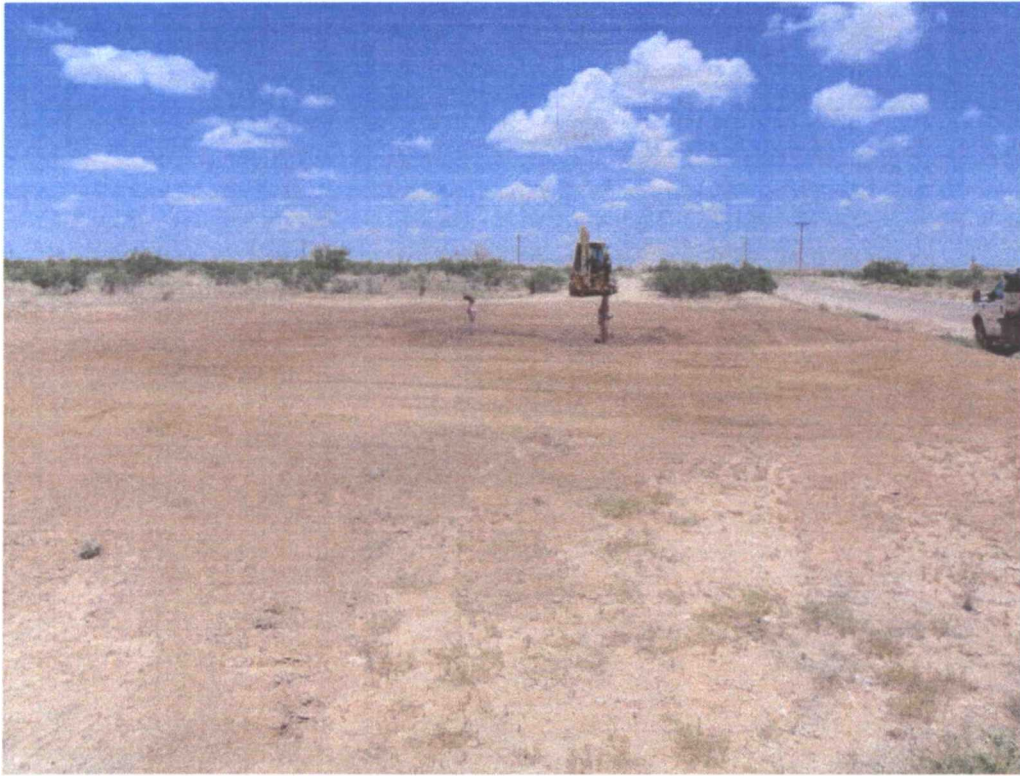
Photograph of excavation activities at the Line 2C 12" Release Site.



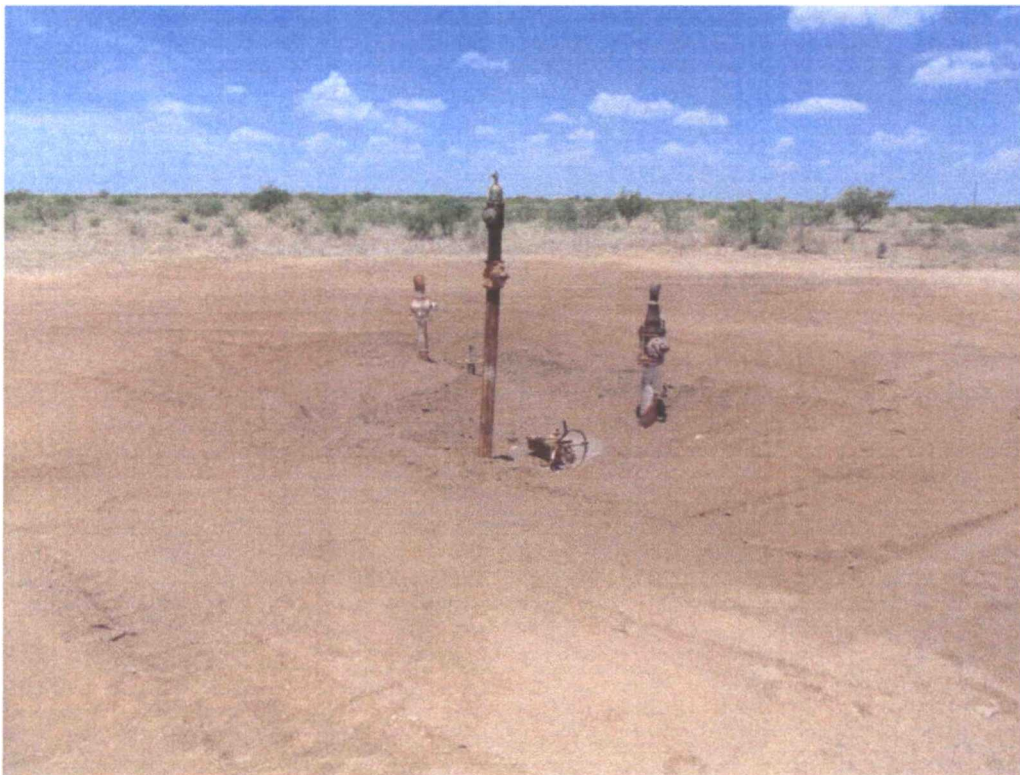
Photograph of excavation activities at the Line 2C 12" Release Site.



Photograph of installation of clay liner at the Line 2C 12" Release Site.



Photograph of the Line 2C 12" Release Site after being backfilled.



Photograph of the Line 2C 12" Release Site after being remediated.

Analytical Report 430592
for
Southern Union Gas Services- Monahans

Project Manager: Rose Slade

Line 2C 12 inch

04-NOV-11

Collected By: Client



Celebrating 20 Years of commitment to excellence in Environmental Testing Services



12600 West I-20 East Odessa, Texas 79765

Xenco-Houston (EPA Lab code: TX00122):

Texas (T104704215-10-6-TX), Arizona (AZ0765), Arkansas (08-039-0), Connecticut (PH-0102), Florida (E871002)
Illinois (002082), Indiana (C-TX-02), Iowa (392), Kansas (E-10380), Kentucky (45), Louisiana (03054)
New Hampshire (297408), New Jersey (TX007), New York (11763), Oklahoma (9218), Pennsylvania (68-03610)
Rhode Island (LAO00312), USDA (S-44102)

Xenco-Atlanta (EPA Lab Code: GA00046):

Florida (E87429), North Carolina (483), South Carolina (98015), Utah (AALI1), West Virginia (362), Kentucky (85)
Louisiana (04176), USDA (P330-07-00105)

Xenco-Miami (EPA Lab code: FL01152): Florida (E86678), Maryland (330)

Xenco-Tampa Mobile (EPA Lab code: FL01212): Florida (E84900)

Xenco-Odessa (EPA Lab code: TX00158): Texas (T104704400-TX)

Xenco-Dallas (EPA Lab code: TX01468): Texas (T104704295-TX)

Xenco Phoenix (EPA Lab Code: AZ00901): Arizona (AZ0757)

Xenco-Phoenix Mobile (EPA Lab code: AZ00901): Arizona (AZM757)

Xenco Tucson (EPA Lab code: AZ000989): Arizona (AZ0758)



04-NOV-11

Project Manager: **Rose Slade**
Southern Union Gas Services- Monahans
1507 W. 15th Street
Monahans, TX 79756

Reference: XENCO Report No: **430592**
Line 2C 12 inch
Project Address: Jal, New Mexico

Rose Slade:

We are reporting to you the results of the analyses performed on the samples received under the project name referenced above and identified with the XENCO Report Number 430592. All results being reported under this Report Number apply to the samples analyzed and properly identified with a Laboratory ID number. Subcontracted analyses are identified in this report with either the NELAC certification number of the subcontract lab in the analyst ID field, or the complete subcontracted report attached to this report.

Unless otherwise noted in a Case Narrative, all data reported in this Analytical Report are in compliance with NELAC standards. Estimation of data uncertainty for this report is found in the quality control section of this report unless otherwise noted. Should insufficient sample be provided to the laboratory to meet the method and NELAC Matrix Duplicate and Matrix Spike requirements, then the data will be analyzed, evaluated and reported using all other available quality control measures.

The validity and integrity of this report will remain intact as long as it is accompanied by this letter and reproduced in full, unless written approval is granted by XENCO Laboratories. This report will be filed for at least 5 years in our archives after which time it will be destroyed without further notice, unless otherwise arranged with you. The samples received, and described as recorded in Report No. 430592 will be filed for 60 days, and after that time they will be properly disposed without further notice, unless otherwise arranged with you. We reserve the right to return to you any unused samples, extracts or solutions related to them if we consider so necessary (e.g., samples identified as hazardous waste, sample sizes exceeding analytical standard practices, controlled substances under regulated protocols, etc).

We thank you for selecting XENCO Laboratories to serve your analytical needs. If you have any questions concerning this report, please feel free to contact us at any time.

Respectfully,

Brent Barron II

Odessa Laboratory Manager

Recipient of the Prestigious Small Business Administration Award of Excellence in 1994.

Certified and approved by numerous States and Agencies.

A Small Business and Minority Status Company that delivers SERVICE and QUALITY

Houston - Dallas - San Antonio - Austin - Tampa - Miami - Atlanta - Corpus Christi - Latin America



Sample Cross Reference 430592



Southern Union Gas Services- Monahans, Monahans, TX

Line 2C 12 inch

Sample Id	Matrix	Date Collected	Sample Depth	Lab Sample Id
Surface	S	10-31-11 10:00		430592-001
Trench @ 3'	S	10-31-11 10:30		430592-002
Trench @ 9' 6"	S	10-31-11 12:00		430592-003
Trench @ 12'	S	10-31-11 13:00		430592-004
Trench @ 14' 6"	S	10-31-11 14:30		430592-005



CASE NARRATIVE

Client Name: Southern Union Gas Services- Monahans

Project Name: Line 2C 12 inch



Project ID:

Work Order Number: 430592

Report Date: 04-NOV-11

Date Received: 11/01/2011

Sample receipt non conformances and comments:

None

Sample receipt non conformances and comments per sample:

None

Analytical non nonformances and comments:

Batch: LBA-873869 TPH By SW8015 Mod
SW8015MOD_NM

Batch 873869, C12-C28 Diesel Range Hydrocarbons recovered below QC limits in the Matrix Spike and Matrix Spike Duplicate.

Samples affected are: 430592-001, -002, -004, -003, -005.

The Laboratory Control Sample for C12-C28 Diesel Range Hydrocarbons is within laboratory Control Limits

SW8015MOD_NM

Batch 873869, 1-Chlorooctane recovered below QC limits . Matrix interferences is suspected; data confirmed by re-analysis

Samples affected are: 430592-005,430592-004,430592-003.

o-Terphenyl recovered below QC limits Data confirmed by re-analysis. Samples affected are: 430592-004,430592-003,430592-005,430592-001

o-Terphenyl recovered below QC limits Data not confirmed by re-analysis. Samples affected are: 613589-1-BKS,613589-1-BLK,613589-1-BSD,430456-048 S,430456-048 SD.



CASE NARRATIVE

Client Name: Southern Union Gas Services- Monahans

Project Name: Line 2C 12 inch



Project ID:
Work Order Number: 430592

Report Date: 04-NOV-11
Date Received: 11/01/2011

Batch: LBA-874014 BTEX by EPA 8021B
SW8021BM

Batch 874014, Ethylbenzene, m_p-Xylenes, o-Xylene recovered below QC limits in the Matrix Spike and Matrix Spike Duplicate. Benzene, Toluene recovered below QC limits in the Matrix Spike Duplicate.

Samples affected are: 430592-001, -002, -004, -003, -005.

The Laboratory Control Sample for Toluene, Benzene, Ethylbenzene, m_p-Xylenes , o-Xylene is within laboratory Control Limits

SW8021BM

Batch 874014, 4-Bromofluorobenzene recovered below QC limits . Matrix interferences is suspected; data not confirmed by re-analysis

Samples affected are: 430592-001.

Certificate of Analysis Summary 430592

Southern Union Gas Services- Monahans, Monahans, TX



Project Name: Line 2C 12 inch

Project Id:

Contact: Rose Slade

Project Location: Jal, New Mexico

Date Received in Lab: Tue Nov-01-11 08:26 am

Report Date: 04-NOV-11

Project Manager: Brent Barron II

Analysis Requested	Lab Id:	430592-001	430592-002	430592-003	430592-004	430592-005
	Field Id: Depth: Matrix: Sampled:	Surface SOIL Oct-31-11 10:00	Trench @ 3' SOIL Oct-31-11 10:30	Trench @ 9' 6" SOIL Oct-31-11 12:00	Trench @ 12' SOIL Oct-31-11 13:00	Trench @ 14' 6" SOIL Oct-31-11 14:30
Anions by E300	Extracted:					
	Analyzed:					
	Units/RL:					
BTX by EPA 8021B	Extracted:					
	Analyzed:					
	Units/RL:					
Chloride	Extracted:					
	Analyzed:					
	Units/RL:					
Benzene	Extracted:					
	Analyzed:					
	Units/RL:					
Toluene	Extracted:					
	Analyzed:					
	Units/RL:					
Ethylbenzene	Extracted:					
	Analyzed:					
	Units/RL:					
m_p-Xylenes	Extracted:					
	Analyzed:					
	Units/RL:					
o-Xylene	Extracted:					
	Analyzed:					
	Units/RL:					
Total Xylenes	Extracted:					
	Analyzed:					
	Units/RL:					
Total BTX	Extracted:					
	Analyzed:					
	Units/RL:					
Percent Moisture	Extracted:					
	Analyzed:					
	Units/RL:					
TPH By SW8015 Mod	Extracted:					
	Analyzed:					
	Units/RL:					
C6-C12 Gasoline Range Hydrocarbons	Extracted:					
	Analyzed:					
	Units/RL:					
C12-C28 Diesel Range Hydrocarbons	Extracted:					
	Analyzed:					
	Units/RL:					
C28-C35 Oil Range Hydrocarbons	Extracted:					
	Analyzed:					
	Units/RL:					
Total TPH	Extracted:					
	Analyzed:					
	Units/RL:					

This analytical report, and the entire data package it represents, has been made for your exclusive and confidential use. The interpretations and results expressed throughout this analytical report represent the best judgment of XENCO Laboratories. XENCO Laboratories assumes no responsibility and makes no warranty to the end use of the data hereby presented. Our liability is limited to the amount invoiced for this work order unless otherwise agreed to in writing.

Houston - Dallas - San Antonio - Atlanta - Tampa - Boca Raton - Latin America - Odessa - Corpus Christi



Brent Barron II
Odessa Laboratory Manager

Flagging Criteria

- X** In our quality control review of the data a QC deficiency was observed and flagged as noted. MS/MSD recoveries were found to be outside of the laboratory control limits due to possible matrix /chemical interference, or a concentration of target analyte high enough to affect the recovery of the spike concentration. This condition could also affect the relative percent difference in the MS/MSD.
- B** A target analyte or common laboratory contaminant was identified in the method blank. Its presence indicates possible field or laboratory contamination.
- D** The sample(s) were diluted due to targets detected over the highest point of the calibration curve, or due to matrix interference. Dilution factors are included in the final results. The result is from a diluted sample.
- E** The data exceeds the upper calibration limit; therefore, the concentration is reported as estimated.
- F** RPD exceeded lab control limits.
- J** The target analyte was positively identified below the quantitation limit and above the detection limit.
- U** Analyte was not detected.
- L** The LCS data for this analytical batch was reported below the laboratory control limits for this analyte. The department supervisor and QA Director reviewed data. The samples were either reanalyzed or flagged as estimated concentrations.
- H** The LCS data for this analytical batch was reported above the laboratory control limits. Supporting QC Data were reviewed by the Department Supervisor and QA Director. Data were determined to be valid for reporting.
- K** Sample analyzed outside of recommended hold time.
- JN** A combination of the "N" and the "J" qualifier. The analysis indicates that the analyte is "tentatively identified" and the associated numerical value may not be consistent with the amount actually present in the environmental sample.

* Surrogate recovered outside laboratory control limit.

BRL Below Reporting Limit.

RL Reporting Limit

MDL Method Detection Limit **SDL** Sample Detection Limit **LOD** Limit of Detection

PQL Practical Quantitation Limit **MQL** Method Quantitation Limit **LOQ** Limit of Quantitation

DL Method Detection Limit

NC Non-Calculable

+ Outside XENCO's scope of NELAC Accreditation.

^ NELAC or State program does not offer Accreditation at this time.

Recipient of the Prestigious Small Business Administration Award of Excellence in 1994.

Certified and approved by numerous States and Agencies.

A Small Business and Minority Status Company that delivers SERVICE and QUALITY

Houston - Dallas - San Antonio - Atlanta - Midland/Odessa - Tampa/Lakeland - Miami - Phoenix - Latin America

4143 Greenbriar Dr, Stafford, TX 77477
 9701 Harry Hines Blvd, Dallas, TX 75220
 5332 Blackberry Drive, San Antonio TX 78238
 2505 North Falkenburg Rd, Tampa, FL 33619
 5757 NW 158th St, Miami Lakes, FL 33014
 12600 West I-20 East, Odessa, TX 79765
 6017 Financial Drive, Norcross, GA 30071
 3725 E. Atlanta Ave, Phoenix, AZ 85040

Phone	Fax
(281) 240-4200	(281) 240-4280
(214) 902 0300	(214) 351-9139
(210) 509-3334	(210) 509-3335
(813) 620-2000	(813) 620-2033
(305) 823-8500	(305) 823-8555
(432) 563-1800	(432) 563-1713
(770) 449-8800	(770) 449-5477
(602) 437-0330	

Form 2 - Surrogate Recoveries

Project Name: Line 2C 12 inch

Work Orders : 430592,

Project ID:

Lab Batch #: 873869

Sample: 430592-001 / SMP

Batch: 1 Matrix: Soil

Units: mg/kg

Date Analyzed: 11/02/11 14:33

SURROGATE RECOVERY STUDY

TPH By SW8015 Mod Analytes	Amount Found [A]	True Amount [B]	Recovery %R [D]	Control Limits %R	Flags
1-Chlorooctane	75.6	99.7	76	70-135	
o-Terphenyl	29.7	49.9	60	70-135	**

Lab Batch #: 873869

Sample: 430592-002 / SMP

Batch: 1 Matrix: Soil

Units: mg/kg

Date Analyzed: 11/03/11 19:08

SURROGATE RECOVERY STUDY

TPH By SW8015 Mod Analytes	Amount Found [A]	True Amount [B]	Recovery %R [D]	Control Limits %R	Flags
1-Chlorooctane	59.6	100		70-135	
o-Terphenyl	21.9	50.0		70-135	

Lab Batch #: 873869

Sample: 430592-003 / SMP

Batch: 1 Matrix: Soil

Units: mg/kg

Date Analyzed: 11/03/11 19:45

SURROGATE RECOVERY STUDY

TPH By SW8015 Mod Analytes	Amount Found [A]	True Amount [B]	Recovery %R [D]	Control Limits %R	Flags
1-Chlorooctane	66.2	99.9	66	70-135	**
o-Terphenyl	25.3	50.0	51	70-135	**

Lab Batch #: 873869

Sample: 430592-004 / SMP

Batch: 1 Matrix: Soil

Units: mg/kg

Date Analyzed: 11/03/11 20:25

SURROGATE RECOVERY STUDY

TPH By SW8015 Mod Analytes	Amount Found [A]	True Amount [B]	Recovery %R [D]	Control Limits %R	Flags
1-Chlorooctane	56.7	99.7	57	70-135	**
o-Terphenyl	21.6	49.9	43	70-135	**

Lab Batch #: 873869

Sample: 430592-005 / SMP

Batch: 1 Matrix: Soil

Units: mg/kg

Date Analyzed: 11/03/11 21:03

SURROGATE RECOVERY STUDY

TPH By SW8015 Mod Analytes	Amount Found [A]	True Amount [B]	Recovery %R [D]	Control Limits %R	Flags
1-Chlorooctane	62.1	99.8	62	70-135	**
o-Terphenyl	23.1	49.9	46	70-135	**

* Surrogate outside of Laboratory QC limits

** Surrogates outside limits; data and surrogates confirmed by reanalysis

*** Poor recoveries due to dilution

Surrogate Recovery [D] = 100 * A / B

All results are based on MDL and validated for QC purposes.

Form 2 - Surrogate Recoveries

Project Name: Line 2C 12 inch

Work Orders : 430592,

Project ID:

Lab Batch #: 874014

Sample: 430592-001 / SMP

Batch: 1 Matrix: Soil

Units: mg/kg

Date Analyzed: 11/03/11 23:16

SURROGATE RECOVERY STUDY

BTEX by EPA 8021B	Amount Found [A]	True Amount [B]	Recovery %R [D]	Control Limits %R	Flags
Analytes					
1,4-Difluorobenzene	0.0273	0.0300	91	80-120	
4-Bromofluorobenzene	0.0227	0.0300	76	80-120	*

Lab Batch #: 874014

Sample: 430592-002 / SMP

Batch: 1 Matrix: Soil

Units: mg/kg

Date Analyzed: 11/03/11 23:39

SURROGATE RECOVERY STUDY

BTEX by EPA 8021B	Amount Found [A]	True Amount [B]	Recovery %R [D]	Control Limits %R	Flags
Analytes					
1,4-Difluorobenzene	0.0262	0.0300	87	80-120	
4-Bromofluorobenzene	0.0240	0.0300	80	80-120	

Lab Batch #: 874014

Sample: 430592-003 / SMP

Batch: 1 Matrix: Soil

Units: mg/kg

Date Analyzed: 11/04/11 00:01

SURROGATE RECOVERY STUDY

BTEX by EPA 8021B	Amount Found [A]	True Amount [B]	Recovery %R [D]	Control Limits %R	Flags
Analytes					
1,4-Difluorobenzene	0.0274	0.0300	91	80-120	
4-Bromofluorobenzene	0.0249	0.0300	83	80-120	

Lab Batch #: 874014

Sample: 430592-004 / SMP

Batch: 1 Matrix: Soil

Units: mg/kg

Date Analyzed: 11/04/11 00:23

SURROGATE RECOVERY STUDY

BTEX by EPA 8021B	Amount Found [A]	True Amount [B]	Recovery %R [D]	Control Limits %R	Flags
Analytes					
1,4-Difluorobenzene	0.0280	0.0300	93	80-120	
4-Bromofluorobenzene	0.0270	0.0300	90	80-120	

Lab Batch #: 874014

Sample: 430592-005 / SMP

Batch: 1 Matrix: Soil

Units: mg/kg

Date Analyzed: 11/04/11 00:46

SURROGATE RECOVERY STUDY

BTEX by EPA 8021B	Amount Found [A]	True Amount [B]	Recovery %R [D]	Control Limits %R	Flags
Analytes					
1,4-Difluorobenzene	0.0268	0.0300	89	80-120	
4-Bromofluorobenzene	0.0255	0.0300	85	80-120	

* Surrogate outside of Laboratory QC limits

** Surrogates outside limits; data and surrogates confirmed by reanalysis

*** Poor recoveries due to dilution

Surrogate Recovery [D] = $100 * A / B$

All results are based on MDL and validated for QC purposes.

Form 2 - Surrogate Recoveries

Project Name: Line 2C 12 inch

Work Orders : 430592,

Project ID:

Lab Batch #: 873869

Sample: 613589-1-BLK / BLK

Batch: 1 Matrix: Solid

Units: mg/kg	Date Analyzed: 11/02/11 12:54	SURROGATE RECOVERY STUDY			
TPH By SW8015 Mod		Amount Found [A]	True Amount [B]	Recovery %R [D]	Control Limits %R
Analytes					Flags
1-Chlorooctane		82.2	100	82	70-135
o-Terphenyl		32.2	50.0	64	70-135 *

Lab Batch #: 874014

Sample: 613677-1-BLK / BLK

Batch: 1 Matrix: Solid

Units: mg/kg	Date Analyzed: 11/03/11 17:35	SURROGATE RECOVERY STUDY			
BTEX by EPA 8021B		Amount Found [A]	True Amount [B]	Recovery %R [D]	Control Limits %R
Analytes					Flags
1,4-Difluorobenzene		0.0272	0.0300	91	80-120
4-Bromofluorobenzene		0.0272	0.0300	91	80-120

Lab Batch #: 873869

Sample: 613589-1-BKS / BKS

Batch: 1 Matrix: Solid

Units: mg/kg	Date Analyzed: 11/02/11 11:53	SURROGATE RECOVERY STUDY			
TPH By SW8015 Mod		Amount Found [A]	True Amount [B]	Recovery %R [D]	Control Limits %R
Analytes					Flags
1-Chlorooctane		87.7	100	88	70-135
o-Terphenyl		27.6	50.0	55	70-135 *

Lab Batch #: 874014

Sample: 613677-1-BKS / BKS

Batch: 1 Matrix: Solid

Units: mg/kg	Date Analyzed: 11/03/11 16:05	SURROGATE RECOVERY STUDY			
BTEX by EPA 8021B		Amount Found [A]	True Amount [B]	Recovery %R [D]	Control Limits %R
Analytes					Flags
1,4-Difluorobenzene		0.0286	0.0300	95	80-120
4-Bromofluorobenzene		0.0280	0.0300	93	80-120

Lab Batch #: 873869

Sample: 613589-1-BSD / BSD

Batch: 1 Matrix: Solid

Units: mg/kg	Date Analyzed: 11/02/11 12:24	SURROGATE RECOVERY STUDY			
TPH By SW8015 Mod		Amount Found [A]	True Amount [B]	Recovery %R [D]	Control Limits %R
Analytes					Flags
1-Chlorooctane		91.0	100	91	70-135
o-Terphenyl		29.0	50.0	58	70-135 *

* Surrogate outside of Laboratory QC limits

** Surrogates outside limits; data and surrogates confirmed by reanalysis

*** Poor recoveries due to dilution

Surrogate Recovery [D] = 100 * A / B

All results are based on MDL and validated for QC purposes.

Form 2 - Surrogate Recoveries

Project Name: Line 2C 12 inch

Work Orders : 430592,

Project ID:

Lab Batch #: 874014

Sample: 613677-1-BSD / BSD

Batch: 1 Matrix: Solid

Units: mg/kg	Date Analyzed: 11/03/11 16:27	SURROGATE RECOVERY STUDY			
BTEX by EPA 8021B		Amount Found [A]	True Amount [B]	Recovery %R [D]	Control Limits %R
Analytes					Flags
1,4-Difluorobenzene		0.0280	0.0300	93	80-120
4-Bromofluorobenzene		0.0275	0.0300	92	80-120

Lab Batch #: 873869

Sample: 430456-048 S / MS

Batch: 1 Matrix: Solid

Units: mg/kg	Date Analyzed: 11/02/11 18:22	SURROGATE RECOVERY STUDY			
TPH By SW8015 Mod		Amount Found [A]	True Amount [B]	Recovery %R [D]	Control Limits %R
Analytes					Flags
1-Chlorooctane		84.9	100	85	70-135
o-Terphenyl		24.1	50.0	48	70-135 *

Lab Batch #: 874014

Sample: 430803-001 S / MS

Batch: 1 Matrix: Soil

Units: mg/kg	Date Analyzed: 11/03/11 21:23	SURROGATE RECOVERY STUDY			
BTEX by EPA 8021B		Amount Found [A]	True Amount [B]	Recovery %R [D]	Control Limits %R
Analytes					Flags
1,4-Difluorobenzene		0.0283	0.0300	94	80-120
4-Bromofluorobenzene		0.0283	0.0300	94	80-120

Lab Batch #: 873869

Sample: 430456-048 SD / MSD

Batch: 1 Matrix: Solid

Units: mg/kg	Date Analyzed: 11/02/11 18:56	SURROGATE RECOVERY STUDY			
TPH By SW8015 Mod		Amount Found [A]	True Amount [B]	Recovery %R [D]	Control Limits %R
Analytes					Flags
1-Chlorooctane		87.5	100	88	70-135
o-Terphenyl		25.0	50.1	50	70-135 *

Lab Batch #: 874014

Sample: 430803-001 SD / MSD

Batch: 1 Matrix: Soil

Units: mg/kg	Date Analyzed: 11/03/11 21:46	SURROGATE RECOVERY STUDY			
BTEX by EPA 8021B		Amount Found [A]	True Amount [B]	Recovery %R [D]	Control Limits %R
Analytes					Flags
1,4-Difluorobenzene		0.0277	0.0300	92	80-120
4-Bromofluorobenzene		0.0282	0.0300	94	80-120

* Surrogate outside of Laboratory QC limits

** Surrogates outside limits; data and surrogates confirmed by reanalysis

*** Poor recoveries due to dilution

Surrogate Recovery [D] = $100 * A / B$

All results are based on MDL and validated for QC purposes.

Project Name: Line 2C 12 inch

Work Order #: 430592

Analyst: ASA

Lab Batch ID: 874014

Sample: 613677-1-BKS

Units: mg/kg

Project ID:

Date Analyzed: 11/03/2011

Matrix: Solid

Date Prepared: 11/03/2011

Batch #: 1

BLANK/BLANK SPIKE / BLANK SPIKE DUPLICATE RECOVERY STUDY												
Units: mg/kg BTEX by EPA 8021B Analytes	Blank Sample Result [A]	Spike Added [B]	Blank Spike Result [C]	Blank Spike %R [D]	Spike Added [E]	Blank Spike Duplicate Result [F]	Blk. Spk Dup. %R [G]	RPD %	Control Limits %R	Control Limits %RPD	Flag	
	Benzene	<0.00100	0.100	0.104	104	0.100	0.104	104	0	70-130	35	
	Toluene	<0.00200	0.100	0.107	107	0.100	0.107	107	0	70-130	35	
	Ethylbenzene	<0.00100	0.100	0.111	111	0.100	0.111	111	0	71-129	35	
	m_p-Xylenes	<0.00200	0.200	0.221	111	0.200	0.222	111	0	70-135	35	
	o-Xylene	<0.00100	0.100	0.110	110	0.100	0.112	112	2	71-133	35	

Analyst: BRB

Lab Batch ID: 873686

Sample: 873686-1-BKS

Units: mg/kg

Date Prepared: 11/01/2011

Batch #: 1

Date Analyzed: 11/01/2011

Matrix: Solid

BLANK /BLANK SPIKE / BLANK SPIKE DUPLICATE RECOVERY STUDY											
Units: mg/kg											
Analytes	Anions by E300										
	Blank Sample Result [A]	Spike Added [B]	Blank Spike Result [C]	Blank Spike %R [D]	Spike Added [E]	Blank Spike Duplicate Result [F]	Blk. Spk Dup. %R [G]	RPD %	Control Limits %R	Control Limits %RPD	Flag
Chloride	<0.840	20.0	23.7	119	20.0	22.9	115	3	75-125	20	

Relative Percent Difference $RPD = 200 * (C - F) / (C + F)$
Blank Spike Recovery $[D] = 100 * (C) / [B]$
Blank Spike Duplicate Recovery $[G] = 100 * (F) / [E]$
All results are based on MDL and Validated for QC Purposes

Project Name: Line 2C 12 inch

Work Order #: 430592

Analyst: ASA

Lab Batch ID: 873869

Sample: 613589-1-BKS

Units: mg/kg

Project ID:

Date Analyzed: 11/02/2011

Matrix: Solid

Date Prepared: 11/01/2011

Batch #: 1

BLANK /BLANK SPIKE / BLANK SPIKE DUPLICATE RECOVERY STUDY											
Units: mg/kg											
Analytes	TPH By SW8015 Mod										
	Blank Sample Result [A]	Spike Added [B]	Blank Spike Result [C]	Blank Spike %R [D]	Spike Added [E]	Blank Spike Duplicate Result [F]	Blk. Spk Dup. %R [G]	RPD %	Control Limits %R	Control Limits %RPD	Flag
	C6-C12 Gasoline Range Hydrocarbons	<15.0	1000	875	88	1000	878	88	0	70-135	35
	C12-C28 Diesel Range Hydrocarbons	<15.0	1000	869	87	1000	918	92	5	70-135	35

Relative Percent Difference RPD = $200 * |(C-F)/(C+F)|$
Blank Spike Recovery [D] = $100 * (C)/[B]$
Blank Spike Duplicate Recovery [G] = $100 * (F)/[E]$
All results are based on MDL and Validated for QC Purposes



Form 3 - MS Recoveries



Project Name: Line 2C 12 inch

Work Order #: 430592

Lab Batch #: 873686

Date Analyzed: 11/01/2011

QC- Sample ID: 430568-006 S

Reporting Units: mg/kg

Project ID:

Analyst: BRB

Date Prepared: 11/01/2011

Batch #: 1

Matrix: Soil

MATRIX / MATRIX SPIKE RECOVERY STUDY						
Inorganic Anions by EPA 300	Parent Sample Result [A]	Spike Added [B]	Spiked Sample Result [C]	%R [D]	Control Limits %R	Flag
Analytes						
Chloride	46.3	214	276	107	75-125	

Lab Batch #: 873686

Date Analyzed: 11/01/2011

QC- Sample ID: 430592-001 S

Reporting Units: mg/kg

Date Prepared: 11/01/2011

Analyst: BRB

Batch #: 1

Matrix: Soil

MATRIX / MATRIX SPIKE RECOVERY STUDY						
Inorganic Anions by EPA 300	Parent Sample Result [A]	Spike Added [B]	Spiked Sample Result [C]	%R [D]	Control Limits %R	Flag
Analytes						
Chloride	7920	4130	12300	106	75-125	

Matrix Spike Percent Recovery [D] = $100 \times (C-A)/B$
Relative Percent Difference [E] = $200 \times (C-A)/(C+B)$
All Results are based on MDL and Validated for QC Purposes

BRL - Below Reporting Limit



Project Name: Line 2C 12 inch

Work Order #: 430592

Lab Batch ID: 874014

Date Analyzed: 11/03/2011

Reporting Units: mg/kg

Project ID:

QC- Sample ID: 430803-001 S Batch #: 1 Matrix: Soil

Date Prepared: 11/03/2011 Analyst: ASA

MATRIX SPIKE / MATRIX SPIKE DUPLICATE RECOVERY STUDY													
Reporting Units: mg/kg	BTEX by EPA 8021B Analytes	Parent Sample Result [A]	Spike Added [B]	Spiked Sample Result [C]	Spiked Sample %R [D]	Spike Added [E]	Duplicate Spiked Sample Result [F]	Spiked Dup. %R [G]	RPD %	Control Limits %R	Control Limits %RPD	Flag	
		Benzene	<0.00105	0.105	0.0829	79	0.104	0.0712	68	15	70-130	35	X
		Toluene	<0.00210	0.105	0.0750	71	0.104	0.0654	63	14	70-130	35	X
		Ethylbenzene	<0.00105	0.105	0.0621	59	0.104	0.0526	51	17	71-129	35	X
		m_p-Xylenes	<0.00210	0.210	0.1116	55	0.208	0.0983	47	17	70-135	35	X
		o-Xylene	<0.00105	0.105	0.0572	54	0.104	0.0494	48	15	71-133	35	X

Lab Batch ID: 873869

Date Analyzed: 11/02/2011

Reporting Units: mg/kg

QC- Sample ID: 430456-048 S Batch #: 1 Matrix: Solid

Date Prepared: 11/01/2011 Analyst: ASA

Reporting Units: mg/kg											
MATRIX SPIKE / MATRIX SPIKE DUPLICATE RECOVERY STUDY											
TPH By SW8015 Mod Analytes	Parent Sample Result [A]	Spike Added [B]	Spiked Sample Result [C]	Spiked Sample %R [D]	Spike Added [E]	Duplicate Spiked Sample Result [F]	Spiked Dup. %R [G]	RPD %	Control Limits %R	Control Limits %RPD	Flag
	230	1030	1000	75	1040	1050	79	5	70-135	35	
	1420	1030	1800	37	1040	1960	52	9	70-135	35	X
	C6-C12 Gasoline Range Hydrocarbons										
C12-C28 Diesel Range Hydrocarbons											

Matrix Spike Percent Recovery [D] = 100*(C-A)/B

Relative Percent Difference RPD = 200*(C-F)/(C+F)

ND = Not Detected, J = Present Below Reporting Limit, B = Present in Blank, NR = Not Requested, I = Interference, NA = Not

ApplicableN = See Narrative, EQL = Estimated Quantitation Limit

Matrix Spike Duplicate Percent Recovery [G] = 100*(F-A)/E

Project Name: Line 2C 12 inch

Work Order #: 430592

Lab Batch #: 873686

Date Analyzed: 11/01/2011 22:58

QC- Sample ID: 430568-006 D

Reporting Units: mg/kg

Date Prepared: 11/01/2011

Batch #: 1

Project ID:

Analyst: BRB

Matrix: Soil

SAMPLE / SAMPLE DUPLICATE RECOVERY					
Anions by E300	Parent Sample Result [A]	Sample Duplicate Result [B]	RPD	Control Limits %RPD	Flag
Analyte					
Chloride	46.3	45.6	2	20	

Lab Batch #: 873702

Date Analyzed: 11/01/2011 11:30

QC- Sample ID: 430592-001 D

Reporting Units: %

Date Prepared: 11/01/2011

Batch #: 1

Analyst: BRB

Matrix: Soil

SAMPLE / SAMPLE DUPLICATE RECOVERY					
Percent Moisture	Parent Sample Result [A]	Sample Duplicate Result [B]	RPD	Control Limits %RPD	Flag
Analyte					
Percent Moisture	3.06	3.19	4	20	

Spike Relative Difference $RPD = 200 * |(B-A)/(B+A)|$

All Results are based on MDL and validated for QC purposes.

BRL - Below Reporting Limit



XENCO Laboratories
Atlanta, Boca Raton, Corpus Christi, Dallas
Houston, Miami, Odessa, Philadelphia
Phoenix, San Antonio, Tampa

Document Title: Sample Receipt Checklist
Document No.: SYS-SRC
Revision/Date: No. 01, 5/27/2010
Effective Date: 6/1/2010 Page 1 of 1

Prelogin / Nonconformance Report - Sample Log-In

Client: SUGS
Date/Time: 11/1/11 8:26
Lab ID #: 430592
Initials: BR

Sample Receipt Checklist

1. Samples on ice?	Blue	Water	No	
2. Shipping container in good condition?	Yes	No	None	
3. Custody seals intact on shipping container (cooler) and bottles?	Yes	No	N/A	
4. Chain of Custody present?	Yes	No		
5. Sample instructions complete on chain of custody?	Yes	No		
6. Any missing / extra samples?	Yes	No		
7. Chain of custody signed when relinquished / received?	Yes	No		
8. Chain of custody agrees with sample label(s)?	Yes	No		
9. Container labels legible and intact?	Yes	No		
10. Sample matrix / properties agree with chain of custody?	Yes	No		
11. Samples in proper container / bottle?	Yes	No		
12. Samples properly preserved?	Yes	No	N/A	
13. Sample container intact?	Yes	No		
14. Sufficient sample amount for indicated test(s)?	Yes	No		
15. All samples received within sufficient hold time?	Yes	No		
16. Subcontract of sample(s)?	Yes	No	N/A	
17. VOC sample have zero head space?	Yes	No	N/A	
18. Cooler 1 No.	Cooler 2 No.	Cooler 3 No.	Cooler 4 No.	Cooler 5 No.
lbs 3.0 °C	lbs °C	lbs °C	lbs °C	lbs °C

Nonconformance Documentation

Contact: _____ Contacted by: _____ Date/Time: _____

Regarding: _____

Corrective Action Taken: _____

Check all that apply: ☐ Cooling process has begun shortly after sampling event and out of temperature condition acceptable by NELAC 5.5.8.3.1.a.1.
☐ Initial and Backup Temperature confirm out of temperature conditions
☐ Client understands and would like to proceed with analysis

Analytical Report 431842
for
Southern Union Gas Services- Monahans

Project Manager: Rose Slade

Line 2C 12-Inch

29-NOV-11

Collected By: Client



Celebrating 20 Years of commitment to excellence in Environmental Testing Services



12600 West I-20 East Odessa, Texas 79765

Xenco-Houston (EPA Lab code: TX00122):

Texas (T104704215-10-6-TX), Arizona (AZ0765), Arkansas (08-039-0), Connecticut (PH-0102), Florida (E871002)
Illinois (002082), Indiana (C-TX-02), Iowa (392), Kansas (E-10380), Kentucky (45), Louisiana (03054)
New Hampshire (297408), New Jersey (TX007), New York (11763), Oklahoma (9218), Pennsylvania (68-03610)
Rhode Island (LAO00312), USDA (S-44102)

Xenco-Atlanta (EPA Lab Code: GA00046):

Florida (E87429), North Carolina (483), South Carolina (98015), Utah (AALI1), West Virginia (362), Kentucky (85)
Louisiana (04176), USDA (P330-07-00105)

Xenco-Miami (EPA Lab code: FL01152): Florida (E86678), Maryland (330)

Xenco-Tampa Mobile (EPA Lab code: FL01212): Florida (E84900)

Xenco-Odessa (EPA Lab code: TX00158): Texas (T104704400-TX)

Xenco-Dallas (EPA Lab code: TX01468): Texas (T104704295-TX)

Xenco Phoenix (EPA Lab Code: AZ00901): Arizona (AZ0757)

Xenco-Phoenix Mobile (EPA Lab code: AZ00901): Arizona (AZM757)

Xenco Tucson (EPA Lab code: AZ000989): Arizona (AZ0758)



29-NOV-11

Project Manager: **Rose Slade**
Southern Union Gas Services- Monahans
1507 W. 15th Street
Monahans, TX 79756

Reference: XENCO Report No: **431842**
Line 2C 12-Inch
Project Address: Lea County, NM

Rose Slade:

We are reporting to you the results of the analyses performed on the samples received under the project name referenced above and identified with the XENCO Report Number 431842. All results being reported under this Report Number apply to the samples analyzed and properly identified with a Laboratory ID number. Subcontracted analyses are identified in this report with either the NELAC certification number of the subcontract lab in the analyst ID field, or the complete subcontracted report attached to this report.

Unless otherwise noted in a Case Narrative, all data reported in this Analytical Report are in compliance with NELAC standards. Estimation of data uncertainty for this report is found in the quality control section of this report unless otherwise noted. Should insufficient sample be provided to the laboratory to meet the method and NELAC Matrix Duplicate and Matrix Spike requirements, then the data will be analyzed, evaluated and reported using all other available quality control measures.

The validity and integrity of this report will remain intact as long as it is accompanied by this letter and reproduced in full, unless written approval is granted by XENCO Laboratories. This report will be filed for at least 5 years in our archives after which time it will be destroyed without further notice, unless otherwise arranged with you. The samples received, and described as recorded in Report No. 431842 will be filed for 60 days, and after that time they will be properly disposed without further notice, unless otherwise arranged with you. We reserve the right to return to you any unused samples, extracts or solutions related to them if we consider so necessary (e.g., samples identified as hazardous waste, sample sizes exceeding analytical standard practices, controlled substances under regulated protocols, etc).

We thank you for selecting XENCO Laboratories to serve your analytical needs. If you have any questions concerning this report, please feel free to contact us at any time.

Respectfully,

Brent Barron II

Odessa Laboratory Manager

Recipient of the Prestigious Small Business Administration Award of Excellence in 1994.

Certified and approved by numerous States and Agencies.

A Small Business and Minority Status Company that delivers SERVICE and QUALITY

Houston - Dallas - San Antonio - Austin - Tampa - Miami - Atlanta - Corpus Christi - Latin America



Sample Cross Reference 431842



Southern Union Gas Services- Monahans, Monahans, TX

Line 2C 12-Inch

Sample Id	Matrix	Date Collected	Sample Depth	Lab Sample Id
SB-1@5'	S	11-15-11 13:00		431842-001
SB-1@15'	S	11-15-11 13:10		431842-002
SB-1@25'	S	11-15-11 13:20		431842-003
SB-1@35'	S	11-15-11 13:30		431842-004
SB-1@40'	S	11-15-11 13:35		431842-005
SB-1@45'	S	11-15-11 13:40		431842-006



CASE NARRATIVE

Client Name: Southern Union Gas Services- Monahans

Project Name: Line 2C 12-Inch



Project ID:

Work Order Number: 431842

Report Date: 29-NOV-11

Date Received: 11/18/2011

Sample receipt non conformances and comments:

None

Sample receipt non conformances and comments per sample:

None

Analytical non nonformances and comments:

*Batch: LBA-875412 Anions by E300
E300MI*

Batch 875412, Chloride recovered below QC limits in the Matrix Spike.

Samples affected are: 431842-005, -003, -001, -004, -002, -006.

The Laboratory Control Sample for Chloride is within laboratory Control Limits

Certificate of Analysis Summary 431842

Southern Union Gas Services- Monahans, Monahans, TX



Project Name: Line 2C 12-Inch

Project Id:

Contact: Rose Slade

Project Location: Lea County, NM

Date Received in Lab: Fri Nov-18-11 11:25 am

Report Date: 29-NOV-11

Project Manager: Brent Barron II

<i>Analysis Requested</i>		Lab Id:	431842-001	431842-002	431842-003	431842-004	431842-005	431842-006
		Field Id:	SB-1@5'	SB-1@15'	SB-1@25'	SB-1@35'	SB-1@40'	SB-1@45'
		Depth:						
		Matrix:	SOIL	SOIL	SOIL	SOIL	SOIL	SOIL
		Sampled:	Nov-15-11 13:00	Nov-15-11 13:10	Nov-15-11 13:20	Nov-15-11 13:30	Nov-15-11 13:35	Nov-15-11 13:40
Anions by E300		Extracted:						
		Analyzed:	Nov-21-11 11:53	Nov-21-11 11:53	Nov-21-11 11:53	Nov-21-11 11:53	Nov-21-11 11:53	Nov-21-11 11:53
		Units/RL:	mg/kg RL 1830 45.6	mg/kg RL 503 23.9	mg/kg RL 378 8.90	mg/kg RL 732 23.5	mg/kg RL 186 8.94	mg/kg RL 225 10.5
Percent Moisture		Extracted:						
		Analyzed:	Nov-22-11 11:00	Nov-22-11 11:00	Nov-22-11 11:00	Nov-22-11 11:00	Nov-22-11 11:00	Nov-22-11 11:00
		Units/RL:	% RL 7.83 1.00	% RL 12.0 1.00	% RL 5.63 1.00	% RL 10.5 1.00	% RL 6.02 1.00	% RL 19.9 1.00
TPH By SW8015 Mod		Extracted:	Nov-23-11 13:00	Nov-23-11 13:00	Nov-23-11 13:00	Nov-23-11 13:00	Nov-23-11 13:00	Nov-23-11 13:00
		Analyzed:	Nov-24-11 19:54	Nov-24-11 20:26	Nov-24-11 21:01	Nov-24-11 21:38	Nov-24-11 22:15	Nov-24-11 22:52
		Units/RL:	mg/kg RL 493 326	mg/kg RL 205 170	mg/kg RL 86.1 15.9	mg/kg RL 56.4 16.7	mg/kg RL 22.1 15.9	mg/kg RL ND 18.7
C6-C12 Gasoline Range Hydrocarbons			2380 326	868 170	1910 15.9	629 16.7	238 15.9	ND 18.7
C12-C28 Diesel Range Hydrocarbons			569 326	ND 170	151 15.9	70.8 16.7	22.6 15.9	ND 18.7
C28-C35 Oil Range Hydrocarbons			3440 326	1070 170	2150 15.9	756 16.7	283 15.9	ND 18.7
Total TPH								

This analytical report, and the entire data package it represents, has been made for your exclusive and confidential use. The interpretations and results expressed throughout this analytical report represent the best judgment of XENCO Laboratories. XENCO Laboratories assumes no responsibility and makes no warranty to the end use of the data hereby presented. Our liability is limited to the amount invoiced for this work order unless otherwise agreed to in writing.

Houston - Dallas - San Antonio - Atlanta - Tampa - Boca Raton - Latin America - Odessa - Corpus Christi

Version: 1.0%



Brent Barron II
Odessa Laboratory Manager

Flagging Criteria

- X** In our quality control review of the data a QC deficiency was observed and flagged as noted. MS/MSD recoveries were found to be outside of the laboratory control limits due to possible matrix /chemical interference, or a concentration of target analyte high enough to affect the recovery of the spike concentration. This condition could also affect the relative percent difference in the MS/MSD.
- B** A target analyte or common laboratory contaminant was identified in the method blank. Its presence indicates possible field or laboratory contamination.
- D** The sample(s) were diluted due to targets detected over the highest point of the calibration curve, or due to matrix interference. Dilution factors are included in the final results. The result is from a diluted sample.
- E** The data exceeds the upper calibration limit; therefore, the concentration is reported as estimated.
- F** RPD exceeded lab control limits.
- J** The target analyte was positively identified below the quantitation limit and above the detection limit.
- U** Analyte was not detected.
- L** The LCS data for this analytical batch was reported below the laboratory control limits for this analyte. The department supervisor and QA Director reviewed data. The samples were either reanalyzed or flagged as estimated concentrations.
- H** The LCS data for this analytical batch was reported above the laboratory control limits. Supporting QC Data were reviewed by the Department Supervisor and QA Director. Data were determined to be valid for reporting.
- K** Sample analyzed outside of recommended hold time.
- JN** A combination of the "N" and the "J" qualifier. The analysis indicates that the analyte is "tentatively identified" and the associated numerical value may not be consistent with the amount actually present in the environmental sample.

* Surrogate recovered outside laboratory control limit.

BRL Below Reporting Limit.

RL Reporting Limit

MDL Method Detection Limit **SDL** Sample Detection Limit **LOD** Limit of Detection

PQL Practical Quantitation Limit **MQL** Method Quantitation Limit **LOQ** Limit of Quantitation

DL Method Detection Limit

NC Non-Calculable

+ Outside XENCO's scope of NELAC Accreditation.

^ NELAC or State program does not offer Accreditation at this time.

Recipient of the Prestigious Small Business Administration Award of Excellence in 1994.

Certified and approved by numerous States and Agencies.

A Small Business and Minority Status Company that delivers SERVICE and QUALITY

Houston - Dallas - San Antonio - Atlanta - Midland/Odessa - Tampa/Lakeland - Miami - Phoenix - Latin America

4143 Greenbriar Dr, Stafford, TX 77477
 9701 Harry Hines Blvd, Dallas, TX 75220
 5332 Blackberry Drive, San Antonio TX 78238
 2505 North Falkenburg Rd, Tampa, FL 33619
 5757 NW 158th St, Miami Lakes, FL 33014
 12600 West I-20 East, Odessa, TX 79765
 6017 Financial Drive, Norcross, GA 30071
 3725 E. Atlanta Ave, Phoenix, AZ 85040

Phone	Fax
(281) 240-4200	(281) 240-4280
(214) 902 0300	(214) 351-9139
(210) 509-3334	(210) 509-3335
(813) 620-2000	(813) 620-2033
(305) 823-8500	(305) 823-8555
(432) 563-1800	(432) 563-1713
(770) 449-8800	(770) 449-5477
(602) 437-0330	

Form 2 - Surrogate Recoveries

Project Name: Line 2C 12-Inch

Work Orders : 431842,

Project ID:

Lab Batch #: 875684

Sample: 431842-001 / SMP

Batch: 1 Matrix: Soil

Units: mg/kg

Date Analyzed: 11/24/11 19:54

SURROGATE RECOVERY STUDY

TPH By SW8015 Mod Analytes	Amount Found [A]	True Amount [B]	Recovery %R [D]	Control Limits %R	Flags
1-Chlorooctane	120	100	120	70-135	
o-Terphenyl	61.9	50.1	124	70-135	

Lab Batch #: 875684

Sample: 431842-002 / SMP

Batch: 1 Matrix: Soil

Units: mg/kg

Date Analyzed: 11/24/11 20:26

SURROGATE RECOVERY STUDY

TPH By SW8015 Mod Analytes	Amount Found [A]	True Amount [B]	Recovery %R [D]	Control Limits %R	Flags
1-Chlorooctane	110	99.9	110	70-135	
o-Terphenyl	55.3	50.0	111	70-135	

Lab Batch #: 875684

Sample: 431842-003 / SMP

Batch: 1 Matrix: Soil

Units: mg/kg

Date Analyzed: 11/24/11 21:01

SURROGATE RECOVERY STUDY

TPH By SW8015 Mod Analytes	Amount Found [A]	True Amount [B]	Recovery %R [D]	Control Limits %R	Flags
1-Chlorooctane	101	100	101	70-135	
o-Terphenyl	48.7	50.0	97	70-135	

Lab Batch #: 875684

Sample: 431842-004 / SMP

Batch: 1 Matrix: Soil

Units: mg/kg

Date Analyzed: 11/24/11 21:38

SURROGATE RECOVERY STUDY

TPH By SW8015 Mod Analytes	Amount Found [A]	True Amount [B]	Recovery %R [D]	Control Limits %R	Flags
1-Chlorooctane	108	99.7	108	70-135	
o-Terphenyl	53.7	49.9	108	70-135	

Lab Batch #: 875684

Sample: 431842-005 / SMP

Batch: 1 Matrix: Soil

Units: mg/kg

Date Analyzed: 11/24/11 22:15

SURROGATE RECOVERY STUDY

TPH By SW8015 Mod Analytes	Amount Found [A]	True Amount [B]	Recovery %R [D]	Control Limits %R	Flags
1-Chlorooctane	95.1	99.7	95	70-135	
o-Terphenyl	46.2	49.9	93	70-135	

* Surrogate outside of Laboratory QC limits

** Surrogates outside limits; data and surrogates confirmed by reanalysis

*** Poor recoveries due to dilution

Surrogate Recovery [D] = $100 * A / B$

All results are based on MDL and validated for QC purposes.

Form 2 - Surrogate Recoveries

Project Name: Line 2C 12-Inch

Work Orders : 431842,

Project ID:

Lab Batch #: 875684

Sample: 431842-006 / SMP

Batch: 1 Matrix: Soil

Units: mg/kg

Date Analyzed: 11/24/11 22:52

SURROGATE RECOVERY STUDY

TPH By SW8015 Mod	Amount Found [A]	True Amount [B]	Recovery %R [D]	Control Limits %R	Flags
Analytes					
1-Chlorooctane	97.8	99.8	98	70-135	
o-Terphenyl	45.8	49.9	92	70-135	

Lab Batch #: 875684

Sample: 614623-1-BLK / BLK

Batch: 1 Matrix: Solid

Units: mg/kg

Date Analyzed: 11/24/11 12:22

SURROGATE RECOVERY STUDY

TPH By SW8015 Mod	Amount Found [A]	True Amount [B]	Recovery %R [D]	Control Limits %R	Flags
Analytes					
1-Chlorooctane	105	100	105	70-135	
o-Terphenyl	45.6	50.0	91	70-135	

Lab Batch #: 875684

Sample: 614623-1-BKS / BKS

Batch: 1 Matrix: Solid

Units: mg/kg

Date Analyzed: 11/24/11 11:22

SURROGATE RECOVERY STUDY

TPH By SW8015 Mod	Amount Found [A]	True Amount [B]	Recovery %R [D]	Control Limits %R	Flags
Analytes					
1-Chlorooctane	111	100	111	70-135	
o-Terphenyl	44.5	50.0	89	70-135	

Lab Batch #: 875684

Sample: 614623-1-BSD / BSD

Batch: 1 Matrix: Solid

Units: mg/kg

Date Analyzed: 11/24/11 11:52

SURROGATE RECOVERY STUDY

TPH By SW8015 Mod	Amount Found [A]	True Amount [B]	Recovery %R [D]	Control Limits %R	Flags
Analytes					
1-Chlorooctane	117	100	117	70-135	
o-Terphenyl	47.3	50.0	95	70-135	

Lab Batch #: 875684

Sample: 431842-006 S / MS

Batch: 1 Matrix: Soil

Units: mg/kg

Date Analyzed: 11/25/11 01:16

SURROGATE RECOVERY STUDY

TPH By SW8015 Mod	Amount Found [A]	True Amount [B]	Recovery %R [D]	Control Limits %R	Flags
Analytes					
1-Chlorooctane	109	99.9	109	70-135	
o-Terphenyl	46.7	50.0	93	70-135	

* Surrogate outside of Laboratory QC limits

** Surrogates outside limits; data and surrogates confirmed by reanalysis

*** Poor recoveries due to dilution

Surrogate Recovery [D] = 100 * A / B

All results are based on MDL and validated for QC purposes.



Form 2 - Surrogate Recoveries

Project Name: Line 2C 12-Inch

Work Orders : 431842,

Lab Batch #: 875684

Sample: 431842-006 SD / MSD

Project ID:

Batch: 1 Matrix: Soil

Units: mg/kg

Date Analyzed: 11/25/11 01:53

SURROGATE RECOVERY STUDY

TPH By SW8015 Mod Analytes	Amount Found [A]	True Amount [B]	Recovery %R [D]	Control Limits %R	Flags
1-Chlorooctane	118	99.7	118	70-135	
o-Terphenyl	51.6	49.9	103	70-135	

* Surrogate outside of Laboratory QC limits

** Surrogates outside limits; data and surrogates confirmed by reanalysis

*** Poor recoveries due to dilution

Surrogate Recovery [D] = $100 * A / B$

All results are based on MDL and validated for QC purposes.

Project Name: Line 2C 12-Inch

Work Order #: 431842

Analyst: BRB

Lab Batch ID: 875412

Sample: 875412-1-BKS

Units: mg/kg

Date Prepared: 11/21/2011

Batch #: 1

Project ID:
Date Analyzed: 11/21/2011

Matrix: Solid

BLANK /BLANK SPIKE / BLANK SPIKE DUPLICATE RECOVERY STUDY											
Units: mg/kg											
Anions by E300	Blank Sample Result [A]	Spike Added [B]	Blank Spike Result [C]	Blank Spike %R [D]	Spike Added [E]	Blank Spike Duplicate Result [F]	Blk. Spk Dup. %R [G]	RPD %	Control Limits %R	Control Limits %RPD	Flag
Analytes											
Chloride	<0.840	20.0	20.5	103	20.0	20.7	104	1	75-125	20	

Analyst: ASA

Lab Batch ID: 875684

Sample: 614623-1-BKS

Units: mg/kg

Date Prepared: 11/23/2011

Batch #: 1

Date Analyzed: 11/24/2011

Matrix: Solid

BLANK /BLANK SPIKE / BLANK SPIKE DUPLICATE RECOVERY STUDY											
Units: mg/kg											
Analytes	TPH By SW8015 Mod										
	Blank Sample Result [A]	Spike Added [B]	Blank Spike Result [C]	Blank Spike %R [D]	Spike Added [E]	Blank Spike Duplicate Result [F]	Blk. Spk Dup. %R [G]	RPD %	Control Limits %R	Control Limits %RPD	Flag
C6-C12 Gasoline Range Hydrocarbons	<15.0	1000	752	75	1000	770	77	2	70-135	35	
C12-C28 Diesel Range Hydrocarbons	<15.0	1000	810	81	1000	858	86	6	70-135	35	

Relative Percent Difference RPD = $200 * ((C-F) / (C+F))$
Blank Spike Recovery [D] = $100 * (C) / [B]$
Blank Spike Duplicate Recovery [G] = $100 * (F) / [E]$
All results are based on MDL and Validated for QC Purposes



Form 3 - MS Recoveries



Project Name: Line 2C 12-Inch

Work Order #: 431842

Lab Batch #: 875412

Date Analyzed: 11/21/2011

Date Prepared: 11/21/2011

Project ID:

Analyst: BRB

QC- Sample ID: 431840-001 S

Batch #: 1

Matrix: Soil

Reporting Units: mg/kg

MATRIX / MATRIX SPIKE RECOVERY STUDY						
Inorganic Anions by EPA 300	Parent Sample Result [A]	Spike Added [B]	Spiked Sample Result [C]	%R [D]	Control Limits %R	Flag
Analytes						
Chloride	13.1	107	122	102	75-125	

Lab Batch #: 875412

Date Analyzed: 11/21/2011

Date Prepared: 11/21/2011

Analyst: BRB

QC- Sample ID: 431840-007 S

Batch #: 1

Matrix: Soil

Reporting Units: mg/kg

MATRIX / MATRIX SPIKE RECOVERY STUDY						
Inorganic Anions by EPA 300	Parent Sample Result [A]	Spike Added [B]	Spiked Sample Result [C]	%R [D]	Control Limits %R	Flag
Analytes						
Chloride	114	107	220	99	75-125	

Matrix Spike Percent Recovery $[D] = 100 \times (C-A)/B$
Relative Percent Difference $[E] = 200 \times (C-A)/(C+B)$
All Results are based on MDL and Validated for QC Purposes

BRL - Below Reporting Limit



Project Name: Line 2C 12-Inch

Work Order # : 431842

Lab Batch ID: 875684

Date Analyzed: 11/25/2011

Reporting Units: mg/kg

Project ID:

QC- Sample ID: 431842-006 S Batch #: 1 Matrix: Soil

Date Prepared: 11/23/2011 Analyst: ASA

Reporting Units: mg/kg											
MATRIX SPIKE / MATRIX SPIKE DUPLICATE RECOVERY STUDY											
TPH By SW8015 Mod Analytes	Parent Sample Result [A]	Spike Added [B]	Spiked Sample Result [C]	Spiked Sample %R [D]	Spike Added [E]	Duplicate Spiked Sample Result [F]	Spiked Dup. %R [G]	RPD %	Control Limits %R	Control Limits %RPD	Flag
	<18.7	1250	920	74	1240	979	79	6	70-135	35	
	<18.7	1250	1070	86	1240	1150	93	7	70-135	35	
	C6-C12 Gasoline Range Hydrocarbons										
C12-C28 Diesel Range Hydrocarbons											

Matrix Spike Percent Recovery $[D] = 100 \times (C-A)/B$

Relative Percent Difference $RPD = 200 \times (C-F)/(C+F)$

ND = Not Detected, J = Present Below Reporting Limit, B = Present in Blank, NR = Not Requested, I = Interference, NA = Not

ApplicableN = See Narrative, EQL = Estimated Quantitation Limit

Matrix Spike Duplicate Percent Recovery $[G] = 100 \times (F-A)/E$

Project Name: Line 2C 12-Inch

Work Order #: 431842

Lab Batch #: 875412

Date Analyzed: 11/21/2011 11:53

QC- Sample ID: 431840-001 D

Reporting Units: mg/kg

Project ID:

Analyst: BRB

Matrix: Soil

Date Prepared: 11/21/2011

Batch #: 1

SAMPLE / SAMPLE DUPLICATE RECOVERY					
Anions by E300	Parent Sample Result [A]	Sample Duplicate Result [B]	RPD	Control Limits %RPD	Flag
Analyte					
Chloride	13.1	13.1	0	20	

Lab Batch #: 875468

Date Analyzed: 11/22/2011 11:00

QC- Sample ID: 431842-001 D

Reporting Units: %

Date Prepared: 11/22/2011

Batch #: 1

Analyst: BRB

Matrix: Soil

SAMPLE / SAMPLE DUPLICATE RECOVERY					
Percent Moisture	Parent Sample Result [A]	Sample Duplicate Result [B]	RPD	Control Limits %RPD	Flag
Analyte					
Percent Moisture	7.83	8.03	3	20	

Spike Relative Difference RPD $200 * |(B-A)/(B+A)|$
 All Results are based on MDL and validated for QC purposes.
 BRL - Below Reporting Limit

Xenco Laboratories

CHAIN OF CUSTODY RECORD AND ANALYSIS REQUEST

12600 West I-20 East
Odessa, Texas 79765

Phone: 432-563-1800
Fax: 432-563-1713

Project Manager: Ben J. Argulio

Company Name: Basin Environmental Service Technologies, LLC

Company Address: P.O. Box 301

City/State/Zip: Lovington, NM 88260

Telephone No: (575) 396-2378

Fax No: (575) 396-1429

Sampler Signature: [Signature]

e-mail: bjargulio@basinenv.com; Rose Slade@SLUG.com

Project Name: Line 2C 12-Inch

Project #:

Project Loc: Lea County, NM

PO #:

Report Format: ☒ Standard ☐ TRRP ☐ NPDES

(lab use only)

ORDER #: 431842

LAB # (lab use only)	FIELD CODE	Beginning Depth	Ending Depth	Date Sampled	Time Sampled	Field Filtered	Total #. of Containers	Preservation & # of Containers	Matrix	TPH: 418.1	TPH: TX 1005	Cations (Ca, Mg, Na, K)	Anions (Cl, SO ₄ , Alkalinity)	SAR / ESP / CEC	Metals: As Ag Ba Cd Cr Pb Hg Se	Volatiles	Semivolatiles	BTEX 8021B/5030 or BTEX 8260	CHLORIDES	RUSH TAT (Pre-Schedule) 24, 48, 72 hrs	Standard TAT 4 DAY
1	SB-1 @ 5'			11/15/2011	1300		1	Ice	SOIL	8015M	8015B										
2	SB-1 @ 15'			11/15/2011	1310		1	HNO ₃	SOIL												
3	SB-1 @ 25'			11/15/2011	1320		1	HCl	SOIL												
4	SB-1 @ 35'			11/15/2011	1330		1	H ₂ SO ₄	SOIL												
5	SB-1 @ 40'			11/15/2011	1335		1	NaOH	SOIL												
6	SB-1 @ 45'			11/15/2011	1340		1	Na ₂ S ₂ O ₃	SOIL												
								None													
								Other (Specify)													
								DW=Drinking Water SL=Sludge													
								GW = Groundwater S=Soil/Solid													
								NP=Non-Potable Specify Other													

Special Instructions:
Run BTEX on sample with highest GRO value.

Relinquished by:

Date

Time

Received by:

Date

Time

Relinquished by:

Date

Time

Received by:

Date

Time

Relinquished by:

Date

Time

Received by:

Date

Time

Laboratory Comments:

Sample Containers Intact?

VOCs Free of Headspace?

Labels on container(s)

Custody seals on container(s)

Custody seals on cooler(s)

Sample Hand Delivered

by Courier? UPS DHL FedEx Lone Star

Temperature Upon Receipt: 1.5 °C



XENCO Laboratories
Atlanta, Boca Raton, Corpus Christi, Dallas
Houston, Miami, Odessa, Philadelphia
Phoenix, San Antonio, Tampa

Document Title: Sample Receipt Checklist
Document No.: SYS-SRC
Revision/Date: No. 01, 5/27/2010
Effective Date: 6/1/2010 Page 1 of 1

Prelogin / Nonconformance Report - Sample Log-In

Client: Southern Union Gas
Date/Time: 11-18-11 11:25
Lab ID #: 4318462
Initials: TD

Sample Receipt Checklist

1. Samples on ice?	Blue	<u>Water</u>	No	
2. Shipping container in good condition?	<u>Yes</u>	No	None	
3. Custody seals intact on shipping container (cooler) and bottles?	<u>Yes</u>	No	N/A	
4. Chain of Custody present?	<u>Yes</u>	No		
5. Sample instructions complete on chain of custody?	<u>Yes</u>	No		
6. Any missing / extra samples?	Yes	<u>No</u>		
7. Chain of custody signed when relinquished / received?	<u>Yes</u>	No		
8. Chain of custody agrees with sample label(s)?	<u>Yes</u>	No		
9. Container labels legible and intact?	<u>Yes</u>	No		
10. Sample matrix / properties agree with chain of custody?	<u>Yes</u>	No		
11. Samples in proper container / bottle?	<u>Yes</u>	No		
12. Samples properly preserved?	<u>Yes</u>	No	N/A	
13. Sample container intact?	<u>Yes</u>	No		
14. Sufficient sample amount for indicated test(s)?	<u>Yes</u>	No		
15. All samples received within sufficient hold time?	<u>Yes</u>	No		
16. Subcontract of sample(s)?	Yes	<u>No</u>	N/A	
17. VOC sample have zero head space?	<u>Yes</u>	No	N/A	
18. Cooler 1 No.	Cooler 2 No.	Cooler 3 No.	Cooler 4 No.	Cooler 5 No.
lbs <u>1.5</u> °C	lbs °C	lbs °C	lbs °C	lbs °C

Nonconformance Documentation

Contact: _____ Contacted by: _____ Date/Time: _____

Regarding: _____

Corrective Action Taken: _____

Check all that apply: ☐ Cooling process has begun shortly after sampling event and out of temperature condition acceptable by NELAC 5.5.8.3.1.a.1.
☐ Initial and Backup Temperature confirm out of temperature conditions
☐ Client understands and would like to proceed with analysis

Analytical Report 441438
for
Southern Union Gas Services- Monahans

Project Manager: Rose Slade

Line 2C 12-Inch

Southern Union Gas

04-MAY-12

Collected By: Client



Celebrating 20 Years of commitment to excellence in Environmental Testing Services



12600 West I-20 East Odessa, Texas 79765

Xenco-Houston (EPA Lab code: TX00122):

Texas (T104704215-10-6-TX), Arizona (AZ0765), Arkansas (08-039-0), Connecticut (PH-0102), Florida (E871002)
Illinois (002082), Indiana (C-TX-02), Iowa (392), Kansas (E-10380), Kentucky (45), Louisiana (03054)
New Hampshire (297408), New Jersey (TX007), New York (11763), Oklahoma (9218), Pennsylvania (68-03610)
Rhode Island (LAO00312), USDA (S-44102)

Xenco-Atlanta (EPA Lab Code: GA00046):

Florida (E87429), North Carolina (483), South Carolina (98015), Utah (AALI1), West Virginia (362), Kentucky (85)
Louisiana (04176), USDA (P330-07-00105)

Xenco-Tampa Mobile (EPA Lab code: FL01212): Florida (E84900)

Xenco-Lakeland: Florida (E84098)

Xenco-Odessa (EPA Lab code: TX00158): Texas (T104704400-TX)

Xenco-Dallas (EPA Lab code: TX01468): Texas (T104704295-TX)

Xenco Phoenix (EPA Lab Code: AZ00901): Arizona (AZ0757)

Xenco-Phoenix Mobile (EPA Lab code: AZ00901): Arizona (AZM757)

Xenco Tucson (EPA Lab code: AZ000989): Arizona (AZ0758)



04-MAY-12

Project Manager: **Rose Slade**
Southern Union Gas Services- Monahans
801 South Loop 464
Monahans, TX 79756

Reference: XENCO Report No: **441438**
Line 2C 12-Inch
Project Address: Lea County, NM

Rose Slade:

We are reporting to you the results of the analyses performed on the samples received under the project name referenced above and identified with the XENCO Report Number 441438. All results being reported under this Report Number apply to the samples analyzed and properly identified with a Laboratory ID number. Subcontracted analyses are identified in this report with either the NELAC certification number of the subcontract lab in the analyst ID field, or the complete subcontracted report attached to this report.

Unless otherwise noted in a Case Narrative, all data reported in this Analytical Report are in compliance with NELAC standards. Estimation of data uncertainty for this report is found in the quality control section of this report unless otherwise noted. Should insufficient sample be provided to the laboratory to meet the method and NELAC Matrix Duplicate and Matrix Spike requirements, then the data will be analyzed, evaluated and reported using all other available quality control measures.

The validity and integrity of this report will remain intact as long as it is accompanied by this letter and reproduced in full, unless written approval is granted by XENCO Laboratories. This report will be filed for at least 5 years in our archives after which time it will be destroyed without further notice, unless otherwise arranged with you. The samples received, and described as recorded in Report No. 441438 will be filed for 60 days, and after that time they will be properly disposed without further notice, unless otherwise arranged with you. We reserve the right to return to you any unused samples, extracts or solutions related to them if we consider so necessary (e.g., samples identified as hazardous waste, sample sizes exceeding analytical standard practices, controlled substances under regulated protocols, etc).

We thank you for selecting XENCO Laboratories to serve your analytical needs. If you have any questions concerning this report, please feel free to contact us at any time.

Respectfully,

Nicholas Straccione

Project Manager

Recipient of the Prestigious Small Business Administration Award of Excellence in 1994.

Certified and approved by numerous States and Agencies.

A Small Business and Minority Status Company that delivers SERVICE and QUALITY

Houston - Dallas - Odessa - San Antonio - Tampa - Lakeland - Atlanta - Phoenix - Oklahoma - Latin America



Sample Cross Reference 441438



Southern Union Gas Services- Monahans, Monahans, TX

Line 2C 12-Inch

Sample Id	Matrix	Date Collected	Sample Depth	Lab Sample Id
North Wall	S	04-25-12 10:00		441438-001
South Wall	S	04-25-12 10:30		441438-002
West Wall	S	04-25-12 15:00		441438-003
East Wall	S	04-25-12 12:30		441438-004



CASE NARRATIVE

Client Name: Southern Union Gas Services- Monahans

Project Name: Line 2C 12-Inch



Project ID: Southern Union Gas

Work Order Number: 441438

Report Date: 04-MAY-12

Date Received: 04/27/2012

Sample receipt non conformances and comments:

None

Sample receipt non conformances and comments per sample:

None

Analytical non nonformances and comments:

Batch: LBA-886999 TPH By SW8015 Mod

SW8015MOD_NM

Batch 886999, C6-C12 Gasoline Range Hydrocarbons recovered below QC limits in the Matrix Spike and Matrix Spike Duplicate.

Samples affected are: 441438-002, -001, -004, -003.

The Laboratory Control Sample for C6-C12 Gasoline Range Hydrocarbons is within laboratory Control Limits



Certificate of Analysis Summary 441438

Southern Union Gas Services- Monahans, Monahans, TX



Project Id: Southern Union Gas
Contact: Rose Slade
Project Location: Lea County, NM

Project Name: Line 2C 12-Inch

Date Received in Lab: Fri Apr-27-12 08:11 am

Report Date: 04-MAY-12

Project Manager: Nicholas Straccione

<i>Analysis Requested</i>		Lab Id:	441438-001	441438-002	441438-003	441438-004	
		Field Id:	North Wall	South Wall	West Wall	East Wall	
		Depth:					
		Matrix:	SOIL	SOIL	SOIL	SOIL	
		Sampled:	Apr-25-12 10:00	Apr-25-12 10:30	Apr-25-12 15:00	Apr-25-12 12:30	
Anions by E300		Extracted:					
		Analyzed:	Apr-30-12 14:00	Apr-30-12 14:00	Apr-30-12 14:00	Apr-30-12 14:00	
		Units/RL:	mg/kg RL	mg/kg RL	mg/kg RL	mg/kg RL	
Chloride			11.3 8.65	14.4 4.32	196 9.07	248 4.37	
BTEX by EPA 8021B		Extracted:	Apr-30-12 15:00	Apr-30-12 15:00	Apr-30-12 15:00	Apr-30-12 15:00	
		Analyzed:	Apr-30-12 18:44	Apr-30-12 20:36	Apr-30-12 20:58	Apr-30-12 21:21	
		Units/RL:	mg/kg RL	mg/kg RL	mg/kg RL	mg/kg RL	
Benzene			ND 0.000998	ND 0.000996	ND 0.000996	ND 0.00100	
Toluene			ND 0.00200	ND 0.00199	ND 0.00199	ND 0.00200	
Ethylbenzene			ND 0.000998	ND 0.000996	ND 0.000996	ND 0.00100	
m_p-Xylenes			ND 0.00200	ND 0.00199	ND 0.00199	ND 0.00200	
o-Xylene			ND 0.000998	ND 0.000996	ND 0.000996	ND 0.00100	
Total Xylenes			ND 0.000998	ND 0.000996	ND 0.000996	ND 0.00100	
Total BTEX			ND 0.000998	ND 0.000996	ND 0.000996	ND 0.00100	
Percent Moisture		Extracted:					
		Analyzed:	Apr-30-12 11:30	Apr-30-12 11:30	Apr-30-12 11:30	Apr-30-12 11:30	
		Units/RL:	% RL	% RL	% RL	% RL	
Percent Moisture			2.91 1.00	2.67 1.00	7.35 1.00	3.95 1.00	
TPH By SW8015 Mod		Extracted:	May-01-12 15:00	May-01-12 15:00	May-01-12 15:00	May-01-12 15:00	
		Analyzed:	May-01-12 20:08	May-01-12 20:35	May-01-12 21:01	May-01-12 21:28	
		Units/RL:	mg/kg RL	mg/kg RL	mg/kg RL	mg/kg RL	
C6-C12 Gasoline Range Hydrocarbons			ND 15.4	ND 15.4	ND 16.2	ND 15.6	
C12-C28 Diesel Range Hydrocarbons			ND 15.4	ND 15.4	ND 16.2	ND 15.6	
C28-C35 Oil Range Hydrocarbons			ND 15.4	ND 15.4	ND 16.2	ND 15.6	
Total TPH			ND 15.4	ND 15.4	ND 16.2	ND 15.6	

This analytical report, and the entire data package it represents, has been made for your exclusive and confidential use. The interpretations and results expressed throughout this analytical report represent the best judgment of XENCO Laboratories. XENCO Laboratories assumes no responsibility and makes no warranty to the end use of the data hereby presented. Our liability is limited to the amount invoiced for this work order unless otherwise agreed to in writing.

Houston - Dallas - San Antonio - Atlanta - Tampa - Boca Raton - Latin America - Odessa - Corpus Christi

Version: 1.0%

Nicholas Straccione
Project Manager

Flagging Criteria

- X** In our quality control review of the data a QC deficiency was observed and flagged as noted. MS/MSD recoveries were found to be outside of the laboratory control limits due to possible matrix /chemical interference, or a concentration of target analyte high enough to affect the recovery of the spike concentration. This condition could also affect the relative percent difference in the MS/MSD.
- B** A target analyte or common laboratory contaminant was identified in the method blank. Its presence indicates possible field or laboratory contamination.
- D** The sample(s) were diluted due to targets detected over the highest point of the calibration curve, or due to matrix interference. Dilution factors are included in the final results. The result is from a diluted sample.
- E** The data exceeds the upper calibration limit; therefore, the concentration is reported as estimated.
- F** RPD exceeded lab control limits.
- J** The target analyte was positively identified below the quantitation limit and above the detection limit.
- U** Analyte was not detected.
- L** The LCS data for this analytical batch was reported below the laboratory control limits for this analyte. The department supervisor and QA Director reviewed data. The samples were either reanalyzed or flagged as estimated concentrations.
- H** The LCS data for this analytical batch was reported above the laboratory control limits. Supporting QC Data were reviewed by the Department Supervisor and QA Director. Data were determined to be valid for reporting.
- K** Sample analyzed outside of recommended hold time.
- JN** A combination of the "N" and the "J" qualifier. The analysis indicates that the analyte is "tentatively identified" and the associated numerical value may not be consistent with the amount actually present in the environmental sample.

* Surrogate recovered outside laboratory control limit.

BRL Below Reporting Limit.

RL Reporting Limit

MDL Method Detection Limit **SDL** Sample Detection Limit **LOD** Limit of Detection

PQL Practical Quantitation Limit **MQL** Method Quantitation Limit **LOQ** Limit of Quantitation

DL Method Detection Limit

NC Non-Calculable

+ NELAC certification not offered for this compound.

* (Next to analyte name or method description) = Outside XENCO's scope of NELAC accreditation

Recipient of the Prestigious Small Business Administration Award of Excellence in 1994.

Certified and approved by numerous States and Agencies.

A Small Business and Minority Status Company that delivers SERVICE and QUALITY

Houston - Dallas - San Antonio - Atlanta - Midland/Odessa - Tampa/Lakeland - Phoenix - Latin America

4143 Greenbriar Dr, Stafford, TX 77477
 9701 Harry Hines Blvd, Dallas, TX 75220
 5332 Blackberry Drive, San Antonio TX 78238
 2505 North Falkenburg Rd, Tampa, FL 33619
 12600 West I-20 East, Odessa, TX 79765
 6017 Financial Drive, Norcross, GA 30071
 3725 E. Atlanta Ave, Phoenix, AZ 85040

Phone	Fax
(281) 240-4200	(281) 240-4280
(214) 902 0300	(214) 351-9139
(210) 509-3334	(210) 509-3335
(813) 620-2000	(813) 620-2033
(432) 563-1800	(432) 563-1713
(770) 449-8800	(770) 449-5477
(602) 437-0330	

Form 2 - Surrogate Recoveries

Project Name: Line 2C 12-Inch

Work Orders : 441438,

Project ID: Southern Union Gas

Lab Batch #: 886834

Sample: 441438-001 / SMP

Batch: 1 Matrix: Soil

Units: mg/kg

Date Analyzed: 04/30/12 18:44

SURROGATE RECOVERY STUDY

BTEX by EPA 8021B	Amount Found [A]	True Amount [B]	Recovery %R [D]	Control Limits %R	Flags
Analytes					
1,4-Difluorobenzene	0.0268	0.0300	89	80-120	
4-Bromofluorobenzene	0.0257	0.0300	86	80-120	

Lab Batch #: 886834

Sample: 441438-002 / SMP

Batch: 1 Matrix: Soil

Units: mg/kg

Date Analyzed: 04/30/12 20:36

SURROGATE RECOVERY STUDY

BTEX by EPA 8021B	Amount Found [A]	True Amount [B]	Recovery %R [D]	Control Limits %R	Flags
Analytes					
1,4-Difluorobenzene	0.0265	0.0300	88	80-120	
4-Bromofluorobenzene	0.0246	0.0300	82	80-120	

Lab Batch #: 886834

Sample: 441438-003 / SMP

Batch: 1 Matrix: Soil

Units: mg/kg

Date Analyzed: 04/30/12 20:58

SURROGATE RECOVERY STUDY

BTEX by EPA 8021B	Amount Found [A]	True Amount [B]	Recovery %R [D]	Control Limits %R	Flags
Analytes					
1,4-Difluorobenzene	0.0254	0.0300	85	80-120	
4-Bromofluorobenzene	0.0245	0.0300	82	80-120	

Lab Batch #: 886834

Sample: 441438-004 / SMP

Batch: 1 Matrix: Soil

Units: mg/kg

Date Analyzed: 04/30/12 21:21

SURROGATE RECOVERY STUDY

BTEX by EPA 8021B	Amount Found [A]	True Amount [B]	Recovery %R [D]	Control Limits %R	Flags
Analytes					
1,4-Difluorobenzene	0.0259	0.0300	86	80-120	
4-Bromofluorobenzene	0.0248	0.0300	83	80-120	

Lab Batch #: 886999

Sample: 441438-001 / SMP

Batch: 1 Matrix: Soil

Units: mg/kg

Date Analyzed: 05/01/12 20:08

SURROGATE RECOVERY STUDY

TPH By SW8015 Mod	Amount Found [A]	True Amount [B]	Recovery %R [D]	Control Limits %R	Flags
Analytes					
1-Chlorooctane	102	99.8	102	70-135	
o-Terphenyl	56.1	49.9	112	70-135	

* Surrogate outside of Laboratory QC limits

** Surrogates outside limits; data and surrogates confirmed by reanalysis

*** Poor recoveries due to dilution

Surrogate Recovery [D] = $100 * A / B$

All results are based on MDL and validated for QC purposes.

Form 2 - Surrogate Recoveries

Project Name: Line 2C 12-Inch

Work Orders : 441438,

Project ID: Southern Union Gas

Lab Batch #: 886999

Sample: 441438-002 / SMP

Batch: 1 Matrix: Soil

Units: mg/kg

Date Analyzed: 05/01/12 20:35

SURROGATE RECOVERY STUDY

TPH By SW8015 Mod	Amount Found [A]	True Amount [B]	Recovery %R [D]	Control Limits %R	Flags
Analytes					
1-Chlorooctane	102	99.9	102	70-135	
o-Terphenyl	56.0	50.0	112	70-135	

Lab Batch #: 886999

Sample: 441438-003 / SMP

Batch: 1 Matrix: Soil

Units: mg/kg

Date Analyzed: 05/01/12 21:01

SURROGATE RECOVERY STUDY

TPH By SW8015 Mod	Amount Found [A]	True Amount [B]	Recovery %R [D]	Control Limits %R	Flags
Analytes					
1-Chlorooctane	103	100	103	70-135	
o-Terphenyl	57.7	50.1	115	70-135	

Lab Batch #: 886999

Sample: 441438-004 / SMP

Batch: 1 Matrix: Soil

Units: mg/kg

Date Analyzed: 05/01/12 21:28

SURROGATE RECOVERY STUDY

TPH By SW8015 Mod	Amount Found [A]	True Amount [B]	Recovery %R [D]	Control Limits %R	Flags
Analytes					
1-Chlorooctane	101	99.7	101	70-135	
o-Terphenyl	56.1	49.9	112	70-135	

Lab Batch #: 886834

Sample: 621196-1-BLK / BLK

Batch: 1 Matrix: Solid

Units: mg/kg

Date Analyzed: 04/30/12 14:59

SURROGATE RECOVERY STUDY

BTEX by EPA 8021B	Amount Found [A]	True Amount [B]	Recovery %R [D]	Control Limits %R	Flags
Analytes					
1,4-Difluorobenzene	0.0262	0.0300	87	80-120	
4-Bromofluorobenzene	0.0244	0.0300	81	80-120	

Lab Batch #: 886999

Sample: 621292-1-BLK / BLK

Batch: 1 Matrix: Solid

Units: mg/kg

Date Analyzed: 05/01/12 19:15

SURROGATE RECOVERY STUDY

TPH By SW8015 Mod	Amount Found [A]	True Amount [B]	Recovery %R [D]	Control Limits %R	Flags
Analytes					
1-Chlorooctane	98.1	100	98	70-135	
o-Terphenyl	55.3	50.0	111	70-135	

* Surrogate outside of Laboratory QC limits

** Surrogates outside limits; data and surrogates confirmed by reanalysis

*** Poor recoveries due to dilution

Surrogate Recovery [D] = 100 * A / B

All results are based on MDL and validated for QC purposes.



Form 2 - Surrogate Recoveries

Project Name: Line 2C 12-Inch

Work Orders : 441438,

Project ID: Southern Union Gas

Lab Batch #: 886834

Sample: 621196-1-BKS / BKS

Batch: 1 Matrix: Solid

Units: mg/kg

Date Analyzed: 04/30/12 13:29

SURROGATE RECOVERY STUDY

BTEX by EPA 8021B	Amount Found [A]	True Amount [B]	Recovery %R [D]	Control Limits %R	Flags
Analytes					
1,4-Difluorobenzene	0.0293	0.0300	98	80-120	
4-Bromofluorobenzene	0.0296	0.0300	99	80-120	

Lab Batch #: 886999

Sample: 621292-1-BKS / BKS

Batch: 1 Matrix: Solid

Units: mg/kg

Date Analyzed: 05/01/12 18:21

SURROGATE RECOVERY STUDY

TPH By SW8015 Mod	Amount Found [A]	True Amount [B]	Recovery %R [D]	Control Limits %R	Flags
Analytes					
1-Chlorooctane	116	100	116	70-135	
o-Terphenyl	60.5	50.0	121	70-135	

Lab Batch #: 886834

Sample: 621196-1-BSD / BSD

Batch: 1 Matrix: Solid

Units: mg/kg

Date Analyzed: 04/30/12 13:52

SURROGATE RECOVERY STUDY

BTEX by EPA 8021B	Amount Found [A]	True Amount [B]	Recovery %R [D]	Control Limits %R	Flags
Analytes					
1,4-Difluorobenzene	0.0296	0.0300	99	80-120	
4-Bromofluorobenzene	0.0277	0.0300	92	80-120	

Lab Batch #: 886999

Sample: 621292-1-BSD / BSD

Batch: 1 Matrix: Solid

Units: mg/kg

Date Analyzed: 05/01/12 18:48

SURROGATE RECOVERY STUDY

TPH By SW8015 Mod	Amount Found [A]	True Amount [B]	Recovery %R [D]	Control Limits %R	Flags
Analytes					
1-Chlorooctane	117	100	117	70-135	
o-Terphenyl	53.0	50.0	106	70-135	

Lab Batch #: 886999

Sample: 441607-001 S / MS

Batch: 1 Matrix: Soil

Units: mg/kg

Date Analyzed: 05/02/12 05:40

SURROGATE RECOVERY STUDY

TPH By SW8015 Mod	Amount Found [A]	True Amount [B]	Recovery %R [D]	Control Limits %R	Flags
Analytes					
1-Chlorooctane	113	99.7	113	70-135	
o-Terphenyl	59.7	49.9	120	70-135	

* Surrogate outside of Laboratory QC limits

** Surrogates outside limits; data and surrogates confirmed by reanalysis

*** Poor recoveries due to dilution

Surrogate Recovery [D] = $100 * A / B$

All results are based on MDL and validated for QC purposes.



Form 2 - Surrogate Recoveries

Project Name: Line 2C 12-Inch

Work Orders : 441438,

Lab Batch #: 886999

Sample: 441607-001 SD / MSD

Project ID: Southern Union Gas

Batch: 1 Matrix: Soil

Units: mg/kg

Date Analyzed: 05/02/12 06:07

SURROGATE RECOVERY STUDY

TPH By SW8015 Mod Analytes	Amount Found [A]	True Amount [B]	Recovery %R [D]	Control Limits %R	Flags
1-Chlorooctane	117	99.5	118	70-135	
o-Terphenyl	60.0	49.8	120	70-135	

* Surrogate outside of Laboratory QC limits

** Surrogates outside limits; data and surrogates confirmed by reanalysis

*** Poor recoveries due to dilution

Surrogate Recovery [D] = $100 * A / B$

All results are based on MDL and validated for QC purposes.

Project Name: Line 2C 12-Inch

Work Order #: 441438

Analyst: SMG

Lab Batch ID: 886834

Sample: 621196-1-BKS

Units: mg/kg

Project ID: Southern Union Gas

Date Analyzed: 04/30/2012

Matrix: Solid

Date Prepared: 04/30/2012

Batch #: 1

BLANK /BLANK SPIKE / BLANK SPIKE DUPLICATE RECOVERY STUDY											
Units: mg/kg											
Analytes	BTEX by EPA 8021B										
	Blank Sample Result [A]	Spike Added [B]	Blank Spike Result [C]	Blank Spike %R [D]	Spike Added [E]	Blank Spike Duplicate Result [F]	Blk. Spk Dup. %R [G]	RPD %	Control Limits %R	Control Limits %RPD	Flag
	Benzene	<0.00100	0.100	0.0995	100	0.100	0.0929	93	7	70-130	35
	Toluene	<0.00200	0.100	0.0988	99	0.100	0.0918	92	7	70-130	35
	Ethylbenzene	<0.00100	0.100	0.0966	97	0.100	0.0877	88	10	71-129	35
	m_p-Xylenes	<0.00200	0.200	0.201	101	0.200	0.181	91	10	70-135	35
	o-Xylene	<0.00100	0.100	0.101	101	0.100	0.0912	91	10	71-133	35

Analyst: SMG

Lab Batch ID: 887203

Sample: 887203-1-BKS

Units: mg/kg

Date Prepared: 04/30/2012

Batch #: 1

Date Analyzed: 04/30/2012

Matrix: Solid

BLANK /BLANK SPIKE / BLANK SPIKE DUPLICATE RECOVERY STUDY											
Units: mg/kg											
Analytes	Anions by E300										
	Blank Sample Result [A]	Spike Added [B]	Blank Spike Result [C]	Blank Spike %R [D]	Spike Added [E]	Blank Spike Duplicate Result [F]	Blk. Spk Dup. %R [G]	RPD %	Control Limits %R	Control Limits %RPD	Flag
Chloride	<0.840	20.0	20.6	103	20.0	20.2	101	2	75-125	20	

Relative Percent Difference RPD = $200 * |(C-F)/(C+F)|$

Blank Spike Recovery [D] = $100 * (C)/[B]$

Blank Spike Duplicate Recovery [G] = $100 * (F)/[E]$

All results are based on MDL and Validated for QC Purposes

Project Name: Line 2C 12-Inch

Work Order #: 441438

Analyst: ASA

Lab Batch ID: 886999

Sample: 621292-1-BKS

Units: mg/kg

Project ID: Southern Union Gas
Date Analyzed: 05/01/2012

Matrix: Solid

Date Prepared: 05/01/2012

Batch #: 1

BLANK /BLANK SPIKE / BLANK SPIKE DUPLICATE RECOVERY STUDY												
Units: mg/kg												
TPH By SW8015 Mod		Blank Sample Result [A]	Spike Added [B]	Blank Spike Result [C]	Blank Spike %R [D]	Spike Added [E]	Blank Spike Duplicate Result [F]	Blk. Spk Dup. %R [G]	RPD %	Control Limits %R	Control Limits %RPD	Flag
Analytes												
C6-C12 Gasoline Range Hydrocarbons		<15.0	1000	778	78	1000	788	79	1	70-135	35	
C12-C28 Diesel Range Hydrocarbons		<15.0	1000	1010	101	1000	1040	104	3	70-135	35	

Relative Percent Difference RPD = $200 * [(C-F)/(C+F)]$
Blank Spike Recovery [D] = $100 * (C)/[B]$
Blank Spike Duplicate Recovery [G] = $100 * (F)/[E]$
All results are based on MDL and Validated for QC Purposes



Form 3 - MS Recoveries



Project Name: Line 2C 12-Inch

Work Order #: 441438

Lab Batch #: 887203

Date Analyzed: 04/30/2012

Date Prepared: 04/30/2012

Project ID: Southern Union Gas

Analyst: SMG

QC- Sample ID: 441438-001 S

Batch #: 1

Matrix: Soil

Reporting Units: mg/kg

MATRIX / MATRIX SPIKE RECOVERY STUDY						
Inorganic Anions by EPA 300	Parent Sample Result [A]	Spike Added [B]	Spiked Sample Result [C]	%R [D]	Control Limits %R	Flag
Analytes						
Chloride	11.3	206	210	96	75-125	

Matrix Spike Percent Recovery [D] = $100 \times (C-A)/B$
Relative Percent Difference [E] = $200 \times (C-A)/(C+B)$
All Results are based on MDL and Validated for QC Purposes

BRL - Below Reporting Limit

Version: 1.0%



Form 3 - MS / MSD Recoveries



Project Name: Line 2C 12-Inch

Work Order #: 441438

Lab Batch ID: 886999

Date Analyzed: 05/02/2012

Reporting Units: mg/kg

Project ID: Southern Union Gas

QC- Sample ID: 441607-001 S Batch #: 1 Matrix: Soil

Date Prepared: 05/01/2012 Analyst: ASA

MATRIX SPIKE / MATRIX SPIKE DUPLICATE RECOVERY STUDY												
Reporting Units: mg/kg	TPH By SW8015 Mod Analytes	Parent Sample Result [A]	Spike Added [B]	Spiked Sample Result [C]	Spiked Sample %R [D]	Spike Added [E]	Duplicate Spiked Sample Result [F]	Spiked Dup. %R [G]	RPD %	Control Limits %R	Control Limits %RPD	Flag
	C6-C12 Gasoline Range Hydrocarbons	131	1110	863	66	1100	873	67	1	70-135	35	X
	C12-C28 Diesel Range Hydrocarbons	109	1110	1100	89	1100	1110	91	1	70-135	35	

Matrix Spike Percent Recovery $[D] = 100 \times (C-A)/B$
Relative Percent Difference $RPD = 200 \times [(C-F)/(C+F)]$

Matrix Spike Duplicate Percent Recovery $[G] = 100 \times (F-A)/E$

ND = Not Detected, J = Present Below Reporting Limit, B = Present in Blank, NR = Not Requested, I = Interference, NA = Not Applicable
N = See Narrative, EQL = Estimated Quantitation Limit

Project Name: Line 2C 12-Inch

Work Order #: 441438

Lab Batch #: 887203

Project ID: Southern Union Gas

Date Analyzed: 04/30/2012 14:00

Date Prepared: 04/30/2012

Analyst: SMG

QC- Sample ID: 441438-001 D

Batch #: 1

Matrix: Soil

Reporting Units: mg/kg

SAMPLE / SAMPLE DUPLICATE RECOVERY					
Anions by E300	Parent Sample Result [A]	Sample Duplicate Result [B]	RPD	Control Limits %RPD	Flag
Analyte					
Chloride	11.3	10.8	5	20	

Lab Batch #: 886879

Date Analyzed: 04/30/2012 11:30

Date Prepared: 04/30/2012

Analyst: WRU

QC- Sample ID: 441438-001 D

Batch #: 1

Matrix: Soil

Reporting Units: %

SAMPLE / SAMPLE DUPLICATE RECOVERY					
Percent Moisture	Parent Sample Result [A]	Sample Duplicate Result [B]	RPD	Control Limits %RPD	Flag
Analyte					
Percent Moisture	2.91	2.92	0	20	

Spike Relative Difference RPD $200 * |(B-A)/(B+A)|$
 All Results are based on MDL and validated for QC purposes.
 BRL - Below Reporting Limit



XENCO Laboratories
Atlanta, Boca Raton, Corpus Christi, Dallas
Houston, Miami, Odessa, Philadelphia
Phoenix, San Antonio, Tampa

Document Title: Sample Receipt Checklist
Document No.: SYS-SRC
Revision/Date: No. 01, 5/27/2010
Effective Date: 6/1/2010 Page 1 of 1

Prelogin / Nonconformance Report - Sample Log-In

Client: Basin / SUGS
Date/Time: 4-27-12 08:11
Lab ID #: 441438
Initials: SG/AE

Sample Receipt Checklist

1. Samples on ice?	Blue	Water	No	
2. Shipping container in good condition?	<u>Yes</u>	No	None	
3. Custody seals intact on shipping container (cooler) and bottles?	<u>Yes</u>	No	N/A	
4. Chain of Custody present?	<u>Yes</u>	No		
5. Sample instructions complete on chain of custody?	<u>Yes</u>	No		
6. Any missing / extra samples?	Yes	<u>No</u>		
7. Chain of custody signed when relinquished / received?	<u>Yes</u>	No		
8. Chain of custody agrees with sample label(s)?	<u>Yes</u>	No		
9. Container labels legible and intact?	<u>Yes</u>	No		
10. Sample matrix / properties agree with chain of custody?	<u>Yes</u>	No		
11. Samples in proper container / bottle?	<u>Yes</u>	No		
12. Samples properly preserved?	<u>Yes</u>	No	N/A	
13. Sample container intact?	<u>Yes</u>	No		
14. Sufficient sample amount for indicated test(s)?	<u>Yes</u>	No		
15. All samples received within sufficient hold time?	<u>Yes</u>	No		
16. Subcontract of sample(s)?	<u>Yes</u>	No	N/A	
17. VOC sample have zero head space?	<u>Yes</u>	No	N/A	
18. Cooler 1 No.	Cooler 2 No.	Cooler 3 No.	Cooler 4 No.	Cooler 5 No.
lbs <u>2.5</u> °C	lbs °C	lbs °C	lbs °C	lbs °C

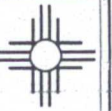
Nonconformance Documentation

Contact: _____ Contacted by: _____ Date/Time: _____

Regarding: _____

Corrective Action Taken: _____

Check all that apply: ☐ Cooling process has begun shortly after sampling event and out of temperature condition acceptable by NELAC 5.5.8.3.1.a.1.
☐ Initial and Backup Temperature confirm out of temperature conditions
☐ Client understands and would like to proceed with analysis



SUNDANCE SERVICES, Inc.

P.O. Box 1737 Eunice, New Mexico 88231
(575) 394-2511

TICKET No. 202907

LEASE OPERATOR/SHIPPER/COMPANY: 5416

LEASE NAME: 11/20-12

TRANSPORTER COMPANY: Triple H Truck

DATE: 11/21-12 VEHICLE NO: 01

CHARGE TO: 516 RIG NAME AND NUMBER

TIME 12:19 AM/PM

GENERATOR COMPANY
MAN'S NAME: Justin Stanley

TYPE OF MATERIAL

- | | | |
|---|---|-----------------------------------|
| <input type="checkbox"/> Production Water | <input type="checkbox"/> Drilling Fluids | <input type="checkbox"/> Rinsate |
| <input type="checkbox"/> Tank Bottoms | <input checked="" type="checkbox"/> Contaminated Soil | <input type="checkbox"/> Jet Out |
| <input type="checkbox"/> Solids | <input type="checkbox"/> BS&W Content: | <input type="checkbox"/> Call Out |

Description: CIP

RRC or API # C-133#

VOLUME OF MATERIAL ☐ BBLs ☒ YARD 12 ☐

AS A CONDITION TO SUNDANCE SERVICES, INC.'S ACCEPTANCE OF THE MATERIALS SHIPPED WITH THIS JOB TICKET, OPERATOR/SHIPPER REPRESENTS AND WARRANTS THAT THE WASTE MATERIAL SHIPPED HEREWITH IS MATERIAL EXEMPT FROM THE RESOURCE, CONSERVATION AND RECOVERY ACT OF 1976, AS AMENDED FROM TIME TO TIME, 40 U.S.C. § 6901, et seq., THE NM HEALTH AND SAF. CODE § 361.001 et seq., AND REGULATIONS RELATED THERETO, BY VIRTUE OF THE EXEMPTION AFFORDED DRILLING FLUIDS, PRODUCED WATERS, AND OTHER WASTE ASSOCIATED WITH THE EXPLORATION, DEVELOPMENT OR PRODUCTION OF CRUDE OIL OR NATURAL GAS OR GEOTHERMAL ENERGY.

ALSO AS A CONDITION TO SUNDANCE SERVICES, INC.'S ACCEPTANCE OF THE MATERIALS SHIPPED WITH THIS JOB TICKET, TRANSPORTER REPRESENTS AND WARRANTS THAT ONLY THE MATERIAL DELIVERED BY OPERATOR/SHIPPER TO TRANSPORTER IS NOW DELIVERED BY TRANSPORTER TO SUNDANCE SERVICES, INC.'S FACILITY FOR DISPOSAL.

THIS WILL CERTIFY that the above Transporter loaded the material represented by this Transporter Statement at the above described location, and that it was tendered by the above described shipper. This will certify that no additional materials were added to this load, and that the material was delivered without incident.

DRIVER: Justin Stanley

(SIGNATURE)

FACILITY REPRESENTATIVE: A. Stanley

(SIGNATURE)

White - Sundance Canary - Sundance Acct #1 Pink - Transporter



SUNDANCE SERVICES, Inc.

P.O. Box 1737 Eunice, New Mexico 88231
(575) 394-2511

TICKET No. 202879

LEASE OPERATOR/SHIPPER/COMPANY: S119

LEASE NAME: Line 20-12"

TRANSPORTER COMPANY: Triple M Truck

DATE: 1-27-12 VEHICLE NO: 61

TIME 11:51 AM/PM

GENERATOR COMPANY
MAN'S NAME: Art Gentry

RIG NAME
AND NUMBER

CHARGE TO: S119

TYPE OF MATERIAL

- ☐ Production Water ☐ Drilling Fluids ☐ Rinsate
☐ Tank Bottoms ☒ Contaminated Soil ☐ Jet Out
☐ Solids ☐ BS&W Content: ☐ Call Out

Description: old

RRC or API #

C-133#

VOLUME OF MATERIAL ☐ BBLs. ☒ YARD 12 : ☐

AS A CONDITION TO SUNDANCE SERVICES, INC.'S ACCEPTANCE OF THE MATERIALS SHIPPED WITH THIS JOB TICKET, OPERATOR/SHIPPER REPRESENTS AND WARRANTS THAT THE WASTE MATERIAL SHIPPED HEREWITH IS MATERIAL EXEMPT FROM THE RESOURCE, CONSERVATION AND RECOVERY ACT OF 1976, AS AMENDED FROM TIME TO TIME, 40 U.S.C. § 6901, et seq., THE NM HEALTH AND SAF. CODE § 361.001 et seq., AND REGULATIONS RELATED THERETO, BY VIRTUE OF THE EXEMPTION AFFORDED DRILLING FLUIDS, PRODUCED WATERS, AND OTHER WASTE ASSOCIATED WITH THE EXPLORATION, DEVELOPMENT OR PRODUCTION OF CRUDE OIL OR NATURAL GAS OR GEOTHERMAL ENERGY.

ALSO AS A CONDITION TO SUNDANCE SERVICES, INC.'S ACCEPTANCE OF THE MATERIALS SHIPPED WITH THIS JOB TICKET, TRANSPORTER REPRESENTS AND WARRANTS THAT ONLY THE MATERIAL DELIVERED BY OPERATOR/SHIPPER TO TRANSPORTER IS NOW DELIVERED BY TRANSPORTER TO SUNDANCE SERVICES, INC.'S FACILITY FOR DISPOSAL.

THIS WILL CERTIFY that the above Transporter loaded the material represented by this Transporter Statement at the above described location, and that it was tendered by the above described shipper. This will certify that no additional materials were added to this load, and that the material was delivered without incident.

DRIVER:

(SIGNATURE)

FACILITY REPRESENTATIVE:

(SIGNATURE)

White - Sundance

Canary - Sundance Acct #1

Pink - Transporter



SUNDANCE SERVICES, Inc.

P.O. Box 1737 Eunice, New Mexico 88231
(575) 394-2511

TICKET No. 202854

LEASE OPERATOR/SHIPPER/COMPANY: SUG

LEASE NAME: Line 20-12"

TRANSPORTER COMPANY: Thompson Trucking

DATE: 4-27-12 VEHICLE NO: 61

TIME AM/PM

GENERATOR COMPANY
MAN'S NAME: Paulo S. Silva

CHARGE TO: SUG

RIG NAME
AND NUMBER

TYPE OF MATERIAL

- ☐ Production Water ☐ Drilling Fluids ☐ Rinsate
☐ Tank Bottoms ☒ Contaminated Soil ☐ Jet Out
☐ Solids ☐ BS&W Content: ☐ Call Out

Description: old

RRC or API #

C-133#

VOLUME OF MATERIAL ☐ BBLs. ☒ YARD 12 : ☐

AS A CONDITION TO SUNDANCE SERVICES, INC.'S ACCEPTANCE OF THE MATERIALS SHIPPED WITH THIS JOB TICKET, OPERATOR/SHIPPER REPRESENTS AND WARRANTS THAT THE WASTE MATERIAL SHIPPED HEREWITH IS MATERIAL EXEMPT FROM THE RESOURCE, CONSERVATION AND RECOVERY ACT OF 1976, AS AMENDED FROM TIME TO TIME, 40 U.S.C. § 6901, et seq., THE NM HEALTH AND SAF. CODE § 361.001 et seq., AND REGULATIONS RELATED THERETO, BY VIRTUE OF THE EXEMPTION AFFORDED DRILLING FLUIDS, PRODUCED WATERS, AND OTHER WASTE ASSOCIATED WITH THE EXPLORATION, DEVELOPMENT OR PRODUCTION OF CRUDE OIL OR NATURAL GAS OR GEOTHERMAL ENERGY.

ALSO AS A CONDITION TO SUNDANCE SERVICES, INC.'S ACCEPTANCE OF THE MATERIALS SHIPPED WITH THIS JOB TICKET, TRANSPORTER REPRESENTS AND WARRANTS THAT ONLY THE MATERIAL DELIVERED BY OPERATOR/SHIPPER TO TRANSPORTER IS NOW DELIVERED BY TRANSPORTER TO SUNDANCE SERVICES, INC.'S FACILITY FOR DISPOSAL.

THIS WILL CERTIFY that the above Transporter loaded the material represented by this Transporter Statement at the above described location, and that it was tendered by the above described shipper. This will certify that no additional materials were added to this load, and that the material was delivered without incident.

DRIVER:

(SIGNATURE)

FACILITY REPRESENTATIVE:

(SIGNATURE)

White - Sundance

Canary - Sundance Acct #1

Pink - Transporter



SUNDANCE SERVICES, Inc.

P.O. Box 1737 Eunice, New Mexico 88231
(575) 394-2511

TICKET No. 202937

LEASE OPERATOR/SHIPPER/COMPANY: SUG

LEASE NAME: Line 20-12"

TRANSPORTER COMPANY: Truck N Truck

TIME 2:00 AM/PM

DATE: 4-27-12 VEHICLE NO: 61

GENERATOR COMPANY
MAIN'S NAME: 2011 Stanley

CHARGE TO: SUG

RIG NAME
AND NUMBER

TYPE OF MATERIAL

- ☐ Production Water ☐ Drilling Fluids ☐ Rinsate
☐ Tank Bottoms ☒ Contaminated Soil ☐ Jet Out
☐ Solids ☐ BS&W Content: ☐ Call Out

Description: OLD

RRC or API #

C-133#

VOLUME OF MATERIAL ☐ BBLs. ☒ YARD 12 : ☐

AS A CONDITION TO SUNDANCE SERVICES, INC.'S ACCEPTANCE OF THE MATERIALS SHIPPED WITH THIS JOB TICKET, OPERATOR/SHIPPER REPRESENTS AND WARRANTS THAT THE WASTE MATERIAL SHIPPED HEREWITH IS MATERIAL EXEMPT FROM THE RESOURCE, CONSERVATION AND RECOVERY ACT OF 1976, AS AMENDED FROM TIME TO TIME, 40 U.S.C. § 6901, et seq., THE NM HEALTH AND SAFETY CODE § 361.001 et seq., AND REGULATIONS RELATED THERETO, BY VIRTUE OF THE EXEMPTION AFFORDED DRILLING FLUIDS, PRODUCED WATERS, AND OTHER WASTE ASSOCIATED WITH THE EXPLORATION, DEVELOPMENT OR PRODUCTION OF CRUDE OIL OR NATURAL GAS OR GEOTHERMAL ENERGY.

ALSO AS A CONDITION TO SUNDANCE SERVICES, INC.'S ACCEPTANCE OF THE MATERIALS SHIPPED WITH THIS JOB TICKET, TRANSPORTER REPRESENTS AND WARRANTS THAT ONLY THE MATERIAL DELIVERED BY OPERATOR/SHIPPER TO TRANSPORTER IS NOW DELIVERED BY TRANSPORTER TO SUNDANCE SERVICES, INC.'S FACILITY FOR DISPOSAL.

THIS WILL CERTIFY that the above Transporter loaded the material represented by this Transporter Statement at the above described location, and that it was tendered by the above described shipper. This will certify that no additional materials were added to this load, and that the material was delivered without incident.

DRIVER:

(SIGNATURE)

FACILITY REPRESENTATIVE:

(SIGNATURE)

White - Sundance

Canary - Sundance Acct #1

Pink - Transporter



SUNDANCE SERVICES, Inc.

P.O. Box 1737 Eunice, New Mexico 88231
(575) 394-2511

TICKET No. 202909

LEASE OPERATOR/SHIPPER/COMPANY: SUG

LEASE NAME: Line 2C-12"

TRANSPORTER COMPANY: Triple H Truck

DATE: 11-27-12 VEHICLE NO: 13

TIME AM/PM

GENERATOR COMPANY
MAN'S NAME: Paul Shank

CHARGE TO: SUG

RIG NAME
AND NUMBER

TYPE OF MATERIAL

- ☐ Production Water ☐ Drilling Fluids ☐ Rinsate
☐ Tank Bottoms ☒ Contaminated Soil ☐ Jet Out
☐ Solids ☐ BS&W Content: ☐ Call Out

Description: old

RRC or API #

C-133#

VOLUME OF MATERIAL ☐ BBLs. ☒ YARD 12 : ☐

AS A CONDITION TO SUNDANCE SERVICES, INC.'S ACCEPTANCE OF THE MATERIALS SHIPPED WITH THIS JOB TICKET, OPERATOR/SHIPPER REPRESENTS AND WARRANTS THAT THE WASTE MATERIAL SHIPPED HERewith IS MATERIAL EXEMPT FROM THE RESOURCE, CONSERVATION AND RECOVERY ACT OF 1976, AS AMENDED FROM TIME TO TIME, 40 U.S.C. § 6901, et seq., THE NM HEALTH AND SAF. CODE § 361.001 et seq., AND REGULATIONS RELATED THERETO, BY VIRTUE OF THE EXEMPTION AFFORDED DRILLING FLUIDS, PRODUCED WATERS, AND OTHER WASTE ASSOCIATED WITH THE EXPLORATION, DEVELOPMENT OR PRODUCTION OF CRUDE OIL OR NATURAL GAS OR GEOTHERMAL ENERGY.

ALSO AS A CONDITION TO SUNDANCE SERVICES, INC.'S ACCEPTANCE OF THE MATERIALS SHIPPED WITH THIS JOB TICKET, TRANSPORTER REPRESENTS AND WARRANTS THAT ONLY THE MATERIAL DELIVERED BY OPERATOR/SHIPPER TO TRANSPORTER IS NOW DELIVERED BY TRANSPORTER TO SUNDANCE SERVICES, INC.'S FACILITY FOR DISPOSAL.

THIS WILL CERTIFY that the above Transporter loaded the material represented by this Transporter Statement at the above described location, and that it was tendered by the above described shipper. This will certify that no additional materials were added to this load, and that the material was delivered without incident.

DRIVER:

(SIGNATURE)

FACILITY REPRESENTATIVE:

(SIGNATURE)

White - Sundance

Canary - Sundance Acct #1

Pink - Transporter



SUNDANCE SERVICES, Inc.

P.O. Box 1737 Eunice, New Mexico 88231
(575) 394-2511

TICKET No. 202883

LEASE OPERATOR/SHIPPER/COMPANY: SUG

LEASE NAME: Line 20-12"

TRANSPORTER COMPANY: Triple M Truck

TIME 1:50 PM

DATE: 4-27-12 VEHICLE NO: 13

GENERATOR COMPANY
MAN'S NAME: COTSHLEY

CHARGE TO: SUG

RIG NAME
AND NUMBER

TYPE OF MATERIAL

- ☐ Production Water ☐ Drilling Fluids ☐ Rinsate
☐ Tank Bottoms ☒ Contaminated Soil ☐ Jet Out
☐ Solids ☐ BS&W Content: ☐ Call Out

Description: OLD

RRC or API #

C-133#

VOLUME OF MATERIAL [] BBLs. : 12 YARD : []

AS A CONDITION TO SUNDANCE SERVICES, INC.'S ACCEPTANCE OF THE MATERIALS SHIPPED WITH THIS JOB TICKET, OPERATOR/SHIPPER REPRESENTS AND WARRANTS THAT THE WASTE MATERIAL SHIPPED HEREWITH IS MATERIAL EXEMPT FROM THE RESOURCE, CONSERVATION AND RECOVERY ACT OF 1976, AS AMENDED FROM TIME TO TIME, 40 U.S.C. § 6901, et seq., THE NM HEALTH AND SAF. CODE § 361.001 et seq., AND REGULATIONS RELATED THERETO, BY VIRTUE OF THE EXEMPTION AFFORDED DRILLING FLUIDS, PRODUCED WATERS, AND OTHER WASTE ASSOCIATED WITH THE EXPLORATION, DEVELOPMENT OR PRODUCTION OF CRUDE OIL OR NATURAL GAS OR GEOTHERMAL ENERGY.

ALSO AS A CONDITION TO SUNDANCE SERVICES, INC.'S ACCEPTANCE OF THE MATERIALS SHIPPED WITH THIS JOB TICKET, TRANSPORTER REPRESENTS AND WARRANTS THAT ONLY THE MATERIAL DELIVERED BY OPERATOR/SHIPPER TO TRANSPORTER IS NOW DELIVERED BY TRANSPORTER TO SUNDANCE SERVICES, INC.'S FACILITY FOR DISPOSAL.

THIS WILL CERTIFY that the above Transporter loaded the material represented by this Transporter Statement at the above described location, and that it was tendered by the above described shipper. This will certify that no additional materials were added to this load, and that the material was delivered without incident.

DRIVER:

(SIGNATURE)

FACILITY REPRESENTATIVE:

(SIGNATURE)

White - Sundance

Canary - Sundance Acct #1

Pink - Transporter



SUNDANCE SERVICES, Inc.

P.O. Box 1737 Eunice, New Mexico 88231
(575) 394-2511

TICKET No. 202858

LEASE OPERATOR/SHIPPER/COMPANY: SLUG

LEASE NAME: Line 2C-12"

TRANSPORTER COMPANY: Triple M

DATE: 4-27-12 VEHICLE NO: 13

TIME: 9:30 AM/PM

GENERATOR COMPANY
MAN'S NAME: Paul Taylor

CHARGE TO: SLUG

RIG NAME
AND NUMBER

TYPE OF MATERIAL

- ☐ Production Water ☐ Drilling Fluids ☐ Rinsate
☐ Tank Bottoms ☒ Contaminated Soil ☐ Jet Out
☐ Solids ☐ BS&W Content: ☐ Call Out

Description: OIL

RRC or API #

C-133#

VOLUME OF MATERIAL [] BBLs. : [] YARD : []

AS A CONDITION TO SUNDANCE SERVICES, INC.'S ACCEPTANCE OF THE MATERIALS SHIPPED WITH THIS JOB TICKET, OPERATOR/SHIPPER REPRESENTS AND WARRANTS THAT THE WASTE MATERIAL SHIPPED HEREWITH IS MATERIAL EXEMPT FROM THE RESOURCE, CONSERVATION AND RECOVERY ACT OF 1976, AS AMENDED FROM TIME TO TIME, 40 U.S.C. § 6901, et seq., THE NM HEALTH AND SAF. CODE § 361.001 et seq., AND REGULATIONS RELATED THERETO, BY VIRTUE OF THE EXEMPTION AFFORDED DRILLING FLUIDS, PRODUCED WATERS, AND OTHER WASTE ASSOCIATED WITH THE EXPLORATION, DEVELOPMENT OR PRODUCTION OF CRUDE OIL OR NATURAL GAS OR GEOTHERMAL ENERGY.

ALSO AS A CONDITION TO SUNDANCE SERVICES, INC.'S ACCEPTANCE OF THE MATERIALS SHIPPED WITH THIS JOB TICKET, TRANSPORTER REPRESENTS AND WARRANTS THAT ONLY THE MATERIAL DELIVERED BY OPERATOR/SHIPPER TO TRANSPORTER IS NOW DELIVERED BY TRANSPORTER TO SUNDANCE SERVICES, INC.'S FACILITY FOR DISPOSAL.

THIS WILL CERTIFY that the above Transporter loaded the material represented by this Transporter Statement at the above described location, and that it was tendered by the above described shipper. This will certify that no additional materials were added to this load, and that the material was delivered without incident.

DRIVER: *Thuy Cuellar*
(SIGNATURE)

FACILITY REPRESENTATIVE: *D. Sp. Cruz*
(SIGNATURE)

White - Sundance Canary - Sundance Acct #1 Pink - Transporter



SUNDANCE SERVICES, Inc.

P.O. Box 1737 Eunice, New Mexico 88231
(575) 394-2511

TICKET No. 202939

LEASE OPERATOR/SHIPPER/COMPANY: *SLIG*

LEASE NAME: *Line 30-12"*

TRANSPORTER COMPANY: *Triple M Truck*

DATE: *4-27-12* VEHICLE NO: *13*

TIME *2:05* AM/PM

GENERATOR COMPANY
MAN'S NAME: *OUT 3010*

CHARGE TO: *SLIG*

RIG NAME
AND NUMBER

TYPE OF MATERIAL

- | | | |
|---|---|-----------------------------------|
| <input type="checkbox"/> Production Water | <input type="checkbox"/> Drilling Fluids | <input type="checkbox"/> Rinsate |
| <input type="checkbox"/> Tank Bottoms | <input checked="" type="checkbox"/> Contaminated Soil | <input type="checkbox"/> Jet Out |
| <input type="checkbox"/> Solids | <input type="checkbox"/> BS&W Content: | <input type="checkbox"/> Call Out |

Description: *CID*

RRC or API #

C-133#

VOLUME OF MATERIAL [] BBLs. : *12* YARD : []

AS A CONDITION TO SUNDANCE SERVICES, INC.'S ACCEPTANCE OF THE MATERIALS SHIPPED WITH THIS JOB TICKET, OPERATOR/SHIPPER REPRESENTS AND WARRANTS THAT THE WASTE MATERIAL SHIPPED HEREWITH IS MATERIAL EXEMPT FROM THE RESOURCE, CONSERVATION AND RECOVERY ACT OF 1976, AS AMENDED FROM TIME TO TIME, 40 U.S.C. § 6901, et seq., THE NM HEALTH AND SAF. CODE § 361.001 et seq., AND REGULATIONS RELATED THERETO, BY VIRTUE OF THE EXEMPTION AFFORDED DRILLING FLUIDS, PRODUCED WATERS, AND OTHER WASTE ASSOCIATED WITH THE EXPLORATION, DEVELOPMENT OR PRODUCTION OF CRUDE OIL OR NATURAL GAS OR GEOTHERMAL ENERGY.

ALSO AS A CONDITION TO SUNDANCE SERVICES, INC.'S ACCEPTANCE OF THE MATERIALS SHIPPED WITH THIS JOB TICKET, TRANSPORTER REPRESENTS AND WARRANTS THAT ONLY THE MATERIAL DELIVERED BY OPERATOR/SHIPPER TO TRANSPORTER IS NOW DELIVERED BY TRANSPORTER TO SUNDANCE SERVICES, INC.'S FACILITY FOR DISPOSAL.

THIS WILL CERTIFY that the above Transporter loaded the material represented by this Transporter Statement at the above described location, and that it was tendered by the above described shipper. This will certify that no additional materials were added to this load, and that the material was delivered without incident.

DRIVER:

(SIGNATURE)

FACILITY REPRESENTATIVE:

(SIGNATURE)

White - Sundance

Canary - Sundance Acct #1

Pink - Transporter



SUNDANCE SERVICES, Inc.

P.O. Box 1737 Eunice, New Mexico 88231
(575) 394-2511

TICKET No. 202913

LEASE OPERATOR/SHIPPER/COMPANY: <u>SILG</u>	
LEASE NAME: <u>Line 26-12</u>	TIME: <u>12:43</u> AM/PM
TRANSPORTER COMPANY: <u>Triple H Truck</u>	GENERATOR COMPANY MAN'S NAME: <u>Cut Stanley</u>
DATE: <u>4-27-12</u>	VEHICLE NO: <u>06</u>
CHARGE TO: <u>SILG</u>	RIG NAME AND NUMBER

TYPE OF MATERIAL

- | | | |
|---|---|-----------------------------------|
| <input type="checkbox"/> Production Water | <input type="checkbox"/> Drilling Fluids | <input type="checkbox"/> Rinsate |
| <input type="checkbox"/> Tank Bottoms | <input checked="" type="checkbox"/> Contaminated Soil | <input type="checkbox"/> Jet Out |
| <input type="checkbox"/> Solids | <input type="checkbox"/> BS&W Content: | <input type="checkbox"/> Call Out |

OLD

Description:

RRC or API #

C-133#

VOLUME OF MATERIAL [] BBLs. : 12 YARD : []

AS A CONDITION TO SUNDANCE SERVICES, INC.'S ACCEPTANCE OF THE MATERIALS SHIPPED WITH THIS JOB TICKET, OPERATOR/SHIPPER REPRESENTS AND WARRANTS THAT THE WASTE MATERIAL SHIPPED HEREWITH IS MATERIAL EXEMPT FROM THE RESOURCE, CONSERVATION AND RECOVERY ACT OF 1976, AS AMENDED FROM TIME TO TIME, 40 U.S.C. § 6901, et seq., THE NM HEALTH AND SAF. CODE § 361.001 et seq., AND REGULATIONS RELATED THERETO, BY VIRTUE OF THE EXEMPTION AFFORDED DRILLING FLUIDS, PRODUCED WATERS, AND OTHER WASTE ASSOCIATED WITH THE EXPLORATION, DEVELOPMENT OR PRODUCTION OF CRUDE OIL OR NATURAL GAS OR GEOTHERMAL ENERGY.

ALSO AS A CONDITION TO SUNDANCE SERVICES, INC.'S ACCEPTANCE OF THE MATERIALS SHIPPED WITH THIS JOB TICKET. TRANSPORTER REPRESENTS AND WARRANTS THAT ONLY THE MATERIAL DELIVERED BY OPERATOR/SHIPPER TO TRANSPORTER IS NOW DELIVERED BY TRANSPORTER TO SUNDANCE SERVICES, INC.'S FACILITY FOR DISPOSAL.

THIS WILL CERTIFY that the above Transporter loaded the material represented by this Transporter Statement at the above described location, and that it was tendered by the above described shipper. This will certify that no additional materials were added to this load, and that the material was delivered without incident.

DRIVER: ERNESTO TORRES (SIGNATURE)

FACILITY REPRESENTATIVE: A. Sh. Cruz (SIGNATURE)

White - Sundance Canary - Sundance Acct #1 Pink - Transporter



SUNDANCE SERVICES, Inc.

P.O. Box 1737 Eunice, New Mexico 88231
(575) 394-2511

TICKET No. 202882

LEASE OPERATOR/SHIPPER/COMPANY: SUG

LEASE NAME: Line 20-12"

TRANSPORTER COMPANY: Triple A Truck

TIME 16:58 AM/PM

DATE: 4-27-12 VEHICLE NO: 06

GENERATOR COMPANY
MAN'S NAME: Curt Stanley

CHARGE TO: SUG

RIG NAME
AND NUMBER

TYPE OF MATERIAL

- ☐ Production Water ☐ Drilling Fluids ☐ Rinsate
☐ Tank Bottoms ☒ Contaminated Soil ☐ Jet Out
☐ Solids ☐ BS&W Content: ☐ Call Out

Description: CLD

RRC or API #

C-133#

VOLUME OF MATERIAL ☐ BBLs. : 12 YARD : ☐

AS A CONDITION TO SUNDANCE SERVICES, INC.'S ACCEPTANCE OF THE MATERIALS SHIPPED WITH THIS JOB TICKET, OPERATOR/SHIPPER REPRESENTS AND WARRANTS THAT THE WASTE MATERIAL SHIPPED HEREWITH IS MATERIAL EXEMPT FROM THE RESOURCE, CONSERVATION AND RECOVERY ACT OF 1976, AS AMENDED FROM TIME TO TIME, 40 U.S.C. § 6901, et seq., THE NM HEALTH AND SAF. CODE § 361.001 et seq., AND REGULATIONS RELATED THERETO, BY VIRTUE OF THE EXEMPTION AFFORDED DRILLING FLUIDS, PRODUCED WATERS, AND OTHER WASTE ASSOCIATED WITH THE EXPLORATION, DEVELOPMENT OR PRODUCTION OF CRUDE OIL OR NATURAL GAS OR GEOTHERMAL ENERGY.

ALSO AS A CONDITION TO SUNDANCE SERVICES, INC.'S ACCEPTANCE OF THE MATERIALS SHIPPED WITH THIS JOB TICKET, TRANSPORTER REPRESENTS AND WARRANTS THAT ONLY THE MATERIAL DELIVERED BY OPERATOR/SHIPPER TO TRANSPORTER IS NOW DELIVERED BY TRANSPORTER TO SUNDANCE SERVICES, INC.'S FACILITY FOR DISPOSAL.

THIS WILL CERTIFY that the above Transporter loaded the material represented by this Transporter Statement at the above described location, and that it was tendered by the above described shipper. This will certify that no additional materials were added to this load, and that the material was delivered without incident.

DRIVER:

(SIGNATURE)

FACILITY REPRESENTATIVE:

(SIGNATURE)

White - Sundance

Canary - Sundance Acct #1

Pink - Transporter



SUNDANCE SERVICES, Inc.

P.O. Box 1737 Eunice, New Mexico 88231
(575) 394-2511

TICKET No. 202856

LEASE OPERATOR/SHIPPER/COMPANY: SUG

LEASE NAME: Line 20-12

TRANSPORTER COMPANY: TAJTE M

DATE: 1-27-12 VEHICLE NO: 06

TIME AM/PM

GENERATOR COMPANY
MAN'S NAME

RIG NAME
AND NUMBER

CHARGE TO: SUG

TYPE OF MATERIAL

- ☐ Production Water ☐ Drilling Fluids ☐ Rinsate
☐ Tank Bottoms ☒ Contaminated Soil ☐ Jet Out
☐ Solids ☐ BS&W Content: ☐ Call Out

Description: OLD

RRC or API #

C-133#

VOLUME OF MATERIAL [] BBLs. : 4 YARD : []

AS A CONDITION TO SUNDANCE SERVICES, INC.'S ACCEPTANCE OF THE MATERIALS SHIPPED WITH THIS JOB TICKET, OPERATOR/SHIPPER REPRESENTS AND WARRANTS THAT THE WASTE MATERIAL SHIPPED HEREWITH IS MATERIAL EXEMPT FROM THE RESOURCE, CONSERVATION AND RECOVERY ACT OF 1976, AS AMENDED FROM TIME TO TIME, 40 U.S.C. § 6901, et seq., THE NM HEALTH AND SAF. CODE § 361.001 et seq., AND REGULATIONS RELATED THERETO, BY VIRTUE OF THE EXEMPTION AFFORDED DRILLING FLUIDS, PRODUCED WATERS, AND OTHER WASTE ASSOCIATED WITH THE EXPLORATION, DEVELOPMENT OR PRODUCTION OF CRUDE OIL OR NATURAL GAS OR GEOTHERMAL ENERGY.

ALSO AS A CONDITION TO SUNDANCE SERVICES, INC.'S ACCEPTANCE OF THE MATERIALS SHIPPED WITH THIS JOB TICKET, TRANSPORTER REPRESENTS AND WARRANTS THAT ONLY THE MATERIAL DELIVERED BY OPERATOR/SHIPPER TO TRANSPORTER IS NOW DELIVERED BY TRANSPORTER TO SUNDANCE SERVICES, INC.'S FACILITY FOR DISPOSAL.

THIS WILL CERTIFY that the above Transporter loaded the material represented by this Transporter Statement at the above described location, and that it was tendered by the above described shipper. This will certify that no additional materials were added to this load, and that the material was delivered without incident.

DRIVER: Fernando Torres
(SIGNATURE)

FACILITY REPRESENTATIVE: J. Sha Cruz
(SIGNATURE)

White - Sundance

Canary - Sundance Acct #1

Pink - Transporter



SUNDANCE SERVICES, Inc.

P.O. Box 1737 Eunice, New Mexico 88231
(575) 394-2511

TICKET No. 202721

LEASE OPERATOR/SHIPPER/COMPANY: SUG

LEASE NAME: Line 2C-12H

TRANSPORTER COMPANY: Triple M Truck

DATE: 4-26-12 VEHICLE NO: 01

TIME 9:28 AM/PM

GENERATOR COMPANY
MAN'S NAME: Carl Stenberg

CHARGE TO: SUG

RIG NAME
AND NUMBER

TYPE OF MATERIAL

- ☐ Production Water ☐ Drilling Fluids ☐ Rinsate
☐ Tank Bottoms ☒ Contaminated Soil ☐ Jet Out
☐ Solids ☐ BS&W Content: ☐ Call Out

Description: old

RRC or API #

C-133#

VOLUME OF MATERIAL ☐ BBLs. ☒ YARD 12 : ☐

AS A CONDITION TO SUNDANCE SERVICES, INC.'S ACCEPTANCE OF THE MATERIALS SHIPPED WITH THIS JOB TICKET, OPERATOR/SHIPPER REPRESENTS AND WARRANTS THAT THE WASTE MATERIAL SHIPPED HERewith IS MATERIAL EXEMPT FROM THE RESOURCE, CONSERVATION AND RECOVERY ACT OF 1976, AS AMENDED FROM TIME TO TIME, 40 U.S.C. § 6901, et seq., THE NM HEALTH AND SAF. CODE § 361.001 et seq., AND REGULATIONS RELATED THERETO, BY VIRTUE OF THE EXEMPTION AFFORDED DRILLING FLUIDS, PRODUCED WATERS, AND OTHER WASTE ASSOCIATED WITH THE EXPLORATION, DEVELOPMENT OR PRODUCTION OF CRUDE OIL OR NATURAL GAS OR GEOTHERMAL ENERGY.

ALSO AS A CONDITION TO SUNDANCE SERVICES, INC.'S ACCEPTANCE OF THE MATERIALS SHIPPED WITH THIS JOB TICKET, TRANSPORTER REPRESENTS AND WARRANTS THAT ONLY THE MATERIAL DELIVERED BY OPERATOR/SHIPPER TO TRANSPORTER IS NOW DELIVERED BY TRANSPORTER TO SUNDANCE SERVICES, INC.'S FACILITY FOR DISPOSAL.

THIS WILL CERTIFY that the above Transporter loaded the material represented by this Transporter Statement at the above described location, and that it was tendered by the above described shipper. This will certify that no additional materials were added to this load, and that the material was delivered without incident.

DRIVER:

(SIGNATURE)

FACILITY REPRESENTATIVE:

(SIGNATURE)

White - Sundance

Canary - Sundance Acct #1

Pink - Transporter



SUNDANCE SERVICES, Inc.

P.O. Box 1737 Eunice, New Mexico 88231
(575) 394-2511

TICKET No. 202741

LEASE OPERATOR/SHIPPER/COMPANY: SUG

LEASE NAME: Line 20-12"

TRANSPORTER COMPANY: Triple M Truck

DATE: 4-26-12 VEHICLE NO: 01

TIME 10:50 AM/PM

GENERATOR COMPANY
MAN'S NAME: Carlos Soto

CHARGE TO: SUG

RIG NAME
AND NUMBER

TYPE OF MATERIAL

- ☐ Production Water ☐ Drilling Fluids ☐ Rinsate
☐ Tank Bottoms ☒ Contaminated Soil ☐ Jet Out
☐ Solids ☐ BS&W Content: ☐ Call Out

Description: OP

RRC or API #

C-133#

VOLUME OF MATERIAL ☐ BBLs. ☒ YARD 12 : ☐

AS A CONDITION TO SUNDANCE SERVICES, INC.'S ACCEPTANCE OF THE MATERIALS SHIPPED WITH THIS JOB TICKET, OPERATOR/SHIPPER REPRESENTS AND WARRANTS THAT THE WASTE MATERIAL SHIPPED HEREWITH IS MATERIAL EXEMPT FROM THE RESOURCE, CONSERVATION AND RECOVERY ACT OF 1976, AS AMENDED FROM TIME TO TIME, 40 U.S.C. § 6901, et seq., THE NM HEALTH AND SAF. CODE § 361.001 et seq., AND REGULATIONS RELATED THERETO, BY VIRTUE OF THE EXEMPTION AFFORDED DRILLING FLUIDS, PRODUCED WATERS, AND OTHER WASTE ASSOCIATED WITH THE EXPLORATION, DEVELOPMENT OR PRODUCTION OF CRUDE OIL OR NATURAL GAS OR GEOTHERMAL ENERGY.

ALSO AS A CONDITION TO SUNDANCE SERVICES, INC.'S ACCEPTANCE OF THE MATERIALS SHIPPED WITH THIS JOB TICKET, TRANSPORTER REPRESENTS AND WARRANTS THAT ONLY THE MATERIAL DELIVERED BY OPERATOR/SHIPPER TO TRANSPORTER IS NOW DELIVERED BY TRANSPORTER TO SUNDANCE SERVICES, INC.'S FACILITY FOR DISPOSAL.

THIS WILL CERTIFY that the above Transporter loaded the material represented by this Transporter Statement at the above described location, and that it was tendered by the above described shipper. This will certify that no additional materials were added to this load, and that the material was delivered without incident.

DRIVER:

(SIGNATURE)

FACILITY REPRESENTATIVE:

(SIGNATURE)

White - Sundance

Canary - Sundance Acct #1

Pink - Transporter



SUNDANCE SERVICES, Inc.

P.O. Box 1737 Eunice, New Mexico 88231
(575) 394-2511

TICKET No. 202756

LEASE OPERATOR/SHIPPER/COMPANY: SLIG

LEASE NAME: Time 20-12"

TRANSPORTER COMPANY: Triple M Truck

TIME 12:25 AM/PM

DATE: 4-21-12 VEHICLE NO: 01

GENERATOR COMPANY
MAN'S NAME: Curtis Stankin

CHARGE TO: SLIG

RIG NAME
AND NUMBER

TYPE OF MATERIAL

- ☐ Production Water ☐ Drilling Fluids ☐ Rinsate
☐ Tank Bottoms ☒ Contaminated Soil ☐ Jet Out
☐ Solids ☐ BS&W Content: ☐ Call Out

Description: O/D

RRC or API #

C-133#

VOLUME OF MATERIAL [] BBLs.

[] YARD 12

[]

AS A CONDITION TO SUNDANCE SERVICES, INC.'S ACCEPTANCE OF THE MATERIALS SHIPPED WITH THIS JOB TICKET, OPERATOR/SHIPPER REPRESENTS AND WARRANTS THAT THE WASTE MATERIAL SHIPPED HEREWITH IS MATERIAL EXEMPT FROM THE RESOURCE, CONSERVATION AND RECOVERY ACT OF 1976, AS AMENDED FROM TIME TO TIME, 40 U.S.C. § 6901, et seq., THE NM HEALTH AND SAFETY CODE § 361.001 et seq., AND REGULATIONS RELATED THERETO, BY VIRTUE OF THE EXEMPTION AFFORDED DRILLING FLUIDS, PRODUCED WATERS, AND OTHER WASTE ASSOCIATED WITH THE EXPLORATION, DEVELOPMENT OR PRODUCTION OF CRUDE OIL OR NATURAL GAS OR GEOTHERMAL ENERGY.

ALSO AS A CONDITION TO SUNDANCE SERVICES, INC.'S ACCEPTANCE OF THE MATERIALS SHIPPED WITH THIS JOB TICKET, TRANSPORTER REPRESENTS AND WARRANTS THAT ONLY THE MATERIAL DELIVERED BY OPERATOR/SHIPPER TO TRANSPORTER IS NOW DELIVERED BY TRANSPORTER TO SUNDANCE SERVICES, INC.'S FACILITY FOR DISPOSAL.

THIS WILL CERTIFY that the above Transporter loaded the material represented by this Transporter Statement at the above described location, and that it was tendered by the above described shipper. This will certify that no additional materials were added to this load, and that the material was delivered without incident.

DRIVER:

(SIGNATURE)

FACILITY REPRESENTATIVE:

(SIGNATURE)

White - Sundance

Canary - Sundance Acct #1

Pink - Transporter



SUNDANCE SERVICES, Inc.

P.O. Box 1737 Eunice, New Mexico 88231
(575) 394-2511

TICKET No. 202778

LEASE OPERATOR/SHIPPER/COMPANY: SUG

LEASE NAME: Line 2C-121

TRANSPORTER COMPANY: Triple A Truck

TIME 2:01 AM/PM

DATE: 4-26-12 VEHICLE NO: 01

GENERATOR COMPANY
MAN'S NAME: Paul Skiller

CHARGE TO: SUG

RIG NAME
AND NUMBER

TYPE OF MATERIAL

- ☐ Production Water ☐ Drilling Fluids ☐ Rinsate
☐ Tank Bottoms ☒ Contaminated Soil ☐ Jet Out
☐ Solids ☐ BS&W Content: ☐ Call Out

Description: CLD

RRC or API #

C-133#

VOLUME OF MATERIAL ☐ BBLS. 12 : ☐ YARD 12 : ☐

AS A CONDITION TO SUNDANCE SERVICES, INC.'S ACCEPTANCE OF THE MATERIALS SHIPPED WITH THIS JOB TICKET, OPERATOR/SHIPPER REPRESENTS AND WARRANTS THAT THE WASTE MATERIAL SHIPPED HEREWITH IS MATERIAL EXEMPT FROM THE RESOURCE, CONSERVATION AND RECOVERY ACT OF 1976, AS AMENDED FROM TIME TO TIME, 40 U.S.C. § 6901, et seq., THE NM HEALTH AND SAF. CODE § 361.001 et seq., AND REGULATIONS RELATED THERETO, BY VIRTUE OF THE EXEMPTION AFFORDED DRILLING FLUIDS, PRODUCED WATERS, AND OTHER WASTE ASSOCIATED WITH THE EXPLORATION, DEVELOPMENT OR PRODUCTION OF CRUDE OIL OR NATURAL GAS OR GEOTHERMAL ENERGY.

ALSO AS A CONDITION TO SUNDANCE SERVICES, INC.'S ACCEPTANCE OF THE MATERIALS SHIPPED WITH THIS JOB TICKET, TRANSPORTER REPRESENTS AND WARRANTS THAT ONLY THE MATERIAL DELIVERED BY OPERATOR/SHIPPER TO TRANSPORTER IS NOW DELIVERED BY TRANSPORTER TO SUNDANCE SERVICES, INC.'S FACILITY FOR DISPOSAL.

THIS WILL CERTIFY that the above Transporter loaded the material represented by this Transporter Statement at the above described location, and that it was tendered by the above described shipper. This will certify that no additional materials were added to this load, and that the material was delivered without incident.

DRIVER:

(SIGNATURE)

FACILITY REPRESENTATIVE:

(SIGNATURE)

White - Sundance

Canary - Sundance Acct #1

Pink - Transporter



SUNDANCE SERVICES, Inc.

P.O. Box 1737 Eunice, New Mexico 88231
(575) 394-2511

TICKET No.

202796

LEASE OPERATOR/SHIPPER/COMPANY:

SUG

LEASE NAME:

Line 20-12"

TRANSPORTER COMPANY:

Triple H Truck

TIME AM/PM

DATE:

4-26-12

VEHICLE NO:

11

CHARGE TO:

SUG

RIG NAME
AND NUMBER

TYPE OF MATERIAL

- ☐ Production Water ☐ Drilling Fluids ☐ Rinsate
☐ Tank Bottoms ☐ Contaminated Soil ☐ Jet Out
☐ Solids ☐ BS&W Content: ☐ Call Out

Description:

RRC or API #

C-133#

VOLUME OF MATERIAL ☐ BBLs.

:

☒ YARD

:

☐

AS A CONDITION TO SUNDANCE SERVICES, INC.'S ACCEPTANCE OF THE MATERIALS SHIPPED WITH THIS JOB TICKET, OPERATOR/SHIPPER REPRESENTS AND WARRANTS THAT THE WASTE MATERIAL SHIPPED HEREWITH IS MATERIAL EXEMPT FROM THE RESOURCE, CONSERVATION AND RECOVERY ACT OF 1976, AS AMENDED FROM TIME TO TIME, 40 U.S.C. § 6901, et seq., THE NM HEALTH AND SAF. CODE § 361.001 et seq., AND REGULATIONS RELATED THERETO, BY VIRTUE OF THE EXEMPTION AFFORDED DRILLING FLUIDS, PRODUCED WATERS, AND OTHER WASTE ASSOCIATED WITH THE EXPLORATION, DEVELOPMENT OR PRODUCTION OF CRUDE OIL OR NATURAL GAS OR GEOTHERMAL ENERGY.

ALSO AS A CONDITION TO SUNDANCE SERVICES, INC.'S ACCEPTANCE OF THE MATERIALS SHIPPED WITH THIS JOB TICKET, TRANSPORTER REPRESENTS AND WARRANTS THAT ONLY THE MATERIAL DELIVERED BY OPERATOR/SHIPPER TO TRANSPORTER IS NOW DELIVERED BY TRANSPORTER TO SUNDANCE SERVICES, INC.'S FACILITY FOR DISPOSAL.

THIS WILL CERTIFY that the above Transporter loaded the material represented by this Transporter Statement at the above described location, and that it was tendered by the above described shipper. This will certify that no additional materials were added to this load, and that the material was delivered without incident.

DRIVER:

(SIGNATURE)

FACILITY REPRESENTATIVE:

(SIGNATURE)

White - Sundance

Canary - Sundance Acct #1

Pink - Transporter



SUNDANCE SERVICES, Inc.

P.O. Box 1737 Eunice, New Mexico 88231
(575) 394-2511

TICKET No.

202722

LEASE OPERATOR/SHIPPER/COMPANY: SUG

LEASE NAME: Line 20-12

TRANSPORTER COMPANY: Triple M Trucking

TIME 9:30 AM/PM

DATE: 11-26-12 VEHICLE NO: 13

GENERATOR COMPANY
MAN'S NAME

CHARGE TO: SUG

RIG NAME
AND NUMBER

TYPE OF MATERIAL

- ☐ Production Water ☐ Drilling Fluids ☐ Rinsate
☐ Tank Bottoms ☐ Contaminated Soil ☐ Jet Out
☐ Solids ☐ BS&W Content: ☐ Call Out

Description: CLD

RRC or API #

C-133#

VOLUME OF MATERIAL ☐ BBLs. ☒ YARD 12 : ☐

AS A CONDITION TO SUNDANCE SERVICES, INC.'S ACCEPTANCE OF THE MATERIALS SHIPPED WITH THIS JOB TICKET, OPERATOR/SHIPPER REPRESENTS AND WARRANTS THAT THE WASTE MATERIAL SHIPPED HERewith IS MATERIAL EXEMPT FROM THE RESOURCE, CONSERVATION AND RECOVERY ACT OF 1976, AS AMENDED FROM TIME TO TIME, 40 U.S.C. § 6901, et seq., THE NM HEALTH AND SAF. CODE § 361.001 et seq., AND REGULATIONS RELATED THERETO, BY VIRTUE OF THE EXEMPTION AFFORDED DRILLING FLUIDS, PRODUCED WATERS, AND OTHER WASTE ASSOCIATED WITH THE EXPLORATION, DEVELOPMENT OR PRODUCTION OF CRUDE OIL OR NATURAL GAS OR GEOTHERMAL ENERGY.

ALSO AS A CONDITION TO SUNDANCE SERVICES, INC.'S ACCEPTANCE OF THE MATERIALS SHIPPED WITH THIS JOB TICKET, TRANSPORTER REPRESENTS AND WARRANTS THAT ONLY THE MATERIAL DELIVERED BY OPERATOR/SHIPPER TO TRANSPORTER IS NOW DELIVERED BY TRANSPORTER TO SUNDANCE SERVICES, INC.'S FACILITY FOR DISPOSAL.

THIS WILL CERTIFY that the above Transporter loaded the material represented by this Transporter Statement at the above described location, and that it was tendered by the above described shipper. This will certify that no additional materials were added to this load, and that the material was delivered without incident.

DRIVER:

(SIGNATURE)

FACILITY REPRESENTATIVE:

(SIGNATURE)

White - Sundance

Canary - Sundance Acct #1

Pink - Transporter



SUNDANCE SERVICES, Inc.

P.O. Box 1737 Eunice, New Mexico 88231
(575) 394-2511

TICKET No. 202779

LEASE OPERATOR/SHIPPER/COMPANY: SUG

LEASE NAME: Line 20-12"

TRANSPORTER COMPANY: Triple M Truck

DATE: 4-26-12 VEHICLE NO: 13

TIME 2:02 AM/PM

GENERATOR COMPANY
MAN'S NAME: Chet Stanton

RIG NAME
AND NUMBER

CHARGE TO: SUG

TYPE OF MATERIAL

- ☐ Production Water ☐ Drilling Fluids ☐ Rinsate
☐ Tank Bottoms ☒ Contaminated Soil ☐ Jet Out
☐ Solids ☐ BS&W Content: ☐ Call Out

Description: old

RRC or API #

C-133#

VOLUME OF MATERIAL [] BBLs. : 12 YARD : []

AS A CONDITION TO SUNDANCE SERVICES, INC.'S ACCEPTANCE OF THE MATERIALS SHIPPED WITH THIS JOB TICKET, OPERATOR/SHIPPER REPRESENTS AND WARRANTS THAT THE WASTE MATERIAL SHIPPED HEREWITH IS MATERIAL EXEMPT FROM THE RESOURCE, CONSERVATION AND RECOVERY ACT OF 1976, AS AMENDED FROM TIME TO TIME, 40 U.S.C. § 6901, et seq., THE NM HEALTH AND SAF. CODE § 361.001 et seq., AND REGULATIONS RELATED THERETO, BY VIRTUE OF THE EXEMPTION AFFORDED DRILLING FLUIDS, PRODUCED WATERS, AND OTHER WASTE ASSOCIATED WITH THE EXPLORATION, DEVELOPMENT OR PRODUCTION OF CRUDE OIL OR NATURAL GAS OR GEOTHERMAL ENERGY.

ALSO AS A CONDITION TO SUNDANCE SERVICES, INC.'S ACCEPTANCE OF THE MATERIALS SHIPPED WITH THIS JOB TICKET, TRANSPORTER REPRESENTS AND WARRANTS THAT ONLY THE MATERIAL DELIVERED BY OPERATOR/SHIPPER TO TRANSPORTER IS NOW DELIVERED BY TRANSPORTER TO SUNDANCE SERVICES, INC.'S FACILITY FOR DISPOSAL.

THIS WILL CERTIFY that the above Transporter loaded the material represented by this Transporter Statement at the above described location, and that it was tendered by the above described shipper. This will certify that no additional materials were added to this load, and that the material was delivered without incident.

DRIVER:

(SIGNATURE)

FACILITY REPRESENTATIVE:

(SIGNATURE)

White - Sundance

Canary - Sundance Acct #1

Pink - Transporter



SUNDANCE SERVICES, Inc.

P.O. Box 1737 Eunice, New Mexico 88231
(575) 394-2511

TICKET No. 202758

LEASE OPERATOR/SHIPPER/COMPANY: SUG

LEASE NAME: Line 7C-121

TRANSPORTER COMPANY: Triple M Truck

DATE: 4-26-12 VEHICLE NO: 13

TIME 12:30 AM/PM

GENERATOR COMPANY
MAN'S NAME: Paul Stalder

CHARGE TO: SUG

RIG NAME
AND NUMBER

TYPE OF MATERIAL

- ☐ Production Water ☐ Drilling Fluids ☐ Rinsate
☐ Tank Bottoms ☒ Contaminated Soil ☐ Jet Out
☐ Solids ☐ BS&W Content: ☐ Call Out

Description: old

RRC or API #

C-133#

VOLUME OF MATERIAL ☐ BBLs. ☒ YARD 12 : ☐

AS A CONDITION TO SUNDANCE SERVICES, INC.'S ACCEPTANCE OF THE MATERIALS SHIPPED WITH THIS JOB TICKET, OPERATOR/SHIPPER REPRESENTS AND WARRANTS THAT THE WASTE MATERIAL SHIPPED HERewith IS MATERIAL EXEMPT FROM THE RESOURCE, CONSERVATION AND RECOVERY ACT OF 1976, AS AMENDED FROM TIME TO TIME, 40 U.S.C. § 6901, et seq., THE NM HEALTH AND SAF. CODE § 361.001 et seq., AND REGULATIONS RELATED THERETO, BY VIRTUE OF THE EXEMPTION AFFORDED DRILLING FLUIDS, PRODUCED WATERS, AND OTHER WASTE ASSOCIATED WITH THE EXPLORATION, DEVELOPMENT OR PRODUCTION OF CRUDE OIL OR NATURAL GAS OR GEOTHERMAL ENERGY.

ALSO AS A CONDITION TO SUNDANCE SERVICES, INC.'S ACCEPTANCE OF THE MATERIALS SHIPPED WITH THIS JOB TICKET, TRANSPORTER REPRESENTS AND WARRANTS THAT ONLY THE MATERIAL DELIVERED BY OPERATOR/SHIPPER TO TRANSPORTER IS NOW DELIVERED BY TRANSPORTER TO SUNDANCE SERVICES, INC.'S FACILITY FOR DISPOSAL.

THIS WILL CERTIFY that the above Transporter loaded the material represented by this Transporter Statement at the above described location, and that it was tendered by the above described shipper. This will certify that no additional materials were added to this load, and that the material was delivered without incident.

DRIVER:

(SIGNATURE)

FACILITY REPRESENTATIVE:

(SIGNATURE)

White - Sundance

Canary - Sundance Acct #1

Pink - Transporter



SUNDANCE SERVICES, Inc.

P.O. Box 1737 Eunice, New Mexico 88231
(575) 394-2511

TICKET No. 202797

LEASE OPERATOR/SHIPPER/COMPANY: SILG

LEASE NAME: Line 20-12"

TRANSPORTER COMPANY: Triple M Truck

DATE: 4-26-12 VEHICLE NO: 13

TIME 3:29 AM/PM

GENERATOR COMPANY
MAN'S NAME: Art's Tank

CHARGE TO: SILG

RIG NAME
AND NUMBER

TYPE OF MATERIAL

- ☐ Production Water ☐ Drilling Fluids ☐ Rinsate
☐ Tank Bottoms ☒ Contaminated Soil ☐ Jet Out
☐ Solids ☐ BS&W Content: ☐ Call Out

Description: old

RRC or API #

C-133#

VOLUME OF MATERIAL ☐ BBLs. ☒ YARD 12 : ☐

AS A CONDITION TO SUNDANCE SERVICES, INC.'S ACCEPTANCE OF THE MATERIALS SHIPPED WITH THIS JOB TICKET, OPERATOR/SHIPPER REPRESENTS AND WARRANTS THAT THE WASTE MATERIAL SHIPPED HERewith IS MATERIAL EXEMPT FROM THE RESOURCE, CONSERVATION AND RECOVERY ACT OF 1976, AS AMENDED FROM TIME TO TIME, 40 U.S.C. § 6901, et seq., THE NM HEALTH AND SAF. CODE § 361.001 et seq., AND REGULATIONS RELATED THERETO, BY VIRTUE OF THE EXEMPTION AFFORDED DRILLING FLUIDS, PRODUCED WATERS, AND OTHER WASTE ASSOCIATED WITH THE EXPLORATION, DEVELOPMENT OR PRODUCTION OF CRUDE OIL OR NATURAL GAS OR GEOTHERMAL ENERGY.

ALSO AS A CONDITION TO SUNDANCE SERVICES, INC.'S ACCEPTANCE OF THE MATERIALS SHIPPED WITH THIS JOB TICKET, TRANSPORTER REPRESENTS AND WARRANTS THAT ONLY THE MATERIAL DELIVERED BY OPERATOR/SHIPPER TO TRANSPORTER IS NOW DELIVERED BY TRANSPORTER TO SUNDANCE SERVICES, INC.'S FACILITY FOR DISPOSAL.

THIS WILL CERTIFY that the above Transporter loaded the material represented by this Transporter Statement at the above described location, and that it was tendered by the above described shipper. This will certify that no additional materials were added to this load, and that the material was delivered without incident.

DRIVER: Harvey Cuddey

(SIGNATURE)

FACILITY REPRESENTATIVE: A. Ste Cruz

(SIGNATURE)

White - Sundance

Canary - Sundance Acct #1

Pink - Transporter



SUNDANCE SERVICES, Inc.

P.O. Box 1737 Eunice, New Mexico 88231
(575) 394-2511

TICKET No. 202742

LEASE OPERATOR/SHIPPER/COMPANY: <u>SUG</u>	
LEASE NAME: <u>Line 20-12"</u>	TIME <u>10:54</u> AM/PM
TRANSPORTER COMPANY: <u>Triple M Truck</u>	
DATE: <u>4-26-12</u>	VEHICLE NO: <u>13</u>
GENERATOR COMPANY MAN'S NAME: <u>Curtis Tucker</u>	
CHARGE TO: <u>SUG</u>	RIG NAME AND NUMBER

TYPE OF MATERIAL

- | | | |
|---|---|-----------------------------------|
| <input type="checkbox"/> Production Water | <input type="checkbox"/> Drilling Fluids | <input type="checkbox"/> Rinsate |
| <input type="checkbox"/> Tank Bottoms | <input checked="" type="checkbox"/> Contaminated Soil | <input type="checkbox"/> Jet Out |
| <input type="checkbox"/> Solids | <input type="checkbox"/> BS&W Content: | <input type="checkbox"/> Call Out |

Description: old

RRC or API #

C-133#

VOLUME OF MATERIAL [] BBLs. : 12 YARD : []

AS A CONDITION TO SUNDANCE SERVICES, INC.'S ACCEPTANCE OF THE MATERIALS SHIPPED WITH THIS JOB TICKET, OPERATOR/SHIPPER REPRESENTS AND WARRANTS THAT THE WASTE MATERIAL SHIPPED HERewith IS MATERIAL EXEMPT FROM THE RESOURCE, CONSERVATION AND RECOVERY ACT OF 1976, AS AMENDED FROM TIME TO TIME, 40 U.S.C. § 6901, et seq., THE NM HEALTH AND SAF. CODE § 361.001 et seq., AND REGULATIONS RELATED THERETO, BY VIRTUE OF THE EXEMPTION AFFORDED DRILLING FLUIDS, PRODUCED WATERS, AND OTHER WASTE ASSOCIATED WITH THE EXPLORATION, DEVELOPMENT OR PRODUCTION OF CRUDE OIL OR NATURAL GAS OR GEOTHERMAL ENERGY.

ALSO AS A CONDITION TO SUNDANCE SERVICES, INC.'S ACCEPTANCE OF THE MATERIALS SHIPPED WITH THIS JOB TICKET, TRANSPORTER REPRESENTS AND WARRANTS THAT ONLY THE MATERIAL DELIVERED BY OPERATOR/SHIPPER TO TRANSPORTER IS NOW DELIVERED BY TRANSPORTER TO SUNDANCE SERVICES, INC.'S FACILITY FOR DISPOSAL.

THIS WILL CERTIFY that the above Transporter loaded the material represented by this Transporter Statement at the above described location, and that it was tendered by the above described shipper. This will certify that no additional materials were added to this load, and that the material was delivered without incident.

DRIVER:

(SIGNATURE)

FACILITY REPRESENTATIVE:

(SIGNATURE)

White - Sundance

Canary - Sundance Acct #1

Pink - Transporter