

District I
1625 N. French Dr., Hobbs, NM 88240
District II
1301 W. Grand Avenue, Artesia, NM 88210
District III
1000 Rio Brazos Road, Aztec, NM 87410
District IV
1220 S. St. Francis Dr., Santa Fe, NM 87505

State of New Mexico
Energy Minerals and Natural Resources

Oil Conservation Division
1220 South St. Francis Dr.
Santa Fe, NM 87505

Form C-141
Revised October 10, 2003

Submit 2 Copies to appropriate
District Office in accordance
with Rule 116 on back
side of form

Release Notification and Corrective Action

OPERATOR

Initial Report

☒ Final Report

Name of Company	Fasken Oil & Ranch, Ltd.	Contact	Jimmy Carlile
Address	303 W. Wall Ave., Ste. 1800 Midland, TX 79701-5116	Telephone No.	(432)687-1777
Facility Name	Denton SWD Historical Site #3	Facility Type	Salt Water Disposal
Surface Owner	Darr Angell	Mineral Owner	Private
		Lease No.	

LOCATION OF RELEASE

API #

30-025-05283
30-025-23621-00-00

Unit Letter	Section	Township	Range	Feet from the	North/South Line	Feet from the	East/West Line	County
J	11	15S	37E					Eddy

Latitude 33.0298° North

Longitude 103.1688° West

NATURE OF RELEASE

Type of Release	Produced water	Volume of Release	Unknown	Volume Recovered	Unknown
Source of Release	SWD Trunk Line	Date and Hour of Occurrence	Unknown	Date and Hour of Discovery	Unknown
Was Immediate Notice Given?	Yes No <input checked="" type="checkbox"/> Not Required	If YES, To Whom?			
By Whom?	Date and Hour 7/31/2009, Time unknown				
Was a Watercourse Reached?	<input type="checkbox"/> Yes <input checked="" type="checkbox"/> No	If YES, Volume Impacting the Watercourse.			
If a Watercourse was Impacted, Describe Fully.*					

Describe Cause of Problem and Remedial Action Taken:

In July 2009, Fasken discovered a historical release along the Denton Salt Water Disposal (SWD) flowline. The release was attributed to failure of a section of an old steel flowline, which had been replaced with a fiberglass line several years prior to the discovery of the release. Failure of the steel flowline resulted in the release of an unknown volume of produced water. Following vertical delineation, the historical release was reported to the NMOCD Hobbs District Office on July 31, 2009, in a remediation plan entitled *Proposed Cleanup of Historical Salt Water Spill Sites*.

Describe Area Affected and Cleanup Action Taken.

The release affected areas of pastureland measuring approximately 145' x 25' and 105' x 30', as well as an oil lease access road. The release was remediated as per NMOCD approval. Please reference the attached *Remediation Summary & Risk-Based Site Closure Request* for remediation details.

I hereby certify that the information given above is true and complete to the best of my knowledge and understand that pursuant to NMOCD rules and regulations all operators are required to report and/or file certain release notifications and perform corrective actions for releases, which may endanger public health or the environment. The acceptance of a C-141 report by the NMOCD marked as "Final Report" does not relieve the operator of liability should their operations have failed to adequately investigate and remediate contamination that pose a threat to ground water, surface water, human health or the environment. In addition, NMOCD acceptance of a C-141 report does not relieve the operator of responsibility for compliance with any other federal, state, or local laws and/or regulations.

Signature:	OIL CONSERVATION DIVISION		
Printed Name: Ben J. Arguijo (Agent on behalf of Fasken O&R, Ltd)	Approved by ENVU SPEC District Supervisor: <i>Jeff Leung</i>		
Title: Project Manager, Basin Environmental	Approval Date: 4/17/12	Expiration Date: -	
E-mail Address: bjarguijo@basinenv.com	Conditions of Approval: REFER TO CAUTION SECT 3.0 SUMMARY OF SOIL REMEDIATION ACTIVITIES		
Date: 4/17/2012	Phone: (575)396-2378	4336 IRP-4-12-2796	

Basin Environmental Service Technologies, LLC

3100 Plains Highway
P. O. Box 301
Lovington, New Mexico 88260
bjarguijo@basinenv.com
Office: (575) 396-2378 Fax: (575) 396-1429



REMEDIATION SUMMARY & RISK-BASED SITE CLOSURE REQUEST

**FASKEN OIL & RANCH, LTD.
DENTON SWD HISTORICAL SITE #3
Lea County, New Mexico
Unit Letter "J" (NWSE), Section 11, Township 15 South, Range 37 East
Latitude 33.0298° North, Longitude 103.1688° West**


Prepared For:

Fasken Oil and Ranch, Ltd.
303 W. Wall Ave., Suite 1800
Midland, TX 79701-5116

Prepared By:

Basin Environmental Service Technologies, LLC
3100 Plains Highway
Lovington, New Mexico 88260

April 2012



Ben J. Arguijo
Project Manager

TABLE OF CONTENTS

1.0 INTRODUCTION & BACKGROUND INFORMATION.....	1
2.0 NMOCD SITE CLASSIFICATION.....	1
3.0 SUMMARY OF SOIL REMEDIATION ACTIVITIES.....	2
4.0 QA/QC PROCEDURES.....	3
4.1 Soil Sampling.....	3
4.2 Decontamination of Equipment.....	4
4.3 Laboratory Protocol.....	4
5.0 SITE CLOSURE REQUEST.....	4
6.0 LIMITATIONS.....	4
7.0 DISTRIBUTION.....	5

FIGURES

Figure 1 – Site Location Map

Figure 2 – Site & Sample Location Map

TABLES

Table 1 – Concentrations of Chloride in Soil

APPENDICES

Appendix A – Photographs

Appendix B – Laboratory Analytical Reports

Appendix C – Soil Disposal Manifests

1.0 INTRODUCTION & BACKGROUND INFORMATION

Basin Environmental Service Technologies, LLC (Basin), on behalf of Fasken Oil & Ranch, Ltd. (Fasken), has prepared this *Remediation Summary & Risk-Based Site Closure Request* for the release site known as Denton SWD Historical Site #3. The legal description of the release site is Unit Letter "J" (NW/SE), Section 11, Township 15 South, Range 37 East, in Lea County, New Mexico. The geographic coordinates of the release site are 33.0298° North latitude and 103.1688° West longitude. The property affected by the release is owned by Mr. Darr Angell. A "Site Location Map" is provided as Figure 1.

In July 2009, Fasken discovered a historical release along the Denton Salt Water Disposal (SWD) flowline. The release was attributed to failure of a section of an old steel flowline, which had been replaced with a fiberglass line several years prior to the discovery of the release. Failure of the steel flowline resulted in the release of an unknown volume of produced water. The historical release was reported to the New Mexico Oil Conservation Division (NMOCD) Hobbs District Office on July 31, 2009. General photographs of the release site are provided as Appendix A.

In July 2009, a previous consultant advanced two (2) soil borings at the release site to delineate the vertical extent of impacted soil.

On July 31, 2009, Fasken submitted a risk-based site closure proposal, *Proposed Cleanup of Historical Salt Water Spill Sites*, to the NMOCD Hobbs District Office, presenting laboratory analytical results from the drilling event and summarizing remedial activities to-date. Based on laboratory analytical results, Fasken requested and received NMOCD approval to remove heavily chloride-impacted soil from above the hard rock layer at the site [approximately three feet (3') below ground surface (bgs)], install an impermeable liner in the floor of the excavation, and backfill the excavation with non-impacted material.

2.0 NMOCD SITE CLASSIFICATION

A search of the New Mexico Water Rights Reporting System (NMWRRS) database maintained by the New Mexico Office of the State Engineer (NMOSE) indicated the depth to water in Section 11, Township 15 South, Range 37 East ranges from approximately thirty-seven feet (37') to sixty-five feet (65') bgs. A depth-to-groundwater reference map utilized by the NMOCD indicates groundwater should be encountered at approximately fifty-five feet (55') bgs at the release site. Based on the NMOCD ranking system, ten (10) points will be assigned to the site as a result of this criterion.

A search of the NMWRRS database indicated there are no water wells within 1,000 feet of the release. Based on the NMOCD ranking system, zero (0) points will be assigned to the site as a result of this criterion.

There are no surface water bodies within 1,000 feet of the release. Based on the NMOCD ranking system, zero (0) points will be assigned to the site as a result of this criterion.

NMOCD guidelines indicate the Denton SWD Historical Site #3 release site has an initial ranking score of ten (10) points. The soil remediation levels for a site with a ranking score of ten (10) points are as follows:

- Benzene – 10 mg/Kg (ppm)
- BTEX – 50 mg/Kg (ppm)
- TPH – 1,000 mg/Kg (ppm)

The New Mexico Administrative Code (NMAC) does not currently specify a remediation level for chloride concentrations in soil. Chloride remediation levels are set by the NMOCD on a site-specific basis.

3.0 SUMMARY OF SOIL REMEDIATION ACTIVITIES

On March 5, 2012, excavation of impacted soil commenced at the site. Hach Quantab Chloride Low Range (30-600 mg/Kg) Titrators were used to field-screen the horizontal extent of impacted soil and to guide the excavation. Due to the presence of an oil lease access road which bisects the release site, to facilitate remediation, the excavation was divided into two sections: Section A and Section B. Excavated soil was stockpiled on-site, pending final disposition.

From March 5 through March 12, 2012, approximately one thousand, seven hundred and forty cubic yards (1,740 yd³) of impacted soil was excavated and transported to Gandy Marley, Inc. (NMOCD Permit # DP-1041), for disposal. A representative sample of soil disposal manifests is included as Appendix C.

On March 5, 2012, seven (7) soil samples (Section A - North Wall #1, Section A - East Wall #1, Section A - East Wall #2, Section A - East Wall #3, Section A - West Wall #1, Section A - West Wall #2, and Section A - West Wall #3) were collected from the sidewalls of Section A, and six (6) soil samples (Section B - North Wall #1, Section B - East Wall #2, Section B - East Wall #3, Section B - West Wall #2, Section B - West Wall #3, and Section B - South Wall #2) were collected from the sidewalls of Section B. The soil samples were submitted to Cardinal Laboratories in Hobbs, New Mexico, for analysis of chloride concentrations using EPA Method 4500 Cl-B. Table 1 summarizes the "Concentrations of Chloride in Soil". Soil sample locations are depicted in Figure 2, "Site & Sample Location Map". Laboratory analytical reports are provided as Appendix B.

Laboratory analytical results indicated chloride concentrations in Section A ranged from 80.0 mg/Kg in soil sample Section A - West Wall #2 to 3,120 mg/Kg in soil sample Section A - East Wall #2. Chloride concentrations in Section B ranged from 112 mg/Kg in soil sample Section B - North Wall #1 to 3,280 mg/Kg in soil sample Section B - West Wall #2. Review of laboratory analytical results indicated the chloride concentrations in soil samples Section A - East Wall #2, Section A - East Wall #3, Section A - West Wall #3, Section B - West Wall #2, Section B - West Wall #3, and Section B - South Wall #2 exceeded the regulatory remediation action level (RRAL) established for the site by the NMOCD.

On March 7, 2012, three (3) soil samples (Section A - East Wall #4, Section A - West Wall #4, and Section A - South Wall #1) were collected from the sidewalls of Section A and submitted to

the laboratory for analysis of chloride concentrations. Laboratory analytical results indicated chloride concentrations ranged from 3,160 mg/Kg in soil sample Section A - South Wall #1 to 3,520 mg/Kg in soil sample Section A - East Wall #4. Review of laboratory analytical results indicated the chloride concentrations in all submitted soil samples exceeded the RRAL established for the site.

On March 9, 2012, one (1) soil sample (Section B - West Wall #1) was collected from the sidewall of Section B and submitted to the laboratory for analysis of chloride concentrations. The chloride concentration was 96.0 mg/Kg. Review of laboratory analytical results indicated the chloride concentration in soil sample Section B - West Wall #1 was less than the RRAL established for the site.

Further excavation in the areas represented by soil samples Section A - East Wall #2, Section A - East Wall #3, Section A - East Wall #4, Section A - West Wall #3, Section A - West Wall #4, Section A - South Wall #1, Section B - West Wall #2, Section B - West Wall #3, and Section B - South Wall #2 was precluded by the presence of active pipelines immediately adjacent to the sample locations and/or an oil lease access road which bisected the release site.

On March 13, 2012, a Basin representative contacted the NMOCD to request permission to backfill the excavations and to leave soil represented by soil samples Section A - East Wall #2, Section A - East Wall #3, Section A - East Wall #4, Section A - West Wall #3, Section A - West Wall #4, Section A - South Wall #1, Section B - West Wall #2, Section B - West Wall #3, and Section B - South Wall #2 in place. The requests were approved by an NMOCD representative on March 14, 2012, with the caveat that soil exhibiting contamination above the RRAL established for the site will be remediated upon decommission or abandonment of the currently active pipelines and/or the oil lease access road.

Based on laboratory analytical results, and with NMOCD approval, from March 14 through March 22, 2012, the excavations were backfilled with approximately nine hundred and three cubic yards (903 yd³) of topsoil purchased from the landowner, compacted, and contoured to fit the surrounding topography. Prior to backfilling, an impermeable clay liner was placed in the floors of the excavations, compacted, and leveled. Final dimensions of Section A were approximately one hundred and forty-five feet (145') in length, approximately twenty-five feet (25') in width, and approximately two and one-half feet (2.5') in depth. Final dimensions of Section B were approximately one hundred and five feet (105') in length, varying in width from approximately thirty feet (30') to approximately seventy feet (70'), and approximately two and one-half feet (2.5') in depth.

The Denton SWD Historical Site #3 release site will be seeded with an NMOCD-approved seed mixture during the 2012 calendar year.

4.0 QA/QC PROCEDURES

4.1 Soil Sampling

Soil Samples were delivered to Cardinal Laboratories in Hobbs, New Mexico, for analysis of chloride concentrations in accordance with EPA Method 4500 Cl-B. Soil samples were analyzed for chloride concentrations within fourteen (14) days following the collection date.

4.2 Decontamination of Equipment

Cleaning of the sampling equipment was the responsibility of the environmental technician. Prior to use, and between each sample, the sampling equipment was cleaned with Liqui-Nox® detergent and rinsed with distilled water.

4.3 Laboratory Protocol

The laboratory was responsible for proper QA/QC procedures after signing the chain-of-custody form(s). These procedures were either transmitted with the laboratory analytical reports or are on file at the laboratory.

5.0 SITE CLOSURE REQUEST

Soil samples collected from the sidewalls of the Denton SWD Historical Site #3 excavation were analyzed by an NMOCD-approved laboratory, and chloride concentrations were below the regulatory remediation action levels established for the site. The activities conducted at the site met the objectives set forth in the *Proposed Cleanup of Historic Salt Water Spill Sites*, dated July 31, 2009. Basin recommends Fasken provide the NMOCD Hobbs District Office a copy of this *Remediation Summary & Risk-Based Site Closure Request* and request the NMOCD grant site closure to the Denton SWD Historical Site #3 release site.

6.0 LIMITATIONS

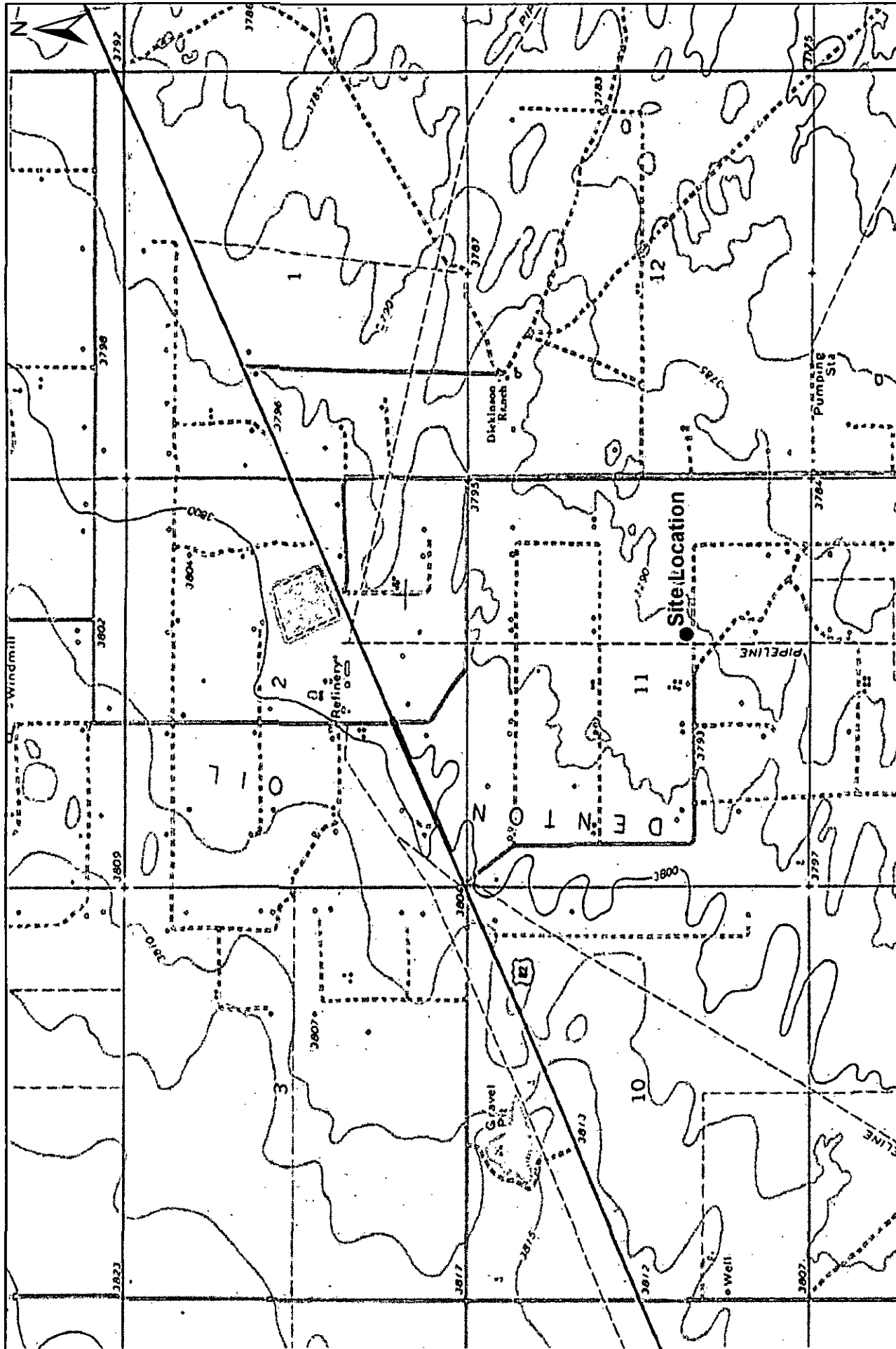
Basin Environmental Service Technologies, LLC, has prepared this *Remediation Summary & Risk-Based Site Closure Request* to the best of its ability. No other warranty, expressed or implied, is made or intended. Basin has examined and relied upon documents referenced in the report and on oral statements made by certain individuals. Basin has not conducted an independent examination of the facts contained in referenced materials and statements. Basin has presumed the genuineness of these documents and statements and that the information provided therein is true and accurate. Basin has prepared this report in a professional manner, using the degree of skill and care exercised by similar environmental consultants. Basin notes that the facts and conditions referenced in this report may change over time, and the conclusions and recommendations set forth herein are applicable only to the facts and conditions as described at the time of this report.

This report has been prepared for the benefit of Fasken Oil & Ranch, Ltd. The information contained in this report, including all exhibits and attachments, may not be used by any other party without the express consent of Basin Environmental Service Technologies, LLC, and/or Fasken Oil & Ranch, Ltd.

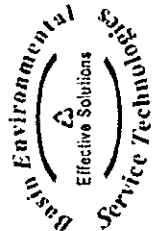
7.0 DISTRIBUTION:

- Copy 1: Geoffrey Leking
New Mexico Energy, Minerals and Natural Resources Department
Oil Conservation Division (District 1)
1625 French Drive
Hobbs, NM 88240
GeoffreyR.Leking@state.nm.us
- Copy 2: Jimmy D. Carlile
Fasken Oil and Ranch, Ltd.
303 W. Wall Ave., Suite 1800
Midland, TX 79701-5116
jimmyc@forl.com
- Copy 3: Basin Environmental Service Technologies, LLC
P.O. Box 301
Lovington, New Mexico 88260

Figures



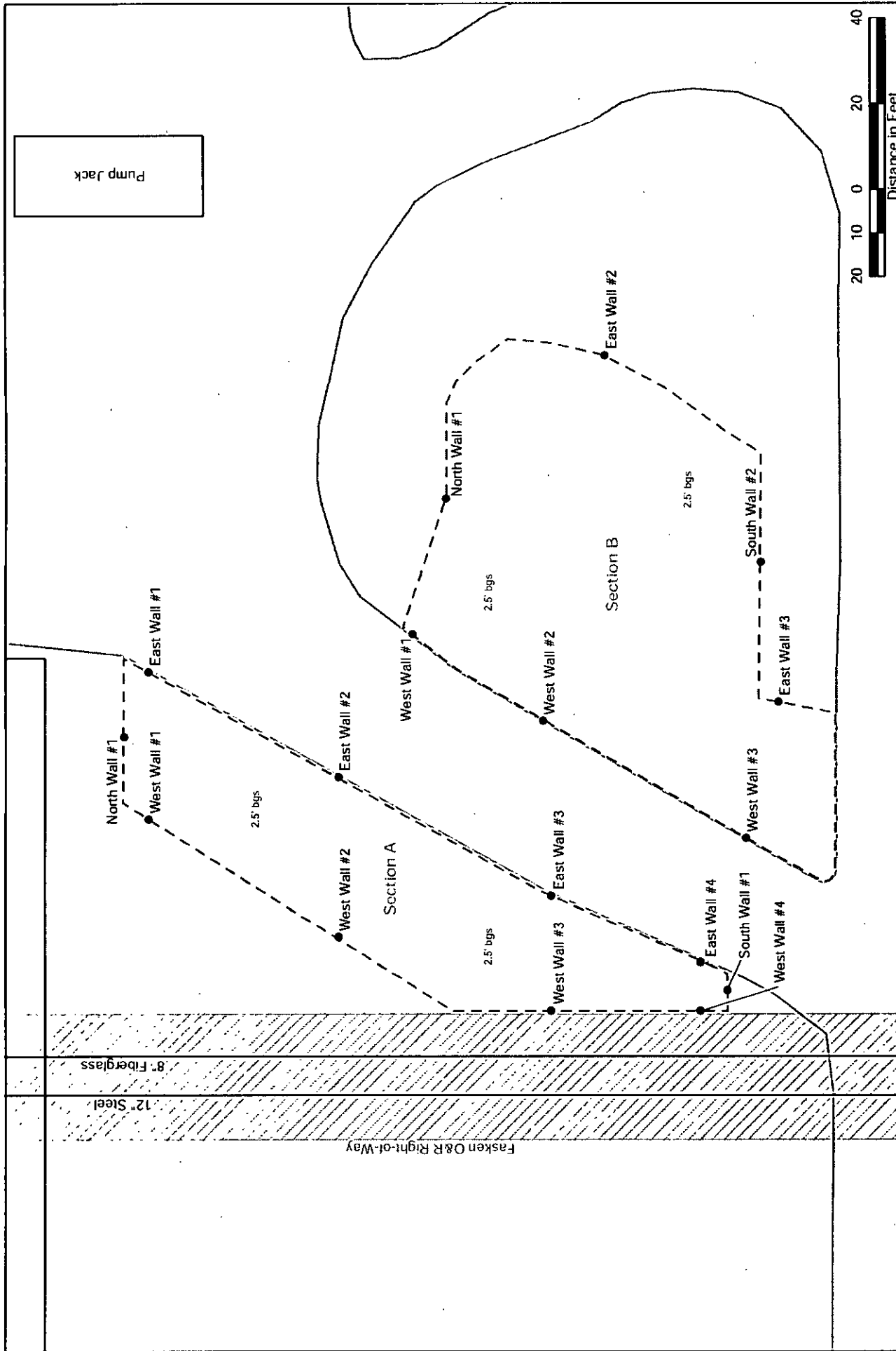
Basin Environmental Service Technologies, LLC
 3100 Plains Hwy.
 Lovington, NM 88260



Drawn By: BJA	Checked By: BRB
March 13, 2012	Scale: 1" = 2000'

Figure 1
Site Location Map
Fasken Oil & Ranch, Ltd.
Denton SWD Historical Site #3
Lea County, New Mexico





<p>Figure 2</p> <p>Site & Sample Location Map</p> <p>Fasken Oil & Ranch, Ltd.</p> <p>Denton SWD Historical Site #3</p> <p>Lea County, New Mexico</p>	<p>Basin Environmental Service Technologies, LLC</p> <p>3100 Plains Hwy.</p> <p>Lovington, NM 88260</p>	<p>Drawn By: BJA</p>	<p>Checked By: BRB</p>
		<p>March 13, 2012</p>	<p>Scale: 1" = 30'</p>

Tables

TABLE 1
CONCENTRATIONS OF CHLORIDE IN SOIL

FASKEN OIL & RANCH, LTD.
DENTON SWD HISTORICAL SITE #3
LEA COUNTY, NEW MEXICO

SAMPLE LOCATION	SAMPLE DEPTH (BGS)	SAMPLE DATE	SOIL STATUS	E 300
				CHLORIDE (mg/Kg)
Section A - North Wall #1	2.5'	3/5/2012	In-situ	784
Section A - East Wall #1	2.5'	3/5/2012	In-situ	592
Section A - East Wall #2	2.5'	3/5/2012	In-situ	3,120
Section A - East Wall #3	2.5'	3/5/2012	In-situ	2,560
Section A - West Wall #1	2.5'	3/5/2012	In-situ	912
Section A - West Wall #2	2.5'	3/5/2012	In-situ	80.0
Section A - West Wall #3	2.5'	3/5/2012	In-situ	1,640
Section B - North Wall #1	2.5'	3/5/2012	In-situ	112
Section B - East Wall #2	2.5'	3/5/2012	In-situ	672
Section B - East Wall #3	2.5'	3/5/2012	In-situ	928
Section B - West Wall #2	2.5'	3/5/2012	In-situ	3,280
Section B - West Wall #3	2.5'	3/5/2012	In-situ	2,200
Section B - South Wall #2	2.5'	3/5/2012	In-situ	1,310
Section A - East Wall #4	2.5'	3/7/2012	In-situ	3,520
Section A - West Wall #4	2.5'	3/7/2012	In-situ	3,480
Section A - South Wall #1	2.5'	3/7/2012	In-situ	3,160
Section B - West Wall #1	2.5'	3/9/2012	In-situ	96.0
NMOCD Criteria				1,000

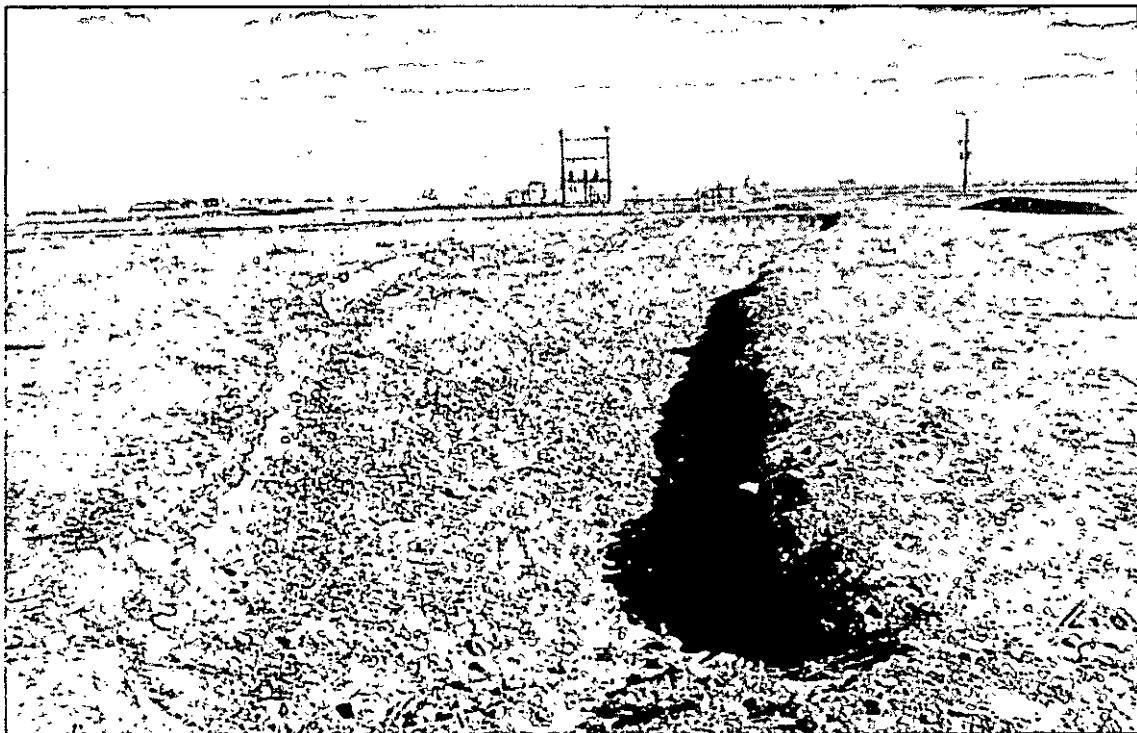
Appendices

Appendix A

Photographs



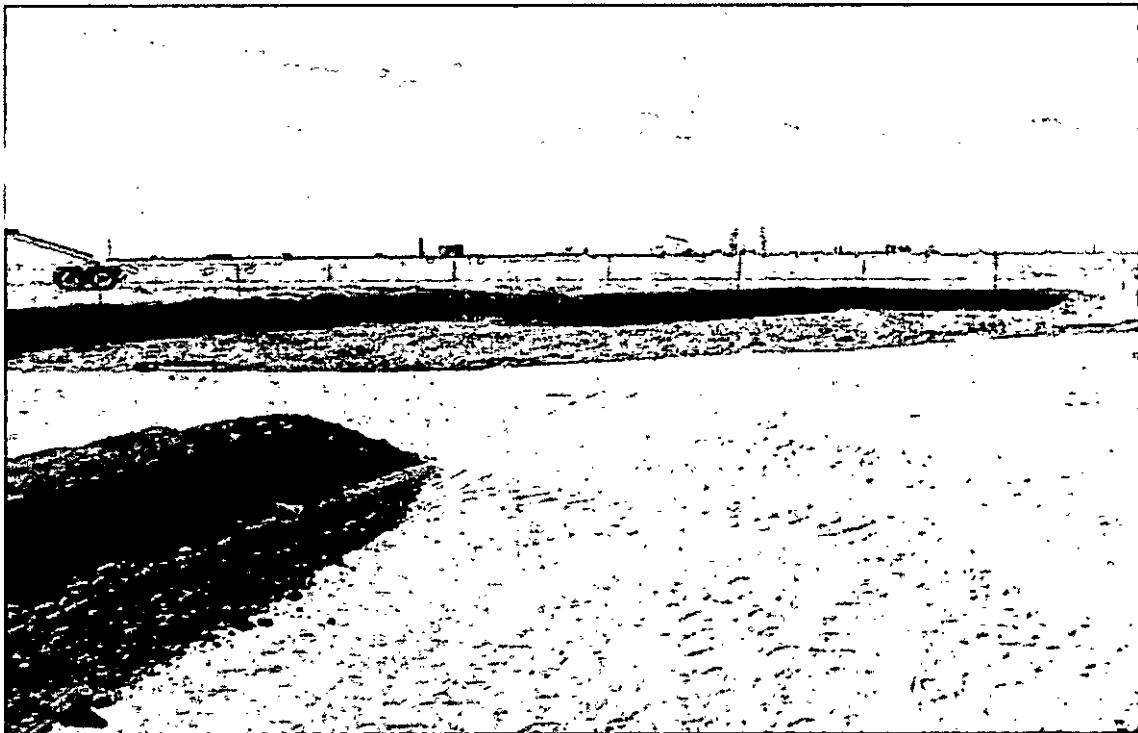
Denton SWD Historical Site #3 - Release Site (Delineation)



Denton SWD Historical Site #3 - Excavation, Section A (looking South)



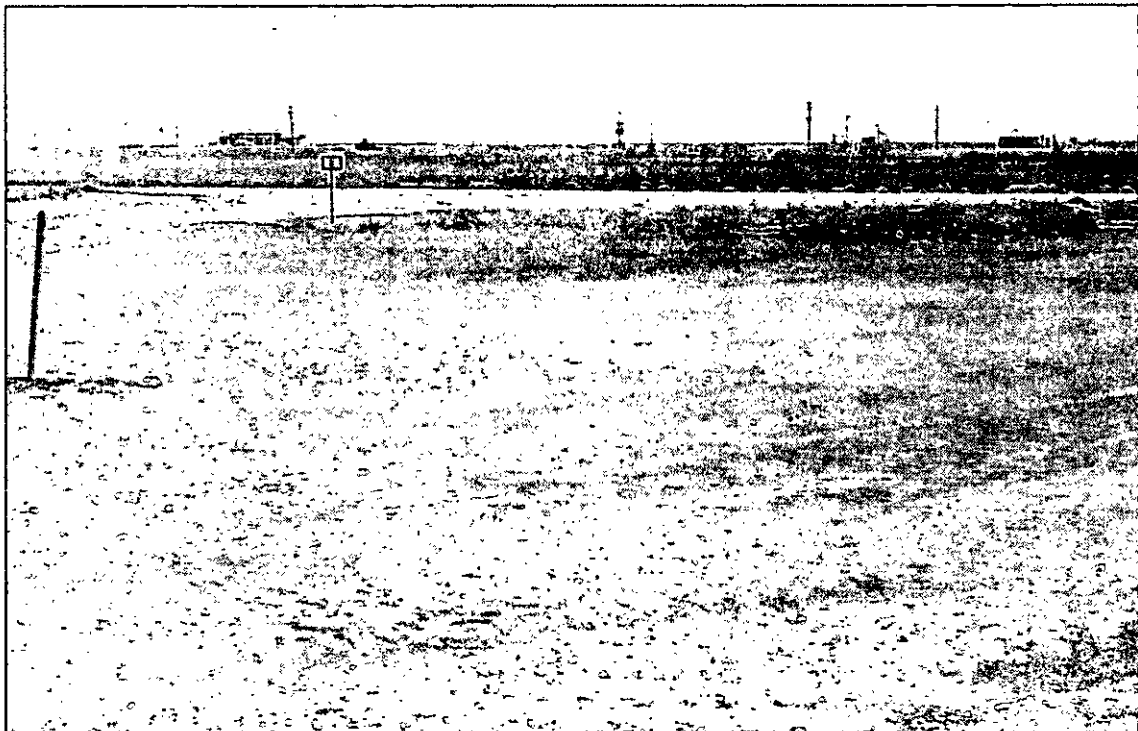
Denton SWD Historical Site #3 - Excavation, Section B (looking Northwest)



Denton SWD Historical Site #3 - Excavation, Section B (prior to installation of clay liner)



Denton SWD Historical Site #3 - Excavation, Section A (following backfill, looking South)



Denton SWD Historical Site #3 - Excavation, Section B (following backfill, looking South)

Appendix B

Laboratory Analytical Reports

March 08, 2012

BEN J. ARGUIJO

Basin Environmental Service

P.O. Box 301

Lovington, NM 88260

RE: DENTON SWD HISTORICAL SITE #3

Enclosed are the results of analyses for samples received by the laboratory on 03/06/12 9:20.

Cardinal Laboratories is accredited through Texas NELAP under certificate number T104704398-11-3. Accreditation applies to drinking water, non-potable water and solid and chemical materials. All accredited analytes are denoted by an asterisk (*). For a complete list of accredited analytes and matrices visit the TCEQ website at www.tceq.texas.gov/field/qa/lab_accred_certif.html.

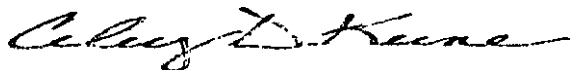
Cardinal Laboratories is accredited through the State of Colorado Department of Public Health and Environment for:

Method EPA 552.2	Haloacetic Acids (HAA-5)
Method EPA 524.2	Total Trihalomethanes (TTHM)
Method EPA 524.4	Regulated VOCs (V1, V2, V3)

Accreditation applies to public drinking water matrices.

This report meets NELAP requirements and is made up of a cover page, analytical results, and a copy of the original chain-of-custody. If you have any questions concerning this report, please feel free to contact me.

Sincerely,



Celey D. Keene

Lab Director/Quality Manager

Analytical Results For:

Basin Environmental Service
BEN J. ARGUIJO
P.O. Box 301
Lovington NM, 88260
Fax To: (575) 396-1429

Received: 03/06/2012
Reported: 03/08/2012
Project Name: DENTON SWD HISTORICAL SITE #3
Project Number: NONE GIVEN
Project Location: LEA COUNTY, NM

Sampling Date: 03/05/2012
Sampling Type: Soil
Sampling Condition: Cool & Intact
Sample Received By: Jodi Henson

Sample ID: SEC A - N WALL #1 (H200577-01)

Chloride, SM4500Cl-B		mg/kg		Analyzed By: AP					
Analyte	Result	Reporting Limit	Analyzed	Method Blank	BS	% Recovery	True Value QC	RPD	Qualifier
Chloride	784	16.0	03/07/2012	ND	416	104	400	0.00	

Sample ID: SEC A - E WALL #1 (H200577-02)

Chloride, SM4500Cl-B		mg/kg		Analyzed By: AP					
Analyte	Result	Reporting Limit	Analyzed	Method Blank	BS	% Recovery	True Value QC	RPD	Qualifier
Chloride	592	16.0	03/07/2012	ND	416	104	400	0.00	

Sample ID: SEC A - E WALL #2 (H200577-03)

Chloride, SM4500Cl-B		mg/kg		Analyzed By: AP					
Analyte	Result	Reporting Limit	Analyzed	Method Blank	BS	% Recovery	True Value QC	RPD	Qualifier
Chloride	3120	16.0	03/07/2012	ND	416	104	400	0.00	

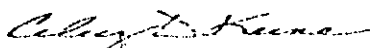
Sample ID: SEC A - E WALL #3 (H200577-04)

Chloride, SM4500Cl-B		mg/kg		Analyzed By: AP					
Analyte	Result	Reporting Limit	Analyzed	Method Blank	BS	% Recovery	True Value QC	RPD	Qualifier
Chloride	2560	16.0	03/07/2012	ND	416	104	400	0.00	

Cardinal Laboratories

*=Accredited Analyte

PLEASE NOTE: Liability and Damages. Cardinal's liability and client's exclusive remedy for any claim arising, whether based in contract or tort, shall be limited to the amount paid by client for analyses. All claims, including those for negligence and any other cause whatsoever shall be deemed waived unless made in writing and received by Cardinal within thirty (30) days after completion of the applicable service. In no event shall Cardinal be liable for incidental or consequential damages, including, without limitation, business interruptions, loss of use, or loss of profits incurred by client, its subsidiaries, affiliates or successors arising out of or related to the performance of the services hereunder by Cardinal, regardless of whether such claim is based upon any of the above stated reasons or otherwise. Results relate only to the samples identified above. This report shall not be reproduced except in full with written approval of Cardinal Laboratories.



Celey D. Keene, Lab Director/Quality Manager

Analytical Results For:

 Basin Environmental Service
 BEN J. ARGUIJO
 P.O. Box 301
 Lovington NM, 88260
 Fax To: (575) 396-1429

 Received: 03/06/2012
 Reported: 03/08/2012
 Project Name: DENTON SWD HISTORICAL SITE #3
 Project Number: NONE GIVEN
 Project Location: LEA COUNTY, NM

 Sampling Date: 03/05/2012
 Sampling Type: Soil
 Sampling Condition: Cool & Intact
 Sample Received By: Jodi Henson

Sample ID: SEC A - W WALL #1 (H200577-05)

Chloride, SM4500Cl-B		mg/kg		Analyzed By: AP					
Analyte	Result	Reporting Limit	Analyzed	Method Blank	BS	% Recovery	True Value QC	RPD	Qualifier
Chloride	912	16.0	03/07/2012	ND	416	104	400	0.00	

Sample ID: SEC A - W WALL #2 (H200577-06)

Chloride, SM4500Cl-B		mg/kg		Analyzed By: AP					
Analyte	Result	Reporting Limit	Analyzed	Method Blank	BS	% Recovery	True Value QC	RPD	Qualifier
Chloride	80.0	16.0	03/07/2012	ND	416	104	400	0.00	

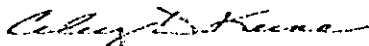
Sample ID: SEC A - W WALL #3 (H200577-07)

Chloride, SM4500Cl-B		mg/kg		Analyzed By: AP					
Analyte	Result	Reporting Limit	Analyzed	Method Blank	BS	% Recovery	True Value QC	RPD	Qualifier
Chloride	1640	16.0	03/07/2012	ND	416	104	400	0.00	

Cardinal Laboratories

*=Accredited Analyte

PLEASE NOTE: Liability and Damages. Cardinal's liability and client's exclusive remedy for any claim arising, whether based in contract or tort, shall be limited to the amount paid by client for analyses. All claims, including those for negligence and any other cause whatsoever shall be deemed waived unless made in writing and received by Cardinal within thirty (30) days after completion of the applicable service. In no event shall Cardinal be liable for incidental or consequential damages, including, without limitation, business interruptions, loss of use, or loss of profits incurred by client, its subsidiaries, affiliates or successors arising out of or related to the performance of the services hereunder by Cardinal, regardless of whether such claim is based upon any of the above stated reasons or otherwise. Results relate only to the samples identified above. This report shall not be reproduced except in full with written approval of Cardinal Laboratories.



Celey D. Keene, Lab Director/Quality Manager

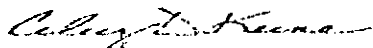
Notes and Definitions

ND	Analyte NOT DETECTED at or above the reporting limit
RPD	Relative Percent Difference
**	Samples not received at proper temperature of 6°C or below.
***	Insufficient time to reach temperature.
-	Chloride by SM4500Cl-B does not require samples be received at or below 6°C
	Samples reported on an as received basis (wet) unless otherwise noted on report

Cardinal Laboratories

*=Accredited Analyte

PLEASE NOTE: Liability and Damages. Cardinal's liability and client's exclusive remedy for any claim arising, whether based in contract or tort, shall be limited to the amount paid by client for analyses. All claims, including those for negligence and any other cause whatsoever shall be deemed waived unless made in writing and received by Cardinal within thirty (30) days after completion of the applicable service. In no event shall Cardinal be liable for incidental or consequential damages, including, without limitation, business interruptions, loss of use, or loss of profits incurred by client, its subsidiaries, affiliates or successors arising out of or related to the performance of the services hereunder by Cardinal, regardless of whether such claim is based upon any of the above stated reasons or otherwise. Results relate only to the samples identified above. This report shall not be reproduced except in full with written approval of Cardinal Laboratories.



Celestine D. Keene, Lab Director/Quality Manager

CAPODIN
Laboratories

[illegible]

Adelle DeWitt

March 08, 2012

BEN J. ARGUIJO

Basin Environmental Service

P.O. Box 301

Lovington, NM 88260

RE: DENTON SWD HISTORICAL SITE #3

Enclosed are the results of analyses for samples received by the laboratory on 03/06/12 9:20.

Cardinal Laboratories is accredited through Texas NELAP under certificate number T104704398-11-3. Accreditation applies to drinking water, non-potable water and solid and chemical materials. All accredited analytes are denoted by an asterisk (*). For a complete list of accredited analytes and matrices visit the TCEQ website at www.tceq.texas.gov/field/ga/lab_accred_certif.html.

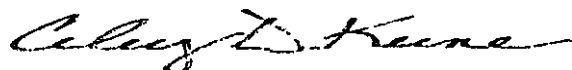
Cardinal Laboratories is accredited through the State of Colorado Department of Public Health and Environment for:

Method EPA 552.2	Haloacetic Acids (HAA-5)
Method EPA 524.2	Total Trihalomethanes (TTHM)
Method EPA 524.4	Regulated VOCs (V1, V2, V3)

Accreditation applies to public drinking water matrices.

This report meets NELAP requirements and is made up of a cover page, analytical results, and a copy of the original chain-of-custody. If you have any questions concerning this report, please feel free to contact me.

Sincerely,



Celey D. Keene

Lab Director/Quality Manager

Analytical Results For:

Basin Environmental Service
BEN J. ARGUIJO
P.O. Box 301
Lovington NM, 88260
Fax To: (575) 396-1429

Received:	03/06/2012	Sampling Date:	03/05/2012
Reported:	03/08/2012	Sampling Type:	Soil
Project Name:	DENTON SWD HISTORICAL SITE #3	Sampling Condition:	Cool & Intact
Project Number:	NONE GIVEN	Sample Received By:	Jodi Henson
Project Location:	LEA COUNTY, NM		

Sample ID: SEC B - N WALL #1 (H200578-01)

Chloride, SM4500Cl-B		mg/kg		Analyzed By: AP					
Analyte	Result	Reporting Limit	Analyzed	Method Blank	BS	% Recovery	True Value QC	RPD	Qualifier
Chloride	112	16.0	03/07/2012	ND	416	104	400	0.00	

Sample ID: SEC B - E WALL #2 (H200578-02)

Chloride, SM4500Cl-B		mg/kg		Analyzed By: AP					
Analyte	Result	Reporting Limit	Analyzed	Method Blank	BS	% Recovery	True Value QC	RPD	Qualifier
Chloride	672	16.0	03/07/2012	ND	416	104	400	0.00	

Sample ID: SEC B - E WALL #3 (H200578-03)

Chloride, SM4500Cl-B		mg/kg		Analyzed By: AP					
Analyte	Result	Reporting Limit	Analyzed	Method Blank	BS	% Recovery	True Value QC	RPD	Qualifier
Chloride	928	16.0	03/07/2012	ND	416	104	400	0.00	

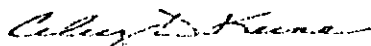
Sample ID: SEC B - W WALL #2 (H200578-04)

Chloride, SM4500Cl-B		mg/kg		Analyzed By: AP					
Analyte	Result	Reporting Limit	Analyzed	Method Blank	BS	% Recovery	True Value QC	RPD	Qualifier
Chloride	3280	16.0	03/07/2012	ND	416	104	400	0.00	

Cardinal Laboratories

*=Accredited Analyte

PLEASE NOTE: Liability and Damages. Cardinal's liability and client's exclusive remedy for any claim arising, whether based in contract or tort, shall be limited to the amount paid by client for analyses. All claims, including those for negligence and any other cause whatsoever shall be deemed waived unless made in writing and received by Cardinal within thirty (30) days after completion of the applicable service. In no event shall Cardinal be liable for incidental or consequential damages, including, without limitation, business interruptions, loss of use, or loss of profits incurred by client, its subsidiaries, affiliates or successors arising out of or related to the performance of the services hereunder by Cardinal, regardless of whether such claim is based upon any of the above stated reasons or otherwise. Results relate only to the samples identified above. This report shall not be reproduced except in full with written approval of Cardinal Laboratories.



Celey D. Keene, Lab Director/Quality Manager

Analytical Results For:

Basin Environmental Service
BEN J. ARGUIJO
P.O. Box 301
Lovington NM, 88260
Fax To: (575) 396-1429

Received:	03/06/2012	Sampling Date:	03/05/2012
Reported:	03/08/2012	Sampling Type:	Soil
Project Name:	DENTON SWD HISTORICAL SITE #3	Sampling Condition:	Cool & Intact
Project Number:	NONE GIVEN	Sample Received By:	Jodi Henson
Project Location:	LEA COUNTY, NM		

Sample ID: SEC B - W WALL #3 (H200578-05)

Chloride, SM4500Cl-B		mg/kg		Analyzed By: AP					
Analyte	Result	Reporting Limit	Analyzed	Method Blank	BS	% Recovery	True Value QC	RPD	Qualifier
Chloride	2200	16.0	03/07/2012	ND	416	104	400	0.00	

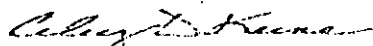
Sample ID: SEC B - S WALL #2 (H200578-06)

Chloride, SM4500Cl-B		mg/kg		Analyzed By: AP					
Analyte	Result	Reporting Limit	Analyzed	Method Blank	BS	% Recovery	True Value QC	RPD	Qualifier
Chloride	1310	16.0	03/07/2012	ND	416	104	400	0.00	

Cardinal Laboratories

*=Accredited Analyte

PLEASE NOTE: Liability and Damages. Cardinal's liability and client's exclusive remedy for any claim arising, whether based in contract or tort, shall be limited to the amount paid by client for analyses. All claims, including those for negligence and any other cause whatsoever shall be deemed waived unless made in writing and received by Cardinal within thirty (30) days after completion of the applicable service. In no event shall Cardinal be liable for incidental or consequential damages, including, without limitation, business interruptions, loss of use, or loss of profits incurred by client, its subsidiaries, affiliates or successors arising out of or related to the performance of the services hereunder by Cardinal, regardless of whether such claim is based upon any of the above stated reasons or otherwise. Results relate only to the samples identified above. This report shall not be reproduced except in full with written approval of Cardinal Laboratories.



Celey D. Keene, Lab Director/Quality Manager

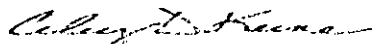
Notes and Definitions

ND	Analyte NOT DETECTED at or above the reporting limit
RPD	Relative Percent Difference
**	Samples not received at proper temperature of 6°C or below.
***	Insufficient time to reach temperature.
-	Chloride by SM4500Cl-B does not require samples be received at or below 6°C Samples reported on an as received basis (wet) unless otherwise noted on report

Cardinal Laboratories

*=Accredited Analyte

PLEASE NOTE: Liability and Damages. Cardinal's liability and client's exclusive remedy for any claim arising, whether based in contract or tort, shall be limited to the amount paid by client for analyses. All claims, including those for negligence and any other cause whatsoever shall be deemed waived unless made in writing and received by Cardinal within thirty (30) days after completion of the applicable service. In no event shall Cardinal be liable for incidental or consequential damages, including, without limitation, business interruptions, loss of use, or loss of profits incurred by client, its subsidiaries, affiliates or successors arising out of or related to the performance of the services hereunder by Cardinal, regardless of whether such claim is based upon any of the above stated reasons or otherwise. Results relate only to the samples identified above. This report shall not be reproduced except in full with written approval of Cardinal Laboratories.



Celey D. Keene, Lab Director/Quality Manager

CHAIN-OF-CUSTODY AND ANALYSIS REQUEST

101 East Marland, Hobbs, NM 88240
(575) 393-2326 FAX (575) 393-2476

BILL TO										ANALYSIS REQUEST															
Company Name: Basin Environmental Service Technologies, LLC Project Manager: Ben J. Arguijo Address: P.O. Box 301 City: Lovington State: NM Zip: 88260 Phone #: (575) 396-2378 Fax #: (575) 396-1429 Project #: Project Name: Denton SWD Historical Site #3 Project Location: Lea Co., NM Sampler Name: Bobby Blackwood										P.O. #: Company: Basin Env. Attn: Address: City: State: Zip: Phone #: Fax #:															
Lab I.D.	Sample I.D.	(G)RAB OR (C)OMP.	# CONTAINERS	MATRIX					PRESERV		SAMPLING		DATE	TIME											
				GROUNDWATER	WASTEWATER	SOIL	SLUDGE	OTHER:	ACID/BASE:	ICE / COOL	OTHER:														
1	Section B - North Wall #1	✓	1	✓						✓			3/5/12	1230	X	Chloride									
2	Section B - East Wall #2												1250												
3	Section B - East Wall #3												1310												
4	Section B - West Wall #2												1330												
5	Section B - West Wall #3												1350												
6	Section B - South Wall #2	✓	✓										1410												

PLEASE NOTE: Liability and Damages: Cardinal's liability and client's exclusive remedy for any claim arising from this contract shall be limited to the amount paid by the client for the analysis. All claims, including those for negligence and any other cause whatsoever shall be deemed waived unless made in writing and received by Cardinal within 30 days after completion of the applicable service. In no event shall Cardinal be liable for incidental or consequential damages, including without limitation, business interruptions, loss of use, or loss of profits sustained by client, its subsidiaries, affiliates or successors arising out of or related to the performance of services hereunder by Cardinal, regardless of whether such claim is based upon any of the above stated reasons or otherwise.

Relinquished By:	Date:	Received By:	Date:	Phone Result:	Yes	No	Add'l Phone #:
	3/5/12		3/5/12				
Relinquished By:	Date:	Received By:	Date:	Fax Result:	Yes	No	Add'l Fax #:
	3/5/12		3/5/12				
Delivered By: (Circle One)	Date:	Time:	Checked By:	REMARKS:			
Sampler - UPS - Bus - Other:	3/5/12	1200	Ben J. Arguijo	Please email results to bjarquijo@basinenv.com.			

Ben J. Arguijo
0730

March 13, 2012

BEN J. ARGUIJO

Basin Environmental Service

P.O. Box 301

Lovington, NM 88260

RE: DENTON SWD HISTORICAL SITE #3

Enclosed are the results of analyses for samples received by the laboratory on 03/08/12 9:05.

Cardinal Laboratories is accredited through Texas NELAP under certificate number T104704398-11-3. Accreditation applies to drinking water, non-potable water and solid and chemical materials. All accredited analytes are denoted by an asterisk (*). For a complete list of accredited analytes and matrices visit the TCEQ website at www.tceq.texas.gov/field/qa/lab_accred_certif.html.

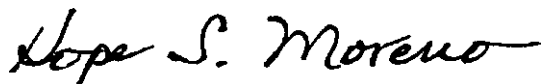
Cardinal Laboratories is accredited through the State of Colorado Department of Public Health and Environment for:

Method EPA 552.2	Haloacetic Acids (HAA-5)
Method EPA 524.2	Total Trihalomethanes (TTHM)
Method EPA 524.4	Regulated VOCs (V1, V2, V3)

Accreditation applies to public drinking water matrices.

This report meets NELAP requirements and is made up of a cover page, analytical results, and a copy of the original chain-of-custody. If you have any questions concerning this report, please feel free to contact me.

Sincerely,



Hope Moreno

Inorganic Technical Director

Analytical Results For:

 Basin Environmental Service
 BEN J. ARGUIJO
 P.O. Box 301
 Lovington NM, 88260
 Fax To: (575) 396-1429

 Received: 03/08/2012
 Reported: 03/13/2012
 Project Name: DENTON SWD HISTORICAL SITE #3
 Project Number: NONE GIVEN
 Project Location: LEA COUNTY, NM

 Sampling Date: 03/07/2012
 Sampling Type: Soil
 Sampling Condition: Cool & Intact
 Sample Received By: Jodi Henson

Sample ID: SEC A - EAST WALL #4 (H200608-01)

Chloride, SM4500Cl-B		mg/kg		Analyzed By: AP					
Analyte	Result	Reporting Limit	Analyzed	Method Blank	BS	% Recovery	True Value QC	RPD	Qualifier
Chloride	3520	16.0	03/09/2012	ND	416	104	400	0.00	

Sample ID: SEC A - WEST WALL #4 (H200608-02)

Chloride, SM4500Cl-B		mg/kg		Analyzed By: AP					
Analyte	Result	Reporting Limit	Analyzed	Method Blank	BS	% Recovery	True Value QC	RPD	Qualifier
Chloride	3480	16.0	03/09/2012	ND	416	104	400	0.00	


Sample ID: SEC A - SOUTH WALL #1 (H200608-03)

Chloride, SM4500Cl-B		mg/kg		Analyzed By: AP					
Analyte	Result	Reporting Limit	Analyzed	Method Blank	BS	% Recovery	True Value QC	RPD	Qualifier
Chloride	3160	16.0	03/09/2012	ND	416	104	400	0.00	

Cardinal Laboratories

* = Accredited Analyte

PLEASE NOTE: Liability and Damages. Cardinal's liability and client's exclusive remedy for any claim arising, whether based in contract or tort, shall be limited to the amount paid by client for analyses. All claims, including those for negligence and any other cause whatsoever shall be deemed waived unless made in writing and received by Cardinal within thirty (30) days after completion of the applicable service. In no event shall Cardinal be liable for incidental or consequential damages, including, without limitation, business interruptions, loss of use, or loss of profits incurred by client, its subsidiaries, affiliates or successors arising out of or related to the performance of the services hereunder by Cardinal, regardless of whether such claim is based upon any of the above stated reasons or otherwise. Results relate only to the samples identified above. This report shall not be reproduced except in full with written approval of Cardinal Laboratories.



Hope Moreno, Inorganic Technical Director

Notes and Definitions

ND Analyte NOT DETECTED at or above the reporting limit

RPD Relative Percent Difference

** Samples not received at proper temperature of 6°C or below.

*** Insufficient time to reach temperature.

- Chloride by SM4500Cl-B does not require samples be received at or below 6°C

Samples reported on an as received basis (wet) unless otherwise noted on report

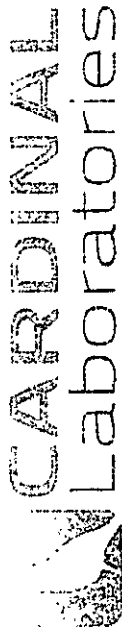
Cardinal Laboratories

*=Accredited Analyte

PLEASE NOTE: Liability and Damages. Cardinal's liability and client's exclusive remedy for any claim arising, whether based in contract or tort, shall be limited to the amount paid by client for analyses. All claims, including those for negligence and any other cause whatsoever shall be deemed waived unless made in writing and received by Cardinal within thirty (30) days after completion of the applicable service. In no event shall Cardinal be liable for incidental or consequential damages, including, without limitation, business interruptions, loss of use, or loss of profits incurred by client, its subsidiaries, affiliates or successors arising out of or related to the performance of the services hereunder by Cardinal, regardless of whether such claim is based upon any of the above stated reasons or otherwise. Results relate only to the samples identified above. This report shall not be reproduced except in full with written approval of Cardinal Laboratories.



Hope Moreno, Inorganic Technical Director



CHAIN-OF-CUSTODY AND ANALYSIS REQUEST

101 East Marland, Hobbs, NM 88240
(575) 393-2326 FAX (575) 393-2476

[illegible]

Relinquished By: _____		Date: <u>8/7/12</u>	Time: _____	Received By: _____	Please email results to bjargul@easternv.com . REMARKS: _____
Relinquished By: _____		Date: <u>8/7/12</u>	Time: <u>1745</u>	Received By: _____	
Delivered By: (Circle One)		Date: <u>8/7/12</u>	Time: <u>0700</u>	Sample Condition: Cool <input checked="" type="checkbox"/> Intact <input checked="" type="checkbox"/> Dry <input checked="" type="checkbox"/> Yes <input checked="" type="checkbox"/> No <input checked="" type="checkbox"/> Initials: <u>BN</u>	
Sampler: UPS - Bus - Other: _____					

† Cardinal cannot accept verbal changes. Please fax written changes to 505.393-2476

March 13, 2012

BEN J. ARGUIJO

Basin Environmental Service

P.O. Box 301

Lovington, NM 88260

RE: DENTON SWD HISTORICAL SITE #3

Enclosed are the results of analyses for samples received by the laboratory on 03/12/12 8:50.

Cardinal Laboratories is accredited through Texas NELAP under certificate number T104704398-11-3. Accreditation applies to drinking water, non-potable water and solid and chemical materials. All accredited analytes are denoted by an asterisk (*). For a complete list of accredited analytes and matrices visit the TCEQ website at www.tceq.texas.gov/field/qa/lab_accred_certif.html.

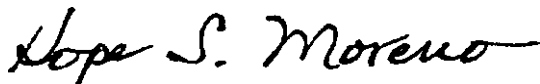
Cardinal Laboratories is accredited through the State of Colorado Department of Public Health and Environment for:

Method EPA 552.2	Haloacetic Acids (HAA-5)
Method EPA 524.2	Total Trihalomethanes (TTHM)
Method EPA 524.4	Regulated VOCs (V1, V2, V3)

Accreditation applies to public drinking water matrices.

This report meets NELAP requirements and is made up of a cover page, analytical results, and a copy of the original chain-of-custody. If you have any questions concerning this report, please feel free to contact me.

Sincerely,



Hope Moreno

Inorganic Technical Director

Analytical Results For:

Basin Environmental Service
BEN J. ARGUIJO
P.O. Box 301
Lovington NM, 88260
Fax To: (575) 396-1429

Received:	03/12/2012	Sampling Date:	03/09/2012
Reported:	03/13/2012	Sampling Type:	Soil
Project Name:	DENTON SWD HISTORICAL SITE #3	Sampling Condition:	Cool & Intact
Project Number:	NONE GIVEN	Sample Received By:	Jodi Henson
Project Location:	LEA COUNTY, NM		

Sample ID: SEC B - W WALL #1 (H200623-01)

Chloride, SM4500Cl-B

mg/kg

Analyzed By: AP

Analyte	Result	Reporting Limit	Analyzed	Method Blank	BS	% Recovery	True Value QC	RPD	Qualifier
Chloride	96.0	16.0	03/13/2012	ND	400	100	400	3.92	

Cardinal Laboratories

* = Accredited Analyte

PLEASE NOTE: Liability and Damages. Cardinal's liability and client's exclusive remedy for any claim arising, whether based in contract or tort, shall be limited to the amount paid by client for analyses. All claims, including those for negligence and any other cause whatsoever shall be deemed waived unless made in writing and received by Cardinal within thirty (30) days after completion of the applicable service. In no event shall Cardinal be liable for incidental or consequential damages, including, without limitation, business interruptions, loss of use, or loss of profits incurred by client, its subsidiaries, affiliates or successors arising out of or related to the performance of the services hereunder by Cardinal, regardless of whether such claim is based upon any of the above stated reasons or otherwise. Results relate only to the samples identified above. This report shall not be reproduced except in full with written approval of Cardinal Laboratories.



Hope Moreno, Inorganic Technical Director

Notes and Definitions

ND Analyte NOT DETECTED at or above the reporting limit

RPD Relative Percent Difference

** Samples not received at proper temperature of 6°C or below.

*** Insufficient time to reach temperature.


- Chloride by SM4500Cl-B does not require samples be received at or below 6°C

Samples reported on an as received basis (wet) unless otherwise noted on report

Cardinal Laboratories

*=Accredited Analyte

PLEASE NOTE: Liability and Damages. Cardinal's liability and client's exclusive remedy for any claim arising, whether based in contract or tort, shall be limited to the amount paid by client for analyses. All claims, including those for negligence and any other cause whatsoever shall be deemed waived unless made in writing and received by Cardinal within thirty (30) days after completion of the applicable service. In no event shall Cardinal be liable for incidental or consequential damages, including, without limitation, business interruptions, loss of use, or loss of profits incurred by client, its subsidiaries, affiliates or successors arising out of or related to the performance of the services hereunder by Cardinal, regardless of whether such claim is based upon any of the above stated reasons or otherwise. Results relate only to the samples identified above. This report shall not be reproduced except in full with written approval of Cardinal Laboratories.



Hope Moreno, Inorganic Technical Director

CARBONAL
Laboratories

Company Name: Basin Environmental Service Technologies, LLC
Project Manager: Ben J. Arguijo
Address: P.O. Box 301
City: Lovington
State: NM Zip: 88260
Phone #: (575) 396-2378 Fax #: (575) 396-1429
Project #: Project Owner: Pasken Oil & Ranch, Inc.
Project Name: Denton SMD Historical Site #3
Project Location: Lea Co., NM
Sample Name: Bobby Blackwood

BILL TO
P.O. #:
Company: Basin Ecv.
Attn:
Address:
City:
State: Zip:
Phone #:
Fax #:

ANALYSIS REQUEST

[illegible]

PLEASE NOTE: Liability and Damages: Cardinal's liability and client's exclusive remedy for any claim arising whether based in contract or tort, shall be limited to the amount paid by the client for the service and all claims, including those for negligence and any other cause whatsoever shall be deemed waived unless made in writing and received by Cardinal within 30 days after completion of the applicable service. In no event shall Cardinal be liable for incidental or consequential damages, including without limitation, business interruption, loss of use, or loss of profits incurred by client, its subsidiaries or successors arising out of or relating to the performance of service, however by Cardinal, regardless of whether such claim is based upon any of the above and/or reasons set forth herein.

Relinquished By: _____ Date: / / Received By: _____

Received By: _____ Phone Resu _____

Phone Result: ☐ Yes ☐ No Add'l Phone #:

Figure 1

Fax Result:

Fax Result: ☐ Yes ☐ No Add'l Fax #:

1. 2019年12月31日，甲公司“应付账款”科目贷方余额为100万元，其中明细科目贷方余额有80万元，借方余额有20万元；“预付账款”科目借方余额为20万元，其中明细科目借方余额有15万元，贷方余额有5万元；“应收账款”科目借方余额为10万元，其中明细科目借方余额有5万元，贷方余额有5万元。不考虑其他因素，甲公司2019年12月31日资产负债表中“应付账款”项目的期末余额为（ ）万元。

Relinquished By:

Received By:

Received By: _____

1

Please email results to bjaryuijo@casinenv.com.

10

CHIEF OF POLICE

Delivered By: (Circle One)

CHECKED BY: _____
(Initials)

Sampler - UPS - Bus - Other:

۱۰۰

† Cardinal cannot accept verbal changes. Please fax written changes to 505-393-2476

2/22/2013 3:12:12 03:89 68:50

Appendix C

Soil Disposal Manifests

GANDY-MARLEY, INC.

P.O. Box 1658
Roswell, NM 88202
(575) 347-0434
Fax (575) 347-0435

No. 10907

LEASE OPERATOR/SHIPPER/COMPANY: HASKEN OIL & RANCH

LEASE NAME: DENTON SUD HIST SITE #3

TRANSPORTER COMPANY: A. MARTINEZ TIME: 2:30 AM/PM

DATE: 03-06-12 VEHICLE NO.: 27 DRIVER NO.:

CHARGE TO:

TYPE OF MATERIAL

OCD

☐ Other Material: ☒ Contaminated soil ☐ C-117 No.:

☐ BS&W content:

Description: CL

VOLUME OF MATERIAL ☐ YARDS 20 : CELL# LF : ☐

AS A CONDITION TO GANDY-MARLEY, INC.'S ACCEPTANCE OF THE MATERIALS SHIPPED WITH THIS JOB TICKET, OPERATOR/SHIPPER REPRESENTS AND WARRANTS THAT THE WASTE MATERIAL SHIPPED HERewith IS MATERIAL EXEMPT FROM THE RESOURCE, CONSERVATION AND RECOVERY ACT OF 1976, AS AMENDED FROM TIME TO TIME, 40 U.S.C. §6901, et seq., THE NM HEALTH AND SAF. CODE, §361.001, et seq. AND REGULATIONS RELATED THERETO, BY VIRTUE OF THE EXEMPTION AFFORDED CONTAMINATED SOILS AND OTHER WASTE ASSOCIATED WITH THE EXPLORATION, DEVELOPMENT OR PRODUCTION OF CRUDE OIL OR NATURAL GAS OR GEOTHERMAL ENERGY.

ALSO AS A CONDITION TO GANDY-MARLEY, INC.'S ACCEPTANCE OF THE MATERIALS SHIPPED WITH THIS JOB TICKET, TRANSPORTER REPRESENTS AND WARRANTS THAT ONLY THE MATERIAL DELIVERED BY OPERATOR/SHIPPER TO TRANSPORTER IS NOW DELIVERED BY TRANSPORTER TO GANDY-MARLEY, INC.'S FACILITY FOR DISPOSAL.

THIS WILL CERTIFY that the above Transporter loaded the material represented by this Transporter Statement at the above described location, and that it was tendered by the above described shipper. This will certify that no additional materials were added to this load, and that the material was delivered without incident.

DRIVER: FINES TO

FACILITY REPRESENTATIVE: 9 Torton

White - GMI

Canary - Shipper

Pink - GMI

Gold - Transporter

GANDY-MARLEY, INC.

P.O. Box 1658
Roswell, NM 88202
(575) 347-0434
Fax (575) 347-0435

No. 10920

LEASE OPERATOR/SHIPPER/COMPANY:

LEASE NAME: DENTON SWD HIGT. Site #3

TRANSPORTER COMPANY: I & W

DATE: 03-07-12

VEHICLE NO.: 02

TIME: 9:17 AM/PM

CHARGE TO:

DRIVER NO.:

TYPE OF MATERIAL

☐ Other Material:

OCD

☒ Contaminated soil

Description: CL

☐ BS&W content:

☐ C-117 No.:

VOLUME OF MATERIAL [] YARDS 20

CELL# LF : []

AS A CONDITION TO GANDY-MARLEY, INC.'S ACCEPTANCE OF THE MATERIALS SHIPPED WITH THIS JOB TICKET, OPERATOR/SHIPPER REPRESENTS AND WARRANTS THAT THE WASTE MATERIAL SHIPPED HERewith IS MATERIAL EXEMPT FROM THE RESOURCE CONSERVATION AND RECOVERY ACT OF 1976, AS AMENDED FROM TIME TO TIME, 40 U.S.C. §8901, et seq., THE NM HEALTH AND SAFETY CODE, §361.001, et seq. AND REGULATIONS RELATED THERETO, BY VIRTUE OF THE EXEMPTION AFFORDED CONTAMINATED SOILS AND OTHER WASTE ASSOCIATED WITH THE EXPLORATION, DEVELOPMENT OR PRODUCTION OF CRUDE OIL OR NATURAL GAS OR GEOTHERMAL ENERGY.

ALSO AS A CONDITION TO GANDY-MARLEY, INC.'S ACCEPTANCE OF THE MATERIALS SHIPPED WITH THIS JOB TICKET, TRANSPORTER REPRESENTS AND WARRANTS THAT ONLY THE MATERIAL DELIVERED BY OPERATOR/SHIPPER TO TRANSPORTER IS NOW DELIVERED BY TRANSPORTER TO GANDY-MARLEY, INC.'S FACILITY FOR DISPOSAL.

THIS WILL CERTIFY that the above Transporter loaded the material represented by this Transporter Statement at the above described location, and that it was tendered by the above described shipper. This will certify that no additional materials were added to this load, and that the material was delivered without incident.

DRIVER:

FACILITY REPRESENTATIVE:

White - GMI

Canary - Shipper

Pink - GMI

Gold - Transporter

GANDY-MARLEY, INC.

P.O. Box 1658
Roswell, NM 88202
(575) 347-0434
Fax (575) 347-0435

No. 11010

LEASE OPERATOR/SHIPPER/COMPANY: FASKEN OIL & RANCH

LEASE NAME: DENTON SUDD HIST. SITE #3

TRANSPORTER COMPANY: ANGEL'S

TIME: 3:49 AM/PM

DATE: 03-07-12

VEHICLE NO.: 01

DRIVER NO.:

CHARGE TO:

TYPE OF MATERIAL

OCD

☐ Other Material:

☒ Contaminated soil

☐ BS&W content:

☐ C-117 No.:

Description: CL

VOLUME OF MATERIAL ☐ YARDS 20 : CELL# LF : ☐

AS A CONDITION TO GANDY-MARLEY, INC.'S ACCEPTANCE OF THE MATERIALS SHIPPED WITH THIS JOB TICKET, OPERATOR/SHIPPER REPRESENTS AND WARRANTS THAT THE WASTE MATERIAL SHIPPED HERewith IS MATERIAL EXEMPT FROM THE RESOURCE CONSERVATION AND RECOVERY ACT OF 1976, AS AMENDED FROM TIME TO TIME, 40 U.S.C. §6901, et seq. THE NM HEALTH AND SAFETY CODE, §361.001, et seq. AND REGULATIONS RELATED THERETO, BY VIRTUE OF THE EXEMPTION AFFORDED CONTAMINATED SOILS AND OTHER WASTE ASSOCIATED WITH THE EXPLORATION, DEVELOPMENT OR PRODUCTION OF CRUDE OIL OR NATURAL GAS OR GEOTHERMAL ENERGY.

ALSO AS A CONDITION TO GANDY-MARLEY, INC.'S ACCEPTANCE OF THE MATERIALS SHIPPED WITH THIS JOB TICKET, TRANSPORTER REPRESENTS AND WARRANTS THAT ONLY THE MATERIAL DELIVERED BY OPERATOR/SHIPPER TO TRANSPORTER IS NOW DELIVERED BY TRANSPORTER TO GANDY-MARLEY, INC.'S FACILITY FOR DISPOSAL.

THIS WILL CERTIFY that the above Transporter loaded the material represented by this Transporter Statement at the above described location, and that it was tendered by the above described shipper. This will certify that no additional materials were added to this load, and that the material was delivered without incident.

DRIVER: ALLEN

FACILITY REPRESENTATIVE: Bob Allen

White - GMI

Canary - Shipper

Pink - GMI

Gold - Transporter

GANDY·MARLEY, INC.

P.O. Box 1658
Roswell, NM 88202
(575) 347-0434
Fax (575) 347-0435

No. 11012

LEASE OPERATOR/SHIPPER/COMPANY: FASKEN OIL & RANCH

LEASE NAME: DENTON SWD HIST. SITE #3

TRANSPORTER COMPANY: M. R. McCracken TIME: 8:55 AM/PM

DATE: 03-08-12 VEHICLE NO.: 04 DRIVER NO.:

CHARGE TO:

TYPE OF MATERIAL

OCD

☐ Other Material

☒ Contaminated soil

☐ C-117 No.:

☐ BS&W content:

Description: CL

VOLUME OF MATERIAL ☐ YARDS 20 : CELL# LF : ☐

AS A CONDITION TO GANDY·MARLEY, INC.'S ACCEPTANCE OF THE MATERIALS SHIPPED WITH THIS JOB TICKET, OPERATOR/SHIPPER REPRESENTS AND WARRANTS THAT THE WASTE MATERIAL SHIPPED HERewith IS MATERIAL EXEMPT FROM THE RESOURCE, CONSERVATION AND RECOVERY ACT OF 1976, AS AMENDED FROM TIME TO TIME, 40 U.S.C. §6901, et seq., THE NM HEALTH AND SAF. CODE, §361.001, et seq., AND REGULATIONS RELATED THERETO, BY VIRTUE OF THE EXEMPTION AFFORDED CONTAMINATED SOILS AND OTHER WASTE ASSOCIATED WITH THE EXPLORATION, DEVELOPMENT OR PRODUCTION OF CRUDE OIL OR NATURAL GAS OR GEOTHERMAL ENERGY.

ALSO AS A CONDITION TO GANDY·MARLEY, INC.'S ACCEPTANCE OF THE MATERIALS SHIPPED WITH THIS JOB TICKET, TRANSPORTER REPRESENTS AND WARRANTS THAT ONLY THE MATERIAL DELIVERED BY OPERATOR/SHIPPER TO TRANSPORTER IS NOW DELIVERED BY TRANSPORTER TO GANDY·MARLEY, INC.'S FACILITY FOR DISPOSAL.

THIS WILL CERTIFY that the above Transporter loaded the material represented by this Transporter Statement at the above described location, and that it was tendered by the above described shipper. This will certify that no additional materials were added to this load, and that the material was delivered without incident.

DRIVER: Michael R. McCracken

FACILITY REPRESENTATIVE: J. Tanton

White - GMI

Canary - Shipper

Pink - GMI

Gold - Transporter

GANDY-MARLEY, INC.

P.O. Box 1658
Roswell, NM 88202
(575) 347-0434
Fax (575) 347-0435

No. 11020

LEASE OPERATOR/SHIPPER/COMPANY: FASKEO OIL & RANCHLEASE NAME: DELTON SWD HIST SITE #3TRANSPORTER COMPANY: M.R. McCORMICK TIME: 3:40 AM/PMDATE: 05-07-12 VEHICLE NO.: 04 DRIVER NO.:

CHARGE TO:

TYPE OF MATERIAL**OCD**☐ Other Material: ☒ Contaminated soil ☐ C-117 No.:☐ BS&W content:Description: CLVOLUME OF MATERIAL ☐ YARDS 20 : CELL# LF : ☐

AS A CONDITION TO GANDY-MARLEY, INC.'S ACCEPTANCE OF THE MATERIALS SHIPPED WITH THIS JOB TICKET, OPERATOR/SHIPPER REPRESENTS AND WARRANTS THAT THE WASTE MATERIAL SHIPPED HERewith IS MATERIAL EXEMPT FROM THE RESOURCE, CONSERVATION AND RECOVERY ACT OF 1976, AS AMENDED FROM TIME TO TIME, 40 U.S.C. §6901, et seq. THE NM HEALTH AND SAF. CODE, §361.001, et seq. AND REGULATIONS RELATED THERETO, BY VIRTUE OF THE EXEMPTION AFFORDED CONTAMINATED SOILS AND OTHER WASTE ASSOCIATED WITH THE EXPLORATION, DEVELOPMENT OR PRODUCTION OF CRUDE OIL OR NATURAL GAS OR GEOTHERMAL ENERGY.

ALSO AS A CONDITION TO GANDY-MARLEY, INC.'S ACCEPTANCE OF THE MATERIALS SHIPPED WITH THIS JOB TICKET, TRANSPORTER REPRESENTS AND WARRANTS THAT ONLY THE MATERIAL DELIVERED BY OPERATOR/SHIPPER TO TRANSPORTER IS NOW DELIVERED BY TRANSPORTER TO GANDY-MARLEY, INC.'S FACILITY FOR DISPOSAL.

THIS WILL CERTIFY that the above Transporter loaded the material represented by this Transporter Statement at the above described location, and that it was tendered by the above described shipper. This will certify that no additional materials were added to this load, and that the material was delivered without incident.

DRIVER: Michael R. McCormickFACILITY REPRESENTATIVE: Paul Thomas

White - GMI

Canary - Shipper

Pink - GMI

Gold - Transporter

CL BACK HAUL CLAY

GANDY-MARLEY, INC.

P.O. Box 1658
Roswell, NM 88202
(575) 347-0434
Fax (575) 347-0435

No. 11024

LEASE OPERATOR/SHIPPER/COMPANY: FASKEN OIL & RANCH

LEASE NAME: DENTON SWD HCT. SITE 13

TRANSPORTER COMPANY: ANGEL'S TIME: 9:12 AM/PM

DATE: 03-09-12 VEHICLE NO.: 02 DRIVER NO.:

CHARGE TO:

TYPE OF MATERIAL

OCD

☐ Other Material:

☒ Contaminated soil

☐ C-117 No.:

☐ BS&W content:

Description: CL

VOLUME OF MATERIAL ☐ YARDS 20 : CELL# LF : ☐

AS A CONDITION TO GANDY-MARLEY, INC.'S ACCEPTANCE OF THE MATERIALS SHIPPED WITH THIS JOB TICKET, OPERATOR/SHIPPER REPRESENTS AND WARRANTS THAT THE WASTE MATERIAL SHIPPED HERewith IS MATERIAL EXEMPT FROM THE RESOURCE CONSERVATION AND RECOVERY ACT OF 1976, AS AMENDED FROM TIME TO TIME, 40 U.S.C. §6901, et seq., THE NM HEALTH AND SAF. CODE, §361.001, et seq. AND REGULATIONS RELATED THERETO, BY VIRTUE OF THE EXEMPTION AFFORDED CONTAMINATED SOILS AND OTHER WASTE ASSOCIATED WITH THE EXPLORATION, DEVELOPMENT OR PRODUCTION OF CRUDE OIL OR NATURAL GAS OR GEOTHERMAL ENERGY.

ALSO AS A CONDITION TO GANDY-MARLEY, INC.'S ACCEPTANCE OF THE MATERIALS SHIPPED WITH THIS JOB TICKET, TRANSPORTER REPRESENTS AND WARRANTS THAT ONLY THE MATERIAL DELIVERED BY OPERATOR/SHIPPER TO TRANSPORTER IS NOW DELIVERED BY TRANSPORTER TO GANDY-MARLEY, INC.'S FACILITY FOR DISPOSAL.

THIS WILL CERTIFY that the above Transporter loaded the material represented by this Transporter Statement at the above described location, and that it was tendered by the above described shipper. This will certify that no additional materials were added to this load, and that the material was delivered without incident.

DRIVER:

FACILITY REPRESENTATIVE:

White - GMI

Canary - Shipper

Pink - GMI

Gold - Transporter

BACK HAUL - CLAY - Site 4

GANDY-MARLEY, INC.

P.O. Box 1658
Roswell, NM 88202
(575) 347-0434
Fax (575) 347-0435

No. 11088 ①

LEASE OPERATOR/SHIPPER/COMPANY: FASKEN OIL & RANCH

LEASE NAME: DENTON SWD Hist Site # 3

TRANSPORTER COMPANY: A MARTINEZ TIME: (AM/PM)

DATE: 03-12-12 VEHICLE NO.: 19 DRIVER NO.:

CHARGE TO:

TYPE OF MATERIAL

OCD

☐ Other Material

☒ Contaminated soil

☐ C-117 No. _____

☐ BS&W content: _____

Description: CL

VOLUME OF MATERIAL [] YARDS 20 : CELL# 41 : []

AS A CONDITION TO GANDY-MARLEY, INC.'S ACCEPTANCE OF THE MATERIALS SHIPPED WITH THIS JOB TICKET, OPERATOR/SHIPPER REPRESENTS AND WARRANTS THAT THE WASTE MATERIAL SHIPPED HERewith IS MATERIAL EXEMPT FROM THE RESOURCE CONSERVATION AND RECOVERY ACT OF 1976, AS AMENDED FROM TIME TO TIME, 40 U.S.C. §6901, et seq., THE NM HEALTH AND SAF. CODE, §361.001, et seq. AND REGULATIONS RELATED THERETO, BY VIRTUE OF THE EXEMPTION AFFORDED CONTAMINATED SOILS AND OTHER WASTE ASSOCIATED WITH THE EXPLORATION, DEVELOPMENT OR PRODUCTION OF CRUDE OIL OR NATURAL GAS OR GEOTHERMAL ENERGY.

ALSO AS A CONDITION TO GANDY-MARLEY, INC.'S ACCEPTANCE OF THE MATERIALS SHIPPED WITH THIS JOB TICKET, TRANSPORTER REPRESENTS AND WARRANTS THAT ONLY THE MATERIAL DELIVERED BY OPERATOR/SHIPPER TO TRANSPORTER IS NOW DELIVERED BY TRANSPORTER TO GANDY-MARLEY, INC.'S FACILITY FOR DISPOSAL.

THIS WILL CERTIFY that the above Transporter loaded the material represented by this Transporter Statement at the above described location, and that it was tendered by the above described shipper. This will certify that no additional materials were added to this load, and that the material was delivered without incident.

DRIVER: Penny K. [Signature]

FACILITY REPRESENTATIVE: [Signature]

White - GMI

Canary - Shipper

Pink - GMI

Gold - Transporter

BACK HAUL - CLAY -

GANDY-MARLEY, INC.

P.O. Box 1658
Roswell, NM 88202
(575) 347-0434
Fax (575) 347-0435

No. 11090

LEASE OPERATOR/SHIPPER/COMPANY: FASKEN OIL & RANCH

LEASE NAME: DENTON SWD HIST. SITE #3

TRANSPORTER COMPANY: Angel's TIME: 9:20 AM/PM

DATE: 03-12-12 VEHICLE NO.: 02 DRIVER NO.:

CHARGE TO:

TYPE OF MATERIAL

OCD

☐ Other Material: ☒ Contaminated soil ☐ C-117 No. _____
☐ BS&W content: _____

Description: CL

VOLUME OF MATERIAL ☐ YARDS 20 CELL# LF ☐

AS A CONDITION TO GANDY-MARLEY, INC.'S ACCEPTANCE OF THE MATERIALS SHIPPED WITH THIS JOB TICKET, OPERATOR/SHIPPER REPRESENTS AND WARRANTS THAT THE WASTE MATERIAL SHIPPED HERewith IS MATERIAL EXEMPT FROM THE RESOURCE CONSERVATION AND RECOVERY ACT OF 1976, AS AMENDED FROM TIME TO TIME, 40 U.S.C. §6901 et seq. THE NM HEALTH AND SAF. CODE, §361.001 et seq. AND REGULATIONS RELATED THERETO, BY VIRTUE OF THE EXEMPTION AFFORDED CONTAMINATED SOILS AND OTHER WASTE ASSOCIATED WITH THE EXPLORATION, DEVELOPMENT OR PRODUCTION OF CRUDE OIL OR NATURAL GAS OR GEOTHERMAL ENERGY.

ALSO AS A CONDITION TO GANDY-MARLEY, INC.'S ACCEPTANCE OF THE MATERIALS SHIPPED WITH THIS JOB TICKET, TRANSPORTER REPRESENTS AND WARRANTS THAT ONLY THE MATERIAL DELIVERED BY OPERATOR/SHIPPER TO TRANSPORTER IS NOW DELIVERED BY TRANSPORTER TO GANDY-MARLEY, INC.'S FACILITY FOR DISPOSAL.

THIS WILL CERTIFY that the above Transporter loaded the material represented by this Transporter Statement at the above described location, and that it was tendered by the above described shipper. This will certify that no additional materials were added to this load, and that the material was delivered without incident.

DRIVER: Joe M. V.

FACILITY REPRESENTATIVE: Q. T. T.

White - GMI

Canary - Shipper

Pink - GMI

Gold - Transporter