

7/20/2016 DATE IN	SUSPENSE	MAM ENGINEER	7/20/2016 LOGGED IN	PLC TYPE	PMAM 1620259273 APP NO.
----------------------	----------	-----------------	------------------------	-------------	----------------------------

ABOVE THIS LINE FOR DIVISION USE ONLY

NEW MEXICO OIL CONSERVATION DIVISION

- Engineering Bureau -

1220 South St. Francis Drive, Santa Fe, NM 87505



HAWK 8 BATTERY - Application for Surface Commingle & OLM & OLS of 7 wells to be added to CTB-439

ADMINISTRATIVE APPLICATION CHECKLIST

THIS CHECKLIST IS MANDATORY FOR ALL ADMINISTRATIVE APPLICATIONS FOR EXCEPTIONS TO DIVISION RULES AND REGULATIONS WHICH REQUIRE PROCESSING AT THE DIVISION LEVEL IN SANTA FE

Application Acronyms:

[NSL-Non-Standard Location] [NSP-Non-Standard Proration Unit] [SD-Simultaneous Dedication]
 [DHC-Downhole Commingling] [CTB-Lease Commingling] [PLC-Pool/Lease Commingling]
 [PC-Pool Commingling] [OLS - Off-Lease Storage] [OLM-Off-Lease Measurement]
 [WFX-Waterflood Expansion] [PMX-Pressure Maintenance Expansion]
 [SWD-Salt Water Disposal] [IPI-Injection Pressure Increase]
 [EOR-Qualified Enhanced Oil Recovery Certification] [PPR-Positive Production Response]

[1] TYPE OF APPLICATION - Check Those Which Apply for [A]

[A] Location - Spacing Unit - Simultaneous Dedication
☐ NSL ☐ NSP ☐ SD

Check One Only for [B] or [C]

[B] Commingling - Storage - Measurement
☐ DHC ☒ CTB ☐ PLC ☐ PC ☒ OLS ☒ OLM

[C] Injection - Disposal - Pressure Increase - Enhanced Oil Recovery
☐ WFX ☐ PMX ☐ SWD ☐ IPI ☐ EOR ☐ PPR

[D] Other: Specify SURFACE COMMINGLE & OLS & OLM

-PLC 45/
 -Lime Rock Resources
 II-ALP
 277558

RECEIVED OCO
 2016 JUL 20 P 2:27

[2] NOTIFICATION REQUIRED TO: - Check Those Which Apply, or ☐ Does Not Apply

[A] ☒ Working, Royalty or Overriding Royalty Interest Owners
 [B] ☐ Offset Operators, Leaseholders or Surface Owner
 [C] ☒ Application is One Which Requires Published Legal Notice
 [D] ☐ Notification and/or Concurrent Approval by BLM or SLO
U.S. Bureau of Land Management - Commissioner of Public Lands, State Land Office
 [E] ☐ For all of the above, Proof of Notification or Publication is Attached, and/or,
 [F] ☐ Waivers are Attached

Well
 Hawk 8 N Fed #50
 3p-015-43277
 + 7 others
 P04
 -Red Lake
 Glonietz yes
 51120
 -Red Lake
 Guggen-Grayburg
 51130

[3] SUBMIT ACCURATE AND COMPLETE INFORMATION REQUIRED TO PROCESS THE TYPE OF APPLICATION INDICATED ABOVE.

[4] **CERTIFICATION:** I hereby certify that the information submitted with this application for administrative approval is **accurate** and **complete** to the best of my knowledge. I also understand that **no action** will be taken on this application until the required information and notifications are submitted to the Division.

Note: Statement must be completed by an individual with managerial and/or supervisory capacity.

Mike Pippin	<i>Mike Pippin</i>	Petroleum Engineer	July 15, 2016
Print or Type Name	Signature	Title	Date

mike@pippinllc.com
 e-mail Address

LIME ROCK RESOURCES, II-A, L.P.
Mike Pippin
3104 N. Sullivan Avenue
Farmington, NM 87401
505-327-4573 (phone) mike@pippinllc.com

July 18, 2016

NMOCD
Mike McMillan
1220 South St. Francis Drive
Santa Fe, NM 87505

RE: Application for Surface Commingling & Off Lease Measurement & Storage
HAWK 8 N FEDERAL #21 – API#: 30-015-34964 N Sec 8 T18S R27E
HAWK 8 L FEDERAL #15 – API#: 30-015-39807 L Sec 8 T18S R27E
HAWK 8 K FEDERAL #14 – API#: 30-015-34366 K Sec 8 T18S R27E
HAWK 8 K FEDERAL #13 – API#: 30-015-34337 K Sec 8 T18S R27E
HAWK 8 J FEDERAL #47 – API#: 30-015-42835 J Sec 8 T18S R27E
HAWK 8 D FEDERAL #46 – API#: 30-015-28301 D Sec 8 T18S R27E
HAWK 17 C FEDERAL #2 – API#: 30-015-29726 C Sec 17 T18S R27E
HAWK 8 N FEDERAL #50 – API#: 30-015-43277 N Sec 8 T18S R27E (Not Drilled Yet)
Eddy County, New Mexico

Dear Mr. McMillan,

LIME ROCK RESOURCES II-A, L.P. (operator) would like to surface commingle production from the referenced eight Federal oil wells, which are located on three different Federal leases and producing from two State pools (Red Lake, Glorieta-Yeso – 51120 and Red Lake, Queen-Grayburg-San Andres - 51300). These wells will be an addition to State order CTB-439, which was approved on 10/24/96. These wells have very marginal production except for one new well and one well that is not drilled yet. See the attached well list, which includes API number, Federal lease number, location, formation, & well tests.

The central tank battery is located on the Hawk 8 K Federal #4 well pad (K Sec 8 T18S R27E). All the oil & gas from these eight wells is normally surface commingled at heater treater #1 (see the attached battery schematic). The oil is then sold to Holly Transportation, LLC and the gas to DCP Midstream, L.P. Each of these wells will be tested separately through heater treater #2 on a quarterly basis to obtain oil & gas allocations. Produced water from this battery is piped through the SWD gathering system to the Federal T SWD well. Attached is form C-107B, C-102 for each well, a Federal lease map showing the relative location of the wells and battery, a schematic indicating the facilities in the Hawk 8 Battery, a list of the interest owners, and a copy of the letter to the interest owners and the BLM, along with other necessary supporting data. Lime Rock inherited this situation when it purchased the wells from Devon.

This surface commingle of oil & gas and off lease storage and measurement of oil will maximize the ultimate recovery of oil & gas. Eliminating redundant surface equipment will prevent waste, reduce the environmental impact, and the premature P&A of many wells.

The ORRI in these Federal wells is not identical, but the Federal royalty is identical in each well, so the Federal royalty will not be adversely affected by this action. All the interest owners and the BLM have been notified.

Should you have any questions or concerns, please contact me at 505-327-4573.

Best Regards,



Mike Pippin PE
Petroleum Engineer

Enclosures



NEW MEXICO ENERGY, MINERALS
& NATURAL RESOURCES DEPARTMENT

OIL CONSERVATION DIVISION
2040 South Pacheco Street
Santa Fe, New Mexico 87505
(505) 827-7131

COMMINGLING ORDER CTB-439

Devon Energy Corporation
20 North Broadway, Suite 1500
Oklahoma City, Oklahoma 73102-8260

Attention: Mr. Ken Gray

The above named company is hereby authorized to commingle Red Lake Queen-Grayburg-San Andres (51300) Pool production from the following leases:

Lease: Hawk '8' Federal Well Nos.1, 2, 7 and 8
(Federal Lease No.NM-89156)
Description: NW/4 SE/4, SE/4 SW/4, and;

Lease: Hawk '8' Federal Well Nos.3, 5, 6, 9 and 10
(Federal Lease No.LC-070678)
Description: N/2 SW/4, SW/4 SE/4, and;

Lease: Hawk '8' Federal Well Nos.11 and 12
(Federal Lease No.NM-29273)
Description: SE/4 SE/4, of

Section 8, Township 18 South, Range 27 East, NMPM, Eddy County, New Mexico.

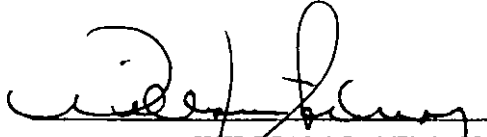
Production shall be allocated to each lease by well tests. (If this method is to be authorized, all commingled production must be of identical ownership including working interest, royalty interest, and overriding royalty interest.)

NOTE: This installation shall be installed and operated in accordance with the applicable provisions of Rule 303 of the Division Rules and Regulations and the Division "Manual for the Installation and Operation of Commingling Facilities." It is the responsibility of the producer to notify the transporter of this commingling authority.

FURTHER: The operator shall notify the District Office prior to implementation of the commingling process. Production shall be stored in Hawk '8' Federal tank battery facility located in Unit Letter K, Section 8, Township 18 South, Range 27 East, Eddy County, New Mexico.

Administrative Order CTB-439
Devon Energy Corporation
October 24, 1996
Page 2

DONE at Santa Fe, New Mexico, on this 24th day of October, 1996.


WILLIAM J. LEMAY,
Division Director

WJL/BES

cc: Oil Conservation Division - Artesia
Bureau of Land Management - Carlsbad

Monthly Allocation Summary

From Dec 2015 to May 2016

Print Date: 07/21/2016 8:21 am

Page 1 of 3

Date	Days On	Days Inj.	Oil (bbls)				Gas (mcf)				(mmbtu/mscf)				Water (bbls)							
			Beginning	Ending	Runs	RetroGrade	Production	Theo Prod	Production	Injection	Sales	Flash Gas	Other	Theo Prod	WAVg BTU Factor	Beginning	Ending	Runs	Production	Injection	Theo Prod	
1638 Hawk 17C Fed #2 S1																						
Dry 15.025																						
12/1/2015	31.0	0.0	6.4	10.1	16.8	0.0	20.5	27.1	211	0	190	0	21	190	1.486	1.538	0.0	0.0	29.6	29.6	0.0	27.1
1/1/2016	31.0	0.0	10.1	6.9	26.7	0.0	23.5	26.2	216	0	192	0	24	183	1.480	1.537	0.0	0.0	23.6	23.6	0.0	26.2
2/1/2016	29.0	0.0	6.9	6.0	28.4	0.0	27.5	29.0	268	0	266	0	2	203	1.534	1.538	0.0	0.0	31.8	31.8	0.0	29.0
3/1/2016	31.0	0.0	6.0	4.3	27.1	0.0	25.4	31.0	223	0	217	0	6	217	1.524	1.538	0.0	0.0	32.1	32.1	0.0	31.0
4/1/2016	30.0	0.0	4.3	7.9	17.1	0.0	20.6	30.0	184	0	182	0	2	210	1.532	1.538	0.0	0.0	28.6	28.6	0.0	30.0
5/1/2016	31.0	0.0	7.9	5.6	23.3	0.0	21.0	24.5	170	0	163	0	7	217	1.516	1.538	0.0	0.0	27.1	27.1	0.0	31.0
Sub Total:			41.7	40.8	139.4	0.0	138.5	167.8	1272	0	1210	0	61	1220			0.0	0.0	172.8	172.8	0.0	174.3
1639 Hawk 8D Fed #46(Form. WRLU) S02 (Yeso)																						
Dry 15.025																						
12/1/2015	31.0	0.0	19.3	30.4	50.5	0.0	61.6	81.5	727	0	655	0	73	652	1.486	1.538	0.0	0.0	1246.8	1246.8	0.0	1141.0
1/1/2016	31.0	0.0	30.4	20.6	80.3	0.0	70.5	78.6	739	0	657	0	82	629	1.480	1.537	0.0	0.0	991.1	991.1	0.0	1100.8
2/1/2016	29.0	0.0	20.6	18.1	85.1	0.0	82.6	87.0	919	0	914	0	6	696	1.534	1.538	0.0	0.0	1337.6	1337.6	0.0	1218.0
3/1/2016	31.0	0.0	18.1	13.0	81.4	0.0	76.3	93.0	764	0	744	0	21	744	1.524	1.538	0.0	0.0	1347.5	1347.5	0.0	1302.0
4/1/2016	30.0	0.0	13.0	11.5	31.7	0.0	30.2	44.0	630	0	623	0	6	720	1.532	1.538	0.0	0.0	1112.1	1112.1	0.0	1168.0
5/1/2016	31.0	0.0	11.5	13.6	49.2	0.0	51.2	60.0	583	0	559	0	24	744	1.516	1.538	0.0	0.0	877.2	877.2	0.0	1004.0
Sub Total:			113.0	107.3	378.1	0.0	372.4	444.1	4362	0	4151	0	211	4185			0.0	0.0	6912.3	6912.3	0.0	6933.8
3634 Hawk 8J Federal #047																						
Dry 15.025																						
12/1/2015	24.0	0.0	232.9	321.0	562.1	0.0	650.2	860.2	4536	0	4083	0	452	4066	1.486	1.538	0.0	0.0	17424.3	17424.3	0.0	15945.2
1/1/2016	31.0	0.0	321.0	319.2	1092.0	0.0	1090.2	1216.0	4761	0	4236	0	525	4053	1.480	1.537	0.0	0.0	20323.5	20323.5	0.0	22571.7
2/1/2016	29.0	0.0	319.2	552.9	2286.1	0.0	2519.7	2655.3	11509	0	11436	0	73	8713	1.534	1.538	0.0	0.0	28276.0	28276.0	0.0	25748.5
3/1/2016	31.0	0.0	552.9	397.9	2484.3	0.0	2329.4	2840.0	11310	0	11006	0	304	11012	1.524	1.538	0.0	0.0	25200.6	25200.6	0.0	24349.0
4/1/2016	30.0	0.0	397.9	554.7	1298.0	0.0	1454.8	2117.0	7607	0	7532	0	75	8700	1.532	1.538	0.0	0.0	17864.3	17864.3	0.0	18763.0
5/1/2016	31.0	0.0	554.7	293.0	1366.6	0.0	1104.9	1294.0	5720	0	5482	0	238	7300	1.516	1.538	0.0	0.0	15495.8	15495.8	0.0	17736.0
Sub Total:			2378.7	2438.7	9089.1	0.0	9149.1	10982.4	45443	0	43776	0	1668	43843			0.0	0.0	124584.6	124584.6	0.0	125113.3
1642 Hawk 8K Fed 13 C01(Yeso) TESTS																						
Dry 15.025																						
12/1/2015	0.0	0.0	0.0	0.0	0.0	0.0	0.0	0.0	0	0	0	0	0	0	1.000	0.000	0.0	0.0	0.0	0.0	0.0	0.0
1/1/2016	0.0	0.0	0.0	0.0	0.0	0.0	0.0	0.0	0	0	0	0	0	0	1.000	0.000	0.0	0.0	0.0	0.0	0.0	0.0
2/1/2016	0.0	0.0	0.0	0.0	0.0	0.0	0.0	0.0	0	0	0	0	0	0	1.000	0.000	0.0	0.0	0.0	0.0	0.0	0.0
3/1/2016	0.0	0.0	0.0	0.0	0.0	0.0	0.0	0.0	0	0	0	0	0	0	1.000	0.000	0.0	0.0	0.0	0.0	0.0	0.0
4/1/2016	0.0	0.0	0.0	0.0	0.0	0.0	0.0	0.0	0	0	0	0	0	0	1.000	0.000	0.0	0.0	0.0	0.0	0.0	0.0

Monthly Allocation Summary

From Dec 2015 to May 2016

Print Date: 07/21/2016 8:21 am

Page 2 of 3

Date	Days On	Days Inj.	Oil (bbls)				Gas (mcf)							(mmbtu/mscf)		Water (bbls)					
			Beginning	Ending	Runs	RetroGrade	Production	Theo Prod	Production	Injection	Sales	Flash Gas	Other	Theo Prod	WAvg BTU	BTU Factor	Beginning	Ending	Runs	Production	Injection
1642 Hawk 8K Fed 13 C01(Yeso) TESTS			Dry 15.025																		
5/1/2016	0.0	0.0	0.0	0.0	0.0	0.0	0.0	0.0	0	0	0	0	0	0	0 1.000 0.000	0.0	0.0	0.0	0.0	0.0	0.0
Sub Total:			0.0	0.0	0.0	0.0	0.0	0.0	0	0	0	0	0	0	0	0.0	0.0	0.0	0.0	0.0	0.0
1643 Hawk 8K Fed 13 C02 (SA)			Dry 15.025																		
12/1/2015	0.0	0.0	0.0	0.0	0.0	0.0	0.0	0.0	0	0	0	0	0	0	0 1.000 0.000	0.0	0.0	0.0	0.0	0.0	0.0
1/1/2016	0.0	0.0	0.0	0.0	0.0	0.0	0.0	0.0	0	0	0	0	0	0	0 1.000 0.000	0.0	0.0	0.0	0.0	0.0	0.0
2/1/2016	0.0	0.0	0.0	0.0	0.0	0.0	0.0	0.0	0	0	0	0	0	0	0 1.000 0.000	0.0	0.0	0.0	0.0	0.0	0.0
3/1/2016	0.0	0.0	0.0	0.0	0.0	0.0	0.0	0.0	0	0	0	0	0	0	0 1.000 0.000	0.0	0.0	0.0	0.0	0.0	0.0
4/1/2016	0.0	0.0	0.0	0.0	0.0	0.0	0.0	0.0	0	0	0	0	0	0	0 1.000 0.000	0.0	0.0	0.0	0.0	0.0	0.0
5/1/2016	0.0	0.0	0.0	0.0	0.0	0.0	0.0	0.0	0	0	0	0	0	0	0 1.000 0.000	0.0	0.0	0.0	0.0	0.0	0.0
Sub Total:			0.0	0.0	0.0	0.0	0.0	0.0	0	0	0	0	0	0	0	0.0	0.0	0.0	0.0	0.0	0.0
1644 Hawk 8K Fed 14 S01(Yeso) T/A			Dry 15.025																		
12/1/2015	0.0	0.0	0.0	0.0	0.0	0.0	0.0	0.0	0	0	0	0	0	0	0 1.000 0.000	0.0	0.0	0.0	0.0	0.0	0.0
1/1/2016	0.0	0.0	0.0	0.0	0.0	0.0	0.0	0.0	0	0	0	0	0	0	0 1.000 0.000	0.0	0.0	0.0	0.0	0.0	0.0
2/1/2016	0.0	0.0	0.0	0.0	0.0	0.0	0.0	0.0	0	0	0	0	0	0	0 1.000 0.000	0.0	0.0	0.0	0.0	0.0	0.0
3/1/2016	0.0	0.0	0.0	0.0	0.0	0.0	0.0	0.0	0	0	0	0	0	0	0 1.000 0.000	0.0	0.0	0.0	0.0	0.0	0.0
4/1/2016	0.0	0.0	0.0	0.0	0.0	0.0	0.0	0.0	0	0	0	0	0	0	0 1.000 0.000	0.0	0.0	0.0	0.0	0.0	0.0
5/1/2016	0.0	0.0	0.0	0.0	0.0	0.0	0.0	0.0	0	0	0	0	0	0	0 1.000 0.000	0.0	0.0	0.0	0.0	0.0	0.0
Sub Total:			0.0	0.0	0.0	0.0	0.0	0.0	0	0	0	0	0	0	0	0.0	0.0	0.0	0.0	0.0	0.0
1645 Hawk 8K Fed 14 S02 (SA)			Dry 15.025																		
12/1/2015	31.0	0.0	15.0	10.1	25.4	0.0	20.5	27.2	667	0	600	0	66	598	1.486 1.538	0.0	0.0	1276.5	1276.5	0.0	1168.2
1/1/2016	12.0	0.0	10.1	1.9	14.7	0.0	6.5	7.2	186	0	166	0	21	159	1.480 1.537	0.0	0.0	279.1	279.1	0.0	310.0
2/1/2016	29.0	0.0	1.9	6.0	23.4	0.0	27.5	29.0	843	0	837	0	5	638	1.534 1.538	0.0	0.0	1369.4	1369.4	0.0	1247.0
3/1/2016	31.0	0.0	6.0	3.7	24.1	0.0	21.7	26.5	700	0	682	0	19	682	1.524 1.538	0.0	0.0	1416.9	1416.9	0.0	1369.0
4/1/2016	30.0	0.0	3.7	2.0	6.9	0.0	5.2	7.5	577	0	571	0	6	660	1.532 1.538	0.0	0.0	1652.9	1652.9	0.0	1736.0
5/1/2016	31.0	0.0	2.0	1.8	6.8	0.0	6.6	7.8	534	0	512	0	22	682	1.516 1.538	0.0	0.0	1706.3	1706.3	0.0	1953.0
Sub Total:			38.8	25.5	101.3	0.0	88.0	105.1	3508	0	3369	0	139	3418		0.0	0.0	7701.1	7701.1	0.0	7783.1

Monthly Allocation Summary

From Dec 2015 to May 2016

Print Date: 07/21/2016 8:21 am

Page 3 of 3

Date	Days On	Days Inj.	Oil (bbls)					Gas (mcf)					(mmbtu/mscf)			Water (bbls)						
			Beginning	Ending	Runs	RetroGrade	Production	Theo Prod	Production	Injection	Sales	Flash Gas	Other	Theo Prod	WAVg BTU Factor	Beginning	Ending	Runs	Production	Injection	Theo Prod	
1910	Hawk 8L Fed #015		Dry 15 025																			
12/1/2015	31.0	0.0	51.5	81.1	134.6	0.0	164.3	217.3	3424	0	3083	0	341	3070	1.486	1.538	0.0	0.0	5165.5	5165.5	0.0	4727.0
1/1/2016	31.0	0.0	81.1	55.0	214.0	0.0	188.0	209.7	3479	0	3095	0	384	2962	1.480	1.537	0.0	0.0	4106.1	4106.1	0.0	4560.3
2/1/2016	29.0	0.0	55.0	45.8	218.0	0.0	208.8	220.0	4329	0	4301	0	27	3277	1.534	1.538	0.0	0.0	5146.0	5146.0	0.0	4686.0
3/1/2016	31.0	0.0	45.8	26.1	172.3	0.0	152.6	186.0	3598	0	3501	0	97	3503	1.524	1.538	0.0	0.0	3657.6	3657.6	0.0	3534.0
4/1/2016	30.0	0.0	26.1	47.2	102.6	0.0	123.7	180.0	2964	0	2935	0	29	3390	1.532	1.538	0.0	0.0	3256.2	3256.2	0.0	3420.0
5/1/2016	31.0	0.0	47.2	42.1	163.9	0.0	158.8	186.0	2745	0	2631	0	114	3503	1.516	1.538	0.0	0.0	3087.6	3087.6	0.0	3534.0
Sub Total:			306.7	297.3	1005.5	0.0	996.1	1199.0	20539	0	19546	0	993	19704			0.0	0.0	24419.0	24419.0	0.0	24461.3
1650	Hawk 8N Fed # 21 C01(Yeso) TESTS		Dry 15.025																			
12/1/2015	31.0	0.0	19.8	29.6	50.2	0.0	60.0	163.0	205	0	184	0	20	869	1.486	1.538	0.0	0.0	1272.3	1272.3	0.0	2390.7
1/1/2016	10.0	0.0	29.6	4.0	39.3	0.0	13.6	31.3	41	0	37	0	5	167	1.480	1.537	0.0	0.0	201.0	201.0	0.0	458.3
2/1/2016	29.0	0.0	4.0	17.6	66.8	0.0	80.4	174.0	259	0	257	0	2	928	1.534	1.538	0.0	0.0	1364.8	1364.8	0.0	2552.0
3/1/2016	31.0	0.0	17.6	10.4	68.0	0.0	60.7	152.0	215	0	209	0	6	992	1.524	1.538	0.0	0.0	1666.3	1666.3	0.0	3306.0
4/1/2016	30.0	0.0	10.4	12.4	30.5	0.0	32.5	97.0	177	0	175	0	2	960	1.532	1.538	0.0	0.0	769.2	769.2	0.0	1659.0
5/1/2016	31.0	0.0	12.4	4.7	25.5	0.0	17.9	43.0	164	0	157	0	7	992	1.516	1.538	0.0	0.0	206.4	206.4	0.0	485.0
Sub Total:			93.9	78.8	280.2	0.0	265.1	660.3	1061	0	1020	0	41	4908			0.0	0.0	5480.0	5480.0	0.0	10851.0
1651	Hawk 8N Fed # 21 C02 (SA)		Dry 15.025																			
12/1/2015	31.0	0.0	20.9	31.2	52.9	0.0	63.2	0.0	765	0	689	0	76	0	1.486	1.538	0.0	0.0	1340.2	1340.2	0.0	0.0
1/1/2016	10.0	0.0	31.2	4.2	41.4	0.0	14.4	0.0	154	0	137	0	17	0	1.480	1.537	0.0	0.0	211.7	211.7	0.0	0.0
2/1/2016	29.0	0.0	4.2	18.6	70.3	0.0	84.7	0.0	967	0	961	0	6	0	1.534	1.538	0.0	0.0	1437.7	1437.7	0.0	0.0
3/1/2016	31.0	0.0	18.6	10.9	71.6	0.0	64.0	0.0	804	0	782	0	22	0	1.524	1.538	0.0	0.0	1755.3	1755.3	0.0	0.0
4/1/2016	30.0	0.0	10.9	13.0	32.1	0.0	34.2	0.0	662	0	656	0	7	0	1.532	1.538	0.0	0.0	810.3	810.3	0.0	0.0
5/1/2016	31.0	0.0	13.0	5.0	26.9	0.0	18.8	0.0	613	0	588	0	26	0	1.516	1.538	0.0	0.0	217.4	217.4	0.0	0.0
Sub Total:			98.9	83.0	295.2	0.0	279.3	0.0	3966	0	3813	0	153	0			0.0	0.0	5772.6	5772.6	0.0	0.0
Total:			3071.5	3071.3	11288.8	0.0	11288.8	13558.7	80151	0	78865	0	3266	77279			0.0	0.0	175042.3	175042.3	0.0	175316.8



Drawn By: WBS

Hawk 8 Federal Tank Battery
Lime Rock Resources
Eddy County, New Mexico
SPCC Site Plan

ADDITIONAL WELLS PRODUCING INTO HAWK 8 BATTERY & CTB-439

APPLICATION FOR SURFACE COMMINGLE & OFF LEASE STORAGE & MEASUREMENT

7/15/16 -- Mike Pippin

Well	API#	LEASE NUMBER	LOCATION	FORMATION	BOPD	MCF/D	BWPD
HAWK 8N FED #21	30-015-34964	NMNM89156	N 8 18 27	Yeso	1	32	11
HAWK 8L FED #15	30-015-39807	NMLC070678-A	L 8 18 27	Yeso	6	113	114
HAWK 8K FED #14	30-015-34336	NMLC070678-A	K 8 18 27	San Andres	1	22	45
HAWK 8K FED #13	30-015-34337	NMLC070678-A	K 8 18 27	San Andres	1	22	11
HAWK 8J FED #47	30-015-42835	NMNM89156	J 8 18 27	Yeso	77	100	711
HAWK 8D FED #46	30-015-28301	NMLC070678-A	D 8 18 S7	Yeso	2	24	32
HAWK 17C FED #2	30-015-29726	NMNM0758	C 17 18 27	San Andres	1	21	1
HAWK 8 N FED #50	30-015-43277	NMNM89156	N 8 18 27	Yeso	Not Drilled Yet		

District I
1625 N. French Drive, Hobbs, NM 88240
District II
1301 W. Grand Ave, Artesia, NM 88210
District III
1000 Rio Brazos Road, Aztec, NM 87410
District IV
1220 S. St Francis Dr, Santa Fe, NM
87505

State of New Mexico
Energy, Minerals and Natural Resources Department

Form C-107-B
Revised June 10, 2003

OIL CONSERVATION DIVISION

1220 S. St Francis Drive
Santa Fe, New Mexico 87505

Submit the original
application to the Santa Fe
office with one copy to the
appropriate District Office.

APPLICATION FOR SURFACE COMMINGLING (DIVERSE OWNERSHIP)

OPERATOR NAME: LIME ROCK RESOURCES II-A, L.P.

OPERATOR ADDRESS: C/o Mike Pippin LLC, 3104 N. Sullivan, Farmington, NM 87401

APPLICATION TYPE:

☐ Pool Commingling ☒ Lease Commingling ☐ Pool and Lease Commingling ☒ Off-Lease Storage and Measurement (Only if not Surface Commingled)

LEASE TYPE: ☐ Fee ☐ State ☒ Federal

Is this an Amendment to existing Order? ☒ Yes ☐ No If "Yes", please include the appropriate Order No. CTB-439

Have the Bureau of Land Management (BLM) and State Land office (SLO) been notified in writing of the proposed commingling
☒ Yes ☐ No

(A) POOL COMMINGLING

Please attach sheets with the following information

(1) Pool Names and Codes	Gravities / BTU of Non-Commingled Production	Calculated Gravities / BTU of Commingled Production		Calculated Value of Commingled Production	Volumes BOPD/MCF/ D/BWPD
Red Lake, Glorieta-Yeso 51120	35.8 / 1295	35.7 gravity			86 269 868
Red Lake, Queen-Grayburg-San Andres 51300	34.1 / 1197	1276 BTU			3 65 57

(2) Are any wells producing at top allowables? ☐ Yes ☒ No

(3) Has all interest owners been notified by certified mail of the proposed commingling? ☒ Yes ☐ No.

(4) Measurement type: ☒ Metering ☐ Other (Specify)

(5) Will commingling decrease the value of production? ☐ Yes ☒ No If "yes", describe why commingling should be approved

(B) LEASE COMMINGLING

Please attach sheets with the following information

(1) Pool Name and Code. Red Lake, Glorieta-Yeso 51120

(2) Is all production from same source of supply? ☐ Yes ☒ No

(3) Has all interest owners been notified by certified mail of the proposed commingling? ☒ Yes ☐ No

(4) Measurement type: ☒ Metering ☐ Other (Specify)

(C) POOL and LEASE COMMINGLING

Please attach sheets with the following information

(1) Complete Sections A and E.

(D) OFF-LEASE STORAGE and MEASUREMENT

Please attached sheets with the following information

(1) Is all production from same source of supply? ☐ Yes ☒ No

(2) Include proof of notice to all interest owners.

(E) ADDITIONAL INFORMATION (for all application types)

Please attach sheets with the following information

(1) A schematic diagram of facility, including legal location.

(2) A plat with lease boundaries showing all well and facility locations. Include lease numbers if Federal or State lands are involved.

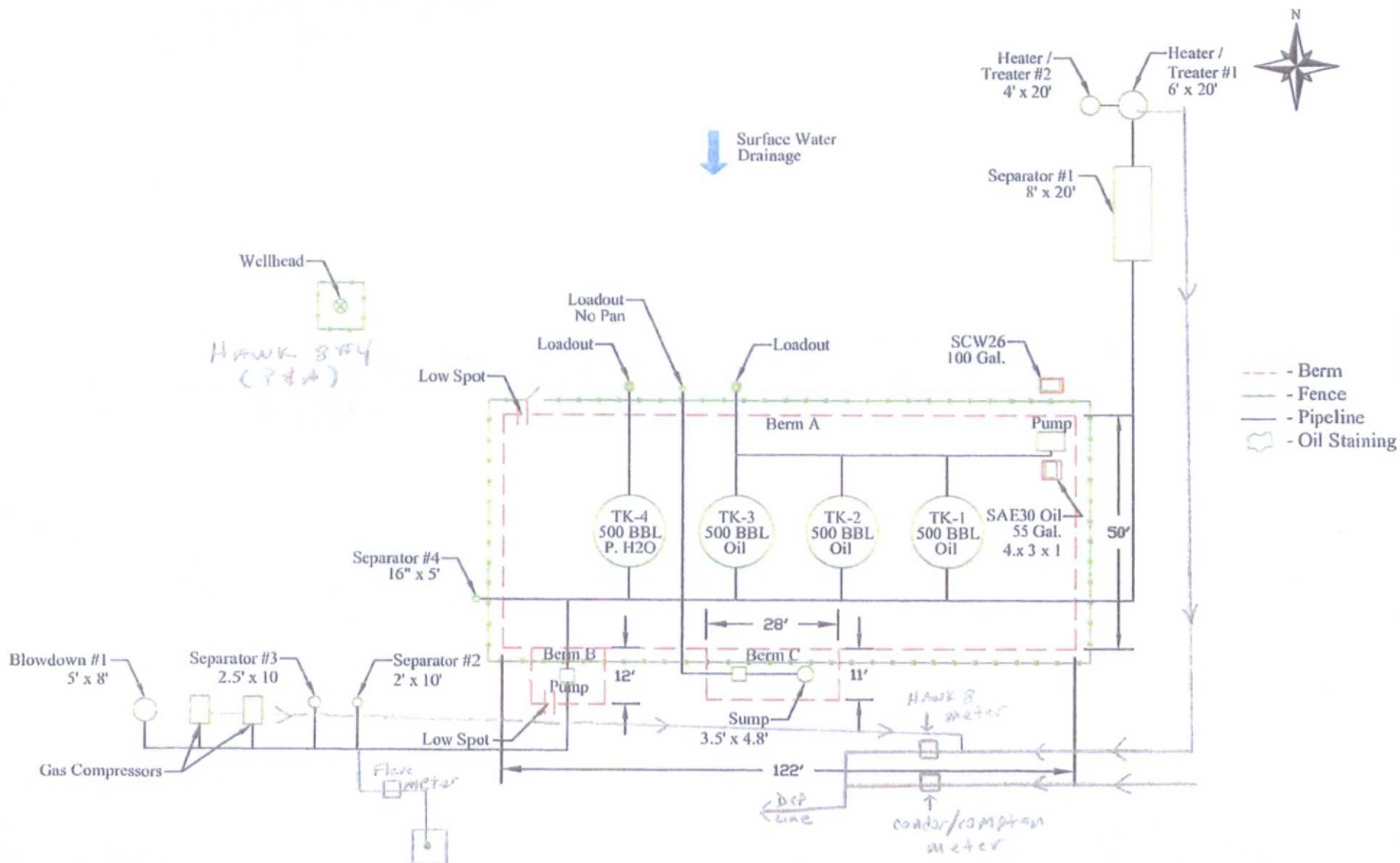
(3) Lease Names, Lease and Well Numbers, and API Numbers.

I hereby certify that the information above is true and complete to the best of my knowledge and belief.

SIGNATURE: _____ TITLE: Petroleum Engineer - Agent DATE: 7/15/16

TYPE OR PRINT NAME Mike Pippin TELEPHONE NO.: 505-327-4573

E-MAIL ADDRESS: mike@pippinllc.com



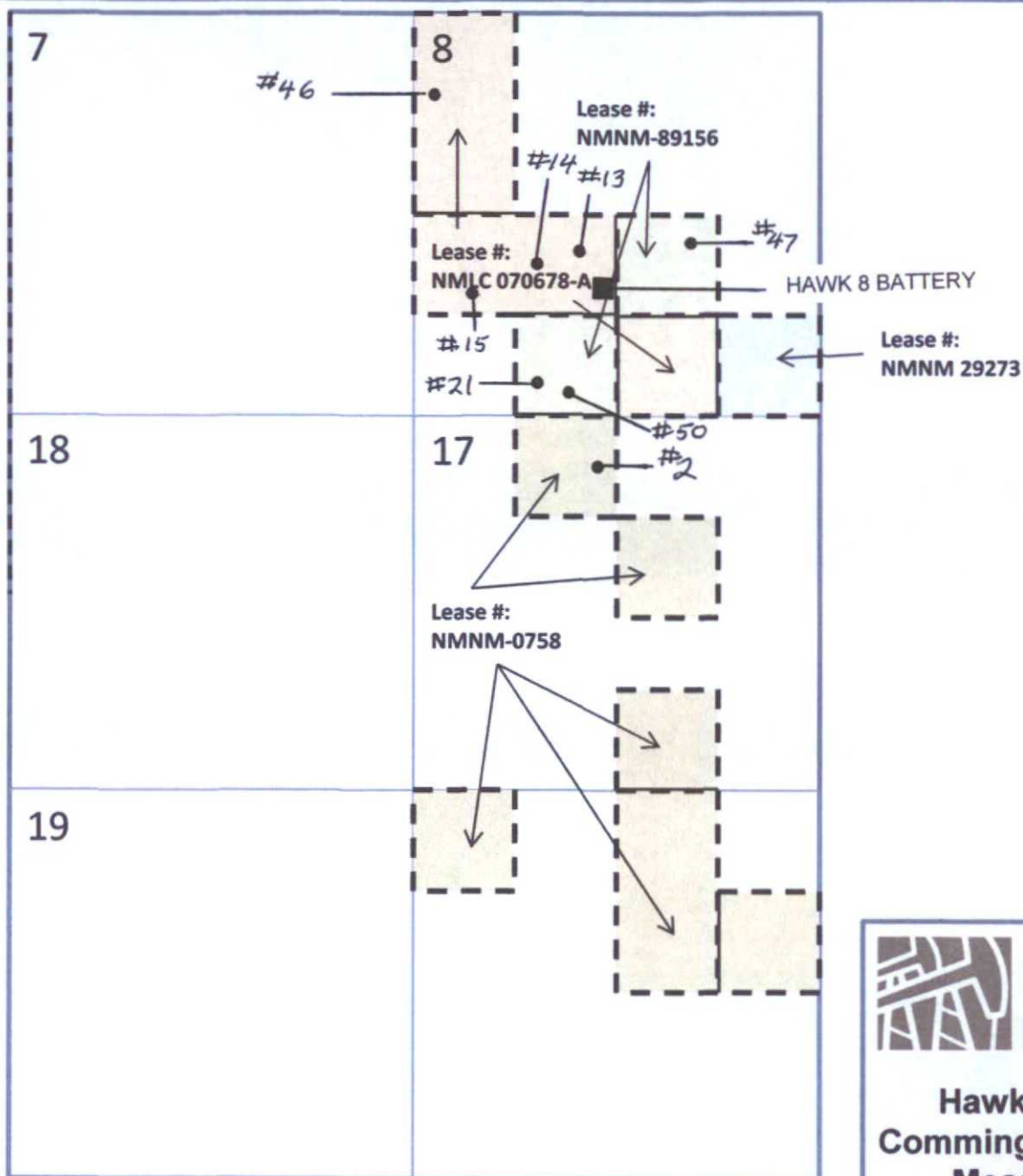
Date: 6-8-16

Scale: NTS

Drawn By: WBS

Hawk 8 Federal Tank Battery
Lime Rock Resources
Eddy County, New Mexico
SPCC Site Plan

T27S-R18E



Hawk 8 Federal
Commingled Oil & Gas
Measurement

LIST OF INTEREST OWNERS

FOR ADDITIONAL WELLS PRODUCING INTO HAWK 8 BATTERY & CTB-439

7/15/2016 - M. PIPPIN

Entity Name	Address_Line_One	Address_Line_Two	City	Stat	ZIP
AMERICAN CANCER SOCIETY	ATTN BILL M ROBERTS	P O BOX 720366	OKLAHOMA CITY	OK	73172
CHARLES R COLLINS	1404 FARRINGTON DRIVE		KNOXVILLE	TN	379230000
CHARLOTTE ANN PIER	4349 BELLAIRE DR S #129		FT WORTH	TX	76109-0000
CHARLOTTE COLEMAN	1304 GREAT OAK DR		PITTSBURG	PA	15220-0000
CHARLOTTE DAUGIRDA	3257 ROGERS AVE		FT WORTH	TX	76109-0000
CLAIRE COLLINS	3257 ROGERS AVE		FORT WORTH	TX	76109-0000
DEPT OF INTERIOR - MMS/ONRR	ONRR - OFC OF NAT RESOURCES REV	PO BOX 25627	DENVER	CO	80225
DONALD L CLARK	P O BOX 191407		DALLAS	TX	75219-1407
HTI RESOURCES, INC.	PO BOX 10690		SAVANNAH	GA	31412
JAMES HUBERT	3209 DUBLIN LN		LOUISVILLE	KY	40206-0000
JANE ANN HUDSON DAVIS	6770 WOLF CREEK COURT		RIO RANCHO	NM	87144
JOHN W HUBERT	2 OAK BEND DRIVE		ST LOUIS	MO	63124
JONEL SUSAN GRASSO	11 OCEAN RIDGE		LAGUNA NIGUEL	CA	92677
KATHRYN BEACH	2301 BENNETT RD		LAFAYETTE	IN	47909-0000
LAKEWIND LLC	DBA RIDGEROCKTX LLC	P O BOX 30304	EDMOND	OK	730030000
LINDA P CLARK SKINNER	4317 STANFORD		DALLAS	TX	75225-0000
M. CRAIG CLARK INC.	P O BOX 50635		MIDLAND	TX	797100635
MAP2004-OK AN OK GP	P O BOX 269031		OKLAHOMA CITY	OK	73126-9031
MARY LAUREN PIER	4213 SOUTH DR		FORT WORTH	TX	76109
MICHAEL DON DIXON	410 WANDERING WAY		ARDMORE	OK	73401-0000
ROBERT HUBERT	20218 N E 163RD STREET		WOODINVILLE	WA	98077
SILVERADO OIL & GAS LLP	P O BOX 52308		TULSA	OK	741520308
SUSAN LABUNSKI	970 S KENT AVE		ELMHURST	IL	60126
W I COOK FOUNDATION, INC.	BOKF, NA, AGENT	P.O. BOX 1588	TULSA	OK	74101-1588
WILLIAM H COLLINS	6542 NINE MILE AZLE ROAD		FORT WORTH	TX	76135-0000

LEGAL NOTICE

SURFACE COMMINGLE & OFF LEASE STORAGE AND MEASUREMENT

LIME ROCK RESOURCES II-A, L.P., 1111 Bagby Street, Suite 4600, Houston, TX 77002

(Contact: Mike Pippin 505-327-4573) is seeking administrative approval from the NMOCD to Surface Commingle oil & gas, from the following wells, at their Hawk 8 Battery facility (NESW Sec. 8 T18S R27E):

HAWK 8 N FEDERAL #21 – API#: 30-015-34964 - SWSW Sec 8 T18S R27E
HAWK 8 L FEDERAL #15 – API#: 30-015-39807 - NWSW Sec 8 T18S R27E
HAWK 8 K FEDERAL #14 – API#: 30-015-34366 - NWSE Sec 8 T18S R27E
HAWK 8 K FEDERAL #13 – API#: 30-015-34337 - NWSE Sec 8 T18S R27E
HAWK 8 J FEDERAL #47 – API#: 30-015-42835 - NESE Sec 8 T18S R27E
HAWK 8 D FEDERAL #46 – API#: 30-015-28301 - NWNW Sec 8 T18S R27E
HAWK 17 C FEDERAL #2 – API#: 30-015-29726 - NENW Sec 17 T18S R27E
HAWK 8 N FEDERAL #50 – API#: 30-015-43277 - SESW Sec 8 T18S R27E
(Not Drilled Yet)

The oil & gas from these wells will also be off lease stored and measured at the Hawk 8 Battery. These wells produce from the State pools, Red Lake, Glorieta-Yeso 51120 and Red Lake, Queen-Grayburg-San Andres 51300. Oil & gas from each well will be measured individually on a quarterly basis to obtain accurate oil & gas allocations. Interested parties must contact Mike Pippin or file objections or request for hearing with the NMODC, 1220 South St. Frances Drive, Santa Fe, NM 87505 within 20 days.

Published in the Artesia Daily Press, Artesia, N.M., July 19, 2016 Legal No. 24007.

LIME ROCK RESOURCES II-A, L.P.
Mike Pippin
3104 N. Sullivan Avenue
Farmington, NM 87401
505-327-4573 (phone) mike@pippinllc.com

July 18, 2016

RE: Application to Surface Commingle & Off Lease Storage & Measurement

HAWK 8 N FEDERAL #21 – API#: 30-015-34964 N Sec 8 T18S R27E
HAWK 8 L FEDERAL #15 – API#: 30-015-39807 L Sec 8 T18S R27E
HAWK 8 K FEDERAL #14 – API#: 30-015-34366 K Sec 8 T18S R27E
HAWK 8 K FEDERAL #13 – API#: 30-015-34337 K Sec 8 T18S R27E
HAWK 8 J FEDERAL #47 – API#: 30-015-42835 J Sec 8 T18S R27E
HAWK 8 D FEDERAL #46 – API#: 30-015-28301 D Sec 8 T18S R27E
HAWK 17 C FEDERAL #2 – API#: 30-015-29726 C Sec 17 T18S R27E
HAWK 8 N FEDERAL #50 – API#: 30-015-43277 N Sec 8 T18S R27E (Not Drilled Yet)
Eddy County, New Mexico

VIA CERTIFIED MAIL

To all Interest Owners:

In accordance with the New Mexico Oil Conservation Division Rule 19.15.12.10 governing surface commingling, you are hereby notified that LIME ROCK RESOURCES II-A, L.P., as operator of the above-referenced wells, has submitted an application to surface commingle the production from eight oil wells, which are located on three different Federal leases and producing from two State pools: Red Lake, Glorieta-Yeso (51120) and Red Lake, Queen-Grayburg-San Andres (51300). These wells will be an addition to State surface commingling order CTB-439, which was approved on 10/24/96. These wells have very marginal production except for one new well and one well not drilled yet. See the attached well list, which includes API number, Federal lease number, location, formation, & well tests.

The central tank battery is located on the Hawk 8 K Federal #4 well pad (K Sec 8 T18S R27E). Each of these wells will be tested separately through heater treater #2 on a quarterly basis to obtain oil & gas allocations. See the attached battery schematic.

This surface commingle of oil & gas and off lease storage and measurement of oil will maximize the ultimate recovery of oil & gas. Eliminating redundant surface equipment will prevent waste, reduce the environmental impact, and the premature P&A of many wells.

Should you have any questions or concerns, please contact me at 505-327-4573 and/or the NMOCD at 505-476-3467, 1220 South St. Frances Drive, Santa Fe, NM 87505 within 20 days after publication.

Best Regards,
LIME ROCK RESOURCES II-A, L.P.



Mike Pippin PE
Petroleum Engineer

Enclosures

U.S. Postal Service
CERTIFIED MAIL RECEIPT
(Domestic Mail Only; No Insurance Coverage Provided)

For delivery information visit our website at www.usps.com

MIDLAND, TX 79710

OFFICIAL USE

Postage	\$3.30	0401
Certified Fee	\$2.70	06
Return Receipt Fee (Endorsement Required)	\$0.00	
Restricted Delivery Fee (Endorsement Required)	\$0.00	
Total Postage & Fees	\$6.00	

Sent To: M. Craig Clark Inc.
Street, Apt. No., or PO Box No.: PO Box 50635
City, State, ZIP+4: Midland TX 79710-0635

PS Form 3800, August 2006 See Reverse for Instructions

U.S. Postal Service
CERTIFIED MAIL RECEIPT
(Domestic Mail Only; No Insurance Coverage Provided)

For delivery information visit our website at www.usps.com

DALLAS, TX 75225

OFFICIAL USE

Postage	\$3.30	0401
Certified Fee	\$2.70	06
Return Receipt Fee (Endorsement Required)	\$0.00	
Restricted Delivery Fee (Endorsement Required)	\$0.00	
Total Postage & Fees	\$6.00	

Sent To: Linda P. Clark Skinner
Street, Apt. No., or PO Box No.: 4317 Stanford
City, State, ZIP+4: Dallas TX 75225

PS Form 3800, August 2006 See Reverse for Instructions

U.S. Postal Service
CERTIFIED MAIL RECEIPT
(Domestic Mail Only; No Insurance Coverage Provided)

For delivery information visit our website at www.usps.com

EDMOND, OK 73003

OFFICIAL USE

Postage	\$3.30	0401
Certified Fee	\$2.70	06
Return Receipt Fee (Endorsement Required)	\$0.00	
Restricted Delivery Fee (Endorsement Required)	\$0.00	
Total Postage & Fees	\$6.00	

Sent To: Lakewind LLC DBA Ridgewood LLC
Street, Apt. No., or PO Box No.: PO Box 30304
City, State, ZIP+4: Edmond OK 73003

PS Form 3800, August 2006 See Reverse for Instructions

U.S. Postal Service
CERTIFIED MAIL RECEIPT
(Domestic Mail Only; No Insurance Coverage Provided)

For delivery information visit our website at www.usps.com

LAFAYETTE, IN 47909

OFFICIAL USE

Postage	\$3.30	0401
Certified Fee	\$2.70	06
Return Receipt Fee (Endorsement Required)	\$0.00	
Restricted Delivery Fee (Endorsement Required)	\$0.00	
Total Postage & Fees	\$6.00	

Sent To: Kathryn Beach
Street, Apt. No., or PO Box No.: 2301 Bennett Rd
City, State, ZIP+4: Lafayette IN 47909

PS Form 3800, August 2006 See Reverse for Instructions

U.S. Postal Service
CERTIFIED MAIL RECEIPT
(Domestic Mail Only; No Insurance Coverage Provided)

For delivery information visit our website at www.usps.com

LAGUNA NIGUELS, CA 92677

OFFICIAL USE

Postage	\$3.30	0401
Certified Fee	\$2.70	06
Return Receipt Fee (Endorsement Required)	\$0.00	
Restricted Delivery Fee (Endorsement Required)	\$0.00	
Total Postage & Fees	\$6.00	

Sent To: Jonel Susan Brasso
Street, Apt. No., or PO Box No.: 11 Ocean Ridge
City, State, ZIP+4: Laguna Niguel CA 92677

PS Form 3800, August 2006 See Reverse for Instructions

U.S. Postal Service
CERTIFIED MAIL RECEIPT
(Domestic Mail Only; No Insurance Coverage Provided)

For delivery information visit our website at www.usps.com

SAINT LOUIS, MO 63124

OFFICIAL USE

Postage	\$3.30	0401
Certified Fee	\$2.70	06
Return Receipt Fee (Endorsement Required)	\$0.00	
Restricted Delivery Fee (Endorsement Required)	\$0.00	
Total Postage & Fees	\$6.00	

Sent To: John W Hubert
Street, Apt. No., or PO Box No.: 2 Oak Bend Dr
City, State, ZIP+4: St. Louis MO 63124

PS Form 3800, August 2006 See Reverse for Instructions

CERTIFIED MAIL RECEIPT
(Domestic Mail Only; No Insurance Coverage Provided)

For delivery information visit our website at www.usps.com

RIO RANCHO NM 87144
OFFICIAL USE

Postage	\$3.30	0401
Certified Fee	\$2.70	06
Return Receipt Fee (Endorsement Required)	\$0.00	
Restricted Delivery Fee (Endorsement Required)	\$0.00	
Total Postage & Fees	\$6.47	

Postmark: FARMINGTON, NM 87401 JUL 18 2016 USPS

Sent To: *Jane Ann Hudson Davis*
Street, Apt. No., or PO Box No.: *6710 Wolf Creek Ct*
City, State, ZIP+4: *Bio Rancho NM 87144*

PS Form 3800, August 2006 See Reverse for Instructions

CERTIFIED MAIL RECEIPT
(Domestic Mail Only; No Insurance Coverage Provided)

For delivery information visit our website at www.usps.com

LOUISVILLE KY 40206
OFFICIAL USE

Postage	\$3.30	0401
Certified Fee	\$2.70	06
Return Receipt Fee (Endorsement Required)	\$0.00	
Restricted Delivery Fee (Endorsement Required)	\$0.00	
Total Postage & Fees	\$6.47	

Postmark: FARMINGTON, NM 87401 JUL 18 2016 USPS

Sent To: *James Hubert*
Street, Apt. No., or PO Box No.: *3209 Dublin Ln*
City, State, ZIP+4: *Louisville KY 40206*

PS Form 3800, August 2006 See Reverse for Instructions

U.S. Postal Service
CERTIFIED MAIL RECEIPT
(Domestic Mail Only; No Insurance Coverage Provided)

For delivery information visit our website at www.usps.com

SAVANNAH GA 31412
OFFICIAL USE

Postage	\$3.30	0401
Certified Fee	\$2.70	06
Return Receipt Fee (Endorsement Required)	\$0.00	
Restricted Delivery Fee (Endorsement Required)	\$0.00	
Total Postage & Fees	\$6.47	

Postmark: FARMINGTON, NM 87401 JUL 18 2016 USPS

Sent To: *HTI Resources Inc*
Street, Apt. No., or PO Box No.: *PO Box 10690*
City, State, ZIP+4: *Savannah GA 31412*

PS Form 3800, August 2006 See Reverse for Instructions

U.S. Postal Service
CERTIFIED MAIL RECEIPT
(Domestic Mail Only; No Insurance Coverage Provided)

For delivery information visit our website at www.usps.com

DALLAS TX 75219
OFFICIAL USE

Postage	\$3.30	0401
Certified Fee	\$2.70	06
Return Receipt Fee (Endorsement Required)	\$0.00	
Restricted Delivery Fee (Endorsement Required)	\$0.00	
Total Postage & Fees	\$6.47	

Postmark: FARMINGTON, NM 87401 JUL 18 2016 USPS

Sent To: *Donald L. Clark*
Street, Apt. No., or PO Box No.: *PO Box 191407*
City, State, ZIP+4: *Dallas TX 75219-1407*

PS Form 3800, August 2006 See Reverse for Instructions

U.S. Postal Service
CERTIFIED MAIL RECEIPT
(Domestic Mail Only; No Insurance Coverage Provided)

For delivery information visit our website at www.usps.com

DENVER CO 80225
OFFICIAL USE

Postage	\$3.30	0401
Certified Fee	\$2.70	06
Return Receipt Fee (Endorsement Required)	\$0.00	
Restricted Delivery Fee (Endorsement Required)	\$0.00	
Total Postage & Fees	\$6.47	

Postmark: FARMINGTON, NM 87401 JUL 18 2016 USPS

Sent To: *Dept. of Interior - MMS*
Street, Apt. No., or PO Box No.: *PO Box 25627*
City, State, ZIP+4: *Denver CO 80225*

PS Form 3800, August 2006 See Reverse for Instructions

U.S. Postal Service
CERTIFIED MAIL RECEIPT
(Domestic Mail Only; No Insurance Coverage Provided)

For delivery information visit our website at www.usps.com

FORT WORTH TX 76109
OFFICIAL USE

Postage	\$3.30	0401
Certified Fee	\$2.70	06
Return Receipt Fee (Endorsement Required)	\$0.00	
Restricted Delivery Fee (Endorsement Required)	\$0.00	
Total Postage & Fees	\$6.47	

Postmark: FARMINGTON, NM 87401 JUL 18 2016 USPS

Sent To: *Chair Collins*
Street, Apt. No., or PO Box No.: *3257 Rogers Ave*
City, State, ZIP+4: *Fort Worth TX 76109*

PS Form 3800, August 2006 See Reverse for Instructions

7011 1570 0001 0600 3561

U.S. Postal Service
CERTIFIED MAIL™ RECEIPT
 (Domestic Mail Only; No Insurance Coverage Provided)

For delivery information visit our website at www.usps.com

TULSA, OK 74101

OFFICIAL USE

Postage	\$2.70
Certified Fee	\$0.00
Return Receipt Fee (Endorsement Required)	\$0.00
Restricted Delivery Fee (Endorsement Required)	\$0.00
Total Postage & Fees	\$2.70

0401 06

Postmark
 JUL 18 2016
 FARMINGTON, NM 87401

Sent To: *Wicovk Foundation, Inc*
 Street, Apt. No., or PO Box No. *PO Box 1588*
 City, State, ZIP+4 *Tulsa OK 74101-1588*

PS Form 3800, August 2006 See Reverse for Instructions

5912 1640 0002 1005 3156

U.S. Postal Service
CERTIFIED MAIL™ RECEIPT
 (Domestic Mail Only; No Insurance Coverage Provided)

For delivery information visit our website at www.usps.com

TULSA, OK 74152

OFFICIAL USE

Postage	\$2.70
Certified Fee	\$0.00
Return Receipt Fee (Endorsement Required)	\$0.00
Restricted Delivery Fee (Endorsement Required)	\$0.00
Total Postage & Fees	\$2.70

0401 06

Postmark
 JUL 18 2016
 FARMINGTON, NM 87401

Sent To: *Silverado Oil & Gas Ltd*
 Street, Apt. No., or PO Box No. *PO Box 52308*
 City, State, ZIP+4 *Tulsa OK 74152*

PS Form 3800, August 2006 See Reverse for Instructions

7012 1640 0002 1005 3156

U.S. Postal Service
CERTIFIED MAIL™ RECEIPT
 (Domestic Mail Only; No Insurance Coverage Provided)

For delivery information visit our website at www.usps.com

WOODINVILLE, WA 98077

OFFICIAL USE

Postage	\$2.70
Certified Fee	\$0.00
Return Receipt Fee (Endorsement Required)	\$0.00
Restricted Delivery Fee (Endorsement Required)	\$0.00
Total Postage & Fees	\$2.70

0401 06

Postmark
 JUL 18 2016
 FARMINGTON, NM 87401

Sent To: *Robert Hubert*
 Street, Apt. No., or PO Box No. *20218 NE 163rd St*
 City, State, ZIP+4 *Woodinville WA 98077*

PS Form 3800, August 2006 See Reverse for Instructions

5912 1640 0002 1005 3156

U.S. Postal Service
CERTIFIED MAIL™ RECEIPT
 (Domestic Mail Only; No Insurance Coverage Provided)

For delivery information visit our website at www.usps.com

OKLAHOMA CITY, OK 73126

OFFICIAL USE

Postage	\$2.70
Certified Fee	\$0.00
Return Receipt Fee (Endorsement Required)	\$0.00
Restricted Delivery Fee (Endorsement Required)	\$0.00
Total Postage & Fees	\$2.70

0401 06

Postmark
 JUL 18 2016
 FARMINGTON, NM 87401

Sent To: *Map2004 OK AN OK GP*
 Street, Apt. No., or PO Box No. *PO Box 269031*
 City, State, ZIP+4 *Oklahoma City OK 73126-9031*

PS Form 3800, August 2006 See Reverse for Instructions

7012 1640 0002 1005 3156

U.S. Postal Service
CERTIFIED MAIL™ RECEIPT
 (Domestic Mail Only; No Insurance Coverage Provided)

For delivery information visit our website at www.usps.com

FORT WORTH, TX 76109

OFFICIAL USE

Postage	\$2.70
Certified Fee	\$0.00
Return Receipt Fee (Endorsement Required)	\$0.00
Restricted Delivery Fee (Endorsement Required)	\$0.00
Total Postage & Fees	\$2.70

0401 06

Postmark
 JUL 18 2016
 FARMINGTON, NM 87401

Sent To: *Mary Lauren Pien*
 Street, Apt. No., or PO Box No. *4213 South DN*
 City, State, ZIP+4 *Ft Worth TX 76109*

PS Form 3800, August 2006 See Reverse for Instructions

5912 1640 0002 1005 3156

U.S. Postal Service
CERTIFIED MAIL™ RECEIPT
 (Domestic Mail Only; No Insurance Coverage Provided)

For delivery information visit our website at www.usps.com

ARDMORE, OK 73401

OFFICIAL USE

Postage	\$2.70
Certified Fee	\$0.00
Return Receipt Fee (Endorsement Required)	\$0.00
Restricted Delivery Fee (Endorsement Required)	\$0.00
Total Postage & Fees	\$2.70

0401 06

Postmark
 JUL 18 2016
 FARMINGTON, NM 87401

Sent To: *Michael Don Dixon*
 Street, Apt. No., or PO Box No. *410 Wandering Way*
 City, State, ZIP+4 *Ardmore OK 73401*

PS Form 3800, August 2006 See Reverse for Instructions

7012 1570 0001 0600 3590

U.S. Postal Service
CERTIFIED MAIL RECEIPT
 (Domestic Mail Only; No Insurance Coverage Provided)

For delivery information visit our website at www.usps.com

OFFICIAL USE

Postage \$3.30
 Certified Fee \$2.70
 Return Receipt Fee (Endorsement Required) \$0.00
 Restricted Delivery Fee (Endorsement Required) \$0.00
 Total Postage & Fees \$6.47

Postmark Here JUL 18 2016 FARMINGTON, NM 87401

Sent To: William H. Collins
 Street, Apt. No., or PO Box No. 6542 Nine Mile Hwy Rd
 City, State, ZIP+4 Ft. Worth TX 76135

PS Form 3800, August 2006 See Reverse for Instructions

7012 1640 0002 1005 3172

U.S. Postal Service
CERTIFIED MAIL RECEIPT
 (Domestic Mail Only; No Insurance Coverage Provided)

For delivery information visit our website at www.usps.com

OFFICIAL USE

Postage \$3.30
 Certified Fee \$2.70
 Return Receipt Fee (Endorsement Required) \$0.00
 Restricted Delivery Fee (Endorsement Required) \$0.00
 Total Postage & Fees \$6.47

Postmark Here JUL 18 2016 FARMINGTON, NM 87401

Sent To: Susan Labunski
 Street, Apt. No., or PO Box No. 970 S. Kent Ave
 City, State, ZIP+4 Elmhurst IL 60126

PS Form 3800, August 2006 See Reverse for Instructions

7012 0470 0002 1197 0986

U.S. Postal Service
CERTIFIED MAIL RECEIPT
 (Domestic Mail Only; No Insurance Coverage Provided)

For delivery information visit our website at www.usps.com

OFFICIAL USE

Postage \$3.30
 Certified Fee \$2.70
 Return Receipt Fee (Endorsement Required) \$0.00
 Restricted Delivery Fee (Endorsement Required) \$0.00
 Total Postage & Fees \$6.47

Postmark Here JUL 18 2016 FARMINGTON, NM 87401

Sent To: American Cancer Society Bill Roberts
 Street, Apt. No., or PO Box No. PO Box 720366
 City, State, ZIP+4 Oklahoma City, OK 73162

PS Form 3800, August 2006 See Reverse for Instructions

7012 0470 0002 1197 0993

U.S. Postal Service
CERTIFIED MAIL RECEIPT
 (Domestic Mail Only; No Insurance Coverage Provided)

For delivery information visit our website at www.usps.com

OFFICIAL USE

Postage \$3.30
 Certified Fee \$2.70
 Return Receipt Fee (Endorsement Required) \$0.00
 Restricted Delivery Fee (Endorsement Required) \$0.00
 Total Postage & Fees \$6.63

Postmark Here JUL 18 2016 FARMINGTON, NM 87401

Sent To: Charles R. Collins
 Street, Apt. No., or PO Box No. 1404 Farmington Dr
 City, State, ZIP+4 Knoxville TN 37923

PS Form 3800, August 2006 See Reverse for Instructions

7012 0470 0002 1197 1006

U.S. Postal ServiceTM
CERTIFIED MAILTM RECEIPT
(Domestic Mail Only; No Insurance Coverage Provided)
For delivery information visit our website at www.usps.com
FORT WORTH TX 76109
OFFICIAL USE

Postage	\$3.50
Certified Fee	\$2.70
Return Receipt Fee (Endorsement Required)	\$0.00
Restricted Delivery Fee (Endorsement Required)	\$0.00
Total Postage & Fees	\$6.47

Sent To *Charlotte Ann Pien*
Street, Apt. No., or PO Box No. *4349 Beeline Dr S #129*
City, State, ZIP+4 *Fort Worth TX 76109*

PS Form 3800, August 2006 See Reverse for Instructions

0401
Postmark
JUL 18 2016
FARMINGTON, NM 87401
USPS

7012 0470 0002 1197 1020

U.S. Postal ServiceTM
CERTIFIED MAILTM RECEIPT
(Domestic Mail Only; No Insurance Coverage Provided)
For delivery information visit our website at www.usps.com
PITTSBURGH PA 15220
OFFICIAL USE

Postage	\$3.50
Certified Fee	\$2.70
Return Receipt Fee (Endorsement Required)	\$0.00
Restricted Delivery Fee (Endorsement Required)	\$0.00
Total Postage & Fees	\$6.47

Sent To *Charlotte Coleman*
Street, Apt. No., or PO Box No. *1304 Great Oak Dr*
City, State, ZIP+4 *Pittsburg PA 15220*

PS Form 3800, August 2006 See Reverse for Instructions

0401
Postmark
JUL 18 2016
FARMINGTON, NM 87401
USPS

7012 0470 0002 1197 1020

U.S. Postal ServiceTM
CERTIFIED MAILTM RECEIPT
(Domestic Mail Only; No Insurance Coverage Provided)
For delivery information visit our website at www.usps.com
FORT WORTH TX 76109
OFFICIAL USE

Postage	\$3.50
Certified Fee	\$2.70
Return Receipt Fee (Endorsement Required)	\$0.00
Restricted Delivery Fee (Endorsement Required)	\$0.00
Total Postage & Fees	\$6.47

Sent To *Charlotte Daugirda*
Street, Apt. No., or PO Box No. *3257 Rogers Ave*
City, State, ZIP+4 *Fort Worth TX 76109*

PS Form 3800, August 2006 See Reverse for Instructions

0401
Postmark
JUL 18 2016
FARMINGTON, NM 87401
USPS

District I
 1625 N. French Dr., Hobbs, NM 88240
 Phone: (505) 343-6161 Fax: (505) 343-0320
 District II
 111 S. First St., Aztec, NM 88010
 Phone: (505) 748-1283 Fax: (505) 748-0720
 District III
 1000 Rio Brazos Road, Aztec, NM 87410
 Phone: (505) 343-6178 Fax: (505) 343-6170
 District IV
 1220 S. St. Francis Dr., Santa Fe, NM 87505
 Phone: (505) 476-3460 Fax: (505) 476-3462

State of New Mexico
 Energy, Minerals & Natural Resources Department
OIL CONSERVATION DIVISION
 1220 South St. Francis Dr.
 Santa Fe, NM 87505

Form C-102
 Revised August 1, 2011
 Submit one copy to appropriate
 District Office

☐ AMENDED REPORT

WELL LOCATION AND ACREAGE DEDICATION PLAT

API Number 30-015-43277	Pool Code 51120	Pool Name Red Lake: Glorieta-Yeso
Property Code 309003	Property Name HAWK 8N FEDERAL	Well Number 50
GRID No. 277558	Operator Name LIME ROCK RESOURCES II-A, L.P.	Elevation 3432.8

10 Surface Location

U/L or lot no.	Section	Township	Range	Lot Idn	Feet from the	North/South line	Feet from the	East/West line	County
N	8	18 S	27 E		455	SOUTH	1980	WEST	EDDY

11 Bottom Hole Location If Different From Surface

U/L or lot no.	Section	Township	Range	Lot Idn	Feet from the	North/South line	Feet from the	East/West line	County
N	8	18 S	27 E		985	SOUTH	1650	WEST	EDDY

Dedicated Acres 40	Joint or Infill	Consolidation Code	Order No.
------------------------------	-----------------	--------------------	-----------

No allowable will be assigned to this completion until all interests have been consolidated or a non-standard unit has been approved by the division.

S89°56'24"E 2639.38 FT NW CORNER SEC. 8 LAT. = 32.7694355°N LONG. = 104.3086145°W		S89°56'25"E 2636.52 FT N/4 CORNER SEC. 8 LAT. = 32.7694258°N LONG. = 104.3000301°W		NE CORNER SEC. 8 LAT. = 32.7694156°N LONG. = 104.2914549°W	
NOTE: LATITUDE AND LONGITUDE COORDINATES ARE SHOWN USING THE NORTH AMERICAN DATUM OF 1927 (NAD27), AND ARE IN DECIMAL DEGREE FORMAT.					
W/4 CORNER SEC. 8 LAT. = 32.7621853°N LONG. = 104.3086274°W				E/4 CORNER SEC. 8 LAT. = 32.7622011°N LONG. = 104.2914990°W	
BOTTOM OF HOLE LAT. = 32.7576555°N LONG. = 104.3032688°W					
SURFACE LOCATION HAWK 8N FEDERAL #50 ELEV. = 3432.8' LAT. = 32.7562024°N (NAD27) LONG. = 104.3021983°W					
SW CORNER SEC. 8 LAT. = 32.7549310°N LONG. = 104.3086393°W		S/4 CORNER SEC. 8 LAT. = 32.7549588°N LONG. = 104.3000924°W		SE CORNER SEC. 8 LAT. = 32.7549860°N LONG. = 104.2915473°W	
S89°45'48"W 2628.29 FT				S89°45'50"W 2627.73 FT	

12 OPERATOR CERTIFICATION

I hereby certify that the information contained herein is true and complete to the best of my knowledge and belief, and that this organization either owns a working interest or undivided mineral interest in the land including the proposed bottom hole location or has a right to drill this well in this location pursuant to a contract with an owner of such a mineral or working interest or to a voluntary pooling agreement or a compulsory pooling order heretofore enacted by the division.

Signature: *Brian Wood* Date: 11-15-14

Printed Name: Brian Wood

E-mail Address: brian@permitswest.com

13 SURVEYOR CERTIFICATION

I hereby certify that the well location shown on this plat was plotted from field notes of actual surveys made by me or under my supervision, and that the same is true and correct to the best of my belief.

Date of Survey: JULY 28, 2011

Signature and Seal of Professional Surveyor: *[Signature]*

Certificate Number: FILMON P. JARAMILLO, PLS 12797

SURVEY NO. 1149

DISTRICT I
1625 N. French Dr., Hobbs, NM 88240

DISTRICT II
811 South First, Artesia, NM 88210

DISTRICT III
1000 Rio Grande Rd., Aztec, NM 87410

DISTRICT IV
2040 South Pacheco, Santa Fe, NM 87505

State of New Mexico
Energy, Minerals and Natural Resources Department

Form C-102
Revised March 17, 1999

Submit to Appropriate District Office
State Lease - 4 Copies
Fee Lease - 3 Copies

OIL CONSERVATION DIVISION

2040 South Pacheco
Santa Fe, New Mexico 87504-2088

☐ AMENDED REPORT

WELL LOCATION AND ACREAGE DEDICATION PLAT

API Number: 30-015-34964		Pool Code: 51130	Pool Name: Red Lake; Glorieta-Yeso
Property Code:	Property Name: HAWK "8N" FEDERAL		Well Number: 21
OGRID No.: 6137	Operator Name: DEVON ENERGY PRODUCTION CO., L.P.		Elevation: 3432'

Surface Location

UL or lot No.	Section	Township	Range	Lot Idn	Feet from the	North/South line	Feet from the	East/West line	County
N	8	18 S	27 E		330	SOUTH	1500	WEST	EDDY

Bottom Hole Location If Different From Surface

UL or lot No.	Section	Township	Range	Lot Idn	Feet from the	North/South line	Feet from the	East/West line	County
Dedicated Acres: 40	Joint or Infill	Consolidation Code	Order No.						

NO ALLOWABLE WILL BE ASSIGNED TO THIS COMPLETION UNTIL ALL INTERESTS HAVE BEEN CONSOLIDATED
OR A NON-STANDARD UNIT HAS BEEN APPROVED BY THE DIVISION

	<p>OPERATOR CERTIFICATION</p> <p>I hereby certify that the information contained herein is true and complete to the best of my knowledge and belief.</p> <p>Signature: <i>[Signature]</i></p> <p>Printed Name: Norvella Adams</p> <p>Title: Sr. Staff Eng. Tech.</p> <p>Date: May 5, 2005</p>
	<p>SURVEYOR CERTIFICATION</p> <p>I hereby certify that the well location shown on this plat was plotted from field notes of actual surveys made by me or under my supervision and that the same is true and correct to the best of my belief.</p> <p>Date Surveyed: MAY 13 2005</p> <p>Signature of Professional Surveyor: <i>[Signature]</i></p> <p>Certificate No. Gary L. Jones 7977</p> <p>Basin Surveys</p>

DISTRICT I
1625 N. FRENCH DR., HOBBS, NM 88240

DISTRICT II
1301 W. GRAND AVENUE, ARTESIA, NM 88210

DISTRICT III
1000 RIO BRAZOS RD., AZTEC, NM 87410

DISTRICT IV
11885 S. ST. FRANCIS DR., SANTA FE, NM 87505

State of New Mexico
Energy, Minerals & Natural Resources Department
OIL CONSERVATION DIVISION
1220 South St. Francis Dr.
Santa Fe, New Mexico 87505

Form C-102
Revised July 16, 2010
Submit to Appropriate
District Office

☐ AMENDED REPORT

WELL LOCATION AND ACREAGE DEDICATION PLAT

API Number 30-05-39807		Pool Code 51120	Pool Name Red Lake; Glorieta-Yeso
Property Code 309002	Property Name HAWK 8 L FEDERAL		Well Number 15
OGRID No. 277558	Operator Name LIME ROCK RESOURCES A, L.P.		Elevation 3398'

Surface Location

UL or lot No.	Section	Township	Range	Lot Ida	Feet from the	North/South line	Feet from the	East/West line	County
L	8	18-S	27-E		1650	SOUTH	680	WEST	EDDY

Bottom Hole Location If Different From Surface

UL or lot No.	Section	Township	Range	Lot Ida	Feet from the	North/South line	Feet from the	East/West line	County
Dedicated Acres 40		Joint or Infill		Consolidation Code		Order No.			

NO ALLOWABLE WILL BE ASSIGNED TO THIS COMPLETION UNTIL ALL INTERESTS HAVE BEEN CONSOLIDATED OR A NON-STANDARD UNIT HAS BEEN APPROVED BY THE DIVISION

<p>GEODETIC COORDINATES NAD 27 NME</p> <p>Y=640008.2 N X=508273.2 E</p> <p>LAT.=32.759473° N LONG.=104.306421° W</p> <p>DETAIL</p> <p>3386.4' 3399.8' 600' 3376.4' 3388.5'</p>	<p>OPERATOR CERTIFICATION</p> <p>I hereby certify that the information herein is true and complete to the best of my knowledge and belief, and that this organization either owns a working interest or unleased mineral interest in the land including the proposed bottom hole location or has a right to drill this well at this location pursuant to a contract with an owner of such mineral or working interest, or to a voluntary pooling agreement or a compulsory pooling order heretofore entered by the division.</p> <p><i>George R. Smith</i> 9/26/11 Signature Date</p> <p>George R. Smith POA agent Printed Name</p> <p>E-mail Address</p>
	<p>SURVEYOR CERTIFICATION</p> <p>I hereby certify that the well location shown on this plat was plotted from field notes of actual surveys made by me or under my supervision, and that the same is true and correct to the best of my belief.</p> <p>APRIL 21, 2011</p>
	<p>Date of Survey</p> <p>Signature & Seal of Professional Surveyor:</p> <p> RONALD J. EIDSON 3239</p> <p>Certificate Number: 12641 3239</p> <p>LA JWSC W.O.: 11.11.0823</p>

[Handwritten signature]

DISTRICT I
1625 N. French Dr., Hobbs, NM 88240

DISTRICT II
811 South First, Artesia, NM 88210

DISTRICT III
1000 Rio Grande Rd., Aztec, NM 87410

DISTRICT IV
2040 South Pacheco, Santa Fe, NM 87505

State of New Mexico
Energy, Minerals and Natural Resources Department

Form C-102
Revised March 17, 1989

Submit to Appropriate District Office
State Lease - 4 Copies
Fee Lease - 3 Copies

OIL CONSERVATION DIVISION

2040 South Pacheco
Santa Fe, New Mexico 87504-2088

☐ AMENDED REPORT

WELL LOCATION AND ACREAGE DEDICATION PLAT

API Number 30-05-34336	Pool Code S1120	Pool Name Red Lake; Glorieta Yeso
Property Code	Property Name HAWK "8K" FEDERAL	Well Number 14
OGRID No. 6137	Operator Name DEVON ENERGY PRODUCTION CO., L.P.	Elevation 3415'

Surface Location

UL or lot No.	Section	Township	Range	Lot Idn	Feet from the	North/South line	Feet from the	East/West line	County
K	8	18 S	27 E		1900	SOUTH	1650	WEST	EDDY

Bottom Hole Location If Different From Surface

UL or lot No.	Section	Township	Range	Lot Idn	Feet from the	North/South line	Feet from the	East/West line	County
Dedicated Acres 40	Joint or Infill	Consolidation Code	Order No.						

NO ALLOWABLE WILL BE ASSIGNED TO THIS COMPLETION UNTIL ALL INTERESTS HAVE BEEN CONSOLIDATED
OR A NON-STANDARD UNIT HAS BEEN APPROVED BY THE DIVISION

	<p>OPERATOR CERTIFICATION</p> <p>I hereby certify the the information contained herein is true and complete to the best of my knowledge and belief.</p> <p><i>Norvella Adams</i> Signature</p> <p>Norvella Adams Printed Name</p> <p>Sr. Staff Eng. Techl. Title</p> <p>August 4, 2005 Date</p>
	<p>SURVEYOR CERTIFICATION</p> <p>I hereby certify that the well location shown on this plat was plotted from field notes of actual surveys made by me or under my supervision and that the same is true and correct to the best of my belief.</p> <p>JULY 22, 2005</p>
	<p>Date Surveyed</p> <p>Signature & Seal of Professional Surveyor</p> <p><i>[Signature]</i></p> <p>W.O. No. 5630</p> <p>Certificate No. Gary L. Jones 7977</p> <p>BASIN SURVEYS</p>

DISTRICT I
1825 N. French Dr., Hobbs, NM 88240

DISTRICT II
811 South First, Artesia, NM 88210

DISTRICT III
1000 Rio Brazos Rd., Artesia, NM 87410

DISTRICT IV
2040 South Pacheco, Santa Fe, NM 87505

State of New Mexico
Energy, Minerals and Natural Resources Department

Form C-102
Revised March 17, 1999

Submit to Appropriate District Office
State Lease - 4 Copies
Fee Lease - 3 Copies

OIL CONSERVATION DIVISION

2040 South Pacheco
Santa Fe, New Mexico 87504-2088

☐ AMENDED REPORT

WELL LOCATION AND ACREAGE DEDICATION PLAT

API Number 30-015-34337	Pool Code S112c	Pool Name Red Lake; Glorieta Yeso
Property Code	Property Name HAWK "8K" FEDERAL	Well Number 13
OGRID No. 6137	Operator Name DEVON ENERGY PRODUCTION CO., L.P.	Elevation 3432'

Surface Location

UL or lot No.	Section	Township	Range	Lot Idn	Feet from the	North/South line	Feet from the	East/West line	County
K	8	18 S	27 E		2160	SOUTH	2210	WEST	EDDY

Bottom Hole Location If Different From Surface

UL or lot No.	Section	Township	Range	Lot Idn	Feet from the	North/South line	Feet from the	East/West line	County
Dedicated Acres 40	Joint or Infill	Consolidation Code	Order No.						

NO ALLOWABLE WILL BE ASSIGNED TO THIS COMPLETION UNTIL ALL INTERESTS HAVE BEEN CONSOLIDATED
OR A NON-STANDARD UNIT HAS BEEN APPROVED BY THE DIVISION

	<p>OPERATOR CERTIFICATION</p> <p>I hereby certify the information contained herein is true and complete to the best of my knowledge and belief.</p> <p><i>Norvella Adams</i></p> <p>Signature</p> <p>Norvella Adams</p> <p>Printed Name</p> <p>Sr. Staff Eng. Tech.</p> <p>Title</p> <p>August 4, 2005</p> <p>Date</p>
	<p>SURVEYOR CERTIFICATION</p> <p>I hereby certify that the well location shown on this plat was plotted from field notes of actual surveys made by me or under my supervision and that the same is true and correct to the best of my belief.</p> <p>JULY 22, 2005</p> <p>Date Surveyed</p> <p><i>Gary L. Jones</i></p> <p>Signature</p> <p>Professional Surveyor</p> <p>NEW MEXICO</p> <p>1977</p> <p>No. 5629</p> <p>Certified No. Gary L. Jones 7977</p> <p>PROFESSIONAL SURVEYOR</p>

District I
6225 N. French Dr., Hobbs, NM 88240
Phone: (575) 393-6161 Fax: (575) 393-0720
District II
511 S. First St., Artesia, NM 88210
Phone: (575) 749-1231 Fax: (575) 749-0220
District III
1000 Rio Brava Road, Aztec, NM 87410
Phone: (505) 334-6178 Fax: (505) 334-6170
District IV
1220 S. St. Francis Dr., Santa Fe, NM 87505
Phone: (505) 476-3460 Fax: (505) 476-3482

State of New Mexico
Energy, Minerals & Natural Resources Department
OIL CONSERVATION DIVISION
1220 South St. Francis Dr.
Santa Fe, NM 87505

Form C-102
Revised August 1, 2011
Submit one copy to appropriate
District Office

☐ AMENDED REPORT

WELL LOCATION AND ACREAGE DEDICATION PLAT

¹ API Number 30-015- 42835		² Pool Code 51120		³ Pool Name Red Lake; Glorieta-Yeso	
⁴ Property Code 309000		⁵ Property Name HAWK "8" J FEDERAL			⁶ Well Number 47
⁷ OGRID No. 277558		⁸ Operator Name LIME ROCK RESOURCES II-A, L.P.			⁹ Elevation 3469.5
¹⁰ Surface Location					
U/L or lot no. J	Section 8	Township 18 S	Range 27 E	Lot Ida 2300	Feet from the SOUTH
		Feet from the 1700		East/West line EAST	County EDDY
¹¹ Bottom Hole Location If Different From Surface					
U/L or lot no.	Section	Township	Range	Lot Ida	Feet from the
		North/South line		Feet from the	East/West line
		County			
¹² Dedicated Acres 40		¹³ Joint or Infill		¹⁴ Consolidation Code	
				¹⁵ Order No.	

No allowable will be assigned to this completion until all interests have been consolidated or a non-standard unit has been approved by the division.

N89°56'24"W 2639.38 FT		N89°56'25"W 2636.52 FT	
NW CORNER SEC. 8 LAT. = 32.7694355°N LONG. = 104.3086145°W	N/4 CORNER SEC. 8 LAT. = 32.7694258°N LONG. = 104.3000301°W	NE CORNER SEC. 8 LAT. = 32.7694156°N LONG. = 104.2914549°W	
W/4 CORNER SEC. 8 LAT. = 32.7621853°N LONG. = 104.3086274°W	<p>HAWK "8" J FEDERAL #47 ELEV. = 3469.5' LAT. = 32.7612891°N (NAD27) LONG. = 104.2970501°W</p> <p>SURFACE LOCATION</p>		E/4 CORNER SEC. 8 LAT. = 32.7622011°N LONG. = 104.2914990°W
SW CORNER SEC. 8 LAT. = 32.7549310°N LONG. = 104.3086393°W	S/4 CORNER SEC. 8 LAT. = 32.7549588°N LONG. = 104.3000924°W	SE CORNER SEC. 8 LAT. = 32.7549860°N LONG. = 104.2915473°W	
N89°45'48"E 2628.29 FT	N89°45'50"E 2627.73 FT		
<p>NOTE: LATITUDE AND LONGITUDE COORDINATES ARE SHOWN USING THE NORTH AMERICAN DATUM OF 1927 (NAD27), AND ARE IN DECIMAL DEGREE FORMAT.</p>			

" OPERATOR CERTIFICATION
I hereby certify that the information contained herein is true and complete to the best of my knowledge and belief, and that this organization either owns a working interest or holds mineral interest in the land including the proposed bottom hole location or has a right to drill this well at this location pursuant to a contract with an owner of such a mineral or working interest, or to a voluntary pooling agreement or a compulsory pooling order heretofore entered by the division.

Signature: *Brian Wood* Date: 4-19-14

Printed Name: Brian Wood

brian@permitswest.com

"SURVEYOR CERTIFICATION
I hereby certify that the well location shown on this plat was plotted from field notes of actual surveys made by me or under my supervision, and that the same is true and correct to the best of my belief.

JANUARY 28, 2013

Date of Survey: *4-19-14*

Signature and Seal of Professional Surveyor: *[Signature]*

Certificate Number: *1094A*

SURVEY NO. 1094A

DISTRICT I
P.O. Box 1980, Hobbs, NM 88240

DISTRICT II
P.O. Drawer DD, Artesia, NM 88210

DISTRICT III
1000 Elie Brazos Rd., Aztec, NM 87410

State of New Mexico
Energy, Minerals and Natural Resources Department

Form C-102
Revised February 10, 1994
Instruction on back
Submit to Appropriate District Office
State Lease - 4 Copies
Fee Lease - 3 Copies

OIL CONSERVATION DIVISION

P.O. Box 2088
Santa Fe, New Mexico 87504-2088

☐ AMENDED REPORT

WELL LOCATION AND ACREAGE DEDICATION PLAT

APT Number 30-015-28301	Pool Code	Pool Name Red Lake; Q-GB-SA 51300
Property Code	Property Name WEST RED LAKE UNIT	Well Number 46
OGED No. 6137	Operator Name DEVON ENERGY	Elevation 3397'

Surface Location

UL or lot No.	Section	Township	Range	Lot Idn	Feet from the	North/South line	Feet from the	East/West line	County
D	8	18 S	27 E		1090	NORTH	280	WEST	EDDY

Bottom Hole Location If Different From Surface

UL or lot No.	Section	Township	Range	Lot Idn	Feet from the	North/South line	Feet from the	East/West line	County

Dedicated Acres	Joint or Infill	Consolidation Code	Order No.
40			

NO ALLOWABLE WILL BE ASSIGNED TO THIS COMPLETION UNTIL ALL INTERESTS HAVE BEEN CONSOLIDATED
OR A NON-STANDARD UNIT HAS BEEN APPROVED BY THE DIVISION

				OPERATOR CERTIFICATION I hereby certify that the information contained herein is true and complete to the best of my knowledge and belief. Signature E. L. Buttross, JR. Printed Name District Engineer Title 11/17/94 Date	
				SURVEYOR CERTIFICATION I hereby certify that the well location shown on this plat was plotted from field notes of actual surveys made by me or under my supervision, and that the same are true and correct. Date NO. Signature & Seal of Professional Surveyor W.O. No. 1723	
				Certificate No. JOHN W. WEST, 676 RONALD J. EIDSON, 3239	

DISTRICT I
P.O. Box 1981, Hobbs, NM 88240

State of New Mexico
Energy, Minerals and Natural Resources Department

Form C-102
Revised February 10, 1994
Instruction on back
Submit to Appropriate District Office
State Lease - 4 Copies
Fee Lease - 3 Copies

DISTRICT II
P.O. Drawer DD, Artesia, NM 88210

OIL CONSERVATION DIVISION

DISTRICT III
1000 Rio Brator Rd., Aztec, NM 87410

P.O. Box 2088
Santa Fe, New Mexico 87504-2088

☐ AMENDED REPORT

WELL LOCATION AND ACREAGE DEDICATION PLAT

API Number 015-29720	Pool Code	Pool Name Red Lake (Q-GB-SA)
Property Code	Property Name Hawk "17" C Federal	Well Number 2
OGRID No.	Operator Name Devon Energy Corporation	Elevation 3383'

Surface Location

UL or lot No.	Section	Township	Range	Lot Idn	Feet from the	North/South line	Feet from the	East/West line	County
C	17	18 S	27 E		890	North	2585	West	Eddy

Bottom Hole Location If Different From Surface

UL or lot No.	Section	Township	Range	Lot Idn	Feet from the	North/South line	Feet from the	East/West line	County
Dedicated Acres	Joint or Infill	Consolidation Code	Order No.						

NO ALLOWABLE WILL BE ASSIGNED TO THIS COMPLETION UNTIL ALL INTERESTS HAVE BEEN CONSOLIDATED
OR A NON-STANDARD UNIT HAS BEEN APPROVED BY THE DIVISION

	OPERATOR CERTIFICATION I hereby certify that the information contained herein is true and complete to the best of my knowledge and belief. <u>E. L. Buttross Jr.</u> Signature E. L. Buttross, Jr. Printed Name District Engineer Title June 3, 1997 Date
	SURVEYOR CERTIFICATION I hereby certify that the well location, shown on this plat was plotted from field notes of actual surveys made by me or under my supervision and that the same is true and correct to the best of my belief. May 17, 1997 Date Surveyed
	Signature & Seal of Professional Surveyor
	W.O. No. 702206 Certificate No. Gary L. Jones 7977 BASIN SURVEYS

McMillan, Michael, EMNRD

From: Mike Pippin <mike@pippinllc.com>
Sent: Tuesday, August 09, 2016 9:44 AM
To: McMillan, Michael, EMNRD
Subject: RE: Lime Rock Hawk 8 Federal surface commingle application received July 20, 2016

I believe that a BLM inspector has demanded that Lime Rock apply for surface commingling & OLM/OLS for this battery. I recommended to Lime Rock that we bring the battery into compliance for both the BLM & the State, which is what I'm attempting to do. I have observed that Lime Rock does try to be in compliance with both governments. Unfortunately, Lime Rock bought these problems when it purchased the wells from Devon a few years ago. I'm afraid that there will be more of these in the future. I hope this answers your question about a "records clean-up". If it doesn't, please call me at 505-327-4573.

From: McMillan, Michael, EMNRD [mailto:Michael.McMillan@state.nm.us]
Sent: Tuesday, August 9, 2016 9:29 AM
To: Mike Pippin <mike@pippinllc.com>
Subject: RE: Lime Rock Hawk 8 Federal surface commingle application received July 20, 2016

Is this a records clean-up? The 20-day wait ends today
Mike

From: Mike Pippin [mailto:mike@pippinllc.com]
Sent: Thursday, July 21, 2016 3:18 PM
To: McMillan, Michael, EMNRD
Subject: RE: Lime Rock Hawk 8 Federal surface commingle application received July 20, 2016

Yes, please.

From: McMillan, Michael, EMNRD [mailto:Michael.McMillan@state.nm.us]
Sent: Thursday, July 21, 2016 1:57 PM
To: Mike Pippin <mike@pippinllc.com>
Subject: RE: Lime Rock Hawk 8 Federal surface commingle application received July 20, 2016

Mike:
A few of the wells have no production, does Lime Rock still want them to be included in the application?

From: Mike Pippin [mailto:mike@pippinllc.com]
Sent: Thursday, July 21, 2016 11:03 AM
To: McMillan, Michael, EMNRD
Subject: RE: Lime Rock Hawk 8 Federal surface commingle application received July 20, 2016

As requested, I have attached a list of the cumulatives and 6 months production for each of the 7 currently producing wells Lime Rock would like to add to CTB-439. I am working with the field to obtain a Hawk 8 Battery schematic that is 11"x17".