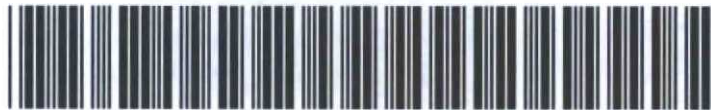




# AE Order Number Banner

## Report Description

This report shows an AE Order Number in Barcode format for purposes of scanning. The Barcode format is Code 39.



**App Number:** pGRL1311953585

**1RP - 2912**

**SIANA OPERATING LLC**

**From:** Marissa Darvis <marissa@sportenvironmental.com>  
**Sent:** Thursday, May 30, 2013 2:48 PM  
**To:** rpair@blm.gov; Leking, Geoffrey R, EMNRD  
**Cc:** Debi Moore  
**Subject:** Excavation Round 2 Work Plan  
**Attachments:** Siana Flags 5-14-13 4.jpg; Excavation Round 1 Sampling Data 5-7-13.xlsx

MAY 30 2013

RECEIVED

All,

Attached are the sampling results and sampling map from the May 17<sup>th</sup>, 2013 Excavation Round 1 sampling event. The areas that still need to be addressed are PP2, PP4, SP1 and SP2. We would like to begin the second excavation round on Monday June 3 or Tuesday June 4. Please let me know what day works best and if you would like to meet me on site that morning. I will be meeting Sundance in the morning to flag the additional areas to be excavated.

Below is a breakdown of the Excavation Round 2 work plan.

**Area PP2** – The North Wall, South Wall and West Wall all had chloride concentrations greater than 1,000 ppm. Each of these walls will be expanded an additional 4 feet to hopefully catch the remaining chloride contamination. Approximate Additional Yardage = 14 yd<sup>3</sup>

**Area PP4** – The Excavation Floor, North Wall and East Wall all had chloride concentrations greater than 1,000ppm. Excavate the walls first to expand these walls an additional 4 feet. Then excavate the entire Excavation Floor to 2 feet below the ground surface. Approximate Additional Yardage = 91 yd<sup>3</sup>

**Area SP1** – The Excavation Floor, North Wall, East Wall, South Wall and West Wall all had chloride concentrations greater than 1,000ppm. Excavate the walls first to expand these walls an additional 4 feet. Then excavate the entire Excavation Floor to 2 feet below the ground surface. Approximate Additional Yardage = 54 yd<sup>3</sup>

**Area SP2** – The Excavation Floor, North Wall, East Wall, South Wall and West Wall all had chloride concentrations greater than 1,000ppm. Excavate the all the walls first to expand these walls an additional 4 feet. Then excavate the entire Excavation Floor to 2 feet below the ground surface. Approximate Additional Yardage = 41 yd<sup>3</sup>

Let me know if you have any questions or concerns! Please let me know if a more formal report is needed. Thanks



**MARISSA DARVIS**

*Environmental Coordinator*

Sport Environmental Services, PLLC  
502 North Big Spring Street  
Midland, Texas 79701  
marissa@sportenvironmental.com  
Business: 432.683.1100  
Fax: 888.500.0622  
Cell: 432.770.9818

**CONFIDENTIALITY NOTICE:** This message (including attachments) is subject as a confidential communication and is intended solely for the use of the addressee. It is not intended for transmission to, or receipt by, any unauthorized person. If you are not the intended recipient or received these documents by mistake, please contact the sender by return e-mail. If you are not the intended recipient, you are hereby notified that any disclosure, copying, distribution, action or reliance upon the contents of the documents is strictly prohibited.



Please consider the environment before printing this e-mail.

MAY 20 2013



Client - Siana Oil & Gas  
Project Name - Curry Federal #2 SWD Release - E

RECEIVED

Excavation Area ID	Excavation Dimensions	Sample ID	Sample Date	Sample Time
PP2	30' X 31'	PP2EF-001	5/17/2013	12:01
		PP2WNorth-001	5/17/2013	12:05
		PP2WEast-001	5/17/2013	12:08
		PP2WSouth-001	5/17/2013	12:12
		PP2WWest-001	5/17/2013	12:15
PP4	49' X 36'	PP4EF-001	5/17/2013	12:25
		PP4WNorth-001	5/17/2013	12:30
		PP4WEast-001	5/17/2013	12:38
		PP4WSouth-001	5/17/2013	12:36
		PP4WWest-001	5/17/2013	12:32
SP1	29' X 22'	SP1EF-001	5/17/2013	12:50
		SP1WNorth-001	5/17/2013	12:57
		SP1WEast-001	5/17/2013	1:02
		SP1WSouth-001	5/17/2013	1:04
		SP1WWest-001	5/17/2013	12:55
SP2	17' X 25'	SP2EF-001	5/17/2013	1:12
		SP2WNorth-001	5/17/2013	1:16
		SP2WEast-001	5/17/2013	1:21
		SP2WSouth-001	5/17/2013	1:18
		SP2WWest-001	5/17/2013	1:25
SP2B	10' X 20'	SP2B EF-001	5/17/2013	1:33
		SP2B WNorth-001	5/17/2013	1:36
		SP2B WEast-001	5/17/2013	1:45
		SP2B WSouth-001	5/17/2013	1:42
		SP2B WWest-001	5/17/2013	1:39
SP9	18' X 38'	SP9 EF-001	5/17/2013	1:54
		SP9 WNorth-001	5/17/2013	1:59
		SP9 WEast-001	5/17/2013	2:03
		SP9 WSouth-001	5/17/2013	2:06
		SP9 WWest-001	5/17/2013	2:09

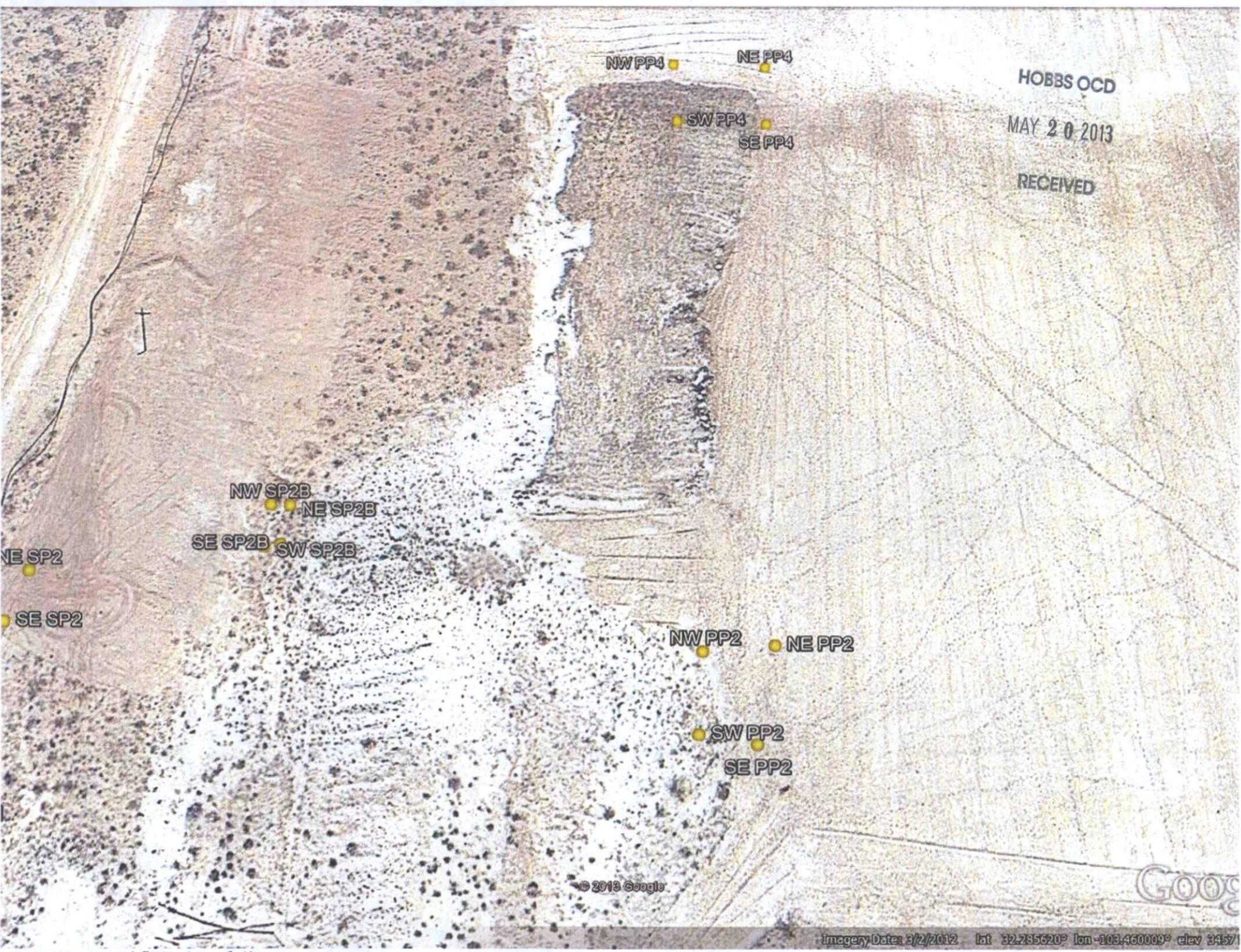
HOBBS OCD

MAY 20 2013

RECEIVED

## Excavation Confirmation Sampling Round 1

Sample Description
5pt Composite Sample collected on the excavation floor
3 pt Composite Sample collected on the North excavation wall
3 pt Composite Sample collected on the East excavation wall
3 pt Composite Sample collected on the South excavation wall
3 pt Composite Sample collected on the West excavation wall
5pt Composite Sample collected on the excavation floor
3 pt Composite Sample collected on the North excavation wall
3 pt Composite Sample collected on the East excavation wall
3 pt Composite Sample collected on the South excavation wall
3 pt Composite Sample collected on the West excavation wall
5pt Composite Sample collected on the excavation floor
3 pt Composite Sample collected on the North excavation wall
3 pt Composite Sample collected on the East excavation wall
3 pt Composite Sample collected on the South excavation wall
3 pt Composite Sample collected on the West excavation wall
5pt Composite Sample collected on the excavation floor
2 pt Composite Sample collected on the North excavation wall
3 pt Composite Sample collected on the East excavation wall
3 pt Composite Sample collected on the South excavation wall
2 pt Composite Sample collected on the West excavation wall
5pt Composite Sample collected on the excavation floor
2 pt Composite Sample collected on the North excavation wall
2 pt Composite Sample collected on the East excavation wall
2 pt Composite Sample collected on the South excavation wall
2 pt Composite Sample collected on the West excavation wall
5pt Composite Sample collected on the excavation floor
3 pt Composite Sample collected on the North excavation wall
3 pt Composite Sample collected on the East excavation wall
3 pt Composite Sample collected on the South excavation wall
3 pt Composite Sample collected on the West excavation wall



HOBBS OCD

MAY 20 2013

RECEIVED

NW PP4

NE PP4

SW PP4

SE PP4

NW SP2B

NE SP2B

SE SP2B

SW SP2B

NE SP2

SE SP2

NW PP2

NE PP2

SW PP2

SE PP2

© 2013 Google

Google

Imagery Date: 3/2/2012 lat 32.285620° lon -103.460009° elev 3457

SIANA CURRY FED #2 SWD

NW SP9 NE SP9  
SW SP9 SE SP9

CLEAN

HOLLY OGD

MAY 20 2013

RECEIVED

NW PP4 NE PP4  
SW PP4 SE PP4

JUST  
FLOOR  
1460  
1270

WANTED  
250  
DRILL

NW SP2B NE SP2B  
SW SP2B SE SP2B  
NW PP2 NE PP2  
SW PP2 SE PP2  
SW SP1 SE SP1  
NE SP1

CLEAN

9/5/13

DRILL

WANTED  
250  
DRILL

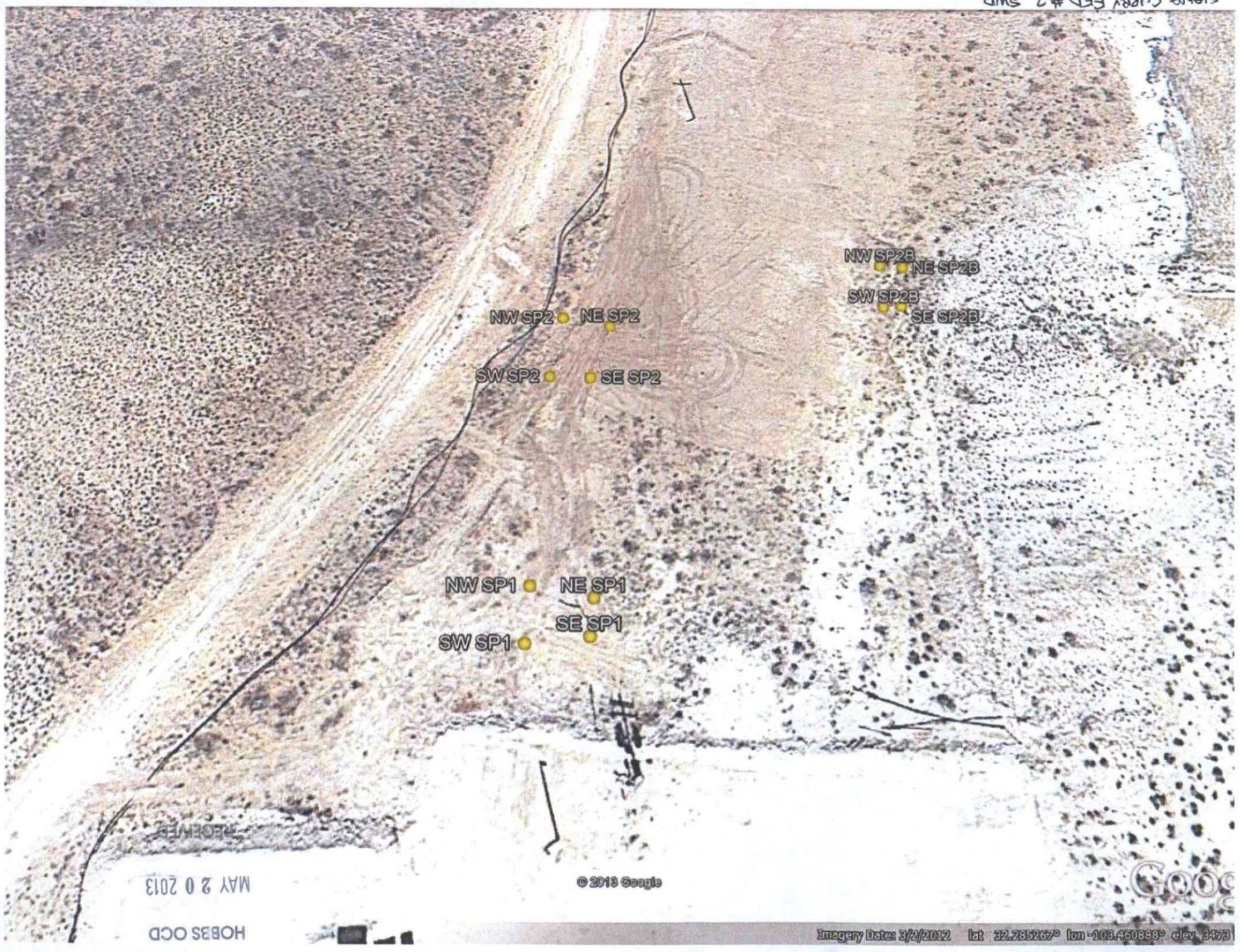
© 2013 Google

E-21

Google

Imagery Date: 3/2/2012 lat 32.286380° lon -101.460519° elev 3454

SIANA CURRY FED # SWD



MAY 20 2013

HOBBS OCD

© 2013 Google

Imagery Date: 3/2/2012 lat 32.235267° lon -103.460838° elev 3473

SANTA CECILIA #2 SWD

NW SP9 NE SP9  
SW SP9 SE SP9

HOBBS OCD

MAY 30 2013

RECEIVED

NW PP4 NE PP4  
SW PP4 SE PP4

NW SP2B NE SP2 SW SP2B NW PP2 NE PP2  
SW SP2 SE SP2 SW PP2 SE PP2  
SE SP1 NE SP1

© 2013 Google

E-21

Imagery Date: 3/2/2012 lat: 32.286380° lon: -103.460519° elev: 3454

SIANA CURRY FED #2 SWD 5/30/13

MAY 30 2013

RECEIVED



Client - Siana Oil & Gas  
 Project Name - Curry Federal #2 SWD Release - Excavation Confirmation Sampling Round 1

Excavation Area ID	Excavation Dimensions	Sample ID	Sample Date	Sample Time	Sample Description	Chloride ppm
PP2	30' X 31'	PP2EF-001	5/17/2013	12:01	5pt Composite Sample collected on the excavation floor	717
		PP2WNorth-001	5/17/2013	12:05	3 pt Composite Sample collected on the North excavation wall	2470
		PP2WEast-001	5/17/2013	12:08	3 pt Composite Sample collected on the East excavation wall	669
		PP2WSouth-001	5/17/2013	12:12	3 pt Composite Sample collected on the South excavation wall	2250
		PP2WWest-001	5/17/2013	12:15	3 pt Composite Sample collected on the West excavation wall	1790
PP4	49' X 36'	PP4EF-001	5/17/2013	12:25	5pt Composite Sample collected on the excavation floor	1460
		PP4WNorth-001	5/17/2013	12:30	3 pt Composite Sample collected on the North excavation wall	1040
		PP4WEast-001	5/17/2013	12:38	3 pt Composite Sample collected on the East excavation wall	1070
		PP4WSouth-001	5/17/2013	12:36	3 pt Composite Sample collected on the South excavation wall	110
		PP4WWest-001	5/17/2013	12:32	3 pt Composite Sample collected on the West excavation wall	320
SP1	29' X 22'	SP1EF-001	5/17/2013	12:50	5pt Composite Sample collected on the excavation floor	4810
		SP1WNorth-001	5/17/2013	12:57	3 pt Composite Sample collected on the North excavation wall	4750
		SP1WEast-001	5/17/2013	1:02	3 pt Composite Sample collected on the East excavation wall	2280
		SP1WSouth-001	5/17/2013	1:04	3 pt Composite Sample collected on the South excavation wall	2230
		SP1WWest-001	5/17/2013	12:55	3 pt Composite Sample collected on the West excavation wall	2150
SP2	17' X 25'	SP2EF-001	5/17/2013	1:12	5pt Composite Sample collected on the excavation floor	4700
		SP2WNorth-001	5/17/2013	1:16	2 pt Composite Sample collected on the North excavation wall	2090
		SP2WEast-001	5/17/2013	1:21	3 pt Composite Sample collected on the East excavation wall	3020
		SP2WSouth-001	5/17/2013	1:18	3 pt Composite Sample collected on the South excavation wall	2380
		SP2WWest-001	5/17/2013	1:25	2 pt Composite Sample collected on the West excavation wall	2050
SP2B	10' X 20'	SP2B EF-001	5/17/2013	1:33	5pt Composite Sample collected on the excavation floor	811
		SP2B WNorth-001	5/17/2013	1:36	2 pt Composite Sample collected on the North excavation wall	330
		SP2B WEast-001	5/17/2013	1:45	2 pt Composite Sample collected on the East excavation wall	112
		SP2B WSouth-001	5/17/2013	1:42	2 pt Composite Sample collected on the South excavation wall	417
		SP2B WWest-001	5/17/2013	1:39	2 pt Composite Sample collected on the West excavation wall	229
SP9	18' X 38'	SP9 EF-001	5/17/2013	1:54	5pt Composite Sample collected on the excavation floor	891
		SP9 WNorth-001	5/17/2013	1:59	3 pt Composite Sample collected on the North excavation wall	265
		SP9 WEast-001	5/17/2013	2:03	3 pt Composite Sample collected on the East excavation wall	316
		SP9 WSouth-001	5/17/2013	2:06	3 pt Composite Sample collected on the South excavation wall	707
		SP9 WWest-001	5/17/2013	2:09	3 pt Composite Sample collected on the West excavation wall	570

HOBBS OCD

MAY 20 2013

RECEIVED

NW SP9 NE SP9  
SW SP9 SE SP9

© 2013 Google

Goog

Imagery Date: 3/2/2012 lat 32.288123° lon -103.460732° elev 3439

SIANA CURRY FED #2 SNO