



AE Order Number Banner

Report Description

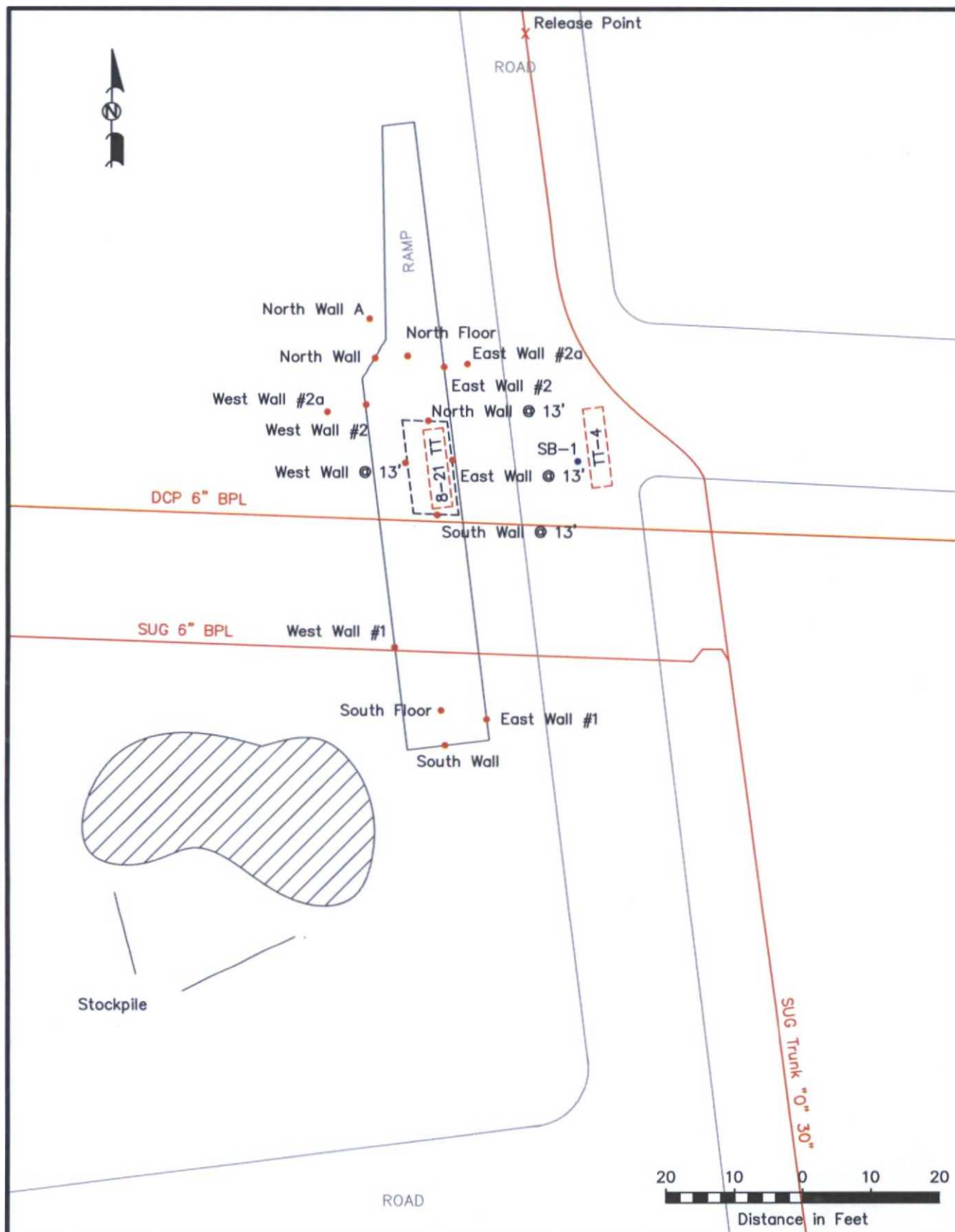
This report shows an AE Order Number in Barcode format for purposes of scanning. The Barcode format is Code 39.



App Number: pPAC0722130726

1RP - 1523

SOUTHERN UNION GAS COMPANY



LEGEND:

- Inferred Flowpath
- Pipeline
- Road
- Sample Location
- Soil Boring
- Stockpile

Figure 2

Site & Sample Location Map
Southern Union Gas Services
Trunk "O" #5 (1RP-1523)
Lea County, NM

Basin Environmental Services

Scale: 1" = 30'

Drawn By: JWL

Prepared By: BRB

November 2, 2012



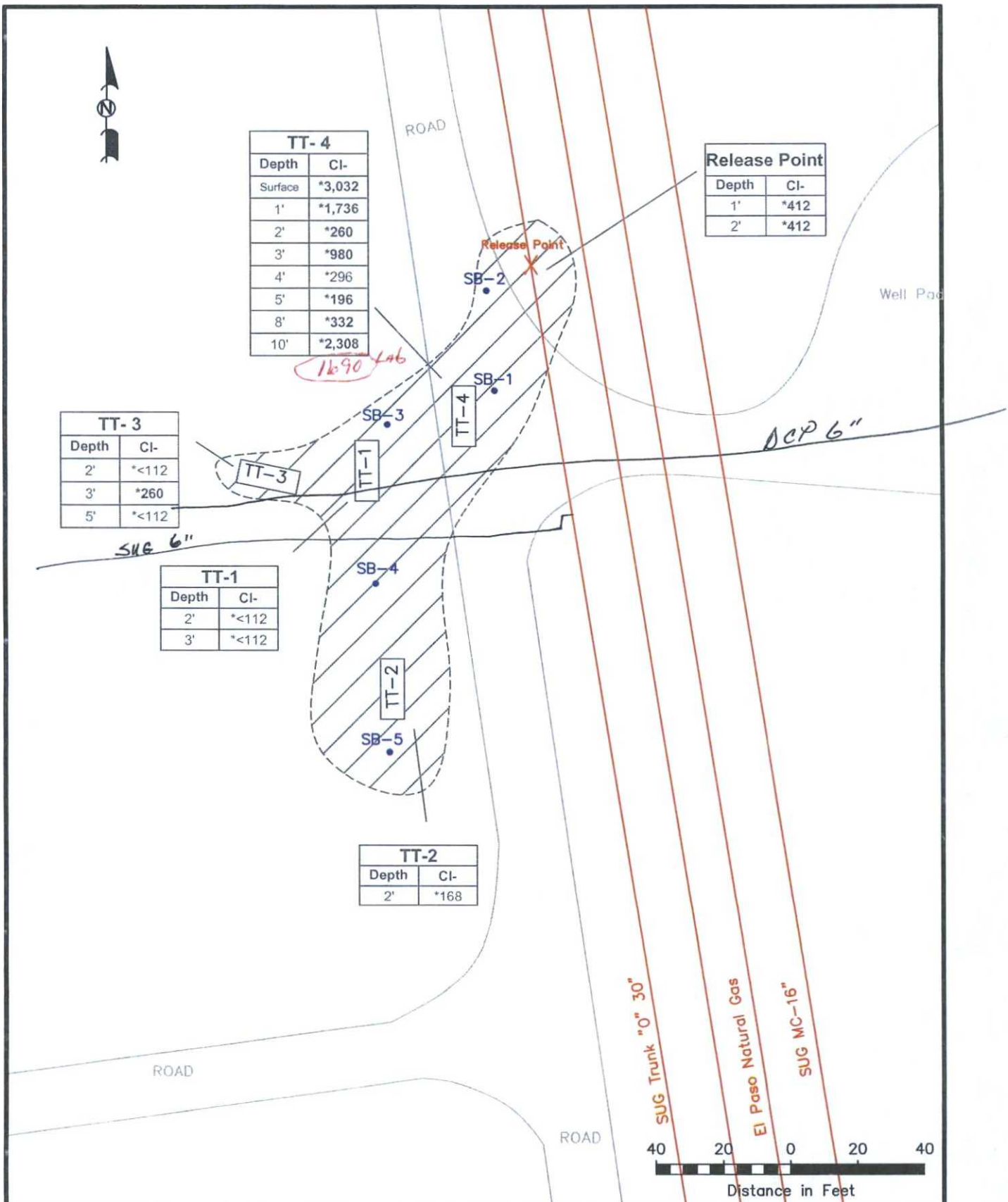
TT-4	
Depth	Cl-
Surface	*3,032
1'	*1,736
2'	*260
3'	*980
4'	*296
5'	*196
8'	*332
10'	*2,308

Release Point	
Depth	Cl-
1'	*412
2'	*412

TT-3	
Depth	Cl-
2'	*<112
3'	*260
5'	*<112

TT-1	
Depth	Cl-
2'	*<112
3'	*<112

TT-2	
Depth	Cl-
2'	*168



LEGEND:

- Inferred Flowpath
- Sample Location
- Pipeline
- Proposed Boring
- Road
- ▨ Inferred Flowpath
- *112 Chloride Field Test

Figure 2
Site & Sample Location Map
Southern Union Gas Services
Trunk "O" #5 (1RP-1523)
Lea County, NM

Basin Environmental Services

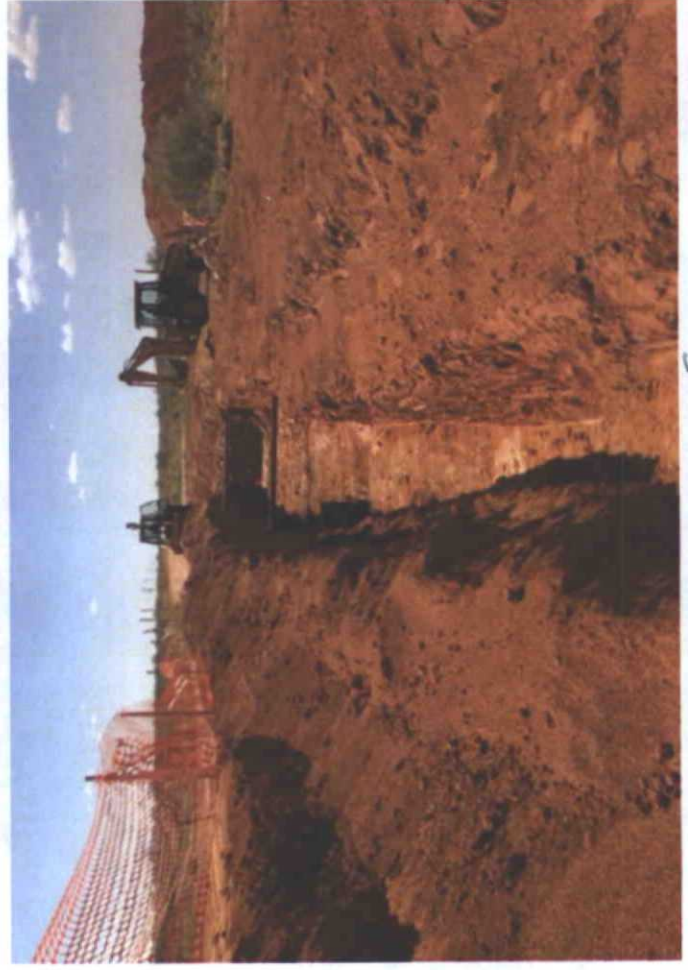
Scale: 1" = 40'	Drawn By: JWL	Prepared By: BRB
November 8, 2012		



REGISTRY TRUNK 0 #5

A photograph showing a close-up of a metal beam that has been severely corroded. The beam is oriented diagonally from the bottom left towards the top right. The surface of the beam is covered in a thick, uneven layer of orange-brown rust. There are several dark, irregular holes and pits visible along the length of the beam, indicating significant structural degradation. The background is a mottled, reddish-brown surface, possibly a wall or another part of the structure, which also shows signs of corrosion. The lighting is somewhat uneven, with the beam appearing brighter than the background.

CONDITION OF ABANDONED LINE



SUC9 TRUNK O #5

