



AE Order Number Banner

Report Description

This report shows an AE Order Number in Barcode format for purposes of scanning. The Barcode format is Code 39.



App Number: pPAC0633337409

1RP - 1128

SOUTHERN UNION GAS COMPANY

7/29/2016

Leking, Geoffrey R, EMNRD

From: Joel Lowry <jwlowry@basinenv.com>
Sent: Wednesday, December 26, 2012 10:23 AM
To: Leking, Geoffrey R, EMNRD
Cc: Rose Slade
Subject: Wantz Compressor (RP-1128) -- Permission to Install Clay Liner
Attachments: Wantz_1128_Attachments.pdf

Mr. Leking,

This email has been prepared in regards to the Wantz Compressor (RP-1128) Historical Release site. The legal description of the release site is Unit Letter "M" (SW/SW), Section 21, Township 21 South, Range 37 East, in Lea County, New Mexico. The geographic coordinates of the release site are 32° 27.589' North latitude and 103° 10.545' West longitude. The property affected by the release is owned by the Mary E Wantz Estate. The depth to groundwater is approximately eighty-five (85') bgs.

There is one domestic water well approximately two hundred fifteen feet (215') northwest (up gradient) of the release site. Based on the NMOCD ranking system, ten (10) points will be assigned to the site as a result of this criterion for a total site ranking of twenty (20) points.

On November 13, 2006, Southern Union discovered a release had occurred at the Wantz Compressor Station. The Form C-141 indicated a two-inch (2") line from an inlet scrubber on a two hundred ten barrel (210 bbls) storage take failed, resulting in the release of approximately six barrels (6 bbls) of crude oil. During initial response activities, a temporary plug was installed and approximately four barrels (4 bbls) of free standing fluid was recovered. The release affected approximately five hundred eighty square feet (580 ft²) of caliche pad. Most of the affected area is under process piping and piping supports. The release was reported to the NMOCD-Hobbs District Office on November 20, 2006.

Beginning November 16, 2006, remediation activities were at the release site by an environmental contractor that is no longer affiliated with the site. Work records indicate impacted medium was shoveled by hand and stockpiled on-site atop plastic sheeting pending final disposition.

On November 22, 2006, approximately twelve cubic yards (12 yd³) of impacted soil was transport to Southern Union Gas Services' Landfarm (Discharge Permit # NM-02-0019) for treatment.

On November 28, 2006, three (3) soil samples (POR @ 3', B-12 10 inches and B-Comp. 10 inches) were collected from the excavated area and submitted to Xenco Laboratories, of Odessa, Texas for analysis of BTEX and TPH concentrations in accordance with EPA Methods SW 846-8021B and SW 846-8015M, respectively. Laboratory analytical results indicated benzene concentrations ranged from less than the laboratory method detection limit for soil sample B-Comp. 10' to 15.0 mg/Kg for soil sample POR @ 3'. Analytical results indicated BTEX concentrations ranged from 0.1938 mg/Kg for soil sample B-Comp. 10 inches to 245.0 mg/Kg for soil samples POR @ 3'. TPH concentrations ranged from 519.8 mg/Kg for soil sample B-Comp. 10 inches to 38,300 mg/Kg for soil sample POR @ 3'.

On September 25, 2012, Basin responded to the historical release site. One (1) initial soil sample (Release Point) was collected from the floor of the open excavation near the inferred release point. The soil sample was submitted to Xenco Laboratories for analysis of BTEX, TPH and chloride concentrations. Laboratory analytical results indicated the concentration of BTEX was less than the appropriate laboratory method detection limit

(MDL). Analytical results indicated the concentration of TPH was 3,671 mg/Kg. The concentration of chloride was 2.47 mg/Kg. Based on laboratory analytical reports, further excavation would be necessary in the area defined by soil sample Release Point.

On October 10, 2012, the area defined by soil sample Release Point was advanced an additional one foot (1'). Four (4) soil samples (Release Point @ 4', East End @ .5', Middle @ 1' and West End @ 1.5') were collected from the excavation and submitted to the laboratory for analysis of TPH and chloride concentrations. Laboratory analytical results indicated TPH concentrations ranged from less than the appropriate laboratory MDL for soil samples East End @ .5', Middle @ 1' and West End @ 1.5' to 641.7 mg/Kg for soil sample Release Point @ 4'. Analytical results indicated chloride concentrations ranged from less than the appropriate laboratory MDL for soil samples East End @ .5', Middle @ 1' and West End @ 1.5' to 17.8 mg/Kg for soil sample Release Point @ 4'. Based on laboratory analytical reports, further excavation would be necessary in the area defined by soil sample Release Point @ 4'.

On December 4, 2012, the area defined by soil sample Release Point @ 4' was advanced an additional one foot (1') to the hard rock layer. One soil sample (Release Point @ 5') was collected from the floor of the excavation and submitted to the laboratory for analysis of BTEX and TPH concentrations. Laboratory analytical results indicated the concentration of benzene was less than the laboratory MDL. Laboratory analytical results indicated the concentration of BTEX was 0.00165 mg/KG. The concentration of TPH was 676 mg/Kg.

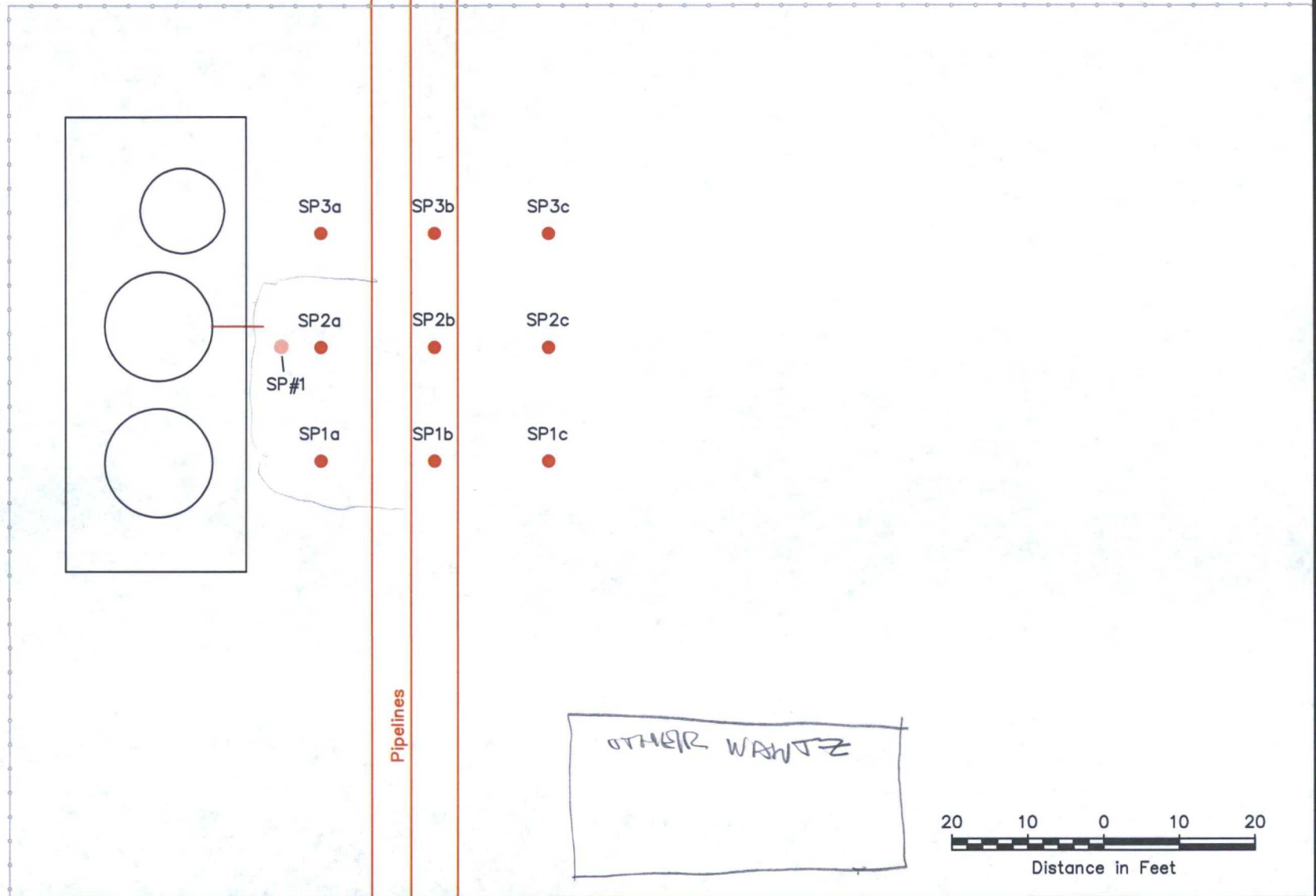
With your permission, Southern Union would like to install a one foot (1') clay liner over the portion of the excavation represented by soil sample Release Point @ 5' as discussed during the December 12, 2012, meeting. Upon completing the installation of the clay liner, a Risk-Based Soil Closure will be prepared, detailing remediation activities and the results of laboratory analysis. Any soil containing COC concentrations above NMOCD regulatory remediation action levels will be readdressed upon decommissioning and abandoning the active compressor station.

For your convenience, A Site Location Map, Site and Sample Map and Soil Chemistry Table are attached. If you have any questions or need any additional information, feel free to contact me by phone or email. Thanks.

Respectfully,

Joel Lowry

Basin



Legend

- Sample Location
- - - Excavation Extent
- Pipeline
- Fence

Figure 2
Site & Sample Location Map
Southern Union Gas Services
Wantz Compressor
NMOCD Ref RP-2580
Lea County, New Mexico

Basin Environmental Services

Prep By: JWJ

Checked By: BJA

December 28, 2012

Scale 1"=20'

TABLE 1

CONCENTRATIONS OF BENZENE, BTEX, TPH & CHLORIDE IN SOIL

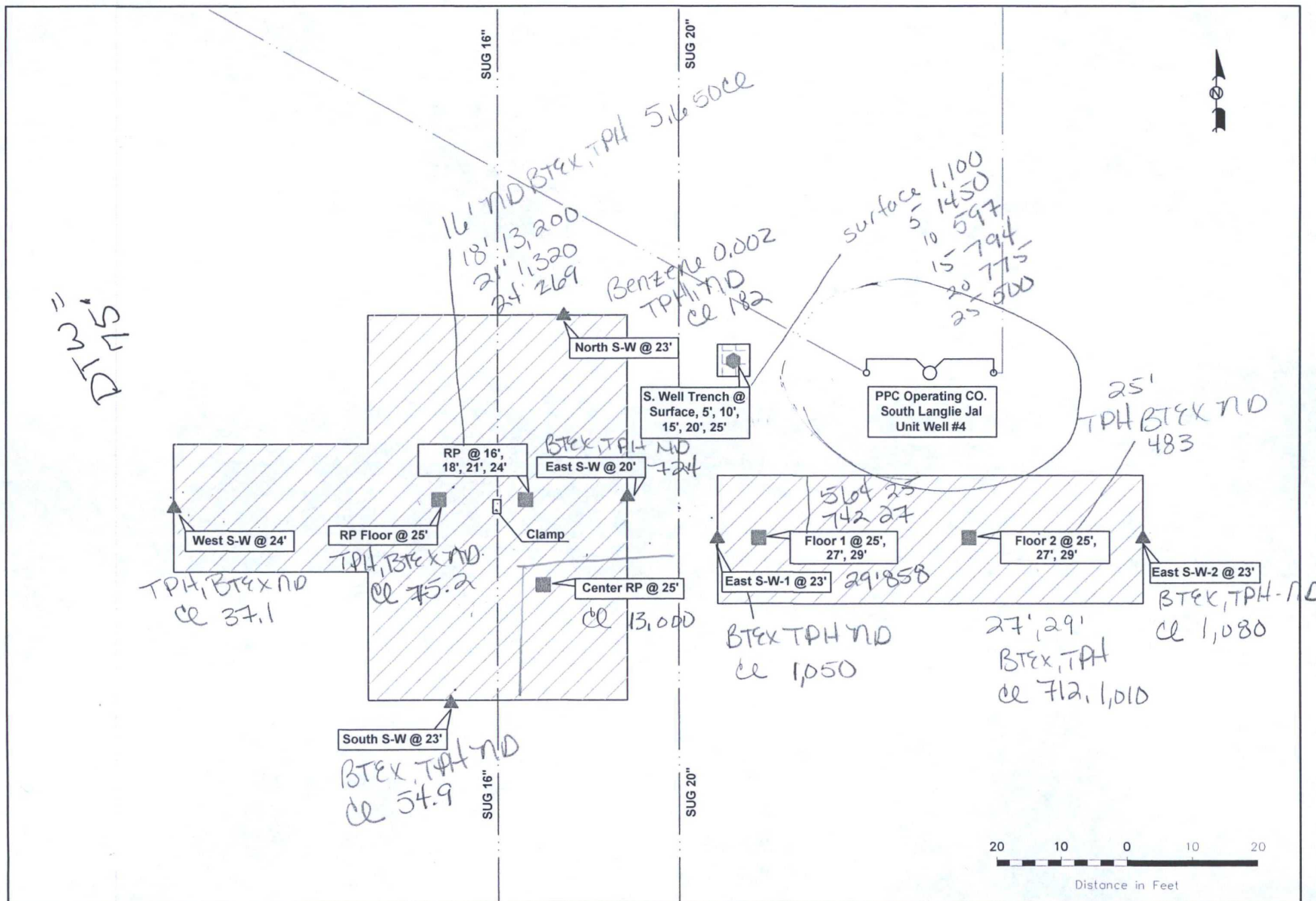
SOUTHERN UNION GAS SERVICES
WANTZ COMPRESSOR HISTORICAL
HISTORICAL RELEASE SITE
LEA COUNTY, NEW MEXICO
NMOCD REF# 1RP-2580

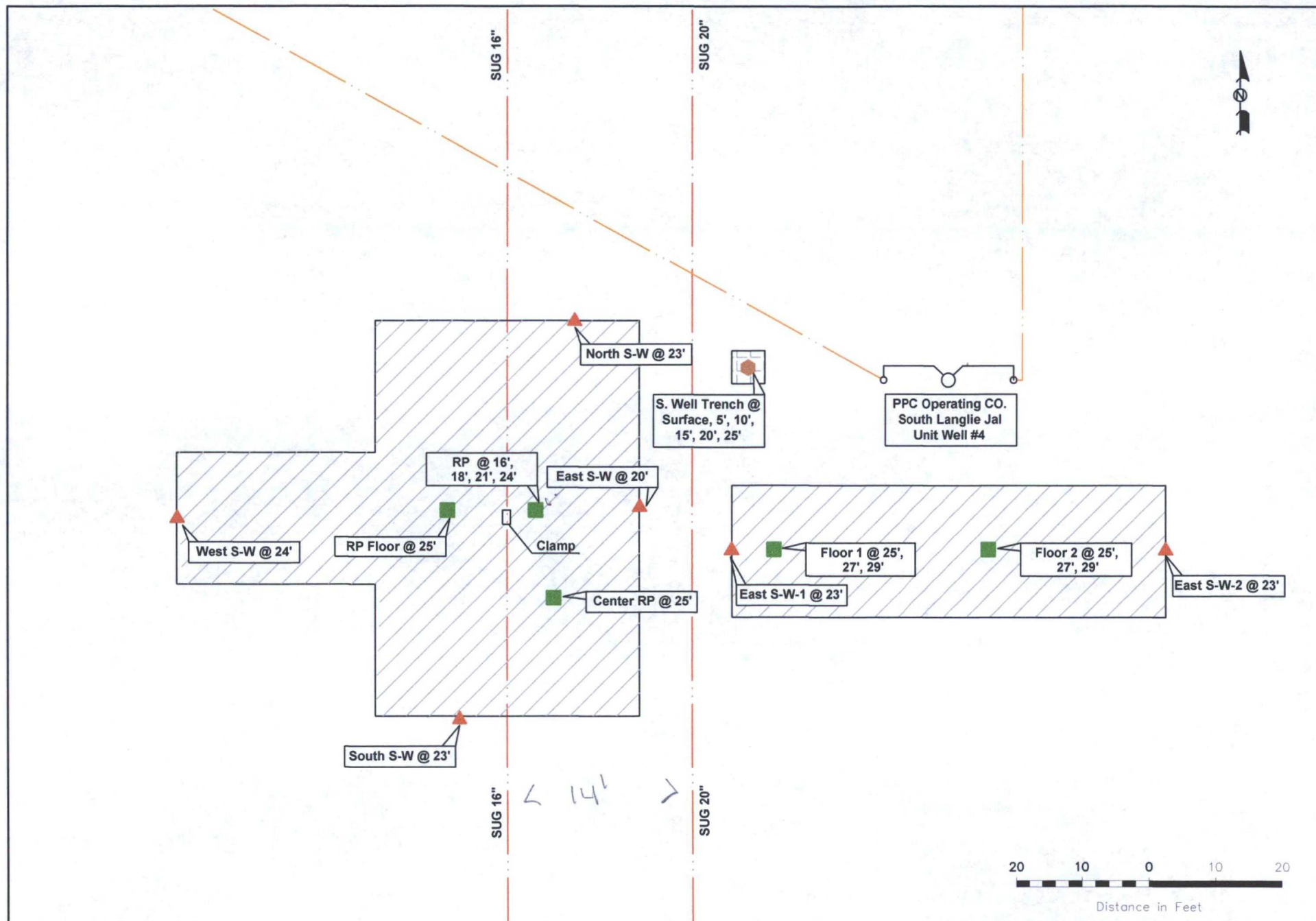
SAMPLE LOCATION	SAMPLE DEPTH (BGS)	SAMPLE DATE	SOIL STATUS	BENZENE (mg/Kg)	TOLUENE (mg/Kg)	ETHYL-BENZENE (mg/Kg)	TOTAL XYLENES (mg/Kg)	TOTAL BTEX (mg/Kg)	GRO C ₆ -C ₁₂ (mg/Kg)	DRO C ₁₂ -C ₂₈ (mg/Kg)	ORO C ₂₈ -C ₃₅ (mg/Kg)	TOTAL TPH C ₆ -C ₂₈ (mg/Kg)	CHLORIDE (mg/Kg)
SP#1 @ Surface	Surface	12/4/2012	In-Situ	-	-	-	-	-	<80.2	6,600	336	6,940	2,270
SP#1 @ 2'	2'	12/4/2012	In-Situ	-	-	-	-	-	<15.4	557	22.5	580	172
SP1a @ Surface	Surface	12/28/2012	In-Situ	-	-	-	-	-	<15.9	1,020	91.7	1,110	57.0
SP1a @ 2'	2'	12/28/2012	In-Situ	-	-	-	-	-	<16.7	<16.7	<16.7	<16.7	3.22
SP1a @ 4'	4'	12/28/2012	In-Situ	-	-	-	-	-	<18.7	34.8	<18.7	34.8	15.3
SP2a @ Surface	Surface	12/28/2012	In-Situ	-	-	-	-	-	<18.1	705	36.9	742	13.4
SP2a @ 2'	2'	12/28/2012	In-Situ	-	-	-	-	-	<17.8	<17.8	<17.8	<17.8	<1.19
SP2a @ 4'	4'	12/28/2012	In-Situ	-	-	-	-	-	<19.0	<19.0	<19.0	<19.0	3.73
SP3a @ Surface	Surface	12/28/2012	In-Situ	-	-	-	-	-	<18.8	<18.8	<18.8	<18.8	30.0
SP3a @ 2'	2'	12/28/2012	In-Situ	-	-	-	-	-	<17.9	<17.9	<17.9	<17.9	2.68
SP3a @ 4'	4'	12/28/2012	In-Situ	-	-	-	-	-	<16.5	<16.5	<16.5	<16.5	29.5
SP1b @ Surface	Surface	12/28/2012	In-Situ	-	-	-	-	-	<18.8	95.5	<18.8	95.5	21.6
SP1b @ 2'	2'	12/28/2012	In-Situ	-	-	-	-	-	<15.3	15.5	<15.3	15.5	5.03
SP1b @ 4'	4'	12/28/2012	In-Situ	-	-	-	-	-	<16.5	<16.5	<16.5	<16.5	3.95
SP2b @ Surface	Surface	12/28/2012	In-Situ	-	-	-	-	-	<19.1	138	<19.1	138	<1.27
SP2b @ 2'	2'	12/28/2012	In-Situ	-	-	-	-	-	<15.4	<15.4	<15.4	<15.4	1.18
SP2b @ 4'	4'	12/28/2012	In-Situ	-	-	-	-	-	<18.2	<18.2	<18.2	<18.2	1.41
SP3b @ Surface	Surface	12/28/2012	In-Situ	-	-	-	-	-	<15.8	<15.8	<15.8	<15.8	<1.04
SP3b @ 2'	2'	12/28/2012	In-Situ	-	-	-	-	-	<15.2	<15.2	<15.2	<15.2	<1.02
SP3b @ 4'	4'	12/28/2012	In-Situ	-	-	-	-	-	<16.0	<16.0	<16.0	<16.0	7.50
SP1c @ Surface	Surface	12/28/2012	In-Situ	-	-	-	-	-	<18.5	<18.5	<18.5	<18.5	6.35
SP1c @ 2'	2'	12/28/2012	In-Situ	-	-	-	-	-	<15.3	<15.3	<15.3	<15.3	2.48
SP1c @ 4'	4'	12/28/2012	In-Situ	-	-	-	-	-	<15.5	<15.5	<15.5	<15.5	2.67
SP2c @ Surface	Surface	12/28/2012	In-Situ	-	-	-	-	-	<15.7	<15.7	<15.7	<15.7	10.2
SP2c @ 2'	2'	12/28/2012	In-Situ	-	-	-	-	-	pending	pending	pending	pending	pending
SP2c @ 4'	4'	12/28/2012	In-Situ	-	-	-	-	-	<15.7	<15.7	<15.7	<15.7	7.66
SP3c @ Surface	Surface	12/28/2012	In-Situ	-	-	-	-	-	pending	pending	pending	pending	pending
SP3c @ 2'	2'	12/28/2012	In-Situ	-	-	-	-	-	pending	pending	pending	pending	pending
SP3c @ 4'	4'	12/28/2012	In-Situ	-	-	-	-	-	<16.0	21.0	<16.0	21.0	2.07
NMOCD Standard				10				50				100	250

- = Not analyzed.

MD 1611







Legend:

- | | | | |
|--|-------------------------------|--|------------------|
| | Sidewall Soil Sample Location | | SUG Pipeline |
| | Trench Soil Sample Location | | Unknown Pipeline |
| | Floor Soil Sample Location | | |
| | Trench Area | | |
| | Excavation Area | | |

Figure 2
Site Details & Soil Sample
Locations Map
Southern Union Gas Service
Trunk MD 16 Inch
Lea County, NM



2057 Commerce Drive
Midland, Texas 79703
432.520.7720

www.novasafetyandenvironmental.com

August 28, 2013	Scale: 1" = 10'	CAD By: CAS	Checked By:
Lat. N 32° 08.525'		Long. W 103° 11.798'	

CONCENTRATIONS OF BENZENE, BTEX, TPH AND CHLORIDE IN SOIL

All concentrations are reported in mg/Kg

[illegible]

Submit 3 Copies
to Appropriate
District Office

State of New Mexico
Energy, Minerals and Natural Resources Department

Form C-103
Revised 1-1-89

DISTRICT I
P.O. Box 1980, Hobbs, NM 88240

DISTRICT II
P.O. Drawer DD, Artesia, NM 88210

DISTRICT III
1000 Rio Brazos Rd., Aztec, NM 87410

OIL CONSERVATION DIVISION
310 Old Santa Fe Trail, Room 206
Santa Fe, New Mexico 87503

WELL API NO. 30-025-11488
5. Indicate Type of Lease STATE <input type="checkbox"/> FEE <input type="checkbox"/>
6. State Oil & Gas Lease No. 20157
7. Lease Name or Unit Agreement Name S Langlie Jal Unit
8. Well No. 4
9. Pool name or Wildcat Jalmat Tansill Yates 7 Rivers

SUNDRY NOTICES AND REPORTS ON WELLS (DO NOT USE THIS FORM FOR PROPOSALS TO DRILL OR TO DEEPEN OR PLUG BACK TO A DIFFERENT RESERVOIR. USE "APPLICATION FOR PERMIT" (FORM C-101) FOR SUCH PROPOSALS.)	
1. Type of Well: OIL WELL <input type="checkbox"/> GAS WELL <input type="checkbox"/> OTHER Injection	
2. Name of Operator Bristol Resources Corporation	
3. Address of Operator 6655 S Lewis, Suite 200, Tulsa, OK 74136	
4. Well Location Unit Letter I : 1980 Feet From The North Line and 1980 Feet From The East Line 7 Section 25S Township 37E Range NMPM Lea County	
10. Elevation (Show whether DF, RKB, RT, GR, etc.) 3353' TD 3130' DF 3125' GL	

11. Check Appropriate Box to Indicate Nature of Notice, Report, or Other Data	
NOTICE OF INTENTION TO:	SUBSEQUENT REPORT OF:
PERFORM REMEDIAL WORK <input type="checkbox"/>	REMEDIAL WORK <input type="checkbox"/>
TEMPORARILY ABANDON <input type="checkbox"/>	ALTERING CASING <input type="checkbox"/>
PULL OR ALTER CASING <input type="checkbox"/>	COMMENCE DRILLING OPNS. <input type="checkbox"/>
OTHER: Pull tbg & repair packer <input checked="" type="checkbox"/>	PLUG AND ABANDONMENT <input type="checkbox"/>
	CASING TEST AND CEMENT JOB <input type="checkbox"/>
	OTHER: <input type="checkbox"/>

12. Describe Proposed or Completed Operations (Clearly state all pertinent details, and give pertinent dates, including estimated date of starting any proposed work) SEE RULE 1103.

Pull tbg and repair packer and test tubing. Replace bad tubing. Date of starting work is as soon as possible after approval.

I hereby certify that the information above is true and complete to the best of my knowledge and belief.

SIGNATURE Katherine E. Henshaw TITLE Production Analyst DATE 5/17/99

TYPE OR PRINT NAME Katherine E. Henshaw

TELEPHONE NO. 915-553-1923 (Don Tyler)

(This space for State Use)

APPROVED BY DAVID A. WILSON TITLE FIELD SUPERVISOR DATE 5/17/99

CONDITIONS OF APPROVAL, IF ANY:

2.0'
0.0200
83
20.0

02	
Depth	0.5'
Total BTEX	<0.0200
TPH	<50.0
CI	<20.0

03	
Depth	0.5'
Total BTEX	<0.0200
TPH	<50.0
CI	<20.0

04	
Depth	0.5'
Total BTEX	<0.0200
TPH	<50.0
CI	<20.0

05	
pth	0.5'
BTEX	<0.0200
PH	850
CI	<20.0

SUG Pipelines

PIPELINE ROAD

SUG Pipeline

KM-Pipelines

08	
Depth	0.5'
Total BTEX	<0.0200
TPH	415
CI	4510

07	
Depth	0.5'
Total BTEX	<0.0200
TPH	5.30
CI	4850

CS-8	
Depth	3.0'
Total BTEX	<0.0200
TPH	<50.0
CI	229

CS-9	
Depth	3.0'
Total BTEX	<0.0200
TPH	<50.0
CI	577

CS-10	
Depth	2.0'
Total BTEX	<0.0200
TPH	<50.0
CI	423

BG-2	
Depth	1.0' 2.0'
Total BTEX	<0.0200 <0.0200
TPH	4.93 4.83
CI	<20.0 <20.0

10	
Depth	0.5'
Total BTEX	<0.0200
TPH	<50.0
CI	10100

CS-6	
Depth	2.0' 5.0'
Total BTEX	1360 --
TPH	47 --
CI	2310 156

CS-04	
Depth	2.0' 3.0'
Total BTEX	<0.0200 --
TPH	<50.0 --
CI	1410 274

CS-01	
Depth	2.0'
Total BTEX	<0.0200
TPH	<50.0
CI	4.67

11	
Depth	0.5'
Total BTEX	<0.0200
TPH	4.57
CI	13000

CS-02	
Depth	
Total BTEX	
TPH	
CI	

HOBBS OCD

AUG 27 2013

RECEIVED

LEGEND

Location
Sample Location
Sample Location
Innel Outline
Limits

Depth (ft)

DETAILED SITE MAP WITH



Photo 5



Photo 6

Southern Union Gas Services Site: Wantz Compressor
Job #2006-056 Before Remediation 11/15/06

Photo 7



Southern Union Gas Services Site: Wantz Compressor
Job #2006-056 Before Remediation 11/15/06



