



PHILLIPS PETROLEUM COMPANY

FARMINGTON, NEW MEXICO 87401
5525 HWY. 64 NBU 3004

November 24, 1998

Dak 2095
Nov 30

New Mexico Oil & Gas Conservation Div.
2040 South Pacheco
Santa Fe, New Mexico 87505-6429

Downhole Commingling Allocation Method
on the San Juan 30-5 Unit #73

Dear Sirs:

In August 1998 Phillips sent in the application for Downhole Commingling the subject well. The figures we had to work with at the time didn't correctly represent the Dakota forecast. Attached you will find the new Dakota forecast and production graph.

Please call me at 599-3455 if you have questions.

Sincerely,

PHILLIPS PETROLEUM COMPANY

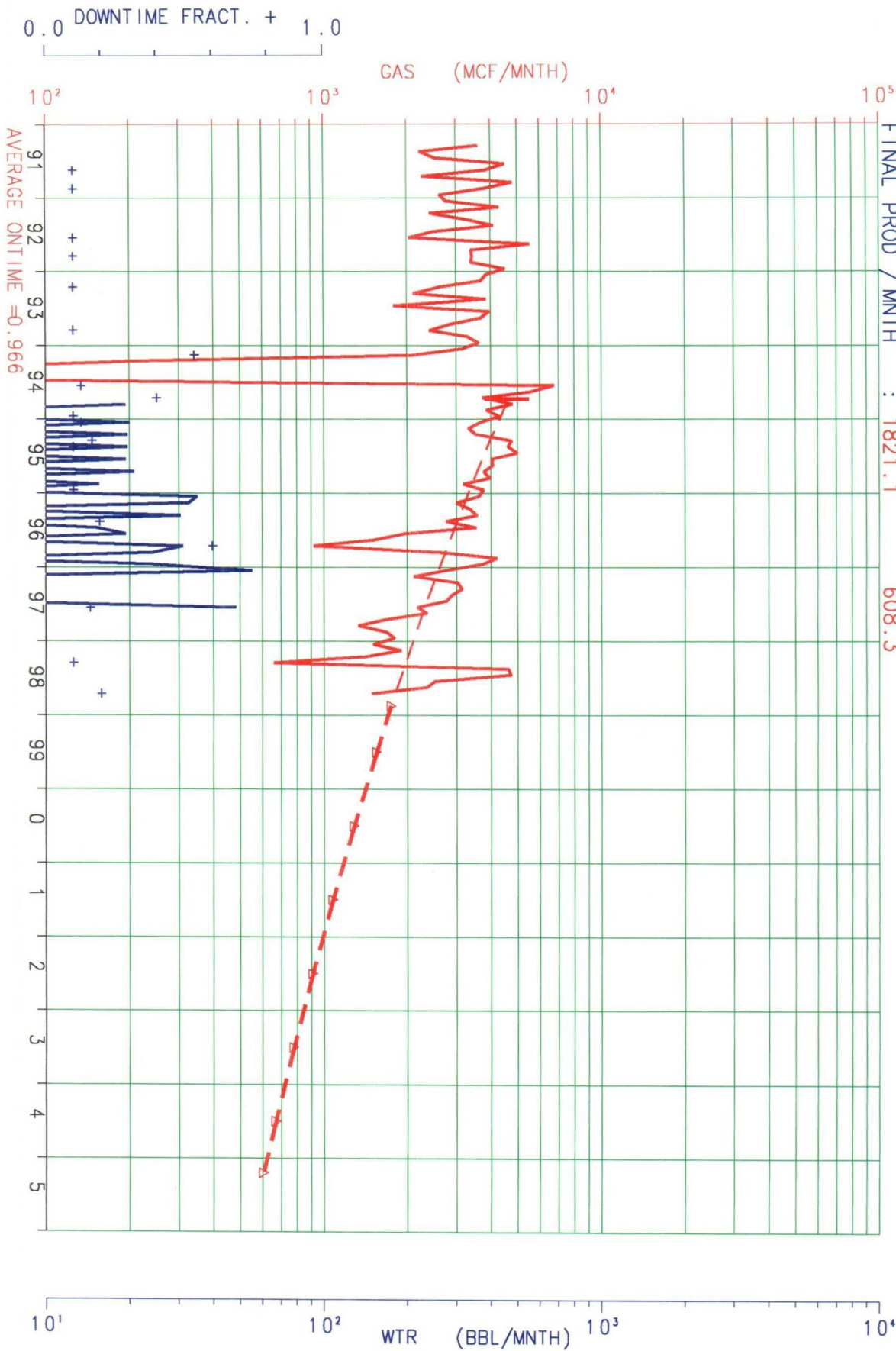
Mark W. Stodola

Mark W. Stodola
Reservoir Engineer

MS/pc

cc: OCD - Aztec
BLM- Farmington

	10/94-9/98	10/98-LIFE	ASSOC.	Current Cums
INITIAL PROD / MNTH	: 4762.9	1855.1	0.0	275228. MCF GAS
REMAINING LIFE	: 4.00	6.65		
HYPR(0.33) DECL %	: 28.63	20.98		
CUM PRODUCTION	: 144201.	83353.	0.	450. BBL WTR
FINAL PROD / MNTH	: 1821.1	608.3		



LEASE- 650262 : SAN JUAN 30-5 DAKOTA UNIT
 RESVR- 076 : BASIN DAKOTA
 WELL- 000073 CUM MCF =745498.
 AVERAGE DOWNTIME =0.966

L989401
 ZONE-650262076000073 L989401
 API-30039225720000 THRU 98/09

29-5 Unit #73 Dakota Forecast

<i>Initial Production Rate</i>	=	85 MCFD
<i>Hyperbolic Exponent</i>	=	0.33
<i>Decline Rate</i>	=	20 %

	Month	Monthly MCF
1998	Oct	2,613
	Nov	2,487
	Dec	2,528
1999	Jan	2,486
	Feb	2,210
	Mar	2,409
	Apr	2,293
	May	2,332
	Jun	2,221
	Jul	2,259
	Aug	2,223
	Sep	2,117
	Oct	2,154
	Nov	2,052
	Dec	2,088
2000	Jan	2,055
	Feb	1,829
	Mar	1,995