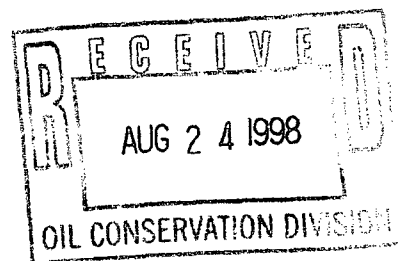


MACK ENERGY CORPORATION

NSL 9/14/98

Post Office Box 960
Artesia, New Mexico 88211-0960
(505) 748-1288 / FAX (505) 746-2362



August 21, 1998

Oil Conservation Division
Attn: Mike Stogner
2040 South Pacheco
Santa Fe, NM 87505

Dear Mr. Stogner:

Mack Energy Corporation respectfully requests an administrative approval without notice and hearing of the following unorthodox well location.

Because of our desire to drill this well in a timely manner, we also request your approval be expedited. The well location and legal description is as follows:

Schley Federal #6
2035 FNL & 2450 FWL
Sec. 29, T17S, R29E
Eddy County, New Mexico

The well will be completed in the Paddock formation in the East Empire Yeso Pool.

Attached to this application are the following exhibits.

- A.) Well location and acreage dedication plat (form C-102) filed with the Artesia office of the Oil Conservation Division (Exhibit A).
- B.) A plat showing the proposed unorthodox locations, the respective proration units, and the offsetting proration units (Exhibit B).
- C.) A map showing the reason for the unorthodox location, the original location would have fallen on top of or too close to existing pipelines (Exhibit C).
- D.) A lease & well location map showing that there are 2 wells staked and two other possible locations for effective 10-acre spacing on this particular 40-acre tract (Exhibit D).

*Oil Conservation Division
August 21, 1998
Page 2*

Moving the location to the east will provide better drainage for the East Empire Yeso Pool since future locations will be located on effective 10-acre spacing.

By copy of this letter including the exhibits to all parties, we are notifying them by certified mail return-receipt requested of the unorthodox location.

Thank you for your assistance in this matter. If you have any questions, please feel free to call.

Sincerely,

MACK ENERGY CORPORATION



*Matt J. Brewer
Geological Engineer*

/mb

Enclosures

cc: CERTIFIED MAIL:

*Attn: Michael Cervantes
Texaco Exploration & Production
500 North Loraine
Midland, TX 79702*

DISTRICT I

P.O. Box 1980, Hobbs, NM 88241-1980

State of New Mexico

Energy, Minerals and Natural Resources Department

Form C-102

Revised February 10, 1994

Submit to Appropriate District Office

State Lease - 4 Copies

Fee Lease - 3 Copies

DISTRICT II

P.O. Drawer DD, Artesia, NM 88211-0719

DISTRICT III

1000 Rio Brazos Rd., Aztec, NM 87410

DISTRICT IV

P.O. BOX 2088, SANTA FE, N.M. 87504-2088

OIL CONSERVATION DIVISION

P.O. Box 2088

Santa Fe, New Mexico 87504-2088

☐ AMENDED REPORT**WELL LOCATION AND ACREAGE DEDICATION PLAT**

API Number		Pool Code 96610		Pool Name East Empire Yeso	
Property Code 022367		Property Name SCHLEY FEDERAL			Well Number 6
OGRID No. 013837		Operator Name MACK ENERGY CORPORATION			Elevation 3604

Surface Location

UL or lot No. F	Section 29	Township 17 S	Range 29 E	Lot Idn	Feet from the 2035	North/South line NORTH	Feet from the 2450	East/West line WEST	County EDDY
--------------------	---------------	------------------	---------------	---------	-----------------------	---------------------------	-----------------------	------------------------	----------------

Bottom Hole Location If Different From Surface

UL or lot No.	Section	Township	Range	Lot Idn	Feet from the	North/South line	Feet from the	East/West line	County
Dedicated Acres		Joint or Infill		Consolidation Code		Order No.			

NO ALLOWABLE WILL BE ASSIGNED TO THIS COMPLETION UNTIL ALL INTERESTS HAVE BEEN CONSOLIDATED
OR A NON-STANDARD UNIT HAS BEEN APPROVED BY THE DIVISION

		OPERATOR CERTIFICATION I hereby certify the the information contained herein is true and complete to the best of my knowledge and belief. <u>Matt J. Brewer</u> Signature Matt J. Brewer Printed Name Geological Engineer Title 7/27/98 Date	
		SURVEYOR CERTIFICATION I hereby certify that the well location shown on this plat was plotted from field notes of actual surveys made by me or under my supervision, and that the same is true and correct to the best of my belief. JULY 10, 1998 Date Surveyed Signature <u>Ronald E. Edson</u> Professional Surveyor DMCC 3239 98-11-10 7-21-98 Certificate No. RONALD E. EDSON 3239 GARY E. EDSON 12641 RONALD 12185	

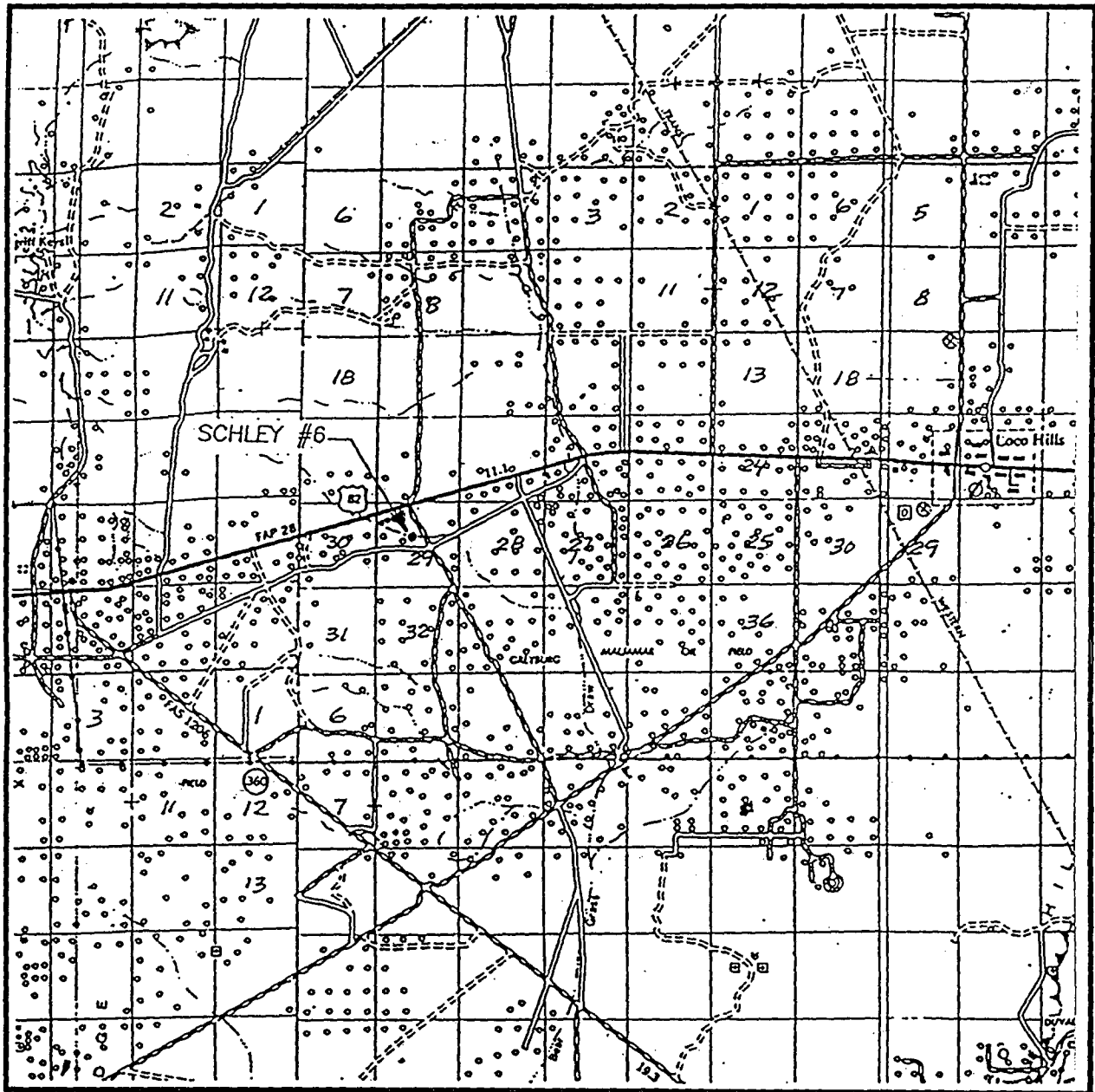


CONTOUR INTERVAL:
RED LAKE SE - 10'

RED LAKE SE, N.M.

(505) 393-3117

VICINITY MAP



SCALE: 1" = 2 MILES

SEC. 29 TWP. 17-S RGE. 29-E

SURVEY N.M.P.M.

COUNTY EDDY

DESCRIPTION 2035' FNL & 2450' FWL

ELEVATION 3604

OPERATOR MACK ENERGY CORPORATION

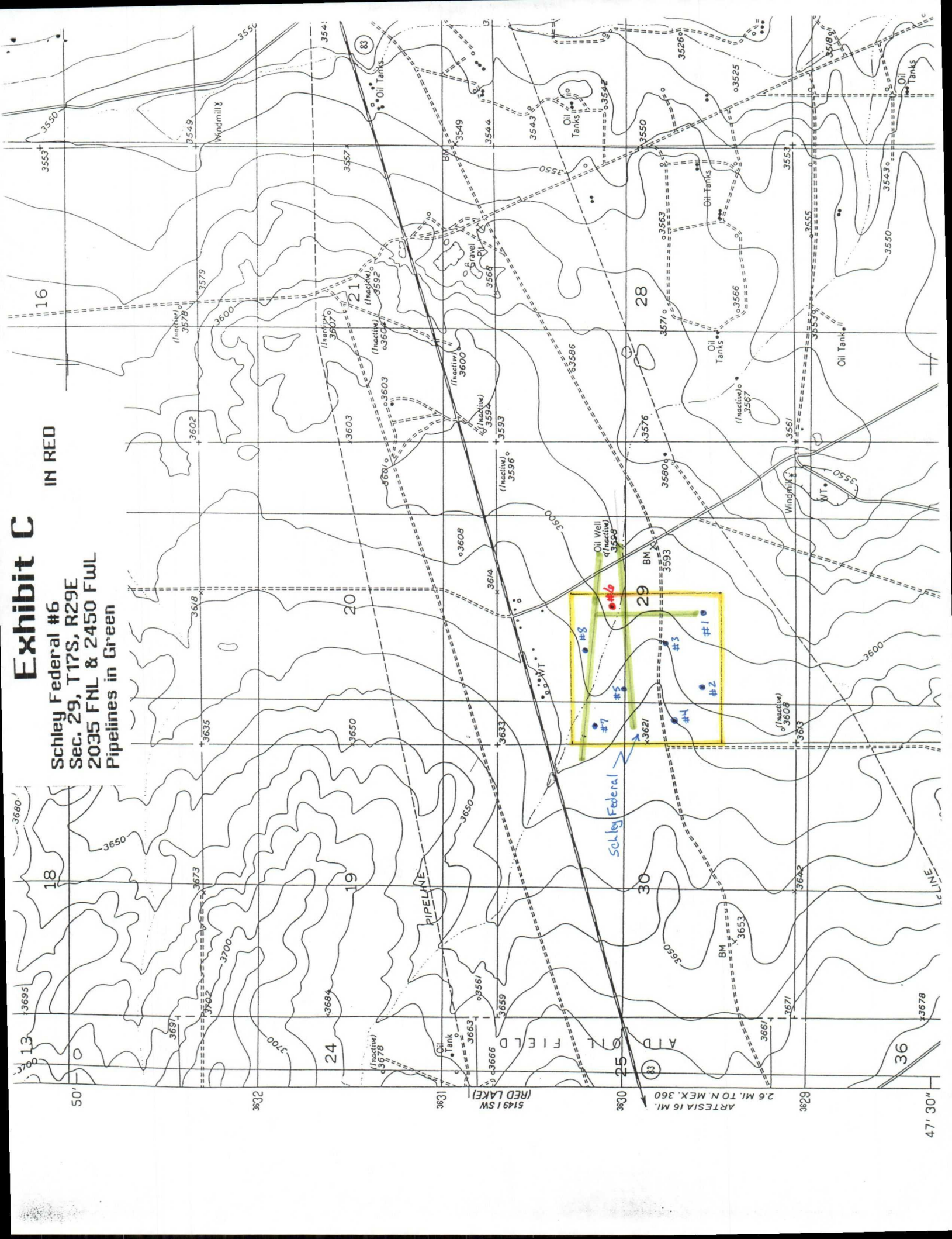
LEASE SCHLEY FEDERAL

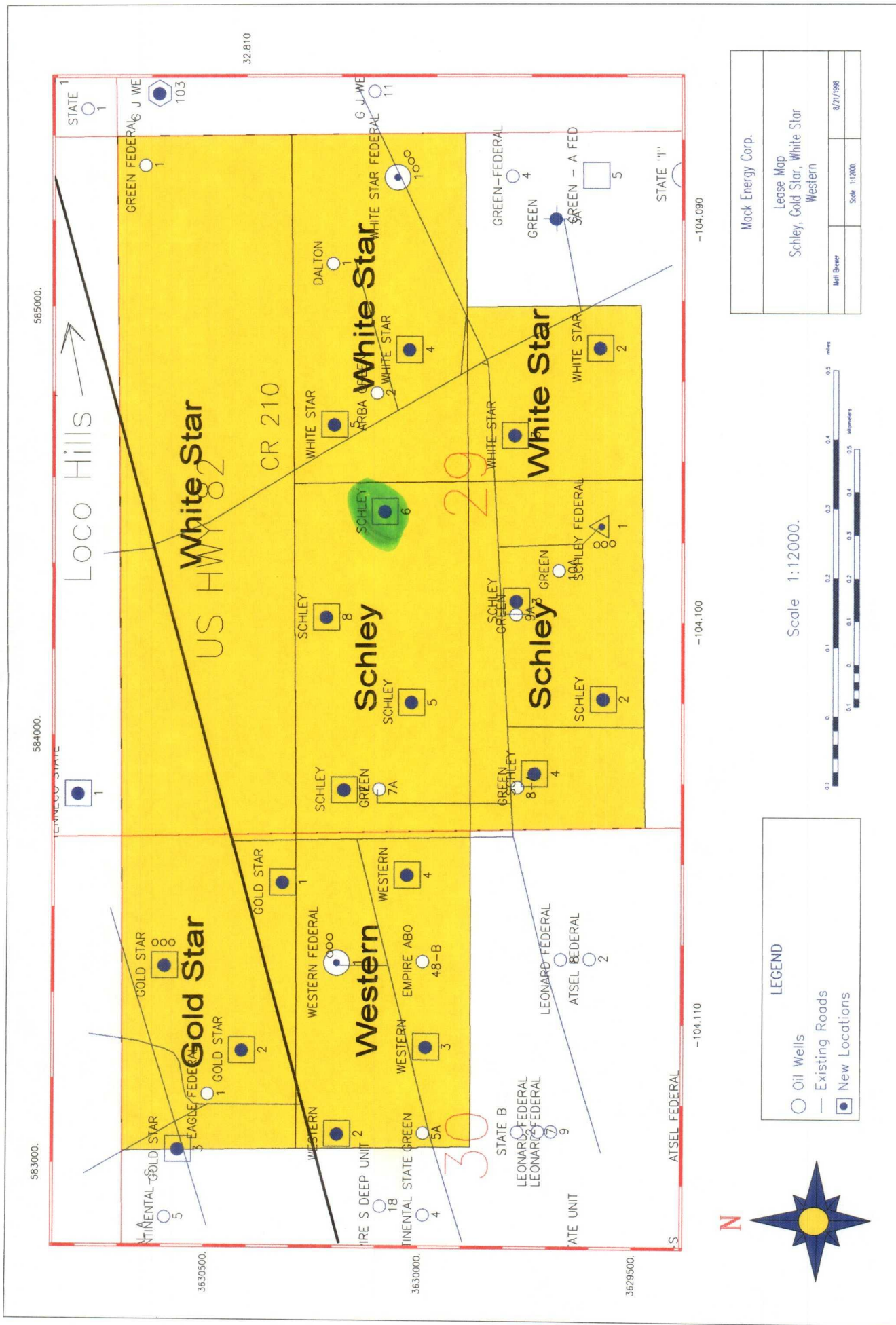
JOHN WEST ENGINEERING
HOBBS, NEW MEXICO
(505) 393-3117

Exhibit C

Schley Federal #6
Sec. 29, T17S, R29E
2035 FNL & 2450 FWL
Pipelines in Green

IN RED





(Exhibit D)