

BURLINGTON RESOURCES

SF 079391

773 112 12 11 11:53

62 11 11 11

March 12, 2002

New Mexico Oil Conservation Division
1000 Rio Brazos Road
Aztec, New Mexico 87410

Re: San Juan 27-5 Unit #70
G Section 8, T-27-N, R-5-W
30-039-07131

Gentlemen:

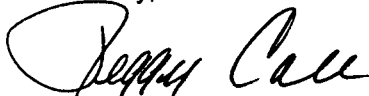
Attached is a copy of the allocation for the commingling of the subject well for the Lewis and Menefee pay add that was completed 5-9-01. DHC-2736 was issued for this well.

Gas:	Mesaverde	66%	-	11	B
	Dakota	34%	-		

Oil:	Mesaverde	83%	-		
	Dakota	17%	-	78409A	

These percentages were calculated using rate-time reserve estimate comparisons for each respective formation. Because the Lewis and Menefee formations were the only formations added during operations, the oil allocation has stayed the same as it was prior to working over the well. Please let me know if you have any questions.

Sincerely,



Peggy Cole
Regulatory Supervisor

Xc: NMOCD - Santa Fe
Bureau of Land Management

3401 East 30th, Post Office Box 4289, Farmington, NM 87499 505-326-9727 Fax: 505-326-9563

FARMINGTON COPY

Production Allocation Documentation

San Juan 27-5 Unit #70

Production Allocation

Based on Remaining Reserves

Lewis Payadd May 2001

GAS

	<u>RR</u>	<u>Allocation %</u>
Dakota	447.2	34%
All	<u>1,333.6</u>	
Mesaverde	886.3	66%

Condensate

Since only the Lewis was added, and the Lewis is not an oil-producing formation, the condensate allocation remains the same.

SJ 27-5 70 5340301 (DK) (32397198555.6268) Data: May. 1962-Feb. 2002

Operator: BURLINGTON RESOURCES O&G CO LP

Field: BASIN DAKOTA (PRORATED GAS)

Zone:

Type: Gas

Group: Well: 28_5LW

Alloc DK (Rate-Time)

qi: 4.99175 MMSCF, Jan, 1994

qf: 0.457092 MMSCF, Apr, 2033

di(Hyp): 15

RR: 447.216 MMSCF

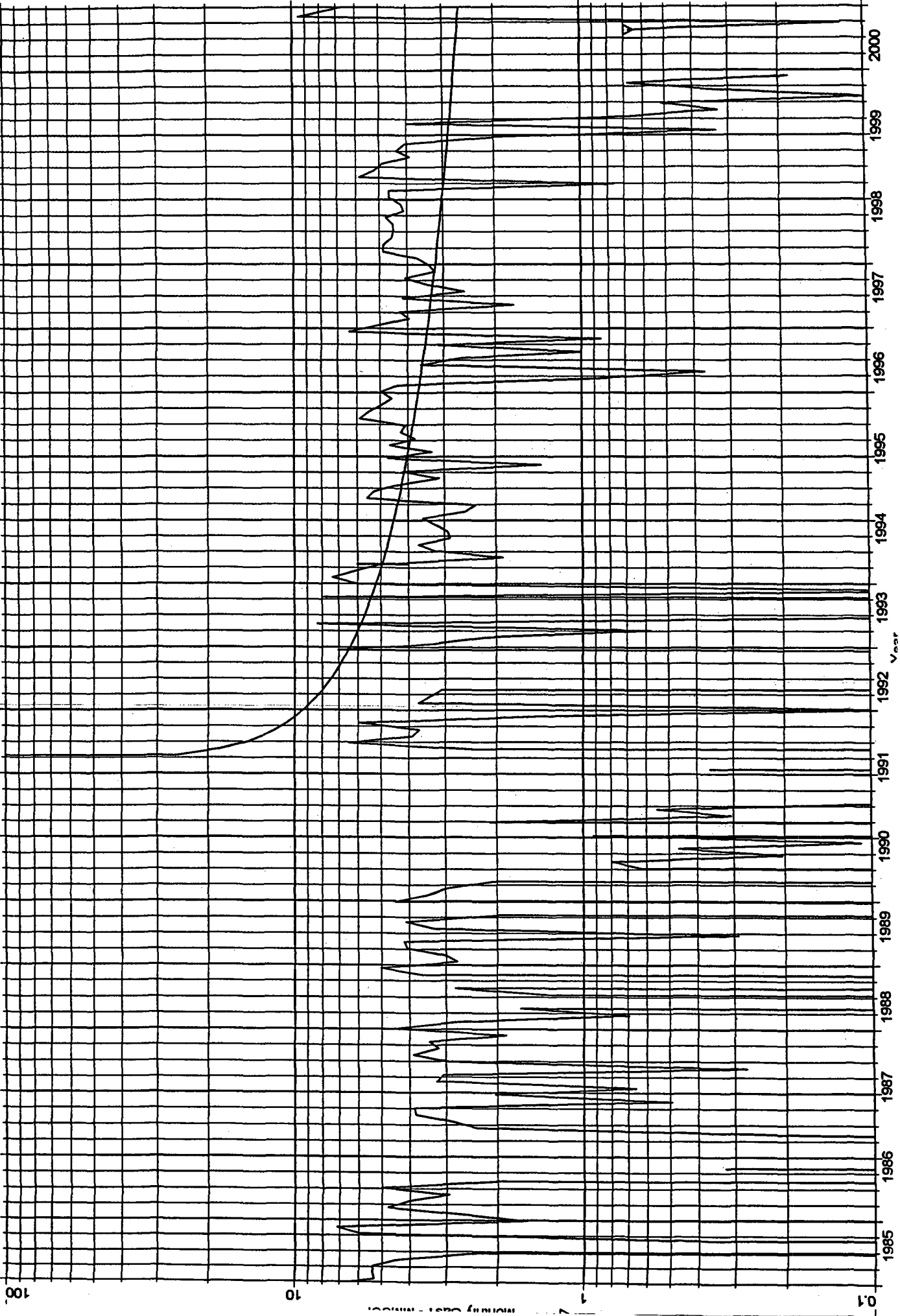
Production Cums

Oil: 0 MSTB

Gas: 1406.22 MMSCF

Water: 10.5663 MSTB

Cond: 0.285846 MSTB



SJ 27-5 70 ALL (32410205979.468) Data: Jan. 1962-Feb 2002

Operator: BURLINGTON RESOURCES OG CO LP

Field: BLANCO MESAVERDE (PRORATED GAS

Zone:

Type: Gas

Group: Well: 28 SLW

Alloc All (Rate-Time)

qt: 8.766 MMSCF, Jun, 2001

qt: 0.456815 MMSCF, May, 2050

d(Hyp): 17

RR: 1333.56 MMSCF

Production Cums

Oil: 0 MSTB

Gas: 1814.29 MMSCF

Water: 2.84026 MSTB

Cond: 4.2662 MSTB

