

BURLINGTON RESOURCES

OIL CONSERVATION DIV.

02 APR 30 PM 1:29

New Mexico Oil Conservation Division
1000 Rio Brazos Road
Aztec, New Mexico 87410

Re: Dusenberry #3E
SENE, Section 1, T-31-N, R-12-W
30-045-23644
San Juan County, New Mexico

Gentlemen:

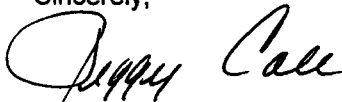
The above referenced well is a Mesaverde/Gallup/Dakota commingle. Attached is a copy of the allocation for the commingling of the subject well completed on May 16, 2001. DHC-2875 was issued for this well.

Gas:	Mesa Verde	88%
	Gallup	1%
	Dakota	11%

Oil:	Mesa Verde	88%
	Gallup	1%
	Dakota	11%

These allocations are based upon reserves assigned to each formation founded on production from the respective formations before and after workover operations. Because condensate production drastically increased after the Mesaverde formation was added, the oil allocation has been assigned the same percentages as the gas. Please let me know if you have any questions.

Sincerely,



Peggy Cole
Regulatory Supervisor

Xc: NMOCD - Santa Fe
Bureau of Land Management

Production Allocation Documentation

Dusenberry #3E

Production Allocation

Based on Remaining Reserves

Mesaverde Recomplete April 2001

GAS

	<u>RR</u>	<u>Allocation %</u>
Dakota	114.1	11%
Gallup	9.9	1%
All	<u>1077.1</u>	
Mesaverde	953.0	88%

Condensate

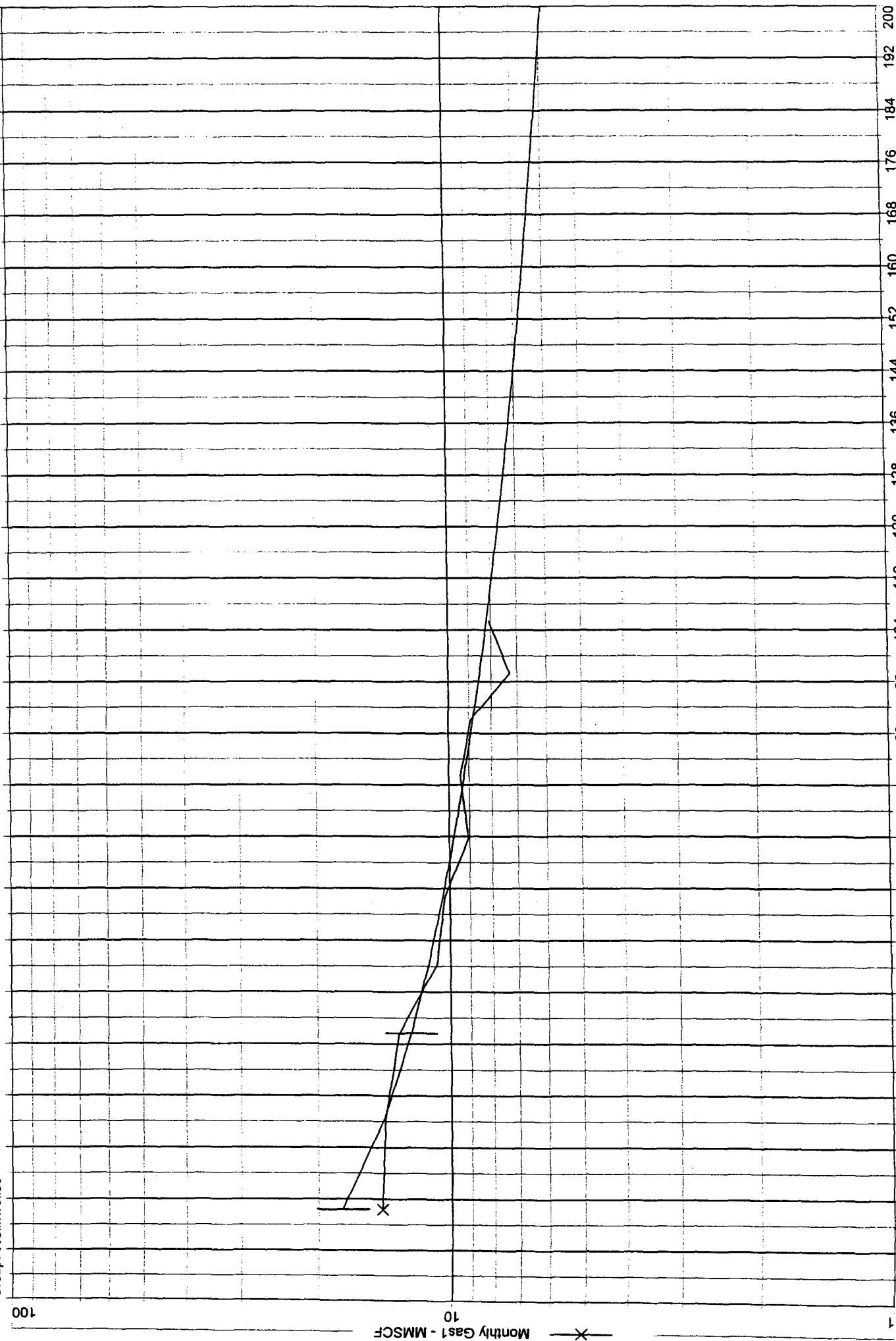
Because of the drastic increase in condensate production since the addition of the Mesaverde formation, condensate allocations will mirror the gas allocations

DUSENBERRY 3E ALL (DUSENBERRY 3E MV) Data: Jun.2001-Mar.2002

Operator: BURLINGTON RESOURCES OG CO LP
 Field: BLANCO MESAVERDE (PRORATED GAS)
 Zone:
 Type: Gas
 Group: Well: wells3

all (Rate-Cum)
 qi: 13.149 MMSCF, Aug. 2001
 qf: 0.457247 MMSCF, Jul. 2046
 di(Hyp): 46
 RR: 1077.06 MMSCF

Production Cums
 Oil: 0 MSTB
 Gas: 105.375 MMSCF
 Water: 0 MSTB
 Cond: 0 MSTB



DUSENBERRY 3E GP (DUSENBERRY 3E 1467002) Data: Jan. 1980-Mar. 2001

Operator: BURLINGTON RESOURCES OG CO LP

Field: DUSENBERRY GALLUP (GAS)

Zone:

Type: Gas

Group: None

gp (Rate-Time)

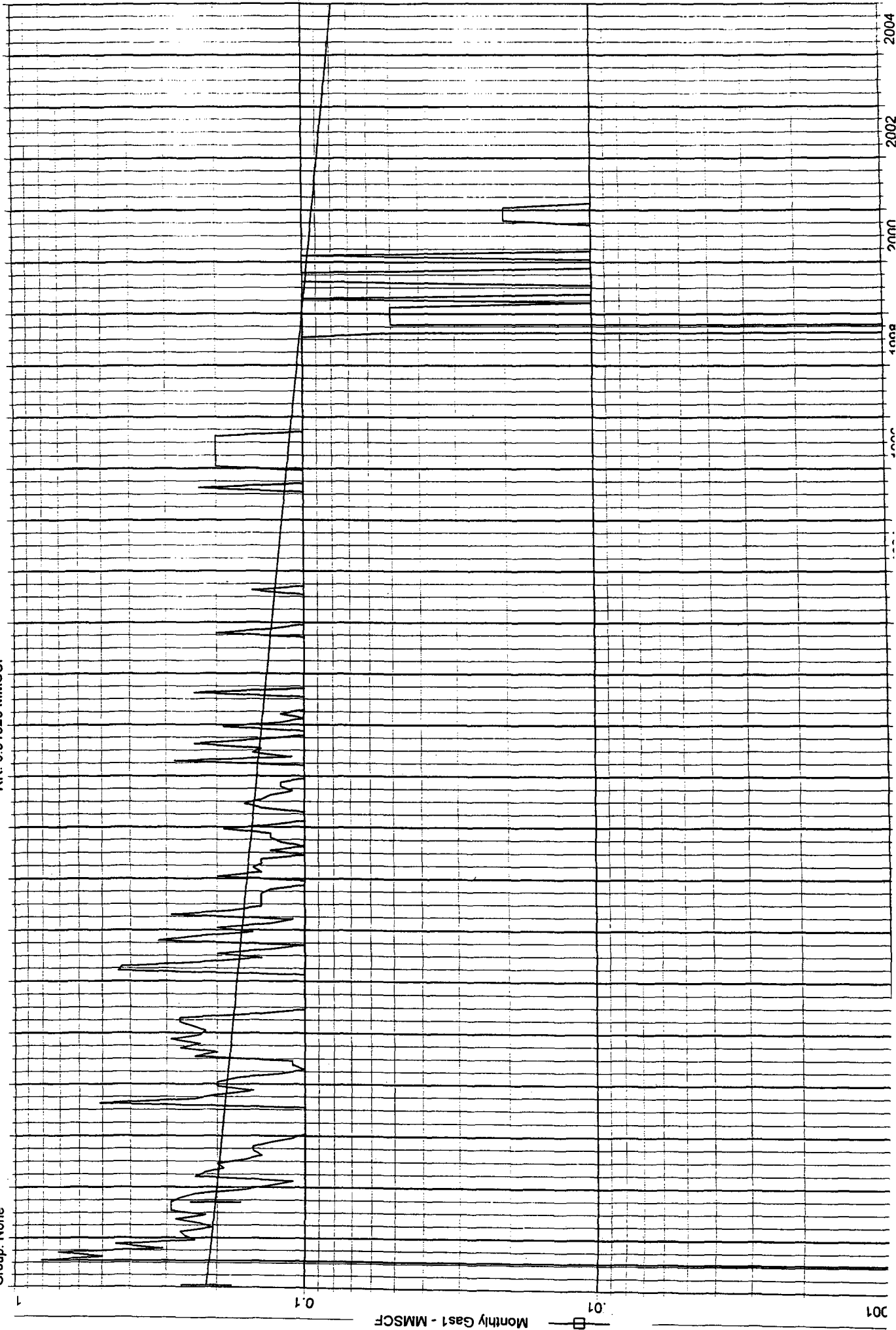
qi: 0.203658 MMSCF, Sep. 1981

qf: 0.057838 MMSCF, Jul. 2012

di(Exp): 4

RR: 9.91526 MMSCF

Production Cums
Oil: 0 MSTB
Gas: 34.76 MMSCF
Water: 0 MSTB
Cond: 0 MSTB



DUSENBERRY 3E DK (246851300296.906) Data: Jan. 1980-Mar. 2001

Operator: BURLINGTON RESOURCES OG CO LP
 Field: BASIN DAKOTA (PRORATED GAS)
 Zone:
 Type: Gas
 Group: Well: wells3

dk (Rate-Time)
 qi: 4.65694 MMSCF, Apr, 1981
 qf: 0.456904 MMSCF, Mar, 2015
 di(Hyp): 23
 RR: 114.113 MMSCF

Production Cums
 Oil: 0 MSTB
 Gas: 522.675 MMSCF
 Water: 0 MSTB
 Cond: 0 MSTB

