

BURLINGTON RESOURCES

New Mexico Oil Conservation Division
1000 Rio Brazos Road
Aztec, New Mexico 87410

Re: Grenier B #4E
NENW, Section 4, T-29-N, R-10-W
30-045-29406

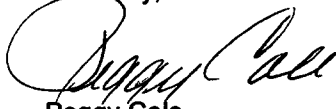
Gentlemen:

The above referenced well is a Chacra/Mesaverde/Dakota commingle. Attached is a copy of the allocation for the commingling of the subject well completed on March 20, 2002. DHC-2969 was issued for this well.

Gas:	Dakota	33%
	Mesaverde	61%
	Chacra	6%
Oil:	Dakota	100%
	Mesaverde	0%
	Chacra	0%

These percentages are based upon reserves assigned to each formation founded on production from the respective formations before and after workover operations and separator tests completed on the Chacra and Mesaverde formations. Since condensate production did not increase with the addition of the Chacra and Mesaverde formations, condensate remains allocated solely to the Dakota formation. Please let me know if you have any questions.

Sincerely,



Peggy Cole
Regulatory Supervisor

Xc: NMOCD – Santa Fe
Bureau of Land Management

Production Allocation Documentation

Grenier B #4E

Production Allocation

Based on Remaining Reserves

Mesaverde Recomplete March 2002

GAS

	<u>RR</u>	<u>Allocation %</u>
Dakota	467.1	33%
All	<u>1,422.4</u>	
Chacra / Mesaverde	955.3	

SEPARATOR TEST

Chacra	113	9%
Mesaverde	<u>1120</u>	91%
Total	1233	

FINAL ALLOCATION

Chacra	87.6	6%
Mesaverde	867.8	61%

Condensate

Since condensate did not increase with the addition of the Chacra and Mesaverde formations, condensate remains allocated solely to the Dakota formation.

GRENIER B 4E (ALL) (GRENIER B 4E (MV)) Data: Apr.2002-Aug.2002

Operator: BURLINGTON RESOURCES OG CO LP

Field:

Zone:

Type: Gas

Group: allocs

Alloc ALL (Rate-Time)

qi: 21.5193 MMSCF, Apr, 2002

qf: 0.45701 MMSCF, Jun, 2051

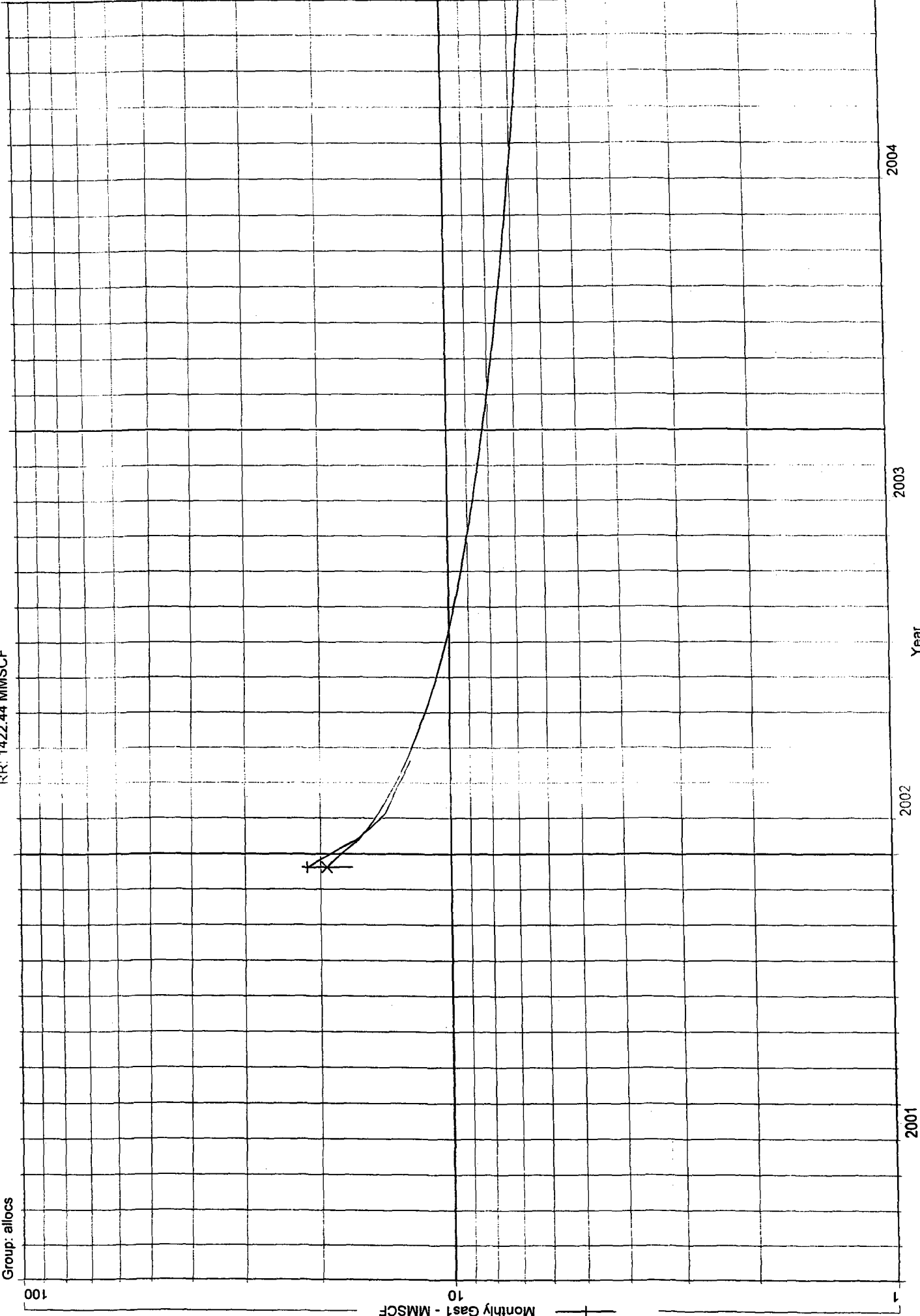
di(Hyp): 57

RR: 1422.44 MMSCF

Production Cums
Oil: 0 MSTB

Water: 0 MSTB

Cond: 0 MSTB



GRENIER B 4E 6125601 (321676974333.329) Data: Mar. 1997-Jan. 2002

Operator: BURLINGTON RESOURCES OG CO LP
 Field: BASIN DAKOTA (PRORATED GAS)
 Zone:
 Type: Gas
 Group: None

DK Alloc (Rate-Time)
 qi: 8.61381 MMSCF, Apr, 1997
 qf: 0.456813 MMSCF, Oct, 2036
 di(Hyp): 50
 RR: 467.125 MMSCF

Production Cumis
 Oil: 0 MSTB
 Water: 0 MSTB
 Cond: 0 MSTB

