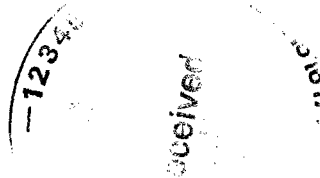




ENVIRONMENTAL PLUS, INC.
CONSULTING AND REMEDIAL CONSTRUCTION

31 October 2006

Mr. Larry Johnson
Environmental Engineer Specialist
New Mexico Oil Conservation Division
1625 North French Drive
Hobbs, NM 88240



RE: Apache Corporation- North Monument Grayburg San Andres Unit #603

NMOCD 1RP #1019; EPI Ref. #240014

UL-C (NE¼ of the NW¼) of Section 20, Township 19 South, Range 37 East

Latitude N 32° 39'04.30" and Longitude W 103° 16' 33.43"

Dear Mr. Johnson:

To address concerns presented by the NMOCD during a recent site visit, EPI submits this letter-addendum to supplement the *Delineation Proposal* for the above referenced site. Environmental Plus, Inc., on behalf of Apache Corporation, propose the advancement of one additional soil boring (SB-4) in the ephemeral pond/pooling area immediately south of the southern extent of the release area (reference *Figure 3*). The soil boring will be advanced until two consecutive samples indicate soil hydrocarbon and chloride concentrations are below remedial thresholds.

Driving directions are as follows:

From the intersection of NMSR 8 and Lea County Road 322 in Monument, New Mexico, go north on NMSR 8 for 1.6 miles; then left through cattle guard 0.7 miles; then left 0.1 miles; then right .1 miles to the work location.

Upon approval, EPI will implement activities outlined in the *Delineation Proposal* and this addendum letter. EPI will provide the NMOCD with 48 hour notification prior to the implementation of delineation activities.

11.7.06
WORKPLAN APPROVED
WORK TO BE COMPLETED
BY MARCH 6, 2007
OCD [Signature]

Should you have any questions or concerns, please feel free to contact me at (505) 394-3481 or via e-mail at jstegemoller@envplus.net. All official correspondence should be submitted to Mike Warren at:

Apache Corporation
17 Hess Lane
Monument, NM 88262

(505) 393-2144
mike.warren@apachecorp.com

Sincerely,

ENVIRONMENTAL PLUS, INC.



Jason Stegemoller
Environmental Scientist

cc: David Woolf, Apache – Houston, TX
Guinn Burks, Apache – Wink, TX
Mike Warren, Apache – Monument, NM
Jimmy Cooper – Monument, NM
File

encl. Figure 1 – Area Map
Figure 2 – Site Location Map
Figure 3 – Proposed Soil Boring Location Map
Attachment I – Site Photographs

FIGURES

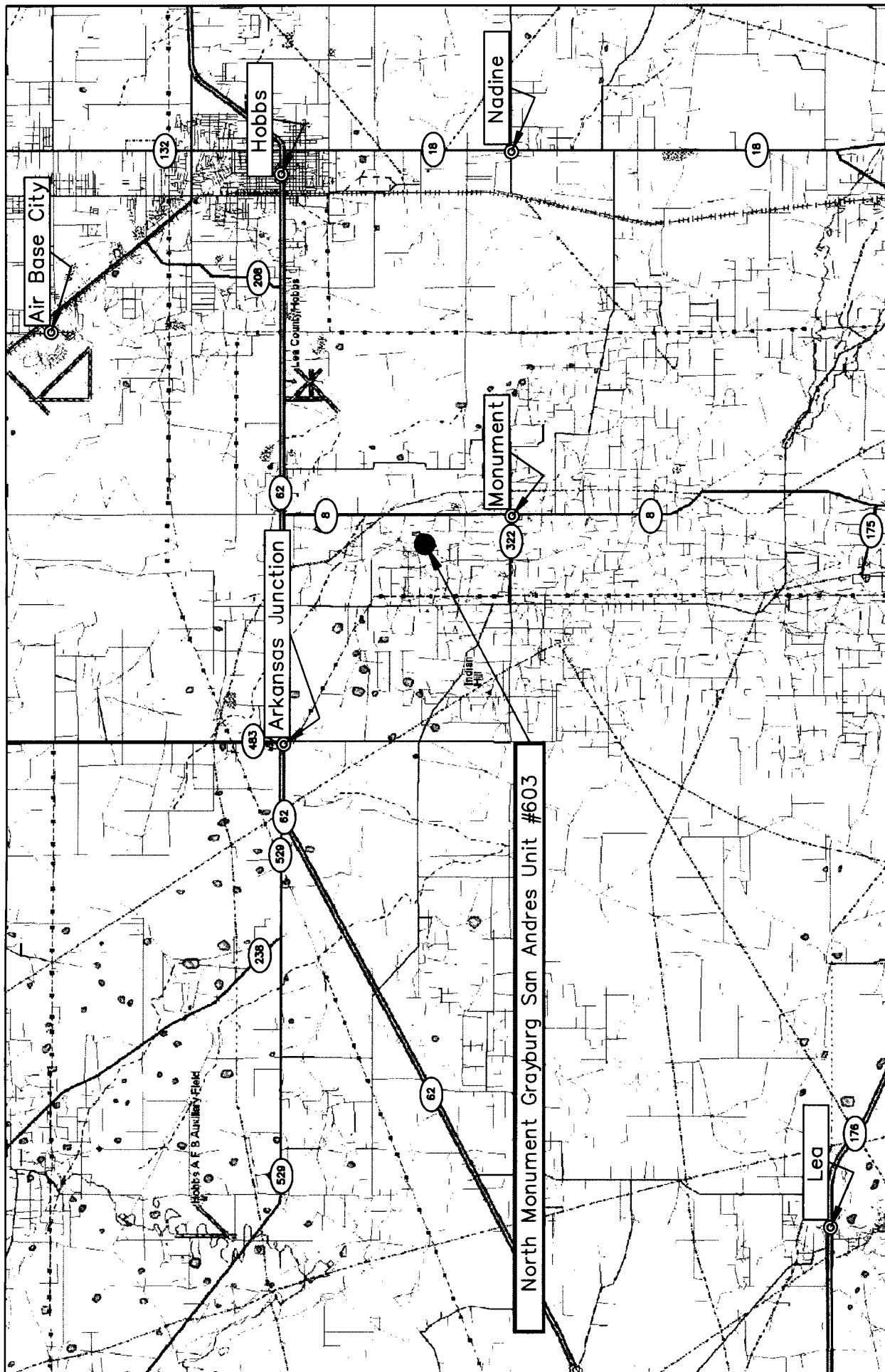
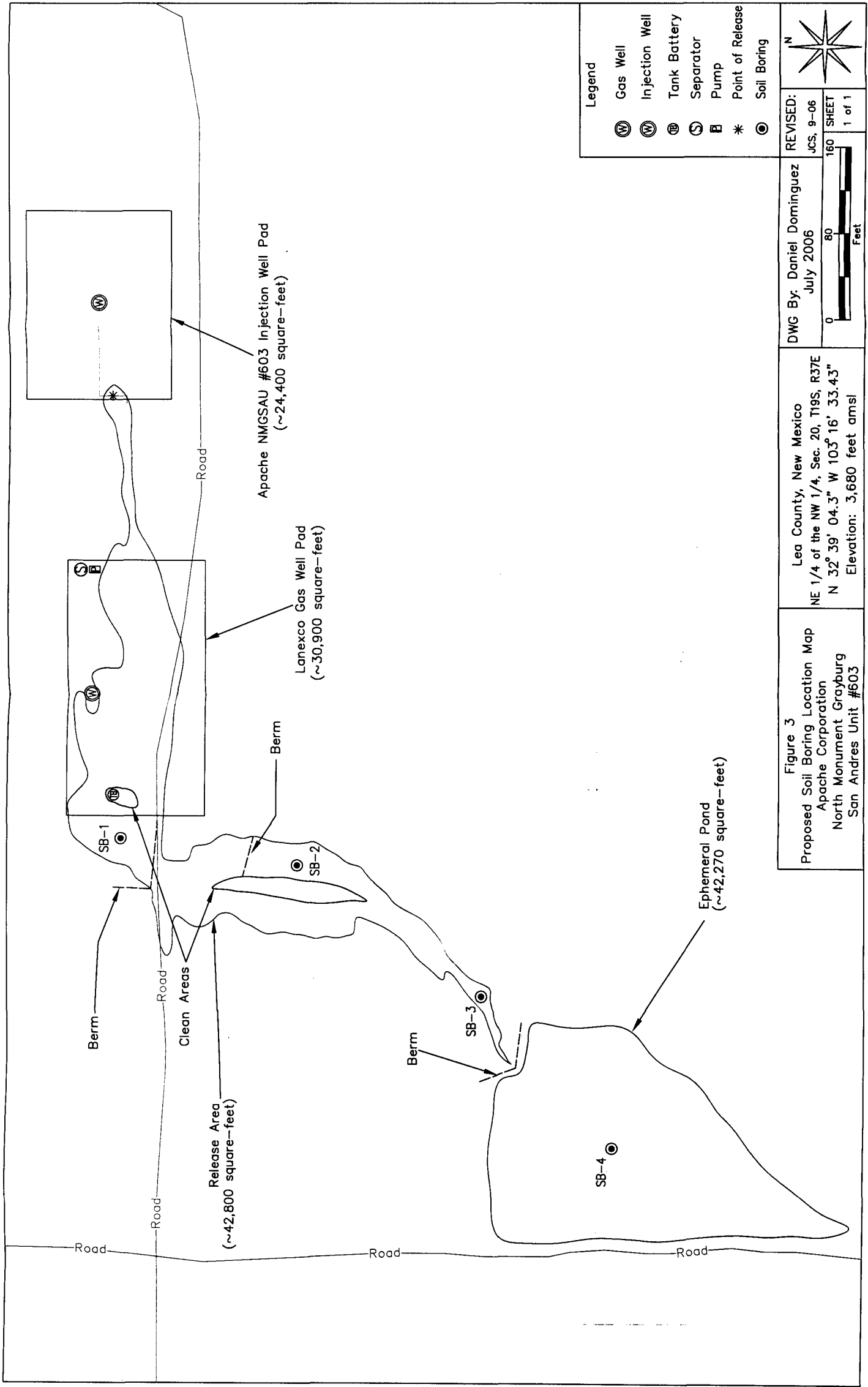


Figure 1
 Area Map
 Apache Corporation
 North Monument Grayburg
 San Andres Unit #603

Lea County, New Mexico
 NE 1/4 of the NW 1/4, Sec. 20, T19S, R37E
 N 32° 39' 04.3" W 103° 16' 33.43"
 Elevation: 3,680 feet amsl

DWG By: Daniel Dominguez July 2006	REVISED:
0 3 6 Miles	SHEET 1 of 1

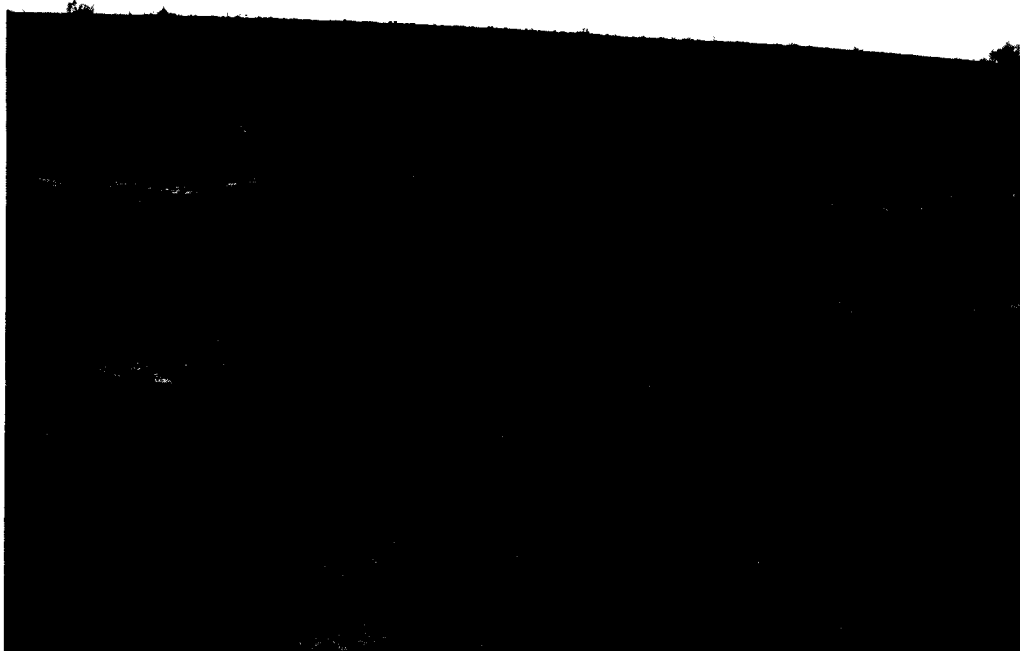


ATTACHMENT I

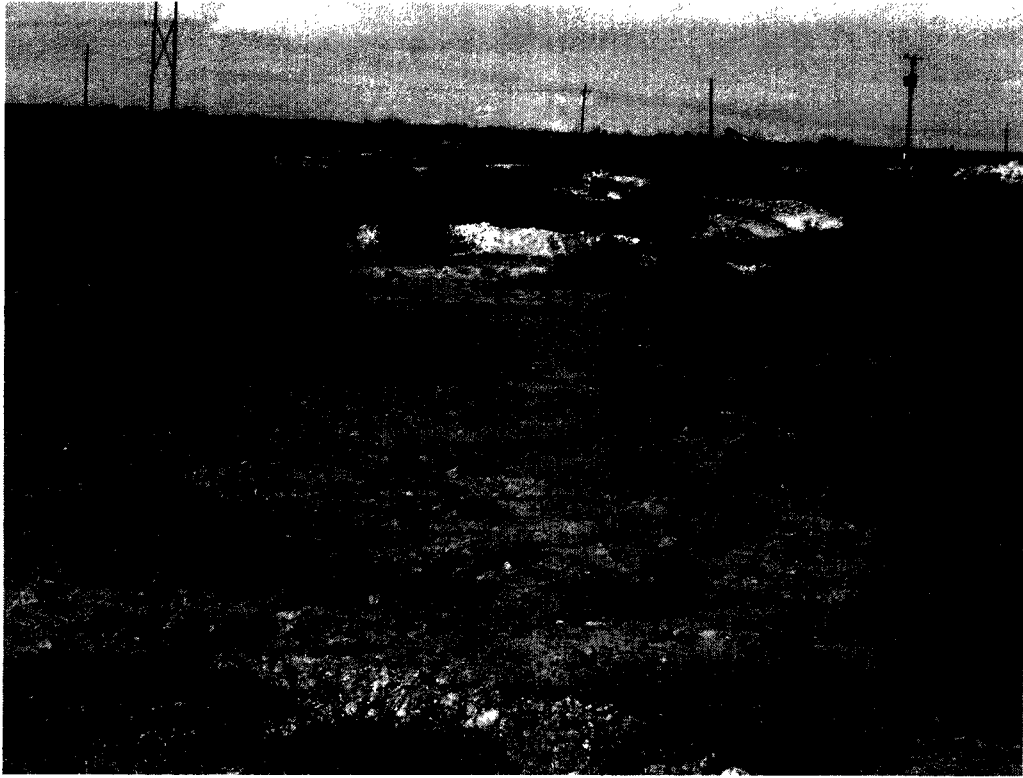
SITE PHOTOGRAPHS



Photograph #1- Looking northerly across ephemeral pond. Berm is southern most point of release area.



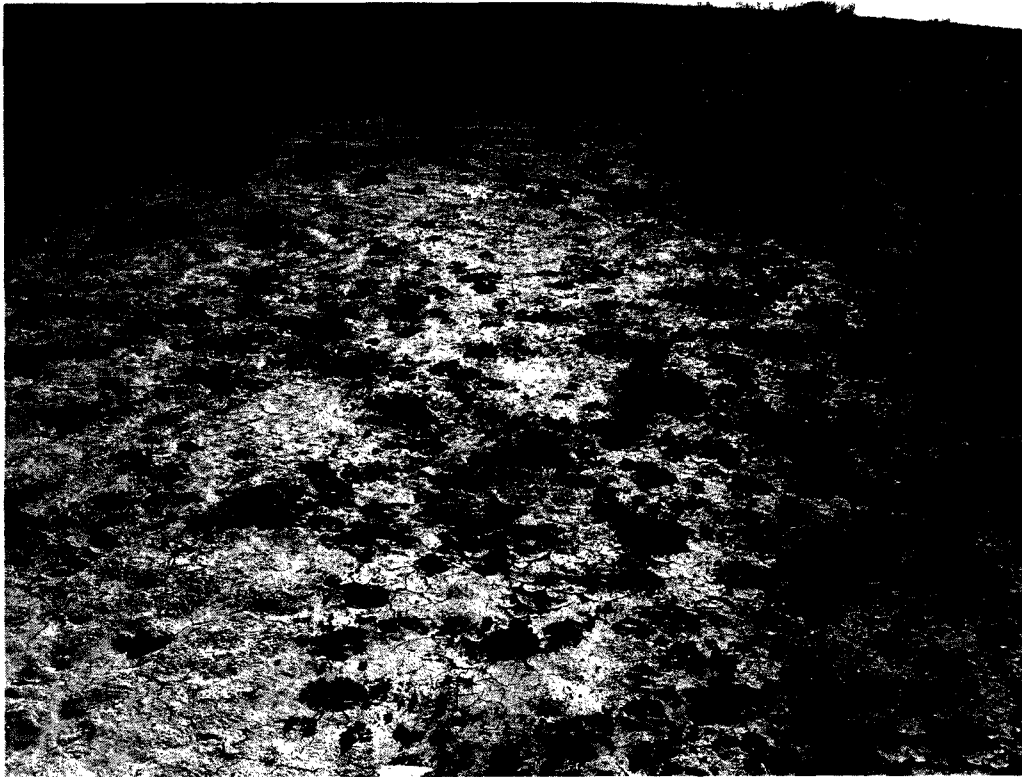
Photograph #2- Looking westerly at southern most berm and ephemeral pond.



Photograph #3- Looking northeasterly across ephemeral pond.



Photograph #4- Looking west-southwesterly across ephemeral pond.



Photograph #5- Looking westerly across ephemeral pond.



Photograph #6- Looking easterly across ephemeral pond.
