

DATE IN 1/16/07	SUSPENSE	ENGINEER BROOKS	LOGGED IN 1/16/07	TYPE NSL	APP NO. PTDS0701648556
--------------------	----------	--------------------	----------------------	-------------	---------------------------

ABOVE THIS LINE FOR DIVISION USE ONLY

NEW MEXICO OIL CONSERVATION DIVISION
- Engineering Bureau -
 1220 South St. Francis Drive, Santa Fe, NM 87505



*Torch
Cooper Jail Unit 501-504
5560*

ADMINISTRATIVE APPLICATION CHECKLIST

THIS CHECKLIST IS MANDATORY FOR ALL ADMINISTRATIVE APPLICATIONS FOR EXCEPTIONS TO DIVISION RULES AND REGULATIONS WHICH REQUIRE PROCESSING AT THE DIVISION LEVEL IN SANTA FE

Application Acronyms:

[NSL-Non-Standard Location] [NSP-Non-Standard Proration Unit] [SD-Simultaneous Dedication]
[DHC-Downhole Commingling] [CTB-Lease Commingling] [PLC-Pool/Lease Commingling]
[PC-Pool Commingling] [OLS - Off-Lease Storage] [OLM-Off-Lease Measurement]
[WFX-Waterflood Expansion] [PMX-Pressure Maintenance Expansion]
[SWD-Salt Water Disposal] [IPI-Injection Pressure Increase]
[EOR-Qualified Enhanced Oil Recovery Certification] [PPR-Positive Production Response]

[1] TYPE OF APPLICATION - Check Those Which Apply for [A]

- [A] Location - Spacing Unit - Simultaneous Dedication
☒ NSL ☐ NSP ☐ SD

Check One Only for [B] or [C]

- [B] Commingling - Storage - Measurement
☐ DHC ☐ CTB ☐ PLC ☐ PC ☐ OLS ☐ OLM

- [C] Injection - Disposal - Pressure Increase - Enhanced Oil Recovery
☐ WFX ☐ PMX ☐ SWD ☐ IPI ☐ EOR ☐ PPR

- [D] Other: Specify _____

[2] NOTIFICATION REQUIRED TO: - Check Those Which Apply, or Does Not Apply

- [A] ☐ Working, Royalty or Overriding Royalty Interest Owners
- [B] ☐ Offset Operators, Leaseholders or Surface Owner
- [C] ☐ Application is One Which Requires Published Legal Notice
- [D] ☐ Notification and/or Concurrent Approval by BLM or SLO
U.S. Bureau of Land Management - Commissioner of Public Lands, State Land Office
- [E] ☐ For all of the above, Proof of Notification or Publication is Attached, and/or,
- [F] ☐ Waivers are Attached

[3] SUBMIT ACCURATE AND COMPLETE INFORMATION REQUIRED TO PROCESS THE TYPE OF APPLICATION INDICATED ABOVE.

[4] CERTIFICATION: I hereby certify that the information submitted with this application for administrative approval is **accurate** and **complete** to the best of my knowledge. I also understand that **no action** will be taken on this application until the required information and notifications are submitted to the Division.

Note: Statement must be completed by an individual with managerial and/or supervisory capacity.

Print or Type Name _____	Signature _____	Title _____	Date _____
e-mail Address _____			

EXHIBIT #1

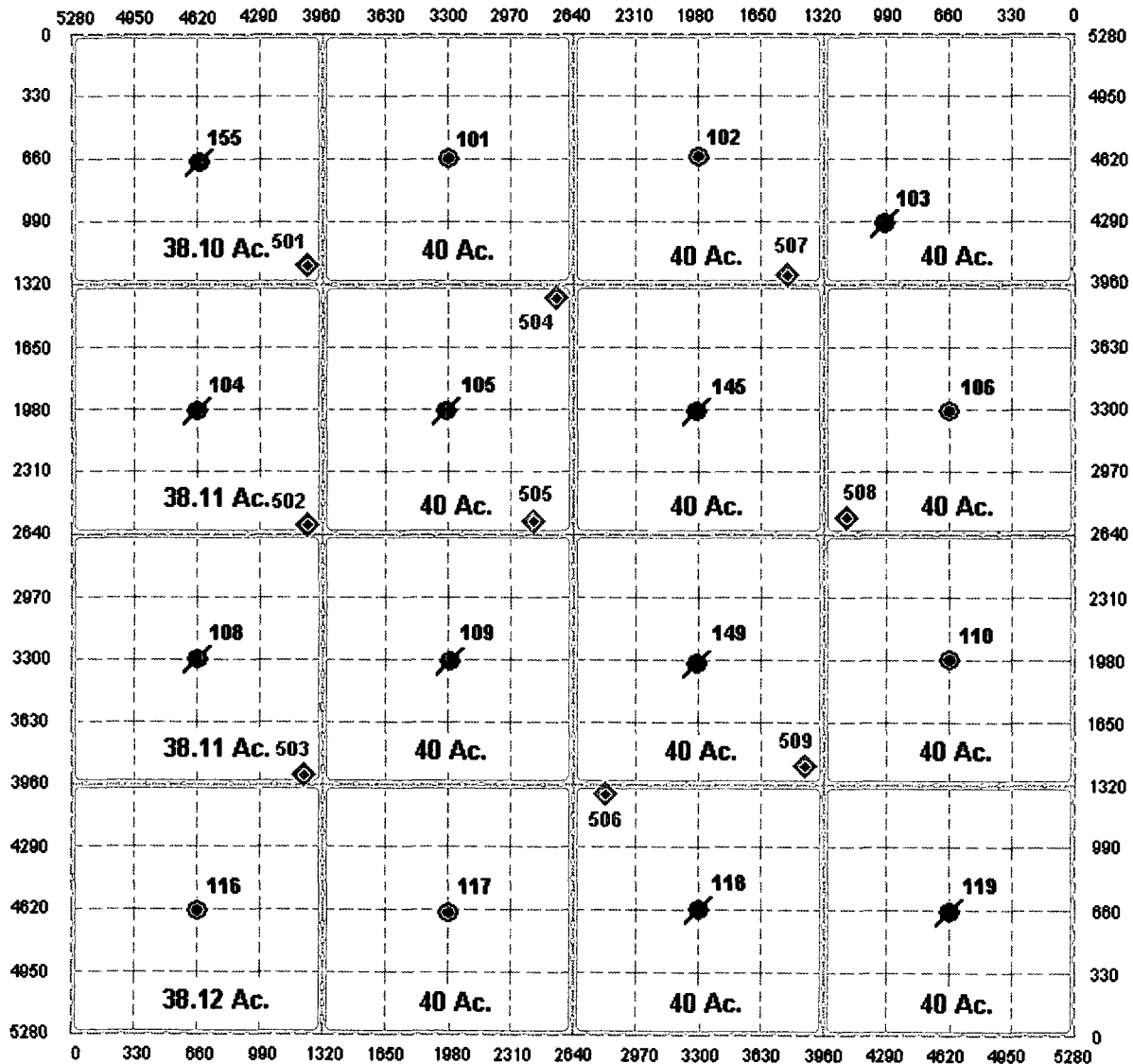
COOPER JAL UNIT

SECTION 18, T-24-S, R-37-E, NMPM

LEA COUNTY, NM

2006 - 2007 DRILLING LOCATIONS

	DRILLING LOCATION		PRODUCER		TA'd WELL		P&A'd WELL
 OIL WELL SPACING UNIT BOUNDARY							



TORCH ENERGY SERVICES, INC.

DISTRICT I
1625 N. French Dr., Hobbs, NM 88240

DISTRICT II
1301 W. Grand Ave., Artesia, NM 88210

DISTRICT III
1000 Rio Brazos Rd., Aztec, NM 87410

DISTRICT IV
1220 St. Francis Dr., Santa Fe, NM 87505

State of New Mexico
Energy, Minerals and Natural Resources Department

Form C-102
Revised October 12, 2005

Submit to Appropriate District Office
State Lease-4 copies
Fee Lease-3 copies

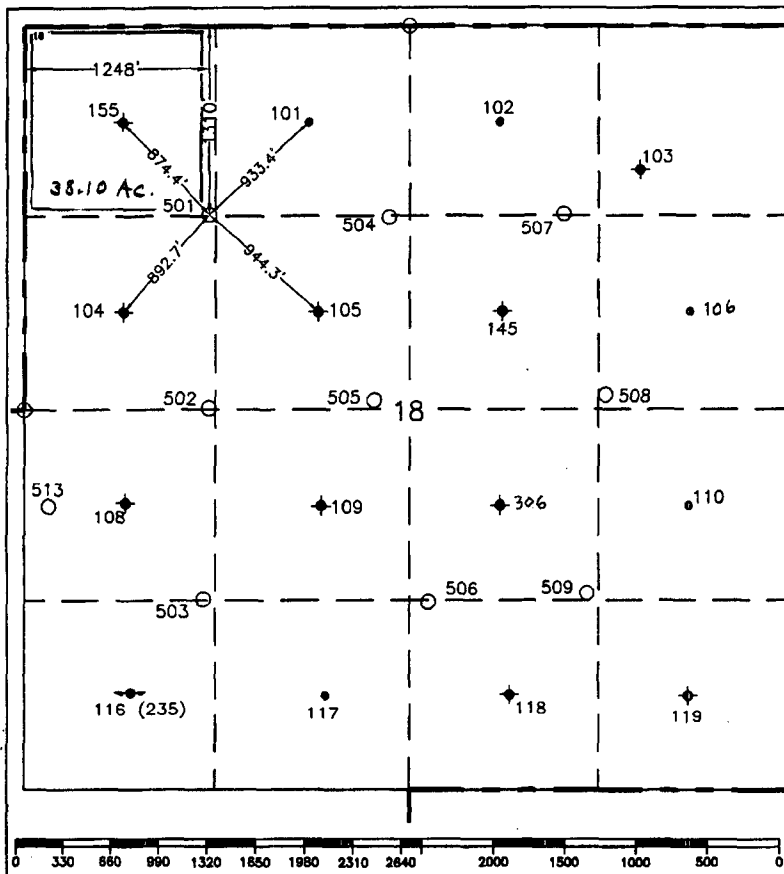
OIL CONSERVATION DIVISION
1220 South St. Francis Drive
Santa Fe, NM 87505

☐ AMENDED REPORT

WELL LOCATION AND ACREAGE DEDICATION PLAT

1 API Number		2 Pool Code		3 Pool Name	
				Jalmit; Langlie Mattix	
4 Property Code		5 Property Name			6 Well Number
		Cooper Jal Unit			501
7 GRID No.		8 Operator Name			9 Elevation
193003		TORCH ENERGY SERVICES, INC.			3300'
10 Surface Location					
UL or lot no.	Section	Township	Range	Lot Idn	Feet from the North/South line
D	18	24-S	37-E		1310'
				Feet from the East/West line	1248'
				County	Lea
11 Bottom Hole Location If Different From Surface					
UL or lot no.	Section	Township	Range	Lot Idn	Feet from the North/South line
12 Dedicated Acres		13 Joint or Infill		14 Consolidation Code	
40				15 Order No.	

NO ALLOWABLE WILL BE ASSIGNED TO THIS COMPLETION UNTIL ALL INTERESTS HAVE BEEN CONSOLIDATED
OR A NON-STANDARD UNIT HAS BEEN APPROVED BY THE DIVISION.



17 OPERATOR CERTIFICATION
I hereby certify that the information contained herein is true and complete to the best of my knowledge and belief, and that this organization either owns a working interest or unleased mineral interest in the land including the proposed bottom hole location or has a right to drill this well at this location pursuant to a contract with an owner of such a mineral or working interest or to a voluntary pooling agreement or a compulsory pooling order heretofore entered by the division.

Jim Kidd 10/30/06
Signature Date

Jim Kidd
Printed Name

18 SURVEYOR CERTIFICATION

I hereby certify that the well location shown on this plat was plotted from field notes of actual surveys made by me or under my supervision, and that the same is true and correct to the best of my knowledge and belief.

September 19 & 21, 2006

Date of Survey

Signature & Seal of Professional Surveyor:

John P. Kidd
Certificate No. 7254

○ = Staked Location • = Producing Well ◆ = Injection Well ◊ = Water Supply Well ♦ = Plugged & Abandon Well
⊙ = Found Section Corner, 2 or 3" Iron Pipe & GLO B.C. ○ = Found 1/4 Section Corner, 1" Iron Pipe & GLO B.C.

ADDITIONAL INFORMATION ON THE LOCATION

State Plane Coordinates			
Northing 445982.02		Easting 889871.59	
Latitude 32°13'15.803"		Longitude 103°12'22.701"	
Zone	North American Datum	Combined Grid Factor	Coordinate File
East	1983/86	0.99988900	Coop_Jal.Crd
Drawing File		Field Book	
Coop_Jal.Dwg		LEA #24, Pg. 1	

DISTRICT I
1825 N. French Dr., Hobbs, NM 88240

DISTRICT II
1301 W. Grand Ave., Artesia, NM 88210

DISTRICT III
1000 Rio Brazos Rd., Aztec, NM 87410

DISTRICT IV
1220 St. Francis Dr., Santa Fe, NM 87505

State of New Mexico
Energy, Minerals and Natural Resources Department

Form C-102
Revised October 12, 2005

Submit to Appropriate District Office
State Lease-4 copies
Fee Lease-3 copies

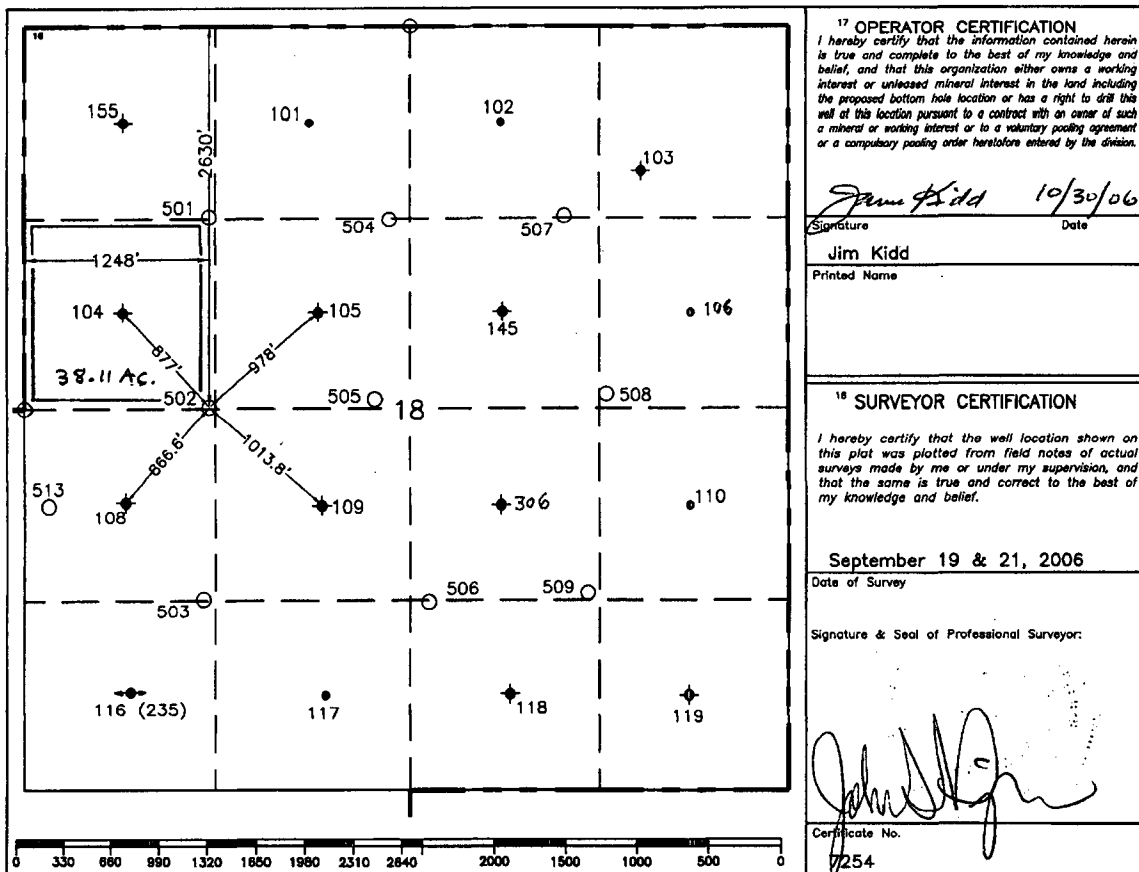
OIL CONSERVATION DIVISION
1220 South St. Francis Drive
Santa Fe, NM 87505

☐ AMENDED REPORT

WELL LOCATION AND ACREAGE DEDICATION PLAT

1 API Number		2 Pool Code		3 Pool Name	
				Jalmat; Langlie Mattix	
4 Property Code		5 Property Name			6 Well Number
		Cooper Jal Unit			502
7 OGRID No.		8 Operator Name			9 Elevation
193003		TORCH ENERGY SERVICES, INC.			3300'
10 Surface Location					
UL or lot no.	Section	Township	Range	Lot Idn	Feet from the
E	18	24-S	37-E		2630'
				North/South line	Feet from the
				North	1248.9'
				East/West line	Feet from the
				West	
				7 County	
				Lea	
11 Bottom Hole Location If Different From Surface					
UL or lot no.	Section	Township	Range	Lot Idn	Feet from the
					North/South line
					Feet from the
					East/West line
					7 County
12 Dedicated Acres		13 Joint or Infill		14 Consolidation Code	
40				15 Order No.	

NO ALLOWABLE WILL BE ASSIGNED TO THIS COMPLETION UNTIL ALL INTERESTS HAVE BEEN CONSOLIDATED
OR A NON-STANDARD UNIT HAS BEEN APPROVED BY THE DIVISION.



○ = Staked Location • = Producing Well ● = Injection Well ◇ = Water Supply Well ◆ = Plugged & Abandon Well
⊙ = Found Section Corner, 2 or 3" Iron Pipe & GLO B.C. ○ = Found 1/4 Section Corner, 1" Iron Pipe & GLO B.C.

ADDITIONAL INFORMATION ON THE LOCATION

State Plane Coordinates			
Northing 444662.08		Easting 889888.26	
Latitude 32°13'02.741"		Longitude 103°12'22.668"	
Zone	North American Datum	Combined Grid Factor	Coordinate File
East	1983/86	0.99988900	Coop_Jal.Crd
Drawing File		Field Book	
Coop_Jal.Dwg		LEA #24, Pg. 2	

DISTRICT I
1625 N. French Dr., Hobbs, NM 88240

DISTRICT II
1301 W. Grand Ave., Artesia, NM 88210

DISTRICT III
1000 Rio Brazos Rd., Aztec, NM 87410

DISTRICT IV
1220 St. Francis Dr., Santa Fe, NM 87505

State of New Mexico
Energy, Minerals and Natural Resources Department

Form C-102
Revised October 12, 2005

WELL LOCATION AND ACREAGE DEDICATION PLAT
1220 South St. Francis Drive
Santa Fe, NM 87505

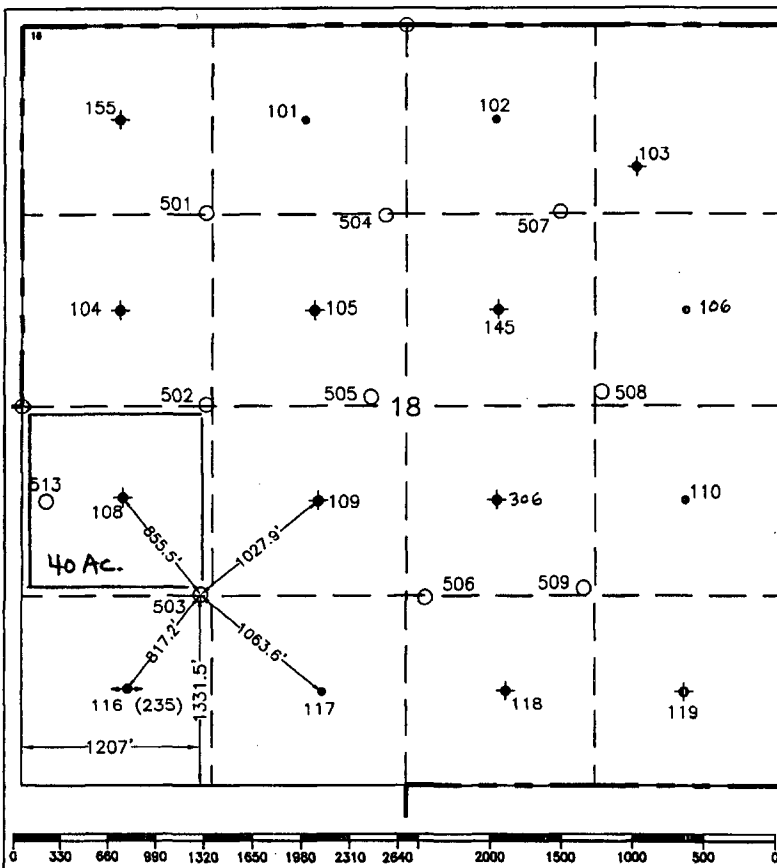
Submit to Appropriate District Office
State Lease-4 copies
Fee Lease-3 copies

☐ AMENDED REPORT

WELL LOCATION AND ACREAGE DEDICATION PLAT

1 API Number		2 Pool Code		3 Pool Name	
				Jalmat; Langlie Mattix	
4 Property Code		5 Property Name			6 Well Number
		Cooper Jal Unit			503
7 OGRID No.		8 Operator Name			9 Elevation
193003		TORCH ENERGY SERVICES, INC.			3305'
10 Surface Location					
UL or lot no.	Section	Township	Range	Lot Idn	Feet from the
L	18	24-S	37-E		1331.5'
				North/South line	Feet from the
				South	1207'
				East/West line	County
				West	Lea
11 Bottom Hole Location If Different From Surface					
UL or lot no.	Section	Township	Range	Lot Idn	Feet from the
12 Dedicated Acres					
40					
13 Joint or Infill					
14 Consolidation Code					
15 Order No.					

NO ALLOWABLE WILL BE ASSIGNED TO THIS COMPLETION UNTIL ALL INTERESTS HAVE BEEN CONSOLIDATED
OR A NON-STANDARD UNIT HAS BEEN APPROVED BY THE DIVISION.



17 OPERATOR CERTIFICATION	
I hereby certify that the information contained herein is true and complete to the best of my knowledge and belief, and that this organization either owns a working interest or unleased mineral interest in the land including the proposed bottom hole location or has a right to drill this well at this location pursuant to a contract with an owner of such a mineral or working interest or to a voluntary pooling agreement or a compulsory pooling order heretofore entered by the division.	
Signature	Date
Jim Kidd	10/30/06
Printed Name	
18 SURVEYOR CERTIFICATION	
I hereby certify that the well location shown on this plat was plotted from field notes of actual surveys made by me or under my supervision, and that the same is true and correct to the best of my knowledge and belief.	
September 19 & 21, 2006	
Date of Survey	
Signature & Seal of Professional Surveyor:	
Certificate No.	
7254	

○ = Staked Location • = Producing Well ● = Injection Well ◊ = Water Supply Well ♦ = Plugged & Abandon Well
⊙ = Found Section Corner, 2 or 3" Iron Pipe & GLO B.C. ○ = Found 1/4 Section Corner, 1" Iron Pipe & GLO B.C.

ADDITIONAL INFORMATION ON THE LOCATION

State Plane Coordinates	
Northing 443340.21	Easting 889865.03
Latitude 32°12'49.665"	
Longitude 103°12'23.099"	
Zone	North American Datum
East	1983/86
Combined Grid Factor	Coordinate File
0.99988900	Coop_Jal.Crd
Drawing File	Field Book
Coop_Jal.Dwg	LEA #24, Pg. 3

DISTRICT I
1625 N. French Dr., Hobbs, NM 88240

DISTRICT II
1301 W. Grand Ave., Artesia, NM 88210

DISTRICT III
1000 Rio Brazos Rd., Aztec, NM 87410

DISTRICT IV
1220 St. Francis Dr., Santa Fe, NM 87505

State of New Mexico
Energy, Minerals and Natural Resources Department

Form C-102
Revised October 12, 2005

Submit to Appropriate District Office
State Lease-4 copies
Fee Lease-3 copies

OIL CONSERVATION DIVISION
1220 South St. Francis Drive
Santa Fe, NM 87505

☐ AMENDED REPORT

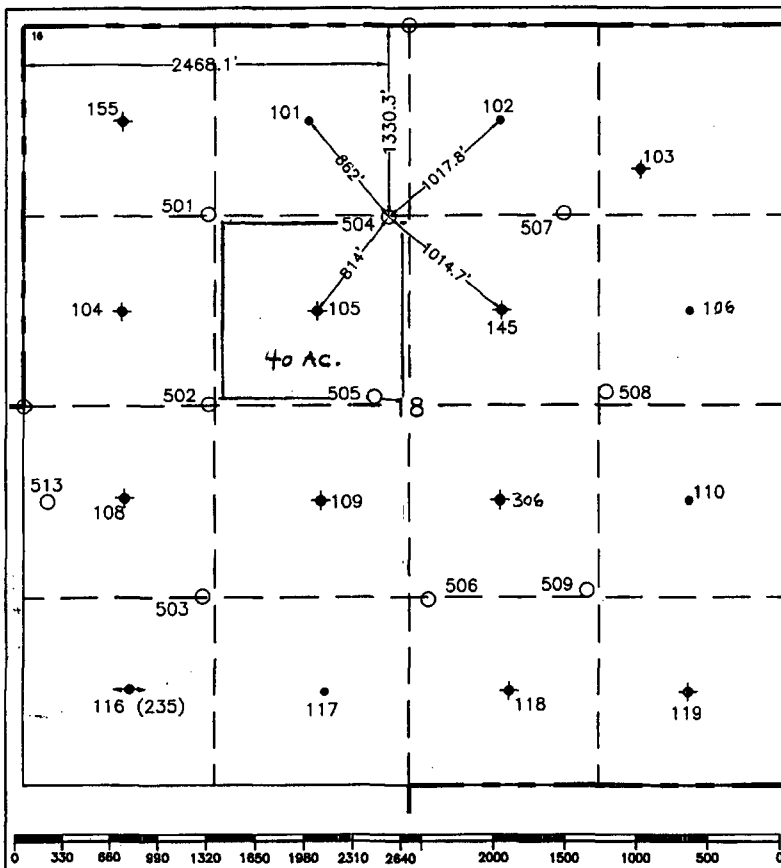
WELL LOCATION AND ACREAGE DEDICATION PLAT

¹ API Number		² Pool Code		³ Pool Name	
				Jalmat; Langlie Mattix	
⁴ Property Code		⁵ Property Name			⁶ Well Number
		Cooper Jal Unit			504
⁷ GRID No.		⁸ Operator Name			⁹ Elevation
193003		TORCH ENERGY SERVICES, INC.			3296'

¹⁰ Surface Location									
UL or lot no.	Section	Township	Range	Lot Idn	Feet from the	North/South line	Feet from the	East/West line	County
F	18	24-S	37-E		1330.3'	North	2468.1'	West	Lea

¹¹ Bottom Hole Location If Different From Surface									
UL or lot no.	Section	Township	Range	Lot Idn	Feet from the	North/South line	Feet from the	East/West line	County
¹² Dedicated Acres		¹³ Joint or Infill		¹⁴ Consolidation Code		¹⁵ Order No.			
40									

NO ALLOWABLE WILL BE ASSIGNED TO THIS COMPLETION UNTIL ALL INTERESTS HAVE BEEN CONSOLIDATED
OR A NON-STANDARD UNIT HAS BEEN APPROVED BY THE DIVISION.



¹⁷ OPERATOR CERTIFICATION
I hereby certify that the information contained herein is true and complete to the best of my knowledge and belief, and that this organization either owns a working interest or unleased mineral interest in the land including the proposed bottom hole location or has a right to drill this well at this location pursuant to a contract with an owner of such a mineral or working interest or to a voluntary pooling agreement or a compulsory pooling order heretofore entered by the division.

Jim Kidd 10/3/06
Signature Date

Jim Kidd
Printed Name

¹⁸ SURVEYOR CERTIFICATION

I hereby certify that the well location shown on this plat was plotted from field notes of actual surveys made by me or under my supervision, and that the same is true and correct to the best of my knowledge and belief.

September 19 & 21, 2006
Date of Survey

Signature & Seal of Professional Surveyor:

John S. D...
Certificate No. 7254

○ = Staked Location • = Producing Well ● = Injection Well ◇ = Water Supply Well ◆ = Plugged & Abandon Well
⊙ = Found Section Corner, 2 or 3" Iron Pipe & GLO B.C. ○ = Found 1/4 Section Corner, 1" Iron Pipe & GLO B.C.

ADDITIONAL INFORMATION ON THE LOCATION

State Plane Coordinates			
Northing 445977.02		Easting 891091.90'	
Latitude 32°13'15.626"		Longitude 103°12'08.498"	
Zone	North American Datum	Combined Grid Factor	Coordinate File
East	1983/86	0.99988900	Coop_Jal.Crd
Drawing File		Field Book	
Coop_Jal.Dwg		LEA #24, Pg. 4	

DISTRICT I
1825 N. French Dr., Hobbs, NM 88240

DISTRICT II
1301 W. Grand Ave., Artesia, NM 88210

DISTRICT III
1000 Rio Brazos Rd., Aztec, NM 87410

DISTRICT IV
1220 St. Francis Dr., Santa Fe, NM 87505

State of New Mexico
Energy, Minerals and Natural Resources Department

OIL CONSERVATION DIVISION
1220 South St. Francis Drive
Santa Fe, NM 87505

Form C-102
Revised October 12, 2005

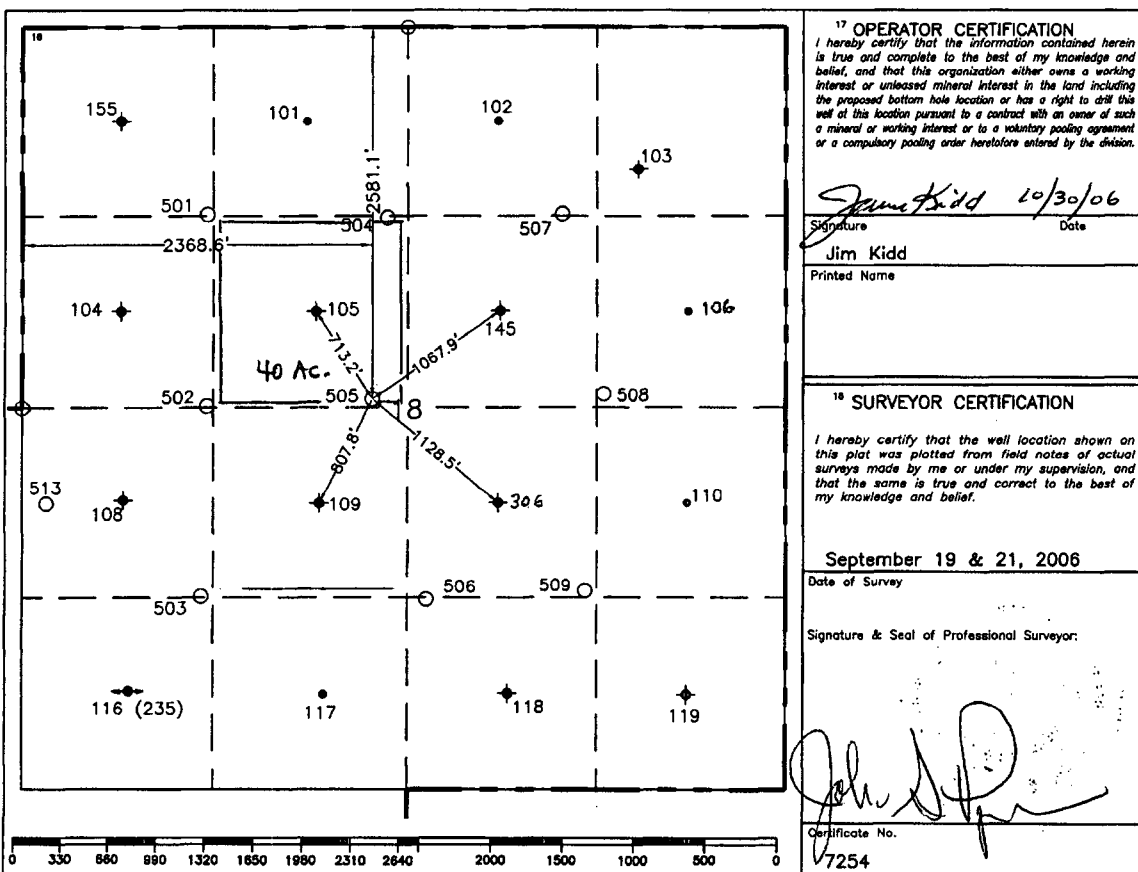
Submit to Appropriate District Office
State Lease-4 copies
Fee Lease-3 copies

☐ AMENDED REPORT

WELL LOCATION AND ACREAGE DEDICATION PLAT

1 API Number		2 Pool Code		3 Pool Name					
				Jalmat; Langlie Mattix					
4 Property Code		5 Property Name			6 Well Number				
		Cooper Jal Unit			505				
7 OGRID No.		8 Operator Name			9 Elevation				
193003		TORCH ENERGY SERVICES, INC.			3301'				
10 Surface Location									
UL or lot no.	Section	Township	Range	Lot Idn	Feet from the	North/South line	Feet from the	East/West line	7 County
F	18	24-S	37-E		2581.1'	North	2368.6'	West	Lea
11 Bottom Hole Location If Different From Surface									
UL or lot no.	Section	Township	Range	Lot Idn	Feet from the	North/South line	Feet from the	East/West line	7 County
12 Dedicated Acres		13 Joint or Infill		14 Consolidation Code		15 Order No.			
40									

NO ALLOWABLE WILL BE ASSIGNED TO THIS COMPLETION UNTIL ALL INTERESTS HAVE BEEN CONSOLIDATED
OR A NON-STANDARD UNIT HAS BEEN APPROVED BY THE DIVISION.



ADDITIONAL INFORMATION ON THE LOCATION

State Plane Coordinates			
Northing 444725.02		Easting 891007.29	
Latitude 32°13'03.248"		Longitude 103°12'09.636"	
Zone	North American Datum	Combined Grid Factor	Coordinate File
East	1983/86	0.99988900	Coop_Jal.Crd
Drawing File		Field Book	
Coop_Jal.Dwg		LEA #24, Pg. 5	

DISTRICT I
1625 N. French Dr., Hobbs, NM 88240

DISTRICT II
1301 W. Grand Ave., Artesia, NM 88210

DISTRICT III
1000 Rio Brazos Rd., Aztec, NM 87410

DISTRICT IV
1220 St. Francis Dr., Santa Fe, NM 87505

State of New Mexico
Energy, Minerals and Natural Resources Department

Form C-102
Revised October 12, 2005

SOIL CONSERVATION DIVISION
1220 South St. Francis Drive
Santa Fe, NM 87505

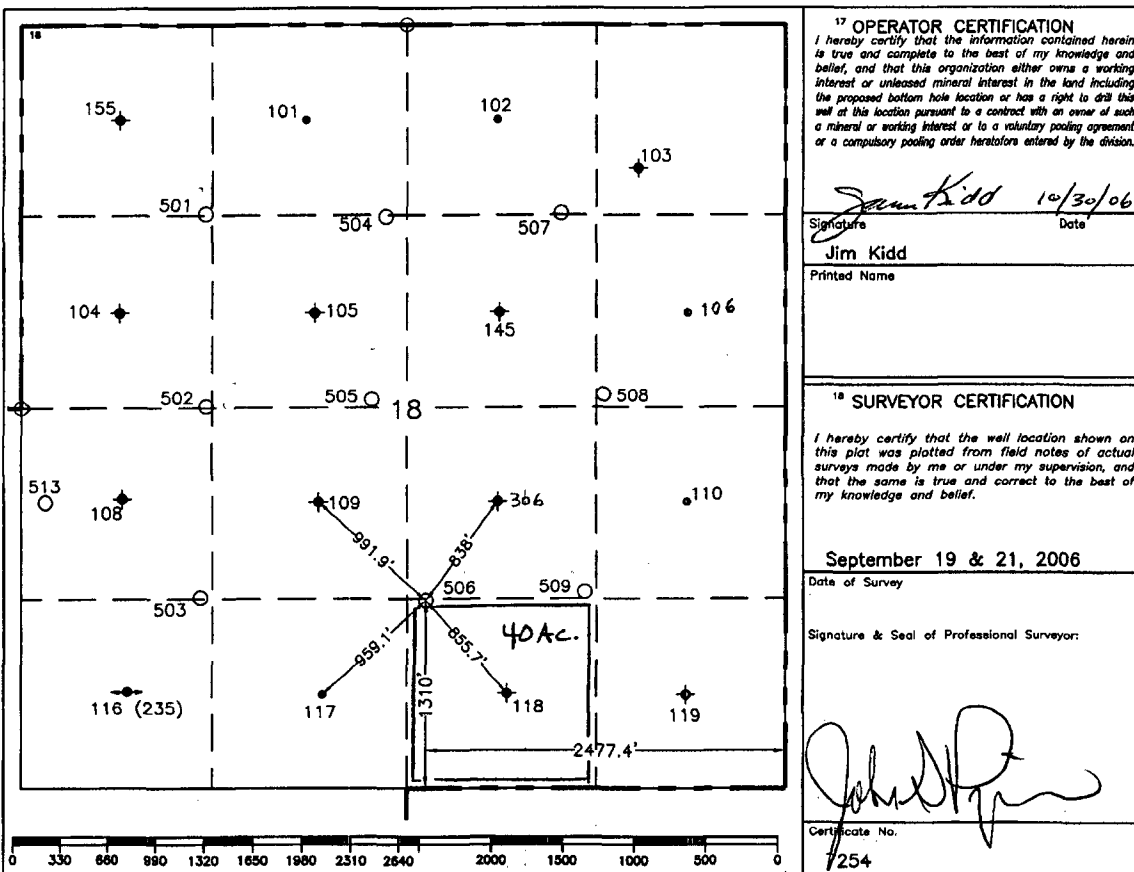
Submit to Appropriate District Office
State Lease-4 copies
Fee Lease-3 copies

☐ AMENDED REPORT

WELL LOCATION AND ACREAGE DEDICATION PLAT

1 API Number		2 Pool Code		3 Pool Name	
				Jalmat; Langlie Mattix	
4 Property Code		5 Property Name			6 Well Number
		Cooper Jal Unit			506
7 GRID No.		8 Operator Name			9 Elevation
193003		TORCH ENERGY SERVICES, INC.			3329'
10 Surface Location					
UL or lot no.	Section	Township	Range	Lot Idn	Feet from the
0	18	24-S	37-E		1310'
				North/South line	East/West line
				South	2477.4'
11 Bottom Hole Location if Different From Surface					
UL or lot no.	Section	Township	Range	Lot Idn	Feet from the
					North/South line
				East/West line	County
					Lea
12 Dedicated Acres		13 Joint or Infill		14 Consolidation Code	
40				15 Order No.	

NO ALLOWABLE WILL BE ASSIGNED TO THIS COMPLETION UNTIL ALL INTERESTS HAVE BEEN CONSOLIDATED
OR A NON-STANDARD UNIT HAS BEEN APPROVED BY THE DIVISION.



○ = Staked Location • = Producing Well ● = Injection Well ◇ = Water Supply Well ◆ = Plugged & Abandon Well
⊙ = Found Section Corner, 2 or 3" Iron Pipe & GLO B.C. ○ = Found 1/4 Section Corner, 1" Iron Pipe & GLO B.C.

ADDITIONAL INFORMATION ON THE LOCATION

State Plane Coordinates			
Northing 443338.31		Easting 891394.95	
Latitude 32°12'49.487"		Longitude 103°12'05.294"	
Zone	North American Datum	Combined Grid Factor	Coordinate File
East	1983/86	0.99988900	Coop_Jal.Crd
Drawing File		Field Book	
Coop_Jal.Dwg		LEA #24, Pg. 6	

DISTRICT I
1625 N. French Dr., Hobbs, NM 88240

DISTRICT II
1301 W. Grand Ave., Artesia, NM 88210

DISTRICT III
1000 Rio Brazos Rd., Aztec, NM 87410

DISTRICT IV
1220 St. Francis Dr., Santa Fe, NM 87505

State of New Mexico
Energy, Minerals and Natural Resources Department

OIL CONSERVATION DIVISION
1220 South St. Francis Drive
Santa Fe, NM 87505

Form C-102
Revised October 12, 2005

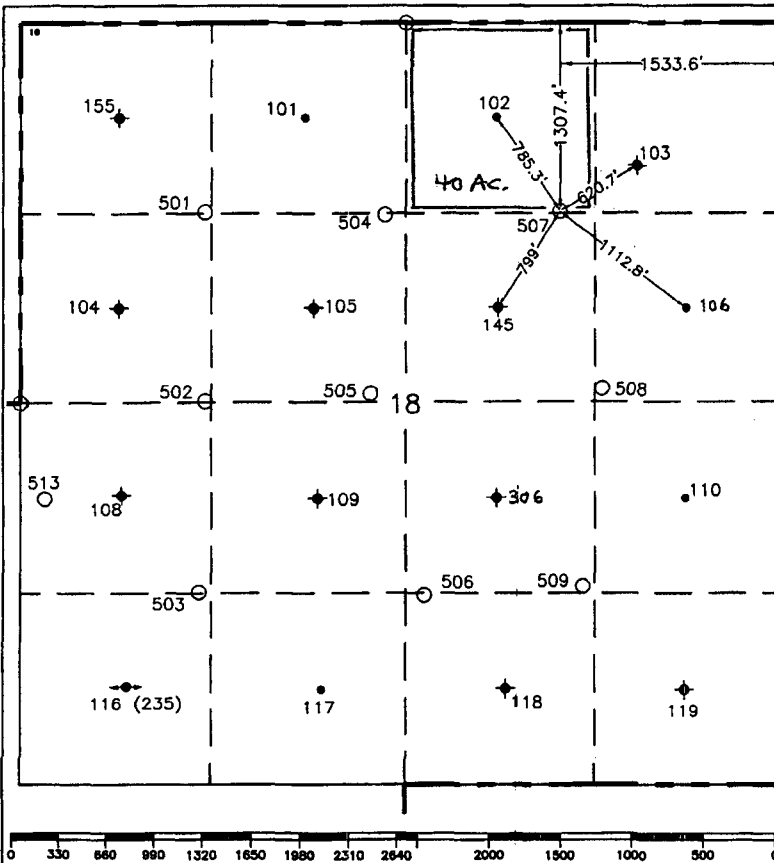
Submit to Appropriate District Office
State Lease-4 copies
Fee Lease-3 copies

☐ AMENDED REPORT

WELL LOCATION AND ACREAGE DEDICATION PLAT

1 API Number		2 Pool Code		3 Pool Name	
				Jalmat; Langlie Mattix	
4 Property Code		5 Property Name			6 Well Number
		Cooper Jal Unit			507
7 OGRID No.		8 Operator Name			9 Elevation
193003		TORCH ENERGY SERVICES, INC.			3291'
10 Surface Location					
UL or lot no.	Section	Township	Range	Lot Idn	Feet from the North/South line
B	18	24-S	37-E		1307.4'
				Feet from the East/West line	1533.6'
				East/West line	Lea
11 Bottom Hole Location If Different From Surface					
UL or lot no.	Section	Township	Range	Lot Idn	Feet from the North/South line
12 Dedicated Acres		13 Joint or Infill		14 Consolidation Code	
40				15 Order No.	

NO ALLOWABLE WILL BE ASSIGNED TO THIS COMPLETION UNTIL ALL INTERESTS HAVE BEEN CONSOLIDATED
OR A NON-STANDARD UNIT HAS BEEN APPROVED BY THE DIVISION.



17 OPERATOR CERTIFICATION
I hereby certify that the information contained herein is true and complete to the best of my knowledge and belief, and that this organization either owns a working interest or unleased mineral interest in the land including the proposed bottom hole location or has a right to drill this well at this location pursuant to a contract with an owner of such a mineral or working interest or to a voluntary pooling agreement or a compulsory pooling order heretofore entered by the division.

Signature: *Jim Kidd* Date: 10/30/06

Printed Name: Jim Kidd

18 SURVEYOR CERTIFICATION

I hereby certify that the well location shown on this plat was plotted from field notes of actual surveys made by me or under my supervision, and that the same is true and correct to the best of my knowledge and belief.

September 19 & 21, 2006

Date of Survey

Signature & Seal of Professional Surveyor:

[Signature]

Certificate No.

7254

○ = Staked Location • = Producing Well ● = Injection Well ◊ = Water Supply Well ♦ = Plugged & Abandon Well
⊙ = Found Section Corner, 2 or 3" Iron Pipe & GLO B.C. ○ = Found 1/4 Section Corner, 1" Iron Pipe & GLO B.C.

ADDITIONAL INFORMATION ON THE LOCATION

State Plane Coordinates			
Northing 446015.04		Easting 892307.00	
Latitude 32°13'15.876"		Longitude 103°11'54.351"	
Zone	North American Datum	Combined Grid Factor	Coordinate File
East	1983/86	0.99988900	Coop_Jal.Crd
Drawing File		Field Book	
Coop_Jal.Dwg		LEA #24, Pg. 7	

DISTRICT I
1625 N. French Dr., Hobbs, NM 88240
DISTRICT II
1301 W. Grand Ave., Artesia, NM 88210
DISTRICT III
1000 Rio Brazos Rd., Aztec, NM 87410
DISTRICT IV
1220 St. Francis Dr., Santa Fe, NM 87505

State of New Mexico
Energy, Minerals and Natural Resources Department

OIL CONSERVATION DIVISION
1220 South St. Francis Drive
Santa Fe, NM 87505

Form C-1021
Revised October 12, 2005

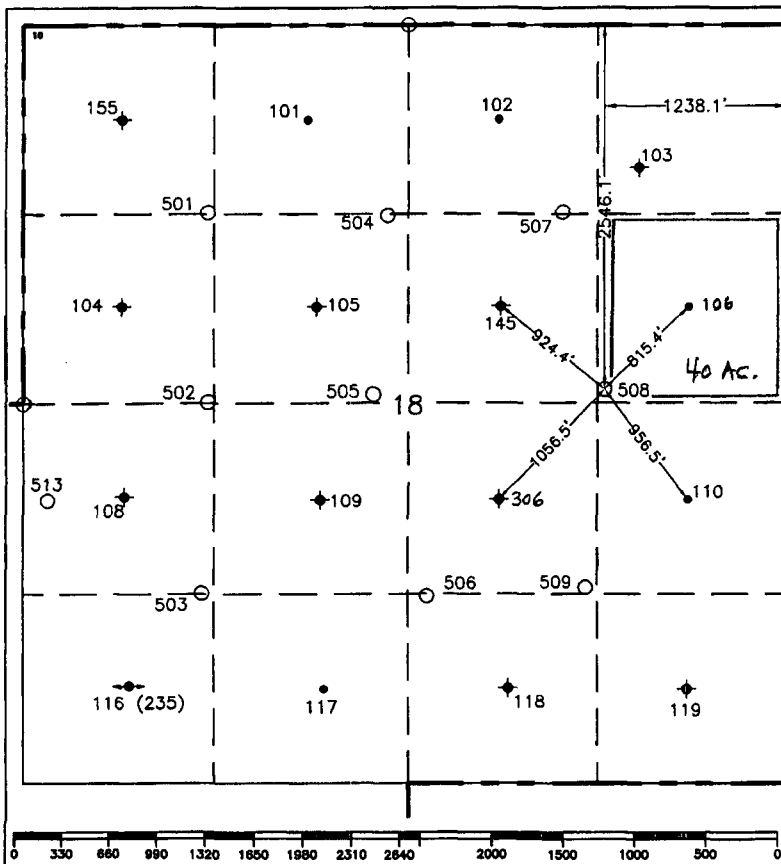
Submit to Appropriate District Office
State Lease-4 copies
Fee Lease-3 copies

☐ AMENDED REPORT

WELL LOCATION AND ACREAGE DEDICATION PLAT

1 API Number		2 Pool Code		3 Pool Name			
				Jalmat; Langlie Mattix			
4 Property Code		5 Property Name			6 Well Number		
		Cooper Jal Unit			508		
7 OGRID No.		8 Operator Name			9 Elevation		
193003		TORCH ENERGY SERVICES, INC.			3297'		
10 Surface Location							
UL or lot no.	Section	Township	Range	Lot Idn	Feet from the North/South line	Feet from the East/West line	County
H	18	24-S	37-E		2546.1'	1238.1'	Lea
11 Bottom Hole Location If Different From Surface							
UL or lot no.	Section	Township	Range	Lot Idn	Feet from the North/South line	Feet from the East/West line	County
12 Dedicated Acres		13 Joint or Infill		14 Consolidation Code		15 Order No.	
40							

NO ALLOWABLE WILL BE ASSIGNED TO THIS COMPLETION UNTIL ALL INTERESTS HAVE BEEN CONSOLIDATED
OR A NON-STANDARD UNIT HAS BEEN APPROVED BY THE DIVISION.



17 OPERATOR CERTIFICATION
I hereby certify that the information contained herein is true and complete to the best of my knowledge and belief, and that this organization either owns a working interest or unleased mineral interest in the land including the proposed bottom hole location or has a right to drill this well at this location pursuant to a contract with an owner of such a mineral or working interest or to a voluntary pooling agreement or a compulsory pooling order heretofore entered by the division.

Signature: *Jim Kidd* Date: 10/30/06
Printed Name: Jim Kidd

18 SURVEYOR CERTIFICATION
I hereby certify that the well location shown on this plat was plotted from field notes of actual surveys made by me or under my supervision, and that the same is true and correct to the best of my knowledge and belief.

September 19 & 21, 2006
Date of Survey

Signature & Seal of Professional Surveyor:

Signature: *[Signature]*
Certificate No. 7254

○ = Staked Location • = Producing Well ● = Injection Well ◊ = Water Supply Well ♦ = Plugged & Abandon Well
⊙ = Found Section Corner, 2 or 3" Iron Pipe & GLO B.C. ○ = Found 1/4 Section Corner, 1" Iron Pipe & GLO B.C.

ADDITIONAL INFORMATION ON THE LOCATION

State Plane Coordinates			
Northing 444780.10		Easting 892617.15	
Latitude 32°13'03.625"		Longitude 103°11'50.893"	
Zone	North American Datum	Combined Grid Factor	Coordinate File
East	1983/86	0.99988900	Coop_Jal.Crd
Drawing File		Field Book	
Coop_Jal.Dwg		LEA #24, Pg. 8	

DISTRICT I
1625 N. French Dr., Hobbs, NM 88240

DISTRICT II
1301 W. Grand Ave., Artesia, NM 88210

DISTRICT III
1000 Rio Brazos Rd., Aztec, NM 87410

DISTRICT IV
1220 St. Francis Dr., Santa Fe, NM 87505

State of New Mexico
Energy, Minerals and Natural Resources Department

OIL CONSERVATION DIVISION
1220 South St. Francis Drive
Santa Fe, NM 87505

Form C-102
Revised October 12, 2005

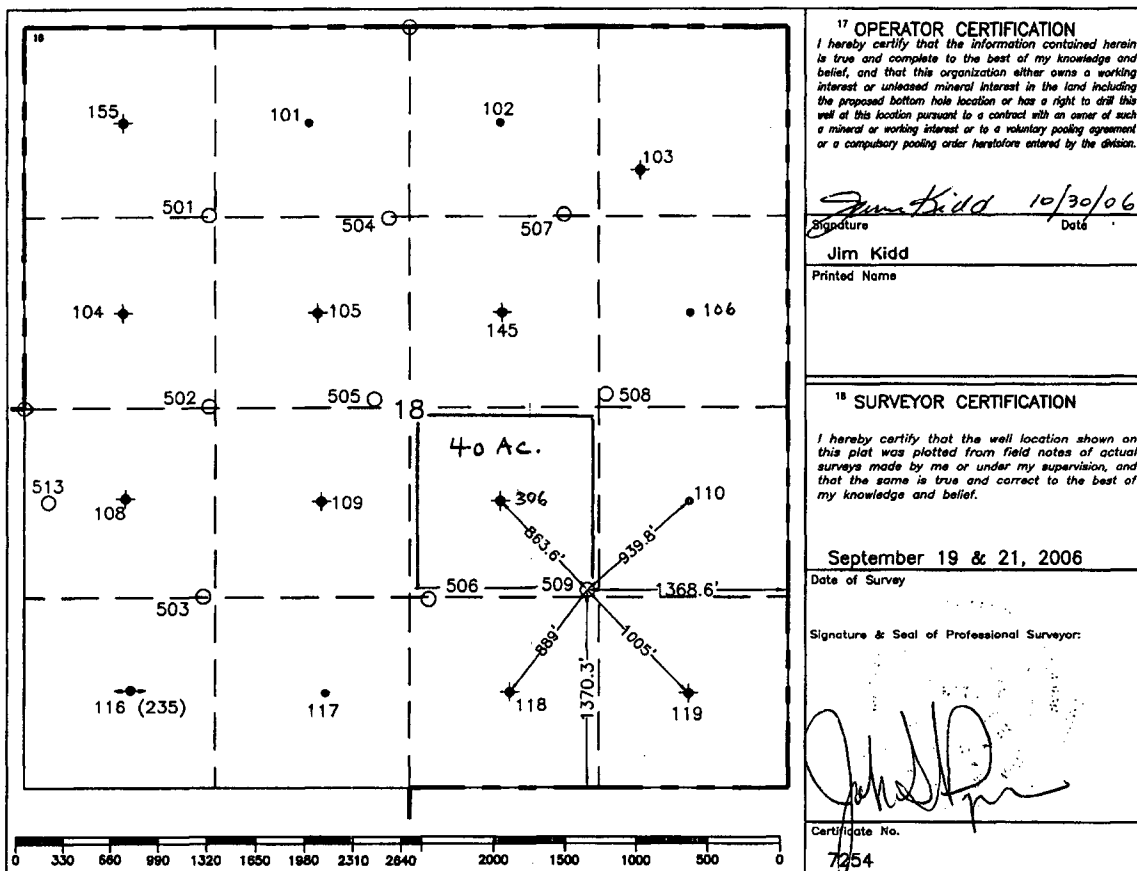
Submit to Appropriate District Office
State Lease-4 copies
Fee Lease-3 copies

☐ AMENDED REPORT

WELL LOCATION AND ACREAGE DEDICATION PLAT

1 API Number		2 Pool Code		3 Pool Name					
				Jalmat; Langlie Mattix					
4 Property Code		5 Property Name			6 Well Number				
		Cooper Jal Unit			509				
7 GRID No.		8 Operator Name			9 Elevation				
193003		TORCH ENERGY SERVICES, INC.			3299'				
10 Surface Location									
UL or lot no.	Section	Township	Range	Lot Idn	Feet from the	North/South line	Feet from the	East/West line	County
J	18	24-S	37-E		1370.3'	South	1368.6'	East	Lea
11 Bottom Hole Location If Different From Surface									
UL or lot no.	Section	Township	Range	Lot Idn	Feet from the	North/South line	Feet from the	East/West line	County
12 Dedicated Acres		13 Joint or Infill		14 Consolidation Code		15 Order No.			
40									

NO ALLOWABLE WILL BE ASSIGNED TO THIS COMPLETION UNTIL ALL INTERESTS HAVE BEEN CONSOLIDATED
OR A NON-STANDARD UNIT HAS BEEN APPROVED BY THE DIVISION.



○ = Staked Location • = Producing Well ◆ = Injection Well ◇ = Water Supply Well ♦ = Plugged & Abandon Well
⊙ = Found Section Corner, 2 or 3" Iron Pipe & GLO B.C. ○ = Found 1/4 Section Corner, 1" Iron Pipe & GLO B.C.

ADDITIONAL INFORMATION ON THE LOCATION

State Plane Coordinates			
Northing 443412.72		Easting 892502.95	
Latitude 32°12'50.108"		Longitude 103°11'52.390"	
Zone	North American Datum	Combined Grid Factor	Coordinate File
East	1983/86	0.99988900	Coop_Jal.Crd
Drawing File		Field Book	
Coop_Jal.Dwg		LEA #24, Pg. 9	



TORCH
Energy Services, Inc.

2600 W I-20 Odessa, TX 79763
Phone: 432-580-8500 Fax: 432-580-8501

January 18, 2007

CJU – STATE AND LOCAL GOVERNMENTS

Request for Unorthodox Locations

Cooper Jal Unit (Property Code 302966)

Well Nos. 501, 502, 503, 504, 505, 506, 507, 508 & 509

Wells are in Section 18, T-24-S, R-37-E, NMPM

Jalmat and Langlie-Mattix Pools

Lea County, New Mexico

State of New Mexico

Energy and Minerals Department

Oil Conservation Division

1220 South St. Francis Dr.

Santa Fe, New Mexico 87505

Attention: Mr. David K. Brooks, Assistant General Counsel

Sir:

We submit this letter request in order to correct and clarify our letter of January 8, 2007. This previous letter requested the approval of the Unorthodox well locations for our Cooper Jal Unit wells 501 through 509.

The waterflood in the Cooper Jal Unit was authorized for the Jalmat Pool by Order R-4020 and for the Langlie-Mattix Pool by Order R-4019. Some of the Unorthodox locations for wells drilled by the previous operator in the 1990s were authorized by NSL-3404, NSL-3480 and NSL-3488. 37240 33820

By reference to a telephone conversation on January 18, 2007 between yourself and, Randy Ziebarth and Jim Kidd of Torch, we understand that we may place multiple oil wells within the same spacing unit in both the Jalmat and Langlie-Mattix Pools.

On this basis and referring to the attached Exhibit 1, we propose to dedicate the 501 through 509 wells as follows:

- New well 501 to the NW $\frac{1}{4}$ of the NW $\frac{1}{4}$ of Section 18

- New well 502 to the SW $\frac{1}{4}$ of the NW $\frac{1}{4}$ of Section 18
- New well 503 to the NW $\frac{1}{4}$ of the SW $\frac{1}{4}$ of Section 18
- New wells 504 and 505 to the SE $\frac{1}{4}$ of the NW $\frac{1}{4}$ of Section 18
- New well 506 to the SW $\frac{1}{4}$ of the SE $\frac{1}{4}$ of Section 18
- New well 507 and existing well 102 to the NW $\frac{1}{4}$ of the NE $\frac{1}{4}$ of Section 18
- New well 508 and existing well 106 to the SE $\frac{1}{4}$ of the NE $\frac{1}{4}$ of Section 18
- New well 509 to the NW $\frac{1}{4}$ of the SE $\frac{1}{4}$ of Section 18

Well 503 will be on Federal minerals and wells 501, 502, 504, 505, 506, 507, 508 and 509 are on private land.

These locations have been chosen to allow us to recover the oil reserves in Section 18 of this active secondary recovery waterflood. Without these wells the reserves in this section will not be recovered.

We understand that if we will not be able to produce from any gas wells within gas units in this section simultaneously with these oil wells. We are prepared to shut-in these gas wells, if required. We believe these wells (101, 106 and 110) are oil wells and they will be re-tested.

We will not produce from the 501 through 509 wells until we receive the NSL approvals for these wells.

There are no "affected" offset operators to these wells. The production from all areas of the Cooper Jal Unit is shared on a uniform basis as provided for in the Unit Operating Agreement, section 18 is wholly within the Cooper Jal Unit and Torch is the Cooper Jal Unit operator.

Applications to downhole commingle the Jalmat Pool and the Langlie-Mattix Pool in each of these 500 series producers will be filed later.

Also attached are Survey Plats C-102 for each 500 series well and a lease plat showing the existing CJU wells.

Yours very truly,

Jim Kidd
Production Engineer

Cc: NMOCD, 1625 N. French Dr., Hobbs, NM 88240



NEW MEXICO ENERGY, MINERALS and NATURAL RESOURCES DEPARTMENT

BILL RICHARDSON

Governor

Joanna Prukop

Cabinet Secretary

Mark E. Fesmire, P.E.

Director

Oil Conservation Division

January 16, 2007

Mr. Jim Kidd
Production Engineer
Torch Energy Services, Inc.
FAX No. 432-580-8501

**Re: NSL Applications
Cooper Jal Unit Wells Nos 501-509
Lea County**

Dear Mr. Kidd:

I have before me your letter of January 8, together with attachments, which we have treated as requesting administrative approval for non-standard locations for all of the referenced wells.

There are numerous problems with this application:

First, the application states that non-standard location approvals are requested for Wells nos 505, 507 and 508. Actually, the locations of all of the wells are non-standard in both the Jalmat and Langlie-Mattix Pools. Rule 3.A(1) of the Special Pool Rules for the Jalmat Gas Pool requires that oil wells assigned to 40-acre units be located at least 330 feet from any quarter/quarter sections line. Statewide Rule 104.B(1), applicable to the Langlie-Mattix Pool, imposes the same requirement.

Second, your request appears to contemplate assignment of 40-acre units including parts of two different quarter/quarter sections to each of Wells nos 505, 507 and 508. This is prohibited in the Jalmat Pool by Rule 2.B of the Special Pool Rules for the Jalmat Gas Pool, and in the Langlie-Mattix Pool by Statewide Rule 104.B(1). Furthermore, there is no authorization for the Division to issue administrative exceptions that would allow non-standard units to be configured as these are shown to be, unless these are survey anomalies, in which case you would need to furnish us with copies of official plats showing that the governmental surveys have configured lots in this manner.

Third, Rule 2.C of the Special Pool Rules for the Jalmat Gas Pool prohibits simultaneous dedication of the same acreage to both oil and gas wells in the Jalmat. This rule also is not subject to administrative exceptions. If the NE, NW and SE quarters of Section 18 are dedicated as 160-acre gas units, then this fact would preclude granting your application as to any of your proposed wells except the no. 503 in the SW quarter. The proposed locations for the 501, 502, 504, 506 and 509 could be approved if you requested, and the Division approved, 40-acre gas units for the identified gas wells. This could be done by administrative exception. The proposed locations for the 505, 507 and 508 could be approved only after a hearing.

Finally, the statement that 'There are no "affected" offset operators' is not sufficiently specific. If this entire section is included in the Cooper Jal Unit, Torch is the operator of that unit, and the Unit Agreement provides for sharing of production from all parts of the unit on a uniform basis, then no notice would be required for administrative NSL or NSP applications. However, we would need the application to state those facts specifically.

Because of the numerous difficulties with this application, OCD will not proceed further with it until you submit a modified proposal that conforms to applicable rules governing what can be done by administrative exception, as outlined above.

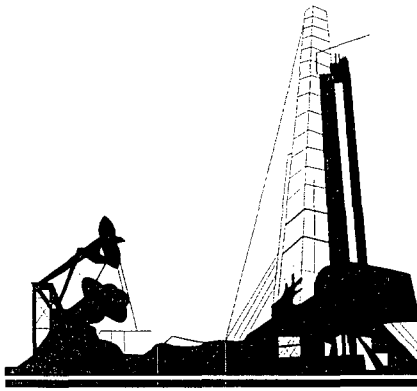
If you want to proceed with your plan as described in your letter and attachments, I recommend that you file an application for a hearing.

Should you have questions, please feel free to call the undersigned at (505)-476-3450.

Very truly yours,

A handwritten signature in black ink, appearing to read "David K. Brooks". The signature is fluid and cursive, with a long horizontal stroke at the end.

David K. Brooks,
Assistant General Counsel



TRANSMITTAL COVER SHEET

OIL CONSERVATION DIVISION
1220 S. ST. FRANCIS DRIVE
SANTA FE, NM 87505
(505) 476-3440
(505)476-3462 (Fax)

PLEASE DELIVER THIS FAX:

TO: Jim Kidd 432-580-8501

FROM: David Brooks

DATE: 1-16-2007

PAGES: 3

SUBJECT: Cooper Jal Unit Wells 501-509

IF YOU HAVE TROUBLE RECEIVING THIS FAX, PLEASE CALL THE OFFICE
NUMBER ABOVE.

January 8, 2007

CJU – STATE AND LOCAL GOVERNMENTS

Request for 40 Acre Spacing Units and
Request for Unorthodox Locations
Cooper Jal Unit (Property Code 302966)
Well Nos. 501, 502, 503, 504, 505, 506, 507, 508 & 509
Wells are in Section 18, T-24-S, R-37-E, NMPM
Jalmat and Langlie-Mattix Pools
Lea County, New Mexico

State of New Mexico
Energy and Minerals Department
Oil Conservation Division
1220 South St. Francis Dr.
Santa Fe, New Mexico 87505

Attention: The Engineering Committee

Gentlemen:

An application to assign approximately 40 Acre spacing units to the Cooper Jal Unit (CJU) wells 501, 502, 503, 504, 505, 506, 507, 508 and 509, by administrative approval, is requested, as per Rule 19.15.3.104(C)(3). It is also requested that if wells 505, 507 and 508 are in unorthodox locations, that an administrative exception to Rule 19.15.3.104(F)(1) be granted to wells 505, 507 and 508. See the attached Exhibit #1 which is a well map of the affected section 18.

These exceptions to Rule 19.15.3.104(C)(3) and Rule 19.15.3.104(F)(1) are requested for the efficient injection and production operations of these wells within the CJU, an active secondary recovery project (waterflood).

Wells 501 502, 504, 505, 506, 507, 508 and 509 are on private land and 503 is on Federal minerals. Exhibit #1 shows the 40-acre "oil" spacing units requested and the existing 160-acre "gas" spacing units for wells 101, 106 and 110.

The drilling applications to the OCD for wells 505, 507 and 508 have been filed and are currently under review. We have been told that CJU "gas" wells 101, 106 and 110 present a problem to the 505, 507 and 508 drilling applications.

The surface locations for wells 505, 507 and 508 were moved slightly from the on-pattern ideal locations to new locations due to the following surface obstructions:

- CJU 505 was moved 70 ft. to the north because of two existing pipelines with ROWs.
- CJU 507 was moved 214 ft. to the west because of the existing railroad tracks with a ROW.
- CJU 508 was moved 82 ft. to the east because of an existing pipeline with a ROW.

The CJU 101, 106 and 110 wells are "gas" wells due to their low oil production (November 2006 well tests are: #101 – 1 bopd, 2 bwpd, 17 mcf/d gas; #106 – 0 bopd, 1 bwpd, 21 mcf/d gas; #110 – 0 bopd, 4 bwpd, 6 mcf/d gas). These 3,800' deep wells have been assigned 160-acre spacing units because of their "gas" well status. These "gas" wells are completed in a traditionally "oily" section of the Jalmat Pool and are probably lacking oil production because of an inadequate water drive from the waterflood and damaged/scaled-off oil completions. In the 1990s, the previous operator P&A'd wells that would have been used for water injection service in this section 18. There are currently no active water injectors in section 18. It is expected that all wells drilled and recompleted in section 18 in the CJU as producers, will produce enough oil to be classified as "oil" wells in the future.

The CJU 500 series wells must be drilled to these locations to ensure proper development on a 20-acre/well and a 40-acre/pattern spacing in order to recover the reserves in this established waterflood. These reserves will not be recovered with the current patterns and well spacing in this section 18.

Torch's plans are to drill the 501 through 509 wells and to convert the existing section 18 producers to water injection service. Torch also intends to re-enter the P&A'd wells in section 18 and to place them into water injection service.

Each of these 500 series wells will be completed as oil wells in this waterflood, which encompasses the Jalmat Pool and the Langlie-Mattix Pool. It is expected that the Langlie-Mattix Pool (deeper Pool) will be waterflooded as well as the lower and middle parts of the Jalmat Pool. The gas cap, which may be present in the upper Jalmat Pool, will be avoided.

Applications to downhole commingle the Jalmat Pool and the Langlie-Mattix Pool in each of these 500 series producers will be filed later.

There are no "affected" offset operators to these wells.

Also attached are Survey Plats C-102 for each 500 series well and a lease plat showing the existing CJU wells.

Yours very truly,



Jim Kidd

Production Engineer

Cc: NMOCD, 1625 N. French Dr., Hobbs, NM 88240

☐ Well Name & Number: COOPER JAL UNIT No. 119
Operator: TEXACO EXPLORATION & PRODUCTION INC.

☐ 3002511145 C-18-24S-37E 660 FNL & 1980 FWL

Well Name & Number: COOPER JAL UNIT No. 101

Operator: TORCH ENERGY SERVICES, INC.

☐ 3002511146 D-18-24S-37E 660 FNL & 660 FWL

Well Name & Number: COOPER JAL UNIT No. 155

Operator: TEXACO EXPLORATION & PRODUCTION INC

☐ 3002511147 F-18-24S-37E 1980 FNL & 1980 FWL

Well Name & Number: COOPER JAL UNIT No. 105

Operator: CHEVRON U S A INC

☐ 3002538180 D-18-24S-37E 1310 FNL & 1248 FWL

Well Name & Number: COOPER JAL UNIT No. 501

Operator: TORCH ENERGY SERVICES, INC.

☐ 3002538188 E-18-24S-37E 2630 FNL & 1249 FWL

Well Name & Number: COOPER JAL UNIT No. 502

Operator: TORCH ENERGY SERVICES, INC.

☐ 3002538189 F-18-24S-37E 1330 FNL & 2468 FWL

Well Name & Number: COOPER JAL UNIT No. 504

Operator: TORCH ENERGY SERVICES, INC.

☐ 3002538201 O-18-24S-37E 1310 FSL & 2477 FEL

Well Name & Number: COOPER JAL UNIT No. 506

Operator: TORCH ENERGY SERVICES, INC.

☐ 3002538202 J-18-24S-37E 1370 FSL & 1368 FEL

Well Name & Number: COOPER JAL UNIT No. 509

Operator: TORCH ENERGY SERVICES, INC.

☐ 3002538263 F-18-24S-37E 2581 FNL & 2369 FWL

Well Name & Number: COOPER JAL UNIT No. 505

Operator: TORCH ENERGY SERVICES, INC.

☐ 3002538269 B-18-24S-37E 1307 FNL & 1534 FEL

Well Name & Number: COOPER JAL UNIT No. 507

Operator: TORCH ENERGY SERVICES, INC.

☐ 3002538270 H-18-24S-37E 2546 FNL & 1238 FEL

Well Name & Number: COOPER JAL UNIT No. 508

Operator: TORCH ENERGY SERVICES, INC.

24 Records found

Displaying Screen 1 of 1

Continue

Go Back

Well File Search - Select API Number to View

Please select the API Number you wish to view from the list below by clicking the radio button next to the API Number. Then click the "Continue" button to see the thumbnails for the API you selected. The search results are broken out by groups of 25 on each page. Switching pages can be done by clicking the "Next 25" or "Previous 25" links.

24 Records found

Displaying Screen 1 of 1

<input type="radio"/>	API Number	ULSTR	Footages
<input type="radio"/>	3002511052	J-18-24S-37E	1980 FSL & 1980 FEL
	Well Name & Number: COOPER JAL UNIT No. 244		
	Operator: TEXACO EXPLORATION & PRODUCTION INC		
<input type="radio"/>	3002511133	K-18-24S-37E	1980 FSL & 1980 FWL
	Well Name & Number: COOPER JAL UNIT No. 109		
	Operator: TEXACO EXPLORATION & PRODUCTION INC		
<input type="radio"/>	3002511134	B-18-24S-37E	660 FNL & 1980 FEL
	Well Name & Number: COOPER JAL UNIT No. 102		
	Operator: TORCH ENERGY SERVICES, INC.		
<input type="radio"/>	3002511135	A-18-24S-37E	990 FNL & 990 FEL
	Well Name & Number: COOPER JAL UNIT No. 103		
	Operator: TEXACO EXPLORATION & PRODUCTION INC		
<input type="radio"/>	3002511136	G-18-24S-37E	1980 FNL & 1980 FEL
	Well Name & Number: COOPER JAL UNIT No. 145		
	Operator: TEXACO EXPLORATION & PRODUCTION INC		
<input type="radio"/>	3002511137	H-18-24S-37E	1980 FNL & 660 FEL
	Well Name & Number: COOPER JAL UNIT No. 106		
	Operator: TORCH ENERGY SERVICES, INC.		
<input type="radio"/>	3002511138	E-18-24S-37E	1980 FNL & 660 FWL
	Well Name & Number: COOPER JAL UNIT No. 104		
	Operator: TEXACO EXPLORATION & PRODUCTION INC		
<input type="radio"/>	3002511139	O-18-24S-37E	660 FSL & 1980 FEL
	Well Name & Number: COOPER JAL UNIT No. 118		
	Operator: TEXACO EXPLORATION & PRODUCTION INC		
<input type="radio"/>	3002511140	N-18-24S-37E	660 FSL & 1980 FWL
	Well Name & Number: COOPER JAL UNIT No. 117		
	Operator: TORCH ENERGY SERVICES, INC.		
<input type="radio"/>	3002511141	M-18-24S-37E	660 FSL & 660 FWL
	Well Name & Number: COOPER JAL UNIT No. 116		
	Operator: TORCH ENERGY SERVICES, INC.		
<input type="radio"/>	3002511142	L-18-24S-37E	1980 FSL & 660 FWL
	Well Name & Number: COOPER JAL UNIT No. 108		
	Operator: TEXACO EXPLORATION & PRODUCTION INC		
<input type="radio"/>	3002511143	I-18-24S-37E	1980 FSL & 660 FEL
	Well Name & Number: COOPER JAL UNIT No. 110		
	Operator: TORCH ENERGY SERVICES, INC.		
	3002511144	P-18-24S-37E	660 FSL & 660 FEL

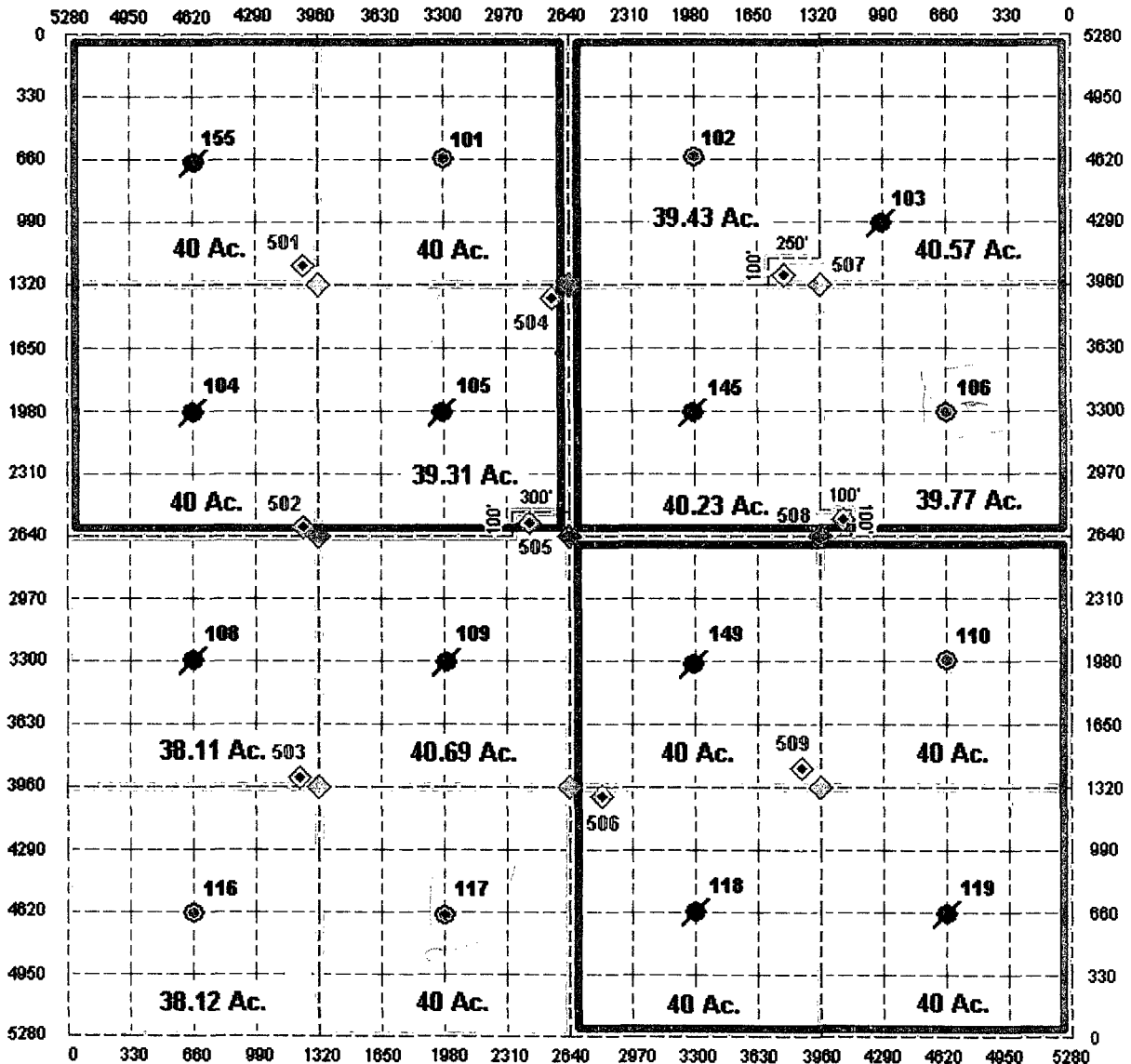
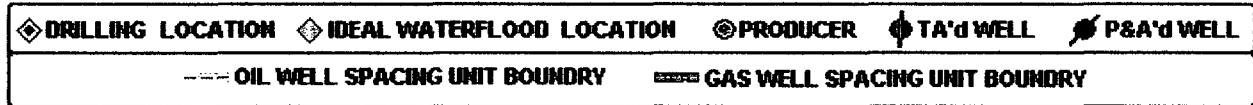
EXHIBIT #1

COOPER JAL UNIT

SECTION 18, T-24-S, R-37-E, NMPM

LEA COUNTY, NM

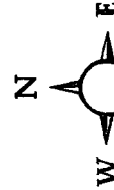
2006 - 2007 DRILLING LOCATIONS



TORCH ENERGY SERVICES, INC.

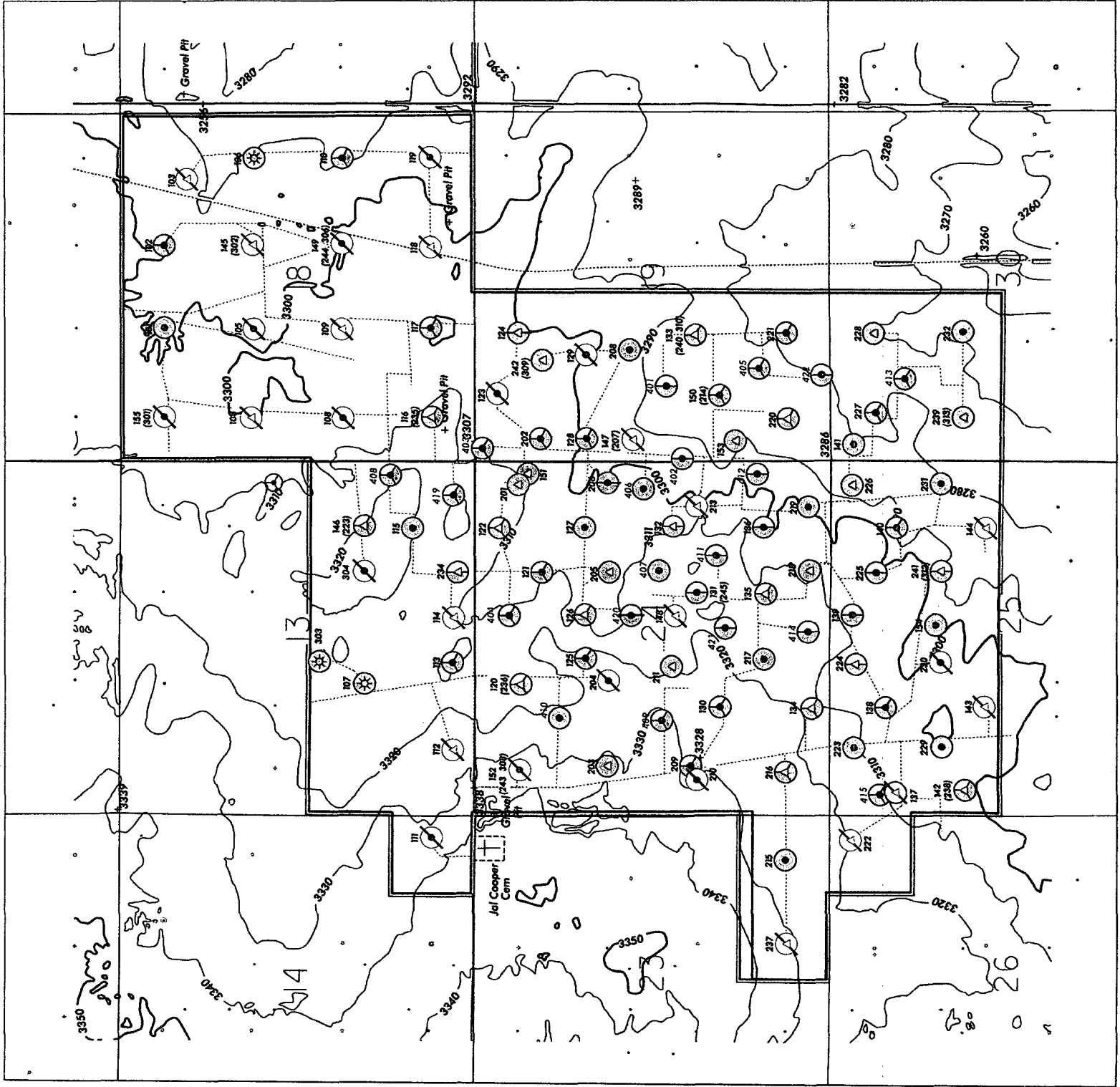
LEGEND

- ⊙ Producer
- ⊙ Injector
- ⊙ T&A Well
- ⊙ T&A Well
- ⊙ P&A Well
- ⊙ P&A Well
- ⊙ Gas Well
- ⊙ Cross sections
- ⊙ Yales Production
- ⊙ Seven Rivers Prod.
- ⊙ Queen Production
- Railroad
- Road



MERCATOR PROJECTION
 UTM Zone 18N
 Longitude of the central meridian: -104
 Latitude of true scale: 32

COOPER JAL UNIT
 LEA COUNTY, NEW MEXICO
 ROADS AND TOPO MAP
 SCALE: 1" = 1 MILE
 October 1951



DISTRICT 1
1625 N. French Dr., Hobbs, NM 88240

DISTRICT II
1301 W. Grand Ave., Artesia, NM 88210

DISTRICT III
1000 Río Brazos Rd., Aztec, NM 87410

DISTRICT IV
1220 St. Francis Dr., Santa Fe, NM 87505

State of New Mexico
Energy, Minerals and Natural Resources Department

OIL CONSERVATION DIVISION

1220 South St. Francis Drive
Santa Fe, NM 87505

Form C-102
Revised October 12, 2005

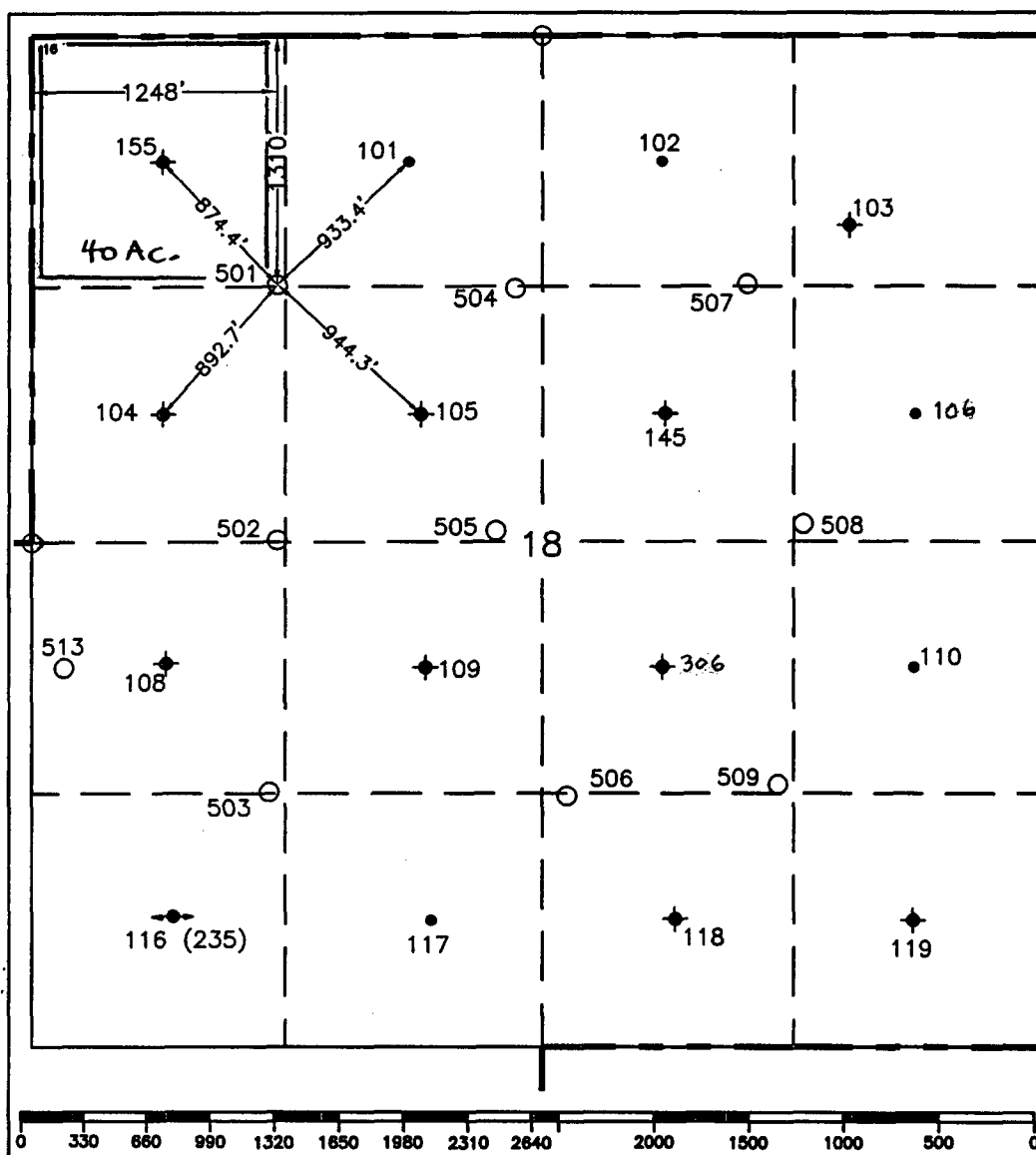
Submit to Appropriate District Office
State Lease—4 copies
Fee Lease—3 copies

☐ AMENDED REPORT

WELL LOCATION AND ACREAGE DEDICATION PLAT

¹ API Number		² Pool Code		³ Pool Name Jalmat; Langlie Mattix					
⁴ Property Code		⁵ Property Name Cooper Jal Unit						⁶ Well Number 501	
⁷ OGRID No. 193003		⁸ Operator Name TORCH ENERGY SERVICES, INC.						⁹ Elevation 3300'	
¹⁰ Surface Location									
UL or lot no. D	Section 18	Township 24-S	Range 37-E	Lot Idn	Feet from the 1310'	North/South line North	Feet from the 1248'	East/West line West	⁷ County Lea
¹¹ Bottom Hole Location If Different From Surface									
UL or lot no.	Section	Township	Range	Lot Idn	Feet from the	North/South line	Feet from the	East/West line	⁷ County
¹² Dedicated Acres 40	¹³ Joint or Infill		¹⁴ Consolidation Code		¹⁵ Order No.				

NO ALLOWABLE WILL BE ASSIGNED TO THIS COMPLETION UNTIL ALL INTERESTS HAVE BEEN CONSOLIDATED
OR A NON-STANDARD UNIT HAS BEEN APPROVED BY THE DIVISION.



17 OPERATOR CERTIFICATION

I hereby certify that the information contained herein is true and complete to the best of my knowledge and belief, and that this organization either owns a working interest or unleased mineral interest in the land including the proposed bottom hole location or has a right to drill this well at this location pursuant to a contract with an owner of such a mineral or working interest or to a voluntary pooling agreement or a compulsory pooling order heretofore entered by the division.

Signature James Kidd Date 10/30/06

Jim Kidd
Printed Name

Printed Name _____

¹⁸ SURVEYOR CERTIFICATION

I hereby certify that the well location shown on this plat was plotted from field notes of actual surveys made by me or under my supervision, and that the same is true and correct to the best of my knowledge and belief.




September 19 & 21, 2006

Date of Survey _____

Signature & Seal of Professional Surveyor:

Certificate No.

7254

○ = Staked Location • = Producing Well  = Injection Well  = Water Supply Well  = Plugged & Abandon Well
 © = Found Section Corner, 2 or 3" Iron Pipe & GLO B.C. ○ = Found 1/4 Section Corner, 1" Iron Pipe & GLO B.C.

ADDITIONAL INFORMATION ON THE LOCATION

State Plane Coordinates			
Northing	445982.02	Easting	889871.59
Latitude 32°13'15.803"		Longitude 103°12'22.701"	
Zone	North American Datum	Combined Grid Factor	Coordinate File
East	1983/86	0.99988900	Coop_Jal.Crd
Drawing File Coop_Jal.Dwg		Field Book LEA #24, Pg. 1	

DISTRICT 1
1625 N. French Dr., Hobbs, NM 88240

DISTRICT II
1301 W. Grand Ave., Artesia, NM 88210

DISTRICT III
1000 Rio Brazos Rd., Aztec, NM 87410

DISTRICT IV
1220 St. Francis Dr., Santa Fe, NM 87505

State of New Mexico
Energy, Minerals and Natural Resources Department

Form C-102
Revised October 12, 2005

Submit to Appropriate District Office
State Lease-4 copies
Fee Lease-3 copies

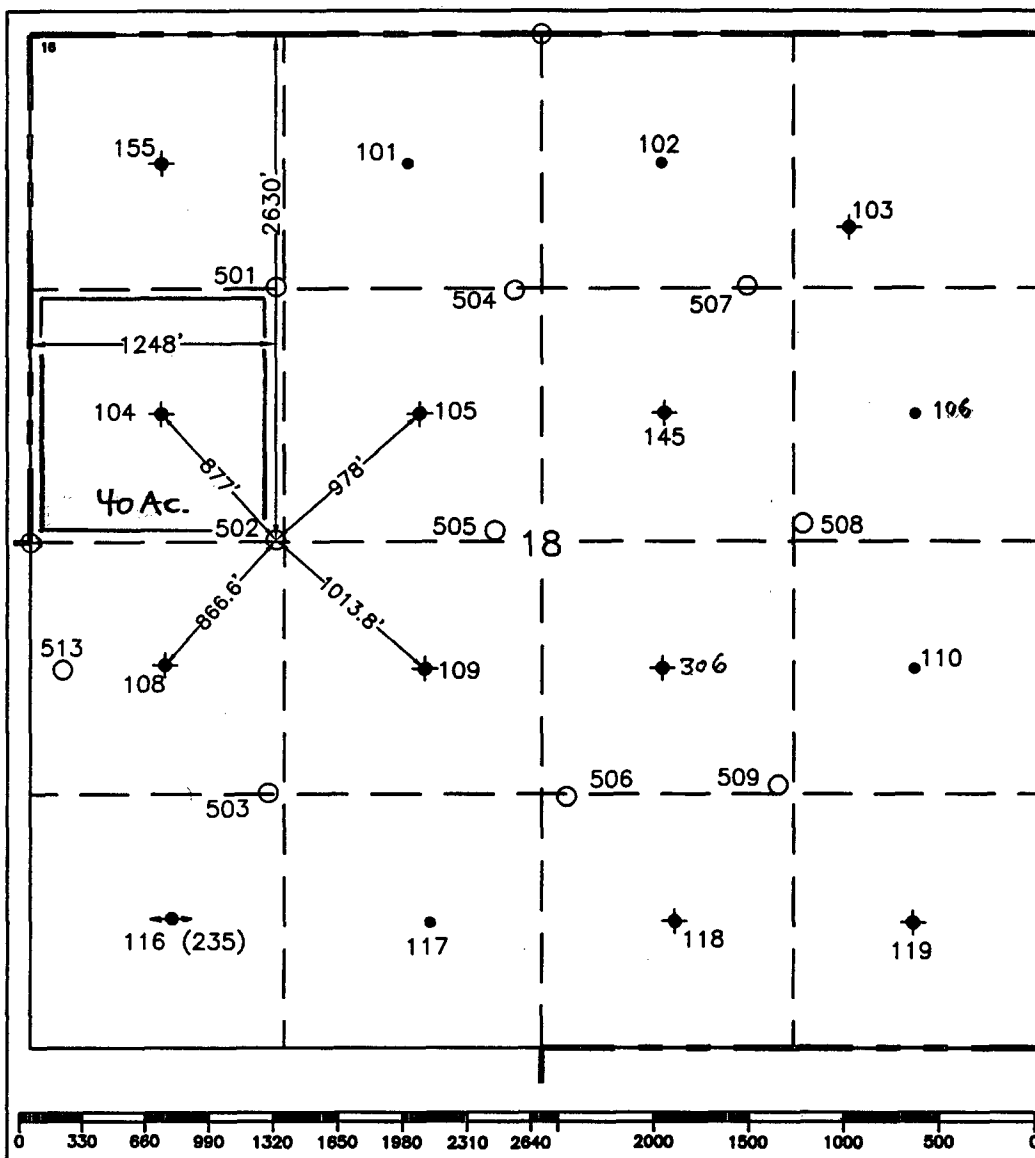
OIL CONSERVATION DIVISION
1220 South St. Francis Drive
Santa Fe, NM 87505

☐ AMENDED REPORT

WELL LOCATION AND ACREAGE DEDICATION PLAT

1 API Number		2 Pool Code		3 Pool Name Jalmat; Langlie Mattix					
4 Property Code		5 Property Name Cooper Jal Unit						6 Well Number 502	
7 OGRID No. 193003		8 Operator Name TORCH ENERGY SERVICES, INC.						9 Elevation 3300'	
10 Surface Location									
UL or lot no. E	Section 18	Township 24-S	Range 37-E	Lot Idn	Feet from the 2630'	North/South line North	Feet from the 1248.9'	East/West line West	7 County Lea
11 Bottom Hole Location If Different From Surface									
UL or lot no.	Section	Township	Range	Lot Idn	Feet from the	North/South line	Feet from the	East/West line	7 County
12 Dedicated Acres 40		13 Joint or Infill		14 Consolidation Code		15 Order No.			

NO ALLOWABLE WILL BE ASSIGNED TO THIS COMPLETION UNTIL ALL INTERESTS HAVE BEEN CONSOLIDATED
OR A NON-STANDARD UNIT HAS BEEN APPROVED BY THE DIVISION.



DISTRICT 1
1625 N. French Dr., Hobbs, NM 88240

DISTRICT II
1301 W. Grand Ave., Artesia, NM 88210

DISTRICT III
1000 Rio Brazos Rd., Aztec, NM 87410

DISTRICT IV
1220 St. Francis Dr., Santa Fe, NM 87505

State of New Mexico
Energy, Minerals and Natural Resources Department

OIL CONSERVATION DIVISION
1220 South St. Francis Drive
Santa Fe, NM 87505

Form C-102
Revised October 12, 2005

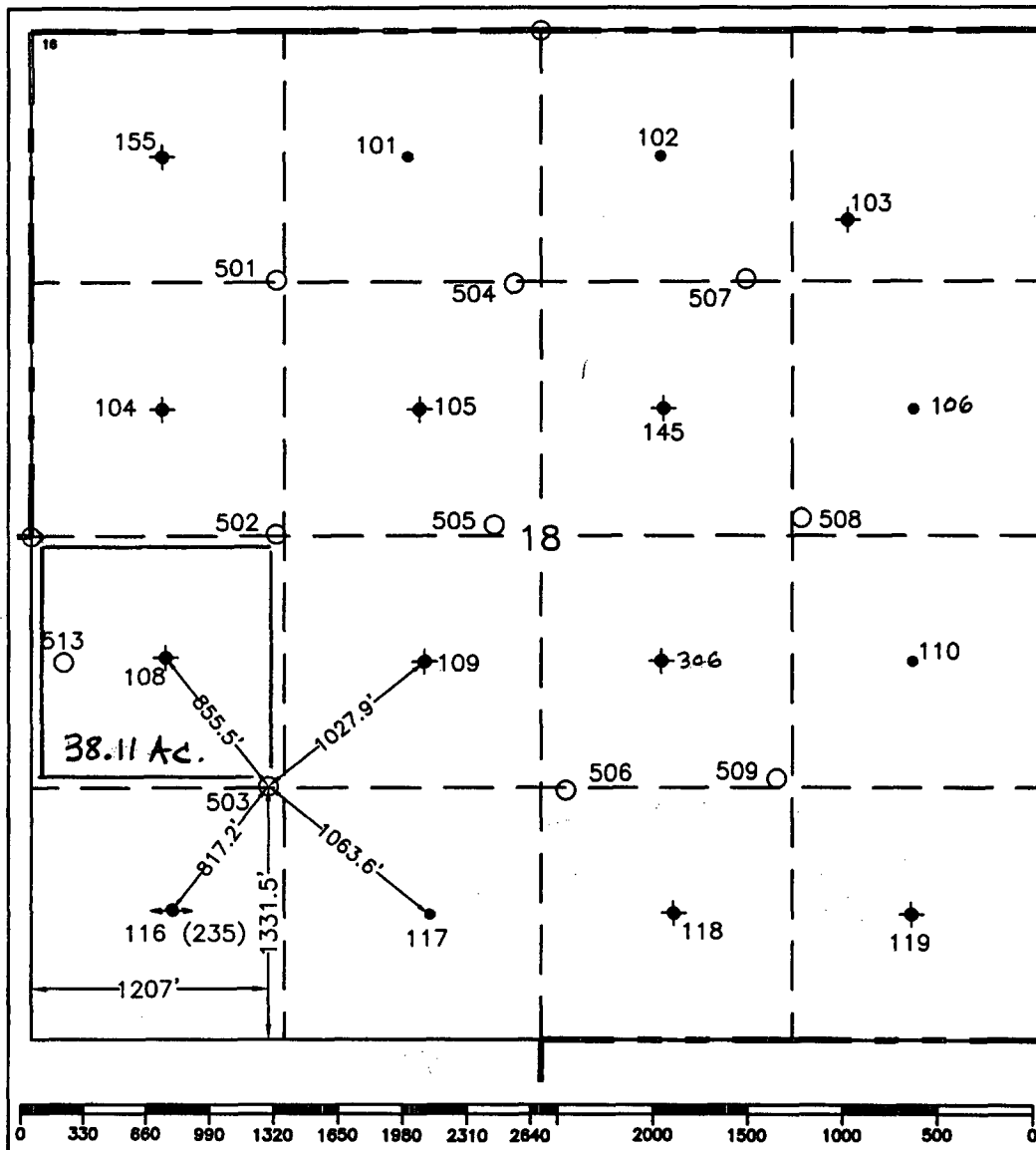
Submit to Appropriate District Office
State Lease-4 copies
Fee Lease-3 copies

☐ AMENDED REPORT

WELL LOCATION AND ACREAGE DEDICATION PLAT

1 API Number		2 Pool Code		3 Pool Name Jalmat; Langlie Mattix					
4 Property Code		5 Property Name Cooper Jal Unit						6 Well Number 503	
7 OGRID No. 193003		8 Operator Name TORCH ENERGY SERVICES, INC.						9 Elevation 3305'	
10 Surface Location									
UL or lot no. L	Section 18	Township 24-S	Range 37-E	Lot Idn	Feet from the 1331.5'	North/South line South	Feet from the 1207'	East/West line West	County Lea
11 Bottom Hole Location If Different From Surface									
UL or lot no.	Section	Township	Range	Lot Idn	Feet from the	North/South line	Feet from the	East/West line	County
12 Dedicated Acres 40		13 Joint or Infill		14 Consolidation Code		15 Order No.			

NO ALLOWABLE WILL BE ASSIGNED TO THIS COMPLETION UNTIL ALL INTERESTS HAVE BEEN CONSOLIDATED
OR A NON-STANDARD UNIT HAS BEEN APPROVED BY THE DIVISION.



17 OPERATOR CERTIFICATION
I hereby certify that the information contained herein is true and complete to the best of my knowledge and belief, and that this organization either owns a working interest or unleased mineral interest in the land including the proposed bottom hole location or has a right to drill this well at this location pursuant to a contract with an owner of such a mineral or working interest or to a voluntary pooling agreement or a compulsory pooling order heretofore entered by the division.

Signature: *Jim Kidd* Date: 10/30/06
Printed Name: Jim Kidd

18 SURVEYOR CERTIFICATION
I hereby certify that the well location shown on this plat was plotted from field notes of actual surveys made by me or under my supervision, and that the same is true and correct to the best of my knowledge and belief.

September 19 & 21, 2006
Date of Survey

Signature & Seal of Professional Surveyor:
[Signature]
Certificate No. 7254

○ = Staked Location • = Producing Well ◆ = Injection Well ◇ = Water Supply Well ♦ = Plugged & Abandon Well
⊙ = Found Section Corner, 2 or 3" Iron Pipe & GLO B.C. ◦ = Found 1/4 Section Corner, 1" Iron Pipe & GLO B.C.

ADDITIONAL INFORMATION ON THE LOCATION

State Plane Coordinates		Easting 889865.03	
Northing 443340.21		Longitude 103°12'23.099"	
Latitude 32°12'49.665"		Combined Grid Factor 0.99988900	
Zone North American Datum 1983/86		Coordinate File Coop_Jal.Crd	
Drawing File Coop_Jal.Dwg		Field Book LEA #24, Pg. 3	

DISTRICT I
1625 N. French Dr., Hobbs, NM 88240
DISTRICT II
1301 W. Grand Ave., Artesia, NM 88210
DISTRICT III
1000 Rio Brazos Rd., Aztec, NM 87410
DISTRICT IV
1220 St. Francis Dr., Santa Fe, NM 87505

State of New Mexico
Energy, Minerals and Natural Resources Department

Form C-102
Revised October 12, 2005

Submit to Appropriate District Office
State Lease-4 copies
Fee Lease-3 copies

OIL CONSERVATION DIVISION

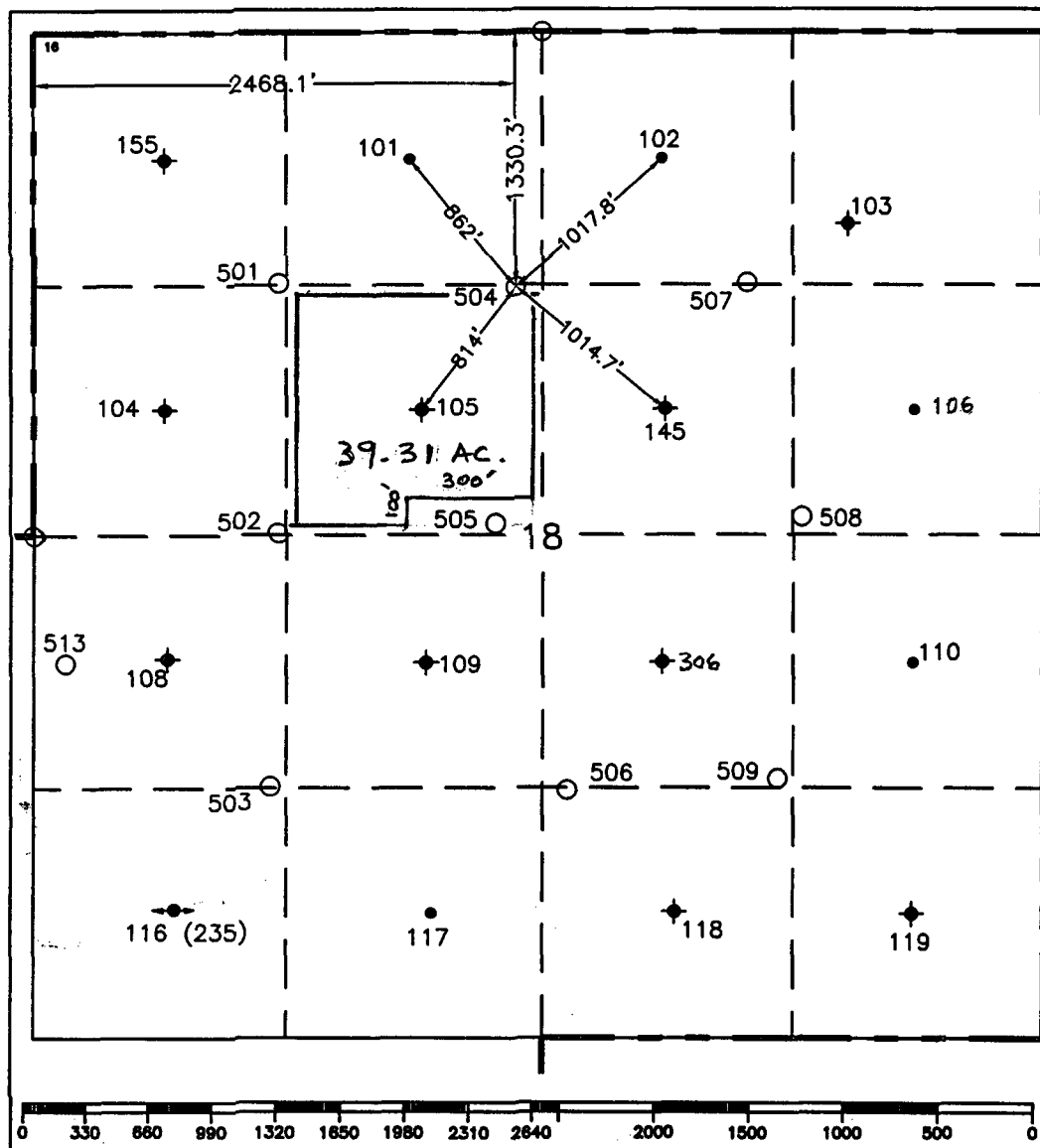
1220 South St. Francis Drive
Santa Fe, NM 87505

☐ AMENDED REPORT

WELL LOCATION AND ACREAGE DEDICATION PLAT

1 API Number		2 Pool Code		3 Pool Name Jalmat; Langlie Mattix					
4 Property Code		5 Property Name Cooper Jal Unit				6 Well Number 504			
7 OGRID No. 193003		8 Operator Name TORCH ENERGY SERVICES, INC.				9 Elevation 3296'			
10 Surface Location									
UL or lot no. F	Section 18	Township 24-S	Range 37-E	Lot Idn	Feet from the 1330.3'	North/South line North	Feet from the 2468.1'	East/West line West	7 County Lea
11 Bottom Hole Location If Different From Surface									
UL or lot no.	Section	Township	Range	Lot Idn	Feet from the	North/South line	Feet from the	East/West line	7 County
12 Dedicated Acres 40		13 Joint or Infill		14 Consolidation Code		15 Order No.			

NO ALLOWABLE WILL BE ASSIGNED TO THIS COMPLETION UNTIL ALL INTERESTS HAVE BEEN CONSOLIDATED
OR A NON-STANDARD UNIT HAS BEEN APPROVED BY THE DIVISION.



17 OPERATOR CERTIFICATION I hereby certify that the information contained herein is true and complete to the best of my knowledge and belief, and that this organization either owns a working interest or unleased mineral interest in the land including the proposed bottom hole location or has a right to drill this well at this location pursuant to a contract with an owner of such a mineral or working interest or to a voluntary pooling agreement or a compulsory pooling order heretofore entered by the division.	
Signature <i>Jim Kidd</i>	Date 10/30/06
Printed Name Jim Kidd	
18 SURVEYOR CERTIFICATION I hereby certify that the well location shown on this plat was plotted from field notes of actual surveys made by me or under my supervision, and that the same is true and correct to the best of my knowledge and belief.	
September 19 & 21, 2006	
Date of Survey	
Signature & Seal of Professional Surveyor: <i>[Signature]</i>	
Certificate No. 7254	

○ = Staked Location • = Producing Well ● = Injection Well ◇ = Water Supply Well ◆ = Plugged & Abandon Well
⊙ = Found Section Corner, 2 or 3" Iron Pipe & GLO B.C. ◦ = Found 1/4 Section Corner, 1" Iron Pipe & GLO B.C.

ADDITIONAL INFORMATION ON THE LOCATION

State Plane Coordinates			
Northing 445977.02		Easting 891091.90'	
Latitude 32°13'15.626"		Longitude 103°12'08.498"	
Zone	North American Datum	Combined Grid Factor	Coordinate File
East	1983/86	0.99988900	Coop_Jal.Crd
Drawing File Coop_Jal.Dwg		Field Book LEA #24, Pg. 4	

DISTRICT 1
1625 N. French Dr., Hobbs, NM 88240

DISTRICT II
1301 W. Grand Ave., Artesia, NM 88210

DISTRICT III
1000 Rio Brazos Rd., Aztec, NM 87410

DISTRICT IV
1220 St. Francis Dr., Santa Fe, NM 87505

State of New Mexico
Energy, Minerals and Natural Resources Department

Form C-1021
Revised October 12, 2005

Submit to Appropriate District Office
State Lease-4 copies
Fee Lease-3 copies

OIL CONSERVATION DIVISION

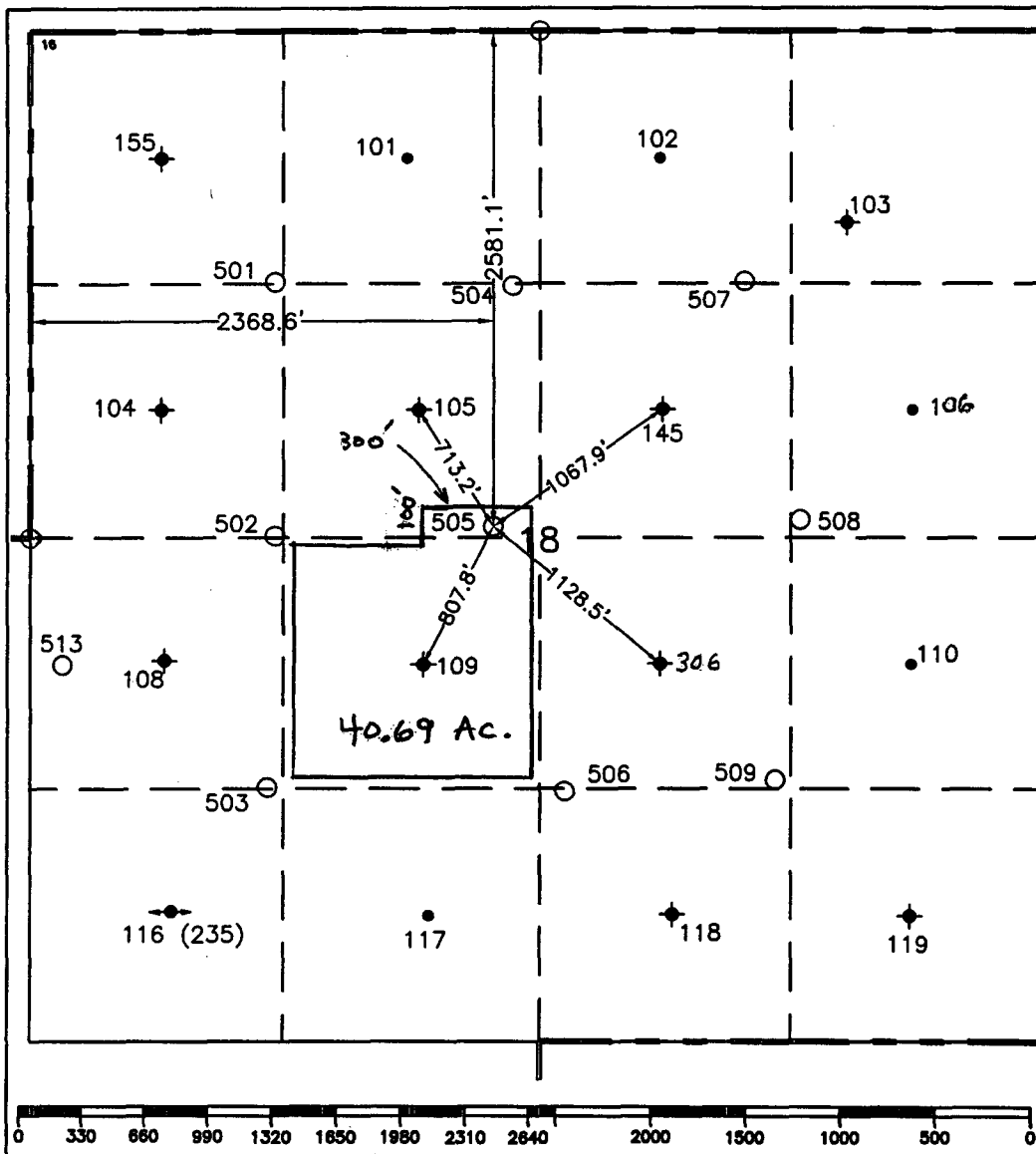
1220 South St. Francis Drive
Santa Fe, NM 87505

☐ AMENDED REPORT

WELL LOCATION AND ACREAGE DEDICATION PLAT

1 API Number		2 Pool Code		3 Pool Name Jalmat; Langlie Mattix					
4 Property Code		5 Property Name Cooper Jal Unit						6 Well Number 505	
7 OGRID No. 193003		8 Operator Name TORCH ENERGY SERVICES, INC.						9 Elevation 3301'	
10 Surface Location									
UL or lot no. F	Section 18	Township 24-S	Range 37-E	Lot Idn	Feet from the 2581.1'	North/South line North	Feet from the 2368.6'	East/West line West	7 County Lea
11 Bottom Hole Location If Different From Surface									
UL or lot no.	Section	Township	Range	Lot Idn	Feet from the	North/South line	Feet from the	East/West line	7 County
12 Dedicated Acres 40		13 Joint or Infill		14 Consolidation Code		15 Order No.			

NO ALLOWABLE WILL BE ASSIGNED TO THIS COMPLETION UNTIL ALL INTERESTS HAVE BEEN CONSOLIDATED
OR A NON-STANDARD UNIT HAS BEEN APPROVED BY THE DIVISION.



17 OPERATOR CERTIFICATION
I hereby certify that the information contained herein is true and complete to the best of my knowledge and belief, and that this organization either owns a working interest or unleased mineral interest in the land including the proposed bottom hole location or has a right to drill this well at this location pursuant to a contract with an owner of such a mineral or working interest or to a voluntary pooling agreement or a compulsory pooling order heretofore entered by the division.

Jim Kidd 10/30/06
Signature Date

Jim Kidd
Printed Name

18 SURVEYOR CERTIFICATION

I hereby certify that the well location shown on this plat was plotted from field notes of actual surveys made by me or under my supervision, and that the same is true and correct to the best of my knowledge and belief.

September 19 & 21, 2006
Date of Survey

Signature & Seal of Professional Surveyor:

[Signature]
Certificate No. 7254

○ = Staked Location • = Producing Well ● = Injection Well ◇ = Water Supply Well ✕ = Plugged & Abandon Well
⊙ = Found Section Corner, 2 or 3" Iron Pipe & GLO B.C. ○ = Found 1/4 Section Corner, 1" Iron Pipe & GLO B.C.

ADDITIONAL INFORMATION ON THE LOCATION

State Plane Coordinates			
Northing 444725.02		Easting 891007.29	
Latitude 32°13'03.248"		Longitude 103°12'09.636"	
Zone	North American Datum	Combined Grid Factor	Coordinate File
East	1983/86	0.99988900	Coop_Jal.Crd
Drawing File Coop_Jal.Dwg		Field Book LEA #24, Pg. 5	

DISTRICT I
1625 N. French Dr., Hobbs, NM 88240

DISTRICT II
1301 W. Grand Ave., Artesia, NM 88210

DISTRICT III
1000 Rio Brazos Rd., Aztec, NM 87410

DISTRICT IV
1220 St. Francis Dr., Santa Fe, NM 87505

State of New Mexico
Energy, Minerals and Natural Resources Department

Form C-1021
Revised October 12, 2005

Submit to Appropriate District Office
State Lease-4 copies
Fee Lease-3 copies

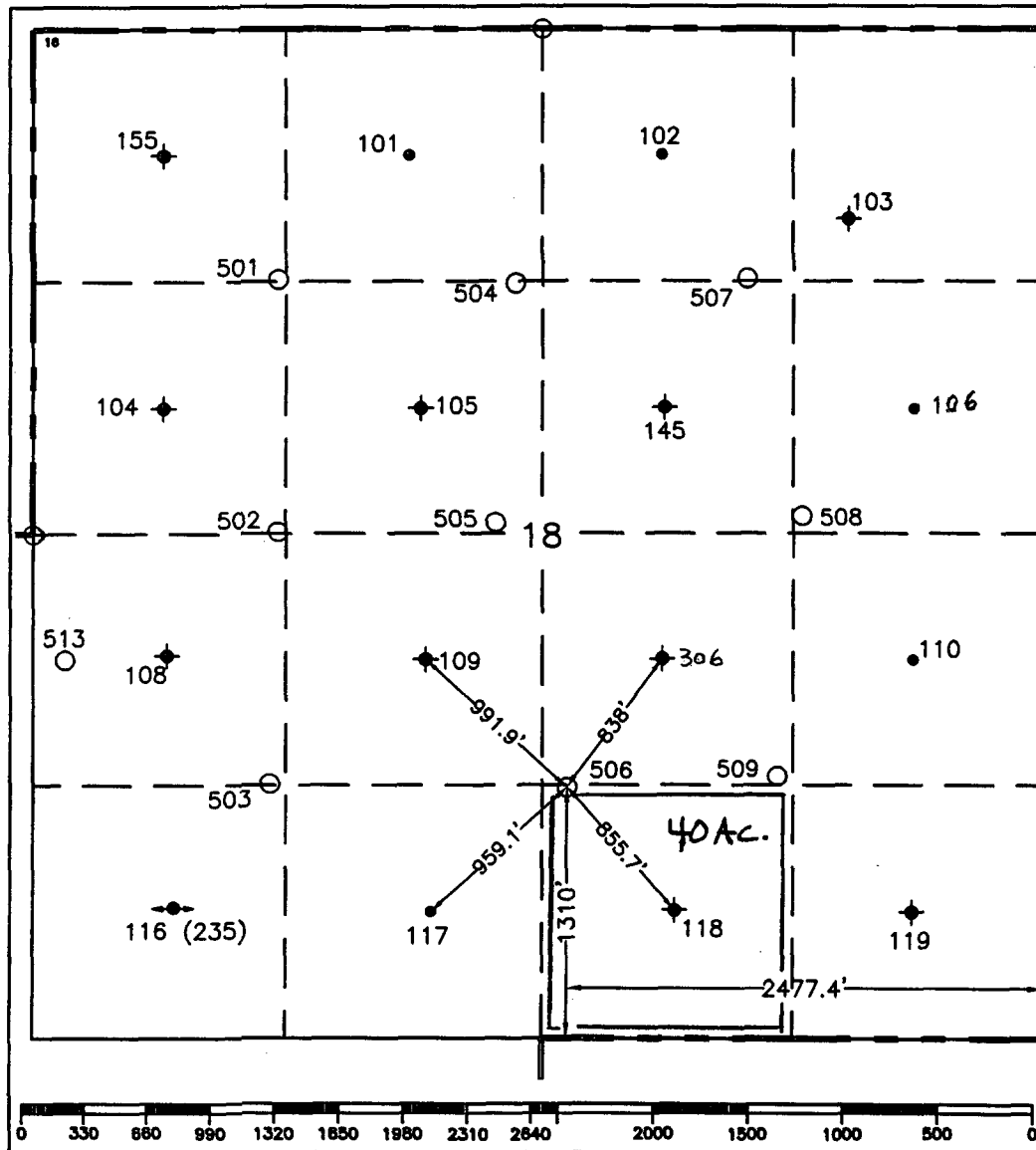
OIL CONSERVATION DIVISION
1220 South St. Francis Drive
Santa Fe, NM 87505

☐ AMENDED REPORT

WELL LOCATION AND ACREAGE DEDICATION PLAT

¹ API Number		² Pool Code		³ Pool Name Jalmat; Langlie Mattix					
⁴ Property Code		⁵ Property Name Cooper Jal Unit						⁶ Well Number 506	
⁷ OGRID No. 193003		⁸ Operator Name TORCH ENERGY SERVICES, INC.						⁹ Elevation 3329'	
¹⁰ Surface Location									
UL or lot no. 0	Section 18	Township 24-S	Range 37-E	Lot Idn	Feet from the 1310'	North/South line South	Feet from the 2477.4'	East/West line East	⁷ County Lea
¹¹ Bottom Hole Location If Different From Surface									
UL or lot no.	Section	Township	Range	Lot Idn	Feet from the	North/South line	Feet from the	East/West line	⁷ County
¹² Dedicated Acres 40		¹³ Joint or Infill		¹⁴ Consolidation Code		¹⁵ Order No.			

NO ALLOWABLE WILL BE ASSIGNED TO THIS COMPLETION UNTIL ALL INTERESTS HAVE BEEN CONSOLIDATED
OR A NON-STANDARD UNIT HAS BEEN APPROVED BY THE DIVISION.



¹⁷ OPERATOR CERTIFICATION
I hereby certify that the information contained herein is true and complete to the best of my knowledge and belief, and that this organization either owns a working interest or unleased mineral interest in the land including the proposed bottom hole location or has a right to drill this well at this location pursuant to a contract with an owner of such a mineral or working interest or to a voluntary pooling agreement or a compulsory pooling order heretofore entered by the division.

Signature *Jim Kidd* Date 10/30/06
Printed Name Jim Kidd

¹⁸ SURVEYOR CERTIFICATION
I hereby certify that the well location shown on this plat was plotted from field notes of actual surveys made by me or under my supervision, and that the same is true and correct to the best of my knowledge and belief.

September 19 & 21, 2006
Date of Survey

Signature & Seal of Professional Surveyor:
John H. H. H.
Certificate No. 7254

○ = Staked Location • = Producing Well ● = Injection Well ◇ = Water Supply Well ⊕ = Plugged & Abandon Well
⊙ = Found Section Corner, 2 or 3" Iron Pipe & GLO B.C. ○ = Found 1/4 Section Corner, 1" Iron Pipe & GLO B.C.

ADDITIONAL INFORMATION ON THE LOCATION

State Plane Coordinates		Northing 443338.31		Easting 891394.95	
Latitude 32°12'49.487"		Longitude 103°12'05.294"			
Zone North American Datum		Combined Grid Factor		Coordinate File	
East 1983/86		0.99988900		Coop_Jal.Crd	
Drawing File		Field Book			
Coop_Jal.Dwg		LEA #24, Pg. 6			

DISTRICT 1
1625 N. French Dr., Hobbs, NM 88240

DISTRICT II
1301 W. Grand Ave., Artesia, NM 88210

DISTRICT III
1000 Rio Brazos Rd., Aztec, NM 87410

DISTRICT IV
1220 St. Francis Dr., Santa Fe, NM 87505

State of New Mexico
Energy, Minerals and Natural Resources Department

Form C-102
Revised October 12, 2005

Submit to Appropriate District Office
State Lease-4 copies
Fee Lease-3 copies

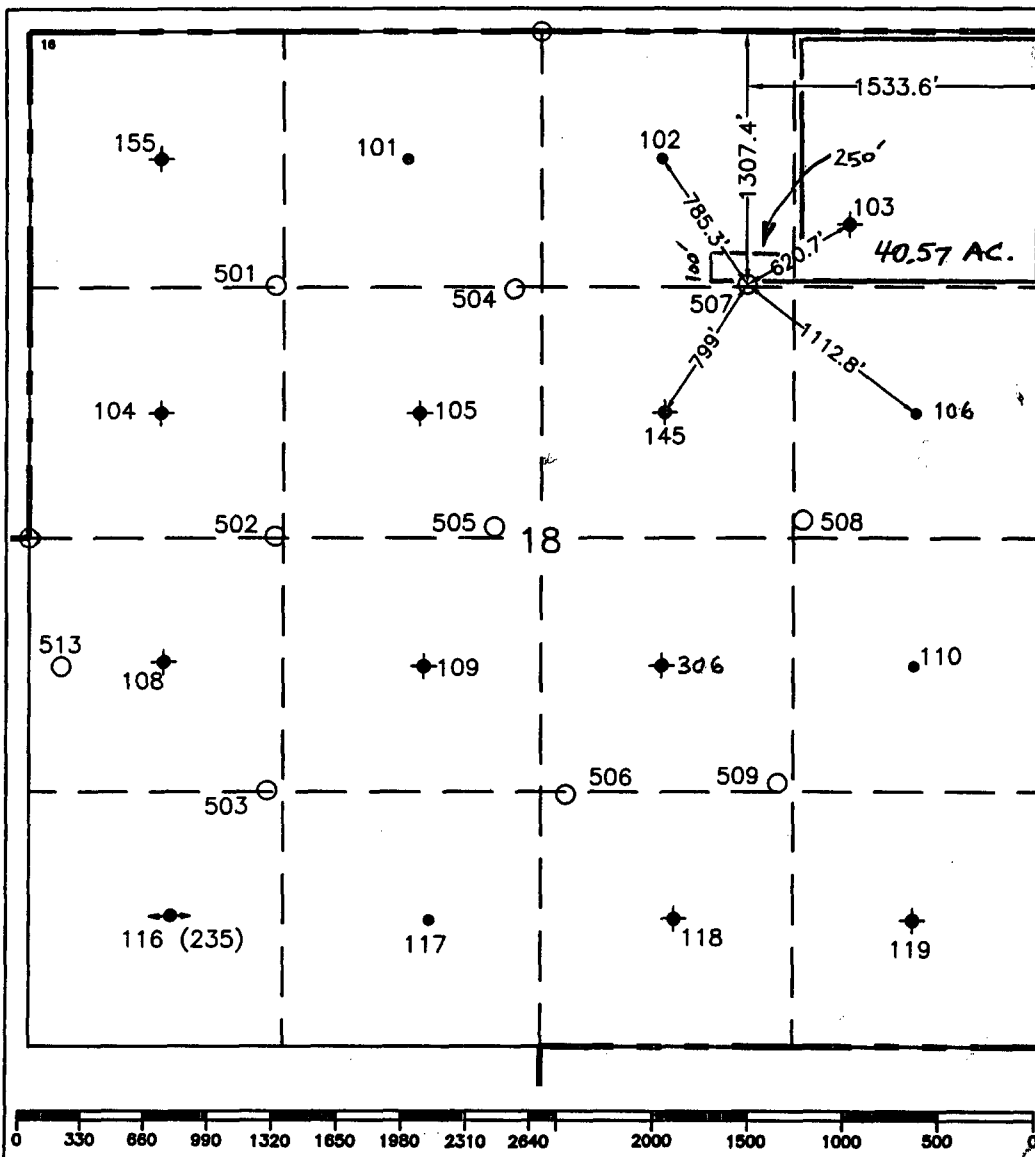
OIL CONSERVATION DIVISION
1220 South St. Francis Drive
Santa Fe, NM 87505

☐ AMENDED REPORT

WELL LOCATION AND ACREAGE DEDICATION PLAT

¹ API Number		² Pool Code		³ Pool Name Jalmat; Langlie Mattix					
⁴ Property Code		⁵ Property Name Cooper Jal Unit						⁶ Well Number 507	
⁷ OGRID No. 193003		⁸ Operator Name TORCH ENERGY SERVICES, INC.						⁹ Elevation 3291'	
¹⁰ Surface Location									
UL or lot no. B	Section 18	Township 24-S	Range 37-E	Lot Idn	Feet from the 1307.4'	North/South line North	Feet from the 1533.6'	East/West line East	⁷ County Lea
¹¹ Bottom Hole Location If Different From Surface									
UL or lot no.	Section	Township	Range	Lot Idn	Feet from the	North/South line	Feet from the	East/West line	⁷ County
¹² Dedicated Acres 40		¹³ Joint or Infill		¹⁴ Consolidation Code		¹⁵ Order No.			

NO ALLOWABLE WILL BE ASSIGNED TO THIS COMPLETION UNTIL ALL INTERESTS HAVE BEEN CONSOLIDATED
OR A NON-STANDARD UNIT HAS BEEN APPROVED BY THE DIVISION.



¹⁷ OPERATOR CERTIFICATION
I hereby certify that the information contained herein is true and complete to the best of my knowledge and belief, and that this organization either owns a working interest or unleased mineral interest in the land including the proposed bottom hole location or has a right to drill this well at this location pursuant to a contract with an owner of such a mineral or working interest or to a voluntary pooling agreement or a compulsory pooling order heretofore entered by the division.

Signature *Jim Kidd* Date 10/30/06

Printed Name
Jim Kidd

¹⁸ SURVEYOR CERTIFICATION

I hereby certify that the well location shown on this plat was plotted from field notes of actual surveys made by me or under my supervision, and that the same is true and correct to the best of my knowledge and belief.

September 19 & 21, 2006

Date of Survey

Signature & Seal of Professional Surveyor:

[Signature]

Certificate No.

7254

○ = Staked Location • = Producing Well ● = Injection Well ◇ = Water Supply Well ◆ = Plugged & Abandon Well
⊙ = Found Section Corner, 2 or 3" Iron Pipe & GLO B.C. ○ = Found /4 Section Corner, 1" Iron Pipe & GLO B.C.

ADDITIONAL INFORMATION ON THE LOCATION

State Plane Coordinates		Northing 446015.04		Easting 892307.00	
Latitude 32°13'15.876"		Longitude 103°11'54.351"			
Zone North American Datum		Combined Grid Factor		Coordinate File	
East 1983/86		0.99988900		Coop_Jal.Crd	
Drawing File Coop_Jal.Dwg		Field Book LEA #24, Pg. 7			

DISTRICT 1
1625 N. French Dr., Hobbs, NM 88240
DISTRICT II
1301 W. Grand Ave., Artesia, NM 88210
DISTRICT III
1000 Rio Brazos Rd., Aztec, NM 87410
DISTRICT IV
1220 St. Francis Dr., Santa Fe, NM 87505

State of New Mexico
Energy, Minerals and Natural Resources Department

Form C-102
Revised October 12, 2005

Submit to Appropriate District Office
State Lease-4 copies
Fee Lease-3 copies

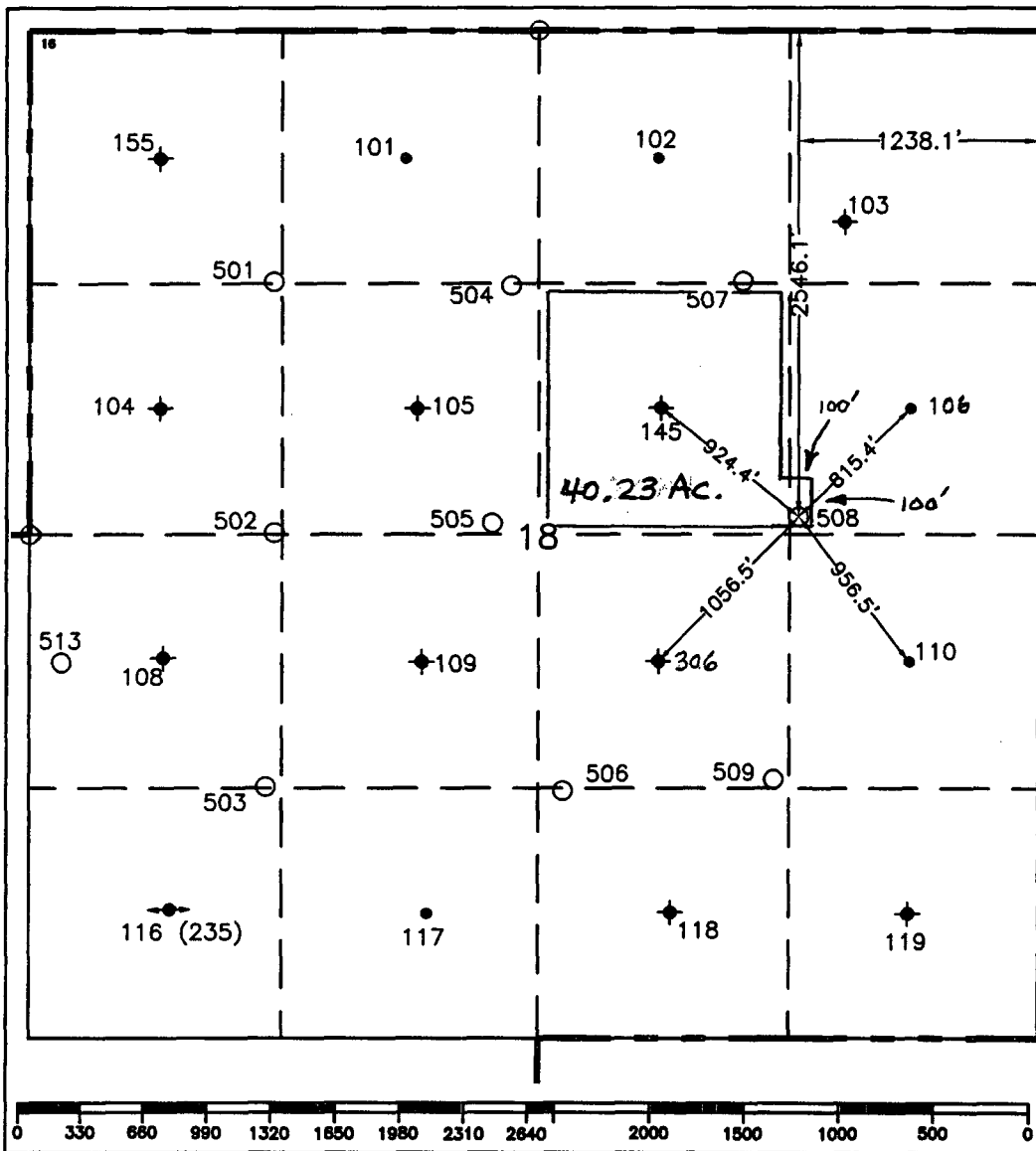
OIL CONSERVATION DIVISION
1220 South St. Francis Drive
Santa Fe, NM 87505

☐ AMENDED REPORT

WELL LOCATION AND ACREAGE DEDICATION PLAT

1 API Number		2 Pool Code		3 Pool Name Jalmat; Langlie Mattix					
4 Property Code		5 Property Name Cooper Jal Unit						6 Well Number 508	
7 OGRID No. 193003		8 Operator Name TORCH ENERGY SERVICES, INC.						9 Elevation 3297'	
10 Surface Location									
UL or lot no. H	Section 18	Township 24-S	Range 37-E	Lot Idn	Feet from the 2546.1'	North/South line North	Feet from the 1238.1'	East/West line East	7 County Lea
11 Bottom Hole Location If Different From Surface									
UL or lot no.	Section	Township	Range	Lot Idn	Feet from the	North/South line	Feet from the	East/West line	7 County
12 Dedicated Acres 40		13 Joint or Infill		14 Consolidation Code		15 Order No.			

NO ALLOWABLE WILL BE ASSIGNED TO THIS COMPLETION UNTIL ALL INTERESTS HAVE BEEN CONSOLIDATED
OR A NON-STANDARD UNIT HAS BEEN APPROVED BY THE DIVISION.



17 OPERATOR CERTIFICATION
I hereby certify that the information contained herein is true and complete to the best of my knowledge and belief, and that this organization either owns a working interest or unleased mineral interest in the land including the proposed bottom hole location or has a right to drill this well at this location pursuant to a contract with an owner of such a mineral or working interest or to a voluntary pooling agreement or a compulsory pooling order heretofore entered by the division.

Signature *Jim Kidd* Date *10/30/06*
Printed Name
Jim Kidd

18 SURVEYOR CERTIFICATION
I hereby certify that the well location shown on this plat was plotted from field notes of actual surveys made by me or under my supervision, and that the same is true and correct to the best of my knowledge and belief.

September 19 & 21, 2006
Date of Survey
Signature & Seal of Professional Surveyor:

[Signature]
Certificate No.
7254

○ = Staked Location • = Producing Well ● = Injection Well ◇ = Water Supply Well ◆ = Plugged & Abandon Well
⊙ = Found Section Corner, 2 or 3" Iron Pipe & GLO B.C. ○ = Found /4 Section Corner, 1" Iron Pipe & GLO B.C.

ADDITIONAL INFORMATION ON THE LOCATION

State Plane Coordinates Northing 444780.10		Easting 892617.15	
Latitude 32°13'03.625"		Longitude 103°11'50.893"	
Zone East	North American Datum 1983/86	Combined Grid Factor 0.99988900	Coordinate File Coop_Jal.Crd
Drawing File Coop_Jal.Dwg		Field Book LEA #24, Pg. 8	

DISTRICT 1
1625 N. French Dr., Hobbs, NM 88240

DISTRICT II
1301 W. Grand Ave., Artesia, NM 88210

DISTRICT III
1000 Rio Brazos Rd., Aztec, NM 87410

DISTRICT IV
1220 St. Francis Dr., Santa Fe, NM 87505

State of New Mexico
Energy, Minerals and Natural Resources Department

OIL CONSERVATION DIVISION

1220 South St. Francis Drive
Santa Fe, NM 87505

Form C-102
Revised October 12, 2005

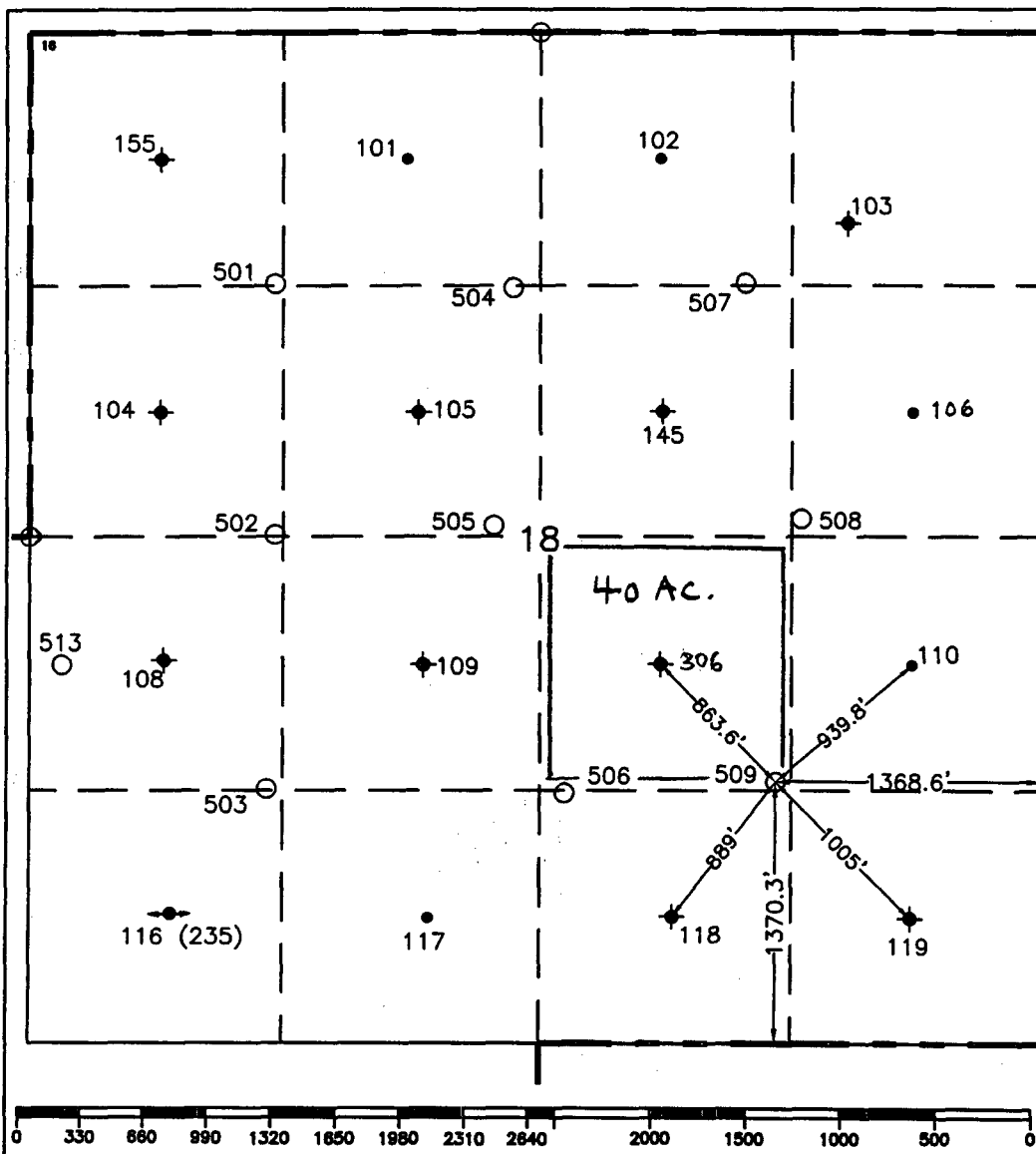
Submit to Appropriate District Office
State Lease-4 copies
Fee Lease-3 copies

☐ AMENDED REPORT

WELL LOCATION AND ACREAGE DEDICATION PLAT

¹ API Number		² Pool Code		³ Pool Name					
				Jalmat; Langlie Mattix					
⁴ Property Code		⁵ Property Name						⁶ Well Number	
		Cooper Jal Unit						509	
⁷ OGRID No.		⁸ Operator Name						⁹ Elevation	
193003		TORCH ENERGY SERVICES, INC.						3299'	
¹⁰ Surface Location									
UL or lot no.	Section	Township	Range	Lot Idn	Feet from the	North/South line	Feet from the	East/West line	⁷ County
J	18	24-S	37-E		1370.3'	South	1368.6'	East	Lea
¹¹ Bottom Hole Location If Different From Surface									
UL or lot no.	Section	Township	Range	Lot Idn	Feet from the	North/South line	Feet from the	East/West line	⁷ County
¹² Dedicated Acres		¹³ Joint or Infill		¹⁴ Consolidation Code		¹⁵ Order No.			
40									

NO ALLOWABLE WILL BE ASSIGNED TO THIS COMPLETION UNTIL ALL INTERESTS HAVE BEEN CONSOLIDATED
OR A NON-STANDARD UNIT HAS BEEN APPROVED BY THE DIVISION.



¹⁷ OPERATOR CERTIFICATION

I hereby certify that the information contained herein is true and complete to the best of my knowledge and belief, and that this organization either owns a working interest or unleased mineral interest in the land including the proposed bottom hole location or has a right to drill this well at this location pursuant to a contract with an owner of such a mineral or working interest or to a voluntary pooling agreement or a compulsory pooling order heretofore entered by the division.

Jim Kidd 10/30/06
Signature Date

Jim Kidd

Printed Name

¹⁸ SURVEYOR CERTIFICATION

I hereby certify that the well location shown on this plat was plotted from field notes of actual surveys made by me or under my supervision, and that the same is true and correct to the best of my knowledge and belief.

September 19 & 21, 2006

Date of Survey

Signature & Seal of Professional Surveyor:

[Signature]

Certificate No.

7254

○ = Staked Location • = Producing Well ↗ = Injection Well ◇ = Water Supply Well ✕ = Plugged & Abandon Well
⊙ = Found Section Corner, 2 or 3" Iron Pipe & GLO B.C. ○ = Found /4 Section Corner, 1" Iron Pipe & GLO B.C.

ADDITIONAL INFORMATION ON THE LOCATION

State Plane Coordinates			
Northing 443412.72		Easting 892502.95	
Latitude 32°12'50.108"		Longitude 103°11'52.390"	
Zone	North American Datum	Combined Grid Factor	Coordinate File
East	1983/86	0.99988900	Coop_Jal.Crd
Drawing File		Field Book	
Coop_Jal.Dwg		LEA #24, Pg. 9	