

W. E. "BILL" HENDON, JR.
Petroleum Consultant
DRILLING, COMPLETION & EVALUATION
4615 Pasadena - Phone 915-694-4713
MIDLAND, TEXAS 79701

RECEIVED
AUG 16 1971
OIL CONSERVATION COMM.

317
Galt
NSL
issue 8-16-71
Rule 104 F
August 14, 1971

New Mexico Oil Conservation Commission
Santa Fe, New Mexico

Attention: Mr. George Hatch

Dear Sir:

Titan Wells, Inc. has filed application to drill a Cisco-Canyon test in Section 11, T-21-S, R-24-E.

This location is 800' FSL and 2460' FEL, and as such is not a standard location. Administrative approval is here-by requested for this site. This location is requested because of the regged terrain in the area, and there will be less surface damage in the requested location.

Enclosed please find copy of waiver to offset operator.

Very truly yours,

William E. Hendon Jr.

William E. Hendon, Jr.

Enc.

N. M. O. C. C. COPY

UNITED STATES
DEPARTMENT OF THE INTERIOR
GEOLOGICAL SURVEYForm approved.
Budget Bureau No. 42-R1425.SUBMIT IN TRIPLICATE
(Other instructions on reverse)

AUG 18 1971

LEASE DESIGNATION AND SERIAL NO.

NM 0554 758

APPLICATION FOR PERMIT TO DRILL, DEEPEN, OR PLUG BACK

1a. TYPE OF WORK

DRILL ☒ *Aliment*DEEPEN ☐PLUG BACK ☐

b. TYPE OF WELL

OIL
WELL ☐GAS
WELL ☒

OTHER

SINGLE
ZONE ☒MULTIPLE
ZONE ☐

2. NAME OF OPERATOR

Titan Wells, Inc.

3. ADDRESS OF OPERATOR

201 Washington St., Marietta, Ohio

4. LOCATION OF WELL (Report location clearly and in accordance with any State requirements.)*

At surface

800' FSL & 2460 FEL Sec. 11, T-21-S, R-24-E

At proposed prod. zone

same

14. DISTANCE IN MILES AND DIRECTION FROM NEAREST TOWN OR POST OFFICE*

13 miles NW of Carlsbad

15. DISTANCE FROM PROPOSED*

LOCATION TO NEAREST
PROPERTY OR LEASE LINE, FT.
(Also to nearest drlg. unit line, if any)

800'

16. NO. OF ACRES IN LEASE

320

17. NO. OF ACRES ASSIGNED

TO THIS WELL 320

18. DISTANCE FROM PROPOSED LOCATION*

TO NEAREST WELL, DRILLING, COMPLETED,
OR APPLIED FOR, ON THIS LEASE, FT.

none

19. PROPOSED DEPTH

8600' (Cisco)

20. ROTARY OR CABLE TOOLS

Rotary

21. ELEVATIONS (Show whether DF, RT, GR, etc.)

3654' GL (est.)

22. APPROX. DATE WORK WILL START*

Aug. 14, 1971

23. PROPOSED CASING AND CEMENTING PROGRAM

SIZE OF HOLE	SIZE OF CASING	WEIGHT PER FOOT	SETTING DEPTH	QUANTITY OF CEMENT
17"	13 3/8"	48#	350'	350 SX circ.
11 3/4"	8 5/8"	24 & 32#	3200'	850 SX circ.
7 7/8"	4 1/2"	11.6#	8600'	300 SX

note: change of location

C/and w/OCC/santa Fe

AUG 17 1971

O. C. C.
ARTESIA, OFFICE

RECEIVED

AUG 16 1971

U. S. GEOLOGICAL SURVEY
ARTESIA, NEW MEXICO

IN ABOVE SPACE DESCRIBE PROPOSED PROGRAM: If proposal is to deepen or plug back, give data on present productive zone and proposed new productive zone. If proposal is to drill or deepen directionally, give pertinent data on subsurface locations and measured and true vertical depths. Give blowout preventer program, if any.

24.

SIGNED

William E. Hinton Jr.

TITLE

Consultant/agent

DATE

(This space for Federal or State office use)

AUG 13 1971

PERMIT NO.

APPROVAL DATE

APPROVED BY

John A. Brown

DISTRICT ENGINEER

DATE

AUG 16 1971

CONDITIONS OF APPROVAL, IF ANY

DECLARED WATER BASIN

CEMENT BEHIND THE 138-88
CASING MUST BE CIRCULATED

*See Instructions On Reverse Side

NOTIFY USGS IN SUFFICIENT TIME TO
WITNESS CEMENTING THE 138-88 CASING.

NEW MEXICO OIL CONSERVATION COMMISSION
WELL LOCATION AND ACREAGE DEDICATION PLAT

RECEIVED
AUG 18 1971

Form C-102
Supersedes C-128
Effective 1-1-65

All distances must be from the outer boundaries of the Section

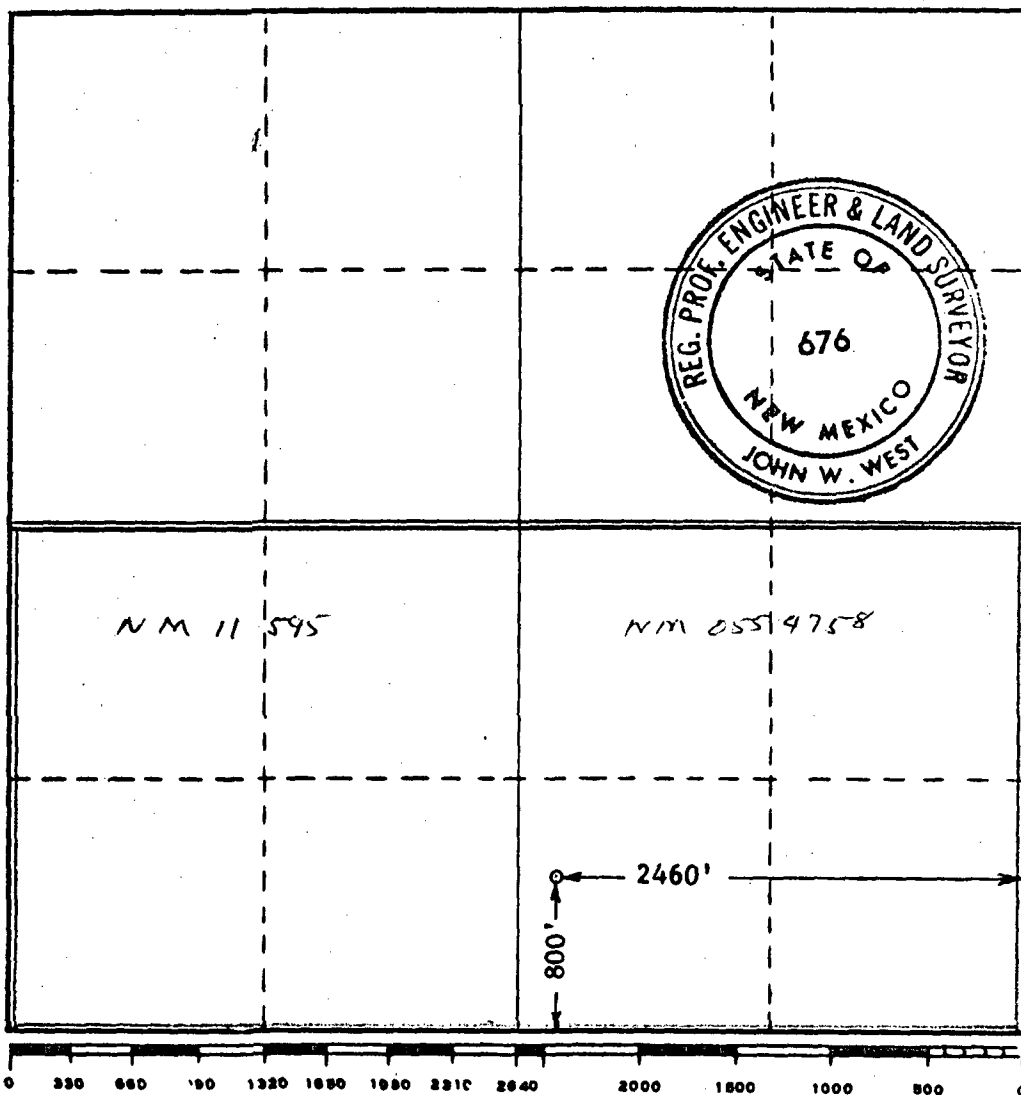
Operator TITAN WELLS, INC.		Lease FED.		Well No. 1	
Unit Letter O	Section 11	Township 21 SOUTH	Range 24 EAST	County EDDY	
Actual Footage Location of Well: 2460 feet from the EAST line and 800 feet from the SOUTH line					
Ground Level Elev. 3654	Producing Formation Wildcat		Pool Wildcat	Dedicated Acreage: 3.20 Acres	

- Outline the acreage dedicated to the subject well by colored pencil or hachure marks on the plat below.
- If more than one lease is dedicated to the well, outline each and identify the ownership thereof (both as to working interest and royalty).
Olds Pt & Co. NM 11595
Olds Pt & Co. NM 0554758 / *same interests*
- If more than one lease of different ownership is dedicated to the well, have the interests of all owners been consolidated by communitization, unitization, force-pooling, etc?

☒ Yes ☐ No If answer is "yes," type of consolidation communitization

If answer is "no," list the owners and tract descriptions which have actually been consolidated. (Use reverse side of this form if necessary.)

No allowable will be assigned to the well until all interests have been consolidated (by communitization, unitization, forced-pooling, or otherwise) or until a non-standard unit, eliminating such interests, has been approved by the Commission.



CERTIFICATION

I hereby certify that the information contained herein is true and complete to the best of my knowledge and belief.

William E. London Jr.

Name
Consultant

Position
Titan Wells Inc

Company
8-13-71

Date

RECEIVED
AUG 18 1971
U.S. GEOLOGICAL SURVEY
ARTESIA, NEW MEXICO

Date Surveyed

AUGUST 4, 1971

Registered Professional Engineer
and/or Land Surveyor

John W. West

Certificate No. **676**