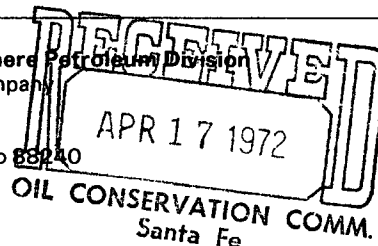




*NSL
Correction
issue
4-17-72*

L. P. Thompson
Division Manager
Production Department
Hobbs Division

Western Hemisphere Petroleum Division
Continental Oil Company
P. O. 460
1001 North Turner
Hobbs, New Mexico 88240
(505) 393-4141



April 13, 1972

New Mexico Oil Conservation Commission
P. O. Box 2088
Santa Fe, New Mexico 87501

Attention Mr. A. L. Porter, Jr., Secretary Director

Gentlemen:

Application for Approval of Unorthodox Location for our MCA Unit No. 312

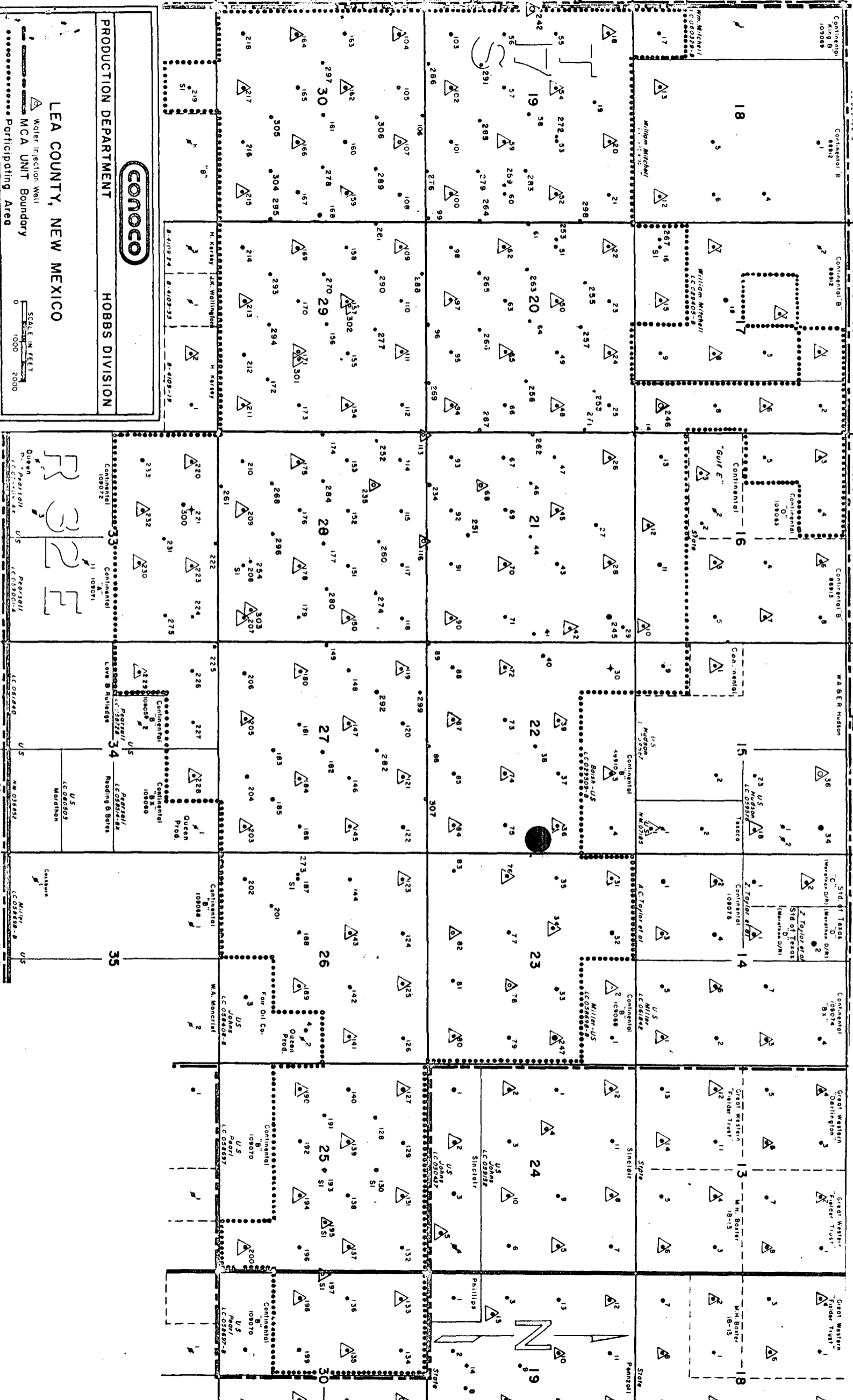
On April 5, 1972, we asked for an unorthodox location approval for the MCA Unit No. 312, located 2565' FNL and 75' FWL of Section 23, Unit Letter "E", T-17S, R-32E, Lea County, New Mexico. We received approval for this unorthodox location by Administrative Order No. NSL-548, dated April 7, 1972. It is necessary that we move this location to 2565' FNL and 125' FEL of Section 22, Unit Letter "H", T-17S, R-32E, Lea County, New Mexico. It is respectfully requested that immediate approval of this revised location be given.

Yours very truly,

dw
Copies to:
New Mexico Oil Conservation Commission
P. O. Box 1980
Hobbs, New Mexico 88240

United States Geological Survey (2)
P. O. Box 1157
Hobbs, New Mexico 88240

RLA: JJB: JWK:



CONOCO

PRODUCTION DEPARTMENT

HOBBS DIVISION

LEA COUNTY, NEW MEXICO

MCA UNIT Boundary

Participating Area

SCALE IN FEET

0 1000 2000



2/24 - 548
NSL
issue
4-7-72

L. P. Thompson
Division Manager
Production Department
Hobbs Division

Western Hemisphere Petroleum Division
Continental Oil Company
P. O. 460
1001 North Turner
Hobbs, New Mexico 88240
(505) 393-4141

RECEIVED
APR 7 1972

April 5, 1972

New Mexico Oil Conservation Commission (3)
P. O. Box 2088
Santa Fe, New Mexico 87501

Attention Mr. A. L. Porter, Jr., Secretary-Director

Gentlemen:

Application for Approval of Unorthodox Locations for the MCA Unit

Continental Oil Company, as operator for the MCA Unit, hereby requests approval under the Provisions of Order No. T-2403-A to drill the following wells.

MCA Unit - T-17S, R-32E, Lea County, New Mexico

<u>Well No.</u>	<u>Location</u>	<u>Section</u>	<u>Unit Letter</u>
309	1395' FNL & 1295' FEL	19	H
311	1295' FNL & 2615' FWL	26	C
312	2565' FNL & 75' FWL	23	E

The wells are being drilled in conjunction with our current in-fill drilling program, and should result in the more efficient recovery of oil in this immediate area. It is respectfully requested that immediate approval of these locations be given.

Yours very truly,

dw
CC:
New Mexico Oil Conservation Commission
P. O. Box 1980
Hobbs, New Mexico 88240

United States Geological Survey (2)
P. O. Box 1157
Hobbs, New Mexico 88240

RLA JJB JWK

