

Mobil Oil Corporation

NSL - 608
Rec July 12

P. O. BOX 633
MIDLAND, TEXAS 79701

June 20, 1973

New Mexico Oil Conservation Commission (3)
P. O. Box 2088
Santa Fe, New Mexico 87501

Attn: Mr. A. L. Porter, Jr.

UNORTHODOX LOCATION
MOBIL OIL CORPORATION'S
MARSHALL COM, WELL #9
DRINKARD POOL
LEA COUNTY, NEW MEXICO

Gentlemen:

Under the provisions of Rule 104 (F), Mobil Oil Corporation respectfully requests authority to drill the subject well at an unorthodox location. The proposed location for this well is in Unit C, 840 ft from the north line and 1606 ft from the west line, Sec. 34, T-21-S, R-37-E, Lea County, New Mexico. This well is located in the City of Eunice and because of the topography, i.e., streets, alleys, utility lines, houses, etc., it cannot be drilled at an orthodox location.

The following items supporting this request are submitted in triplicate:

1. Form C-101 - Application to Drill, Deepen or Plug Back.
2. Form C-102 - Well Location and Acreage Dedication Plat.
3. Plat showing the offset operators and topographical conditions.

By copy of this letter and attachments Mobil is notifying the offset operators of this application and requesting their waiver of objection to the drilling of this well. These offset operators are:

Exxon Company, P. O. Box 1600, Midland, Texas 79701

Marathon Oil Company, P. O. Box 552, Midland, Texas 79701

Mobil is also sending a copy of this letter and attachments to the Mayor of the City of Eunice as notice of this application.


NMOCC
Santa Fe, NM

-2-

June 20, 1973

Should additional information concerning this matter be desired, please advise.

Yours truly,


J. A. Morris *For*
Production Engineering Supervisor

ADBond/cs
Attachments

cc: City of Eunice, New Mexico, Attn: Mayor Wooten -w/attach
Offset Operators - w/attach
NMOCC - Hobbs - w/attach

**NEW MEXICO OIL CONSERVATION COMMISSION
WELL LOCATION AND ACREAGE DEDICATION PLAT**

Form C-102
Supersedes C-128
Effective 1-1-65

All distances must be from the outer boundaries of the Section.

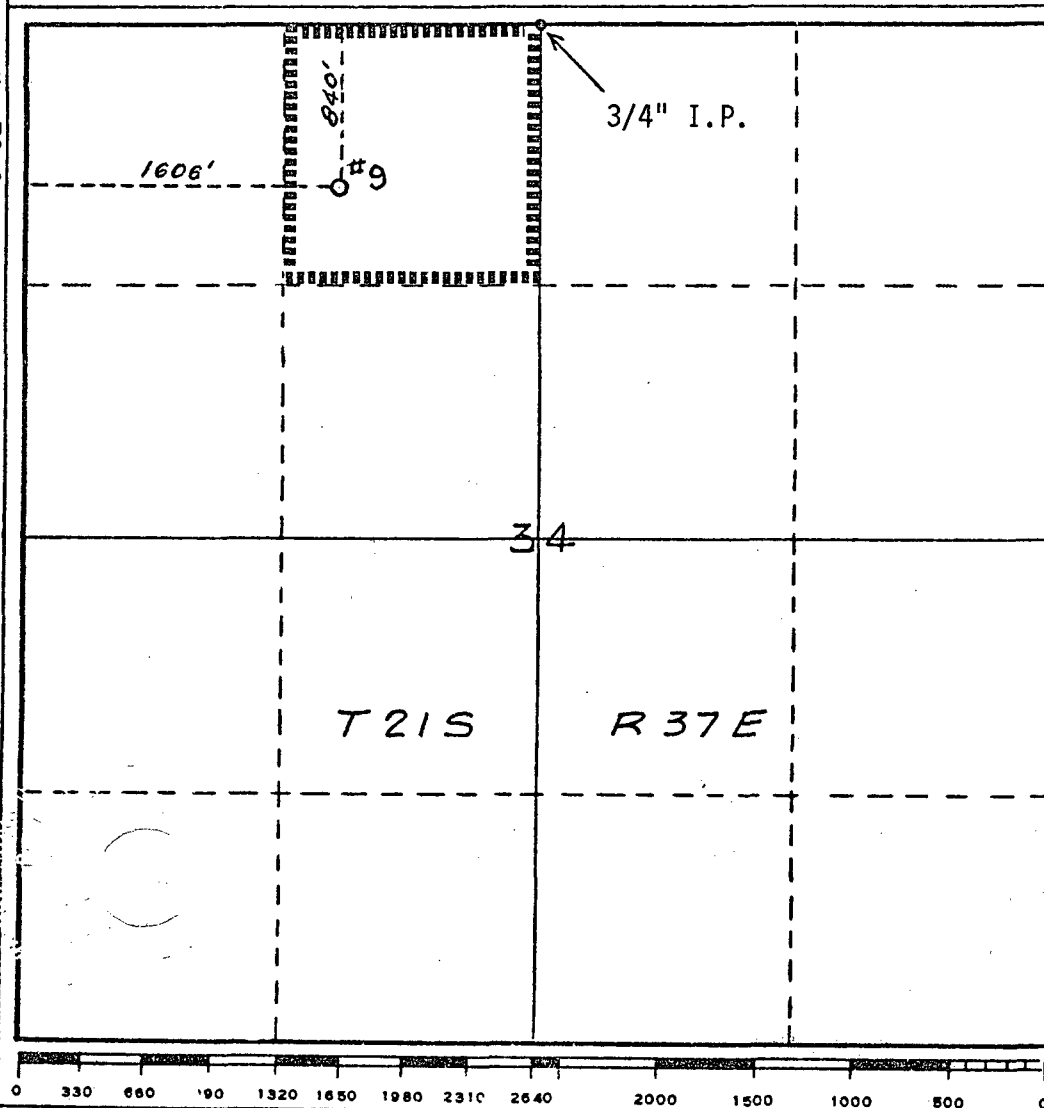
Operator Mobil Oil Corporation			Lease Marshall Com		Well No. 9
Unit Letter C	Section 34	Township 21-S	Range 37-E	County Lea	
Actual Footage Location of Well: <div style="display: flex; justify-content: space-between;"> 840 feet from the North line and 1606 feet from the West line </div>					
Ground Level Elev. 3424	Producing Formation Drinkard		Pool Drinkard		Dedicated Acreage: 40 Acres

1. Outline the acreage dedicated to the subject well by colored pencil or hachure marks on the plat below.
2. If more than one lease is dedicated to the well, outline each and identify the ownership thereof (both as to working interest and royalty).
3. If more than one lease of different ownership is dedicated to the well, have the interests of all owners been consolidated by communitization, unitization, force-pooling, etc?

☐ Yes ☐ No If answer is "yes," type of consolidation Communitization

If answer is "no," list the owners and tract descriptions which have actually been consolidated. (Use reverse side of this form if necessary.) _____

No allowable will be assigned to the well until all interests have been consolidated (by communitization, unitization, forced-pooling, or otherwise) or until a non-standard unit, eliminating such interests, has been approved by the Commission. **N 89°58' E - 2640'**



CERTIFICATION

I hereby certify that the information contained herein is true and complete to the best of my knowledge and belief.

A. D. Bond

Name
A. D. Bond
Position
Proration Staff Assistant
Company
Mobil Oil Corporation
Date
June 20, 1973

I hereby certify that the well location shown on this plat was plotted from field notes of actual surveys made by me or under my supervision, and that the same is true and correct to the best of my knowledge and belief.

H. A. Carson Jr.

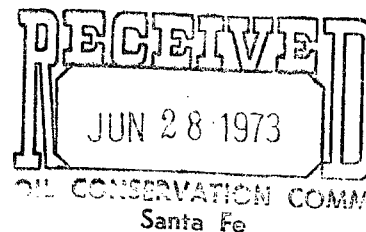
Date Surveyed
June 10, 1973
Registered Professional Engineer and/or Land Surveyor
Harvey A. Carson, Jr.
Certificate No.
5063

CONDITIONS OF APPROVAL, IF ANY:

W A I V E R

New Mexico Oil Conservation Commission
P. O. Box 2088
Santa Fe, New Mexico 87501

Attention: Mr. A. L. Porter, Jr.



UNORTHODOX LOCATION
MOBIL OIL CORPORATION'S
MARSHALL COM, WELL #9
DRINKARD POOL
LEA COUNTY, NEW MEXICO

Gentlemen:

The undersigned has been advised by Mobil Oil Corporation that they have made application with the New Mexico Oil Conservation Commission to drill the subject well at an unorthodox location caused by topographic conditions on their lease. Please be advised that, as an offset operator to this lease I (we) have no objection to the drilling of this well at a location 840 ft from the north line and 1606 ft from the west line, Sec. 34, T-21-S, R-37-E, Lea County, New Mexico.

Yours very truly.

Company: EXXON CORPORATION

Representative: *[Signature]*

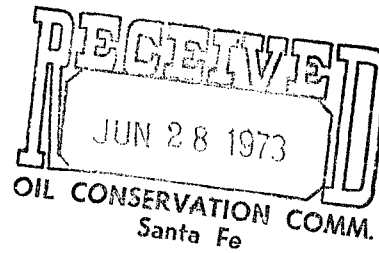
E. E. HAMMOND

Title: Operations Manager

Date: June 25, 1973

W A I V E R

New Mexico Oil Conservation Commission
P. O. Box 2088
Santa Fe, New Mexico 87501



Attention: Mr. A. L. Porter, Jr.


UNORTHODOX LOCATION
MOBIL OIL CORPORATION'S
MARSHALL COM, WELL #9
DRINKARD POOL
LEA COUNTY, NEW MEXICO

Gentlemen:

The undersigned has been advised by Mobil Oil Corporation that they have made application with the New Mexico Oil Conservation Commission to drill the subject well at an unorthodox location caused by topographic conditions on their lease. Please be advised that, as an offset operator to this lease I (we) have no objection to the drilling of this well at a location 840 ft from the north line and 1606 ft from the west line, Sec. 34, T-21-S, R-37-E, Lea County, New Mexico.

Yours very truly.

Company: Marathon Oil Company

Representative: 

Title: District Operations Manager

Date: June 26, 1973

W A I V E R

New Mexico Oil Conservation Commission
P. O. Box 2088
Santa Fe, New Mexico 87501

Attention: Mr. A. L. Porter, Jr.

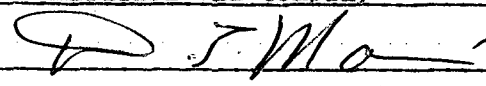
UNORTHODOX LOCATION
MOBIL OIL CORPORATION'S
MARSHALL COM, WELL #9
DRINKARD POOL
LEA COUNTY, NEW MEXICO

Gentlemen:

The undersigned has been advised by Mobil Oil Corporation that they have made application with the New Mexico Oil Conservation Commission to drill the subject well at an unorthodox location caused by topographic conditions on their lease. Please be advised that, as an offset operator to this lease I (we) have no objection to the drilling of this well at a location 840 ft from the north line and 1606 ft from the west line, Sec. 34, T-21-S, R-37-E, Lea County, New Mexico.

Yours very truly.

Company: Marathon Oil Company

Representative: 

Title: District Operations Manager

Date: June 26, 1973

