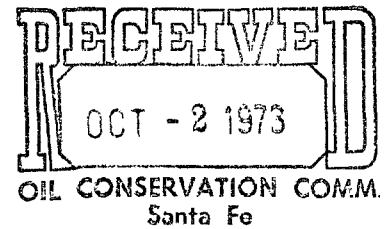


NEWMONT OIL COMPANY
ROOM 303, FIRST NATIONAL BANK BUILDING
P. O. BOX 1305
ARTESIA, NEW MEXICO 88210



September 28, 1973

NEW MEXICO
DISTRICT OFFICE

Mr. A. L. Porter, Jr.
Secretary-Director
State of New Mexico
Oil Conservation Commission
P. O. Box 2088
Santa Fe, New Mexico 87501

NSL - 622
Rec'd 17
R-4483
Re: Drill two unorthodox
producing wells, West Loco
Hills Grayburg No. 4 Sand
Unit, Loco Hills, Queen -
Grayburg - San Andres Field,
Eddy County, New Mexico

Dear Mr. Porter:

Newmont Oil Company (Operator of West Loco Hills Grayburg No. 4 Sand Unit) request administrative approval to drill the following two unorthodox locations:

1. 32A-8 (State lease) located 1560' FSL and 1480' FEL of Section 11, Township 18 South, Range 29 East, West Loco Hills Queen-Grayburg-San Andres Field, Eddy County, New Mexico.
2. 19A-2 (Federal lease) located 880' FSL & 1480' FEL of Section 9, Township 18 South, Range 29 East, West Loco Hills Queen-Grayburg-San Andres Field, Eddy County, New Mexico.

Administrative approval for infield unorthodox locations were granted under order No. R-4483 dated February 21, 1973.

Attached are applications for permit to drill, NMOCC Form C-101 for well 32A-8 and Federal Form 9-331C for well 19A-2. Also attached map showing the locations and NMOCC Forms C-102.

If additional information is required please call us collect at 746-9846. Thank you for your cooperation in the above matter.

Yours truly,

Charles C. Joy

Charles C. Joy
District Superintendent

CCJ/saf
Attachments

NO. OF COPIES RECEIVED	
DISTRIBUTION	
SANTA FE	
FILE	
U.S.G.S.	
LAND OFFICE	
OPERATOR	

NEW MEXICO OIL CONSERVATION COMMISSION

Form C-101
Revised 1-1-65

RECEIVED

OCT - 2 1973

4. Indicate Type of Lease

STATE ☒ FEE ☐

5. State Oil & Gas Lease No. B-6058-19

APPLICATION FOR PERMIT TO DRILL, DEEPEN, OR PLUG BACK

1a. Type of Work b. Type of Well OIL WELL <input checked="" type="checkbox"/> GAS WELL <input type="checkbox"/> OTHER <input type="checkbox"/> DRILL <input checked="" type="checkbox"/> DEEPEN <input type="checkbox"/> PLUG BACK <input type="checkbox"/> SINGLE ZONE <input checked="" type="checkbox"/> MULTIPLE ZONE <input type="checkbox"/>		7. Unit Agreement Name West Loco Hills G. #4 S 8. Farm or Lease Name Tract 32A 9. Well No. 8 10. Field and Pool, or Wildcat Loco Hills 12. County Eddy
2. Name of Operator Newmont Oil Company		
3. Address of Operator P. O. Box 1305, Artesia, New Mexico 88210		
4. Location of Well UNIT LETTER <u>J</u> LOCATED <u>1560'</u> FEET FROM THE <u>South</u> LINE AND <u>1480'</u> FEET FROM THE <u>East</u> LINE OF SEC. <u>11</u> TWP. <u>18S</u> RGE. <u>29E</u> NMPM		
21. Elevations (Show whether DF, RT, etc.) 3516'		19. Proposed Depth 2675'
21A. Kind & Status Plug. Bond Blanket		19A. Formation Grayburg
21B. Drilling Contractor Osbourn Drlg. Co.		20. Rotary or C.T. Rotary
22. Approx. Date Work will start Nov. 1, 1973		

23.

PROPOSED CASING AND CEMENT PROGRAM

SIZE OF HOLE	SIZE OF CASING	WEIGHT PER FOOT	SETTING DEPTH	SACKS OF CEMENT	EST. TOP
10-3/4"	8-5/8"	#24	425'	100 sacks	Surface
7-7/8"	5-1/2"	#17	2675'	Circ. or 500 s	

Drill infield well to recover oil that has not been recovered by wells No. 30-1 and 30-2 located in patterns formed by injection wells 11-10, 32A-6, 30-2, 13-9 and 35-2.

IN ABOVE SPACE DESCRIBE PROPOSED PROGRAM: IF PROPOSAL IS TO DEEPEN OR PLUG BACK, GIVE DATA ON PRESENT PRODUCTIVE ZONE AND PROPOSED NEW PRODUCTIVE ZONE. GIVE BLOWOUT PREVENTER PROGRAM, IF ANY.

I hereby certify that the information above is true and complete to the best of my knowledge and belief.

Signed Charles C. Joy Title District Superintendent Date 9/28/73
(This space for State Use)

APPROVED BY _____ TITLE _____ DATE _____
CONDITIONS OF APPROVAL, IF ANY:

NEW MEXICO OIL CONSERVATION COMMISSION
WELL LOCATION AND ACREAGE DEDICATION PLAT

Form C-102
Supersedes C-128
Effective 1-1-65

All distances must be from the outer boundaries of the Section.

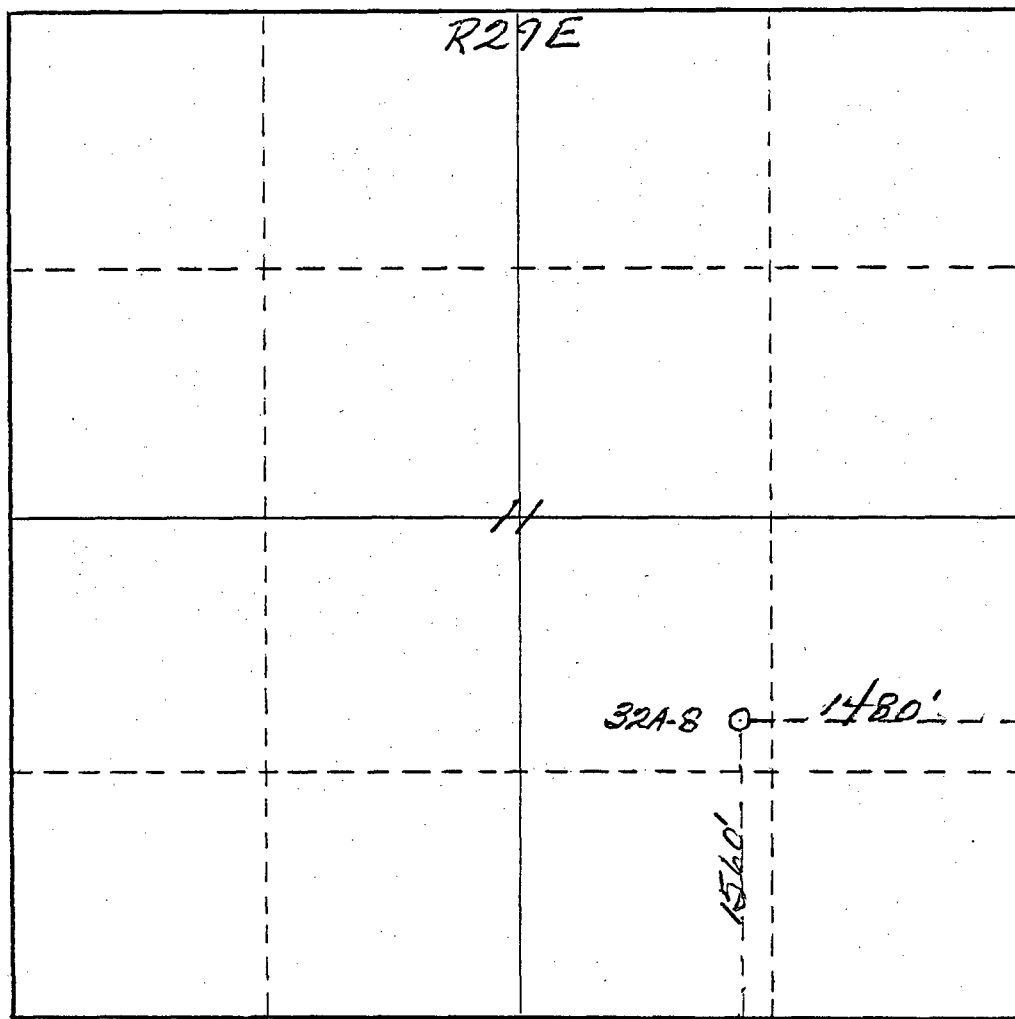
Operator <i>Newmont Oil Company</i>		Lease <i>West Loco Hills Grb #4 S, U.T. Tr. 32A</i>		Well No. <i>DE 8</i>	
Unit Letter <i>J</i>	Section <i>11</i>	Township <i>18 South</i>	Range <i>29 East</i>	County <i>Eddy</i>	
Actual Footage Location of Well: <i>1560</i> feet from the <i>South</i> line and <i>1480</i> feet from the <i>East</i> line					
Ground Level Elev. <i>3516</i>	Producing Formation <i>Loco Hills</i>	Pool <i>Loco Hills Queen Grb. S.A.</i>	Dedicated Acreage <i>40</i> Santa Fe		

1. Outline the acreage dedicated to the subject well by colored pencil or hachure marks on the plat below.
2. If more than one lease is dedicated to the well, outline each and identify the ownership thereof (both as to working interest and royalty).
3. If more than one lease of different ownership is dedicated to the well, have the interests of all owners been consolidated by communitization, unitization, force-pooling, etc?

☐ Yes ☐ No If answer is "yes," type of consolidation _____

If answer is "no," list the owners and tract descriptions which have actually been consolidated. (Use reverse side of this form if necessary.) _____

No allowable will be assigned to the well until all interests have been consolidated (by communitization, unitization, forced-pooling, or otherwise) or until a non-standard unit, eliminating such interests, has been approved by the Commission.



CERTIFICATION

I hereby certify that the information contained herein is true and complete to the best of my knowledge and belief.

James H. Brown
Name

Office Manager

Position

NEWMONT OIL COMPANY

Company

October 1, 1973

Date

I hereby certify that the well location shown on this plat was plotted from field notes of actual survey made by me or under my supervision and that the same is true and correct to the best of my knowledge and belief.

Date Surveyed

September 29th 1973

Registered Professional Engineer and/or Land Surveyor

James H. Brown
Certificate No. *542*

UNITED STATES
DEPARTMENT OF THE INTERIOR
GEOLOGICAL SURVEY

APPLICATION FOR PERMIT TO DRILL, DEEPEN, OR PLUG BACK

1a. TYPE OF WORK

DRILL ☒DEEPEN ☐PLUG BACK ☐

b. TYPE OF WELL

OIL
WELL ☒GAS
WELL ☐

OTHER

SINGLE
ZONE ☐MULTIPLE
ZONE ☐

2. NAME OF OPERATOR

NEWMONT OIL COMPANY

3. ADDRESS OF OPERATOR

P. O. BOX 1305, ARTESIA, NEW MEXICO 88210

4. LOCATION OF WELL (Report location clearly and in accordance with any State requirements.*)

At surface

880' FSL & 1480' FEL Section 9, T-18S, R-29E

At proposed prod. zone

14. DISTANCE IN MILES AND DIRECTION FROM NEAREST TOWN OR POST OFFICE*

15. DISTANCE FROM PROPOSED*

LOCATION TO NEAREST
PROPERTY OR LEASE LINE, FT.
(Also to nearest drlg. line, if any)

16. NO. OF ACRES IN LEASE

17. NO. OF ACRES ASSIGNED
TO THIS WELL18. DISTANCE FROM PROPOSED LOCATION*
TO NEAREST WELL, DRILLING, COMPLETED,
OR APPLIED FOR, ON THIS LEASE, FT.

19. PROPOSED DEPTH

2560'

20. ROTARY OR CABLE TOOLS

Rotary

21. ELEVATIONS (Show whether DF, RT, GR, etc.)

3489 G.L.

22. APPROX. DATE WORK WILL START*

23.

PROPOSED CASING AND CEMENTING PROGRAM

SIZE OF HOLE	SIZE OF CASING	WEIGHT PER FOOT	SETTING DEPTH	QUANTITY OF CEMENT
10 3/4"	8 5/8"	24#	300'	100 Sacks
7 7/8"	5 1/2"	17#	2560'	Circulation or 500 sacks

Drill unorthodox location in compliance with NMOCC Order No. R-4483 dated February 21, 1973. This infill well will recover oil that has not been recovered by wells 19A-1, 12-1 and 12-4 from patterns formed by injection wells 19B-4, 12-2, FWLHU 2-28 and FWLHU 10-15.

Fresh water from our system will be used to drill to approximately 2400' and fresh water mud from this point to T.D. Cuttings will be disposed of in pit.

NOTE-----Road plat, flowline plat and layout of rig and equipment attached.

IN ABOVE SPACE DESCRIBE PROPOSED PROGRAM: If proposal is to deepen or plug back, give data on present productive zone and proposed new productive zone. If proposal is to drill or deepen directionally, give pertinent data on subsurface locations and measured and true vertical depths. Give blowout preventer program, if any.

24.

SIGNED

Charles C Joy

TITLE

DISTRICT SUPERVISOR
OCT - 2 1973
CONSERVATION COM.
Superintendent

DATE

9/28/73

(This space for Federal or State office use)

PERMIT NO.

APPROVAL DATE

APPROVED BY

TITLE

DATE

CONDITIONS OF APPROVAL, IF ANY:

*See Instructions On Reverse Side

NEW MEXICO OIL CONSERVATION COMMISSION
WELL LOCATION AND ACREAGE DEDICATION PLAT

Form C-102
Supersedes C-128
Effective 1-1-65

All distances must be from the outer boundaries of the Section.

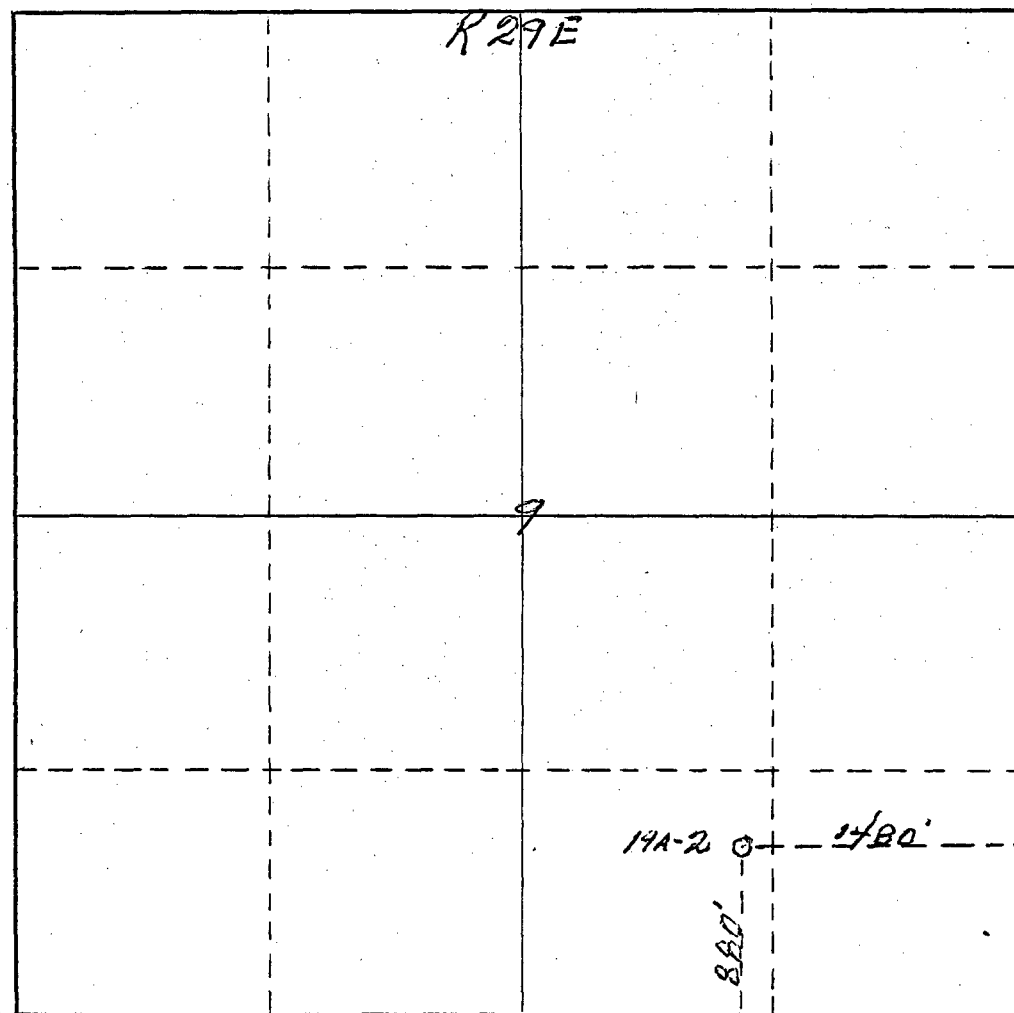
Operator <i>Newmont Oil Company</i>		Lease <i>West Loco Hills Grb #45, U.T. Tract 19A</i>			Well No. <i>2</i>
Unit Letter <i>0</i>	Section <i>9</i>	Township <i>18 South</i>	Range <i>29 East</i>	County <i>Eddy</i>	
Actual Footage Location of Well: <i>880</i> feet from the <i>South</i> line and <i>1480</i> feet from the <i>East</i> line					
Ground Level Elev: <i>3489</i>	Producing Formation <i>Loco Hills</i>		Pool <i>Loco Hills Queen Grb. S.A.</i>	Dedicated Acreage: <i>40</i> Acres	

1. Outline the acreage dedicated to the subject well by colored pencil or hatchure marks on the plat below.
2. If more than one lease is dedicated to the well, outline each and identify the ownership thereof (both as to working interest and royalty).
3. If more than one lease of different ownership is dedicated to the well, have the interests of all owners been consolidated by communitization, unitization, force-pooling, etc?

☐ Yes ☐ No If answer is "yes," type of consolidation _____

If answer is "no," list the owners and tract descriptions which have actually been consolidated. (Use reverse side of this form if necessary.) _____

No allowable will be assigned to the well until all interests have been consolidated (by communitization, unitization, forced-pooling, or otherwise) or until a non-standard unit, eliminating such interests, has been approved by the Commission.



CERTIFICATION

I hereby certify that the information contained herein is true and complete to the best of my knowledge and belief.

James F. McEnagill
Name
Office Manager

Position
NEWMONT OIL COMPANY

Company
October 1, 1973

Date

I hereby certify that the well location shown on this plat was plotted from field notes of actual surveys made by me or under my supervision, and that the same is true and correct to the best of my knowledge and belief.

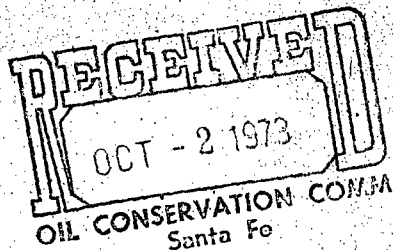
Date Surveyed *September 29th 1973*
Registered Professional Engineer
and/or Land Surveyor

James H. Brown
Certificate No. *542*

0 330 660 990 1320 1650 1980 2310 2640 2000 1500 1000 500 0

DEVELOPMENT PLAN FOR SURFACE USE

1. Existing Roads see Maps 1 & 2.
2. Planned access roads see Maps 1 & 2.
3. Location of Wells see Map 2.
4. Lateral roads to well locations see Map 2.
5. Location of tank battery and flowline see Map 2.
6. Location and type of water supply (fresh water from injection system at Injection Plant No. 2).
7. Methods of handling waste disposal. (solids to central tank battery pit, produced water to injection system, cuttings to pit, garbage and trash in land fill pit).
8. Location of camps (none).
9. Location of airstrip (none).
10. Location layout to include position of the rig, mud tanks, reserve pits, burn pits, pipe racks, etc., Sketch "A".
11. Plans for restoration of the surface as required by appropriate agency.
12. Any other information which the approving Official considers essential to his assessment of the impact on the environment will be furnished.
13. Blow out preventers. (Shaffer 10" Series 900 Type "B" B.O.P. with 4 1/2" pipe rams and blanks. Hydraulic operated 6,000# test, 3000# WOP, or equivalent.)



MAP #1

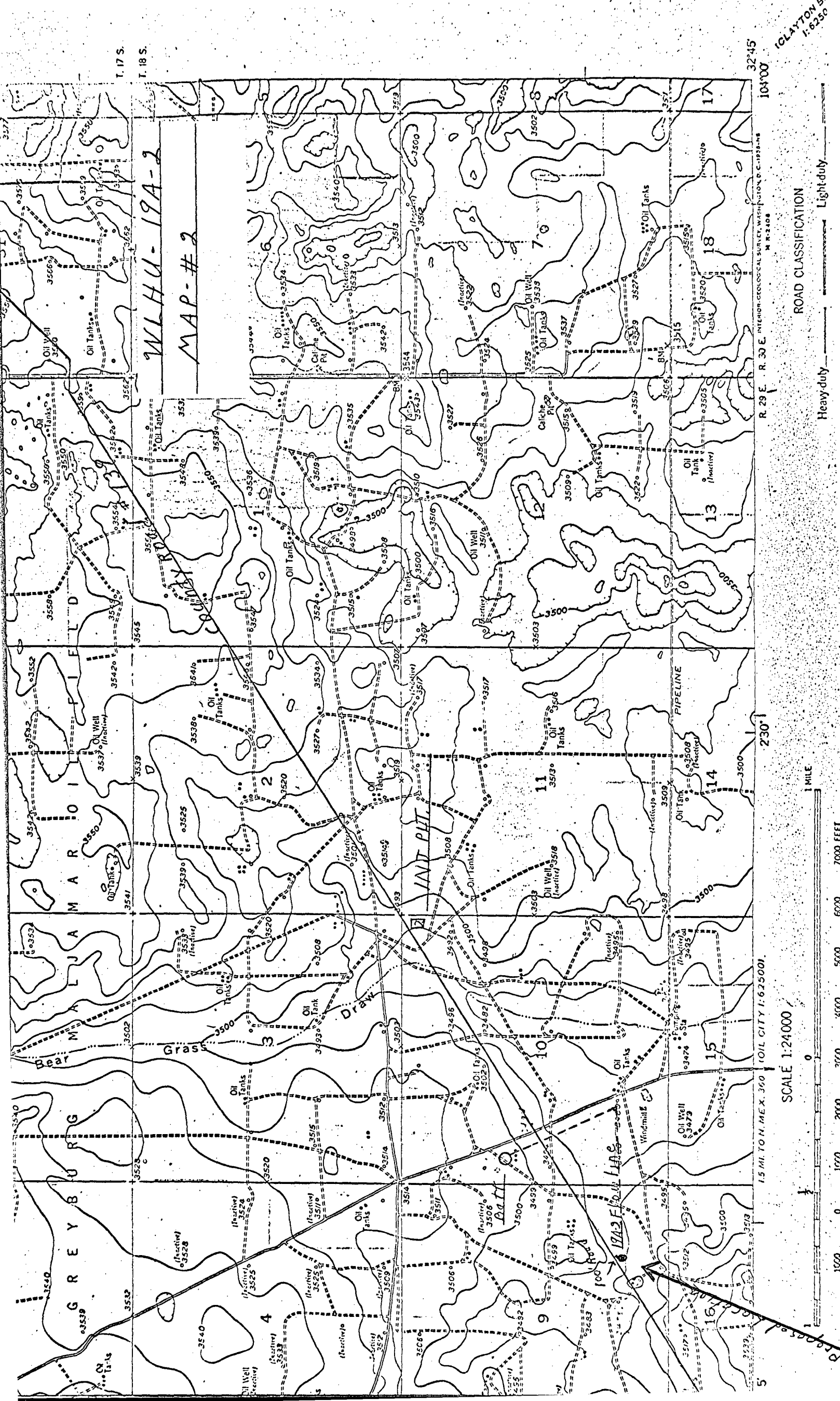
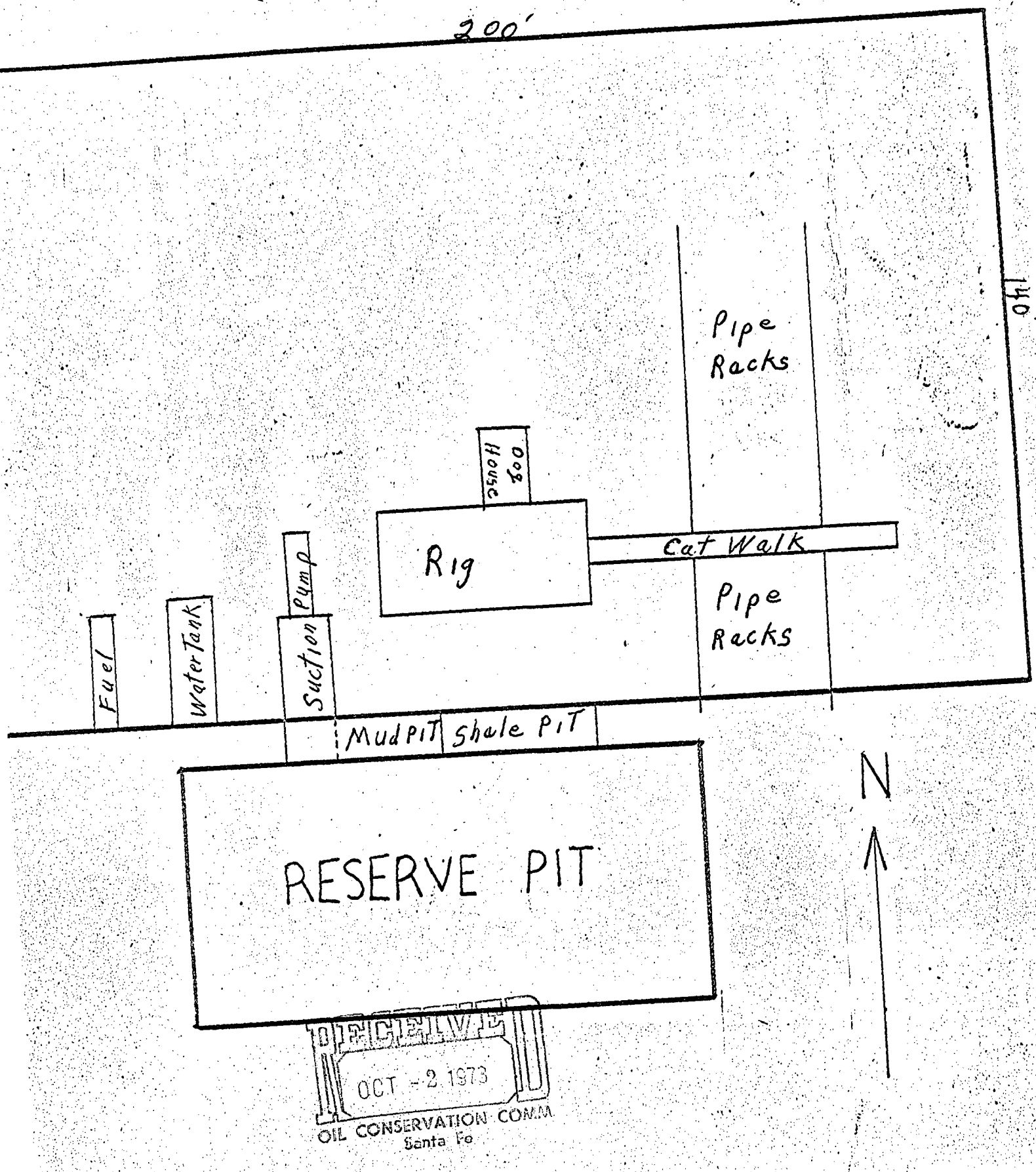
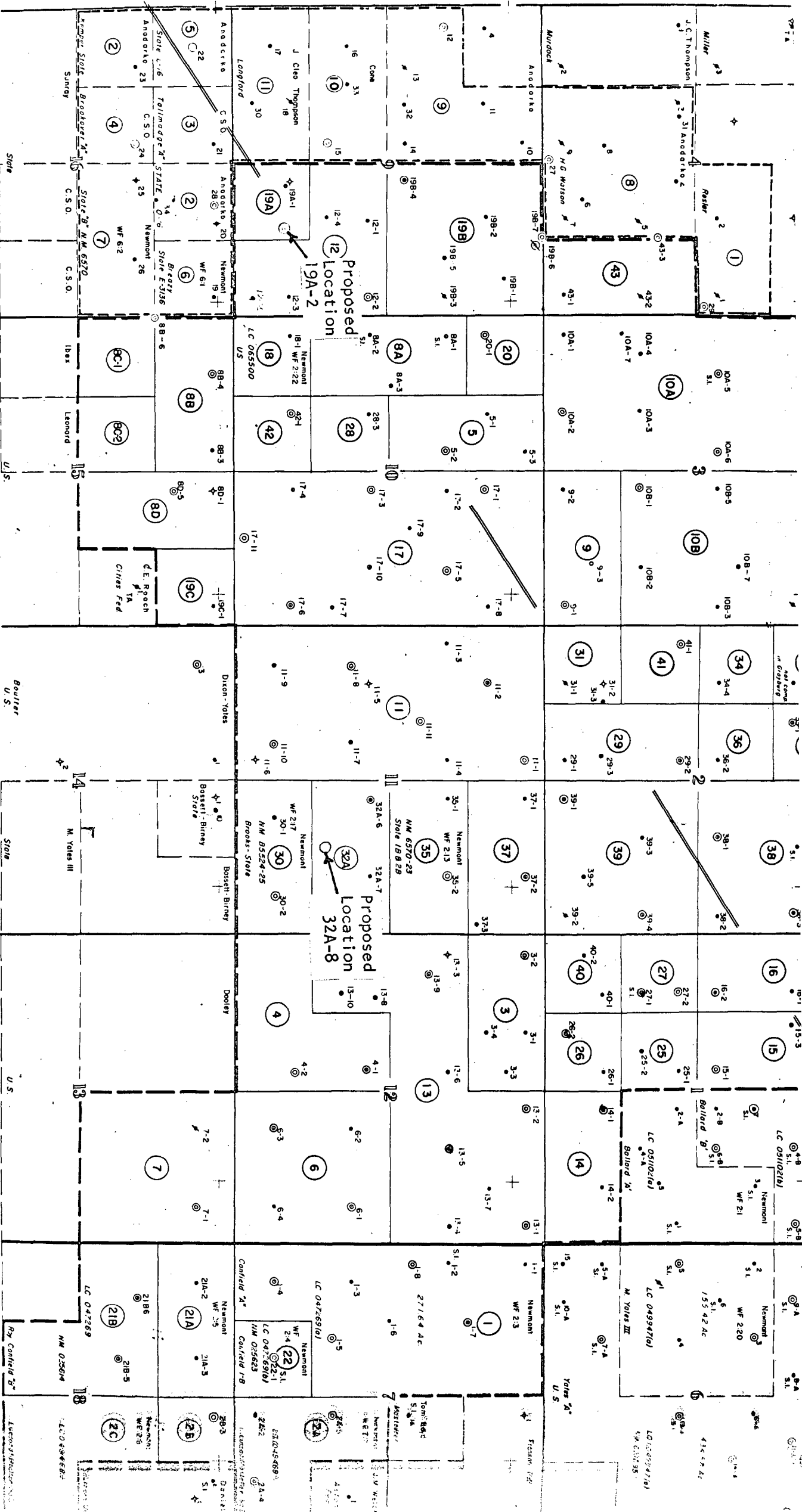


EXHIBIT "A"
West Loco Hills Unit
Mud pits & Rig Location
Well # 19A-2





Tract No.	Sec. No.	Lease No.	Well No.	Tract No.	Sec. No.	Lease No.	Well No.	Tract No.	Sec. No.	Lease No.	Well No.	Tract No.	Sec. No.	Lease No.	Well No.
12	9	LC 05994	1,2,3	5	10	LC 05453	1,2,3	11	11	LC 05681	1,2,3,4,5,6,7,8,9,10	3	12	LC 05049	1,2,3
19A	9	NM 02426	1,2,3,4	8A	15	B-5504-24	1,2	29	11	B-5504-25	1,2	4	12	LC 05049	1,2
19B	9	NM 02426	1,2,3,4	8B	15	B-5504-26	1,2	30	11	B-5504-27	1,2	6	12	LC 05049	1,2
43	4	Fee	1,2	8C	15	B-5504-28	1,2	31	11	B-5504-29	1,2	7	13	LC 05049	1,2
				8D	15	B-5504-21	1,2	32	11	B-5504-30	1,2	8	13	LC 05049	1,2
				8E	15	B-5504-19	1,2	33	11	B-5504-31	1,2	9	13	LC 05049	1,2
				8F	15	B-5504-20	1,2	34	11	B-5504-32	1,2	10	13	LC 05049	1,2
				8G	15	B-5504-22	1,2	35	11	B-5504-33	1,2	11	13	LC 05049	1,2
				8H	15	B-5504-23	1,2	36	11	B-5504-34	1,2	12	13	LC 05049	1,2
				8I	15	B-5504-25	1,2,3,4,5,6	37	11	B-5504-35	1,2,3,4	13	13	LC 05049	1,2,3,4,5
				8J	15	B-5504-27	1,2,3,4,5,6	38	11	B-5504-36	1,2,3,4,5	14	13	LC 05049	1,2,3,4,5
				8K	15	B-5504-28	1,2,3,4,5,6	39	11	B-5504-37	1,2,3,4,5	15	13	LC 05049	1,2,3,4,5
				8L	15	B-5504-29	1,2,3,4,5,6	40	11	B-5504-38	1,2,3,4,5	16	13	LC 05049	1,2,3,4,5
				8M	15	B-5504-30	1,2,3,4,5,6	41	11	B-5504-39	1,2,3,4,5	17	13	LC 05049	1,2,3,4,5,6,7,8,9
				8N	15	B-5504-31	1,2,3,4,5,6	42	11	B-5504-40	1,2,3,4,5	18	13	LC 05049	1,2,3,4,5,6,7,8,9
				8O	15	B-5504-32	1,2,3,4,5,6	43	11	B-5504-41	1,2,3,4,5	19C	15	NM 02426	1,2,3,4,5,6,7,8,9
				8P	15	B-5504-33	1,2,3,4,5,6	44	11	B-5504-42	1,2,3,4,5	20	15	NM 02426	1,2,3,4,5,6,7,8,9
				8Q	15	B-5504-34	1,2,3,4,5,6	45	11	B-5504-43	1,2,3,4,5	21	15	NM 02426	1,2,3,4,5,6,7,8,9
				8R	15	B-5504-35	1,2,3,4,5,6	46	11	B-5504-44	1,2,3,4,5	22	15	NM 02426	1,2,3,4,5,6,7,8,9
				8S	15	B-5504-36	1,2,3,4,5,6	47	11	B-5504-45	1,2,3,4,5	23	15	NM 02426	1,2,3,4,5,6,7,8,9
				8T	15	B-5504-37	1,2,3,4,5,6	48	11	B-5504-46	1,2,3,4,5	24	15	NM 02426	1,2,3,4,5,6,7,8,9
				8U	15	B-5504-38	1,2,3,4,5,6	49	11	B-5504-47	1,2,3,4,5	25	15	NM 02426	1,2,3,4,5,6,7,8,9
				8V	15	B-5504-39	1,2,3,4,5,6	50	11	B-5504-48	1,2,3,4,5	26	15	NM 02426	1,2,3,4,5,6,7,8,9
				8W	15	B-5504-40	1,2,3,4,5,6	51	11	B-5504-49	1,2,3,4,5	27	15	NM 02426	1,2,3,4,5,6,7,8,9
				8X	15	B-5504-41	1,2,3,4,5,6	52	11	B-5504-50	1,2,3,4,5	28	15	NM 02426	1,2,3,4,5,6,7,8,9
				8Y	15	B-5504-42	1,2,3,4,5,6	53	11	B-5504-51	1,2,3,4,5	29	15	NM 02426	1,2,3,4,5,6,7,8,9
				8Z	15	B-5504-43	1,2,3,4,5,6	54	11	B-5504-52	1,2,3,4,5	30	15	NM 02426	1,2,3,4,5,6,7,8,9
				8AA	15	B-5504-44	1,2,3,4,5,6	55	11	B-5504-53	1,2,3,4,5	31	15	NM 02426	1,2,3,4,5,6,7,8,9
				8AB	15	B-5504-45	1,2,3,4,5,6	56	11	B-5504-54	1,2,3,4,5	32	15	NM 02426	1,2,3,4,5,6,7,8,9
				8AC	15	B-5504-46	1,2,3,4,5,6	57	11	B-5504-55	1,2,3,4,5	33	15	NM 02426	1,2,3,4,5,6,7,8,9
				8AD	15	B-5504-47	1,2,3,4,5,6	58	11	B-5504-56	1,2,3,4,5	34	15	NM 02426	1,2,3,4,5,6,7,8,9
				8AE	15	B-5504-48	1,2,3,4,5,6	59	11	B-5504-57	1,2,3,4,5	35	15	NM 02426	1,2,3,4,5,6,7,8,9
				8AF	15	B-5504-49	1,2,3,4,5,6	60	11	B-5504-58	1,2,3,4,5	36	15	NM 02426	1,2,3,4,5,6,7,8,9
				8AG	15	B-5504-50	1,2,3,4,5,6	61	11	B-5504-59	1,2,3,4,5	37	15	NM 02426	1,2,3,4,5,6,7,8,9
				8AH	15	B-5504-51	1,2,3,4,5,6	62	11	B-5504-60	1,2,3,4,5	38	15	NM 02426	1,2,3,4,5,6,7,8,9
				8AI	15	B-5504-52	1,2,3,4,5,6	63	11	B-5504-61	1,2,3,4,5	39	15	NM 02426	1,2,3,4,5,6,7,8,9
				8AJ	15	B-5504-53	1,2,3,4,5,6	64	11	B-5504-62	1,2,3,4,5	40	15	NM 02426	1,2,3,4,5,6,7,8,9
				8AK	15	B-5504-54	1,2,3,4,5,6	65	11	B-5504-63	1,2,3,4,5	41	15	NM 02426	1,2,3,4,5,6,7,8,9
				8AL	15	B-5504-55	1,2,3,4,5,6	66	11	B-5504-64	1,2,3,4,5	42	15	NM 02426	1,2,3,4,5,6,7,8,9
				8AM	15	B-5504-56	1,2,3,4,5,6	67	11	B-5504-65	1,2,3,4,5	43	15	NM 02426	1,2,3,4,5,6,7,8,9
				8AN	15	B-5504-57	1,2,3,4,5,6	68	11	B-5504-66	1,2,3,4,5	44	15	NM 02426	1,2,3,4,5,6,7,8,9
				8AO	15	B-5504-58	1,2,3,4,5,6	69	11	B-5504-67	1,2,3,4,5	45	15	NM 02426	1,2,3,4,5,6,7,8,9
				8AP	15	B-5504-59	1,2,3,4,5,6	70	11	B-5504-68	1,2,3,4,5	46	15	NM 02426	1,2,3,4,5,6,7,8,9
				8AQ	15	B-5504-60	1,2,3,4,5,6	71	11	B-5504-69	1,2,3,4,5	47	15	NM 02426	1,2,3,4,5,6,7,8,9
				8AR	15	B-5504-61	1,2,3,4,5,6	72	11	B-5504-70	1,2,3,4,5	48	15	NM 02426	1,2,3,4,5,6,7,8,9
				8AS	15	B-5504-62	1,2,3,4,5,6	73	11	B-5504-71	1,2,3,4,5	49	15	NM 02426	1,2,3,4,5,6,7,8,9
				8AT	15	B-5504-63	1,2,3,4,5,6	74	11	B-5504-72	1,2,3,4,5	50	15	NM 02426	1,2,3,4,5,6,7,8,9
				8AU	15	B-5504-64	1,2,3,4,5,6	75	11	B-5504-73	1,2,3,4,5	51	15	NM 02426	1,2,3,4,5,6,7,8,9
				8AV	15	B-5504-65	1,2,3,4,5,6	76	11	B-5504-74	1,2,3,4,5	52	15	NM 02426	1,2,3,4,5,6,7,8,9
				8AW	15	B-5504-66	1,2,3,4,5,6	77	11	B-5504-75	1,2,3,4,5	53	15	NM 02426	1,2,3,4,5,6,7,8,9
				8AX	15	B-5504-67	1,2,3,4,5,6	78	11	B-5504-76	1,2,3,4,5	54	15	NM 02426	1,2,3,4,5,6,7,8,9
				8AY	15	B-5504-68	1,2,3,4,5,6	79	11	B-5504-77	1,2,3,4,5	55	15	NM 02426	1,2,3,4,5,6,7,8,9
				8AZ	15	B-5504-69	1,2,3,4,5,6	80	11	B-5504-78	1,2,3,4,5	56	15	NM 02426	1,2,3,4,5,6,7,8,9
				8BA	15	B-5504-70	1,2,3,4,5,6	81	11	B-5504-79	1,2,3,4,5	57	15	NM 02426	1,2,3,4,5,6,7,8,9
				8BB	15	B-5504-71	1,2,3,4,5,6	82	11	B-5504-80	1,2,3,4,5	58	15	NM 02426	1,2,3,4,5,6,7,8,9
				8BC	15	B-5504-72	1,2,3,4,5,6	83	11	B-5504-81	1,2,3,4,5	59	15	NM 02426	1,2,3,4,5,6,7,8,9
				8BD	15	B-5504-73	1,2,3,4,5,6	84	11	B-5504-82	1,2,3,4,5	60	15	NM 02426	1,2,3,4,5,6,7,8,9
				8BE	15	B-5504-74	1,2,3,4,5,6	85	11	B-5504-83	1,2,3,4,5	61	15	NM 02426	1,2,3,4,5,6,7,8,9
				8BF	15	B-5504-75	1,2,3,4,5,6	86	11	B-5504-84	1,2,3,4,5	62	15	NM 02426	1,2,3,4,5,6,7,8,9
				8BG	15	B-5504-76	1,2,3,4,5,6	87	11	B-5504-85	1,2,3,4,5	63	15	NM 02426	1,2,3,4,5,6,7,8,9
				8BH	15	B-5504-77	1,2,3,4,5,6	88	11	B-5504-86	1,2,3,4,5	64	15	NM 02426	1,2,3,4,5,6,7,8,9
				8BI	15	B-5504-78	1,2,3,4,5,6	89	11	B-5504-87	1,2,3,4,5	65	15	NM 02426	1,2,3,4,5,6,7,8,9
				8BJ	15	B-5504-79	1,2,3,4,5,6	90	11	B-5504-88	1,2,3,4,5	66	15	NM 02426	1,2,3,4,5,6,7,8,9
				8BK	15	B-5504-80	1,2,3,4,5,6	91	11	B-5504-89	1,2,3,4,5	67	15	NM 02426	1,2,3,4,5,6,7,8,9
				8BL	15	B-5504-81	1,2,3,4,5,6	92	11	B-5504-90	1,2,3,4,5	68	15	NM 02426	1,2,3,4,5,6,7,8,9
				8BM	15	B-5504-82	1,2,3,4,5,6	93	11	B-5504-91	1,2,3,4,5	69	15	NM 02426	1,2,3,4,5,6,7,8,9
				8BN	15	B-5504-83	1,2,3,4,5,6	94	11	B-5504-92	1,2,3,4,5	70	15	NM 02426	1,2,3,4,5,6,7,8,9
				8BO	15	B-5504-84	1,2,3,4,5,6	95	11	B-5504-93	1,2,3,4,5	71	15	NM 02426	1,2,3,4,5,6,7,8,9
				8BP	15	B-5504-85	1,2,3,4,5,6	96	11	B-5504-94	1,2,3,4,5	72	15	NM 02426	1,2,3,4,5,6,7,8,9
				8BQ	15	B-5504-86	1,2,3,4,5,6	97	11	B-5504-95	1,2,3,4,5	73	15	NM 02426	1,2,3,4,5,6,7,8,9
				8BR	15	B-5504-87	1,2,3,4,5,6	98	11	B-5504-96	1,2,3,4,5	74	15	NM 02426	1,2,3,4,5,6,7,8,9
				8BS	15	B-5504-88	1,2,3,4,5,6	99	11	B-5504-97	1,2,3,4,5	75	15	NM 02426	1,2,3,4,5,6,7,8,9
				8BT	15	B-5504-89	1,2,3,4,5,6	100	11	B-5504-98	1,2,3,4,5	76	15	NM 02426	1,2,3,4,5,6,7,8,9
				8BU	15	B-5504-90	1,2,3,4,5,6	101	11	B-5504-99	1,2,3,4,5	77	15	NM 02426	1,2,3,4,5,6,7,8,9
				8BV	15	B-5504-91	1,2,3,4,5,6	102	11	B-5504-100	1,2,3,4,5	78	15	NM 02426	1,2,3,4,5,6,7,8,9
				8BW	15	B-5504-92	1,2,3,4,5,6	103	11	B-5504-101	1,2,3,4,5	79	15	NM 02426	1,2,3,4,5,6,7,8,9
				8BX	15	B-5504-93	1,2,3,4,5,6	104	11	B-5504-102	1,2,3,4,5	80	15	NM 02426	1,2,3,4,5,6,7,8,9
				8BY	15	B-5504-94	1,2,3,4,5,6	105	11	B-5504-103	1,2,3,4,5	81	15	NM 02426	1,2,3,4,5,6,7,8,9
				8BZ	15	B-5504-95	1,2,3,4,5,6	106	11	B-5504-1					

UNITED STATES
DEPARTMENT OF THE INTERIOR
GEOLOGICAL SURVEY

APPLICATION FOR PERMIT TO DRILL, DEEPEN, OR PLUG BACK

1a. TYPE OF WORK

DRILL ☒DEEPEN ☐PLUG BACK ☐

b. TYPE OF WELL

OIL
WELL ☒GAS
WELL ☐

OTHER

SINGLE
ZONE ☐MULTIPLE
ZONE ☐

2. NAME OF OPERATOR

NEWMONT OIL COMPANY

3. ADDRESS OF OPERATOR

P. O. BOX 1305, ARTESIA, NEW MEXICO 88210

4. LOCATION OF WELL (Report location clearly and in accordance with any State requirements.)*

At surface

880' FSL & 1480' FEL Section 9, T-18S, R-29E

At proposed prod. zone

14. DISTANCE IN MILES AND DIRECTION FROM NEAREST TOWN OR POST OFFICE*

15. DISTANCE FROM PROPOSED*

LOCATION TO NEAREST
PROPERTY OR LEASE LINE, FT.
(Also to nearest drlg. line, if any)18. DISTANCE FROM PROPOSED LOCATION*
TO NEAREST WELL, DRILLING, COMPLETED,
OR APPLIED FOR, ON THIS LEASE, FT.

16. NO. OF ACRES IN LEASE

19. PROPOSED DEPTH

2560'

17. NO. OF ACRES ASSIGNED
TO THIS WELL

40

20. ROTARY OR CABLE TOOLS

Rotary

21. ELEVATIONS (Show whether DF, RT, GR, etc.)

3489 G.L.

22. APPROX. DATE WORK WILL START*

23.

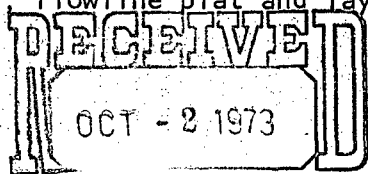
PROPOSED CASING AND CEMENTING PROGRAM

SIZE OF HOLE	SIZE OF CASING	WEIGHT PER FOOT	SETTING DEPTH	QUANTITY OF CEMENT
10 3/4"	8 5/8"	24#	300'	100 Sacks
7 7/8"	5 1/2"	17#	2560'	Circulation or 500 sacks

Drill unorthodox location in compliance with NMOCC Order No. R-4483 dated February 21, 1973. This infill well will recover oil that has not been recovered by wells 19A-1, 12-1 and 12-4 from patterns formed by injection wells 19B-4, 12-2, FWLHU 2-28 and FWLHU 10-15.

Fresh water from our system will be used to drill to approximately 2400' and fresh water mud from this point to T.D. Cuttings will be disposed of in pit.

NOTE-----Road plat, flowline plat and layout of rig and equipment attached.



IN ABOVE SPACE DESCRIBE PROPOSED PROGRAM. If drilling or deepening or plug back, give data on present productive zone and proposed new productive zone. If proposal is to drill or deepen directionally, give pertinent data on subsurface locations and measured and true vertical depths. Give blowout preventer program, if any.

24.

SIGNED

Charles C Joy

TITLE

District Superintendent

DATE

9/28/73

(This space for Federal or State office use)

PERMIT NO.

APPROVAL DATE

APPROVED BY

TITLE

DATE

CONDITIONS OF APPROVAL, IF ANY:

*See Instructions On Reverse Side

NEW MEXICO OIL CONSERVATION COMMISSION
WELL LOCATION AND ACREAGE DEDICATION PLAT

Form C-102
Supersedes C-128
Effective 1-1-65

All distances must be from the outer boundaries of the Section.

Operator <i>Newmont Oil Company</i>		Lease <i>West Loco Hills Grb #45.4T. Tract 19A</i>		Well No. <i>2</i>
Unit Letter <i>0</i>	Section <i>9</i>	Township <i>18 South</i>	Range <i>29 East</i>	County <i>Eddy</i>
Actual Footage Location of Well: <i>880</i> feet from the <i>South</i> line and <i>1780</i> feet from the <i>East</i> line				
Ground Level Elev. <i>3489</i>	Producing Formation <i>Loco Hills</i>	Pool <i>Loco Hills Queen Grb. S.A.</i>	Dedicated Acreage: <i>40</i> Acres	

1. Outline the acreage dedicated to the subject well by colored pencil or hachure marks on the plat below.
2. If more than one lease is dedicated to the well, outline each and identify the ownership thereof (both as to working interest and royalty).
3. If more than one lease of different ownership is dedicated to the well, have the interests of all owners been consolidated by communitization, unitization, force-pooling, etc?

☐ Yes ☐ No If answer is "yes," type of consolidation _____

If answer is "no," list the owners and tract descriptions which have actually been consolidated. (Use reverse side of this form if necessary.) _____

No allowable will be assigned to the well until all interests have been consolidated (by communitization, unitization, forced-pooling, or otherwise) or until a non-standard unit, eliminating such interests, has been approved by the Commission.

R 29 E

9

17A-2 *1780'*

880'

CERTIFICATION

I hereby certify that the information contained herein is true and complete to the best of my knowledge and belief.

Robert J. McLaughlin
Name

Office Manager

Position

NEWMONT OIL COMPANY

Company

October 1, 1973

Date

I hereby certify that the well location shown on this plat was plotted from field notes of actual surveys made by me or under my supervision and that the same is true and correct to the best of my knowledge and belief.

Date Surveyed

H. BROWN

September 27th 1973

Registered Professional Engineer and/or Land Surveyor

James H. Brown
Certificate No. *542*

