

L. P. Thompson  
Division Manager  
Production Department  
Hobbs Division  
Western Hemisphere Petroleum Division

Continental Oil Company  
P.O. Box 460  
1001 North Turner  
Hobbs, New Mexico 88240  
(505) 393-4141

NEW MEXICO OIL CONSERVATION COMM.  
Santa Fe

January 23, 1976

New Mexico Oil Conservation Commission(3)  
P. O. Box 2088  
Santa Fe, New Mexico 87501

Attention Mr. J. D. Ramey  
Secretary-Director

Gentlemen:

Continental Oil Company, as operator of the MCA Unit, hereby respectfully requests permission to re-enter and complete as a Maljamar Grayburg San-Andres producer its Pearl B No. 27 Well, located 1295' FSL and 1245' FEL of Section 25, T-17S, R-32E, Lea County, New Mexico. This well was originally drilled by Kewanee Oil Company in 1949, in conjunction with the gas re-pressuring program which was in effect at that time. The well was found to be water-productive in the zones of interest and the well was plugged and abandoned with all pipe left in place.

It is proposed to re-enter this well, to be redesignated MCA Unit No. 356, stimulate the well in the open-hole interval 4220 to 4330, test and place on production.

The attached plat shows that this well is located 75' from the nearest boundary of the MCA participating area. The offset operator is Continental Oil Company, the lands of which are a part of the same basic lease on which the well was originally drilled and is within the MCA Unit area.

It is respectfully requested that immediate approval be given this application for non-standard location under the authority of Order No. R-2403, as amended, and the original authorization for the drilling of this well.

Yours very truly,

VTL:reh

Enc

CC:

New Mexico Oil Conservation Commission  
P. O. Box 1980  
Hobbs, New Mexico 88240

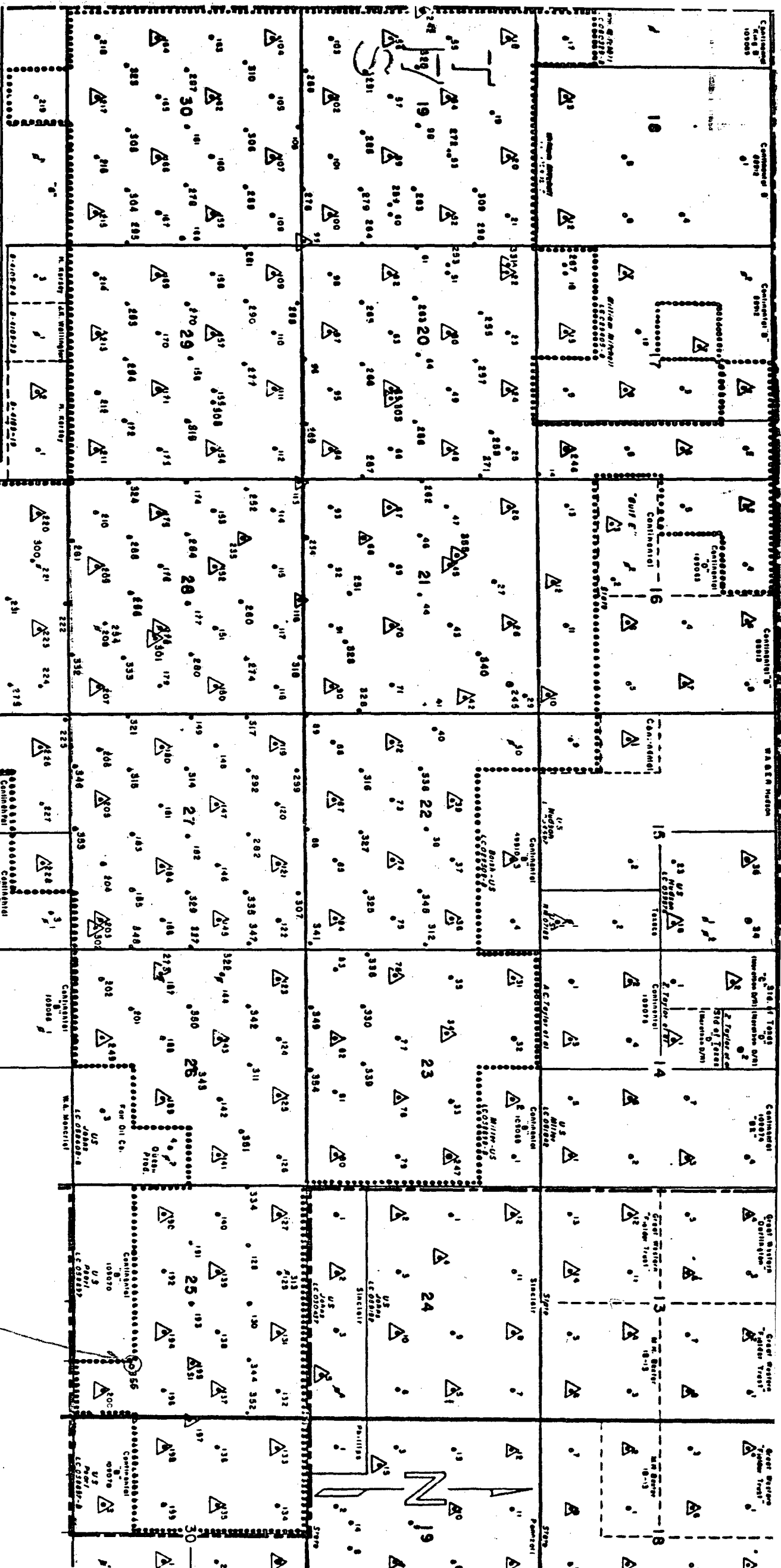
United States Geological Survey  
P. O. Box 1157  
Hobbs, New Mexico 88240

CFE: FOH: JWK

NSL-752

R-2403-A

See upon receipt of  
approval from HCH



**CONOCO**

PRODUCTION DEPARTMENT  
HOBBBS DIVISION

LEA COUNTY, NEW MEXICO

MCA UNIT Boundary

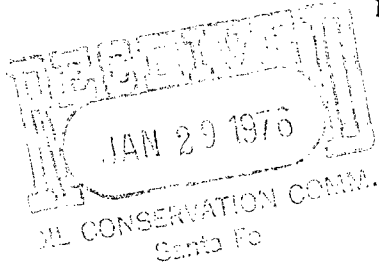
Scale 1 inch = 1 mile  
0 1000 2000

OIL CONSERVATION COMMISSION  
Hobbs DISTRICT

OIL CONSERVATION COMMISSION  
BOX 2088  
SANTA FE, NEW MEXICO

DATE January 27, 1976

RE: Proposed MC \_\_\_\_\_  
Proposed DHC \_\_\_\_\_  
Proposed NSL X \_\_\_\_\_  
Proposed SWD \_\_\_\_\_  
Proposed WFX \_\_\_\_\_  
Proposed PMX \_\_\_\_\_



Gentlemen:

I have examined the application dated MC Unit Well No. 356  
for the Continental Oil Co. Pearl B #27 25-17-32  
Operator Lease and Well No. Unit, S-T-R

and my recommendations are as follows:

O.K.---J.S.

Yours very truly,

Jerry Sexton