



TransOcean Oil, Inc.

1700 FIRST CITY EAST BUILDING
1111 FANNIN • HOUSTON, TEXAS 77002
713 - 654-2100

January 3, 1977

NSL-820

104 F

No waiting

no offsetting operators

New Mexico Oil Conservation Commission
Post Office Box 2088
Santa Fe, New Mexico 87501

Attn: J. E. Kapteina

Re: TransOcean Oil, Inc.
Turner SFPRR No. 1
Section 21, T3N, R9W
Catron Co., New Mexico

Dear Sir:

We respectfully request an exception to a normal standard location to a non-standard location of 1571.5 FWL & 1559.7 FNL of Section 21, T3N-R9W, due to local topographic conditions, on the above-captioned well. We further ask the Secretary-Director to grant administration approval to the requested non-standard location under Rule 104 - Section F.

Enclosed is a plat of the topography in Section 21 and the immediate area taken from the U.S.G.S. "Pasture Canyon" topographic map. On the plat is plotted the proposed non-standard location which has been surveyed by a licensed surveyor. This location falls southwest of a cliff face that precludes standard locations to the north and east. The rubble and block boulders preclude standard locations to the south and west of the proposed location.

In summary, the presence of the steep cliff face, large block boulders, and the amount of cut and fill make the standard locations undesirable. The non-standard location is located on a sloping terrace at the base of the steep cliff and presents no drainage problems.

The area has been inspected and approved by Mr. Carl Ulvog of your Santa Fe Office.

Enclosed is a lease ownership map of the subject acreage and offsetting

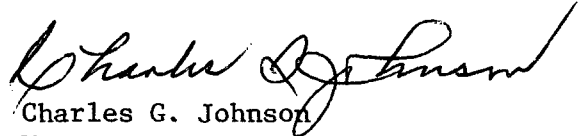
J. E. KAPTEINA
JANUARY 3, 1977
PAGE 2

acreage. TransOcean Oil, Incorporated owns leases on all of the offsetting acreage.

Thank you for your consideration.

Sincerely,

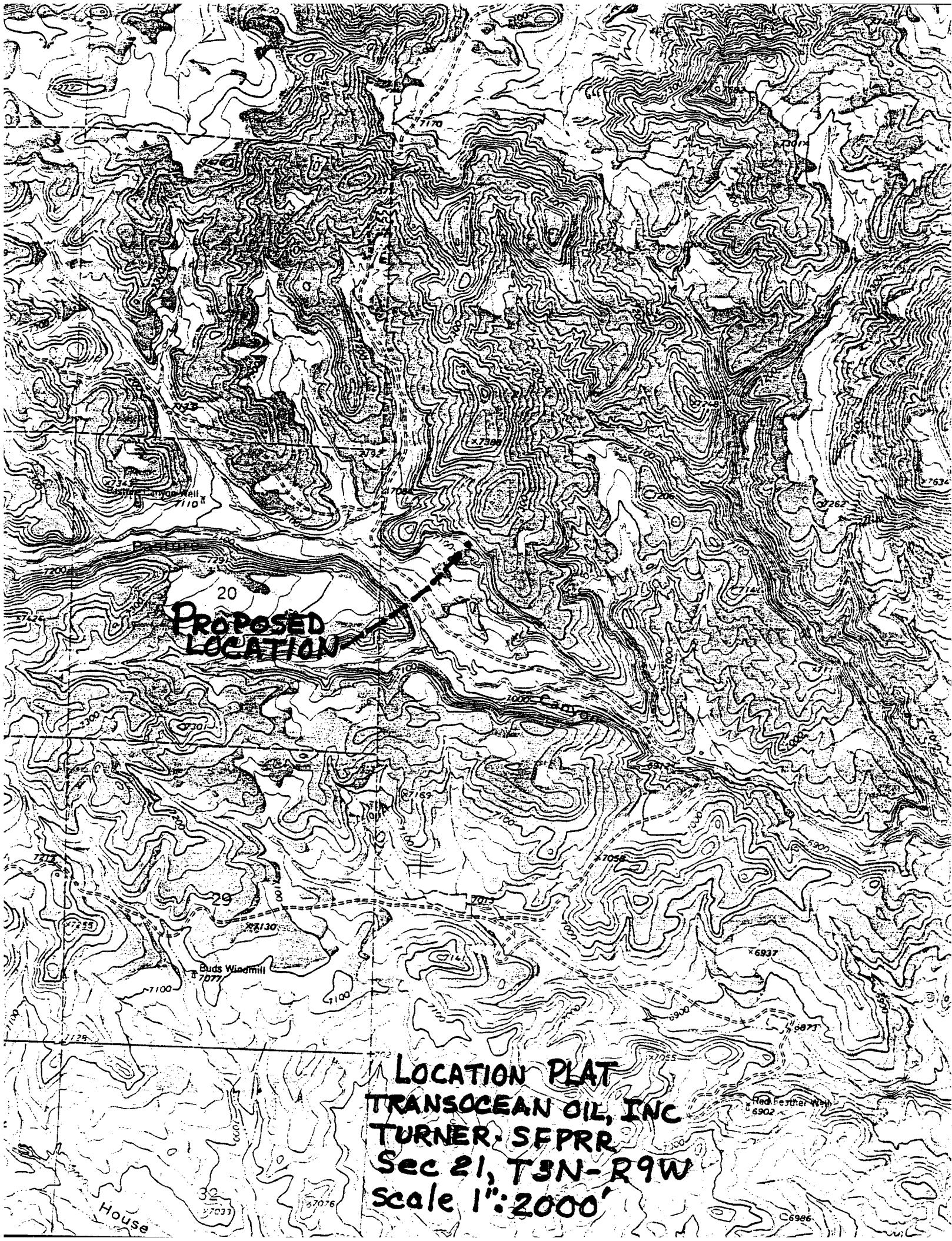
TRANSOCEAN OIL, INC.

A handwritten signature in cursive script, appearing to read "Charles G. Johnson".

Charles G. Johnson
Manager
Western Exploration Division

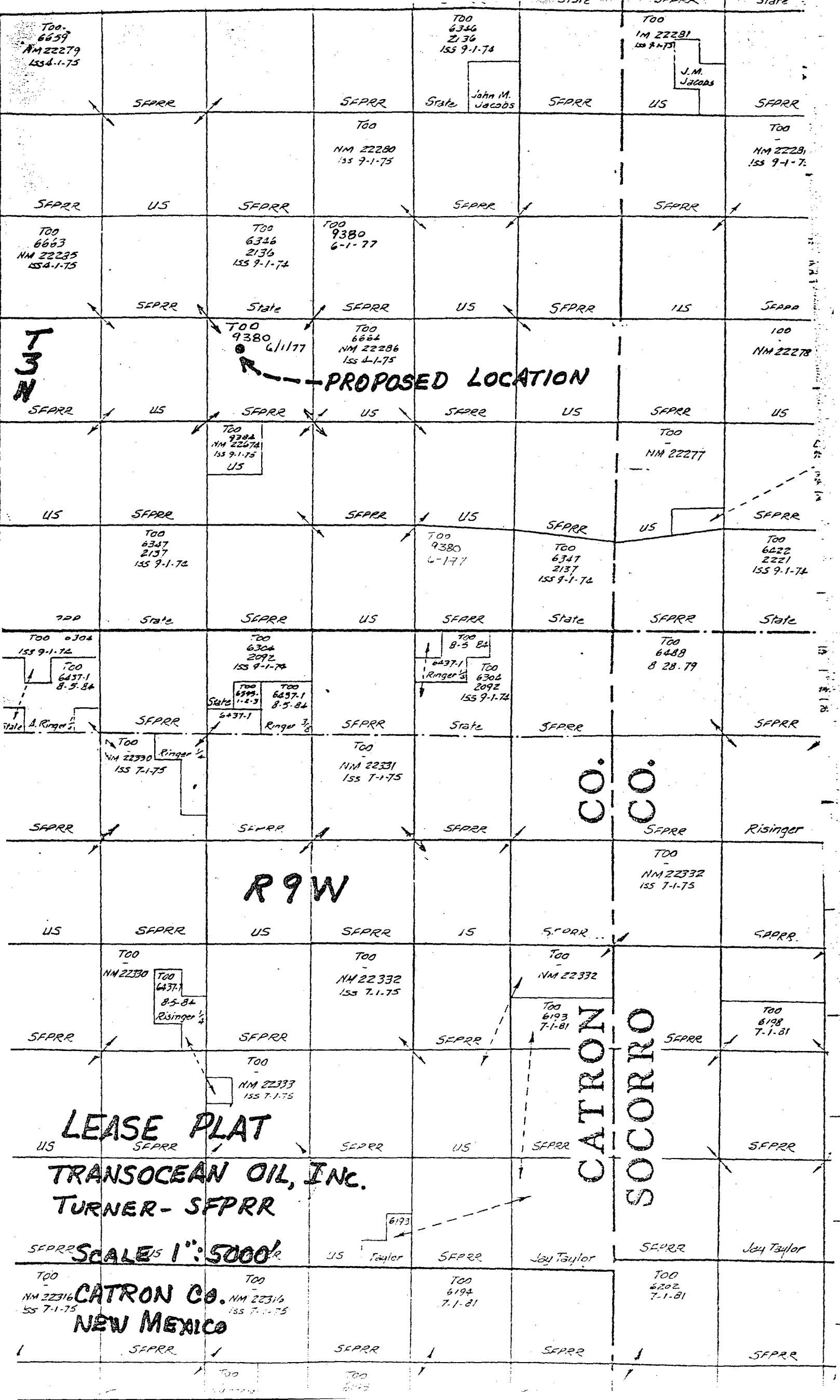
CGJ/dlk

Enclosures



Proposed Location

LOCATION PLAT
TRANSOCEAN OIL, INC
TURNER SEPRR
Sec 21, T3N-R9W
Scale 1":2000'



TOO-
6659
NM 22279
ISS 4-1-75

TOO
6346
2136
ISS 9-1-74

TOO
NM 22281
ISS 9-1-75

J.M.
Jacobs

John M.
Jacobs

TOO
NM 22280
ISS 9-1-75

TOO
NM 22281
ISS 9-1-75

TOO
6663
NM 22235
ISS 4-1-75

TOO
6346
2136
ISS 9-1-74

TOO
9380
6-1-77

TOO
9380
6-1-77

TOO
6664
NM 22286
ISS 4-1-75

TOO
NM 22278

TOO
9384
NM 22674
ISS 9-1-75
US

TOO
NM 22277

TOO
6347
2137
ISS 9-1-74

TOO
9380
6-1-77

TOO
6347
2137
ISS 9-1-74

TOO
6222
2221
ISS 9-1-74

TOO 6304
ISS 9-1-74
TOO 6437-1
8-5-84

TOO
6304
2092
ISS 9-1-74

TOO 8-5-84
TOO 6437-1
Risinger
TOO 6304
2092
ISS 9-1-74

TOO
6488
8-28-79

TOO 6437-1
1-1-83
TOO 6437-1
8-5-84
Risinger

TOO
NM 22330
ISS 7-1-75
Risinger

TOO
NM 22331
ISS 7-1-75

CO.
CO.

TOO
NM 22332
ISS 7-1-75

R9W

TOO
NM 22330
TOO 6437-1
8-5-84
Risinger

TOO
NM 22332
ISS 7-1-75

TOO
NM 22332

TOO
6193
7-1-81

TOO
6198
7-1-81

TOO
NM 22333
ISS 7-1-75

CATRON
SOCORRO

LEASE PLAT

TRANSOCEAN OIL, INC.
TURNER - SFPRR

SCALE 1" = 5000'

CATRON CO.
NEW MEXICO

TOO
NM 22316
ISS 7-1-75

TOO
NM 22316
ISS 7-1-75

TOO
6194
7-1-81

TOO
6202
7-1-81

6193
Taylor

Jay Taylor

Jay Taylor