

NSL-931

**BLACKWOOD & NICHOLS Co., LTD.**

P. O. BOX 1237  
DURANGO, COLORADO 81301

(303) 247-0728

March 2, 1978

NSL 104 F  
Rule 104 F  
Kendrick  
3-26-78  
approval only needed  
MAR 6 1978

Mr. Joe D. Ramey, Secretary-Director  
New Mexico Oil Conservation Commission  
P. O. Box 2088  
Santa Fe, New Mexico 87501

Re: Application for non-standard  
location, Northeast Blanco  
Unit Well No. 66

Dear Mr. Ramey:

As operator of the Northeast Blanco Unit, we are requesting administrative approval for an unorthodox well location to be completed in the Mesaverde Formation.

We intend to drill the Northeast Blanco Unit Well No. 66, an infill well, located 1990' F/N - 490' F/W, F-30-31N-7W, San Juan County, New Mexico.

Blanco  
mesaverde

The offset spacing unit subject application are all within the bounds of the Northeast Blanco Unit and should not present a drainage problem to any offset operator to the unit. The proration unit dedicated to well No. 66 was approved by Case No. 1006; Order No. 750-A.

Due to extreme topographical conditions, we believe we have surveyed this well site in the only logical location.

Yours very truly,

BLACKWOOD & NICHOLS CO., LTD.

  
DeLasso Loos  
District Manager

DL:lr  
Enclosure

cc: A. R. Kendricks  
New Mexico Oil Conservation Commission  
Aztec, New Mexico 87410

**NEW MEXICO OIL CONSERVATION COMMISSION  
WELL LOCATION AND ACREAGE DEDICATION PLAT**

Form C-102  
Supersedes C-128  
Effective 1-1-65

All distances must be from the outer boundaries of the Section.

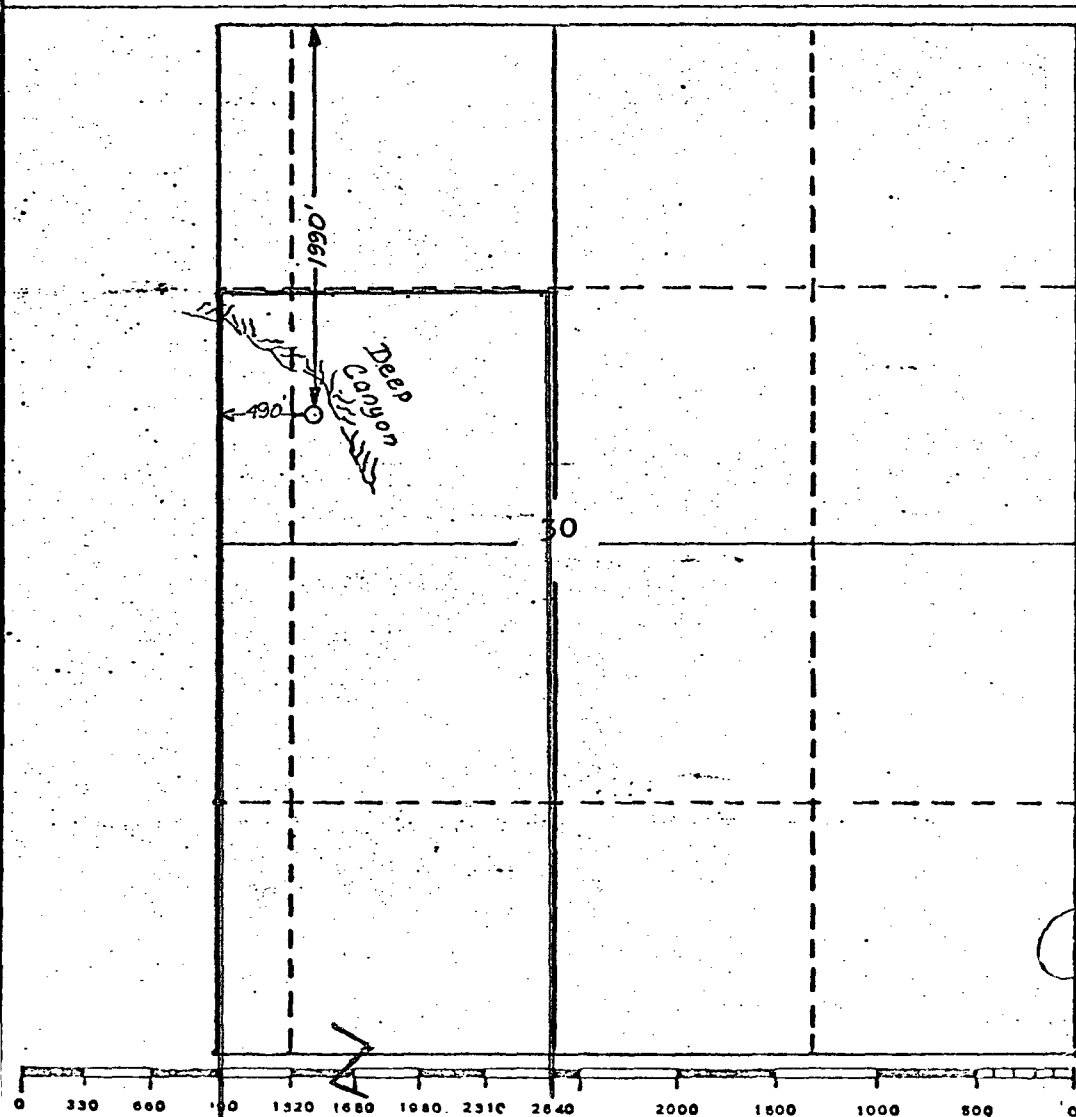
Operator <b>BLACKWOOD &amp; NICHOLS</b>			Lease <b>NORTHEAST BLANCO UNIT</b>		Well No. <b>66</b>
Unit Letter <b>F</b>	Section <b>30</b>	Township <b>31 N.</b>	Range <b>7W., N.M.P.M.</b>	County <b>SAN JUAN</b>	
Actual Footage Location of Wells: <div style="display: flex; justify-content: space-between; align-items: center;"> <span>1990 feet from the</span> <span><b>north</b> line and</span> <span>490 feet from the</span> <span><b>west</b> line</span> </div>					
Ground Level Elev: <b>6280 UG</b>		Producing Formation <b>Mesaverde</b>		Pool <b>Blanco-Mesaverde</b>	Dedicated Acreage: <b>250.65</b> Acres

1. Outline the acreage dedicated to the subject well by colored pencil or hachure marks on the plat below.
2. If more than one lease is dedicated to the well, outline each and identify the ownership thereof (both as to working interest and royalty).
3. If more than one lease of different ownership is dedicated to the well, have the interests of all owners been consolidated by communitization, unitization, force-pooling, etc?

☐ Yes   ☐ No   If answer is "yes," type of consolidation \_\_\_\_\_

If answer is "no," list the owners and tract descriptions which have actually been consolidated. (Use reverse side of this form if necessary.) \_\_\_\_\_

No allowable will be assigned to the well until all interests have been consolidated (by communitization, unitization, forced-pooling, or otherwise) or until a non-standard unit, eliminating such interests, has been approved by the Commission.



**CERTIFICATION**

I hereby certify that the information contained herein is true and complete to the best of my knowledge and belief.

Name \_\_\_\_\_

Position \_\_\_\_\_

Company \_\_\_\_\_

Date \_\_\_\_\_

I hereby certify that the well location shown on this plat was plotted from field notes of actual surveys made by me or under my supervision, and that the same is true and correct to the best of my knowledge and belief.

December 8, 1977

Date Surveyed \_\_\_\_\_

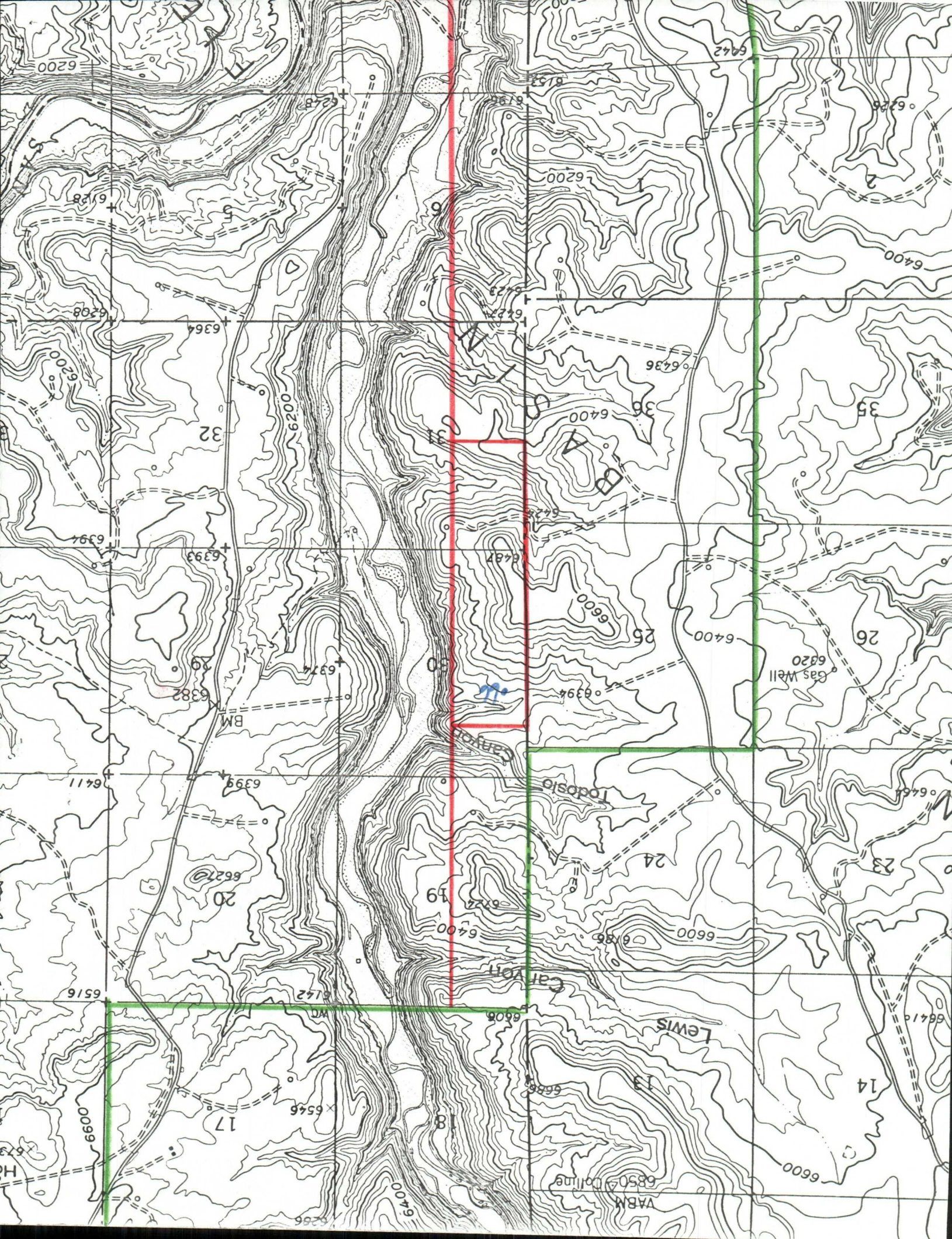
Registered Professional Engineer  
and/or Land Surveyor

**John A. Kroeger, L.S.**

Cert. No. 1941

Certificate No. \_\_\_\_\_







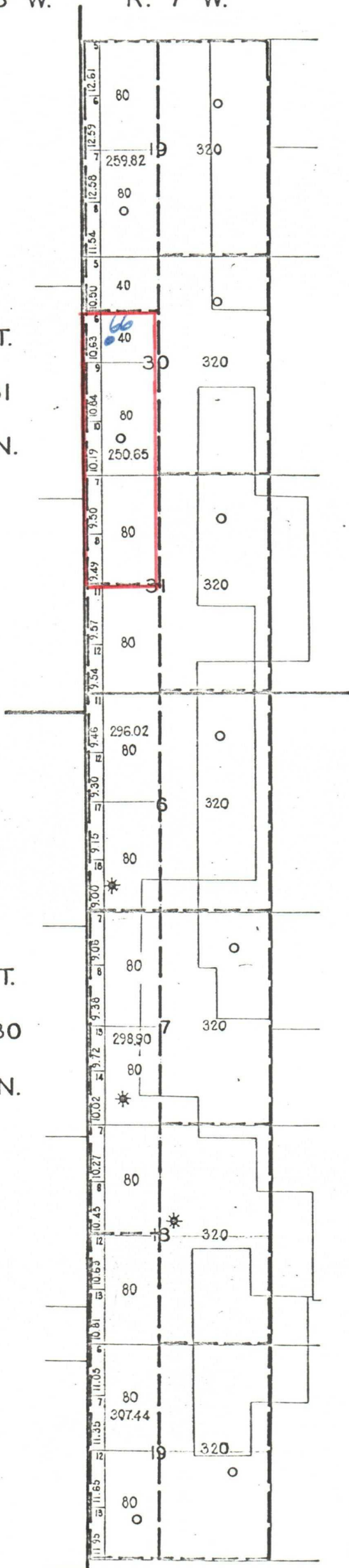
R. 8 W.

R. 7 W.

T.  
31  
N.

Case No. #1006  
R-750-A

T.  
30  
N.



—PORTION OF—  
NORTHEAST  
BLANCO  
UNIT  
SAN JUAN & RIO ARriba  
COUNTIES  
NEW MEXICO

- Completed Oil Well
- Location or Drilling Well
- ◇ Dry Hole
- ⊗ Abandoned Location
- \* Gas Well

SCALE: 1" = 3000'    DAM SITE

OIL CONSERVATION COMMISSION  
Hytes DISTRICT

APR 01 1978  
OIL CONSERVATION COMMISSION  
Santa Fe

OIL CONSERVATION COMMISSION  
BOX 2088  
SANTA FE, NEW MEXICO

DATE 3-14-78

RE: Proposed MC \_\_\_\_\_  
Proposed DHC \_\_\_\_\_  
Proposed NSL ✓ \_\_\_\_\_  
Proposed SWD \_\_\_\_\_  
Proposed WFX \_\_\_\_\_  
Proposed PMX \_\_\_\_\_

R. L. Stamets

Gentlemen:

I have examined the application dated 3-2-78  
for the Blackwood & Nichols Co. Northeast Blanco Unit #66A  
Operator Lease and Well No. Unit, S-T-R  
E-31-31N-7W

and my recommendations are as follows:

Approve  
\_\_\_\_\_  
\_\_\_\_\_  
\_\_\_\_\_  
\_\_\_\_\_  
\_\_\_\_\_

Yours very truly,

AK Kendrick