



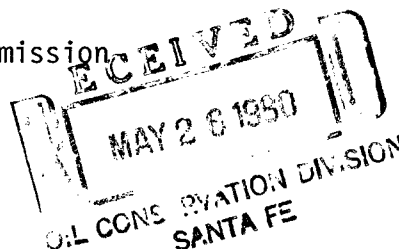
POWERS ELEVATION

hsl - 1209

OIL WELL ELEVATIONS AND LOCATIONS
CHERRY CREEK PLAZA, SUITE 1201
600 SOUTH CHERRY STREET
DENVER, COLORADO 80222
PHONE NO. 303/321-2217

May 21, 1980

New Mexico Oil & Gas Conservation Commission
Joe D. Ramey, Director
P. O. Box 2088
Santa Fe, New Mexico 87501



NSL - 1209
Rule 104F
Immediate
no offset

RE: Filing Exception to Rule 104F
Supron Energy Corporation
#23 Newsom
NE SE Sec. 20 T26N R8W
1910' FSL & 1290' FEL
San Juan County, New Mexico

Dear Mr. Ramey:

Ballard Pictured Cliffs pool

Supron Energy Corporation requests an exception to Rule 104F for the above-captioned well location. Enclosed is a location and elevation plat and a topographic map.

The location was staked at the above coordinates due to extreme topographic difficulties.

Supron Energy Corporation has the operating rights to the Pictured Cliffs formation on the surrounding acreage, so no other leaseholders are involved.

Should you require any additional information in order to approve this application for exception to Rule 104F, please call.

Thank you.

Sincerely,

POWERS ELEVATION

Darryl Cooper

Darryl Cooper

DC/dc

Enclosures

cc: (2) Mexico Oil & Gas Conservation Commission, Aztec, New Mexico
Frances Cooper, Dallas, Texas
Haskell Fleetwood, Supron Energy Corp., Dallas, TX
Rudy Motto, Supron Energy Corp., Farmington, New Mexico

NEW MEXICO OIL CONSERVATION COMMISSION
WELL LOCATION AND ACREAGE DEDICATION PLAT

Form C-102
Supersedes C-120
Effective 1-1-65

All distances must be from the outer boundaries of the Section.

RECEIVED
MAY 26 1980

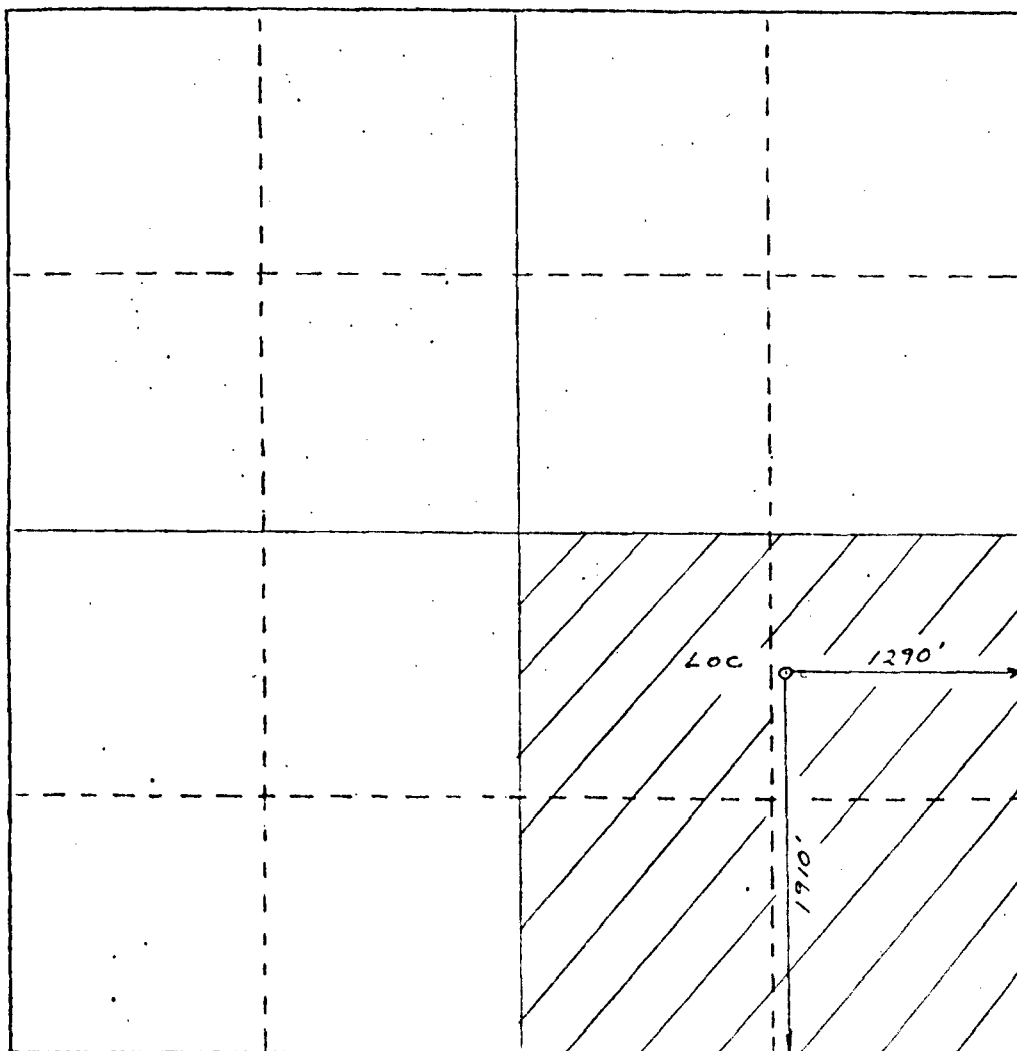
| | | | | | |
|---|----------------------|--|------------------------|-------------------------------|--|
| Operator Supron Energy Corporation | | Lease SF-078433 | | Well No. Newsom #23 | |
| Unit Letter | Section 20 | Township 26 North | Range 8 West | County Santa Fe | |
| Actual Footage Location of Well: | | | | | |
| 1910 feet from the South line and | | 1290 feet from the East line | | | |
| Ground Level Elev. 6330' | Producing Formation | | Pool | Dedicated Acreage Acres | |

1. Outline the acreage dedicated to the subject well by colored pencil or hatchure marks on the plat below.
2. If more than one lease is dedicated to the well, outline each and identify the ownership thereof (both as to working interest and royalty).
3. If more than one lease of different ownership is dedicated to the well, have the interests of all owners been consolidated by communitization, unitization, force-pooling, etc?

☐ Yes ☐ No If answer is "yes," type of consolidation _____

If answer is "no," list the owners and tract descriptions which have actually been consolidated. (Use reverse side of this form if necessary.) _____

No allowable will be assigned to the well until all interests have been consolidated (by communitization, unitization, forced-pooling, or otherwise) or until a non-standard unit, eliminating such interests, has been approved by the Commission.



CERTIFICATION

I hereby certify that the information contained herein is true and complete to the best of my knowledge and belief.

George Lapaseotes
Name **George Lapaseotes**

V. Pres. Powers Elevation
Position

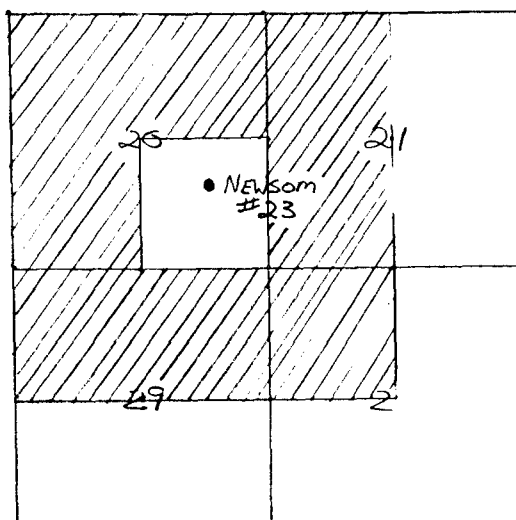
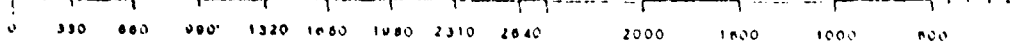
Agent Consultant for

Company
Supron Energy Corporation

Date
5-12-80

I hereby certify that the well location shown on this plat was plotted from field notes of actual surveys made by me or under my supervision, and that the same is true and correct to the best of my knowledge and belief.

Date Survey
George Lapaseotes
Registered Professional Engineer
and of Land Surveyor
6844
NEW MEXICO
REGISTERED PROFESSIONAL ENGINEER
AND LAND SURVEYOR




 - Supron Energy Corporation

EXHIBIT "E" Access Roads to Location

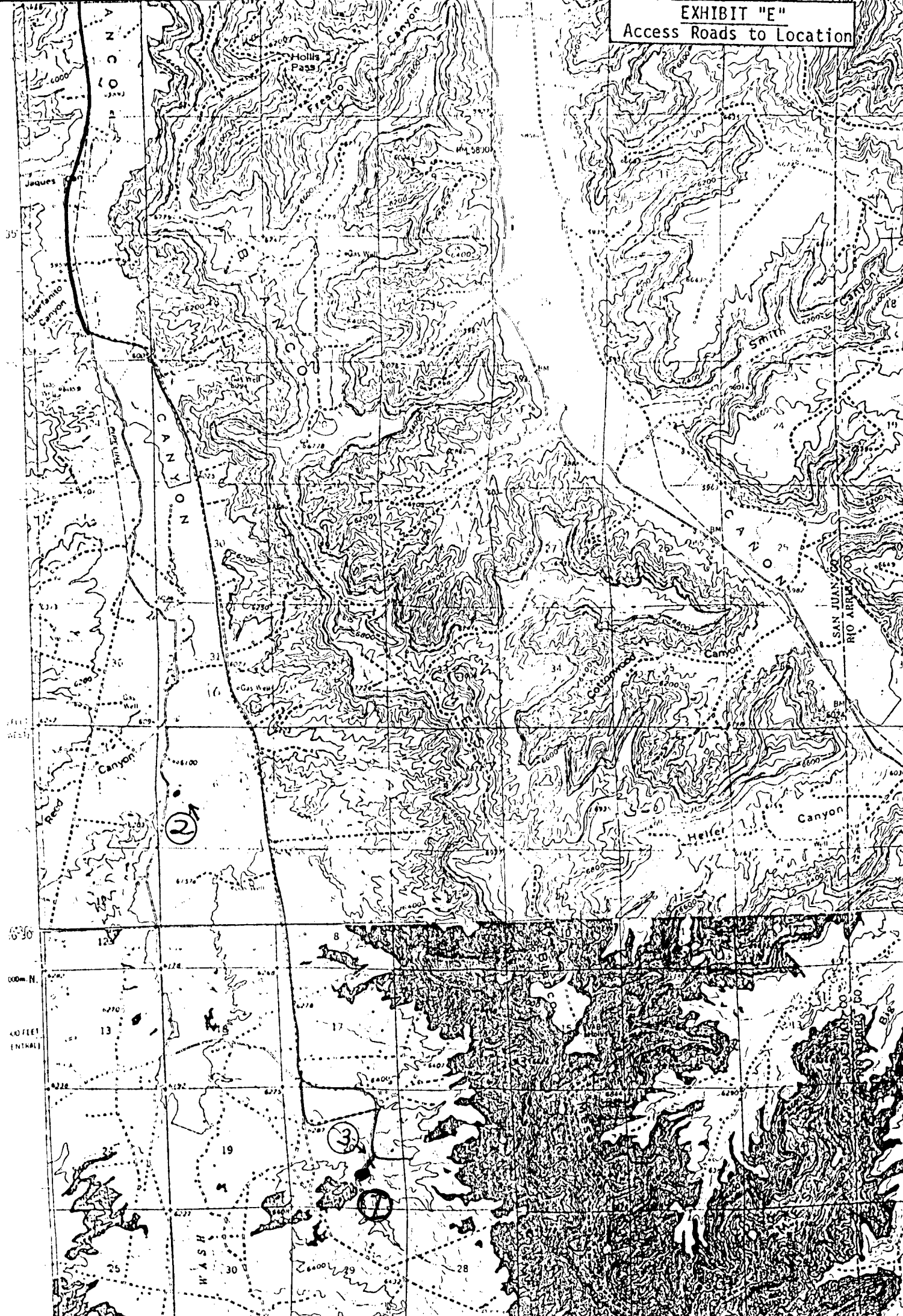


EXHIBIT "E" - Access Road to Location

LEGEND

1. Location:
Supron Energy Corporation
#23 Newsom
NW SE Sec. 20 T26N R8W
1500' FSL & 1780' FEL
San Juan County, New Mexico

Color Coding
County Road
Oil Field Road
New Access Road

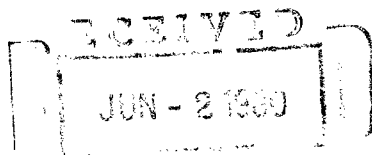
2. Closest Dwelling
3. Cattle Guard

OIL CONSERVATION COMMISSION
Albuquerque DISTRICT

OIL CONSERVATION COMMISSION
BOX 2088
SANTA FE, NEW MEXICO

DATE May 29, 1990

RE: Proposed MC _____
Proposed DHC _____
Proposed NSL x _____
Proposed SWD _____
Proposed WFX _____
Proposed PMX _____



Gentlemen:

OIL CONSERVATION COMMISSION

I have examined the application dated May 27, 1990
for the Superior Energy Corp Newman #23 I-20-26N-8W
Operator Lease and Well No. Unit, S-T-R

and my recommendations are as follows:

Approve

Yours very truly,

Frank S. Chang



STATE OF NEW MEXICO
ENERGY AND MINERALS DEPARTMENT
OIL CONSERVATION DIVISION

May 29, 1980

BRUCE KING
GOVERNOR

LARRY KEHOE
SECRETARY

POST OFFICE BOX 2088
STATE LAND OFFICE BUILDING
SANTA FE, NEW MEXICO 87501
(505) 827-2434

Powers Elevation
Cherry Creek Plaza, Suite 1201
600 South Cherry Street
Denver, Colorado 80222

Re: Application for Non-Standard
Location: Supron Energy Corp.
Newsom Well No. 23, Sec. 20,
T-26-N, R-8-W, San Juan County

We may not process the subject application for non-standard location until the required information or plats checked below (is) (are) submitted.

- ☐ A plat must be submitted clearly showing the ownership of the offsetting leases.
- ☐ A statement must be submitted that offset owners have been notified of the application by certified mail.
- ☒ A plat must be submitted fully identifying the topography necessitating the non-standard location. The plat submitted is on a scale that makes it impossible to determine the necessity for the unorthodox location. A plat or sketch map about the size of that on our Form C-102 would be more appropriate.
- ☐ Other:

Very truly yours

R. L. STAMETS
Technical Support Chief

RLS/dr

OIL CONSERVATION DIVISION

P. O. BOX 2088

SANTA FE, NEW MEXICO 87501

OIL CONSERVATION DIVISION

SANTA FE

All distances must be from the outer boundaries of the Section

STATE OF NEW MEXICO
ENERGY AND MINERALS DEPARTMENTForm C-102
Revised 10-1-70RECEIVED
JUN - 9 1980

| | | | | | |
|--|----------------------|------------------------|-----------------------------|-------------------------------|--|
| Operator SUPRON ENERGY CORP. | | Lease | | Well No. NEWSOM #23 | |
| Unit Letter | Section 20 | Township 26N | Range 8W | County SAN JUAN | |
| Actual Footage Location of Well: 1910 feet from the SOUTH line and 1290 feet from the EAST line | | | | | |
| Ground Level Elev. | Producing Formation | Pool | Dedicated Acreage: Acres | | |

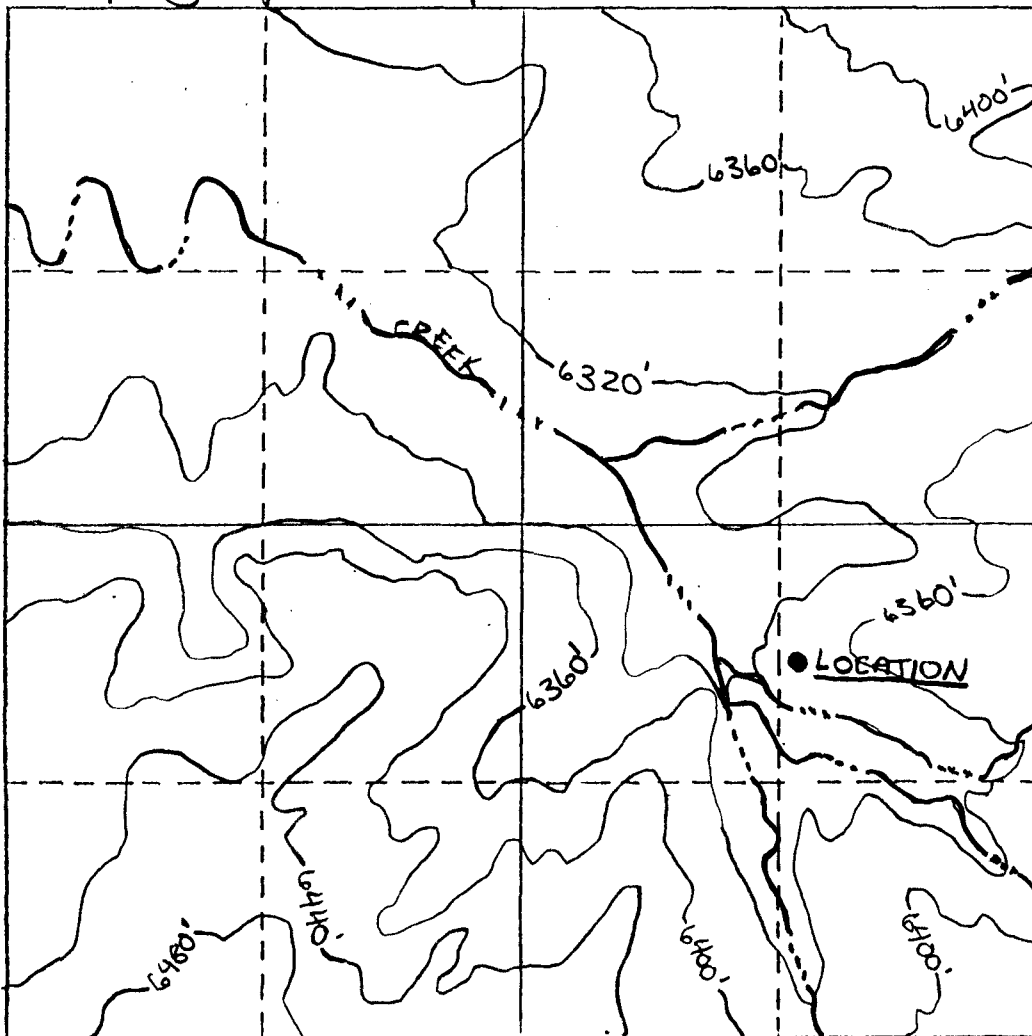
1. Outline the acreage dedicated to the subject well by colored pencil or hachure marks on the plat below.
2. If more than one lease is dedicated to the well, outline each and identify the ownership thereof (both as to working interest and royalty).
3. If more than one lease of different ownership is dedicated to the well, have the interests of all owners been consolidated by communitization, unitization, force-pooling, etc?

☐ Yes ☐ No If answer is "yes," type of consolidation _____

If answer is "no," list the owners and tract descriptions which have actually been consolidated. (Use reverse side of this form if necessary.) _____

No allowable will be assigned to the well until all interests have been consolidated (by communitization, unitization, forced-pooling, or otherwise) or until a non-standard unit, eliminating such interests, has been approved by the Division.

Topographic MAP of WELL LOCATION AREA



CERTIFICATION

I hereby certify that the information contained herein is true and complete to the best of my knowledge and belief.

Name

Position

Company

Date

I hereby certify that the well location shown on this plat was plotted from field notes of actual surveys made by me or under my supervision, and that the same is true and correct to the best of my knowledge and belief.

Date Surveyed

Registered Professional Engineer
and/or Land Surveyor

Certificate No.