

Northwest Pipeline Corporation



PRODUCTION & DRILLING
P. O. BOX 90
FARMINGTON, NEW MEXICO 87401
5110.1-52-80

*NSL-1227
Rule 3 R-1670
no offsets
Immediate
Basin Dakota
Paul*

June 23, 1980

Mr. Frank T. Chavez
New Mexico Oil And Gas
Conservation Commission
1000 Rio Brazos Road
Aztec, New Mexico 87410

NSL - 1227

Dear Mr. Chavez:

We are requesting permission to drill a Dakota well in a Nonstandard location due to topographical reasons. The well is the San Juan 32-7 Unit #59 located in the SW/4 of Sec 18, T32N, R7W. A copy of the surveyors plat and a topographical map is attached. Northwest Pipeline is the operator for all the offsetting acreage.

Thank you,

Paul C. Thompson

Paul C. Thompson
Drilling Engineer

PCT/djb
Attachment

*RECEIVED
JUN 24 1980
OIL CON. COMM.
DIST. 3*



NEW MEXICO OIL CONSERVATION COMMISSION
WELL LOCATION AND ACREAGE DEDICATION PLAT

Form C-102
Supersedes C-128
Effective 1-1-65

All distances must be from the outer boundaries of the Section.

MAY 24 1980

Operator NORTHWEST PIPELINE CORPORATION			Lease SAN JUAN 32-7 UNIT		Well No. 159
Unit Letter L	Section 18	Township 32N	Range 7W	County San Juan	
Actual Footage Location of Well: 1540 feet from the South line and 345 feet from the West line					
Ground Level Elev: 6980	Producing Formation Dakota	Pool Basin Dakota	Dedicated Acreage: 320 Acres		

1. Outline the acreage dedicated to the subject well by colored pencil or hachure marks on the plat below.
2. If more than one lease is dedicated to the well, outline each and identify the ownership thereof (both as to working interest and royalty).
3. If more than one lease of different ownership is dedicated to the well, have the interests of all owners been consolidated by communitization, unitization, force-pooling, etc?

☒ Yes ☐ No If answer is "yes," type of consolidation Unitization

If answer is "no," list the owners and tract descriptions which have actually been consolidated. (Use reverse side of this form if necessary.)

No allowable will be assigned to the well until all interests have been consolidated (by communitization, unitization, forced-pooling, or otherwise) or until a non-standard unit, eliminating such interests, has been approved by the Commission.

CERTIFICATION

I hereby certify that the information contained herein is true and complete to the best of my knowledge and belief.

Paul C. Thompson

Name

Paul C. Thompson

Position

Drilling Engineer

Company

Northwest Pipeline Corp.

Date

May 21, 1980

I hereby certify that the well location shown on this plat was plotted from field notes of actual surveys made by me or under my supervision, and that the same is true and correct to the best of my knowledge and belief.

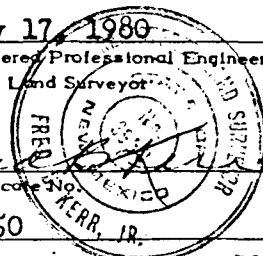
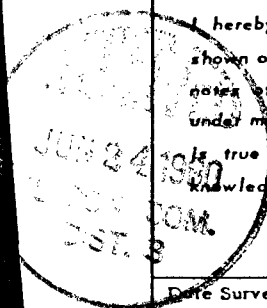
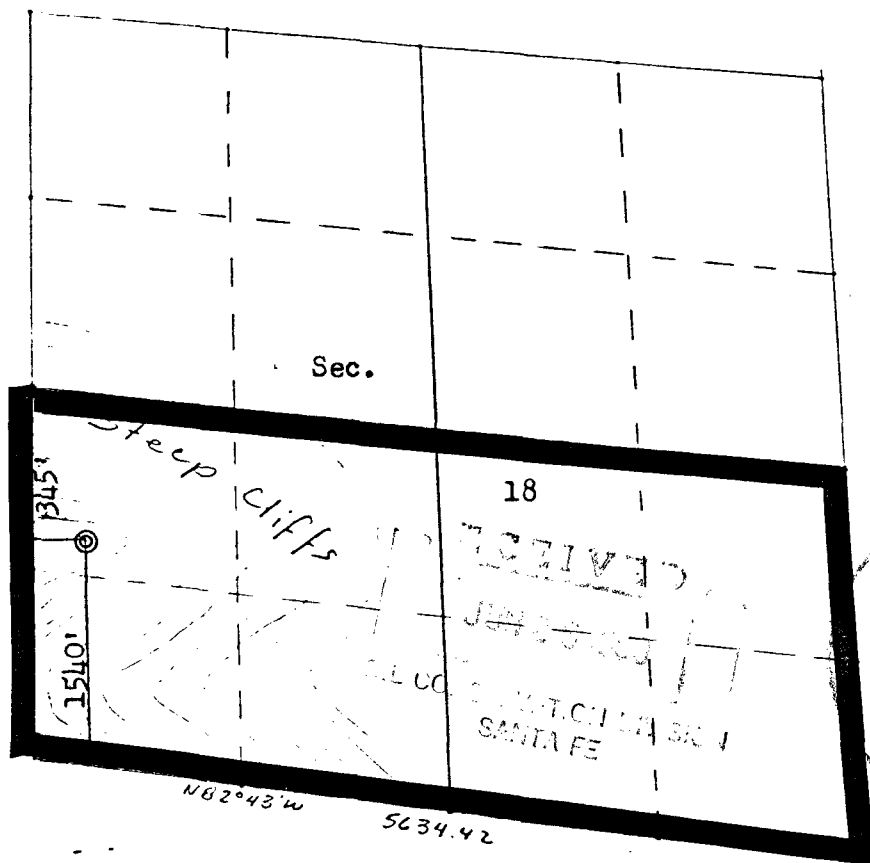
Date Surveyed

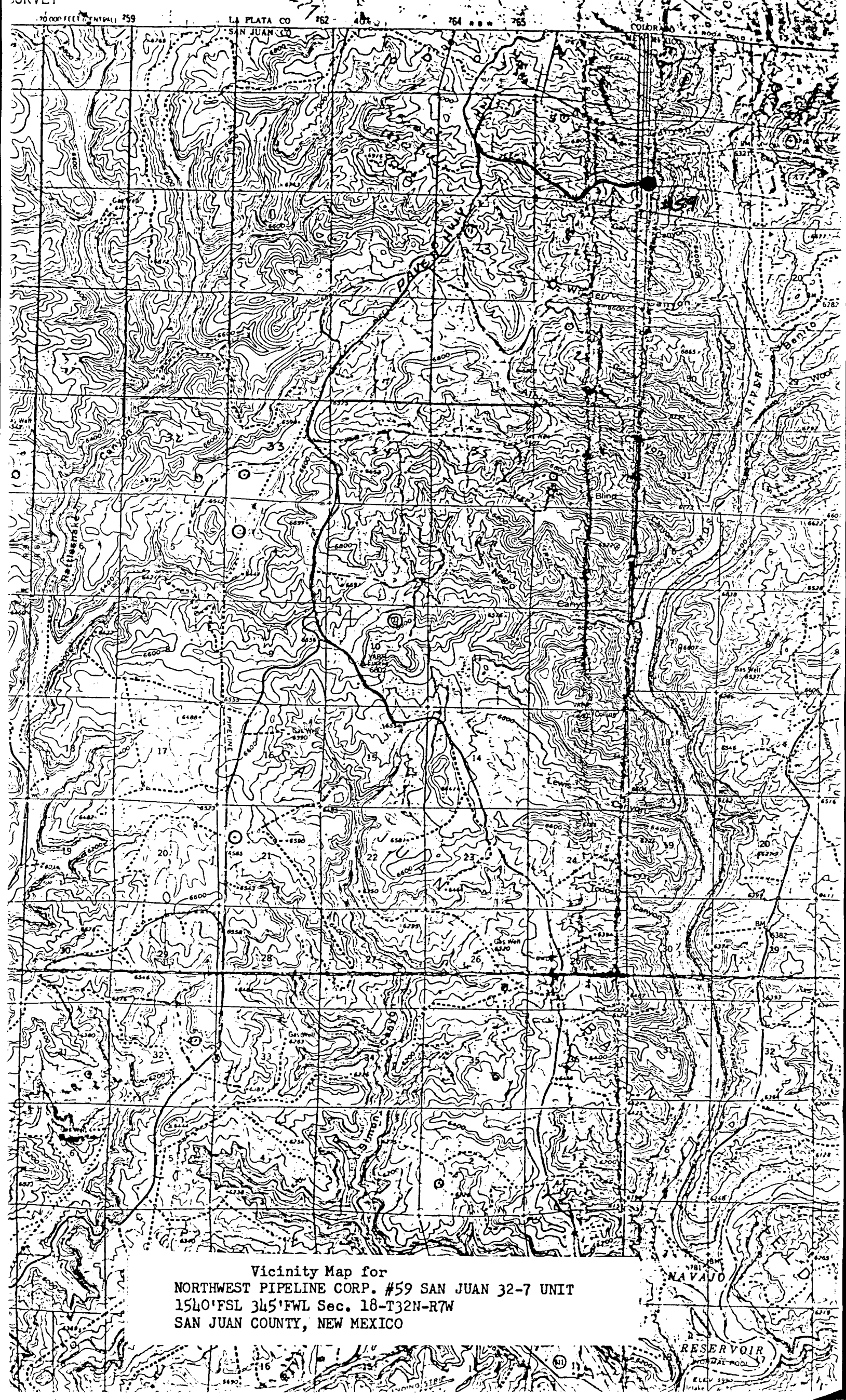
May 17, 1980

Registered Professional Engineer and Land Surveyor

Certificate No.

3950





Vicinity Map for
NORTHWEST PIPELINE CORP. #59 SAN JUAN 32-7 UNIT
1540' FSL 345' FWL Sec. 18-T32N-R7W
SAN JUAN COUNTY, NEW MEXICO

RESERVOIR

OIL CONSERVATION COMMISSION
Alton DISTRICT

OIL CONSERVATION COMMISSION
BOX 2088
SANTA FE, NEW MEXICO

DATE June 25, 1980

RE: Proposed MC _____
Proposed DHC _____
Proposed NSL a _____
Proposed SWD _____
Proposed WFX _____
Proposed PMX _____

RECEIVED
JUN 26 1980
OIL CONSERVATION COMMISSION
SANTA FE

Gentlemen:

I have examined the application dated June 24, 1980
for the Northwest Pipeline Corp. S.F. 32-7 Unit #59 L-18-32N-7u
Operator Lease and Well No. Unit, S-T-R

and my recommendations are as follows:

Approve

Yours very truly,

Frank J. Chang