

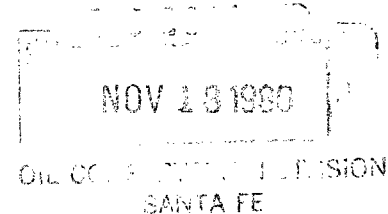
Mobil Producing Texas & New Mexico Inc.

NSL - 1289
Rule 2 (c) R-5353
12-8-80

NINE GREENWAY PLAZA—SUITE 2700
HOUSTON, TEXAS 77046

November 10, 1980

• New Mexico Energy & Minerals Department (3)
Oil Conservation Division
State Land Office Building
P.O. Box 2088
Santa Fe, New Mexico 87501



7.01
UNORTHODOX LOCATION
MOBIL PRODUCING TX. & N.M. INC.
LINDRITH B UNIT
WELL #14
CHACON-DAKOTA ASSOCIATED POOL
RIO ARriba COUNTY, NEW MEXICO

Gentlemen:

Mobil Producing TX. & N.M. Inc. (MPTM) respectfully requests permission to drill the subject well at an unorthodox location because of a gulch which is 25 feet wide and 20 feet deep. This proposed well location was moved in an easterly direction which caused it to be less than 330 feet from an inner subdivision line as required by Rule 2(b) of Order No. R-5353.

Proposed well #14 will be located as follows:

1810' from the North line and
1084' from the West line of
Sec. 16, T24N, R3W
Rio Arriba County, New Mexico

In support of this request, the following items are submitted:

1. Federal Form 9-331C - "Application to Drill"
2. Form C-102 - "Well Location and Acreage Dedication Plat"
3. Plat showing offset lease owners and topography

• MPTM respectfully requests that this unorthodox well location be approved administratively as provided for in Rule 2(c) of Order No. R-5353.

Mobil

Railroad Commission of Texas

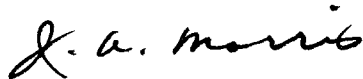
-2-

November 10, 1980

A copy of this letter with attachments is being sent to the offset operator by certified mail as their notice of this application and request for their waiver of objection. The offset operator is:

Arco Oil & Gas Company
P.O. Box 5540
Denver, Colorado 80217

Yours very truly,



J.A. Morris
Regulatory Engineering
Supervisor

LSHall/jrs
Attachments

cc: District Supervisor - Aztec
USGS - Farmington
Offset Operators

UNITED STATES
DEPARTMENT OF THE INTERIOR
GEOLOGICAL SURVEY

APPLICATION FOR PERMIT TO DRILL, DEEPEN, OR PLUG BACK

1a. TYPE OF WORK

DRILL ☒DEEPEN ☐PLUG BACK ☐

b. TYPE OF WELL

OIL
WELL ☒GAS
WELL ☐

OTHER

SINGLE
ZONE ☒MULTIPLE
ZONE ☐

2. NAME OF OPERATOR

Mobil Producing TX & N.M. Inc.

3. ADDRESS OF OPERATOR

Nine Greenway Plaza, Suite 2700, Houston, TX. 77046

4. LOCATION OF WELL (Report location clearly and in accordance with any State requirements.)*

At surface

1810' FNL & 1084' FWL, Sec. 16, T24N, R3W

At proposed prod. zone

Same as surface

14. DISTANCE IN MILES AND DIRECTION FROM NEAREST TOWN OR POST OFFICE*

50 miles Southeast from Farmington

15. DISTANCE FROM PROPOSED*

LOCATION TO NEAREST
PROPERTY OR LEASE LINE, FT.
(Also to nearest drlg. unit line, if any)

1084'

18. DISTANCE FROM PROPOSED LOCATION*
TO NEAREST WELL, DRILLING, COMPLETED,
OR APPLIED FOR, ON THIS LEASE, FT.2621' South
to Well #11

16. NO. OF ACRES IN LEASE

26,365.43

19. PROPOSED DEPTH

8,000'

17. NO. OF ACRES ASSIGNED
TO THIS WELL

160

20. ROTARY OR CABLE TOOLS

Rotary

21. ELEVATIONS (Show whether DF, RT, GR, etc.)

6950' - GR

22. APPROX. DATE WORK WILL START*

December 1, 1980

23. PROPOSED CASING AND CEMENTING PROGRAM

SIZE OF HOLE	SIZE OF CASING	WEIGHT PER FOOT	SETTING DEPTH	QUANTITY OF CEMENT
17-1/2"	12-3/4"*	45.51# H-40	0-400'	1. Circulate to surface w/300 sx.
11"	8-5/8"*	24# S-80	0-3100'	2. Circulate to surface w/900 sx.
		28# S-80	3100-3900'	
7-7/8"	5-1/2"*	15.5# K-55	0-7000'	3. Circulate to Approx. 3800'
		17# K-55	7000-7700'	w/950 sx. in two stages

*All casing will be new.

CEMENTING PROGRAM

1. Class B with 2% CaCl₂.

2. Lite weight & Class B

3. Lite weight & Class B

MUD PROGRAM

Depth	Type of Mud	Weight	Viscosity	ph	Water Loss
0-400'	Spud Mud	9.0 - 9.2	35-45	9+	NC
400'- TD	Fresh Water Gel	8.8	35-40	9+	10 cc's

BLOWOUT PREVENTER PROGRAM

See attachment

LOGGING PROGRAM: Type

IES

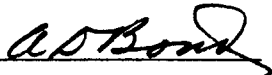
FDL/CNL

Depth

Surf. to TD

Surf. to TD

IN ABOVE SPACE DESCRIBE PROPOSED PROGRAM: If proposal is to deepen or plug back, give data on present productive zone and proposed new productive zone. If proposal is to drill or deepen directionally, give pertinent data on subsurface locations and measured and true vertical depths. Give blowout preventer program, if any.

24.  Regulatory Engineering

SIGNED

TITLE Coordinator II

DATE October 22, 1980

(This space for Federal or State office use)

PERMIT NO.

APPROVAL DATE

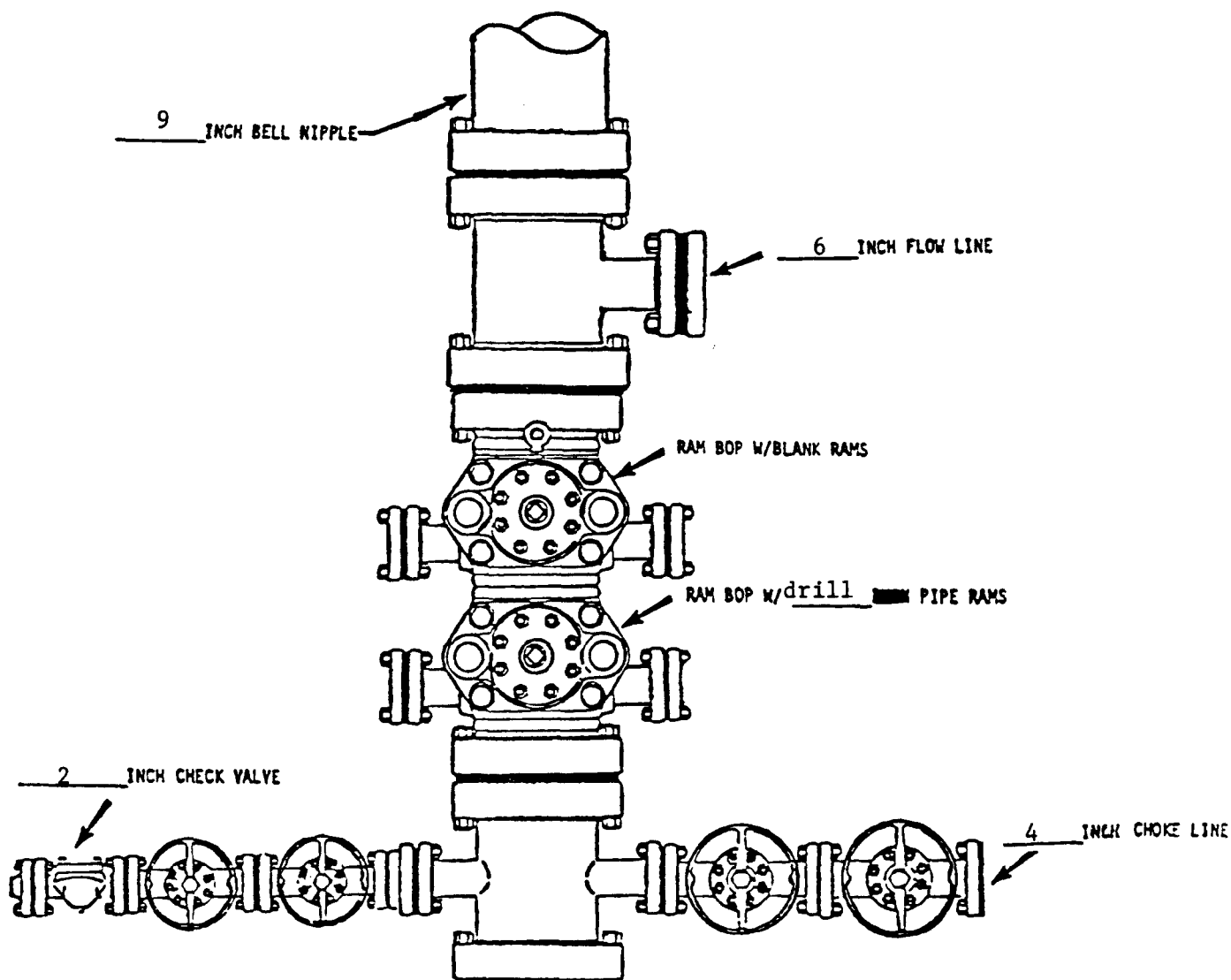
APPROVED BY

TITLE

DATE

CONDITIONS OF APPROVAL, IF ANY:

*See Instructions On Reverse Side



BOP rams will be actuated on each trip of drill pipe and will be tested before drilling the plug on each casing string.

*NOTE: ALL VALVES ARE METAL-TO-METAL SEAL AND FLANGED. ALL COMPONENTS MUST MEET ABOVE MINIMUM PRESSURE RATINGS. ALL COMPONENTS TO BE TESTED TO RATED PRESSURE AFTER ASSEMBLY AND BEFORE FURTHER DOWNHOLE OPERATIONS MAY BE CONDUCTED.

Mobil Producing Texas & New Mexico Inc. Houston, Texas		Scale
		Date
Well # <u>14</u> <u>Lindrith B Unit</u>		Drawn
(Lease)		Checked
Rio Arriba County, NM State		Approved
Blowout Preventer Assembly		Revised
(9 IN. 3000 PSI WP*)		

**NEW MEXICO OIL CONSERVATION COMMISSION
WELL LOCATION AND ACREAGE DEDICATION PLAT**

Form C-102
Supersedes C-128
Effective 1-1-65

All distances must be from the outer boundaries of the Section.

Operator Mobil Producing TX. & N.M. Inc.			Lease Lindrith B Unit		Well No. 14
Unit Letter E	Section 16	Township 24N	Range 3W	County Rio Arriba	
Actual Footage Location of Well: 1810 feet from the North line and 1084 feet from the West line					
Ground Level Elev. 6950'	Producing Formation Dakota	Pool Chacon-Dakota Associated		Dedicated Acreage: 160 Acres	

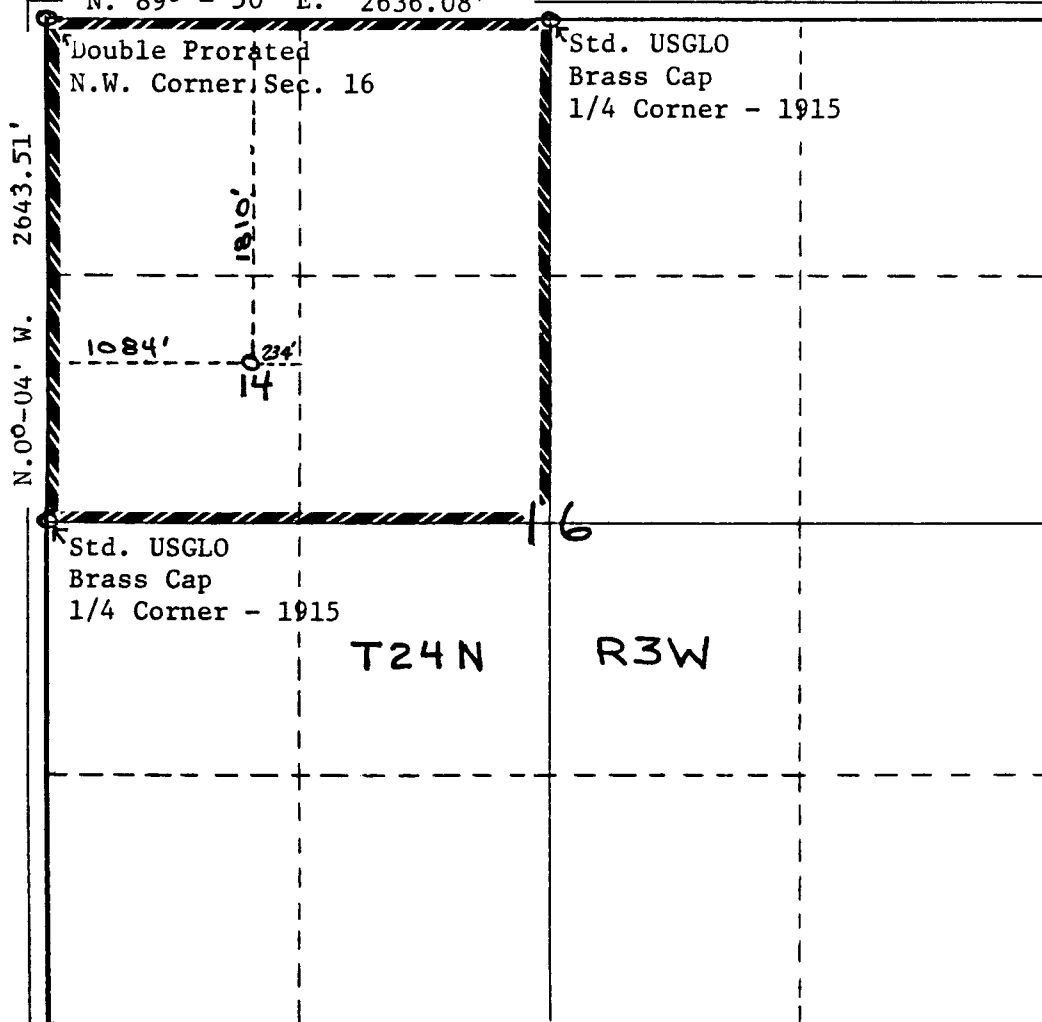
1. Outline the acreage dedicated to the subject well by colored pencil or hachure marks on the plat below.
2. If more than one lease is dedicated to the well, outline each and identify the ownership thereof (both as to working interest and royalty).
3. If more than one lease of different ownership is dedicated to the well, have the interests of all owners been consolidated by communitization, unitization, force-pooling, etc?

☒ Yes ☐ No If answer is "yes," type of consolidation: Unitization

If answer is "no," list the owners and tract descriptions which have actually been consolidated. (Use reverse side of this form if necessary.) _____

No allowable will be assigned to the well until all interests have been consolidated (by communitization, unitization, forced-pooling, or otherwise) or until a non-standard unit, eliminating such interests, has been approved by the Commission.

N. 89° - 50' E. 2636.08'



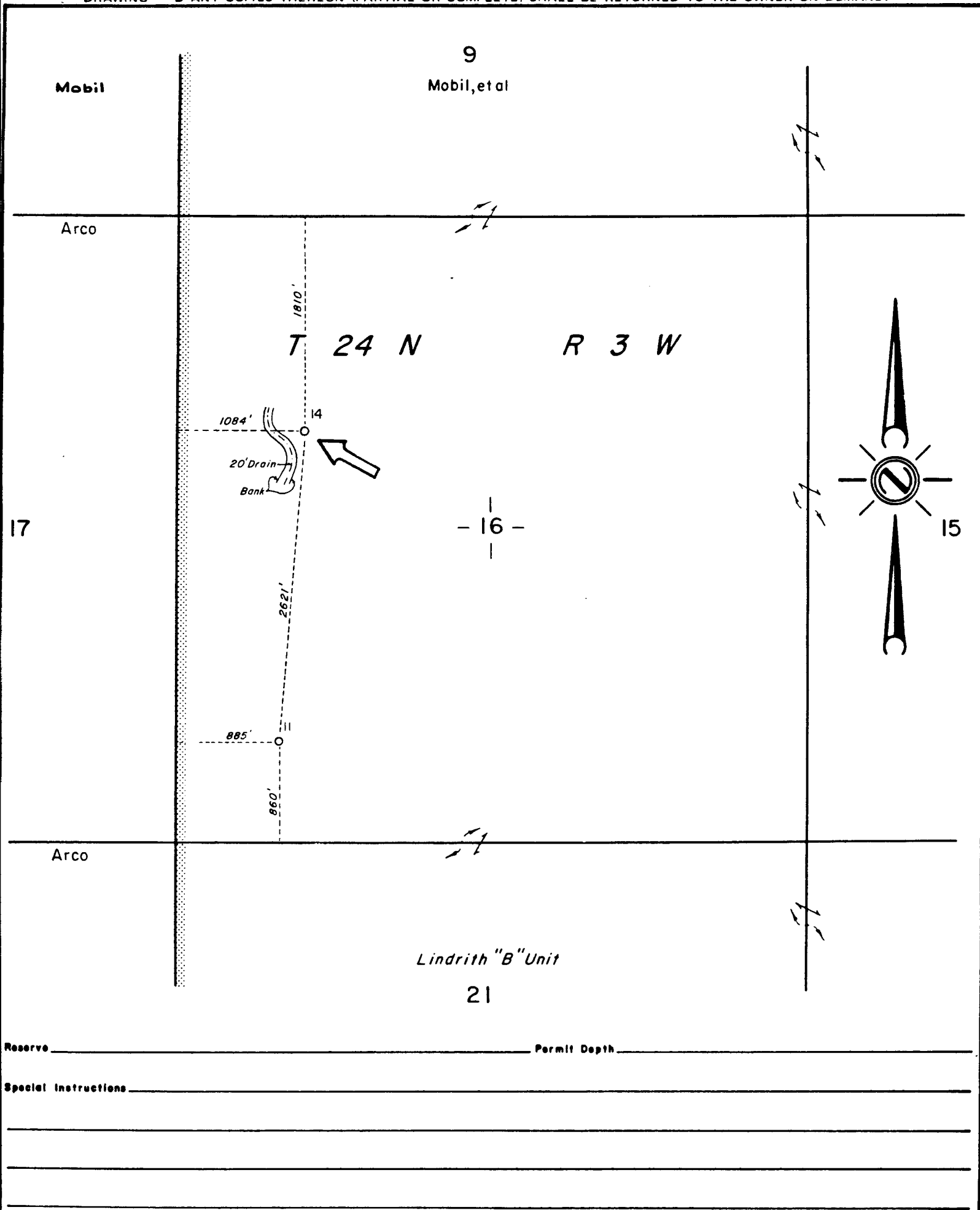
CERTIFICATION

I hereby certify that the information contained herein is true and complete to the best of my knowledge and belief.

A. D. Bond
 Name
A. D. Bond
 Position **Regulatory Engineering Coordinator II**
 Company **Mobil Producing TX. & N.M. Inc.**
 Date
October 22, 1980

I hereby certify that the well location shown on this plat was plotted from field notes of actual surveys made by me or under my supervision, and that the same is true and correct to the best of my knowledge and belief.

H. A. Carson, Jr.
 Date Surveyed
September 22, 1980
 Registered Professional Engineer and/or Land Surveyor
H. A. Carson, Jr.
 Certificate No.
5063



Reserve _____ Permit Depth _____

Special Instructions _____

THE STATE OF TEXAS
COUNTY OF HARRIS

I hereby certify that this plat truly represents conditions as they actually exist on this lease; that said plat which is drawn to the scale indicated hereon, is to the best of my knowledge true and correct; that it accurately shows said lease with all wells on same; that number and locations of said wells are as indicated hereon; and that this plat correctly reflects all pertinent and required data.

" Partial Plat "

Mobil Producing Texas & New Mexico Inc.
Houston, Texas

LEASE Lindrith "B" Unit
WELL NO. 14 DATE 11-10- 1980
LEASE NO. _____
TOTAL ACRES IN LEASE 26,365.43 ACRES COVERED BY PLAT _____
DESCRIPTION Section 16, T24N-R3W of 26,365.43
Acre Unit
50 Miles SE of Farmington
Rio Arriba County, New Mexico

DRAWN T. Ray DATE 5-20-80 FIELD Chacon - Dakota
SCALE 1"=1000' FILE NO. 20



Mark K. Mosley
Division Manager
Production Department
Hobbs Division
North American Production

Conoco Inc.
P.O. Box 480
726 E. Michigan
Hobbs, NM 88240
(505) 393-4141

RECEIVED
MAR 01 1982
OIL CONSERVATION DIVISION
SANTA FE

February 18, 1982

1289

New Mexico Oil Conservation Division
P.O. Box 2088
Santa Fe, New Mexico 87501

Gentlemen:

Offset Operator Approval - Non-Standard Proration Unit - South Royalty A
No. 4 - Tubb Gas, 660' FSL & 660' FEL of Section 4, T-21S, R-37E,
Lea County, New Mexico

Conoco Inc. has approved as offset operator, Amoco's subject request.
One copy is attached for your file and one copy is being returned to
Amoco.

Very truly yours,

HAI:rej
CC:
Amoco Production Company
P.O. Box 68
Hobbs, New Mexico 88240



Amoco Production Company (USA)
Post Office Box 68
Hobbs, New Mexico 88240
OIL CONSERVATION DIVISION
MAR 01 1982
SANTA FE

S. J. Okerson
District Superintendent

January 29, 1982

File: SJO-WF-148

Re: Offset Operator Approval
Non-Standard Proration Unit
Southland Royalty A #4
Tubb Gas
660' FSL x 660' FEL
Section 4, T-21-S, R-37-E
Lea County, New Mexico

Conoco
P. O. Box 460
Hobbs, NM 88240

Gentlemen:

We are requesting your approval to form an 80 acre non-standard proration unit for our Southland Royalty A Lease Well No. 4. The well is located 660' FSL and 660' FEL, Section 4, T-21-S, R-37-E, Tubb Gas Pool, Lea County, New Mexico.

This non-standard proration unit was established by the reclassification of our Southland Royalty A Lease Well No. 8 to a Tubb oil well which required 40 acres to be dedicated out of the original 120 acre dedication. Well No. 8 is located 660' FSL and 1980' FEL, Section 4, T-21-S, R-37-E, Lea County, New Mexico.

Please indicate your approval on the enclosed letters and return one each to:

Amoco Production Company
P. O. Box 68
Hobbs, New Mexico 88240

Oil Conservation Division of
The New Mexico Department of
Energy and Minerals
P. O. Box 2088
Santa Fe, New Mexico 87502

Yours very truly,

Attachments

Approve request for non-standard proration unit

Approved By

M. K. Mosley

M. K. Mosley - Conoco

OIL CONSERVATION COMMISSION
Cyfer DISTRICT

OIL CONSERVATION COMMISSION
BOX 2088
SANTA FE, NEW MEXICO

DATE November 22, 1980

RE: Proposed MC _____
Proposed DHC _____
Proposed NSL x _____
Proposed SWD _____
Proposed WFX _____
Proposed PMX _____

Gentlemen:

I have examined the application dated November 14, 1980
for the Mobil P S. NM Dr. Lindeth B Unit #14 E-16-24N-3W
Operator Lease and Well No. Unit, S-T-R

and my recommendations are as follows:

Approve

Yours very truly,

Frank J. Long