

# Gulf Oil Exploration and Production Company

R. C. Anderson  
PRODUCTION MANAGER, HOBBS AREA

August 24, 1982

P. O. Box 670  
Hobbs, NM 88240

Re: Recompletion of Eddy "GR" State #1  
Section 16-T23S-R28E

NSL (58)

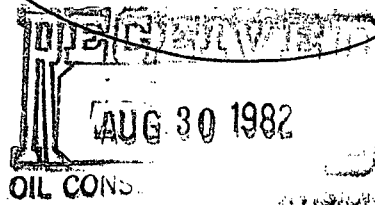
Rule 5 R-6139

OCT 2. 1982

2230 N  
660  
RECEIVED

AUG 26 1982

O. C. D.  
ARTESIA, OFFICE



Leslie A. Clements  
District Supervisor  
Artesia District Office  
Oil Conservation Division  
P. O. Drawer DD  
Artesia, New Mexico 88210

Dear Sir:

Attached herewith are forms C-102, C-103, and C-104 for our Eddy "GR" State #1 Well which was recently recompleted in the Undesignated South Culebra Bluff Bone Springs Pool in Eddy County. Since this well is located 250 feet from the center of a quarter-quarter section we request that an exception to the footage requirement of Rule 4 of the special pool rules be granted. This letter will also serve as notification of offset operators.

Yours very truly,

  
R. C. ANDERSON

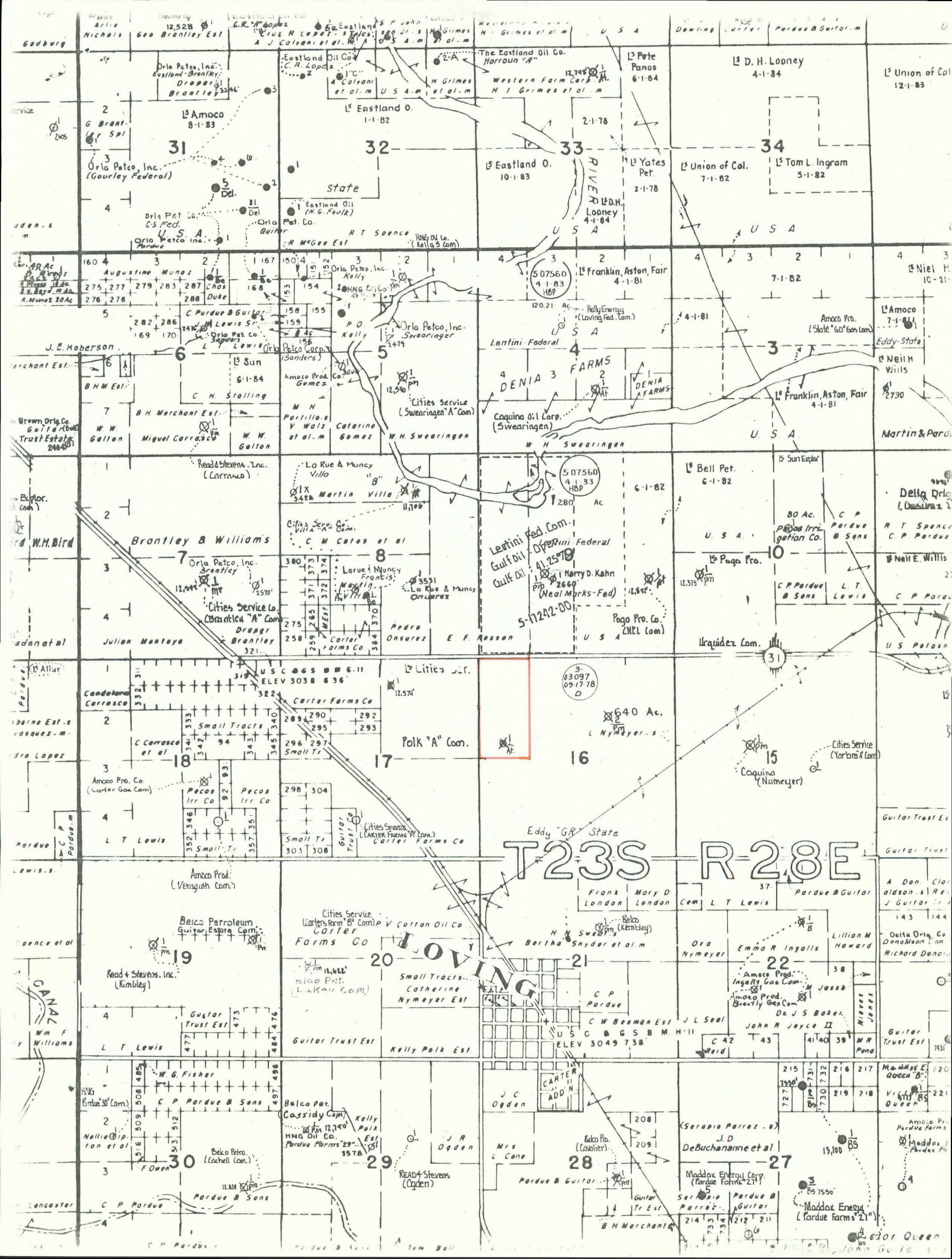
SWC/skc

cc: Cities Service Co.  
P. O. Box 1919  
Midland, Texas 79702

LaRue and Muncy  
P. O. Box 196  
Artesia, New Mexico 88210



A DIVISION OF GULF OIL CORPORATION



All distances must be from the outer boundaries of the Section.

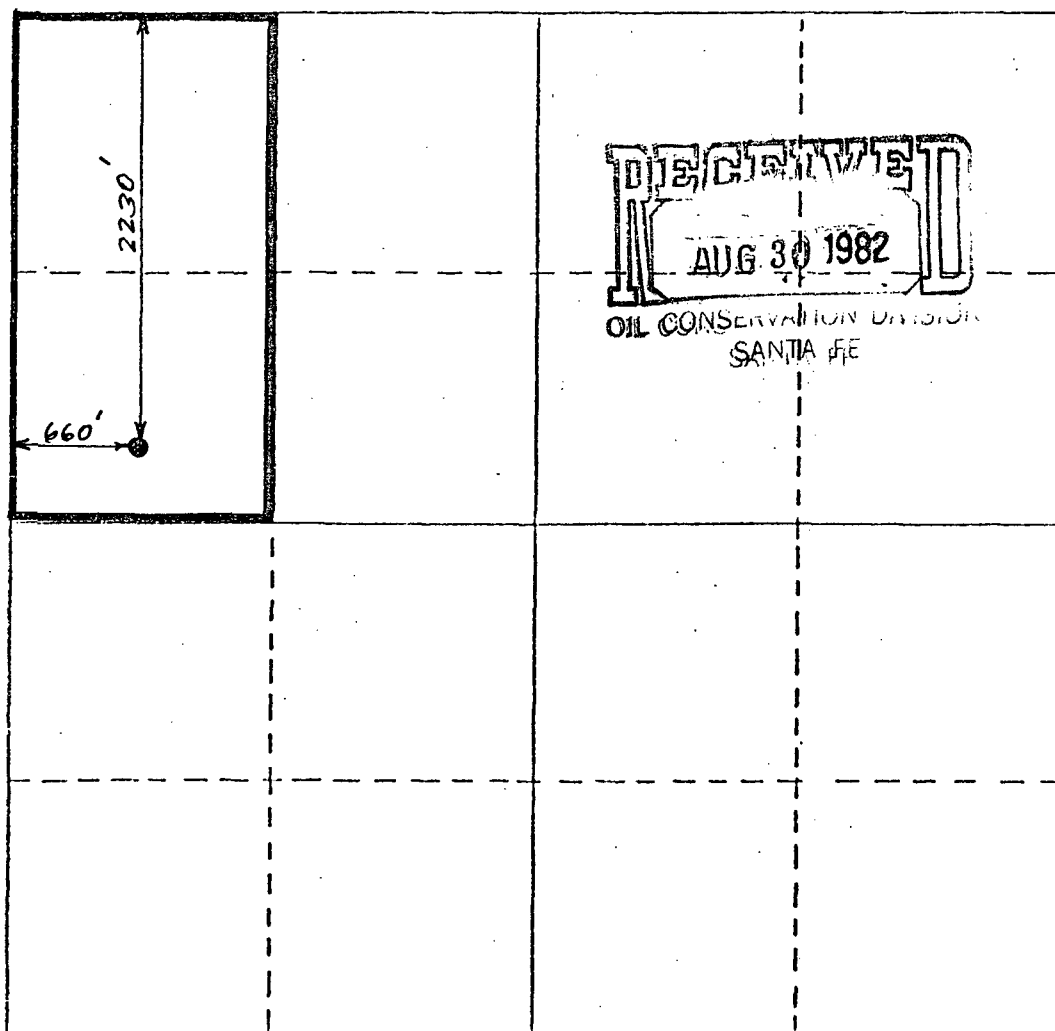
Operator <b>Gulf Oil Corporation</b>			Lease <b>Eddy "CR" State</b>		Well No. <b>1</b>
Unit Letter <b>E</b>	Section <b>16</b>	Township <b>23S</b>	Range <b>28E</b>	County <b>Eddy</b>	
Actual Footage Location of Well: <b>2230</b> feet from the <b>North</b> line and <b>660</b> feet from the <b>West</b> line					
Ground Level Elev. <b>3021'</b>	Producing Formation <b>Bone Springs</b>		Pool <b>Undes. S. Culebra Bone Springs</b>		Dedicated Acreage: <b>80</b> Acres

1. Outline the acreage dedicated to the subject well by colored pencil or hatchure marks on the plat below.
2. If more than one lease is dedicated to the well, outline each and identify the ownership thereof (both as to working interest and royalty).
3. If more than one lease of different ownership is dedicated to the well, have the interests of all owners been consolidated by communitization, unitization, force-pooling, etc?

☐ Yes ☐ No If answer is "yes," type of consolidation \_\_\_\_\_

If answer is "no," list the owners and tract descriptions which have actually been consolidated. (Use reverse side of this form if necessary.) \_\_\_\_\_

No allowable will be assigned to the well until all interests have been consolidated (by communitization, unitization, forced-pooling, or otherwise) or until a non-standard unit, eliminating such interests, has been approved by the Division.



CERTIFICATION

I hereby certify that the information contained herein is true and complete to the best of my knowledge and belief.

*R. D. Pitre*

Name

**R. D. Pitre**

Position

**Area Engineer**

Company

**Gulf Oil Corporation**

Date

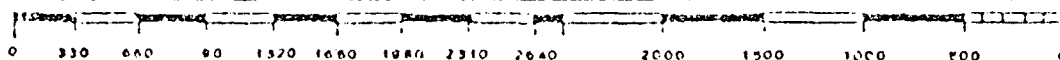
**8-23-82**

I hereby certify that the well location shown on this plat was plotted from field notes of actual surveys made by me or under my supervision, and that the same is true and correct to the best of my knowledge and belief.

Date Surveyed

Registered Professional Engineer and/or Land Surveyor

Certificate No.





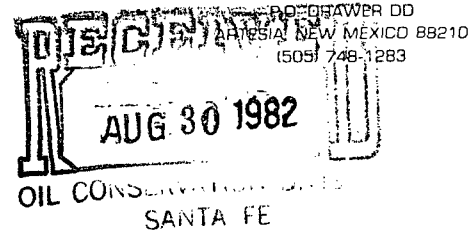
STATE OF NEW MEXICO  
ENERGY AND MINERALS DEPARTMENT

OIL CONSERVATION DIVISION  
ARTESIA DISTRICT OFFICE

August 27, 1982

BRUCE KING  
GOVERNOR

LARRY KEHOE  
SECRETARY



Gulf Oil Exploration and Producing Company  
P. O. Box 610  
Hobbs, New Mexico 88240

Re: Eddy "GR" State No.1 E  
Section 16-T23S-R28E

Attn: Mr. R. C. Anderson

Gentlemen:

We are in receipt of Division Forms C-102, C-103 and C-104  
on the above captioned well.

However, exception to Division Order R-6139 A - Rule 4 and  
Rule 5 must be approved by the Division Director.

Your letter of transmittal is being forwarded to Santa Fe  
for their approval.

Yours truly,

*Leslie A. Clements*  
Leslie A. Clements  
District Supervisor

LAC:fc

xc: Well file  
Mr. Joe Ramey  
Box 2088  
Santa Fe, NM



STATE OF NEW MEXICO  
ENERGY AND MINERALS DEPARTMENT  
OIL CONSERVATION DIVISION

BRUCE KING  
GOVERNOR  
LARRY KEHOE  
SECRETARY

POST OFFICE BOX 2088  
STATE LAND OFFICE BUILDING  
SANTA FE, NEW MEXICO 87501  
(505) 827-2434

August 31, 1982

Gulf Oil Exploration and  
Production Company  
P.O. Box 670  
Hobbs, NM 88240

Re: Application for Non-Standard  
Location: Eddy "GR" State Well No. 1  
Section 16, Township 23 South, Range 28  
East, Eddy County, New Mexico.

We may not process the subject application for non-standard location until the required information or plats checked below (is) (are) submitted.

☐ A plat must be submitted clearly showing the ownership of the offsetting leases.

☒ A statement must be submitted that offset owners have been notified of the application by certified mail.

☐ A plat must be submitted fully identifying the topography necessitating the non-standard location.

☐ Other:

Very truly yours

R. L. STAMETS  
Technical Support Chief

RLS/dr

# Gulf Oil Exploration and Production Company

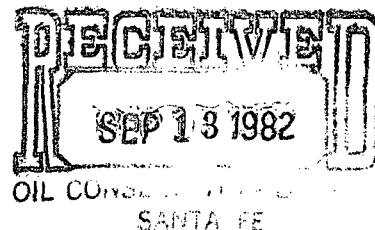
R. C. Anderson  
PRODUCTION MANAGER, HOBBS AREA

September 7, 1982

P. O. Box 670  
Hobbs, NM 88240

Re: Application for Non-Standard Location  
Eddy "GR" State #1 - Section 16-T23S-R28E  
Eddy County, New Mexico

R. L. Stamets  
Technical Support Chief  
Energy and Minerals Department  
Oil Conservation Division  
P. O. Box 2088  
Santa Fe, New Mexico 87501



Dear Sir:

This is to notify you that offset operators have been notified of the subject application by certified mail.

Yours very truly,

  
R. C. ANDERSON

SWC/skc



A DIVISION OF GULF OIL CORPORATION