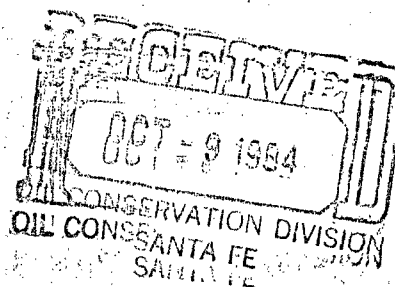




Union Texas  
Petroleum

Southwest Division  
4000 North Big Spring  
Suite 500  
Midland, TX 79705  
Telephone (915) 684-0600



September 28, 1984

Energy and Minerals Department  
Oil Conservation Commission  
P. O. Box 2088  
Santa Fe, New Mexico 87501

Attn: Mr. Gilbert Quintana

Re: Request for Approval of Unorthodox Well Location  
in our Langlie-Jal Unit, Lea County, New Mexico

Gentlemen:

Union Texas Petroleum Corporation ask approval of unorthodox locations for the following wells:

Langlie-Jal Unit #106-A, 1075' FNL & 1100' FNL, Section 32, T-24-S, R-37-E.  
(State Lease)

*NE/4 NE/4 Sec. 32 dedicated*

Langlie-Jal Unit #107-C, 1142' FNL & 2518' FWL, Section 4, T-25-S, R-37-E.  
(This is a Federal Lease with application to drill being filed in the Roswell District Office).

*NE/4 & NW/4 OF Sec. 4 dedicated*

All offset operators are being sent a copy of this "Application to Drill" by certified mail.

Approval of this application at your earliest convenience will be appreciated.

Yours very truly,

William A. Higgins  
Regulatory Compliance Coordinator

WAH/gad

*NSL-1916*

*RULE 104FI*

*Release Oct. 29, 1984*

*FEDERAL  
LEASE*

UNITED STATES  
DEPARTMENT OF THE INTERIOR  
GEOLOGICAL SURVEY

## APPLICATION FOR PERMIT TO DRILL, DEEPEN, OR PLUG BACK

## 1a. TYPE OF WORK

DRILL ☒DEEPEN ☐PLUG BACK ☐

## b. TYPE OF WELL

OIL  
WELL ☒GAS  
WELL ☐

OTHER

SINGLE  
ZONE ☐MULTIPLE  
ZONE ☐

## 2. NAME OF OPERATOR

Union Texas Petroleum Corporation

## 3. ADDRESS OF OPERATOR

4000 N. Big Spring, Suite 500, Midland, TX 79705

## 4. LOCATION OF WELL (Report location clearly and in accordance with any State requirements.\*)

At surface

Unit M, 1142' FNL &amp; 2518' FWL of Section

At proposed prod. zone

Unit M, 1142' FNL &amp; 2518' FWL of Section

## 14. DISTANCE IN MILES AND DIRECTION FROM NEAREST TOWN OR POST OFFICE\*

Three (3) miles north of Jal, NM

## 15. DISTANCE FROM PROPOSED\*

LOCATION TO NEAREST  
PROPERTY OR LEASE LINE, FT.  
(Also to nearest drlg. unit line, if any)

## 16. NO. OF ACRES IN LEASE

3748.06

17. NO. OF ACRES ASSIGNED  
TO THIS WELL

20

18. DISTANCE FROM PROPOSED LOCATION\*  
TO NEAREST WELL, DRILLING, COMPLETED,  
OR APPLIED FOR, ON THIS LEASE, FT.

## 19. PROPOSED DEPTH

3800

## 20. ROTARY OR CABLE TOOLS

Rotary

## 21. ELEVATIONS (Show whether DF, RT, GR, etc.)

3227' GR

## 22. APPROX. DATE WORK WILL START\*

December 1984

## 23.

## PROPOSED CASING AND CEMENTING PROGRAM

SIZE OF HOLE	SIZE OF CASING	WEIGHT PER FOOT	SETTING DEPTH	QUANTITY OF CEMENT
11	8-5/8	24	800	425 sx.
7-7/8	5-1/2	14	3800	1100 sx.

Propose to drill to depth of 3800' to test the Seven Rivers-Queen formation.

BOP - 2000 psi. MVP

IN ABOVE SPACE DESCRIBE PROPOSED PROGRAM: If proposal is to deepen or plug back, give data on present productive zone and proposed new productive zone. If proposal is to drill or deepen directionally, give pertinent data on subsurface locations and measured and true vertical depths. Give blowout preventer program, if any.

## 24.

SIGNED



TITLE

Regul. Compl. Coord

DATE

September 27, 1984

(This space for Federal or State office use)

PERMIT NO.

APPROVAL DATE

APPROVED BY

TITLE

DATE

CONDITIONS OF APPROVAL, IF ANY:

\*See Instructions On Reverse Side

**NEW MEXICO OIL CONSERVATION COMMISSION  
WELL LOCATION AND ACREAGE DEDICATION PLAT**

Form C-102  
Supersedes C-128  
Effective 1-1-65

All distances must be from the outer boundaries of the Section.

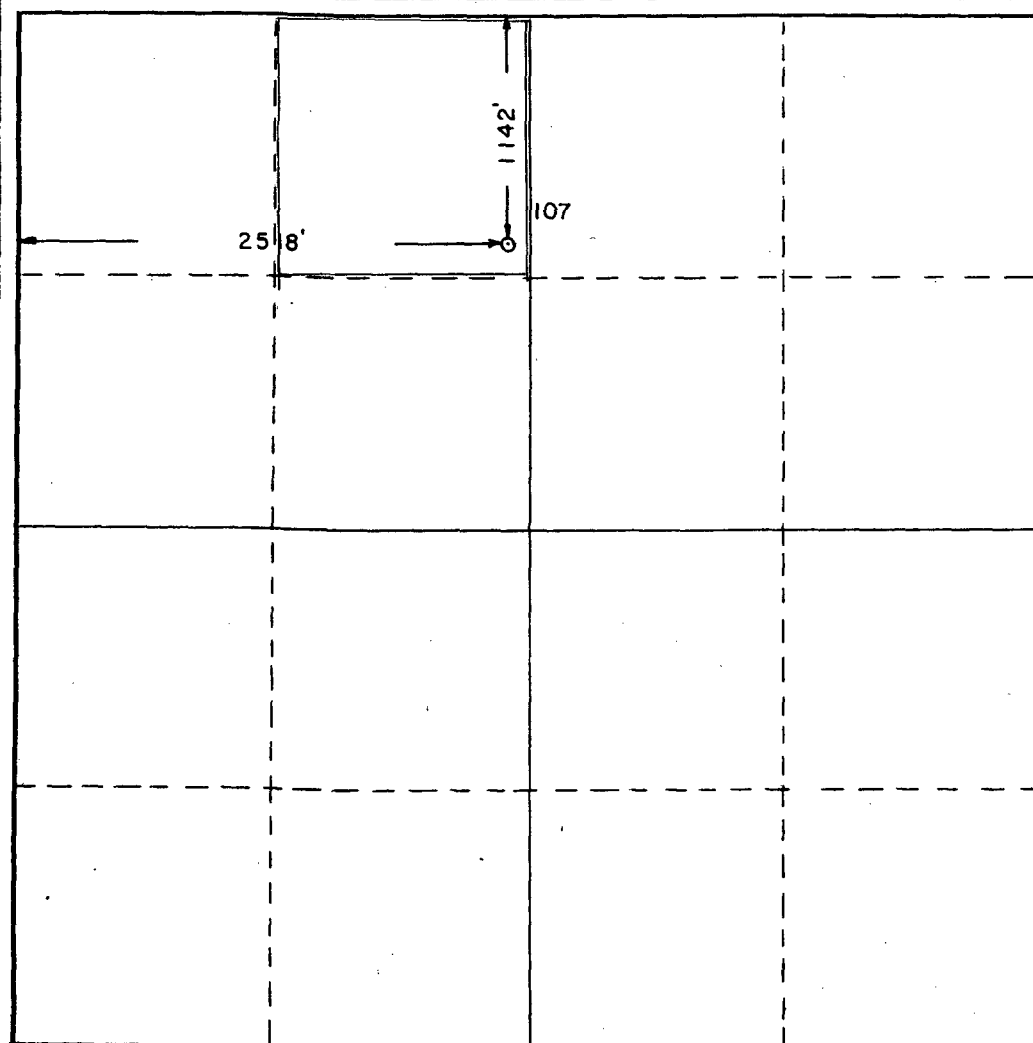
Operator <b>Union Texas Petroleum Corp.</b>			Lease <b>Langlie-Jal Unit</b>		Well No. <b>107</b>
Unit Letter <b>C</b>	Section <b>4</b>	Township <b>25-S</b>	Range <b>37-E</b>	County <b>Lea</b>	
Actual Footage Location of Well: <b>1142</b> feet from the <b>North</b> line and <b>2518</b> feet from the <b>West</b> line					
Ground Level Elev: <b>3227'</b>	Producing Formation <b>Seven-Rivers Queen</b>		Pool <b>Langlie Mattix</b>		Dedicated Acreage: <b>20</b> Acres

1. Outline the acreage dedicated to the subject well by colored pencil or hachure marks on the plat below.
2. If more than one lease is dedicated to the well, outline each and identify the ownership thereof (both as to working interest and royalty).
3. If more than one lease of different ownership is dedicated to the well, have the interests of all owners been consolidated by communitization, unitization, force-pooling, etc?

☒ Yes    ☐ No    If answer is "yes," type of consolidation Secondary Recovery Waterflood Unit

If answer is "no," list the owners and tract descriptions which have actually been consolidated. (Use reverse side of this form if necessary.) \_\_\_\_\_

No allowable will be assigned to the well until all interests have been consolidated (by communitization, unitization, forced-pooling, or otherwise) or until a non-standard unit, eliminating such interests, has been approved by the Commission.



**CERTIFICATION**

I hereby certify that the information contained herein is true and complete to the best of my knowledge and belief.

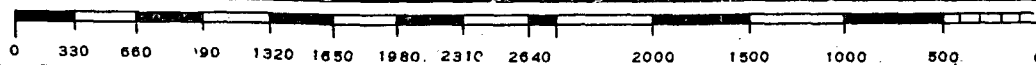
Name William H. Higgins  
Position \_\_\_\_\_  
Regul. Compl. Coord. \_\_\_\_\_  
Company Union Texas Petroleum Corp.  
Date September 27, 1984

I hereby certify that the well location shown on this plat was plotted from field notes of actual surveys made by me or under my supervision, and that the same is true and correct to the best of my knowledge and belief.

9/24/84

Date Surveyed \_\_\_\_\_  
Registered Professional Engineer and/or Land Surveyor

Mark E. Shaw  
Certificate No. 2189



LANGLIE JAL UNIT WELLS  
NO. 106-A and No. 107-C  
OFFSET OPERATORS

CONOCO, INC.  
P. O. Box 460  
Hobbs, N.M. 88240

AMERADA HESS, CORP.  
P. O. Box 1655  
Lovington, N.M. 88260

D. MCCASLAND  
P. O. Box 98  
Eunice, New Mexico 88231

DOYLE HARTMAN  
500 N. Main  
Midland, Texas 79701

PHILLIPS  
4001 Penbrook  
Odessa, Texas 79762

BURLESON, INC.  
P. O. Box 2479  
Midland, Texas 79702

