

KELLAHIN & KELLAHIN
Attorney at Law

W. Thomas Kellahin
New Mexico Board of Legal
Specialization Recognized Specialist
in the area of Natural resources-
oil and gas law

P.O. Box 2265
Santa Fe, New Mexico 87504
117 North Guadalupe
Santa Fe, New Mexico 87501

Telephone 505-982-4285
Facsimile 505-982-2047
tkellahin@aol.com

January 2, 2003

HAND DELIVERED

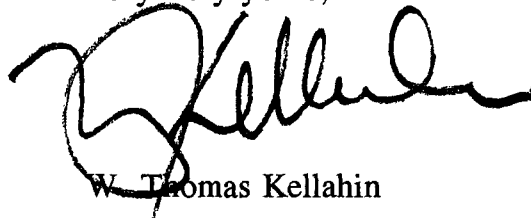
Mr. Michael E. Stogner
Oil Conservation Division
1220 South Saint Francis Drive
Santa Fe, New Mexico 87501

RE: DC Hardy Well No. 6
330 feet FSL & 1330 feet FEL
Unit O, SW/4SE/4 Section 20, T21S, R37E
Administrative Application of
Apache Corporation for approval
of an unorthodox oil well location,
Penrose Skelly Grayburg Pool,
Lea County, New Mexico

Dear Mr. Stogner:

Please find enclosed our administrative application for approval of
an unorthodox oil well location for Apache Corporation's DC Hardy Well
No. 6.

Very truly yours,



W. Thomas Kellahin

fxc: Apache Corporation
Attn: Mario Moreno

03 JAN -2 PM 2:39
OIL CONSERVATION DIV.

**STATE OF NEW MEXICO
ENERGY, MINERALS AND NATURAL RESOURCES DEPARTMENT
OIL CONSERVATION DIVISION**

**IN THE MATTER OF THE ADMINISTRATIVE
APPLICATION OF APACHE CORPORATION
FOR APPROVAL OF AN UNORTHODOX OIL WELL
LOCATION, LEA COUNTY, NEW MEXICO**

ADMINISTRATIVE APPLICATION

Comes now Apache Corporation, by and through its attorneys, Kellahin and Kellahin, and in accordance with Division General Rule 104.F, applies to the New Mexico Oil Conservation Division for administrative approval of an unorthodox oil well location for its DC Hardy Well No. 6 ("Well No. 6") to be drilled and completed for production from the Grayburg formation at an unorthodox well location 330 feet FSL and 1330 feet FEL of Section 20, T21S, R37E, Eddy County, New Mexico, and dedicated to a standard 40-acre proration and spacing unit consisting of the Unit O of this section for production from the Penrose Skelly Grayburg Pool, and in support states:

(1) Apache Corporation ("Apache") is the current operator for the SW/4SE/4 (Unit O) of Section 20, T21S, R37E. See Exhibit 1 (Form C-102).

(2) Section 17 is within the current boundary of the Penrose Skelly Grayburg Pool which is subject to Division Rule 104.

(3) Apache's proposed location encroaches towards the SE/4SE/4 which contains Apache operated DC Hardy "GO" Well No. 3 and the DC Hardy Well No.1 which no longer produce from the Grayburg. See Exhibit 2 (location plat) and Exhibit 3-A (production map)

**Administrative Application of
Apache Corporation
Page 2**

(4) This proposed unorthodox well location is based upon a combination of geologic and drainage reasons:

(a) Grayburg Production:

All 4 Grayburg Wells produced from the Upper Grayburg.

The proposed unorthodox well location is approximately equidistant between the older producers which should minimize depletion risk in the Upper Grayburg. (See Exhibit 3-A)

Petroleum engineering calculations demonstrate the potential to recovery approximately 61,000 barrels of additional oil that will not be recovery from the existing wells. (See Exhibit 3-B)

(c) Grayburg Formation:

The Grayburg is separated into the Upper and Lower Grayburg (See Exhibit 4)

(b) Upper Grayburg Geology:

Based upon thickness, the proposed unorthodox well location represented the best remaining location between Units O and P. (See Exhibit 5).

(e) Lower Grayburg Geology:

Apache's activity in offsetting section has demonstrate that commercial reserves are also present in the Lower Grayburg. Sufficient Lower Grayburg porosity can be encountered in the SW/4SE/4 of Section 17 to support drilling a well at the proposed unorthodox location which cannot be obtained at any standard location in the spacing unit. (See Exhibit 6).

NOTICE

(5) Notice has been send to the adjoining interest owners towards whom the location encroaches. (See Exhibits 7)

CORRELATIVE RIGHTS

(6) The working interest owners in the SW/4SE/4 and the SE/SE/4 of Section 20 are the same: Apache

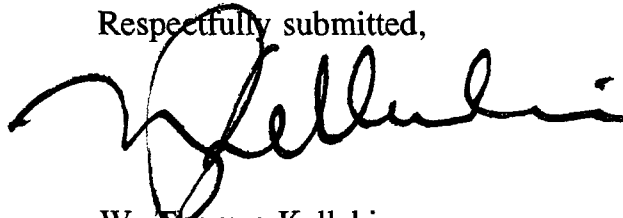
(7) The royalty and overriding royalty owners are the same.

(8) The Operator is the same.

DIFFERENT OPERATOR IN SAME SPACING UNIT

(9) The Chevron/Texaco operated Hardy GO Well 2, located in Unit O, in no longer productive and will not be concurrently produced with Apache's proposed well.

Respectfully submitted,

A handwritten signature in black ink, appearing to read 'W. Thomas Kellahin', written over a horizontal line.

W. Thomas Kellahin
Kellahin and Kellahin
P.O. Box 2265
Santa Fe, New Mexico 87504-2265
(505) 982-4285
Attorneys for Applicant

DISTRICT I
P.O. Box 1980, Hobbs, NM 88241-1980

State of New Mexico
Energy, Minerals and Natural Resources Department

Form C-102
Revised February 10, 1994
Submit to Appropriate District Office
State Lease - 4 Copies
Fee Lease - 3 Copies

DISTRICT II
P.O. Drawer DD, Artesia, NM 88211-0719

OIL CONSERVATION DIVISION

P.O. Box 2088
Santa Fe, New Mexico 87504-2088

DISTRICT III
1000 Rio Brazos Rd., Aztec, NM 87410

DISTRICT IV
P.O. Box 2088, SANTA FE, N.M. 87504-2088

WELL LOCATION AND ACREAGE DEDICATION PLAT

☐ AMENDED REPORT

API Number	Pool Code	Pool Name
Property Code	Property Name DC HARDY	Well Number 6
OGRID No.	Operator Name APACHE CORPORATION	Elevation 3482'

Surface Location

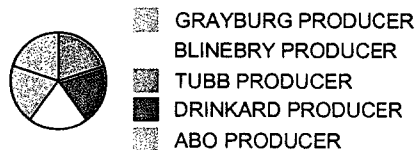
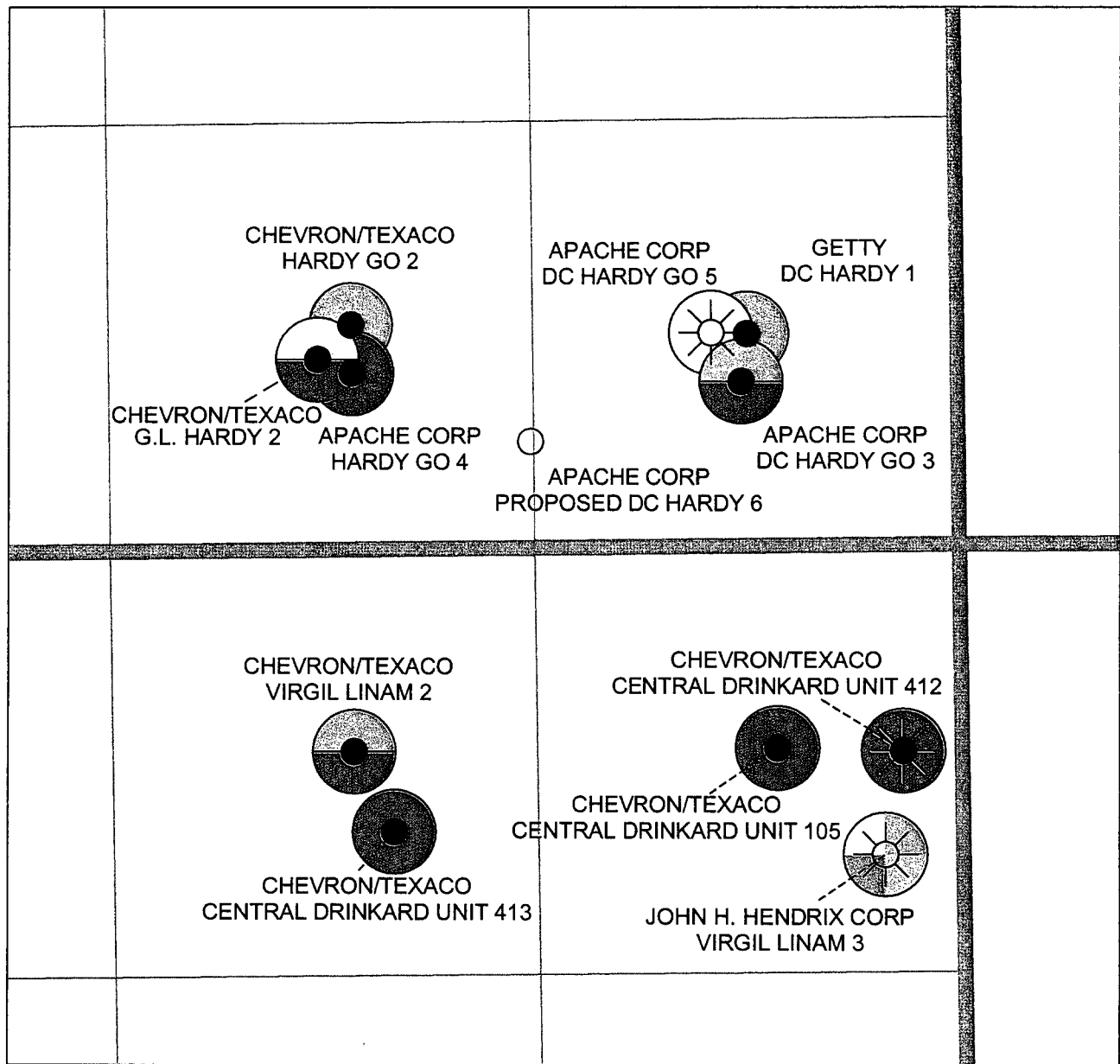
UL or lot No.	Section	Township	Range	Lot Idn	Feet from the	North/South line	Feet from the	East/West line	County
0	20	21-S	37-E		330	SOUTH	1330	EAST	LEA

Bottom Hole Location If Different From Surface

UL or lot No.	Section	Township	Range	Lot Idn	Feet from the	North/South line	Feet from the	East/West line	County
Dedicated Acres	Joint or Infill	Consolidation Code	Order No.						

NO ALLOWABLE WILL BE ASSIGNED TO THIS COMPLETION UNTIL ALL INTERESTS HAVE BEEN CONSOLIDATED
OR A NON-STANDARD UNIT HAS BEEN APPROVED BY THE DIVISION

	<p>GEOGRAPHIC COORDINATES SPC NME NAD 1927 Y = 532230.7 X = 855630.3 LAT. - 32°27'28.57"N LONG. - 103°10'49.39"W</p>	<p>OPERATOR CERTIFICATION</p> <p>I hereby certify the the information contained herein is true and complete to the best of my knowledge and belief.</p> <p>Signature _____</p> <p>Printed Name _____</p> <p>Title _____</p> <p>Date _____</p>
	<p>SURVEYOR CERTIFICATION</p> <p>I hereby certify that the well location shown on this plat was plotted from field notes of actual surveys made by me or under my supervision, and that the same is true and correct to the best of my belief.</p> <p>NOVEMBER 27, 2002</p> <p>Date Surveyed _____</p> <p>Signature & Seal of Professional Surveyor _____</p> <p>Certification No. RONALD J. EIDSON 3239 GARY EIDSON 12641</p>	

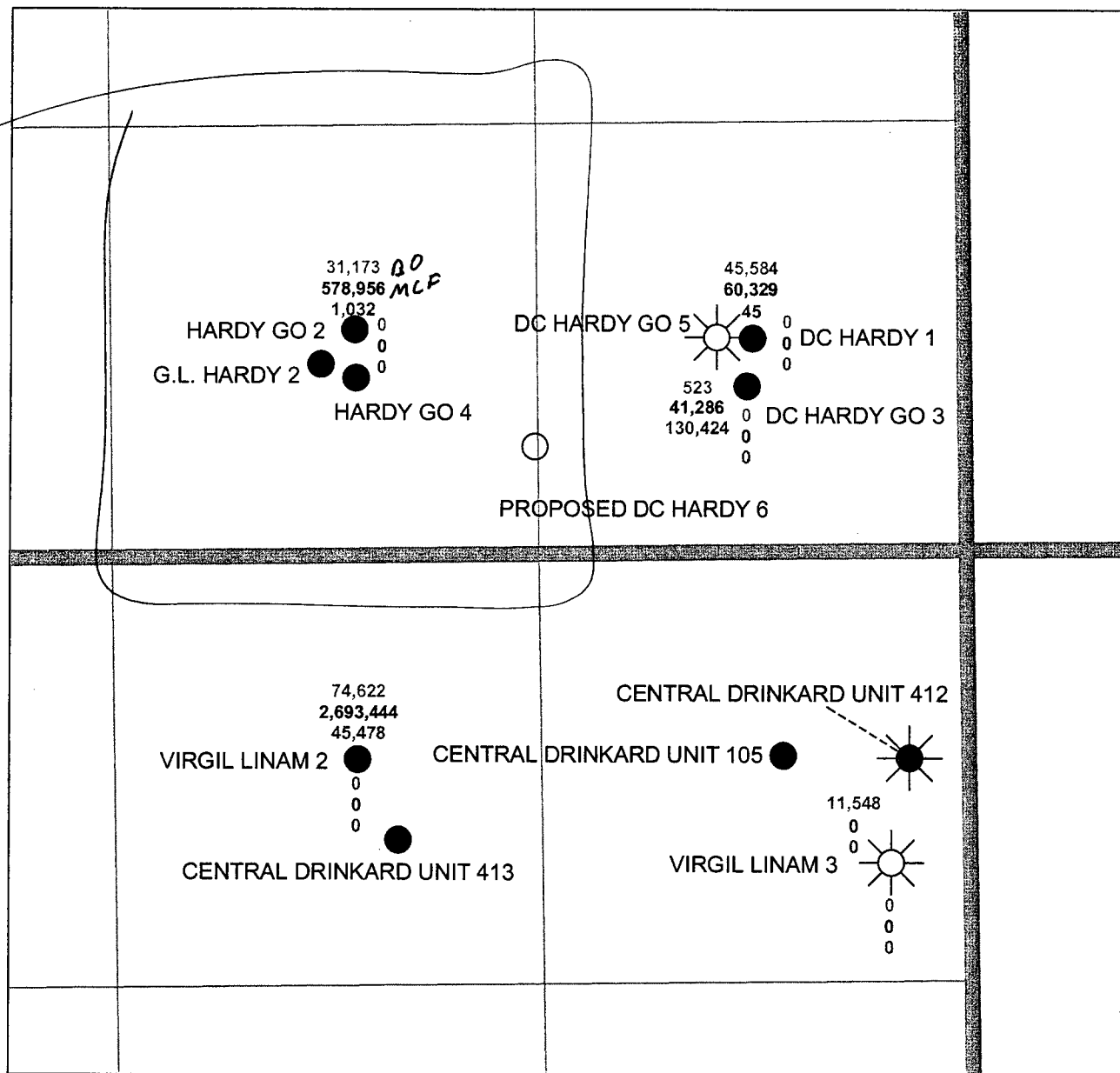


WELL SYMBOLS

- Location Only
- Oil Well
- ⊛ Oil & Gas Well



	TWO WARREN PLACE, SUITE 1500 6120 SOUTH YALE TULSA, OKLAHOMA 74138-4224
	D.C. HARDY #6 SEC. 20-T21 S-R37E LEA COUNTY, NEW MEXICO
EXHIBIT 2 WELL INFORMATION	
DATE: 12-16-02 DWG: DC HARDY 6 EX-2 (CURTIS/OC-DNM)	



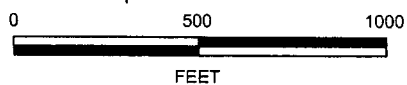
POSTED WELL DATA

CUM OIL
CUM GAS
CUM WATER

DAILY OIL
DAILY GAS
DAILY WATER

WELL SYMBOLS

- Location Only
- Oil Well
- ☀ Oil & Gas Well



TWO WARREN PLACE, SUITE 1500
6120 SOUTH YALE
TULSA, OKLAHOMA 74136-4224

D.C. HARDY #6

SEC. 20-T21S-R37E
LEA COUNTY, NEW MEXICO

EXHIBIT 3-A
GRAYBURG PRODUCTION

DATE: 12-16-02

DWG: DC HARDY 6 EX-3 (CURTIS/OCD-NM)



TULSA EXPLORATION DEPARTMENT
INTER-OFFICE MEMO

DATE: January 2, 2003
TO: Tom Kellahin
FROM: Bob Curtis
SUBJECT: Reserve Calculations for NSLs

Estimated Ultimate Recoveries:

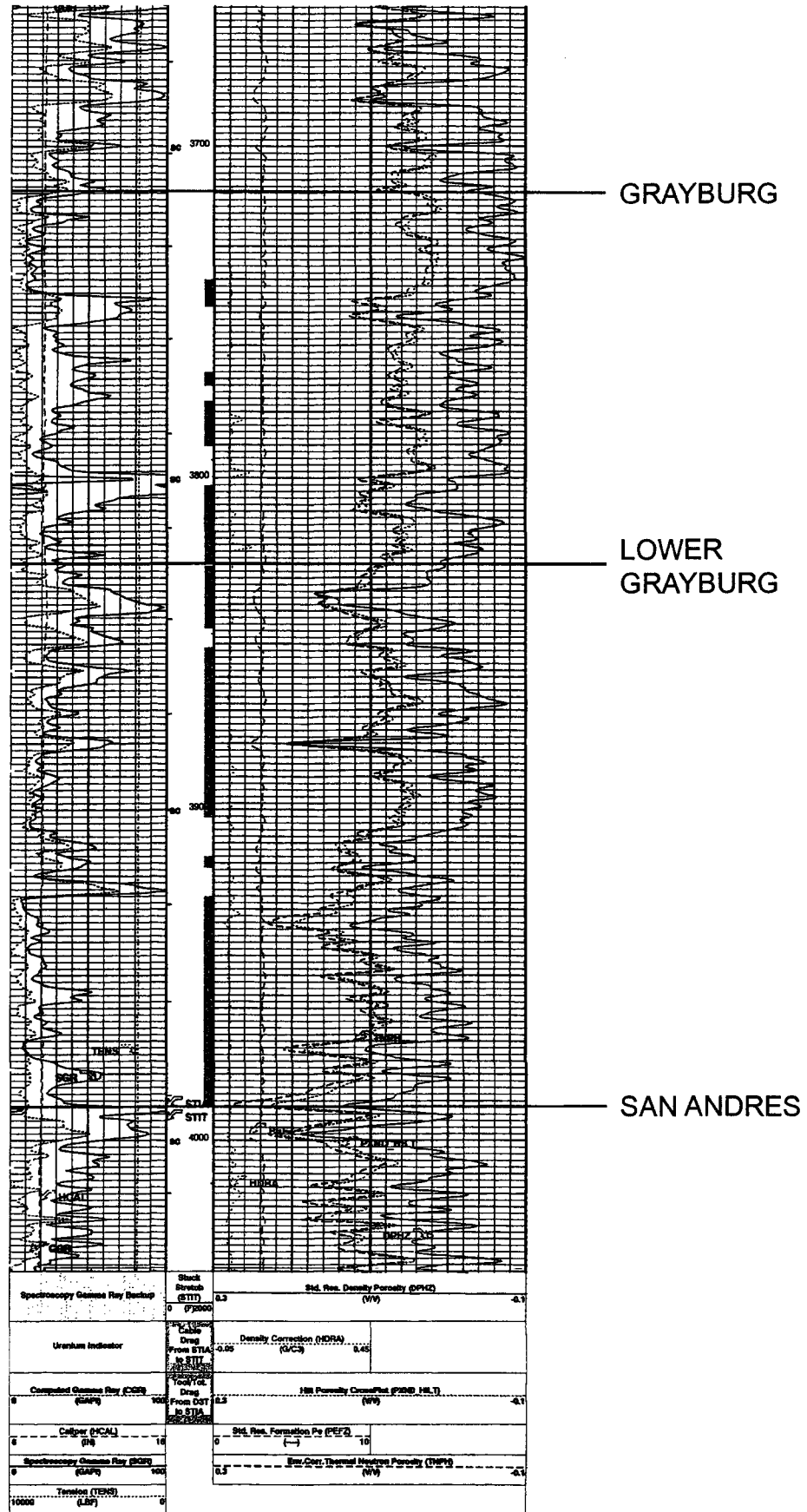
Lockhart A-17 #7:	70 MBO and 280 MMCFG
Lockhart A-17 #8:	91 MBO and 280 MMCFG
State C Tract 12 #13:	81 MBO and 320 MMCFG
DC Hardy #6:	61 MBO and 330 MMCFG

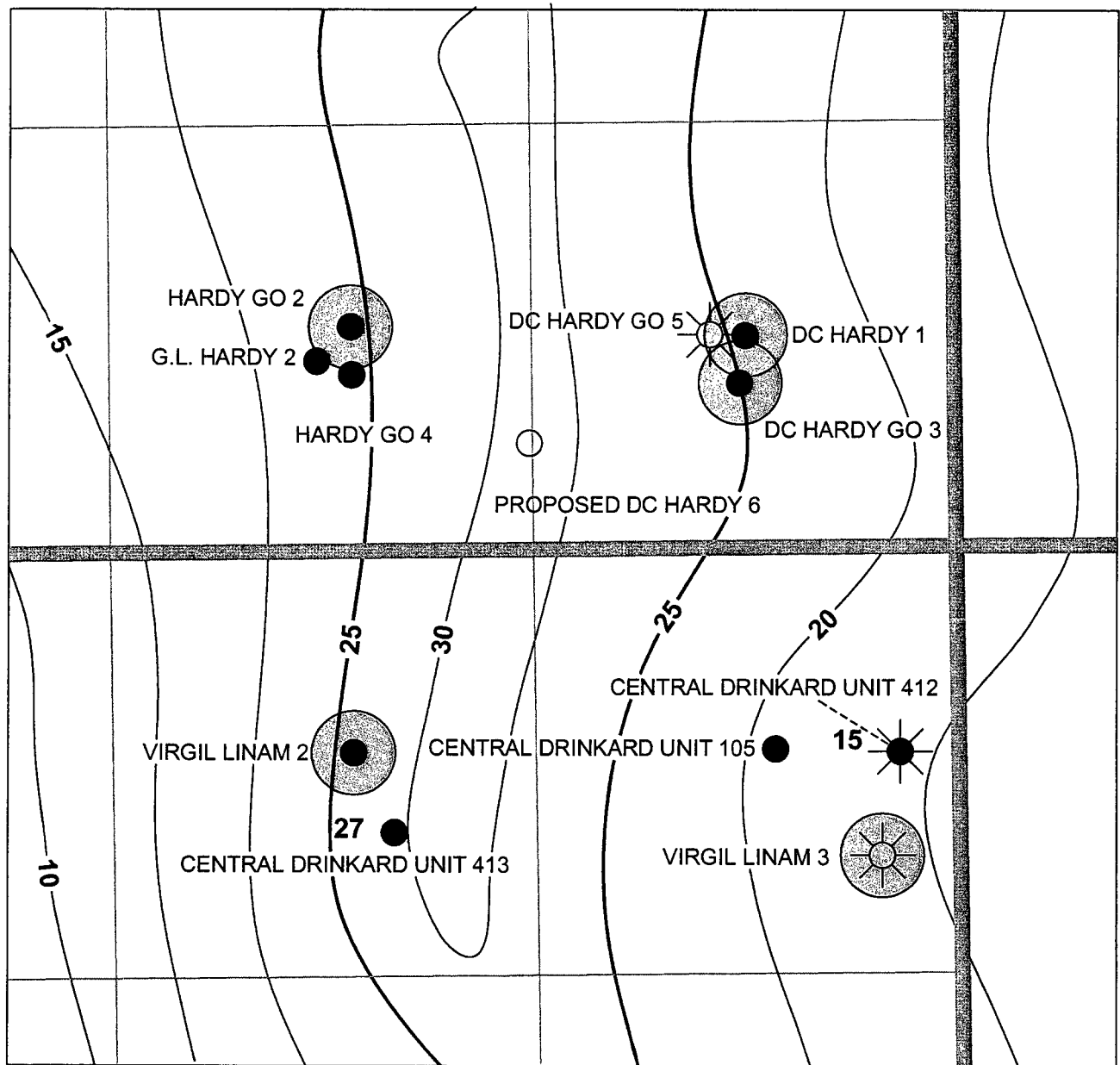
Reserves were determined volumetrically. Apache calculated the average porosity throughout the 'field', individually in both the Upper and Lower Grayburg, and then mapped it. Apache also estimated the current oil saturation throughout the 'field', individually in both the Upper and Lower Grayburg using a transform of the current water cut, and then mapped it. Feet of porosity (h) from the net pay maps, average porosity (PhiA), and oil saturation (So) grids were then multiplied in the computer to arrive at a hydrocarbon pore volume (HCPV) isopach map across the 'field'. HCPV for each reservoir at each location were estimated from the mathematically derived maps. Drainage area was assumed to be 29 acres, formation volume factor was assumed to be 1.38, and recovery factor was assumed to be 15% for each reservoir at each location. Estimated reserves in each reservoir were then reduced based upon distance to and estimated reserves, by reservoir, of productive offsets. Reserves predicted in each well are the sum of the Upper and Lower Grayburg estimates.

The locations requested are those with the greatest estimated ultimate recoveries. Moving away from the proposed location of any well will result in lower predicted reserves.



APACHE CORP.
STATE "C" TRACT 12 11
 Sec. 16 T21S R37E
 LEA COUNTY, NEW MEXICO



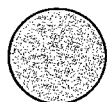


POSTED WELL DATA

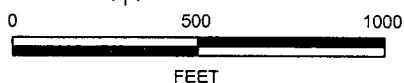
UPPER GRAYBURG PAY

WELL SYMBOLS

- Location Only
- Oil Well
- ★ Oil & Gas Well



U. GRAYBURG PRODUCER



TWO WARREN PLACE, SUITE 1500
6120 SOUTH YALE
TULSA, OKLAHOMA 74136-4224

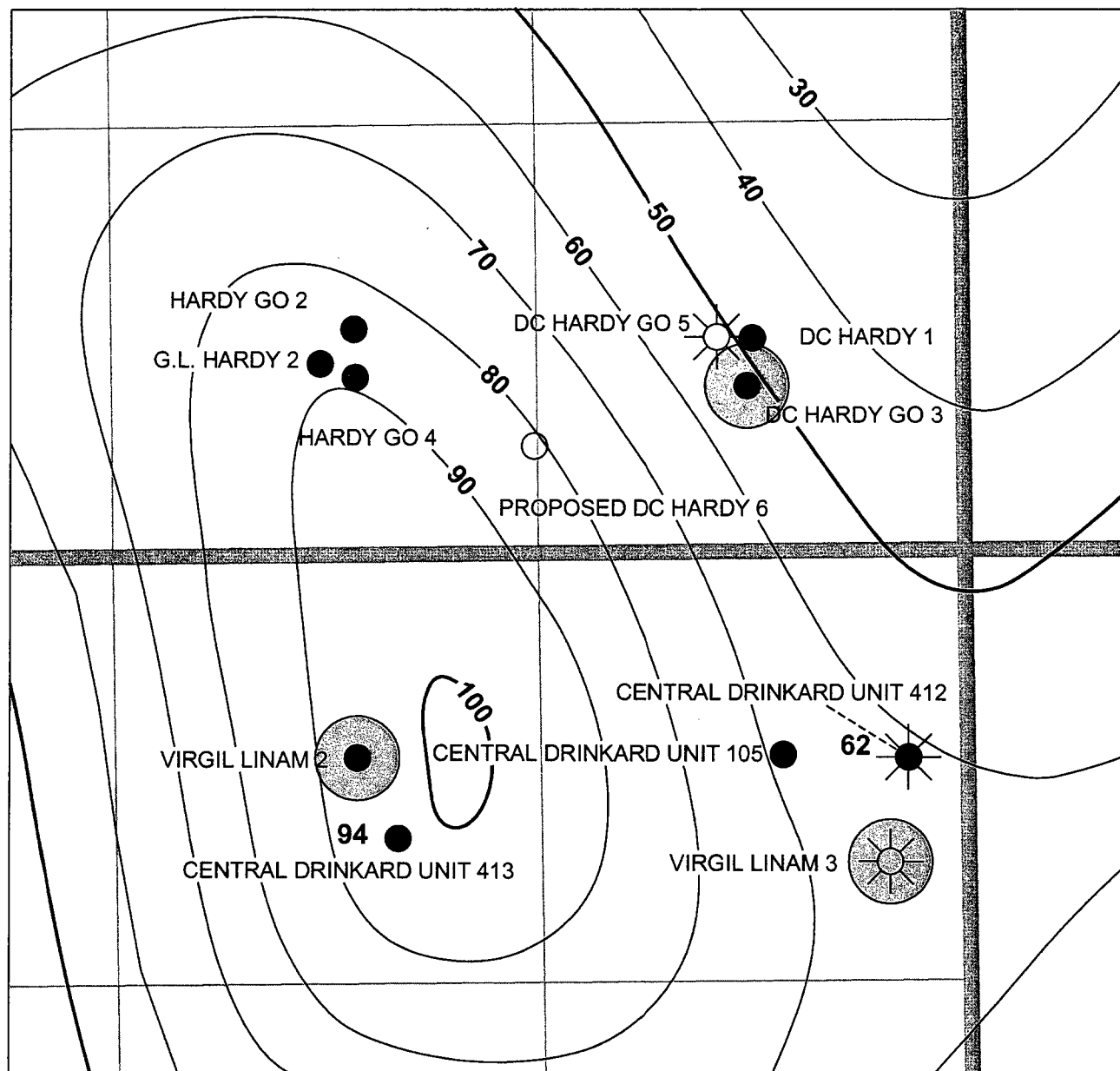
D.C. HARDY #6

SEC. 20-T21S-R37E
LEA COUNTY, NEW MEXICO

EXHIBIT 5
UPPER GRAYBURG PAY
CUTOFF: 6% DOLOMITE

DATE: 12-16-02

DWG: DC HARDY 6 EX-5 (CURTIS/OC-DNM)



POSTED WELL DATA

LOWER GRAYBURG PAY

WELL SYMBOLS

- Location Only
- Oil Well
- ⊛ Oil & Gas Well



□ L. GRAYBURG PRODUCER



TWO WARREN PLACE, SUITE 1500
8120 SOUTH YALE
TULSA, OKLAHOMA 74138-4224

DC HARDY #6

SEC. 17-T21S-R37E
LEA COUNTY, NEW MEXICO

EXHIBIT 6

LOWER GRAYBURG PAY
CUTOFF: 6% DOLOMITE

DATE: 12-16-02

DWG: DC HARDY 6 EX-6 (CURTISOCD-NM)

NOTIFICATION LIST

Application of Apache Corporation for Administrative
Approval of an unorthodox well location:

D. C. Hardy # 6 Well
330' FSL & 1,330' FEL
Section 20, Township 21 South, Range 37 East, NMMP
Lea County, New Mexico

OFFSET OPERATORS, WORKING INTEREST OWNERS, ROYALTY OWNER

Apache Corporation
Two Warren Place, Suite 1500
6120 South Yale Avenue
Tulsa, Oklahoma 74136

Elks National Foundation
2750 Lake View Ave.
Chicago, IL 60614-1806

Roy G. Barton Jr.
1919 N. Turner St.
Hobbs, NM 88241-2712

Ronald J. Byers
2902 Stratford Dr.
Austin, TX 78746-4629

J. E. Simmons
Norwest Bank TX NA Trustee
P. O. Box 5383
Denver, CO 80217

Timothy Leonard
P. O. Box 2625
Eagle Pass, TX 78853

Beulah H. Simmons
Norwest Bank TX NA Trustee
P. O. Box 5383
Denver, CO 80217

Norma J. Barton
P. O. Box 728
Hobbs, NM 88241

Roy G. Sr. & Opal Barton Rev. Tr.
1919 N. Turner St.
Hobbs, NM 88240-2712

Penn Brothers, Inc.
3868 Oak Lawn Suite 1216
Dallas, TX 75219

Petrotiger Muirfield Ltd.
P. O. Box 3166
Tulsa, OK 74101-3166

Robert J. Leonard
P. O. Box 400
Roswell, NM 88202-0400

Shattuck St. Marys Schools
P. O. Box 218
Faribault, MN 55021-0218

New Mexico Boys Ranch Inc.
6209 Hendrix NE
Albuquerque, NM 87110

Boys Club of America
230 W. Peachtree St. NW
Atlanta, GA 30309-3404

Velma Hardin
Unclaimed Property Section
P. O. Box 12019
Austin, TX 78711-2019

Jennifer Louise Stieren
P. O. Box 791225
San Antonio, TX 78279

Tortuga Oil & Gas Inc.
Two Turtle Creek Village
3838 Oak Lawn, Suite 1216
Dallas, TX 75219

Howhatan and Beverly Carter
Box 328
Fort Sumner, NM 88119

James Virgil Linam Trust
P. O. Box 5383
Denver, CO 80217

Children's Hospitals for Children
P. O. Box 31169
Tampa, FL 33611-3116

Edmund M. Longcope
400 W. Hopkin St., Suite 203
San Marcos, TX 78666-4462

Charles S. Longcope Jr.
57 Joyce Way
Dallas, TX 75225-1730

F. O. Long Estate P. O.
Box 840738
Dallas, TX 75284-0738

EXHIBIT
7

P. O. Box 951027
Dallas, TX 75396-1027

Mrs. Exor Pfouts
Address Unknown

Molly Michele Azopardi
P. O. Box 620
Wimberly, TX 78676

Anderson Carter
Box 998
Las Cruces, NM 88004

Thelma A. Webber Living Trust
P. O. Box 743
Hobbs, NM 88240

University of N. Mexico Regents
Scholes Hall Room 251
Albuquerque, NM 87131

Nancy E. Penson
1201 Elm St. #4255
Dallas, TX 75270

Hart Revocable Trust
5310 Harvest Hill Suite 288 LB 108
Dallas, TX 75230

Wm Kyle Adams Testamentary Trs.
1717 E. Tate
Brownfield, TX 79316

Pauline A. Adams
1717 E. Tate
Brownfield, TX 79316

Tom L. Adams
1202 East Hams
Brownfield, TX 79316

Mildred Adams
1112 Pecos Drive
Brownfield, TX 79316

Mary Nell Royer
948 Wiggins Parkway Apt. #315
Mesquite, TX 75150

Michael Ray Paddack
1954 Sandalwood
Fort Collins, CO 80526

Gary Lee Paddack
500 SE County Rd.
Ada, OK 74820

Georgia Ann Stieren
P. O. Box 791225
San Antonio, TX 78279

Red River Royalties LP
P. O. Box 5040
Austin, TX 78762-5040

Kay Longcope
216 Bonniview
Austin, TX 78704

Raynard S. Makin Jr.
393 12th Ave.
Indian Rock Beach, FL 33785

Royalty Suspense Fund-Texaco Acq.
Address Unknown

John D. Wrather
P. O. Box 2272
Longview, TX 75606

Michael Andrew Stieren
P. O. Box 791225
San Antonio, TX 78279

Roger F. Makin
100 Rio Vista Place #109
Santa Fe, NM 87501

Allie M. Lee Trust
P. O. Box 5383
Denver, CO 80217

CMD :
OG5SECT

ONGARD
INQUIRE LAND BY SECTION

01/07/03 15:35:29
OGOMES -TQGJ
PAGE NO: 1

Sec : 20 Twp : 21S Rng : 37E Section Type : NORMAL

D 40.00	C 40.00	B 40.00	A 40.00
Federal owned	Fee owned	Fee owned	Fee owned
A	A A	A A A	A
E 40.00	F 40.00	G 40.00	H 40.00
Fee owned	Fee owned	Fee owned	Fee owned
A A	A A	A	A

PF01 HELP PF02 PF03 EXIT PF04 GoTo PF05 PF06
PF07 BKWD PF08 FWD PF09 PRINT PF10 SDIV PF11 PF12

CMD :
OG5SECT

ONGARD
INQUIRE LAND BY SECTION

01/07/03 15:35:33
OGOMES -TQGJ
PAGE NO: 2

Sec : 20 Twp : 21S Rng : 37E Section Type : NORMAL

L 40.00	K 40.00	J 40.00	I 40.00
Fee owned	Fee owned	Fee owned	Fee owned
A	A	A	A A
M 40.00	N 40.00	O 40.00	P 40.00
Fee owned	Fee owned	Fee owned	Fee owned
A	A A	A A	A A

PF01 HELP
PF07 BKWD

PF02
PF08 FWD

PF03 EXIT
PF09 PRINT

PF04 GoTo
PF10 SDIV

PF05
PF11

PF06
PF12

1970

SOUTHEASTERN NEW MEXICO

I N D E X

<u>VOLUME I</u>	<u>PAGE</u>
ACTIVITY DATA BY COUNTY AND POOL	I
MONTHLY, ANNUAL AND CUMULATIVE OIL, GAS AND WATER PRODUCTION BY COUNTY	XVII
MONTHLY, ANNUAL AND CUMULATIVE OIL, GAS AND WATER BY POOL	XVII
MONTHLY, ANNUAL AND CUMULATIVE DRY GAS AND DISTILLATE BY POOL	XXX
MONTHLY, ANNUAL AND CUMULATIVE OIL, GAS AND WATER BY OPERATOR	1-425
MONTHLY, ANNUAL AND CUMULATIVE DRY GAS AND DISTILLATE BY OPERATOR	426-466
EXTRACTION PLANTS	467-473
CARBON BLACK PLANTS	473
SUMMARY OF ALLOCATION	473
BOTTOM HOLE PRESSURES	474-483
ANNUAL 72-HOUR GAS WELL SHUT-IN PRESSURES	484-502

ABBREVIATIONS IN METHOD OF PRODUCTION COLUMN

A ABANDONED	N NOT CONNECTED
D DEAD	P PUMPING
F FLOWING	S SHUT-IN
G GAS LIFT	T TEMPORARILY ABANDONED
I INPUT	X PERMANENTLY ABANDONED
U TEMPORARILY ABANDONED AND REPORTS DISCONTINUED BY OPERATOR	

LAND TYPE CODES

P PATENT
F FEDERAL
S STATE
U UNIT
C COMMUNITIZATION

WELL S T R	JAN	FEB	MAR	APRIL	MAY	JUNE	JULY	AUG	SEPT	OCT	NOV	DEC	YR-PROD MP	ACCUM

M H TURNER 2K2921S37E OIL	25	58	P 29										112P	82843
GAS	283	222	55	113	163	50							926	
WAT	13	29	15										57	
COMPANY TOTAL	171	157	157	190	123	104	100	163	89	110	119	99	1582	478182
GAS	2742	2741	3254	3062	2857	2611	2621	2228	2437	2405	2380	2566	31904	
WAT	77	74	62	76	51	19	21	49	36	39	72	64	626	

CAMPBELL AND HEDRICK ALEXANDER 1L 721S37E OIL	27	42	P 27	9	30	25	11	55	41	28	16		311F	20608
GAS	2500	3673	2144	3910	3897	3854	2149	3258	3381	3599	2807	3378	38550	
WAT				22							34	24	80	
M E LEE 1C2021S37E OIL	145	61	P 58	142	99	113	105	124	81	129	111	133	1301P	38197
GAS	3711	3549	3899	3494	3548	3060	2815	987	4051	4081	3267	3280	39742	
WAT													15	
4F2021S37E OIL	42	18	16	41	28	32	30	36	23	37	32	4044	49203	10794
GAS	4595	4395	4828	4326	4392	3788	3486	1221	5015	5027	4044	4061	49203	
WAT	17		10	12	15	39	13		15	27	38		186	
COMPANY TOTAL	214	121	101	192	157	170	146	215	145	194	159	171	1985	69599
GAS	10806	11617	10871	11730	11837	10702	8450	5466	12447	12732	10118	10713	127495	
WAT	17		10	34	15	39	13		15	27	72	39	281	

CARPER HANSON ELLIOTT 10 622S37E OIL PLUGGED AND ABANDONED 1967														2451

CITIES SERVICE OIL COMPANY BRUNSON C 9J 322S37E OIL			P 1106	2332	2084	1422	1925	2249	1871	1545	1527	1398	17508P	17508
GAS		49	84	114	42	464	1613	2574	1880	1689	3984	3814	16406	
WAT		148	7742	16324	1282	875	1185	1384	1151	951	370	339	31946	
100 322S37E OIL		343			1143	1427	1427	2249	1872	1546	1527	1398	13082F	13082
GAS					152	95	128	150	125	103	449	411	1613	
WAT													11087F	11087
11P 322S37E OIL						569	1926	2250	1872	1545	1527	1398	13632	
GAS						226	1960	2452	1791	1608	2859	2736	13632	
WAT						218	738	752	628	647	593	593	8231F	8231
12I 322S37E OIL								1887	1872	1546	1527	1399	12035	
GAS													3603	
WAT								1263	811	669	449	411		
COMPANY TOTAL		49	1106	2332	3227	3413	5776	8635	7487	6182	6108	5593	49908	49908
GAS		148	84	114	84	2251	8994	13679	12922	11609	12642	12103	74630	
WAT		343	7742	16324	1434	1188	2051	3551	2715	2241	1915	1754	41258	

CONTINENTAL OIL COMPANY CLINE A 15 ELLIOTT 1C1523S37E OIL RECOMPLETED TO LANGLIE MATTIX SEVEN RIVERS			F 141	142	120	134	130	94	101	104	90	88	1411F	772
GAS		178	89	942	943	1130	1286	761	573	612	470	781	10348	89018
WAT		817	967	56	57	48	24	63	67	69	36	35	630	
201522S37E OIL		71	22	57	48	57	52	63	67	69	36	35	630	
GAS		788	442	554	698	399	648	501	507	499	408	326	6239	88607
WAT					24	29	26	32	34	35	18	18	216	

ELLIOTT B 9 1E 322S37E OIL PLUGGED AND ABANDONED 1942			F 122	123	99	109	107	110	100	121	117	108	1348F	14396
LOCKHART 1L 1721S37E OIL		124	108	122	123	99	109	110	100	121	117	108	1348F	83075
GAS		3371	3215	3779	4343	3163	2928	2932	2887	3107	3087	2976	39567	
COMPANY TOTAL		373	241	320	328	267	300	289	268	295	243	231	3422	275868
GAS		4976	4624	5275	5420	5872	5097	4495	4200	4127	3882	4297	56154	
WAT		71	22	56	57	72	83	78	95	104	54	53	846	

MILLARD DECK R E COLE 1J1622S37E OIL		101	197	S 120	111	243	86	145	140	211	201	220	2056P	27755
GAS		2790	2450	2798	2861	2718	2644	2775	3003	2724	2652	2417	32296	
WAT		21	17	1	9		9	10	11	10	12	13	144	
R E COLE A 1K1622S37E OIL		52	151	S 57	101	201	100	138	141	203	213	235	1882P	16664
GAS		2296	2024	2275	1803	1308	1970	1682	1447	1351	1830	1693	21127	
WAT		159	123	15	13	17	12	21	29	27	27	29	490	
COMPANY TOTAL		153	348	177	212	444	186	283	281	414	414	455	3938	44419
GAS		5086	4472	5015	4264	4028	4612	4437	4450	4075	4482	4110	53423	
WAT		176	140	26	22	28	21	31	40	37	39	35	834	

GETTY OIL COMPANY D C HARDY 1P2021S37E OIL		31		P 80	80	79	79	73	75	66				
GAS		463	10	983	1184	1329	1212	1095	1002	878	1443	1103	966P	108271
202021S37E OIL				31	30	15	15	15	15	15	8	8	229	
COMPANY TOTAL		31	10											
GAS		463	148											
WAT														

GULF OIL CORPORATION J N CARSON NCT A 1K2821S37E OIL		91	81	P 80	80	79	79	73	75	66				
GAS		1230	1016	983	1184	1329	1212	1095	1002	878	1443	1103	966P	108271
WAT		31	10	31	30	15	15	15	15	15	8	8	229	
J N CARSON NCT 1A3321S37E OIL				P 31										
GAS														
6P2821S37E OIL		201	224	248	239	199	186	148	174	247	149	114	2311P	68553
GAS		2578	2381	2670	12809	3071	14987	1512	1281	2505	1274	1057	47487P	13859
WAT		15	10	10	10		2	2	2	2	2	2	61	40250
R E COLE NCT A 1P1622S37E OIL		1287	1337	S 30	626	690	2688		553				150P	143822
GAS													8532	
2L1622S37E OIL														
GAS		123	108	82	165	154	2239	145	127	181	100	100	1556P	43414
WAT		880	868	64	1148	1181		1170	1118	1378	1324	1614	14935	104430

CENTRAL DRINKARD UNIT 108H2921S37E OIL RECOMPLETED TO DRINKARD														62098
116L2821S37E OIL RECOMPLETED TO DRINKARD														62089
117L2921S37E OIL RECOMPLETED TO DRINKARD														65770
118L2921S37E OIL RECOMPLETED TO DRINKARD														19317
123M2821S37E OIL RECOMPLETED TO DRINKARD														43220
129C3321S37E OIL RECOMPLETED TO DRINKARD														34857
130D3321S37E OIL RECOMPLETED TO DRINKARD														94099
141E3321S37E OIL RECOMPLETED TO DRINKARD														36870
148L3321S37E OIL RECOMPLETED TO DRINKARD														27963
154M3321S37E OIL RECOMPLETED TO DRINKARD														33414
157P3321S37E OIL RECOMPLETED TO DRINKARD														29664
EUNICE KING 1E2821S37E OIL		246	223	P 247	238	246	238	238	238	246	235	245	2868P	136094
GAS		1448	1396	1641	1688	1915	4909	1249	1253	1282	1036	1106	20654	
WAT		124	112	124	120	123	120	120	120	120	120	120	1443	
2D2821S37E OIL CONVERTED TO SWD														
GAS		67	56	62	60	62	60	62	60	62	58	62	725P	50163
WAT		1093	1013	1192	1226	1301	3201	907	92	793	784	860	14322P	85480
6D2821S37E OIL														
GAS		123	111	124	120	123	119	120	123	120	117	123	1446P	25301
WAT		312	301	354	364	413	951	341	373	369	299	455	4792	34879
1182821S37E OIL														
GAS		58	56	58	60	62	60	62	60	62	60	62	722	
WAT		278	252	279	269	278	224	224	279	26				

Lea County Operators Committee

HOBBS, NEW MEXICO

1937 ANNUAL REPORT

LEA COUNTY OPERATORS

GENTLEMEN:

Contained herein is the Annual Report of the
Proration Office and the Engineers Advisory Committee.
This report covers in detail drilling and production data
for all fields in Lea County for 1937. A general tabulation
is included covering production and drilling figures up to
January 1, 1938.

Respectfully submitted,

Glenn Staley

LEASE	WELL UNIT	S.T. & R.	JAN.	FEB.	MAR.	APR.	MAY	JUNE	JULY	AUG.	SEP.	OCT.	NOV.	DEC.	ACCUM. TOTAL
Hare	1-M	33-21-37													
AMERADA PET. CORP.															
Hardy	1-H	29-21-37	1308	1122	1111	1107	720	1201	783	827	1220	777	722	1062	23865
BARNESDALE OIL CO.															
Turner	1-M	29-21-37													
"	2-A	"	1745	2183											
CLOWER															
Hawk	1-R	5-21-37													
Lockhart	1-L	17-21-37													
Wantz	1-M	21-21-37													
CONTINENTAL OIL CO.															
Hardy	1-P	20-21-37	756	474	861	855	923	459	632	1027	1019	1626	1635	1500	5780
"	2-O	"	407		430	883		465	862	430	822	1027	618	726	4220
GETTY OIL CO.															
Carson	1-K	28-21-37													
Hardy	1-N	20-21-36													
King	1-E	28-21-37	1290	1878	1743	1450	1830	1524	399	750	1248	1113	1082	846	10191
"	2-D	"													
"	3-F	"													
Mattern	1-T	30-21-37													
"	1-I	18-21-37													
McCormick	1-A	32-21-37	2108	1827	1862	1663	1918	2000	1728	2158	1810	1771	1678	1763	3477
"	2-B	"													
GULF OIL CORP.															
Carson	1-K	28-21-37													
Hardy	1-N	20-21-36													
King	1-E	28-21-37	1290	1878	1743	1450	1830	1524	399	750	1248	1113	1082	846	10191
"	2-D	"													
"	3-F	"													
Mattern	1-T	30-21-37													
"	1-I	18-21-37													
McCormick	1-A	32-21-37	2108	1827	1862	1663	1918	2000	1728	2158	1810	1771	1678	1763	3477
"	2-B	"													
GULF OIL CORP.															
Carson	1-K	28-21-37													
Hardy	1-N	20-21-36													
King	1-E	28-21-37	1290	1878	1743	1450	1830	1524	399	750	1248	1113	1082	846	10191
"	2-D	"													
"	3-F	"													
Mattern	1-T	30-21-37													
"	1-I	18-21-37													
McCormick	1-A	32-21-37	2108	1827	1862	1663	1918	2000	1728	2158	1810	1771	1678	1763	3477
"	2-B	"													
GULF OIL CORP.															
Carson	1-K	28-21-37													
Hardy	1-N	20-21-36													
King	1-E	28-21-37	1290	1878	1743	1450	1830	1524	399	750	1248	1113	1082	846	10191
"	2-D	"													
"	3-F	"													
Mattern	1-T	30-21-37													
"	1-I	18-21-37													
McCormick	1-A	32-21-37	2108	1827	1862	1663	1918	2000	1728	2158	1810	1771	1678	1763	3477
"	2-B	"													
GULF OIL CORP.															
Carson	1-K	28-21-37													
Hardy	1-N	20-21-36													
King	1-E	28-21-37	1290	1878	1743	1450	1830	1524	399	750	1248	1113	1082	846	10191
"	2-D	"													
"	3-F	"													
Mattern	1-T	30-21-37													
"	1-I	18-21-37													
McCormick	1-A	32-21-37	2108	1827	1862	1663	1918	2000	1728	2158	1810	1771	1678	1763	3477
"	2-B	"													
GULF OIL CORP.															
Carson	1-K	28-21-37													
Hardy	1-N	20-21-36													
King	1-E	28-21-37	1290	1878	1743	1450	1830	1524	399	750	1248	1113	1082	846	10191
"	2-D	"													
"	3-F	"													
Mattern	1-T	30-21-37													
"	1-I	18-21-37													
McCormick	1-A	32-21-37	2108	1827	1862	1663	1918	2000	1728	2158	1810	1771	1678	1763	3477
"	2-B	"													
GULF OIL CORP.															
Carson	1-K	28-21-37													
Hardy	1-N	20-21-36													
King	1-E	28-21-37	1290	1878	1743	1450	1830	1524	399	750	1248	1113	1082	846	10191
"	2-D	"													
"	3-F	"													
Mattern	1-T	30-21-37													
"	1-I	18-21-37													
McCormick	1-A	32-21-37	2108	1827	1862	1663	1918	2000	1728	2158	1810	1771	1678	1763	3477
"	2-B	"													
GULF OIL CORP.															
Carson	1-K	28-21-37													
Hardy	1-N	20-21-36													
King	1-E	28-21-37	1290	1878	1743	1450	1830	1524	399	750	1248	1113	1082	846	10191
"	2-D	"													
"	3-F	"													
Mattern	1-T	30-21-37													
"	1-I	18-21-37													
McCormick	1-A	32-21-37	2108	1827	1862	1663	1918	2000	1728	2158	1810	1771	1678	1763	3477
"	2-B	"													
GULF OIL CORP.															
Carson	1-K	28-21-37													
Hardy	1-N	20-21-36													
King	1-E	28-21-37	1290	1878	1743	1450	1830	1524	399	750	1248	1113	1082	846	10191
"	2-D	"													
"	3-F	"													
Mattern	1-T	30-21-37													
"	1-I	18-21-37													
McCormick	1-A	32-21-37	2108	1827	1862	1663	1918	2000	1728	2158	1810	1771	1678	1763	3477
"	2-B	"													
GULF OIL CORP.															
Carson	1-K	28-21-37													
Hardy	1-N	20-21-36													
King	1-E	28-21-37	1290	1878	1743	1450	1830	1524	399	750	1248	1113	1082	846	10191
"	2-D	"													
"	3-F	"													
Mattern	1-T	30-21-37													
"	1-I	18-21-37													
McCormick	1-A	32-21-37	2108	1827	1862	1663	1918	2000	1728	2158	1810	1771	1678	1763	3477
"	2-B	"													
GULF OIL CORP.															
Carson	1-K	28-21-37													
Hardy	1-N	20-21-36													
King	1-E	28-21-37	1290	1878	1743	1450	1830	1524	399	750	1248	1113	1082	846	10191
"	2-D	"													
"	3-F	"													
Mattern	1-T	30-21-37													

CMD :
OG6IWCM

ONGARD
INQUIRE WELL COMPLETIONS

01/07/03 15:38:54
OGOMES -TQGJ

API Well No : 30 25 6690 Eff Date : 06-10-1999 WC Status : A
Pool Idn : 50350 PENROSE SKELLY;GRAYBURG
OGRID Idn : 873 APACHE CORP
Prop Idn : 16814 D C HARDY

Well No : 003
GL Elevation: 3496

	U/L	Sec	Township	Range	North/South	East/West	Prop/Act (P/A)
	---	---	-----	-----	-----	-----	-----
B.H. Locn : P	20	21S	37E	FTG	510 F S	FTG 660 F E	A
Lot Identifier:							
Dedicated Acre: 40.00							
Lease Type : P							
Type of consolidation (Comm, Unit, Forced Pooling - C/U/F/O) :							

PF01 HELP	PF02	PF03 EXIT	PF04 GoTo	PF05	PF06
PF07	PF08	PF09	PF10 NEXT-WC	PF11 HISTORY	PF12 NXTREC

CMD : ONGARD 01/07/03 15:39:00
OG6ACRE C102-DEDICATE ACREAGE OGOMES -TQGJ
Page No : 1

API Well No : 30 25 6690 Eff Date : 09-28-1993
Pool Idn : 50350 PENROSE SKELLY;GRAYBURG
Prop Idn : 16814 D C HARDY Well No : 003
Spacing Unit : 39139 OCD Order : Simultaneous Dedication:
Sect/Twp/Rng : 20 21S 37E Acreage : 40.00 Revised C102? (Y/N) :
Dedicated Land:

S Base U/L Sec Twp Rng Acreage L/W Ownership Lot Idn

P 20 21S 37E 40.00 N FE

E0005: Enter data to modify or PF keys to scroll

PF01 HELP PF02 PF03 EXIT PF04 GoTo PF05 PF06 CONFIRM
PF07 BKWD PF08 FWD PF09 PF10 LAND PF11 NXTSEC PF12 RECONF

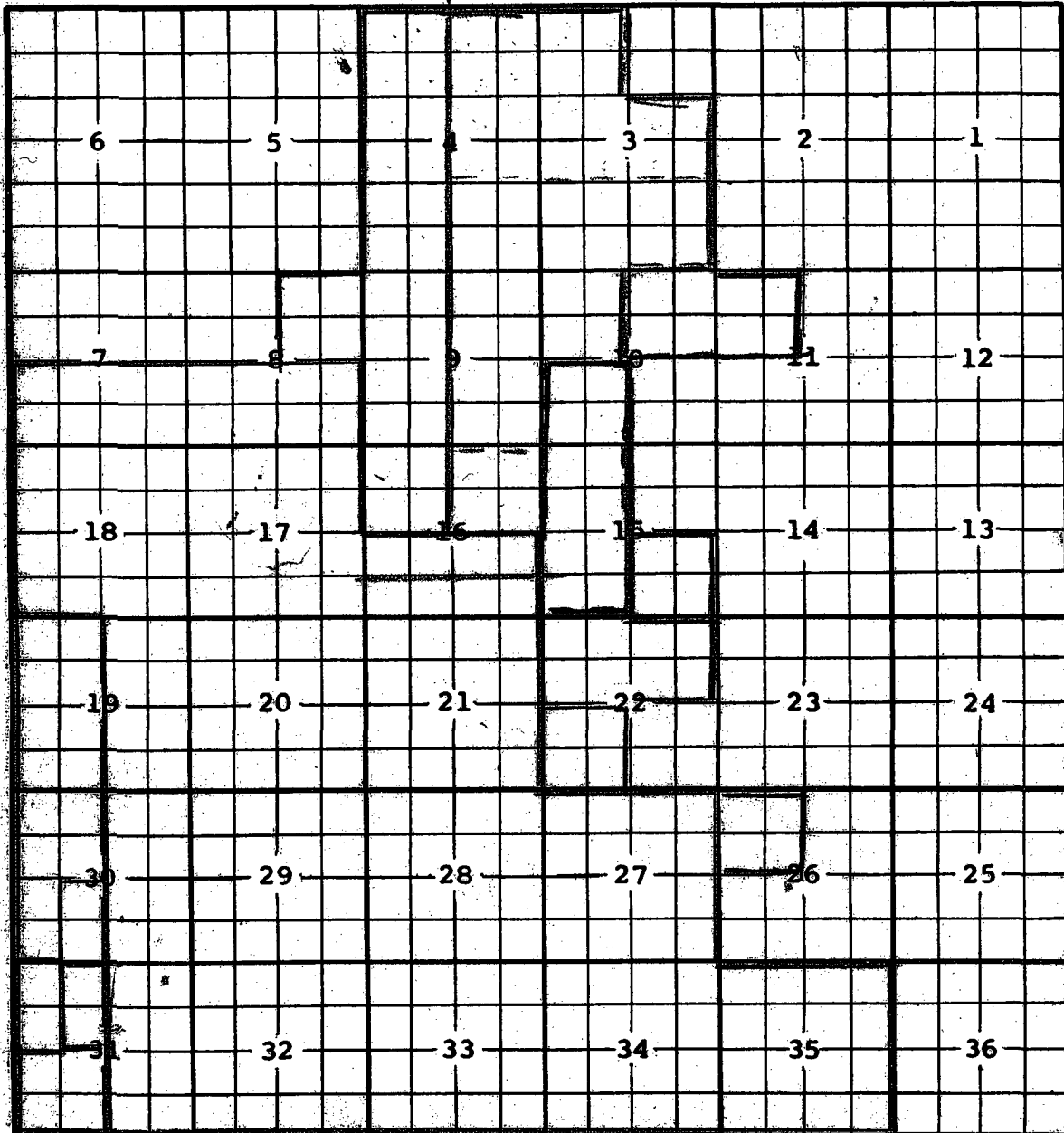
Well No : 002
GL Elevation: 3497

M0025: Enter PF keys to scroll

```
PF01 HELP      PF02      PF03 EXIT      PF04 GoTo      PF05      PF06
PF07      PF08      PF09      PF10 NEXT-WC PF11 HISTORY PF12 NXTREC
```


COUNTY LeaPOOL Penrose-SkellyTOWNSHIP 21 SouthRANGE 37 East

NMPM



Description: $\frac{S}{2}$ Sec. 7; $\frac{S}{2}$ Sec. 8; $\frac{S}{2}$ Sec. 16; All Sec. 17 & 18; $\frac{E}{2}$ Sec. 19;
 All Sec. 20, 21, 27, 28 & 29; $\frac{E}{2}$ Sec. 30; $\frac{E}{2}$ Sec. 31; All Sec. 32 thru 35; Vertical
 limits contracted to Grayburg formation only (R-767-A, 4-1-56)

Ext: $\frac{W}{4}$ Sec. 4; $\frac{NE}{4}$ Sec. 8; $\frac{W}{4}$ Sec. 9; $\frac{NW}{4}$ Sec. 16 (R-947, 1-30-57) - $\frac{E}{2}$ $\frac{NW}{4}$ Sec. 31 (R-1017, 6-18-57)
 - $\frac{E}{2}$ $\frac{SW}{4}$ Sec. 30 (R-1105, 12-30-57) - $\frac{W}{2}$ Sec. 19; $\frac{NW}{4}$ & $\frac{W}{2}$ $\frac{SW}{4}$ Sec. 30 (R-1129, 2-20-58)
 $\frac{SW}{4}$ Sec. 31 (R-1143, 3-25-58) - $\frac{W}{2}$ $\frac{NW}{4}$ Sec. 31 (R-1312, 1-1-59)

Ext: $\frac{SW}{4}$ Sec. 22 (R-7396, 12-8-83) Ext: $\frac{SW}{4}$ Sec. 10, $\frac{N}{2}$ Sec. 15, $\frac{NW}{4}$ Sec. 26 (R-10091,
 3-28-94) Ext: $\frac{N}{2}$ Sec. 22 (R-10776, 2-28-97)

Ext: Lots 3, 4, 5, 6, 9, 10, 11, 12, 13, 14, 15, 16 and $\frac{S}{2}$ Sec. 3, Lots 1, 2, 7, 8, 9, 10, 15, 16 and $\frac{SE}{4}$ Sec. 4, $\frac{E}{2}$ Sec. 9,
 $\frac{NW}{4}$ Sec. 10, $\frac{SE}{4}$ Sec. 15, $\frac{NE}{4}$ Sec. 16 (R-11633, 8-10-01) Ext: $\frac{NE}{4}$ Sec. 10, $\frac{NW}{4}$ Sec. 11 (R-11788, 2-20-02)

EXON 4
IN# 085455
ELIOTT
TERRY 7230
"Wentz Pad"
ELIOTT
065525
TERRY
Wentz Pad

1	2	3	4	5	6	7	8	9	10	11	12	13	14	15	16	17	18	19	20	21	22	23	24	25	26	27	28	29	30	31	32	33	34	35	36	37	38	39	40	41	42	43	44	45	46	47	48	49	50	51	52	53	54	55	56	57	58	59	60	61	62	63	64	65	66	67	68	69	70	71	72	73	74	75	76	77	78	79	80	81	82	83	84	85	86	87	88	89	90	91	92	93	94	95	96	97	98	99	100
1	2	3	4	5	6	7	8	9	10	11	12	13	14	15	16	17	18	19	20	21	22	23	24	25	26	27	28	29	30	31	32	33	34	35	36	37	38	39	40	41	42	43	44	45	46	47	48	49	50	51	52	53	54	55	56	57	58	59	60	61	62	63	64	65	66	67	68	69	70	71	72	73	74	75	76	77	78	79	80	81	82	83	84	85	86	87	88	89	90	91	92	93	94	95	96	97	98	99	100

OIL CONSERVATION COMMISSION

P. O. BOX 2088

SANTA FE, NEW MEXICO

December 7, 1963

**Tidewater Oil Company
P. O. Box 249
Hobbs, New Mexico**

Attention: Mr. C. L. Wade

Administrative Order PC-289

Gentlemen:

Reference is made to your application dated October 27, 1963, for administrative approval of an exception to Rule 303 (a) of the Commission Rules and Regulations to permit the commingling of Drinkard and Panrosa Shelly production on your GO D. C. Hardy Lease which comprises the 6/2 SE/4 of Section 20, Township 21 South, Range 37 East, Lea County, New Mexico, allocating the production on the basis of periodic well tests. It is our understanding that the production from each pool is of marginal nature.

By the authority vested in me under the provisions of Rule 303 (b) of the Commission Rules and Regulations, you are hereby authorized to commingle the production from the aforesaid pools on said lease in the above-described manner. Provided, however, that the installation shall be operated in accordance with the provisions of the Commission Manual for the Installation and Operation of Commingling Facilities, and provided further, that you shall notify the Commission at such time as any well in either of the aforesaid pools is capable of top allowable production.

Very truly yours,

**A. L. FORSTER, Jr.
Secretary-Director**

ALP:DSW:eg

**cc: Oil Conservation Commission (with enclosure) - Hobbs
Oil & Gas Engineering Committee - Hobbs**



TIDEWATER OIL COMPANY

P. O. Box 249
Hobbs, New Mexico

October 27, 1965

MAIN OFFICE
OCT 28 AM 8 00

PC-289

New Mexico Oil Conservation Commission
P. O. Box 2088
Santa Fe, New Mexico

Attention: Mr. A. L. Porter, Jr.

Re: Administrative Approval to Commingle Production
from the Drinkard & Penrose Skelly Pools on
Tidewater's GO D. C. Hardy Lease, Units O & P
Section 20, T21S, R37E, Lea County, New Mexico

Gentlemen:

S/2 SE/4 20 21 37

Tidewater Oil Company respectfully requests approval to commingle oil produced from the Drinkard and Penrose Skelly Pools, Wells Nos. 2, 3 and 4 on its GO D. C. Hardy lease. Well No. 2 is a Penrose Skelly completion and Wells No. 3 and 4 produce from the Drinkard Pool. All three wells are marginal and physically incapable of producing top unit allowable.

In support of this application the following items are attached:

1. A tabulation of most recent production showing that average daily production over a 60 day period has been below top allowable for the subject pools.
2. A schematic diagram of the proposed commingling installation.
3. A plat showing the location of all wells on the GO D. C. Hardy lease and the pool from which each well is producing.

Royalty and working interest ownership are common for both pools. It is proposed to determine the production from each well and each pool from periodic well tests.

The hydrocarbon volume, value and gravity from each zone are as follows:

<u>Zone</u>	<u>Bbls./Day</u>	<u>API Gravity</u>	<u>Value \$</u>
Drinkard Pool	16	35.9	2.91
Penrose Skelly Pool	1	32.5	2.85

NMOCC - Santa Fe, N.M.
A. L. Porter, Jr.

(2)

10/27/65

The commingled production is expected to have a gravity of 35.6° API and the commercial value will be essentially the same as before.

Tidewater Oil Company respectfully requests approval to commingle oil production as described above in accordance with Commission Order No. R-2060 which revises Rules 303 and 309-B.

Very truly yours,

TIDEWATER OIL COMPANY

C. L. Wade
C. L. Wade
Area Superintendent

BMB/ep
Attachments

cc: NMOCC - Santa Fe (2)
Mr. R. H. Coe
Tidewater Oil Co.
Midland, Texas

TIDEWATER OIL COMPANY
GO D. C. HARDY LEASE

DRINKARD POOL - WELLS #3 & #4

Daily Production - Bbls. Oil

<u>Date</u>	<u>August</u>	<u>September</u>	<u>October</u>
1	27.07	10.81	32.43
2	5.42	16.21	32.43
3	27.07	5.40	8.12
4	10.83	32.41	10.82
5	21.65	5.41	35.19
6	5.40	5.41	13.53
7	27.03	32.47	9.47
8	21.62	27.06	8.12
9	16.21	5.41	35.18
10	10.81	0	18.94
11	21.62	25.67	10.82
12	21.62	24.34	5.41
13	2.70	8.12	32.47
14	18.95	8.12	21.64
15	10.82	29.78	
16	21.65	21.65	
17	21.65	5.41	
18	31.08	10.83	
19	24.36	32.48	
20	8.11	29.78	
21	8.11	10.82	
22	10.82	8.12	
23	21.65	27.07	
24	16.24	21.61	
25	27.06	6.76	
26	27.06	9.47	
27	27.06	32.48	
28	5.42	21.65	
29	21.61	6.76	
30	16.20	9.47	
31	<u>27.01</u>		

Daily Averages 18.19 16.37 19.61

PENROSE SKELLY POOL - WELL #2

Daily Production - Bbls. Oil

<u>August</u>	<u>September</u>	<u>October</u>
0	0	.83
1.66	1.66	.41
1.65	1.65	0
0	0	0
1.65	0	2.90
0	0	.82
0	1.65	0
0	.82	0
0	0	3.73
1.66	0	0
0	1.24	0
0	.82	0
0	0	1.65
1.65	0	.82
.82	2.90	
0	0	
0	0	
2.48	0	
.82	1.65	
0	0	
0	0	
0	0	
1.66	3.31	
0	0	
0	0	
0	0	
0	1.24	
.82	.41	
0	0	
0	0	
<u>1.66</u>		

.53 .58 .80

TIDEWATER OIL COMPANY

(80)



(SHUT IN)



D. C. HARDY

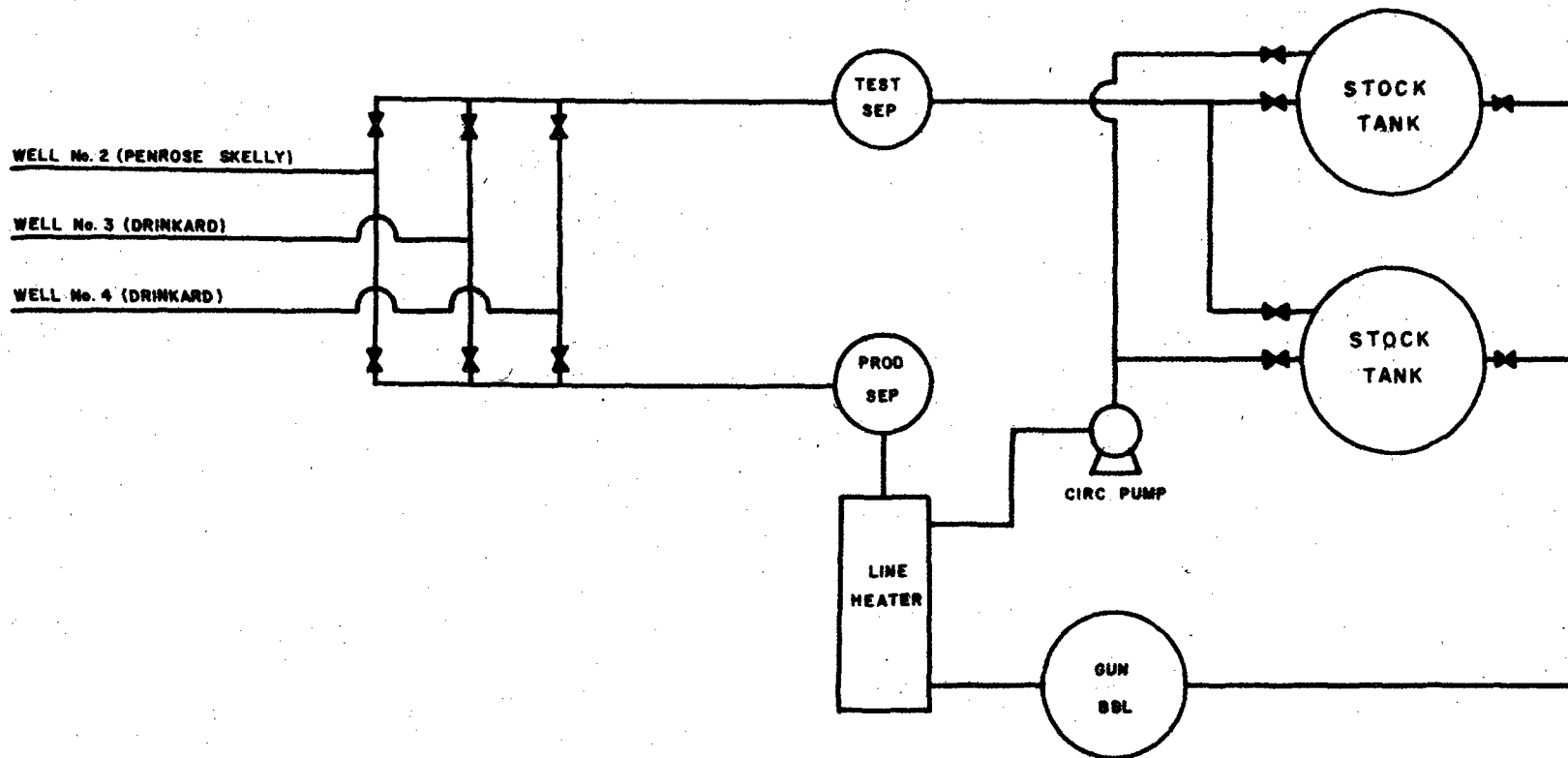
3/2 of SE/4 of Sec 20, T-21-S, R-37-E

● Blinbry Gas

● Drinkard

● Penrose Skelly

PROPOSED COMMINGLING FACILITIES
TIDEWATER OIL COMPANY
60 D. C. HARDY LEASE
LEA COUNTY, NEW MEXICO



DISTRICT I
P.O. Box 1980, Hobbs, NM 88240

DISTRICT II
P.O. Drawer DD, Artesia, NM 88210

DISTRICT III
1000 Rio Brazos Rd., Aztec, NM 87410

OIL CONSERVATION DIVISION

P.O. Box 2088
Santa Fe, New Mexico 87504-2088

WELL API NO.	30-025-06691
5. Indicate Type of Lease	STATE <input type="checkbox"/> FEE <input checked="" type="checkbox"/>
6. State Oil & Gas Lease No.	

SUNDRY NOTICES AND REPORTS ON WELLS
(DO NOT USE THIS FORM FOR PROPOSALS TO DRILL OR TO DEEPEN OR PLUG BACK TO A DIFFERENT RESERVOIR. USE "APPLICATION FOR PERMIT" (FORM C-101) FOR SUCH PROPOSALS.)

1. Type of Well:
OIL WELL ☒ GAS WELL ☐ OTHER ☐

2. Name of Operator
Texaco Exploration and Production Inc.

3. Address of Operator
P.O. Box 730 Hobbs, New Mexico 88240

4. Well Location
Unit Letter O : 660 Feet From The South Line and 1980 Feet From The East Line

Section 20 Township 21-S Range 37-E NMPM Lea County

10. Elevation (Show whether DF, RKB, RT, GR, etc.)
3497' GL

11. Check Appropriate Box to Indicate Nature of Notice, Report, or Other Data	
NOTICE OF INTENTION TO:	SUBSEQUENT REPORT OF:
PERFORM REMEDIAL WORK <input type="checkbox"/>	REMEDIAL WORK <input type="checkbox"/>
TEMPORARILY ABANDON <input type="checkbox"/>	ALTERING CASING <input type="checkbox"/>
PULL OR ALTER CASING <input type="checkbox"/>	COMMENCE DRILLING OPNS. <input type="checkbox"/>
OTHER: <input type="checkbox"/>	PLUG AND ABANDONMENT <input checked="" type="checkbox"/>
	CASING TEST AND CEMENT JOB <input type="checkbox"/>
	OTHER: <input type="checkbox"/>

12. Describe Proposed or Completed Operations (Clearly state all pertinent details, and give pertinent dates, including estimated date of starting any proposed work) SEE RULE 1103.

1. Notified NMOCD 11-12-91.
2. MIRU w/P&A equip. TOH w/prod equip. Starting date 11-13-91.
3. TIH w/bit & scrapper, c/o to 3500', TOH w/bit & scrapper.
4. TIH w/5 1/2" cmt retainer, set @ 3300', loaded hole w/salt gel mud.
5. Squeezed Grayburg open hole w/111 sxs Class C cmt.
6. Spt 45 sxs Class C cmt on top of cmt retainer, WOC, TOC @ 3262', TOH w/WS.
7. Perf squeeze holes @ 1200', TIH w/WS to 1250', spt 15 sxs Class C cmt from 1250' to 1100', TOH w/WS.
8. Perf squeeze holes @ 300', established circ to surface through squeeze hole.
9. Pumped 100 sxs Class C cmt down 5 1/2" csg until circ to surface through 8 5/8" annulus.
10. Cut off wellhead, installed dry hole marker, cleaned location. Completion date 11-15-91.

I hereby certify that the information above is true and complete to the best of my knowledge and belief.

SIGNATURE M.C. Duncan TITLE Engineer's Assistant DATE 11-18-91

TYPE OR PRINT NAME M.C. Duncan TELEPHONE NO. 393-7191

(This space for State Use)

APPROVED BY Larry W. Hiel TITLE OIL & GAS INSPECTOR DATE DEC 11 1995

CONDITIONS OF APPROVAL, IF ANY:

DISTRICT I
P.O. Box 1980, Hobbs, NM 88240

DISTRICT II
P.O. Drawer DD, Artesia, NM 88210

DISTRICT III
000 Rio Brazos Rd., Aztec, NM 87410

OIL CONSERVATION DIVISION

Box 2088
Santa Fe, New Mexico 87504-2088

WELL API NO.	06683 30-025-06691
5. Indicate Type of Lease	STATE <input type="checkbox"/> FEE <input checked="" type="checkbox"/>
6. State Oil & Gas Lease No.	
7. Lease Name or Unit Agreement Name	D.C. Hardy
8. Well No.	2
9. Pool name or Wildcat	Penrose Skelly-GB
10. Elevation (Show whether DF, RKB, RT, GR, etc.)	3497' GL

SUNDRY NOTICES AND REPORTS ON WELLS
(DO NOT USE THIS FORM FOR PROPOSALS TO DRILL OR TO DEEPEN OR PLUG BACK TO A DIFFERENT RESERVOIR. USE "APPLICATION FOR PERMIT" (FORM C-101) FOR SUCH PROPOSALS.)

Type of Well:
OIL WELL ☒ GAS WELL ☐ OTHER ☐
Name of Operator
Texaco Exploration and Production Inc.
Address of Operator
P.O. Box 730 Hobbs, New Mexico 88240
Well Location
Unit Letter 0 : 660 Feet From The North South Line and 1980 Feet From The East Line

Section 20 Township 21-S Range 37-E NMPM Lea County
10. Elevation (Show whether DF, RKB, RT, GR, etc.)
3497' GL

1. Check Appropriate Box to Indicate Nature of Notice, Report, or Other Data	
NOTICE OF INTENTION TO:	SUBSEQUENT REPORT OF:
PERFORM REMEDIAL WORK <input type="checkbox"/>	REMEDIAL WORK <input type="checkbox"/>
TEMPORARILY ABANDON <input type="checkbox"/>	ALTERING CASING <input type="checkbox"/>
WELL OR ALTER CASING <input type="checkbox"/>	COMMENCE DRILLING OPNS. <input type="checkbox"/>
OTHER: <input type="checkbox"/>	PLUG AND ABANDONMENT <input type="checkbox"/>
	CASING TEST AND CEMENT JOB <input type="checkbox"/>
	OTHER: <input type="checkbox"/>

2. Describe Proposed or Completed Operations (Clearly state all pertinent details, and give pertinent dates, including estimated date of starting any proposed work) SEE RULE 1103.

- Notify OCD 24 hours prior to commencement of plugging operations.
 - MIRUPU. Install BOP.
 - TIH with 5 1/2" cement retainer on WS and set at 3300'. Squeeze Grayburg open hole with 111 sxs of cement. (Class "C" w/ 2% CaCl2, 6.3 g/sack, 14.8 ppg, 1.32 ft3/sack.) Sting out of retainer leaving 35' of cement on top (4 sxs). WOC. Tag plug. Load hole with salt gel mud.
 - Perforate squeeze holes at 1200'.* Squeeze 5 1/2" annulus with 50 sxs by pumping down the casing with a wiper plug.
 - RU wireline. Perforate squeeze holes at 300'. Squeeze 5 1/2" annulus with 100 sxs by pumping down the casing.
 - Cut off wellhead. Install hole marker. Clean location.
- * Based on TOC below 1200'.

I hereby certify that the information above is true and complete to the best of my knowledge and belief.

SIGNATURE M.C. Duncan TITLE Engineer's Assistant DATE 10-23-91
TYPE OR PRINT NAME M.C. Duncan TELEPHONE NO. 393-7191

(This space for State Use)

APPROVED BY [Signature] TITLE DISTRICT 1 SUPERVISOR DATE OCT 24 1991

CONDITIONS OF APPROVAL, IF ANY:

Submit 5 Copies
Appropriate District Office
DISTRICT I
P.O. Box 1980, Hobbs, NM 88240

State of New Mexico
Energy, Minerals and Natural Resources Department

Form C-104
Revised 1-1-89
See Instructions
at Bottom of Page

OIL CONSERVATION DIVISION

P.O. Box 2088
Santa Fe, New Mexico 87504-2088

OIL CONSERVATION DIVISION

RECEIVED

DISTRICT II
P.O. Drawer DD, Artesia, NM 88210

DISTRICT III
1000 Rio Brazos Rd., Aztec, NM 87410

REQUEST FOR ALLOWABLE AND AUTHORIZATION
TO TRANSPORT OIL AND NATURAL GAS

Operator Texaco Exploration and Production Inc.	Well API No. 06683 30 025 00091
Address P. O. Box 730 Hobbs, New Mexico 88240-2528	
Reason(s) for Filing (Check proper box) <input checked="" type="checkbox"/> Other (Please explain) EFFECTIVE 6-1-91	
New Well <input type="checkbox"/>	Change in Transporter of: <input type="checkbox"/> Dry Gas <input type="checkbox"/>
Recompletion <input type="checkbox"/>	Oil <input type="checkbox"/> Casinghead Gas <input checked="" type="checkbox"/> Condensate <input type="checkbox"/>
Change in Operator <input checked="" type="checkbox"/>	
If change of operator give name and address of previous operator Texaco Producing Inc. P. O. Box 730 Hobbs, New Mexico 88240-2528	

II. DESCRIPTION OF WELL AND LEASE

Lease Name D C HARDY	Well No. 2	Pool Name, including Formation PENROSE SKELLY GRAYBURG	Kind of Lease State, Federal or Fee FEE	Lease No. 299200
Location Unit Letter 0 : 510 660 Feet From The SOUTH Line and 1980 Feet From The EAST Line Section 20 Township 21S Range 37E, NMPM, LEA County				

III. DESIGNATION OF TRANSPORTER OF OIL AND NATURAL GAS

Name of Authorized Transporter of Oil Shell Pipeline Corporation <input checked="" type="checkbox"/> or Condensate <input type="checkbox"/>	Address (Give address to which approved copy of this form is to be sent) P. O. Box 2648 Houston, Texas 77252					
Name of Authorized Transporter of Casinghead Gas Texaco Exploration and Production Inc. <input checked="" type="checkbox"/> or Dry Gas <input type="checkbox"/>	Address (Give address to which approved copy of this form is to be sent) P. O. Box 1137 Eunice, New Mexico 88231					
If well produces oil or liquids, give location of tanks.	Unit P	Sec. 20	Twp. 21S	Rge. 37E	Is gas actually connected? YES	When ? UNKNOWN

If this production is commingled with that from any other lease or pool, give commingling order number:

IV. COMPLETION DATA

Designate Type of Completion - (X)	Oil Well	Gas Well	New Well	Workover	Deepen	Plug Back	Same Res'v	Diff Res'v
Date Spudded	Date Compl. Ready to Prod.		Total Depth			P.B.T.D.		
Elevations (DF, RKB, RT, GR, etc.)	Name of Producing Formation		Top Oil/Gas Pay			Tubing Depth		
Perforations						Depth Casing Shoe		
TUBING, CASING AND CEMENTING RECORD								
HOLE SIZE	CASING & TUBING SIZE		DEPTH SET			SACKS CEMENT		

V. TEST DATA AND REQUEST FOR ALLOWABLE

OIL WELL (Test must be after recovery of total volume of load oil and must be equal to or exceed top allowable for this depth or be for full 24 hours.)

Date First New Oil Run To Tank	Date of Test	Producing Method (Flow, pump, gas lift, etc.)	
Length of Test	Tubing Pressure	Casing Pressure	Choke Size
Actual Prod. During Test	Oil - Bbls.	Water - Bbls.	Gas- MCF

GAS WELL

Actual Prod. Test - MCF/D	Length of Test	Bbls. Condensate/MMCF	Gravity of Condensate
Testing Method (pilot, back pr.)	Tubing Pressure (Shut-in)	Casing Pressure (Shut-in)	Choke Size

VI. OPERATOR CERTIFICATE OF COMPLIANCE

I hereby certify that the rules and regulations of the Oil Conservation Division have been complied with and that the information given above is true and complete to the best of my knowledge and belief.

Signature K. M. Miller
K. M. Miller Div. Ops. Engr.
Printed Name Title
May 7, 1991 915-688-4834
Date Telephone No.

OIL CONSERVATION DIVISION

Date Approved JUN 03 1991
By [Signature]
Title Geologist

INSTRUCTIONS: This form is to be filed in compliance with Rule 1104

- 1) Request for allowable for newly drilled or deepened well must be accompanied by tabulation of deviation tests taken in accordance with Rule 111.
- 2) All sections of this form must be filled out for allowable on new and recompleted wells.
- 3) Fill out only Sections I, II, III, and VI for changes of operator, well name or number, transporter, or other such changes.
- 4) Separate Form C-104 must be filed for each pool in multiply completed wells.

STATE OF NEW MEXICO
ENERGY AND MINERALS DEPARTMENT

NO. OF COPIES RECEIVED	
DISTRIBUTION	
SANTA FE	
FILE	
U.S.G.S.	
LAND OFFICE	
TRANSPORTER	OIL
	GAS
OPERATOR	
PRORATION OFFICE	

OIL CONSERVATION DIVISION

P. O. BOX 2088

SANTA FE, NEW MEXICO 87501

Form C-104
Revised 10-01-78
Format 06-01-83
Page 1

REQUEST FOR ALLOWABLE
AND
AUTHORIZATION TO TRANSPORT OIL AND NATURAL GAS

I.

Operator
TEXACO Producing Inc.

Address
P. O. Box 728, Hobbs, New Mexico 88240

Reason(s) for filing (Check proper box)

<input type="checkbox"/> New Well	Change in Transporter of:	<input type="checkbox"/> Dry Gas
<input type="checkbox"/> Recompletion	<input type="checkbox"/> Oil	<input type="checkbox"/> Condensate
<input checked="" type="checkbox"/> Change in Ownership	<input type="checkbox"/> Casinghead Gas	

Other (Please explain)
Change of Operator from Getty to
TEXACO Producing Inc. 12/31/84

If change of ownership give name
and address of previous owner _____

II. DESCRIPTION OF WELL AND LEASE

Lease Name <u>D.C. Hardy</u>	Well No. <u>2</u>	Pool Name, Including Formation <u>Penrose Skelly Grayburg</u>	Kind of Lease State, Federal or Fee <u>Fee</u>	Lease No.
Location Unit Letter <u>0</u> : <u>660</u> Feet From The <u>South</u> Line and <u>1980</u> Feet From The <u>East</u> Line of Section <u>20</u> Township <u>21</u> Range <u>37</u> , NMPM, <u>Lea</u> County				

III. DESIGNATION OF TRANSPORTER OF OIL AND NATURAL GAS

Name of Authorized Transporter of Oil <input checked="" type="checkbox"/> or Condensate <input type="checkbox"/> <u>Shell Pipeline Corp.</u>	Address (Give address to which approved copy of this form is to be sent) <u>P.O. Box 1910, Midland, TX 79702</u>
Name of Authorized Transporter of Casinghead Gas <input checked="" type="checkbox"/> or Dry Gas <input type="checkbox"/> <u>TEXACO Producing Inc.</u>	Address (Give address to which approved copy of this form is to be sent) <u>P.O. Box 3000, Tulsa, OK 74102</u>
If well produces oil or liquids, give location of tanks.	Unit Sec. Twp. Rge. <u>P</u> <u>20</u> <u>21</u> <u>37</u>
Is gas actually connected?	When <u>YES</u> <u>Unknown</u>

If this production is commingled with that from any other lease or pool, give commingling order number: PC-289

NOTE: Complete Parts IV and V on reverse side if necessary.

VI. CERTIFICATE OF COMPLIANCE

I hereby certify that the rules and regulations of the Oil Conservation Division have been complied with and that the information given is true and complete to the best of my knowledge and belief.

W. B. Loh

(Signature)

District Operations Manager

(Title)

April 19, 1985

(Date)

OIL CONSERVATION DIVISION

APPROVED 6/1, 19 85

BY [Signature]
TITLE DISTRICT I SUPERVISOR

This form is to be filed in compliance with RULE 1104.

If this is a request for allowable for a newly drilled or deepened well, this form must be accompanied by a tabulation of the deviation tests taken on the well in accordance with RULE 111.

All sections of this form must be filled out completely for allowable on new and recompleted wells.

Fill out only Sections I, II, III, and VI for changes of owner, well name or number, or transporter, or other such change of condition.

Separate Forms C-104 must be filed for each pool in multiply completed wells.

NO. OF COPIES RECEIVED		
DISTRIBUTION		
HTA FE		
FE		
REG.S.		
ND OFFICE		
ERATOR		

NEW MEXICO OIL CONSERVATION COMMISSION

3-NMOCC

1-FILE

Form C-103
Supersedes Old
C-102 and C-103
Effective 1-1-65

5a. Indicate Type of Lease.
State <input type="checkbox"/> Fee <input checked="" type="checkbox"/>
5. State Oil & Gas Lease No.
7. Unit Agreement Name
6. Farm or Lease Name
D. C. HARDY
9. Well No.
2
10. Field and Pool, or Wildcat
PENROSE SKELLY
12. County
LEA

SUNDRY NOTICES AND REPORTS ON WELLS

(DO NOT USE THIS FORM FOR PROPOSALS TO DRILL OR TO RE-OPEN OR PLUG BACK TO A DIFFERENT RESERVOIR. USE "APPLICATION FOR PERMIT TO DRILL" (FORM C-101) FOR SUCH PROPOSALS.)

OIL WELL <input checked="" type="checkbox"/>	GAS WELL <input type="checkbox"/>	OTHER <input type="checkbox"/>
Name of Operator		
GETTY OIL COMPANY		
Address of Operator		
P.O. BOX 249, HOBBS, NEW MEXICO 88240		
Location of Well		
UNIT LETTER	O	660 FEET FROM THE SOUTH LINE AND 1980 FEET FROM
THE EAST LINE, SECTION 20	TOWNSHIP 21-S	RANGE 37-E NMPM.

15. Elevation (Show whether DF, RT, GR, etc.)

Check Appropriate Box To Indicate Nature of Notice, Report or Other Data
NOTICE OF INTENTION TO: SUBSEQUENT REPORT OF:

FORM REMEDIAL WORK <input type="checkbox"/>	PLUG AND ABANDON <input type="checkbox"/>	REMEDIAL WORK <input checked="" type="checkbox"/>	ALTERING CASING <input type="checkbox"/>
ACCRUALLY ABANDON <input type="checkbox"/>	CHANGE PLANS <input type="checkbox"/>	COMMENCE DRILLING OPNS. <input type="checkbox"/>	PLUG AND ABANDONMENT <input type="checkbox"/>
AL OR ALTER CASING <input type="checkbox"/>	OTHER <input type="checkbox"/>	CASING TEST AND CEMENT JOBS <input type="checkbox"/>	

Describe Proposed or Completed Operations (Clearly state all pertinent details, and give pertinent dates, including estimated date of starting any proposed work) SEE RULE 1103.

Casing Inspection Log indicated bad casing in the Eumont Queen Gas Section; therefore, completion attempt abandoned.

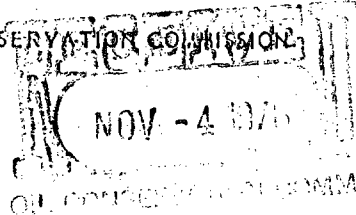
I hereby certify that the information above is true and complete to the best of my knowledge and belief.

BY C. L. Wade: <i>C. L. Wade</i>	TITLE AREA SUPERINTENDENT	DATE January 7, 1977
APPROVED BY: <i>[Signature]</i>	TITLE SUPERVISOR DISTRICT	DATE JAN 11 1977
ADDITIONS OF APPROVAL, IF ANY		

NO. OF COPIES RECEIVED		
DISTRIBUTION		
DATA FE		
FE		
U.G.S.		
ND OFFICE		
ERATOR		

NEW MEXICO OIL CONSERVATION COMMISSION

3-NMOCC
1-FILE



Form C-103.
Supersedes Old
C-102 and C-103
Effective 1-1-65

5a. Indicate Type of Lease	State <input type="checkbox"/>	Fee <input checked="" type="checkbox"/>
5. State Oil & Gas Lease No.		
7. Unit Agreement Name		
8. Farm or Lease Name	D. C. HARDY	
9. Well No.	2	
10. Field and Pool, or Wildcat	PENROSE SKELLY	
12. County	LEA	

SUNDRY NOTICES AND REPORTS ON WELLS

(DO NOT USE THIS FORM FOR PROPOSALS TO DRILL OR TO RE-OPEN OR PLUG BACK TO A DIFFERENT RESERVOIR.
USE "APPLICATION FOR PERMIT" (FORM C-101) FOR SUCH PROPOSALS.)

OIL WELL <input checked="" type="checkbox"/>	GAS WELL <input type="checkbox"/>	OTHER <input type="checkbox"/>
Name of Operator ETTY OIL COMPANY		
Address of Operator O. BOX 249, HOBBS, NEW MEXICO 88240		
Location of Well UNIT LETTER <u>O</u> <u>660</u> FEET FROM THE <u>South</u> LINE AND <u>1980</u> FEET FROM THE <u>EAST</u> LINE, SECTION <u>20</u> TOWNSHIP <u>21-S</u> RANGE <u>37-E</u> NMPM.		

15. Elevation (Show whether DF, RT, GR, etc.)

Check Appropriate Box To Indicate Nature of Notice, Report or Other Data
NOTICE OF INTENTION TO: SUBSEQUENT REPORT OF:

IFRM REMEDIAL WORK <input checked="" type="checkbox"/>	PLUG AND ABANDON <input type="checkbox"/>	REMEDIAL WORK <input type="checkbox"/>	ALTERING CASING <input type="checkbox"/>
ACCHARILY ABANDON <input type="checkbox"/>	CHANGE PLANS <input type="checkbox"/>	COMMENCE DRILLING OPHS. <input type="checkbox"/>	PLUG AND ABANDONMENT <input type="checkbox"/>
IL OR ALTER CASING <input type="checkbox"/>	OTHER <input type="checkbox"/>	CASING TEST AND CEMENT JOG <input type="checkbox"/>	

Describe Proposed or Completed Operations (Clearly state all pertinent details, and give pertinent dates, including estimated date of starting any proposed work) SEE RULE 1103.

It is proposed to recomplete this well in the Eumont Queen Gas Section as follows:

- Set CIBP @ 3650+ and dump 10' cement on top.
- Perforate Queen Section est. 3340-3630' with 15 holes.
- Acidize with 3000 gals. 15% NE Acid
- Swab test to evaluate.

M

Expires 11/3/77

I hereby certify that the information above is true and complete to the best of my knowledge and belief.

Ernest P. Morales:

VED. Ernest Morales TITLE AREA ENGINEER DATE 10-27-76

MOVED BY Jerry Lopez TITLE SUPERVISOR DISTRICT I DATE NOV 3 1976

CONDITIONS OF APPROVAL, IF ANY:

IAO/hh

NO. OF COPIES RECEIVED	
DISTRIBUTION	
NTA FE	
LE	
S.G.S.	
ND OFFICE	
ERATOR	

NEW MEXICO OIL CONSERVATION COMMISSION

3-NMOCC
1-File

Form C-103
Supersedes Old
C-102 and C-103
Effective 1-1-65

5a. Indicate Type of Lease
State <input type="checkbox"/> Fee <input checked="" type="checkbox"/>

5. State Oil & Gas Lease No.

SUNDRY NOTICES AND REPORTS ON WELLS

(DO NOT USE THIS FORM FOR PROPOSALS TO DRILL OR TO DEEPEN OR PLUG BACK TO A DIFFERENT RESERVOIR. USE "APPLICATION FOR PERMIT -" (FORM C-101) FOR SUCH PROPOSALS.)

OIL WELL <input checked="" type="checkbox"/>	GAS WELL <input type="checkbox"/>	OTHER <input type="checkbox"/>
--	-----------------------------------	--------------------------------

Name of Operator
GETTY OIL COMPANY

Address of Operator
P.O. Box 249, HOBBS, NEW MEXICO 88240

Location of Well
UNIT LETTER 0 , 660 FEET FROM THE SOUTH LINE AND 1980 FEET FROM
THE EAST LINE, SECTION 20 TOWNSHIP 21S RANGE 37E NMPM.

7. Unit Agreement Name

8. Farm or Lease Name D. C. HARDY

9. Well No. 21

10. Field and Pool, or Wildcat <i>Lease 21</i>

15. Elevation (Show whether DF, RT, GR, etc.)

12. County LEA

Check Appropriate Box To Indicate Nature of Notice, Report or Other Data

NOTICE OF INTENTION TO:

PERFORM REMEDIAL WORK <input type="checkbox"/>	PLUG AND ABANDON <input type="checkbox"/>
TEMPORARILY ABANDON <input type="checkbox"/>	CHANGE PLANS <input type="checkbox"/>
REPAIR OR ALTER CASING <input type="checkbox"/>	OTHER <input type="checkbox"/>

SUBSEQUENT REPORT OF:

REMEDIAL WORK <input type="checkbox"/>	ALTERING CASING <input type="checkbox"/>
COMMENCE DRILLING OPNS. <input type="checkbox"/>	PLUG AND ABANDONMENT <input type="checkbox"/>
CASING TEST AND CEMENT JOBS <input type="checkbox"/>	NIO WELL <input checked="" type="checkbox"/>
OTHER <input type="checkbox"/>	

Describe Proposed or Completed Operations (Clearly state all pertinent details, and give pertinent dates, including estimated date of starting any proposed work) SEE RULE 1103.

The Area is being evaluated for possible waterflood.

Request extension of shut-in status. This Area is being evaluated for possible waterflood.

Well shut-in 4-1-70.



Expires 11-1-76

M

I hereby certify that the information above is true and complete to the best of my knowledge and belief.

VED C.L. Wade: *C.L. Wade* TITLE AREA SUPERINTENDENT DATE 10-22-75

ROVED BY *John W. Runyan* TITLE *Geologist* DATE OCT 24 1975

NDITIONS OF APPROVAL, IF ANY:

WLG/bh

1-FILE

NO. OF COPIES RECEIVED		
DISTRIBUTION		
ANTA FE		
FILE		
J.S.G.S.		
LAND OFFICE		
OPERATOR		

NEW MEXICO OIL CONSERVATION COMMISSION

Form C-103
Supersedes Old
C-102 and C-103
Effective 1-1-65

SUNDRY NOTICES AND REPORTS ON WELLS

(DO NOT USE THIS FORM FOR PROPOSALS TO DRILL OR TO DEEPEN OR PLUG BACK TO A DIFFERENT RESERVOIR.
USE "APPLICATION FOR PERMIT -" (FORM C-101) FOR SUCH PROPOSALS.)

OIL WELL <input checked="" type="checkbox"/>	GAS WELL <input type="checkbox"/>	OTHER- <input type="checkbox"/>	5a. Indicate Type of Lease State <input type="checkbox"/> Fee <input checked="" type="checkbox"/>
Name of Operator GETTY OIL COMPANY			5. State Oil & Gas Lease No.
Address of Operator P.O. BOX 249, HOBBS, NEW MEXICO 88240			7. Unit Agreement Name
Location of Well UNIT LETTER <u>20</u> <u>660</u> FEET FROM THE <u>SOUTH</u> LINE AND <u>1980</u> FEET FROM THE <u>EAST</u> LINE, SECTION <u>20</u> TOWNSHIP <u>21-S</u> RANGE <u>37-E</u> NMPM.			8. Farm or Lease Name D. C. HARDY
			9. Well No. 2
			10. Field and Pool, or Wildcat <u>Paddock Still</u>
15. Elevation (Show whether DF, RT, GR, etc.)			12. County LEA

Check Appropriate Box To Indicate Nature of Notice, Report or Other Data

NOTICE OF INTENTION TO:

PERFORM REMEDIAL WORK ☐
TEMPORARILY ABANDON ☐
PULL OR ALTER CASING ☐
OTHER ☐

PLUG AND ABANDON ☐
CHANGE PLANS ☐

SUBSEQUENT REPORT OF:

REMEDIAL WORK ☐
COMMENCE DRILLING OPNS. ☐
CASING TEST AND CEMENT JOBS ☐
OTHER ☐

ALTERING CASING ☐
PLUG AND ABANDONMENT ☐
NIO WELL ☒

7. Describe Proposed or Completed Operations (Clearly state all pertinent details, and give pertinent dates, including estimated date of starting any proposed work) SEE RULE 1103.

This well is being held for possible replacement of Well No. 4. It will also be evaluated for possibility of a Paddock recompletion after Well No. 1 is reworked.

The well was shut-in 4-1-70; uneconomical to operate.

Expires 11/1/75

18. I hereby certify that the information above is true and complete to the best of my knowledge and belief.

SIGNED C.L. Wade: C.L. Wade TITLE AREA SUPERINTENDENT DATE 10-25-74
APPROVED BY [Signature] TITLE SUPERVISOR DISTRICT I DATE NOV 4 1974
CONDITIONS OF APPROVAL, IF ANY:

NO. OF COPIES RECEIVED	
DISTRIBUTION	
SANTA FE	
FILE	
U.S.G.S.	
LAND OFFICE	
OPERATOR	

NEW MEXICO OIL CONSERVATION COMMISSION

3-NMOCC
1-File

MAIN OFFICE 000

10 MAY 1 AM 8 40

Form C-103
Supersedes Old
C-102 and C-103
Effective 1-1-65

5a. Indicate Type of Lease	
State <input type="checkbox"/>	Fee <input checked="" type="checkbox"/>
5. State Oil & Gas Lease No.	

SUNDRY NOTICES AND REPORTS ON WELLS

(DO NOT USE THIS FORM FOR PROPOSALS TO DRILL OR TO DEEPEN OR PLUG BACK TO A DIFFERENT RESERVOIR. USE "APPLICATION FOR PERMIT -" (FORM C-101) FOR SUCH PROPOSALS.)

1. OIL WELL <input checked="" type="checkbox"/> GAS WELL <input type="checkbox"/> OTHER <input type="checkbox"/>	7. Unit Agreement Name
2. Name of Operator GETTY OIL COMPANY	8. Farm or Lease Name D. C. HARDY
3. Address of Operator P.O. BOX 249, HOBBS, NEW MEXICO 88240	9. Well No. 2
4. Location of Well UNIT LETTER O 660 FEET FROM THE South LINE AND 1980 FEET FROM THE East LINE, SECTION 20 TOWNSHIP 21S RANGE 37E NMPM.	10. Field and Pool, or Wildcat PENROSE SKELLY
15. Elevation (Show whether DF, RT, GR, etc.)	12. County LEA

Check Appropriate Box To Indicate Nature of Notice, Report or Other Data
NOTICE OF INTENTION TO: SUBSEQUENT REPORT OF:

PERFORM REMEDIAL WORK <input type="checkbox"/>	PLUG AND ABANDON <input type="checkbox"/>	REMEDIAL WORK <input type="checkbox"/>	ALTERING CASING <input type="checkbox"/>
TEMPORARILY ABANDON <input type="checkbox"/>	CHANGE PLANS <input type="checkbox"/>	COMMENCE DRILLING OPNS. <input type="checkbox"/>	PLUG AND ABANDONMENT <input type="checkbox"/>
PULL OR ALTER CASING <input type="checkbox"/>	OTHER <input type="checkbox"/>	CASING TEST AND CEMENT JOB <input type="checkbox"/>	OTHER <input checked="" type="checkbox"/> SHUT WELL IN

17. Describe Proposed or Completed Operations (Clearly state all pertinent details, and give pertinent dates, including estimated date of starting any proposed work) SEE RULE 1103.

WELL UNECONOMICAL TO PRODUCE. WELL SHUT IN PENDING STUDY OF WATERFLOOD POSSIBILITIES.

18. I hereby certify that the information above is true and complete to the best of my knowledge and belief.

SIGNED <u><i>C. J. Wade</i></u>	TITLE <u>AREA SUPERINTENDENT</u>	DATE <u>APRIL 22, 1970</u>
APPROVED BY <u><i>[Signature]</i></u>	TITLE <u>SUPERVISOR DISTRICT</u>	DATE <u>APR 28 1971</u>
CONDITIONS OF APPROVAL, IF ANY: WLG/bh		

NO. OF COPIES RECEIVED		
DISTRIBUTION		
SANTA FE		
FILE		
U.S.G.S.		
LAND OFFICE		
TRANSPORTER	OIL	
	GAS	
OPERATOR		
PRORATION OFFICE		

NEW MEXICO OIL CONSERVATION COMMISSION
REQUEST FOR ALLOWABLE
AND
AUTHORIZATION TO TRANSPORT OIL AND NATURAL GAS

Form C-104
Supersedes Old C-104 and C-110
Effective 1-1-65

I.

Operator Getty Oil Company	
Address P. O. Box 249, Hobbs, New Mexico 88240	
Reason(s) for filing (Check proper box)	Other (Please explain)
New Well <input type="checkbox"/>	Change in Transporter of:
Recompletion <input type="checkbox"/>	Oil <input type="checkbox"/> Dry Gas <input type="checkbox"/>
Change in Ownership <input checked="" type="checkbox"/>	Casinghead Gas <input type="checkbox"/> Condensate <input type="checkbox"/>
Formerly Tidewater 60 D. C. Hardy #2	
If change of ownership give name and address of previous owner Tidewater Oil Company, P. O. Box 249, Hobbs, New Mexico 88240	

II. DESCRIPTION OF WELL AND LEASE

Lease Name D. C. Hardy	Well No. 2	Pool Name, Including Formation Penrose Skelly Grayburg	Kind of Lease State, Federal or Fee Fee	Lease No.
Location Unit Letter 0 ; 990 Feet From The South Line and 1980 Feet From The East				
Line of Section 20 Township 21S Range 37E , NMPM, Lea County				

III. DESIGNATION OF TRANSPORTER OF OIL AND NATURAL GAS

Name of Authorized Transporter of Oil <input checked="" type="checkbox"/> or Condensate <input type="checkbox"/> Skelly Pipeline Co.	Address (Give address to which approved copy of this form is to be sent) Box 1900, Midland, Texas	
Name of Authorized Transporter of Casinghead Gas <input checked="" type="checkbox"/> or Dry Gas <input type="checkbox"/> Skelly Oil Co.	Address (Give address to which approved copy of this form is to be sent) Box 1135, Eunice, New Mexico	
If well produces oil or liquids, give location of tanks.	Unit F	Sec. 20
	Twp. 20	Rge. 37
	Is gas actually connected? Yes When	

If this production is commingled with that from any other lease or pool, give commingling order number: **PC - 289**

IV. COMPLETION DATA

Designate Type of Completion - (X)	Oil Well	Gas Well	New Well	Workover	Deepen	Plug Back	Same Res'v.	Diff. Res'v.
Date Spudded	Date Compl. Ready to Prod.		Total Depth		P.B.T.D.			
Elevations (DF, RKB, RT, GR, etc.)	Name of Producing Formation		Top Oil/Gas Pay		Tubing Depth			
Perforations					Depth Casing Shoe			
TUBING, CASING, AND CEMENTING RECORD								
HOLE SIZE	CASING & TUBING SIZE		DEPTH SET		SACKS CEMENT			

V. TEST DATA AND REQUEST FOR ALLOWABLE OIL WELL (Test must be after recovery of total volume of load oil and must be equal to or exceed top allowable for this depth or be for full 24 hours)

Date First New Oil Run To Tanks	Date of Test	Producing Method (Flow, pump, gas lift, etc.)	
Length of Test	Tubing Pressure	Casing Pressure	Choke Size
Actual Prod. During Test	Oil-Bbls.	Water-Bbls.	Gas-MCF

GAS WELL

Actual Prod. Test-MCF/D	Length of Test	Bbls. Condensate/MMCF	Gravity of Condensate
Testing Method (pitot, back pr.)	Tubing Pressure (shut-in)	Casing Pressure (shut-in)	Choke Size

VI. CERTIFICATE OF COMPLIANCE

I hereby certify that the rules and regulations of the Oil Conservation Commission have been complied with and that the information given above is true and complete to the best of my knowledge and belief.

C. E. Wade
(Signature)
Area Superintendent

September 30, 1967

(Date)

OIL CONSERVATION COMMISSION

APPROVED _____, 19____
BY **James L. Ramsey**
TITLE **Supervisor**

This form is to be filed in compliance with RULE 1104.

If this is a request for allowable for a newly drilled or deepened well, this form must be accompanied by a tabulation of the deviation tests taken on the well in accordance with RULE 111.

All sections of this form must be filled out completely for allowable on new and recompleted wells.

Fill out only Sections I, II, III, and VI for changes of owner well name or number, or transporter, or other such change of condition. Separate Forms C-104 must be filed for each pool in multiple.

NUMBER OF COPIES RECEIVED	
DISTRIBUTION	
SANTA FE	
FILE	
U.S.G.S.	
LAND OFFICE	
TRANSPORTER	OIL GAS
PRODUCTION OFFICE	
OPERATOR	

NEW MEXICO OIL CONSERVATION COMMISSION
SANTA FE, NEW MEXICO
CERTIFICATE OF COMPLIANCE AND AUTHORIZATION
TO TRANSPORT OIL AND NATURAL GAS

FORM C-110
 (Rev. 7-60)

FILE THE ORIGINAL AND 4 COPIES WITH THE APPROPRIATE OFFICE

Company or Operator Tidewater Oil Co.				Lease "GO" D. C. Hardy		Well No. 2	
Unit Letter 0	Section 20	Township 21	Range 37	County Lea			
Pool Penrose- Skelly				Kind of Lease (State, Fed, Fee) Fee			
If well produces oil or condensate give location of tanks			Unit Letter SW/4	Section 20	Township 21	Range 37	
Authorized transporter of oil <input checked="" type="checkbox"/> or condensate <input type="checkbox"/> Shell Pipe Line Corp.†				Address (give address to which approved copy of this form is to be sent) Box 1008, Hobbs, N. Mex.			
Is Gas Actually Connected? Yes <input checked="" type="checkbox"/> No <input type="checkbox"/>							
Authorized transporter of casing head gas <input checked="" type="checkbox"/> or dry gas <input type="checkbox"/>			Date Connected	Address (give address to which approved copy of this form is to be sent) Box 1135, Eunice, N. Mex.			
Skelly Oil Co.							

If gas is not being sold, give reasons and also explain its present disposition:

REASON(S) FOR FILING (please check proper box)

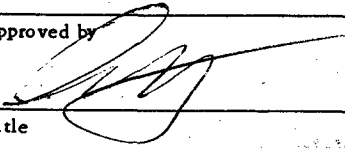
- | | |
|--|--|
| New Well <input type="checkbox"/> | Change in Ownership <input type="checkbox"/> |
| Change in Transporter (check one) | Other (explain below) |
| Oil <input type="checkbox"/> Dry Gas <input type="checkbox"/> | Change in lease designation |
| Casing head gas . <input type="checkbox"/> Condensate.. <input type="checkbox"/> | |

Remarks Formerly Getty Oil Co. D. C. Hardy Well #2, operated by Tidewater Oil Co.

The undersigned certifies that the Rules and Regulations of the Oil Conservation Commission have been complied with.

Executed this the 19 day of Sept, 1963

OIL CONSERVATION COMMISSION

Approved by 	By P. L. Wade
Title Area Supt	Title Area Supt
Date	Company Tidewater Oil Co.
	Address Box 249, Hobbs, N. Mex.

NEW MEXICO OIL CONSERVATION COMMISSION
SANTA FE, NEW MEXICO

Form C-110
Revised 7/1/55

(File the original and 4 copies with the appropriate district office)

CERTIFICATE OF COMPLIANCE AND AUTHORIZATION
TO TRANSPORT OIL AND NATURAL GAS

Getty Oil Company - Owner

Company or Operator Tidewater Oil Company - Operator

1956 MAY 15 AM 11:09 Hobbs Office OCC

Well No. 2 Unit Letter 0 S 20 T 21 R 37 Pool Penrose-Skelly

County Lea Kind of Lease (State, Fed. or Patented) Patented

If well produces oil or condensate, give location of tanks: Unit SW/4 S 20 T 21 R 37

Authorized Transporter of Oil or Condensate Shell Pipe Line Corporation

Address Box 1598 Hobbs, New Mexico

(Give address to which approved copy of this form is to be sent)

Authorized Transporter of Gas Skelly Oil Company

Address Box 1135 Eunice, New Mexico

(Give address to which approved copy of this form is to be sent)

If Gas is not being sold, give reasons and also explain its present disposition:

Reasons for Filing: (Please check proper box) New Well ()

Change in Transporter of (Check One): Oil () Dry Gas () C'head () Condensate ()

Change in Ownership () Other Change in name (x)

Remarks: (Give explanation below)

The name of Tide Water Associated Oil Company has been changed to Tidewater Oil Company. The name of Pacific Western Oil Corporation has been changed to Getty Oil Company to be effective June 1, 1956.

The undersigned certifies that the Rules and Regulations of the Oil Conservation Commission have been complied with.

Executed this the 21 day of May 19 56

Tidewater Oil Company, Operator
for Getty Oil Company.

Approved MAY 19 1956 19 56

By H. P. Shackelford
Title Area Supt.

OIL CONSERVATION COMMISSION

Company Tidewater Oil Company

By C. M. Ludy

Address Box 547 Hobbs, New Mexico

Title Engineer District I.

NEW MEXICO OIL CONSERVATION COMMISSION
SANTA FE, NEW MEXICO

(File the original and 4 copies with the appropriate district office)

CERTIFICATE OF COMPLIANCE AND AUTHORIZATION
TO TRANSPORT OIL AND NATURAL GAS

Pacific Western Oil Corp - Owner

Company or Operator Tide Water Assoc. Oil Co. - Operator Lease D.C. Hardy

Well No. 2 Unit Letter O S 20 T 21 R 37 Pool Penrose-Skelley

County Lea Kind of Lease (State, Fed. or Patented) Patented

If well produces oil or condensate, give location of tanks: Unit SW/4 S 20 T 21 R 37

Authorized Transporter of Oil or Condensate Shell Pipe Line Corporation

Address Box 1598 Hobbs, New Mexico

(Give address to which approved copy of this form is to be sent)

Authorized Transporter of Gas Skelly Oil Company

Address Box 1135 Eunice, New Mexico

(Give address to which approved copy of this form is to be sent)

If Gas is not being sold, give reasons and also explain its present disposition:

Reasons for Filing:(Please check proper box) New Well ()

Change in Transporter of (Check One): Oil () Dry Gas () C'head () Condensate ()

Change in Ownership () Other Change in Operator (X)

Remarks: _____ (Give explanation below)

Effective January 1st, 1956 operator changed from

Skelly Oil Company to Tide Water Assoc. Oil Co.

The undersigned certifies that the Rules and Regulations of the Oil Conservation Commission have been complied with.

Executed this the 31 day of December 1955

Tide Water Assoc. Oil Co. operator
for Pacific Western Oil Corp.

By E. W. Hogue
E. W. Hogue

Title Field Foreman

Approved 19

OIL CONSERVATION COMMISSION

CompanyTide Water Associated Oil Company

By C. H. Kessler

Address Box 547 Hobbs, New Mexico

Title Engineer District

NEW MEXICO OIL CONSERVATION COMMISSION

Santa Fe, New Mexico

MAIN OFFICE OCC

It is necessary that Form C-104 be approved before this form can be approved and an initial allowable be assigned to any completed Oil or Gas well. Submit this form in QUADRUPLICATE.

CERTIFICATE OF COMPLIANCE AND AUTHORIZATION
TO TRANSPORT OIL AND NATURAL GAS

Skelly Oil Company Operator for
Pacific Western Oil Corp.

Company or Operator..... Lease..... Hardy

Address..... Box 38, Hobbs, New Mexico..... Tulsa, Oklahoma
(Local or Field Office) (Principal Place of Business)

Unit 0, Well(s) No. 2, Sec. 20, T. 21S, R. 37E, Pool. Penrose-Skelly

County Lea Kind of Lease: Patent

If Oil well Location of Tanks 20-21S-37E

Authorized Transporter Skelly Gasoline Dept. Address of Transporter

Eunice, New Mexico
(Local or Field Office)

Tulsa, Oklahoma
(Principal Place of Business)

Per cent of ~~Oil~~ Natural Gas to be Transported 100 Other Transporters authorized to transport Oil and Natural Gas
from this unit are Shell Pipe Line Co.

100 %

REASON FOR FILING: (Please check proper box)

NEW WELL..... ☐ CHANGE IN OWNERSHIP..... ☐

CHANGE IN TRANSPORTER..... ☐ OTHER (Explain under Remarks)..... ☒

REMARKS:

Casinghead Gas - In compliance with Order #R-520

The undersigned certifies that the Rules and Regulations of the Oil Conservation Commission have been complied with.

Executed this the 24th day of August, 1954.

Skelly Oil Company

Approved..... SEP 14 1954....., 19.....

OIL CONSERVATION COMMISSION

By S. G. Stanley

Title Engineer District 1

By J. M. Dunlap

Title Dist. Supt.

**OIL CONSERVATION COMMISSION
STATE OF NEW MEXICO**

CERTIFICATE OF COMPLIANCE AND AUTHORIZATION TO TRANSPORT OIL

Company or Operator Pacific Western Oil Corp. Lease D. C. Hardy
 Address Hobbs, New Mexico Tulsa, Oklahoma
(Local or Field Office) (Principal Place of Business)
 Unit O Wells No. 2 Sec. 20 T. 21 R. 37 Field Penrose-Skelly County Lea
 Kind of Lease Pat. Location of Tanks Sec. 20, on Hardy lse.
 Transporter Shell Pipe Line Corp. Address of Transporter Hobbs, New Mexico
(Principal Place of Business) (Local or Field Office)
Houston, Texas Percent of oil to be transported 100. Other transporters author-
 ized to transport oil from this unit are _____ %

REMARKS: This report corrects report submitted August 22, 1946, which through error showed this well in Unit C instead of Unit "O" and showed the Hardy field instead of the Penrose-Skelly field.

The undersigned certifies that the rules and regulations of the Oil Conservation Commission have been complied with except as noted above and that gathering agent is authorized to transport the percentage of oil produced from the above described property and that this authorization will be valid until further notice to the transporter named herein or until cancelled by the Oil Conservation Commission of New Mexico.

Executed this the 29 day of November, 1946.

Skelly Oil Company

(Company or Operator)

By J. N. Dunlavy

Title Dist. Supt.

State of New Mexico

County of Lea

Before me, the undersigned authority, on this day personally appeared J. N. Dunlavy known to me to be the person whose name is subscribed to the above instrument, who being by me duly sworn on oath states that he is authorized to make this report and has knowledge of the facts stated herein and that said report is true and correct.

Subscribed and sworn to before me, this the 29 day of November, 1946

Notary Public in and for Lea County,

Approved: 12-5- 1946

OIL CONSERVATION COMMISSION

By C. B. Livingston

(See Instruction on Reverse Side)

Company or Operator Pacific Eastern Oil Corp. Lease D. C. Hardy
Address Hobbs, New Mexico Tulsa, Oklahoma
(Local or Field Office) (Principal Place of Business)
Unit C Wells No. 2 Sec 20 T 21 R 37 Field Hardy County Lea
Kind of Lease Lease Location of Tanks Section 20, on Hardy lse.
Transporter Shell Pipe Line Corp. Address of Transporter Hobbs, New Mexico
(Local or Field Office)
Houston, Texas Percent of oil to be transported 100. Other transporters author-
(Principal Place of Business) ized to transport oil from this unit are _____ %

The undersigned certifies that the rules and regulations of the Oil Conservation Commission have been complied with except as noted above and that gathering agent is authorized to transport the percentage of oil produced from the above described property and that this authorization will be valid until further notice to the transporter named herein or until cancelled by the Oil Conservation Commission of New Mexico.

By J. N. Mulvaney Oil Corp.
Title District Superintendent

Before me, the undersigned authority, on this day personally appeared J. N. Dunlavy known to me to be the person whose name is subscribed to the above instrument, who being by me duly sworn on oath states that he is authorized to make this report and has knowledge of the facts stated herein and that said report is true and correct.

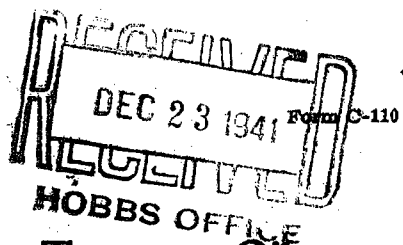
Notary Public in and for Lea County, _____

By W. J. [Signature]

(See Instruction on Reverse Side)

ORIGINAL

OIL CONSERVATION COMMISSION
STATE OF NEW MEXICO



Certificate of Compliance and Authorization to Transport Oil

Company or Operator SKELLY OIL CO., INC. Lease D. C. Hardy
Address Hobbs, New Mexico Tulsa, Okla.
(Local or Field Office) (Principal Place of Business)
Unit C Wells No. 2 Sec. 20 T. 21 R. 37 Field Hardy County Lea
Kind of Lease Pat. Location of Tanks Sec. 20, on Hardy lse.
Transporter Shell Pipe Line Corp. Address of Transporter Hobbs, N.M.
(Local or Field Office)
Houston, Texas Percent of oil to be transported 100 Other transporters author-
(Principal Place of Business) ized to transport oil from this unit are _____ %

REMARKS:

The undersigned certifies that the above rules and regulations of the Oil Conservation Commission have been complied with except as noted above and that gathering agent is authorized to transport the percentage of oil produced from the above described property and that this authorization will be valid until further notice to the transporter named herein or until cancelled by the Oil Conservation Commission of New Mexico.

Executed this the 13 day of December, 1941

SKELLY OIL CO., operator for

(Company or Operator)

GEO. F. GETTY, INC.

By J. N. Dunlavy

Title District Supt.

State of New Mexico

County of Lea

Before me, the undersigned authority, on this day personally appeared J N Dunlavy known to me to be the person whose name is subscribed to the above instrument, who being by me duly sworn on oath states that he is authorized to make this report and has knowledge of the facts stated herein and that said report is true and correct.

Subscribed and sworn to before me, this the 13 day of December, 1941

Notary Public in and for Lea County, nm

Approved: DEC 23 1941, 1941

OIL CONSERVATION COMMISSION

By Roy Yarrrough

OIL & GAS INSPECTOR

(See Instructions on Reverse Side)

Commission expires Dec. 17, 1944

REC'D

NEW MEXICO OIL CONSERVATION COMMISSION

Santa Fe, New Mexico

JAN 27 1937

Oil & Gas Inspector

MISCELLANEOUS REPORTS ON WELLS

JAN 30 1937



RECEIVED

Submit this report in triplicate to the Oil Conservation Commission or its proper agent within ten days after the work specified is completed. It should be signed and sworn to before a notary public for reports on beginning drilling operations, results of shooting well, results of test of casing shut-off, result of plugging of well, and other important operations, even though the work was witnessed by an agent of the Commission. Reports on minor operations need not be signed and sworn to before a notary public. See additional instructions in the Rules and Regulations of the Commission.

Indicate nature of report by checking below:

REPORT ON BEGINNING DRILLING OPERATIONS		REPORT ON REPAIRING WELL	
REPORT ON RESULT OF SHOOTING OR CHEMICAL TREATMENT OF WELL	X	REPORT ON PULLING OR OTHERWISE ALTERING CASING	
REPORT ON RESULT OF TEST OF CASING SHUT-OFF		REPORT ON DEEPENING WELL	
REPORT ON RESULT OF PLUGGING OF WELL			

Carlsbad, New Mexico January 8, 1937

OIL CONSERVATION COMMISSION,
SANTA FE, NEW MEXICO.

Gentlemen:

Following is a report on the work done and the results obtained under the heading noted above at the _____
George F. Getty Oil Company Hardy Well No. 2 in the _____
 _____ Company or Operator _____ Lease _____
SW¹/₄ SE¹/₄ of Sec. 20, T. 21 S, R. 37 E, N. M. P. M.,
Hardy Field, Lea County.

The dates of this work were as follows: Acid treated December 30, 1936. Shot January 3, 1937
 Notice of intention to do the work was [was not] submitted on Form C-102 on December 29 19 36
 and approval of the proposed plan was [was not] obtained. (Cross out incorrect words.)

DETAILED ACCOUNT OF WORK DONE AND RESULTS OBTAINED

No results from acid treatment. Well flowed 44 barrels in first 24 hours
 after shot on January 3rd with 240 quarts of nitro.

Witnessed by _____ Name _____ Company _____ Title _____

Subscribed and sworn before me this _____

23rd day of January, 19 37

Gerrie Douglas
 Notary Public

My commission expires FEB 28 1940

I hereby swear or affirm that the information given above is true and correct.

Name Les R. ManningPosition SuperintendentRepresenting George F. Getty Oil Company
Company or OperatorAddress Carlsbad, New Mexico

Remarks:

J. Vesely
 Oil & Gas Inspector

JAN 28 1937

NEW MEXICO OIL CONSERVATION COMMISSION

Santa Fe, New Mexico

REC'D

JAN 27 1937

OIL & GAS DEPARTMENT

REQUEST FOR PERMISSION TO CONNECT WITH PIPE LINE

This request should be SUBMITTED IN TRIPLICATE. See instructions in the Rules and Regulations of the Commission.

Carlsbad, New Mexico

Place

January 6, 1937

Date

OIL CONSERVATION COMMISSION,

Santa Fe, New Mexico.

Gentlemen:

Permission is requested to connect George F. Getty Oil Company Hardy
Company or Operator LeaseWells No. 2 in SW 1/4 SE 1/4 of Sec. 20, T. 21 S, R. 37 E, N. M. P. M.,Hardy Field, Lea County, with the pipe line of theShell Houston, Texas
Pipe Line Co. AddressStatus of land (State, Government or privately owned) Privately ownedLocation of tank battery 660' from the South and 1330' from the East line of Section 20.Description of tanks 2 - 500 barrels tanksLogs of the above wells were filed with the Oil Conservation Commission January 6, 1937All other requirements of the Commission have [initials] been complied with. (Cross out incorrect words.)

Additional information:

ORIGINAL

Yours truly,

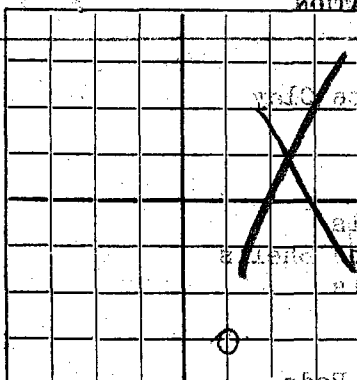
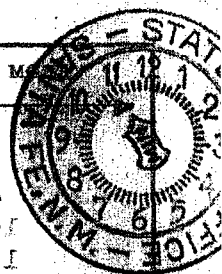
Permission is hereby granted to make pipe line connections requested above.

OIL CONSERVATION COMMISSION,

By E. H. WellsTitle State SealersDate Feb. 3, 1937George F. Getty Oil Company
Owner or OperatorBy Leo R. ManningPosition SuperintendentAddress Carlsbad, New Mexico

AN 27 1937

RECEIVED



NEW MEXICO OIL CONSERVATION COMMISSION

Santa Fe, New Mexico

WELL RECORD

Mail to Oil Conservation Commission, Santa Fe, New Mexico, or its proper agent not more than twenty days after completion of well. Follow instructions in the Rules and Regulations of the Commission. Indicate questionable data by following it with (?). SUBMIT IN TRIPLICATE.

ORIGINAL

AREA 640 ACRES
LOCATE WELL CORRECTLYGeorge F. Getty Oil Company
Company or Operator

Well No. 2

in SW SE

of Sec. 20

T. 21 S

R. 37 E, N. M. P. M., Hardy Field, Lee County.

Well is 4620 feet south of the North line and 1980 feet west of the East line of Section 20

If State land the oil and gas lease is No. Assignment No.

If patented land the owner is Dayton C. Hardy, Address Eunice, New Mexico

If Government land the permittee is, Address

The Lessee is George F. Getty Oil Company, Address Carlsbad, New Mexico

Drilling commenced December 3, 1936. Drilling was completed December 29, 1936

Name of drilling contractor Two-States Drilling Company, Address Dallas, Texas

Elevation above sea level at top of casing 3497 feet.

The information given is to be kept confidential until 19

OIL SANDS OR ZONES

No. 1, from 3700 to 3800 No. 4, from to

No. 2, from to No. 5, from to

No. 3, from to No. 6, from to

IMPORTANT WATER SANDS

Include data on rate of water inflow and elevation to which water rose in hole.

No. 1, from to feet.

No. 2, from to feet.

No. 3, from to feet.

No. 4, from to feet.

CASING RECORD

SIZE	WEIGHT PER FOOT	THREADS PER INCH	MAKE	AMOUNT	KIND OF SHOE	CUT & FILLED FROM	PERFORATED FROM TO	PURPOSE
900	38	8	Std.	242	Guide			Water shut off.
5 1/2	15	10	Seamless 3661		Float			Production

MUDDING AND CEMENTING RECORD

SIZE OF HOLE	SIZE OF CASING	WHERE SET	NO. SACKS OF CEMENT	METHOD USED	MUD GRAVITY	AMOUNT OF MUD USED
11"	8 5/8	242	150	Halliburton		
6 3/4	5 1/2	3661	400	Halliburton		

PLUGS AND ADAPTERS

Heaving plug—Material Length Depth Set

Adapters—Material Size

RECORD OF SHOOTING OR CHEMICAL TREATMENT

SIZE	SHELL USED	EXPLOSIVE OR CHEMICAL USED	QUANTITY	DATE	DEPTH SHOT OR TREATED	DEPTH CLEANED OUT
------	------------	----------------------------	----------	------	-----------------------	-------------------

No. 3, from _____ to _____ feet.
No. 4, from _____ to _____ feet.

CASING RECORD

SIZE	WEIGHT PER FOOT	THREADS PER INCH	MAKE	AMOUNT	KIND OF SHOE	CUT & FILLED FROM	PERFORATED FROM TO	PURPOSE
90	38	8	Std.	242	Guide			Water shut off.
5 1/2	15	10	Seamless	3661	Float			Production

MUDDING AND CEMENTING RECORD

SIZE OF HOLE	SIZE OF CASING	WHERE SET	NO. SACKS OF CEMENT	METHOD USED	MUD GRAVITY	AMOUNT OF MUD USED
11"	8 5/8	242	150	Halliburton		
6 3/4	5 1/2	3661	400	Halliburton		

PLUGS AND ADAPTERS

Heaving plug—Material _____ Length _____ Depth Set _____
Adapters—Material _____ Size _____

RECORD OF SHOOTING OR CHEMICAL TREATMENT

SIZE	SHELL USED	EXPLOSIVE OR CHEMICAL USED	QUANTITY	DATE	DEPTH SHOT OR TREATED	DEPTH CLEANED OUT
		Acid	4000 Gals.	12-30	3661-3800	Bottom
3"		Nitro	240 Qts.	1-3-37	3700-3800	Bottom

Results of shooting or chemical treatment _____ No test after acid treatment. After shot flowed 5 barrels oil in 1' 30". Estimate three to four million gas.

RECORD OF DRILL-STEM AND SPECIAL TESTS

If drill-stem or other special tests or deviation surveys were made, submit report on separate sheet and attach hereto.

TOOLS USED

Rotary tools were used from _____ 0 _____ feet to _____ 3800 _____ feet, and from _____ feet to _____ feet
Cable toops were used from _____ feet to _____ feet, and from _____ feet to _____ feet

PRODUCTION

Put to producing _____ January 6, _____, 19 37
The production of the first 24 hours was _____ 44 _____ barrels of fluid of which _____ 100 _____ % was oil; _____ % emulsion; _____ % water; and _____ % sediment. Gravity, Be _____ 33
If gas well, cu. ft. per 24 hours _____ Gallons gasoline per 1,000 cu. ft. of gas _____
Rock pressure, lbs. per sq. in. _____ 200 _____

EMPLOYEES

Chambers _____, Driller _____ Riggs _____, Driller
Darnell _____, Driller _____ Bodkins _____, Driller

FORMATION RECORD ON OTHER SIDE

I hereby swear or affirm that the information given herewith is a complete and correct record of the well and all work done on it so far as can be determined from available records.

Subscribed and sworn to before me this _____ 27th _____
day of _____ January _____, 19 37

Notary Public
My Commission expires _____ FEB 28 1940 _____
Carlsbad, New Mexico January 6, 1937
Name _____
Position _____ Superintendent _____
Representing _____ George F. Getty Oil Company _____
Company or Operator _____
Address _____ Carlsbad, New Mexico _____



FORMATION RECORD

FORM 6-105

NEW MEXICO OIL CONSERVATION COMMISSION

FORMATION

0
45
100
165
263
360
700

35
100
165
263
360
700
1221

WELL RECORD

35
55
98
97
340
521

Caliche and Surface Clay
Sand and Shells
Sand
Red Bed
Red Beds and Shells
Red Beds, Shale and Shells
Red Beds and Shells

1221
1260
1282

1282
1432
2400
2490
2490
2618
2951
2990
3385
3800

35
83
156
968
90
128
333
59
395
415

Red Beds
Anhydrite
Anhydrite and Red Beds
Salt and Anhydrite
Salt, Potash and Anhydrite
Anhydrite
Lime and Anhydrite
Lime
Lime and Anhydrite
Lime

1282
1432
2400
2490
2490
2618
2951
2990
3385
3800

1282
1432
2400
2490
2490
2618
2951
2990
3385
3800

156
968
90
128
333
59
395
415

Anhydrite and Red Beds
Salt and Anhydrite
Salt, Potash and Anhydrite
Anhydrite
Lime and Anhydrite
Lime
Lime and Anhydrite
Lime

1432
2400
2490
2618
2951
2990
3385
3800

2400
2490
2618
2951
2990
3385
3800

90
128
333
59
395
415

Salt and Anhydrite
Salt, Potash and Anhydrite
Anhydrite
Lime and Anhydrite
Lime
Lime and Anhydrite
Lime

2490
2618
2951
2990
3385
3800

2618
2951
2990
3385
3800

128
333
59
395
415

Anhydrite
Lime and Anhydrite
Lime
Lime and Anhydrite
Lime

2990
3385
3800

3385
3800

395
415

Lime and Anhydrite
Lime

3385
3800

3800

415

Lime

3800

3800

415

Lime

3800

3800

415

Lime

3800

3800

415

Lime

3800

3800

415

Lime

3800

3800

415

Lime

3800

3800

415

Lime

3800

3800

415

Lime

3800

3800

415

Lime

3800

3800

415

Lime

3800

3800

415

Lime

3800

3800

415

Lime

3800

3800

415

Lime

3800

3800

415

Lime

3800

3800

415

Lime

3800

3800

415

Lime

3800

3800

415

Lime

3800

3800

415

Lime

3800

3800

415

Lime

3800

3800

415

Lime

3800

3800

415

Lime

3800

3800

415

Lime

3800

3800

415

Lime

3800

3800

415

Lime

3800

3800

415

Lime

3800

3800

415

Lime

3800

3800

415

Lime

3800

3800

415

Lime

REC'D

NEW MEXICO OIL CONSERVATION COMMISSION

Santa Fe, New Mexico

JAN 27 1937
Oil & Gas Inspector

MISCELLANEOUS NOTICES

Submit this notice in triplicate to the Oil Conservation Commission or its proper agent before the work specified is to begin. A copy will be returned to the sender on which will be given the approval, with any modifications considered advisable, or the rejection by the Commission or its agent, of the plan submitted. The plan as approved should be followed, and work should not begin until approval is obtained. See additional instructions in the Rules and Regulations of the Commission.

Indicate nature of notice by checking below:

NOTICE OF INTENTION TO TEST CASING SHUT-OFF		NOTICE OF INTENTION TO SHOOT OR CHEMICALLY TREAT WELL	X
NOTICE OF INTENTION TO CHANGE PLANS		NOTICE OF INTENTION TO PULL OR OTHERWISE ALTER CASING	
NOTICE OF INTENTION TO REPAIR WELL		NOTICE OF INTENTION TO PLUG WELL	
NOTICE OF INTENTION TO DEEPEN WELL			

Carlsbad, New Mexico

December 29, 1936

OIL CONSERVATION COMMISSION,

Santa Fe, New Mexico.

Gentlemen:

Following is a notice of intention to do certain work as described below at the

George F. Getty Oil Company Hardy Well No. 2 in SW¹ SE¹
 Company or Operator Lease
 of Sec. 20, T. 21 S, R. 37 E, N. M. P. M., Hardy Field,
Lee County.

FULL DETAILS OF PROPOSED PLAN OF WORK

FOLLOW INSTRUCTIONS IN THE RULES AND REGULATIONS OF THE COMMISSION

We propose to treat with 4,000 gallons of acid and if we get no results
 will shoot with 240 quarts of Nitro.

ORIGINAL

Approved JAN 28 1937, 19____
 except as follows:

George F. Getty Oil Company
 Company or Operator
 By Geo. R. Manning
 Position Superintendent
 Send communications regarding well to
 Name George F. Getty Oil Company
 Address Box 990
Carlsbad, New Mexico

OIL CONSERVATION COMMISSION

By

Title

RECD

NEW MEXICO OIL CONSERVATION COMMISSION

Santa Fe, New Mexico

JAN 27 1937

Oil & Gas Department

MISCELLANEOUS REPORTS ON WELLS

Submit this report in triplicate to the Oil Conservation Commission or its proper agent within ten days after the work specified is completed. It should be signed and sworn to before a notary public for reports on beginning drilling operations, results of shooting well, results of test of casing shut-off, result of plugging of well, and other important operations, even though the work was witnessed by an agent of the Commission. Reports on minor operations need not be signed and sworn to before a notary public. See additional instructions in the Rules and Regulations of the Commission.

Indicate nature of report by checking below:

REPORT ON BEGINNING DRILLING OPERATIONS		REPORT ON REPAIRING WELL	
REPORT ON RESULT OF SHOOTING OR CHEMICAL TREATMENT OF WELL		REPORT ON PULLING OR OTHERWISE ALTERING CASING	
REPORT ON RESULT OF TEST OF CASING SHUT-OFF <i>5/2</i>	<i>X</i>	REPORT ON DEEPENING WELL	
REPORT ON RESULT OF PLUGGING OF WELL			

Carlsbad, New Mexico

Place

December 28, 1936

Date

OIL CONSERVATION COMMISSION,
SANTA FE, NEW MEXICO.

Gentlemen:

Following is a report on the work done and the results obtained under the heading noted above at the

George F. Getty Oil Company

Company or Operator

Hardy

Lease

Well No. 2 in the

SW $\frac{1}{4}$ SE $\frac{1}{4}$

of Sec. 20

T. 21 S

R. 37 E

N. M. P. M.,

Hardy

Field,

Lea

County.

The dates of this work were as follows:

Notice of intention to do the work was ~~was not~~ submitted on Form C-102 on December 20 19 36and approval of the proposed plan ~~was~~ [was not] obtained. (Cross out incorrect words.)

DETAILED ACCOUNT OF WORK DONE AND RESULTS OBTAINED

Tested with 1200 pounds pressure for one hour both before and after drilling plug and found shut off O.K.

ORIGINAL

Witnessed by _____
Name Company Title

Subscribed and sworn before me this _____

23rd day of January, 1937

Jessie Douglas
Notary Public

My commission expires FEB 28 1940

I hereby swear or affirm that the information given above is true and correct.

Name *Leo R. Manning*

Position Superintendent

Representing George F. Getty Oil Company
Company or Operator

Address Carlsbad, New Mexico

Remarks:

APPROVED

BY

Title

JAN 28 1937

RECEIVED

RECEIVED

NEW MEXICO OIL CONSERVATION COMMISSION

Santa Fe, New Mexico

MISCELLANEOUS NOTICES

JAN 27 1937

Oil & Gas Inspector

Submit this notice in triplicate to the Oil Conservation Commission or its proper agent before the work specified is to begin. A copy will be returned to the sender on which will be given the approval, with any modifications considered advisable, or the rejection by the Commission or its agent, of the plan submitted. The plan as approved should be followed, and work should not begin until approval is obtained. See additional instructions in the Rules and Regulations of the Commission.

Indicate nature of notice by checking below:

NOTICE OF INTENTION TO TEST CASING SHUT-OFF	<input checked="" type="checkbox"/>	NOTICE OF INTENTION TO SHOOT OR CHEMICALLY TREAT WELL	
NOTICE OF INTENTION TO CHANGE PLANS		NOTICE OF INTENTION TO PULL OR OTHERWISE ALTER CASING	
NOTICE OF INTENTION TO REPAIR WELL		NOTICE OF INTENTION TO PLUG WELL	
NOTICE OF INTENTION TO DEEPEN WELL			

Carlsbad, New Mexico

Place

December 20, 1936

Date

OIL CONSERVATION COMMISSION,

Santa Fe, New Mexico.

Gentlemen:

Following is a notice of intention to do certain work as described below at the

George F. Getty Oil Company Hardy Well No. 2 in SW $\frac{1}{4}$ SE $\frac{1}{4}$
 Company or Operator Lease
 of Sec. 20, T. 21 S, R. 37 E, N. M. P. M., Hardy Field,
 Lea County.

FULL DETAILS OF PROPOSED PLAN OF WORK

FOLLOW INSTRUCTIONS IN THE RULES AND REGULATIONS OF THE COMMISSION

Cemented 3661 feet 5 $\frac{1}{2}$ " OD casing with 400 sacks cement. Will test casing
 shut off December 27, 1936

ORIGINAL

Approved JAN 28 1937, 19____
 except as follows:

OIL CONSERVATION COMMISSION,

By [Signature]Title Oil & Gas Inspector

George F. Getty Oil Company

Company or Operator

By [Signature]Position Supertendant

Send communications regarding well to

Name George F. Getty Oil CompanyAddress Box 990Carlsbad, New Mexico

REC'D

NEW MEXICO OIL CONSERVATION COMMISSION

Santa Fe, New Mexico

RECEIVED

OIL & Gas Inspection MISCELLANEOUS REPORTS ON WELLS

Submit this report in triplicate to the Oil Conservation Commission or its proper agent within ten days after the work specified is completed. It should be signed and sworn to before a notary public for reports on beginning drilling operations, results of shooting well, results of test of casing shut-off, result of plugging of well, and other important operations, even though the work was witnessed by an agent of the Commission. Reports on minor operations need not be signed and sworn to before a notary public. See additional instructions in the Rules and Regulations of the Commission.

Indicate nature of report by checking below:

REPORT ON BEGINNING DRILLING OPERATIONS	<input checked="" type="checkbox"/>	REPORT ON REPAIRING WELL	
REPORT ON RESULT OF SHOOTING OR CHEMICAL TREATMENT OF WELL		REPORT ON PULLING OR OTHERWISE ALTERING CASING	
REPORT ON RESULT OF TEST OF CASING SHUT-OFF		REPORT ON DEEPENING WELL	
REPORT ON RESULT OF PLUGGING OF WELL			

Carlsbad, N. M.

Place

Dec. 5th, 1936

Date

OIL CONSERVATION COMMISSION,
SANTA FE, NEW MEXICO.

Gentlemen:

Following is a report on the work done and the results obtained under the heading noted above at the

George F. Getty Oil Company Hardy Well No. 2 in the
Company or Operator Lease
SW 1/4 SE of Sec. 20, T. 21 S, R. 37 E, N. M. P. M.,
Hardy Field, Lea County.

The dates of this work were as follows: 12-3-36

Notice of intention to do the work was [~~was not~~] submitted on Form C-102 on Dec. 1, 1936
and approval of the proposed plan was [~~was not~~] obtained. (Cross out incorrect words.)

DETAILED ACCOUNT OF WORK DONE AND RESULTS OBTAINED

Spudded on December 3rd, 1936

ORIGINAL

Witnessed by _____
Name Company Title

Subscribed and sworn before me this 23rdday of January, 19 37

Genie Douglas
Notary Public

My commission expires FEB 28 1940

I hereby swear or affirm that the information given above is true and correct.

Name Geo R. ManningPosition SuperintendentRepresenting George F. Getty Oil Company

Company or Operator

Address Carlsbad, New Mexico

Remarks:

APPROVED

BY [Signature] Name

Oil & Gas Inspector Title

JAN 28 1937

RECD

NEW MEXICO OIL CONSERVATION COMMISSION

Santa Fe, New Mexico

Oil & Gas Inspector

MISCELLANEOUS REPORTS ON WELLS

Submit this report in triplicate to the Oil Conservation Commission or its proper agent within ten days after the work specified is completed. It should be signed and sworn to before a notary public for reports on beginning drilling operations, results of shooting well, results of test of casing shut-off, result of plugging of well, and other important operations, even though the work was witnessed by an agent of the Commission. Reports on minor operations need not be signed and sworn to before a notary public. See additional instructions in the Rules and Regulations of the Commission.

Indicate nature of report by checking below:

REPORT ON BEGINNING DRILLING OPERATIONS		REPORT ON REPAIRING WELL	
REPORT ON RESULT OF SHOOTING OR CHEMICAL TREATMENT OF WELL		REPORT ON PULLING OR OTHERWISE ALTERING CASING	
REPORT ON RESULT OF TEST OF CASING SHUT-OFF <i>85/8</i>	<i>X</i>	REPORT ON DEEPENING WELL	
REPORT ON RESULT OF PLUGGING OF WELL			

Carlsbad, New Mexico

Place

December 3, 1936

Date

OIL CONSERVATION COMMISSION,
SANTA FE, NEW MEXICO.

Gentlemen:

Following is a report on the work done and the results obtained under the heading noted above at the

George F. Getty Oil Company

Company or Operator

Hardy

Lease

Well No. 2 in theSW 1/4 SE 1/4of Sec. 20T. 21 SR. 37 E

N. M. P. M.,

Hardy

Field,

Lea

County.

The dates of this work were as follows:

Notice of intention to do the work was ~~was not~~ submitted on Form C-102 on Dec. 3, 19 36and approval of the proposed plan ~~was~~ [was not] obtained. (Cross out incorrect words.)

DETAILED ACCOUNT OF WORK DONE AND RESULTS OBTAINED

Bailed and water shut off O.K. as per regulations.

ORIGINAL

Witnessed by

Name

Company

Title

Subscribed and sworn before me this

23rd day of January, 19 37Genie Douglas

Notary Public

My commission expires

FEB 28 1940

I hereby swear or affirm that the information given above is true and correct.

Name

Leo R. Manning

Position

Superintendent

Representing

George F. Getty Oil Company

Company or Operator

Address

Carlsbad, New Mexico

Remarks:

APPROVED

BY

Name

Oil & Gas Inspector

Title

JAN 28 1937

NEW MEXICO OIL CONSERVATION COMMISSION

Santa Fe, New Mexico

RECEIVED

MISCELLANEOUS NOTICES

Submit this notice in triplicate to the Oil Conservation Commission or its proper agent before the work specified herein begins. A copy will be returned to the sender on which will be given the approval, with any modifications considered advisable, or the rejection by the Commission or its agent, of the plan submitted. The plan as approved shall be followed, and work should not begin until approval is obtained. See additional instructions in the Rules and Regulations of the Commission.

Indicate nature of notice by checking below:

NOTICE OF INTENTION TO TEST CASING SHUT-OFF	<input checked="" type="checkbox"/>	NOTICE OF INTENTION TO SHOOT OR CHEMICALLY TREAT WELL	JAN 30 1937 AM
NOTICE OF INTENTION TO CHANGE PLANS	<input type="checkbox"/>	NOTICE OF INTENTION TO PULL OR OTHERWISE ALTER CASING	
NOTICE OF INTENTION TO REPAIR WELL	<input type="checkbox"/>	NOTICE OF INTENTION TO PLUG WELL	
NOTICE OF INTENTION TO DEEPEN WELL	<input type="checkbox"/>		

Carlsbad, New Mexico December 3, 1936

OIL CONSERVATION COMMISSION,

Santa Fe, New Mexico.

Gentlemen:

Following is a notice of intention to do certain work as described below at the _____

George F. Getty Oil Company Hardy Well No. 2 in SW $\frac{1}{4}$ SE $\frac{1}{4}$
 Company or Operator Lease
 of Sec. 20 T. 21 S R. 37 E N. M. P. M., Hardy Field,
 Lea County.

FULL DETAILS OF PROPOSED PLAN OF WORK

FOLLOW INSTRUCTIONS IN THE RULES AND REGULATIONS OF THE COMMISSION

We cemented 9" OD casing at 242 feet with 150 sacks cement December 23rd, 1936. Will be ready to test December 24, 1936. Will bail and then test as per regulations.

ORIGINAL

Approved _____, 19____
 except as follows:

OIL CONSERVATION COMMISSION,

By _____
 Title _____

George F. Getty Oil Company
 Company or Operator
 By Leo R. Manning
 Position Superintendent
 Send communications regarding well to
 Name George F. Getty Oil Company
 Address Box 990,
Carlsbad, New Mexico

NEW MEXICO OIL CONSERVATION COMMISSION

Santa Fe, New Mexico

NOTICE OF INTENTION TO DRILL

Notice must be given to the Oil Conservation Commission or its proper agent and approval obtained before drilling begins. If changes in the proposed plan are considered advisable, a copy of this notice showing such changes will be returned to the sender. Submit this notice in triplicate. One copy will be returned following approval. See additional instructions in Rules and Regulations of the Commission.

Carlsbad, N. M.

Dec. 1, 1936

OIL CONSERVATION COMMISSION,
Santa Fe, New Mexico

Gentlemen:

You are hereby notified that it is our intention to commence the drilling of a well to be known as

GEORGE F. GETTY OIL COMPANY HARDY

Well No. 2

Company or Operator

Lease

of Sec. 20, T. 21, R. 37, N. M. P. M.,

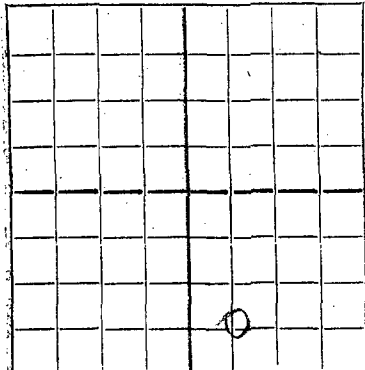
Hardy

Field,

Lea

County.

N.



AREA 640 ACRES
LOCATE WELL CORRECTLY

The well is 660 feet [N.] [E.] of the South line and 1980 feet

[W.] of the East line of Section 20

(Give location from section or other legal subdivision lines. Cross out wrong directions.)

If state land the oil and gas lease is No. Assignment No.

If patented land the owner is Dayton C. Hardy

Address Eunice, New Mexico

If government land the permittee is

Address

The lessee is GEORGE F. GETTY OIL COMPANY

Address Box 990, Carlsbad, New Mexico.

We propose to drill well with drilling equipment as follows: Rotary

The status of a bond for this well in conformance with Rule 39 of the General Rules and Regulations of the Commission is as follows: GEORGE F. GETTY OIL COMPANY BLANKET BOND

We propose to use the following strings of casing and to land or cement them as indicated:

Size of Hole	Size of Casing	Weight Per Foot	New or Second Hand	Depth	Landed or Cemented	Sacks Cement
11" 6-3/4"	8-5/8" 5-1/2"	38# 15#	Second Hand New	300' 3700'	Cemented Cemented	(As per your regulations for wells in this territory.)

If changes in the above plan become advisable we will notify you before cementing or landing casing. We estimate that the first productive oil or gas sand should occur at a depth of about 3700 feet.

Additional information:

Approved DEC 1 1936 19____
except as follows:

Subject to special regulations for drilling and casing wells in this area

OIL CONSERVATION COMMISSION,

By [Signature]

Title Oil & Gas Inspector

Sincerely yours,

GEORGE F. GETTY OIL COMPANY

Company or Operator

By [Signature]

Position ENGINEER

Send communication regarding well to

Name GEORGE F. GETTY OIL COMPANY

Address Box 990, Carlsbad, N. M.

ORIGINAL