

Release May 15, 1985

By Doc

When receive
additional info.

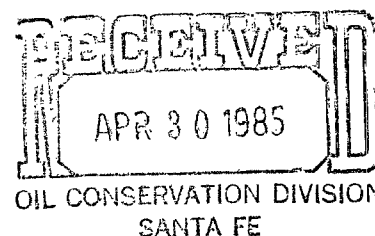
J. McSHANE, INC.
MANAGEMENT - OPERATIONS
OIL • GAS • WATER

NSC - 2048
RULE-1044(E)

April 25, 1985

New Mexico Oil Conservation Commission
P. O. Box 2088
State Land Office Bldg.
Sante Fe, New Mexico 87501

Attn: R. L. Stamets, Director



South Leonard Queen Pool
40 acre dedication

Re: Wood, McShane & Thams
South Leonard Queen Unit
Well #18

SW/4 NW/4
Sect 24, T-26S,
R-37E
Lea County, NM.

Gentlemen:

We are sending you copies of the Form C-101 and its attachments for the above mentioned well as this will be an unorthodox location. The Form C-101 and its attachments have been sent to the district office in Hobbs as well. Please let us know if this will suffice in getting the location approved.

Sincerely,

J. McSHANE, INC. For:

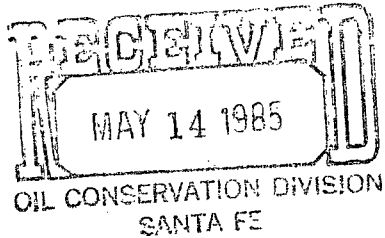
Wood, McShane & Thams

A handwritten signature in cursive script, appearing to read "Earl H. Michie".

Earl H. Michie

EHM/rt

Attachments



J. McSHANE, INC.
MANAGEMENT - OPERATIONS
OIL • GAS • WATER

May 10, 1985

State of New Mexico
Oil Conservation Division
Energy & Minerals Dept.
P. O. Box 2088
Santa Fe, New Mexico 87501

Attn.: David Catanach

RE: Wood, McShane & Thams
South Leonard Queen Unit
Well #13

Gentlemen:

Please find enclosed a plat identifying the boundaries of the South Leonard Queen Unit and indicating the locations of producing and injection wells within the unit.

Wood, McShane & Thams purchased the unit from Sun Oil Company and assumed operations in September, 1984. Well #17 was drilled and completed in December, 1984, with excellent results. Therefore, we feel that a 20-acre well density pattern, as opposed to a 40-acre pattern, will allow a more efficient drainage of the acreage within the unit. It is our intention to develop the unit on a 20-acre well density pattern to provide for a more prolific waterflood.

The well in question, well #18, is well within the boundaries of the unit and therefore, we are the offset operators of the acreage immediately surrounding the well. I hope this information will suffice in order to have this unorthodox location approved.

Sincerely,

J. MCSHANE, INC., FOR
WOOD, MCSHANE & THAMS

Earl H. Michie

Enclosure

TENNECO

TENNECO

AMOCO

USA

14

USA

LEONARD

13

18

LINEBERRY

TENNECO

24

19

AMOCO

US
PARKER

2

2

3

4

5

6

7

8

9

10

SHELL

11

12

13

14

(PROPOSED
WELL)

18

17

SUN
UNION
TEX
AMOCO

15

16

SCARBOROUGH

USA 23

LEGEND

• PRODUCER

26 25

TEXACO

DUBLIN

USA

WOOD, McSHANE & THAMS

SOUTH LEONARD UNIT

T-26-S R-37-E

LEA COUNTY NEW MEXICO

PRODUCTION MAP



▲ INJECTOR



**NEW MEXICO OIL CONSERVATION COMMISSION
WELL LOCATION AND ACREAGE DEDICATION PLAT**

Form C-102
Supersedes C-128
Effective 1-1-65

All distances must be from the outer boundaries of the Section.

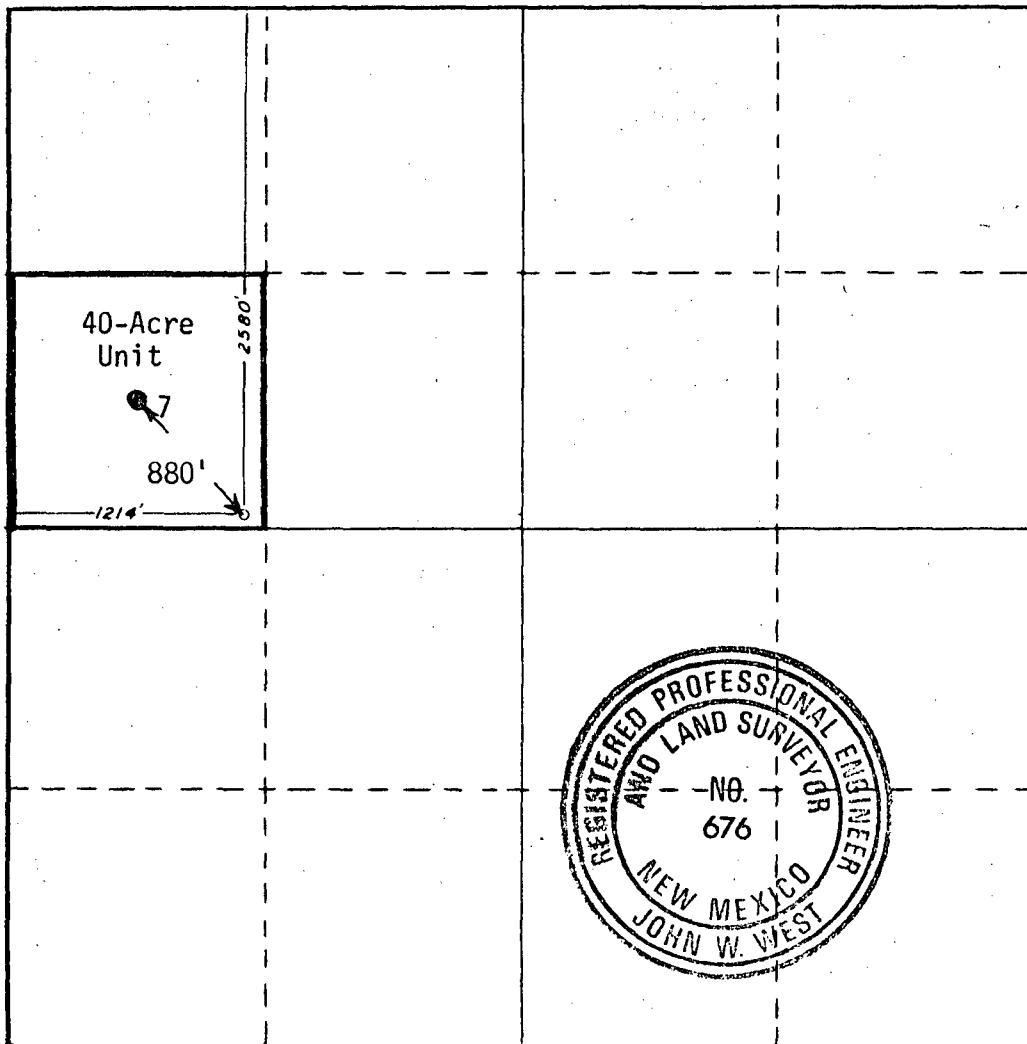
Operator WOOD, MC SHANE & THAMS			Lease SOUTH LEONARD UNIT		Well No. 18
Unit Letter E	Section 24	Township 26S	Range 37E	County LEA	
Actual Footage Location of Well: <div style="display: flex; justify-content: space-between; align-items: center;"> 2580 feet from the NORTH line and 1214 feet from the WEST line </div>					
Ground Level Elev. 2984.3	Producing Formation Queen Sand		Pool Leonard Queen, South		Dedicated Acreage: 40 Acres

1. Outline the acreage dedicated to the subject well by colored pencil or hatchure marks on the plat below.
2. If more than one lease is dedicated to the well, outline each and identify the ownership thereof (both as to working interest and royalty).
3. If more than one lease of different ownership is dedicated to the well, have the interests of all owners been consolidated by communitization, unitization, force-pooling, etc?

☐ Yes ☐ No If answer is "yes," type of consolidation _____

If answer is "no," list the owners and tract descriptions which have actually been consolidated. (Use reverse side of this form if necessary.) _____

No allowable will be assigned to the well until all interests have been consolidated (by communitization, unitization, forced-pooling, or otherwise) or until a non-standard unit, eliminating such interests, has been approved by the Commission.



CERTIFICATION

I hereby certify that the information contained herein is true and complete to the best of my knowledge and belief.

Earl H. Michie

Name
Earl H. Michie
Position
Petroleum Engineer
Company
Wood, McShane & Thams
Date
4-24-85

I hereby certify that the well location shown on this plat was plotted from field notes of actual surveys made by me or under my supervision, and that the same is true and correct to the best of my knowledge and belief.

Date Surveyed
10/20/84

Registered Professional Engineer and/or Land Surveyor

John W. West

Certificate No. **JOHN W. WEST, 676**

RONALD J. EIDSON, 3239

BLOWOUT PREVENTER SKETCH
Wood, McShane & Thams

S. Leonard Queen Well #18
2580' FNL & 1214' FWL
Sec. 24-26S-37E

