

NM1 - 3

MONITORING REPORTS

YEAR(S):

1988-1989

MAP

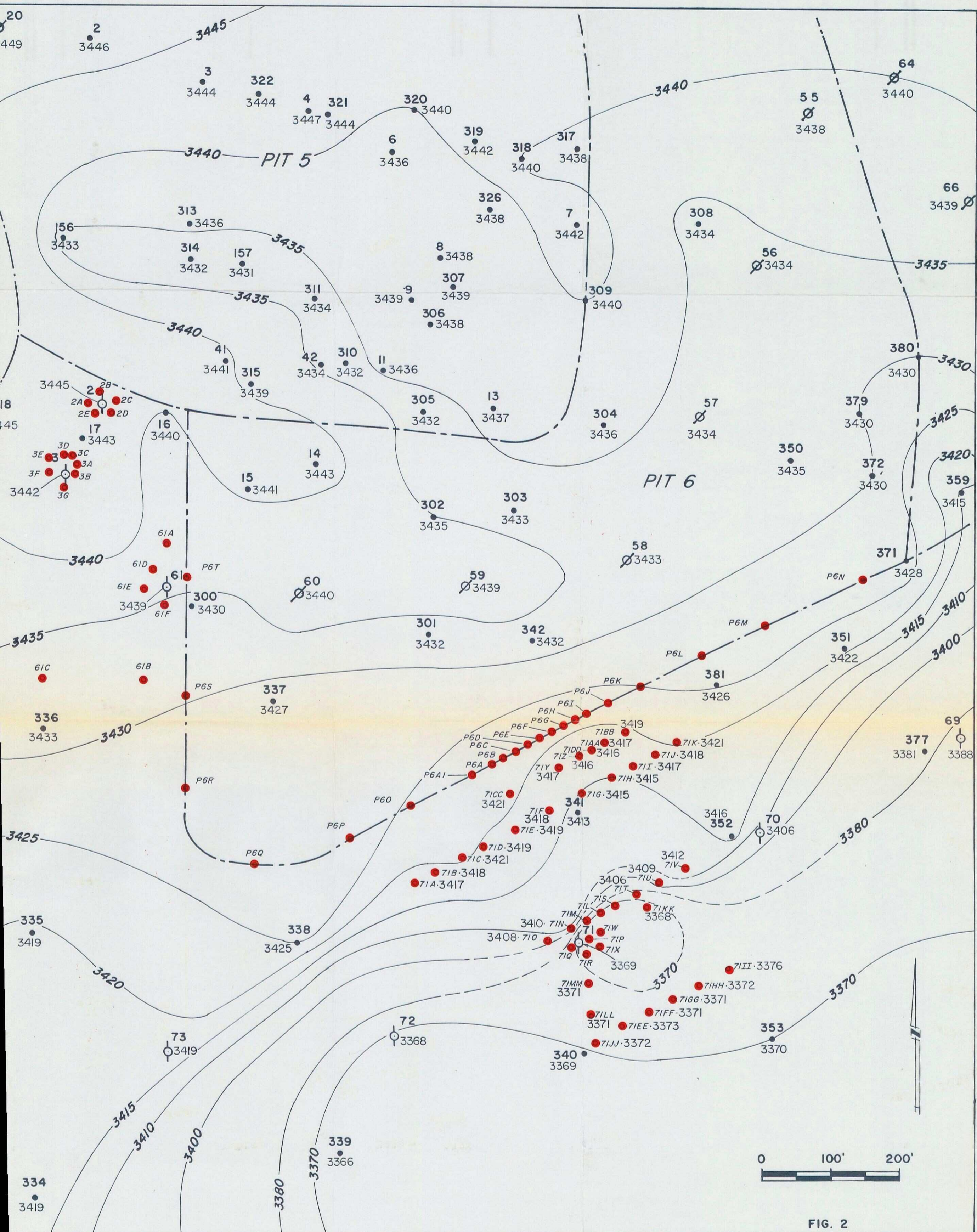


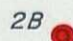



FIG. 2

— L E G E N D —

-  Monitor Well
-  Test hole
-  Bore hole
-  Abandoned Monitor Well

LEA COUNTY, NEW MEXICO

PARABO, INC.

INVESTIGATION OF SALT
WATER IN MH-2,3,6I & 7I

ELEVATION OF
TRIASSIC SURFACE

DATE 1-24-89

REVISED

CHECKED

DRAWN BY

Al Hernandez



REED & ASSOCIATES, INC.

HYDROLOGISTS & ENVIRONMENTAL CONSULTANTS

MIDLAND CORPUS CHRISTI AUSTIN