

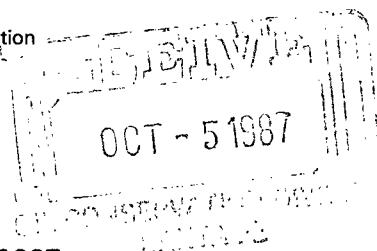
Release Date:  
Oct 5, 1987



By DEC

R. E. Irelan  
Division Manager  
Production Department  
Hobbs Division  
North American Production

Conoco Inc.  
P.O. Box 460  
726 East Michigan  
Hobbs, NM 88240  
(505) 393-4141



September 29, 1987

Mr. David Catanach  
State of New Mexico  
Oil Conservation Division  
P. O. Box 2088  
Santa Fe, NM 87504-2088

NSL-24089  
RULE-104F(I)  
Maljamar Grayburg  
San Andres Pool  
40 Acres  
NW 1/4 SE 1/4  
Sect 22

Dear Mr. Catanach:

Request for Unorthodox Location - MCA Unit No. 378, 2543' FSL and 2625' FEL, Section 22, T-17S, R-32E, Lea County, NM. Maljamar Grayburg/San Andres

Conoco Inc. respectfully requests administrative approval to drill the subject well at an unorthodox location in unit letter J, 2543' FSL & 2625' FEL, Section 22, T-17S, R-32E, Lea County, New Mexico. This well will be drilled on 20-acre spacing as provided for in Order No. 2403, dated December 31, 1962.

The drilling of the MCA Unit No. 378 at a non-standard location is necessary to permit the completion of an efficient production and injection pattern within a pressure maintenance project.

Attached is a plat of the proposed location, Form C-102 showing well location and dedication. There are no offset operators. Please contact Ed Kepford at ext. 120 of this office if you have any further questions.

Yours very truly,

R. E. Irelan

ELK:mgt

Attachments

**NEW MEXICO OIL CONSERVATION COMMISSION  
WELL LOCATION AND ACREAGE DEDICATION PLAT**

Form C-102  
Supersedes C-128  
Effective 1-1-65

All distances must be from the outer boundaries of the Section.

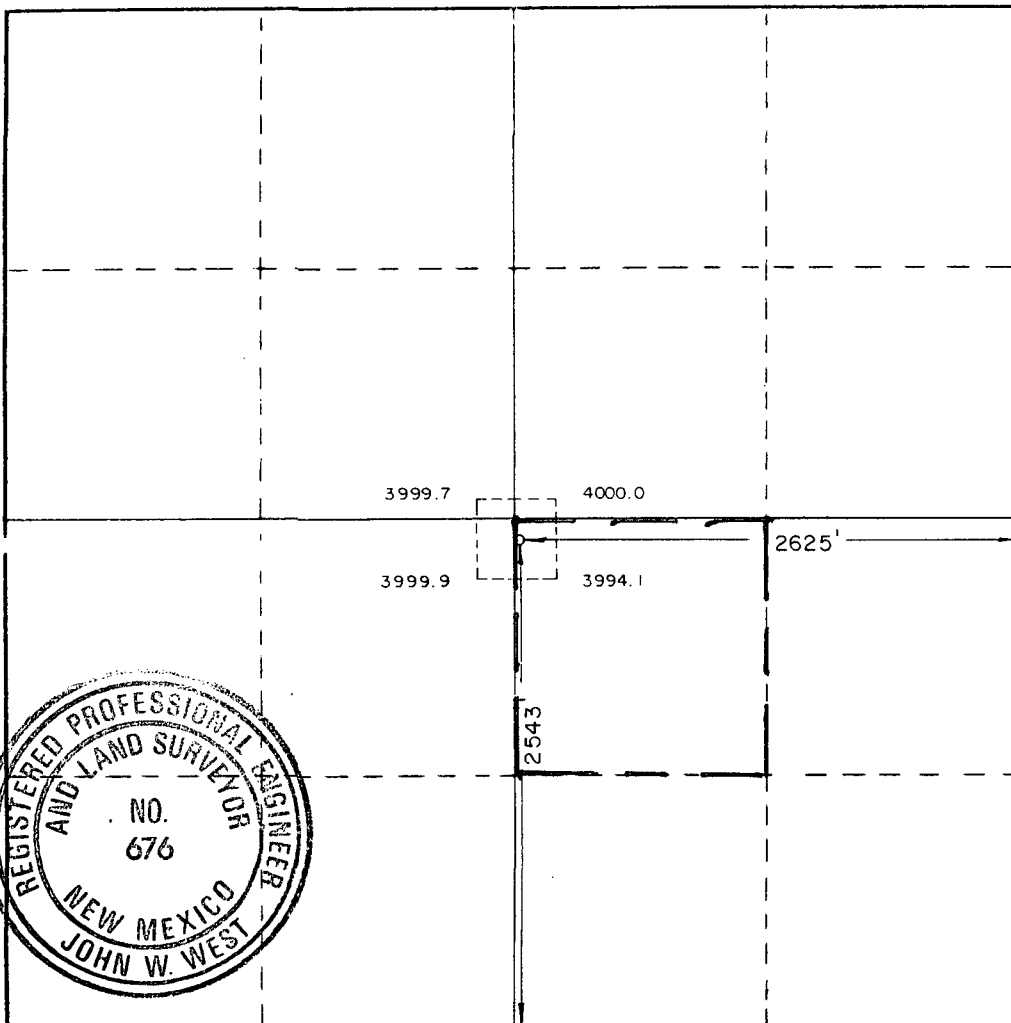
Operator <b>Conoco, Inc.</b>			Lease <b>MCA</b>		Well No. <b>378</b>
Unit Letter <b>J</b>	Section <b>22</b>	Township <b>17 South</b>	Range <b>32 East</b>	County <b>Lea</b>	
Actual Footage Location of Well: <b>2543</b> feet from the <b>South</b> line and <b>2625</b> feet from the <b>East</b> line					
Ground Level Elev. <b>4000.6</b>	Producing Formation <b>Grayburg/San Andres</b>		Pool <b>Maljamar Grayburg/San Andres</b>		Dedicated Acreage: <b>40</b> Acres

1. Outline the acreage dedicated to the subject well by colored pencil or hachure marks on the plat below.
2. If more than one lease is dedicated to the well, outline each and identify the ownership thereof (both as to working interest and royalty).
3. If more than one lease of different ownership is dedicated to the well, have the interests of all owners been consolidated by communitization, unitization, force-pooling, etc?

☒ Yes    ☐ No    If answer is "yes," type of consolidation \_\_\_\_\_

If answer is "no," list the owners and tract descriptions which have actually been consolidated. (Use reverse side of this form if necessary.) \_\_\_\_\_

No allowable will be assigned to the well until all interests have been consolidated (by communitization, unitization, forced-pooling, or otherwise) or until a non-standard unit, eliminating such interests, has been approved by the Commission.



**CERTIFICATION**

I hereby certify that the information contained herein is true and complete to the best of my knowledge and belief.

Name **John W. West**  
Position **Administrative Supervisor**  
Company **Conoco Inc.**

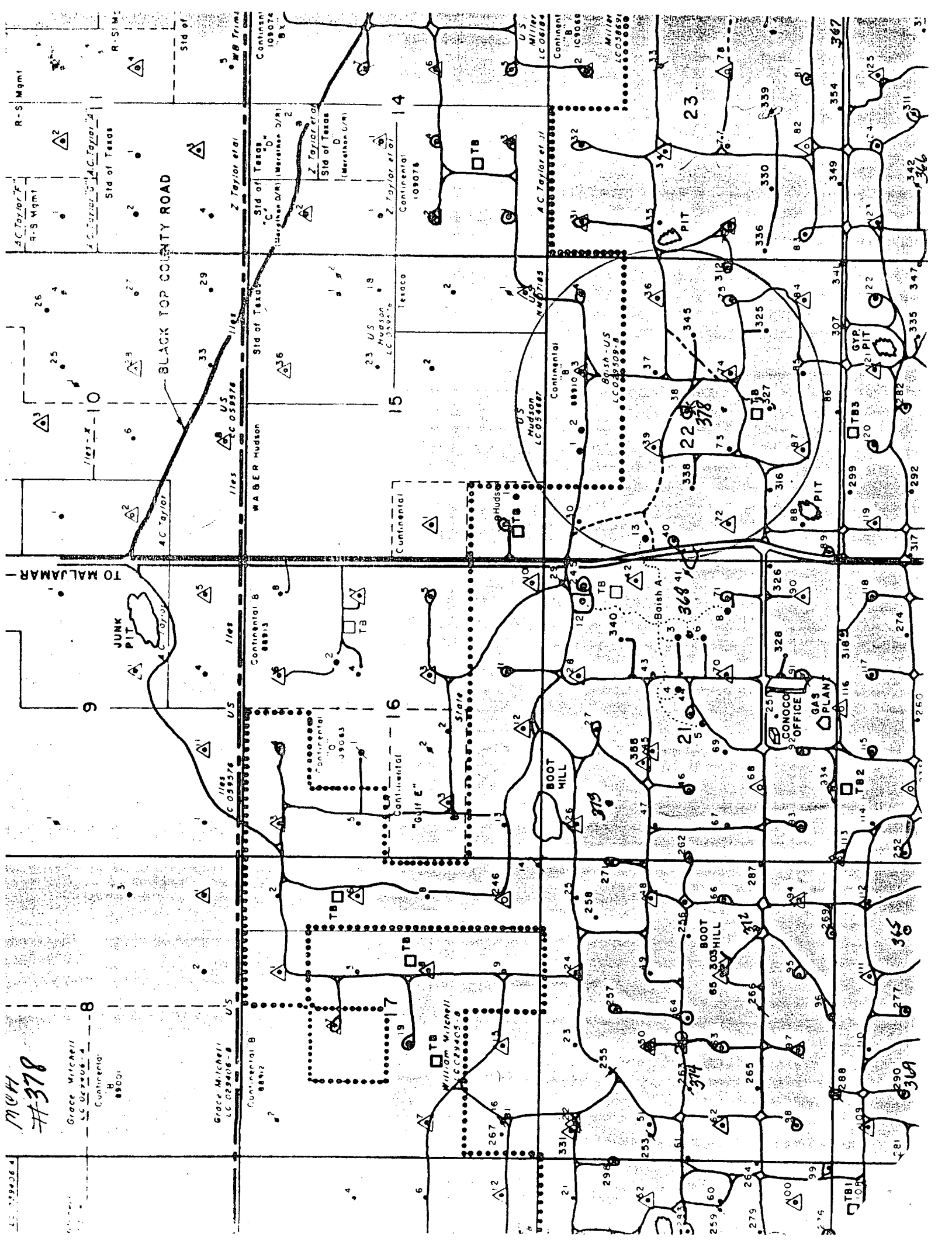
Date **9-29-87**

I hereby certify that the well location shown on this plat was plotted from field notes of actual surveys made by me or under my supervision, and that the same is true and correct to the best of my knowledge and belief.

Date Surveyed **September 3, 1987**

Registered Professional Engineer and/or Land Surveyor

**John W. West**  
Certificate No. **JOHN W. WEST, 676**  
**RONALD J. EIDSON, 3239**



MCH  
#378

Grace Mitchell  
LC 029406-A  
Continental  
B  
89001

Grace Mitchell  
LC 029406-B  
Continental  
B  
89002

William Mitchell  
LC 029405-A  
Continental  
B  
89003

CONOCO  
OFFICE  
GAS  
PLAN

BLACK TOP COUNTY ROAD

JUNK  
PIT

BOOT  
HILL