

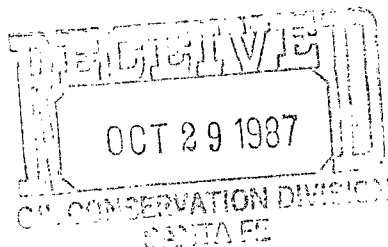


**Sirgo-Collier, Inc.**

P. O. Box 3531, Midland, Texas 79702 (915) 685-0878

October 23, 1987

State of New Mexico  
Energy and Minerals Department  
Oil Conservation Division  
Post Office Box 2088  
Santa Fe, New Mexico 87501



*NSL-2427  
RULE-104F(I)*

*West Dollarhide Queen  
Sand Unit Well No. 92*

*Dollarhide Queen Pool  
40 Acres dec.  
NE 1/4 SE 1/4 Section 31*

Re: Unorthodox Location  
WDQSU ~~31~~-92  
1360' FSL 970' FEL Section 31  
T24S, R38E, Lea County, New Mexico

Gentlemen:

This letter shall serve as our request to have the unorthodox location described above approved by your office.

On the attached plat, you will note our location lies within the unit boundaries of the West Dollarhide Queen Sand Unit. We are requesting approval of this location because it will allow us to establish a more efficient waterflood pattern within the unit.

Should you have additional questions, please call.

Sincerely,

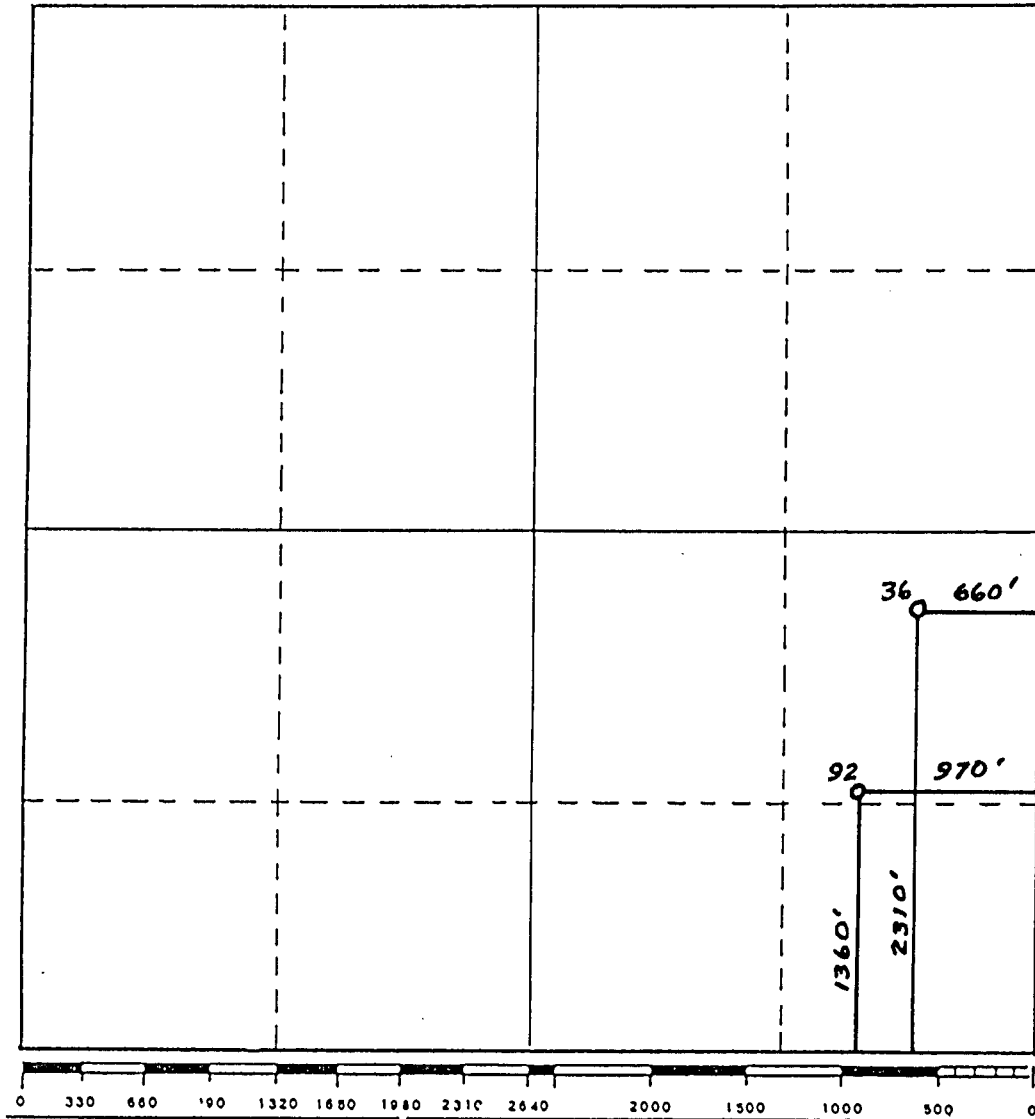
*Amy L. Whitley*

Amy L. Whitley

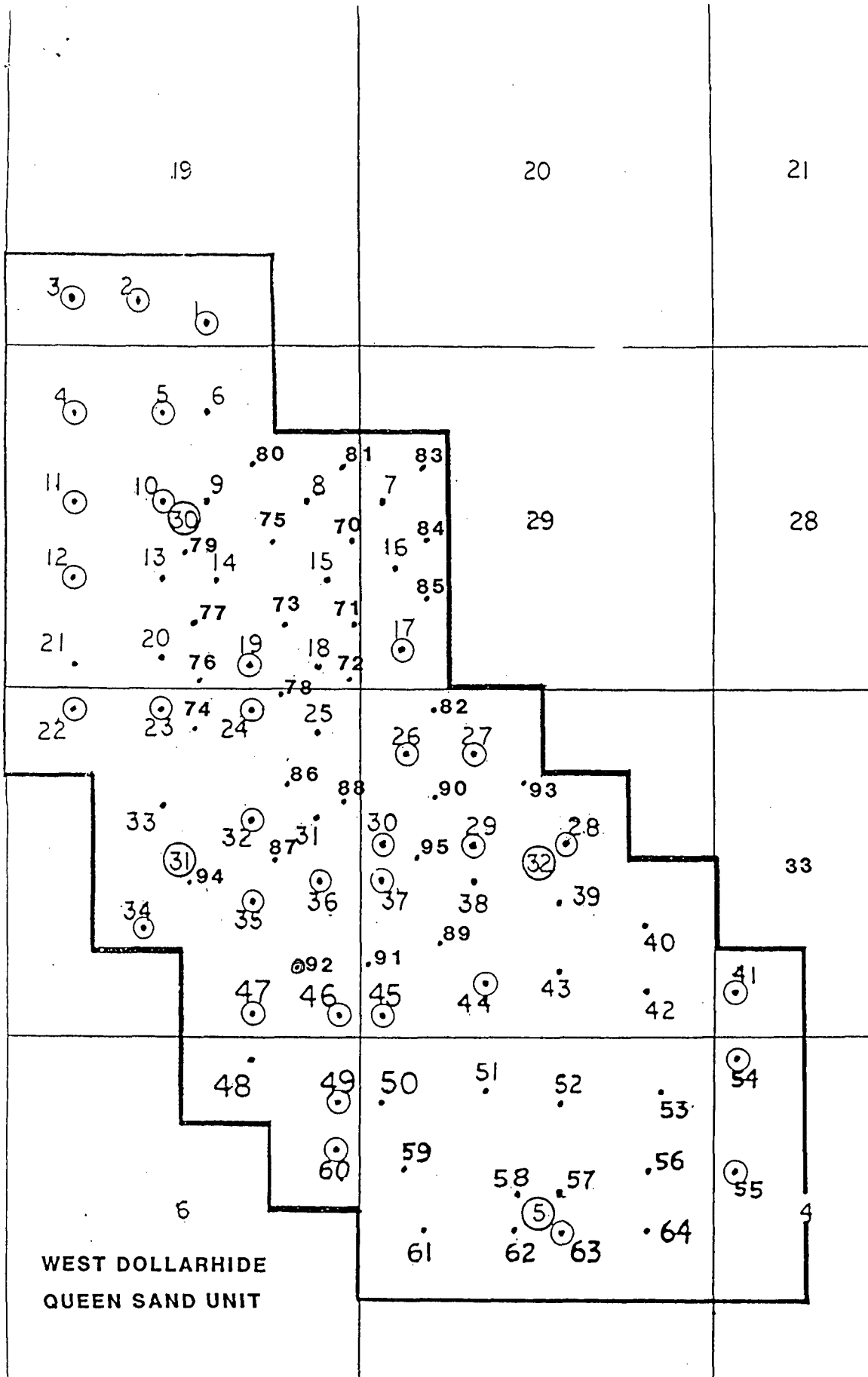
attachments

cc: OCD - Hobbs  
Jerry Sexton

# WELL LOCATION PLAT



Operator: SIRGO-COLLIER, INC. Lease: West Dollarhide Queen Sand Unit  
 Unit Letter: I Section: 31 Township: 24-S Range: 38-E County: Lea  
 Locations: #36: 2310' FSL 660' FEL, #92: 1360' FSL 970' FEL

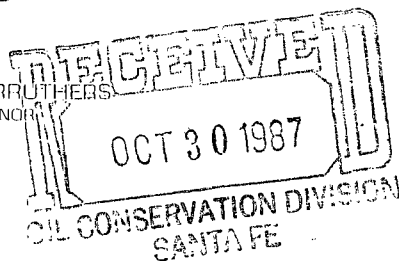


Plat of Unit wells by Unit well number.



STATE OF NEW MEXICO  
ENERGY AND MINERALS DEPARTMENT  
OIL CONSERVATION DIVISION  
HOBBS DISTRICT OFFICE

GARREY CARRUTHERS  
GOVERNOR



10-28-87

POST OFFICE BOX 1980  
HOBBS, NEW MEXICO 88241-1980  
(505) 393-6161

OIL CONSERVATION DIVISION  
P. O. BOX 2088  
SANTA FE, NEW MEXICO 87501

RE: Proposed:

MC \_\_\_\_\_  
DHC \_\_\_\_\_  
NSL ☒ \_\_\_\_\_  
NSP \_\_\_\_\_  
SWD \_\_\_\_\_  
WFX \_\_\_\_\_  
PMX \_\_\_\_\_

Gentlemen:

I have examined the application for the:

*Sargo Collier Inc. West Dollashide Queen Sand Unit #92-I*  
Operator Lease & Well No. Unit S-T-R *31-24-3J*

and my recommendations are as follows:

*OK J.S.*

Yours very truly,

*Jerry Sexton*  
Jerry Sexton  
Supervisor, District 1

/ed