



SIETE OIL & GAS CORPORATION

OIL CONSERVATION DIVISION

Petroleum Building Suite 200
P.O. Box 2523 Roswell, New Mexico 88202, USA
Telephone (505) 622-2202
FAX (505) 622-2297

'90 DEC 18 AM 9 10

December 14, 1990

STATE OF NEW MEXICO
Oil Conservation Division
P.O. Box 2088
Santa Fe, New Mexico 87501

ATTENTION: Mike Stogner

RE: Blackfoot Federal No. 1
Section 17: T22S, R25E
2460' FNL & 330' FWL
Eddy County, New Mexico

Dear Mike,

Siete Oil and Gas Corporation respectfully requests that we be allowed to drill the above captioned well in an unorthodox location. The well was originally staked 2310' FNL & 330' FWL. Due to topographic reasons, Barry Hunt with the Bureau of Land Management requested we move the proposed location to 2460' FNL & 330' FWL.

The new proposed location will not effect other offset operators due to the fact that we hold the acreage surrounding this 40 acre tract. Enclosed is a land map and a topographic map. If you have any questions, call me @ (505) 622-2202.

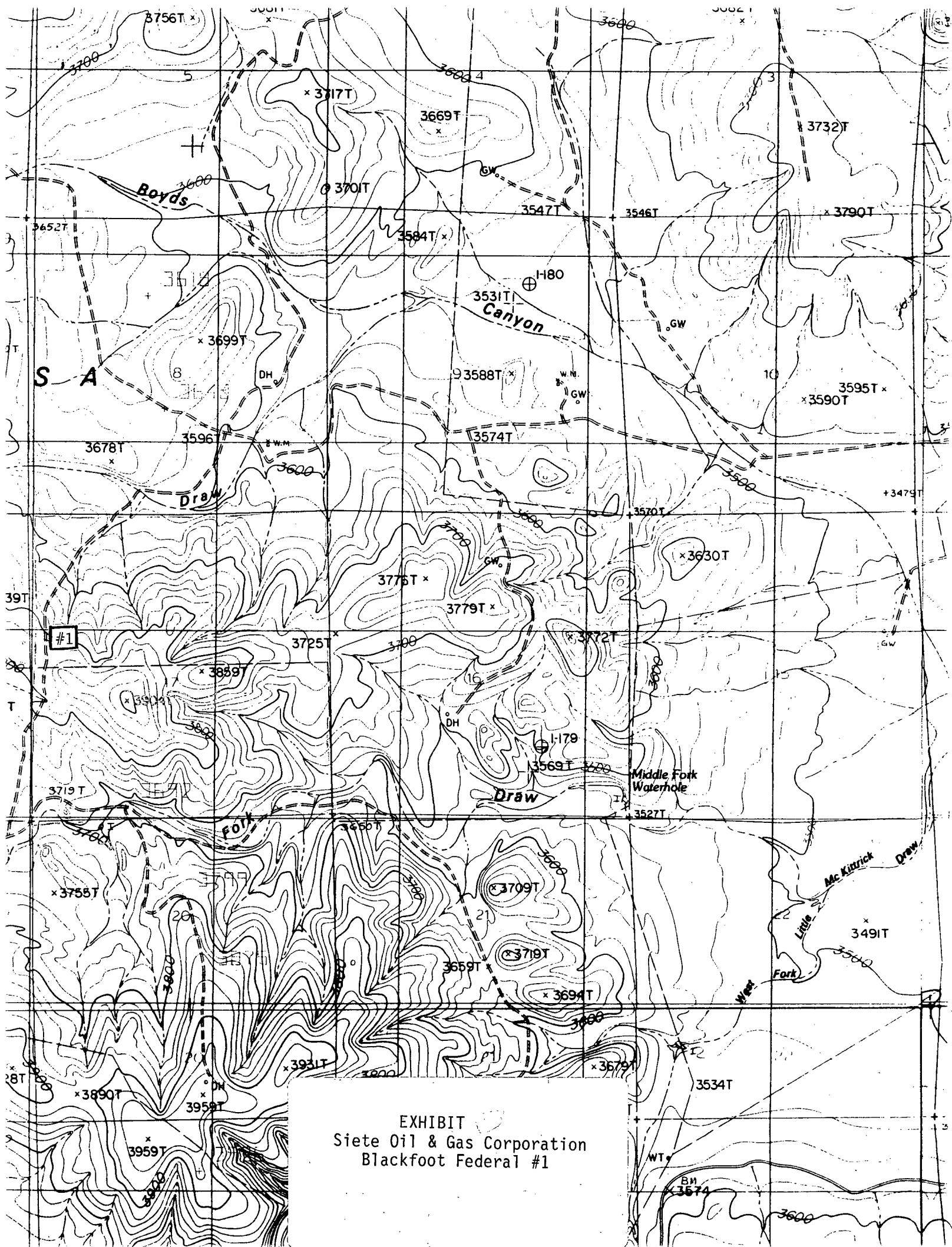
Sincerely,

SIETE OIL AND GAS CORPORATION

BY Cathy Batley-Seely
Cathy Batley-Seely
Drilling Technician

cc:file

Enclosure



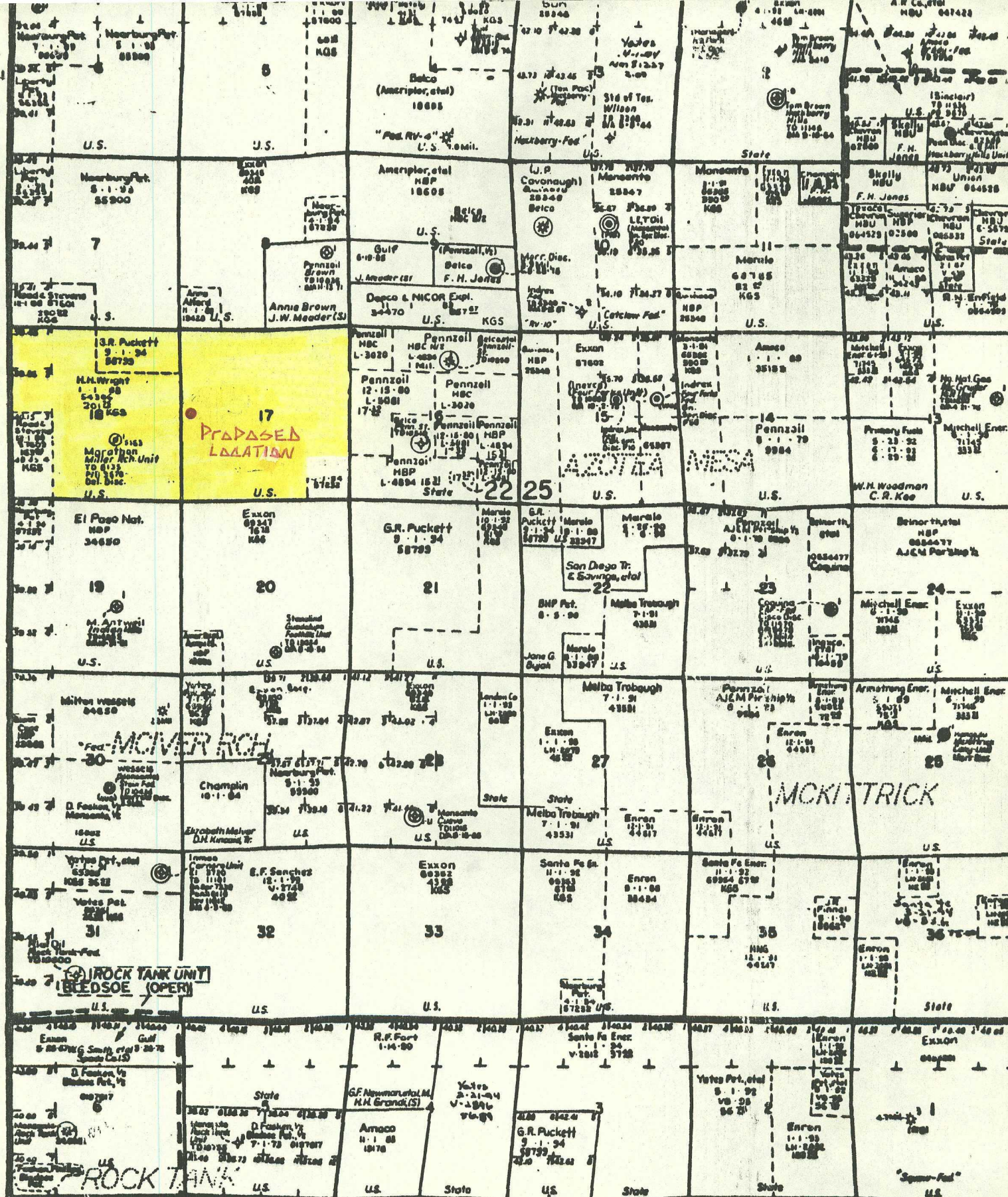


EXHIBIT
Siete Oil & Gas Corporation
Blackfoot Federal #1

NEW MEXICO OIL CONSERVATION COMMISSION
WELL LOCATION AND ACREAGE DEDICATION PLAT

Form C-102
Supersedes C-128
Effective 1-1-65

All distances must be from the outer boundaries of the Section.

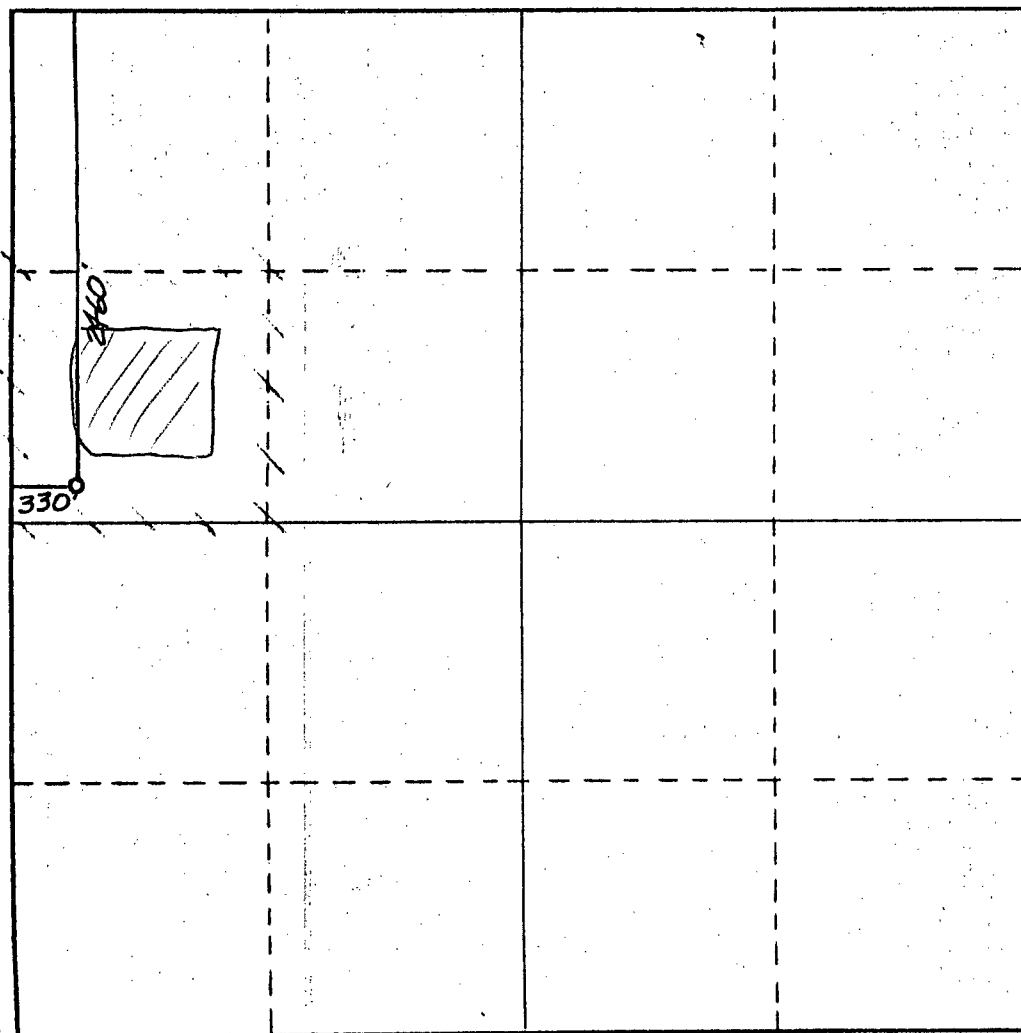
Operator SIETE OIL & GAS CORPORATION			Lease Blackfoot Federal		Well No. 1
Unit Letter E	Section 17	Township 22 South	Range 25 East	County Eddy County, N.M.	
Actual Footage Location of Well: 2460 feet from the North line and 330 feet from the West line					
Ground Level Elev. 3828.	Producing Formation Delaware		Pool Wildcat	Dedicated Acreage: 40 Acres	

1. Outline the acreage dedicated to the subject well by colored pencil or hachure marks on the plat below.
2. If more than one lease is dedicated to the well, outline each and identify the ownership thereof (both as to working interest and royalty).
3. If more than one lease of different ownership is dedicated to the well, have the interests of all owners been consolidated by communitization, unitization, force-pooling, etc?

☐ Yes ☐ No If answer is "yes," type of consolidation _____

If answer is "no," list the owners and tract descriptions which have actually been consolidated. (Use reverse side of this form if necessary.) _____

No allowable will be assigned to the well until all interests have been consolidated (by communitization, unitization, forced-pooling, or otherwise) or until a non-standard unit, eliminating such interests, has been approved by the Commission.



CERTIFICATION

I hereby certify that the information contained herein is true and complete to the best of my knowledge and belief.

Harold D. Justice "B"
Name

Harold D. Justice

Position

V.P. Drilling & Production

Company

Siete Oil and Gas Corporation

Date

April 2, 1990

ANN R. REDDY
I hereby certify that the well location shown on this plat was plotted from field notes of actual surveys made by me or under my supervision, and that the same are true and correct to the best of my knowledge and belief.
REGISTERED PROFESSIONAL ENGINEER

Date Surveyed

March 14, 1990

Registered Professional Engineer and/or Land Surveyor

Ann R. Reddy

Certificate No.

NM P&LS NO. 5412

0 330 660 990 1320 1650 1980 2310 2640 2000 1500 1000 500 0

POOL Revelation - Delaware

TOWNSHIP 22 South

RANGE 25 East

NMPPM

Description: NW $\frac{1}{4}$ SE $\frac{1}{4}$ Sec 18 (R-3681, 3-1-69)

The image displays a uniform, dark gray to black background with a highly textured, grainy appearance. The texture is composed of fine, irregular speckles and noise, giving it the look of a high-magnification scan of a dark, matte surface or a heavily underexposed photograph. There are no discernible shapes, figures, or text present.