



GREENHILL PETROLEUM CORPORATION

OIL CONSERVATION DIVISION
RECEIVED

12777 JONES ROAD, SUITE 375
HOUSTON, TEXAS 77070
TELEPHONE (713) 955-1146
FAX (713) 955-5105

Incorporated in Delaware, U.S.A.

'90 DEC 20 AM 9 17

E-31-165-37E

December 17, 1990

Oil Conservation Division
P.O. Box 2088
Santa Fe, NM 87504-2088

Attn: Mike Stogner

Re: Lovington Paddock
Well No. 88 & 89
Lea County, NM

Enclosed please find the Request for Unorthodox Location covering Well No. 88 and 89. I am also enclosing a plat which shows the location. These two locations are located on a federal tract. I have sent in an Application to drill with the BLM covering these two wells. Please advise if you need additional information.

Sincerely,

Michael J. Newport
Michael J. Newport
Landman

MJN:jb
Enclosure

cc: Hobbs, NM



GREENHILL PETROLEUM CORPORATION

12777 JONES ROAD, SUITE 375
HOUSTON, TEXAS 77070
TELEPHONE (713) 955-1146
FAX (713) 955-5105

Incorporated in Delaware, U.S.A.

November 6, 1990

Oil Conservation Division
State of New Mexico
Energy, Minerals and Natural Resources Dept.
P.O. Box 2088
Santa Fe, New Mexico 87504-2088

Attn: Mike Stogner

Re: Unorthodox Location and Drilling Permit
Proposed Well No. 88
Lovington Paddock
Lea County, New Mexico

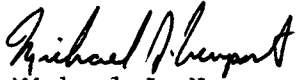
Greenhill Petroleum Corporation respectfully requests the State of New Mexico Oil Conservation Division grant approval of the proposed unorthodox location and the attached permit to drill Well Number 88 in the Lovington Paddock Unit, located in Lea County, New Mexico.

The Lovington Paddock Paddock Unit is presently developed and being waterflooded utilizing a 40-acre well density. It is believed that infill development using a 20-acre well density will improve waterflood sweep efficiency and will increase secondary oil recovery. The proposed location for Well No. 88 is located in the interior of the unit and is not competitive with offset wells outside the unit. Information gathered as a result of drilling this infill well will be utilized in evaluating additional infill development potential in the unit and ultimately may be used to evaluate the feasibility of tertiary recovery.

Greenhill Petroleum Corporation wishes to commence drilling operations on the proposed well as soon as possible and would appreciate a response to this request at your earliest convenience.

Sincerely,

GREENHILL PETROLEUM CORPORATION


Michael J. Newport
Landman

MJN:JB
Enclosure

OIL CONSERVATION DIVISION

P.O. Box 2088

Santa Fe, New Mexico 87504-2088

DISTRICT I

P.O. Box 1980, Hobbs, NM 88240

DISTRICT II

P.O. Drawer DD, Artesia, NM 88210

DISTRICT III

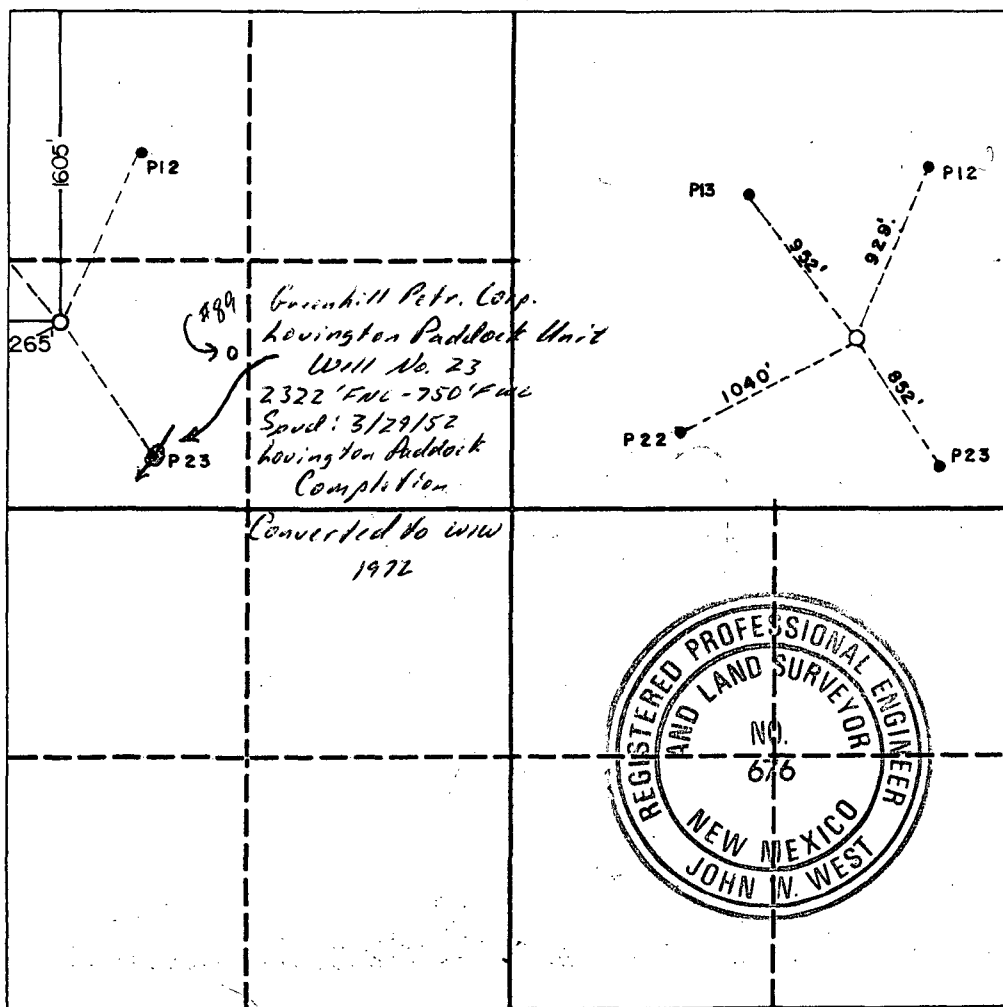
1000 Rio Brazos Rd., Aztec, NM 87410

WELL LOCATION AND ACREAGE DEDICATION PLAT

All Distances must be from the outer boundaries of the section

Operator GREENHILL PETROLEUM CORP.			Lease LOVINGTON PADDOCK UNIT		Well No. 88
Unit Letter E	Section 31	Township 16 SOUTH	Range 37 EAST	County LEA	
Actual Footage Location of Well: 1605 feet from the NORTH line and 265 feet from the West line					
Ground level Elev. 3828.9	Producing Formation Lovington Paddock		Pool Lovington Paddock		Dedicated Acreage: 40 Acres

1. Outline the acreage dedicated to the subject well by colored pencil or hatchure marks on the plat below.
2. If more than one lease is dedicated to the well, outline each and identify the ownership thereof (both as to working interest and royalty).
3. If more than one lease of different ownership is dedicated to the well, have the interest of all owners been consolidated by communitization, unitization, force-pooling, etc.?
☒ Yes ☐ No If answer is "yes" type of consolidation Unitized
If answer is "no" list the owners and tract descriptions which have actually been consolidated. (Use reverse side of this form if necessary.)
No allowable will be assigned to the well until all interests have been consolidated (by communitization, unitization, forced-pooling, or otherwise) or until a non-standard unit, eliminating such interest, has been approved by the Division.



OPERATOR CERTIFICATION

I hereby certify that the information contained herein is true and complete to the best of my knowledge and belief.

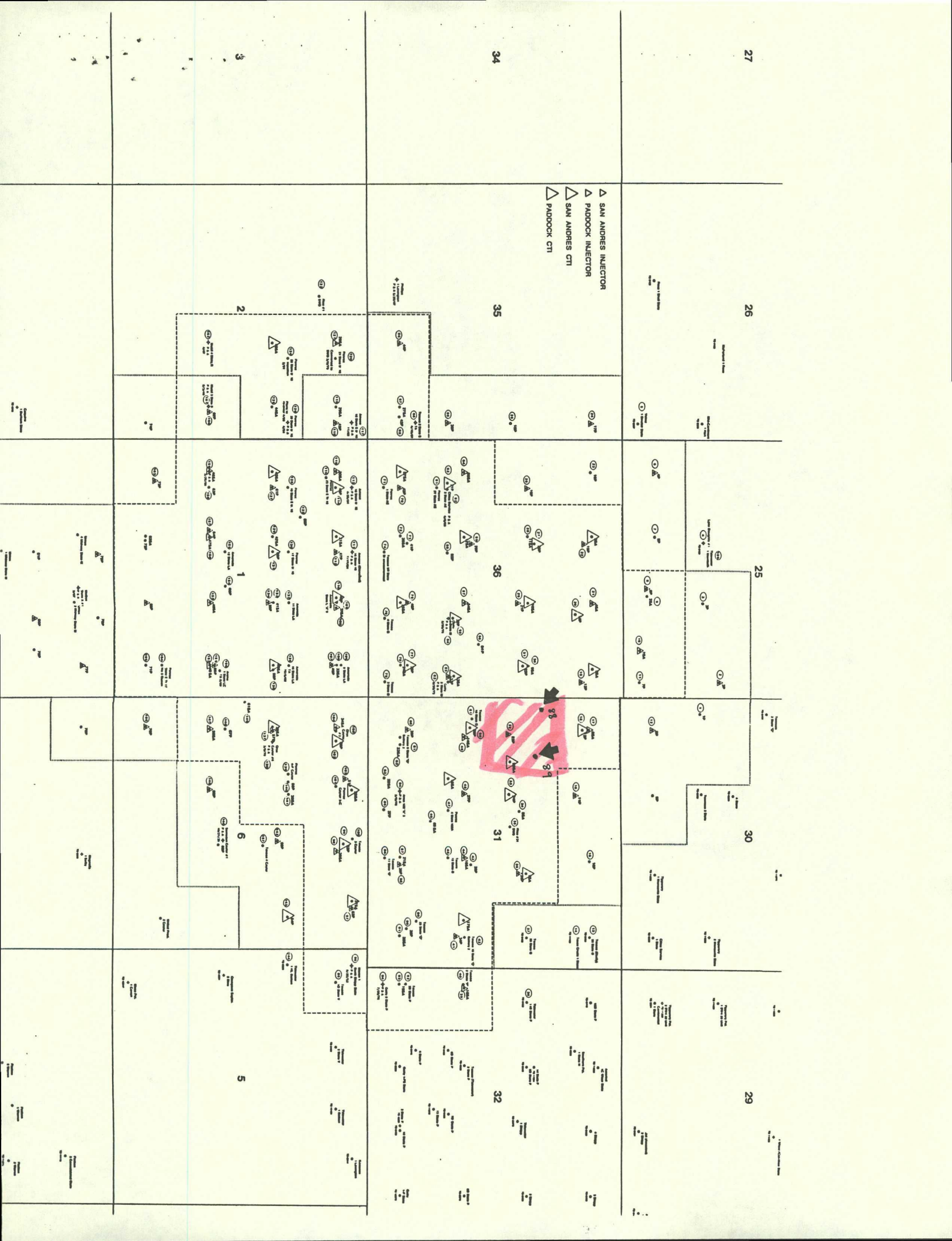
Signature Michael J. Newport
Printed Name Michael J. Newport
Position Landman
Company Greenhill Petroleum
Date 12/17/90

SURVEYOR CERTIFICATION

I hereby certify that the well location shown on this plat was plotted from field notes of actual surveys made by me or under my supervision, and that the same is true and correct to the best of my knowledge and belief.

Date Surveyed October 31, 1990
Signature & Seal of Professional Surveyor

Certificate No. JOHN W. WEST, 676
Ronald J. Eidson
RONALD J. EIDSON, 3239





OIL CONSERVATION DIVISION
RECEIVED
DEC 27 AM 10 59
GARREY CARRUTHERS
GOVERNOR

STATE OF NEW MEXICO
ENERGY AND MINERALS DEPARTMENT
OIL CONSERVATION DIVISION
HOBBS DISTRICT OFFICE

12-20-90

POST OFFICE BOX 1980
HOBBS, NEW MEXICO 88241-1980
(505) 393-6161

OIL CONSERVATION DIVISION
P. O. BOX 2088
SANTA FE, NEW MEXICO 87501

RE: Proposed:

MC _____
DHC _____
NSL X _____
NSP _____
SWD _____
WFX _____
PMX _____

Gentlemen:

I have examined the application for the:

Greenhill Pet. Corp., Lovington Paddock Unit #88-E 31-16-37
Operator Lease & Well No. Unit S-T-R

and my recommendations are as follows:

OK

Yours very truly,

Jerry Sexton
Jerry Sexton
Supervisor, District 1

/ed



GREENHILL PETROLEUM CORPORATION

12777 JONES ROAD, SUITE 375
HOUSTON, TEXAS 77070
TELEPHONE (713) 955-1146
FAX (713) 955-5105

Incorporated in Delaware, U.S.A.

E-31-165-37E

November 6, 1990

Oil Conservation Division
State of New Mexico
Energy, Minerals and Natural Resources Dept.
P.O. Box 2088
Santa Fe, New Mexico 87504-2088

Attn: Mike Stogner

Re: Unorthodox Location and Drilling Permit
Proposed Well No. 89
Lovington Paddock
Lea County, New Mexico

Greenhill Petroleum Corporation respectfully requests the State of New Mexico Oil Conservation Division grant approval of the proposed unorthodox location and the attached permit to drill Well Number 89 in the Lovington Paddock Unit, located in Lea County, New Mexico.

The Lovington Paddock Paddock Unit is presently developed and being waterflooded utilizing a 40-acre well density. It is believed that infill development using a 20-acre well density will improve waterflood sweep efficiency and will increase secondary oil recovery. The proposed location for Well No. 89 is located in the interior of the unit and is not competitive with offset wells outside the unit. Information gathered as a result of drilling this infill well will be utilized in evaluating additional infill development potential in the unit and ultimately may be used to evaluate the feasibility of tertiary recovery.

Greenhill Petroleum Corporation wishes to commence drilling operations on the proposed well as soon as possible and would appreciate a response to this request at your earliest convenience.

Sincerely,

GREENHILL PETROLEUM CORPORATION

Michael J. Newport
Michael J. Newport
Landman

MJN:JB
Enclosure

Submit to Appropriate
District Office
State Lease - 4 copies
Fee Lease - 3 copies

State of New Mexico
Energy, Minerals and Natural Resources Department

Form C-102
Revised 1-1-89

OIL CONSERVATION DIVISION

P.O. Box 2088
Santa Fe, New Mexico 87504-2088

DISTRICT I
P.O. Box 1980, Hobbs, NM 88240

DISTRICT II
P.O. Drawer DD, Artesia, NM 88210

DISTRICT III
1000 Rio Brazos Rd., Aztec, NM 87410

WELL LOCATION AND ACREAGE DEDICATION PLAT

All Distances must be from the outer boundaries of the section

Operator GREENHILL PETROLEUM CORP.			Lease LOVINGTON PADDOCK UNIT		Well No. 89
Unit Letter E	Section 31	Township 16 SOUTH	Range 37 EAST	County LEA	
NMPM					

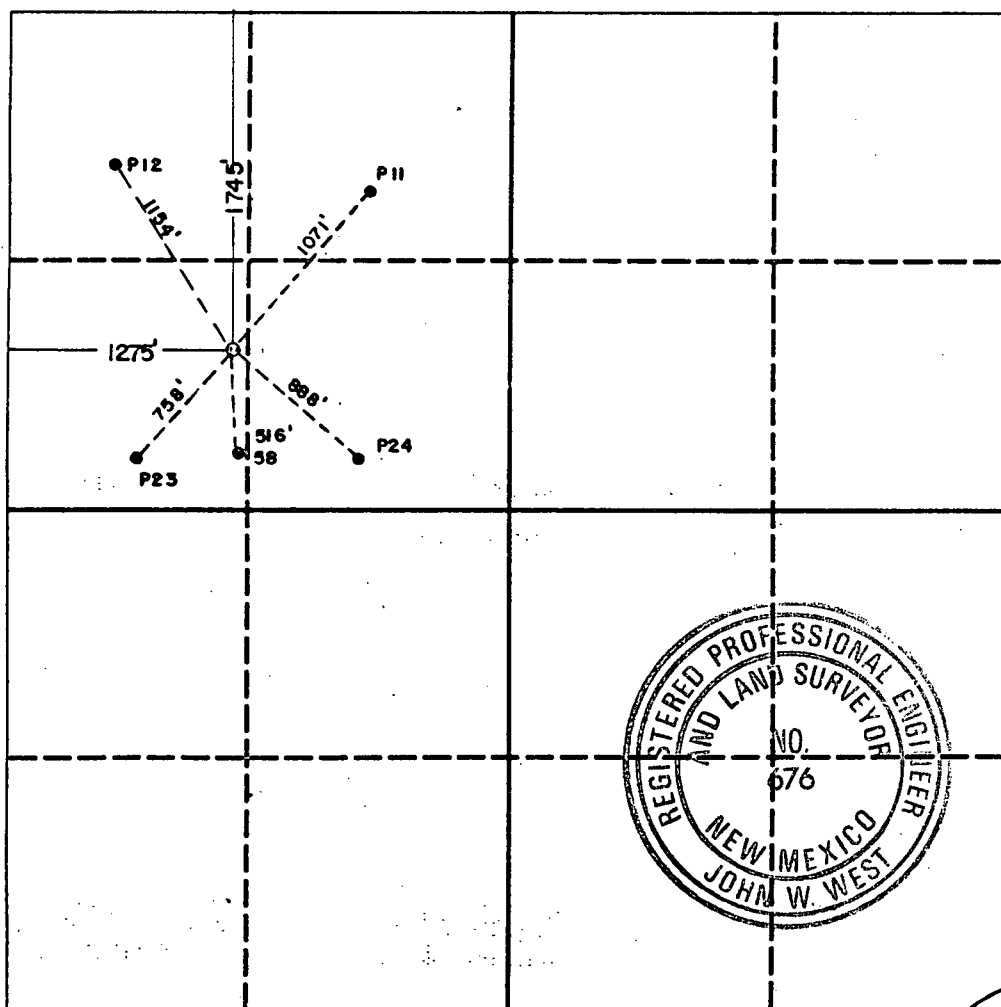
Actual Footage Location of Well:

1275 feet from the WEST line and 1745 feet from the NORTH line			
Ground level Elev. 3828.1	Producing Formation Lovington Paddock	Pool Lovington Paddock	Dedicated Acreage: 40 Acres

1. Outline the acreage dedicated to the subject well by colored pencil or hatchure marks on the plat below.
2. If more than one lease is dedicated to the well, outline each and identify the ownership thereof (both as to working interest and royalty).
3. If more than one lease of different ownership is dedicated to the well, have the interest of all owners been consolidated by communitization, unitization, force-pooling, etc.?
☒ Yes ☐ No If answer is "yes" type of consolidation Unitized

If answer is "no" list the owners and tract descriptions which have actually been consolidated. (Use reverse side of this form if necessary.)

No allowable will be assigned to the well until all interests have been consolidated (by communitization, unitization, forced-pooling, or otherwise) or until a non-standard unit, eliminating such interest, has been approved by the Division.



OPERATOR CERTIFICATION

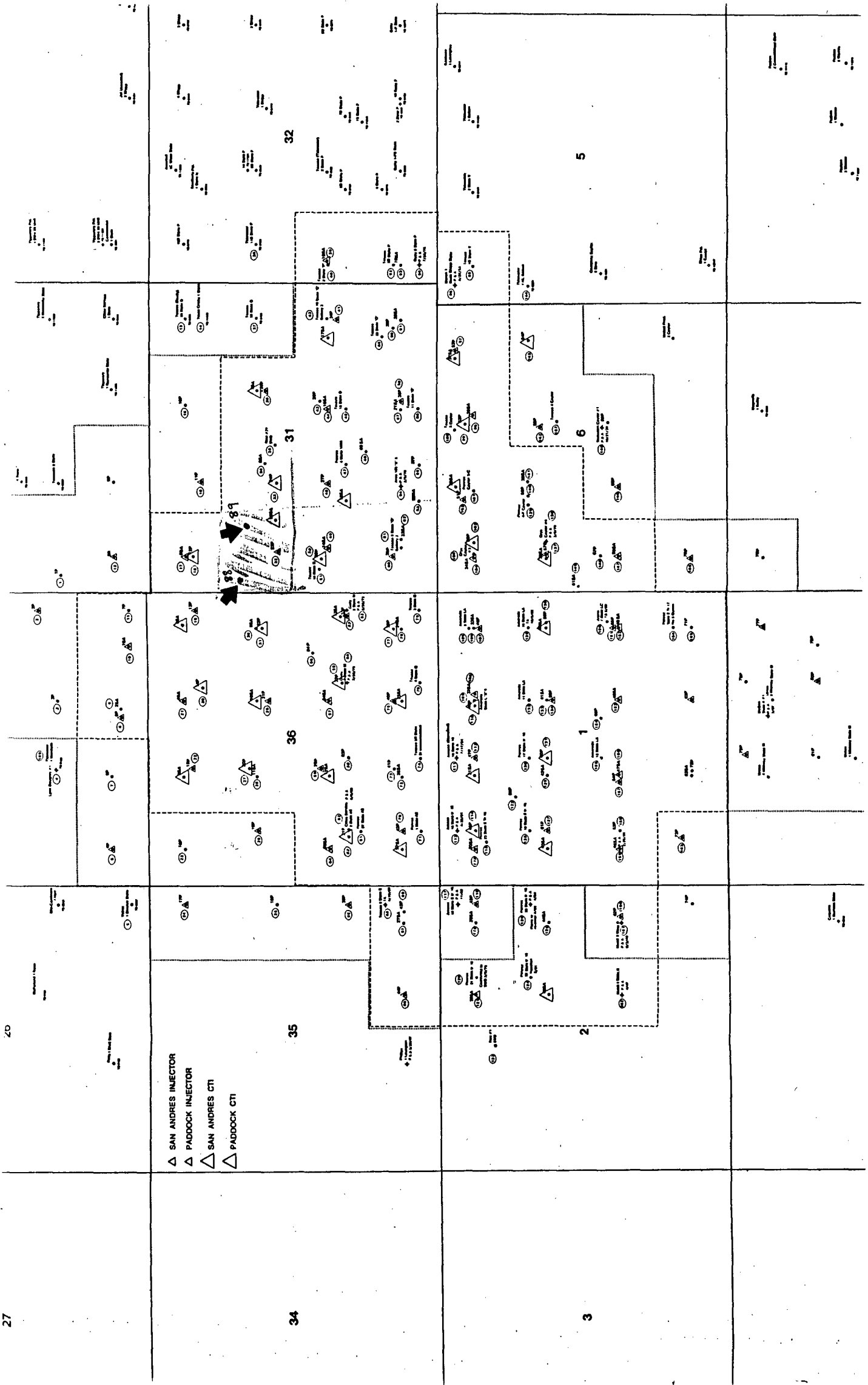
I hereby certify that the information contained herein is true and complete to the best of my knowledge and belief.

Signature <i>Michael J. Newport</i>
Printed Name Michael J. Newport
Position Landman
Company Greenhill Petroleum
Date 12/17/90

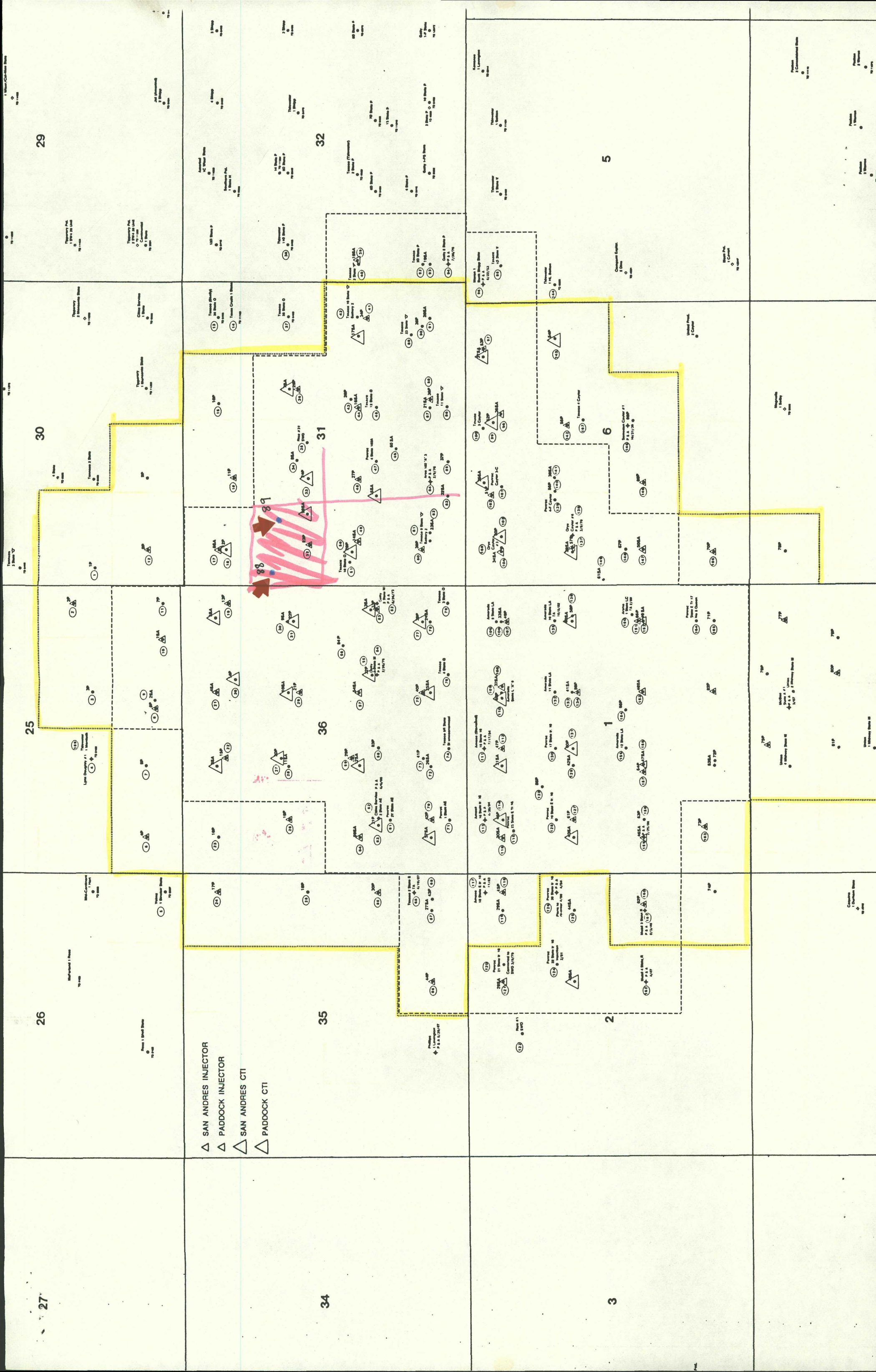
SURVEYOR CERTIFICATION

I hereby certify that the well location shown on this plat was plotted from field notes of actual surveys made by me or under my supervision, and that the same is true and correct to the best of my knowledge and belief.

Date Surveyed 11-1-90
Signature & Seal of Professional Surveyor <i>John W. West</i>
Certificate No. JOHN W. WEST, 676
RONALD J. EIDSON, 3239



△ SAN ANDRES INJECTOR
△ PADDOCK INJECTOR
△ SAN ANDRES CTI
△ PADDOCK CTI





GREENHILL PETROLEUM CORPORATION

OIL CONSERVATION DIVISION
RECEIVED

12777 JONES ROAD, SUITE 375
HOUSTON, TEXAS 77070
TELEPHONE (713) 955-1146
FAX (713) 955-5105

Incorporated in Delaware, U.S.A.

'90 DEC 20 AM 9 17

December 17, 1990

Oil Conservation Division
P.O. Box 2088
Santa Fe, NM 87504-2088

Attn: Mike Stogner

Re: Lovington Paddock
Well No. 88 & 89
Lea County, NM

Enclosed please find the Request for Unorthodox Location covering Well No. 88 and 89. I am also enclosing a plat which shows the location. These two locations are located on a federal tract. I have sent in an Application to drill with the BLM covering these two wells. Please advise if you need additional information.

Sincerely,

Michael J. Newport
Michael J. Newport
Landman

MJN:jb
Enclosure

cc: Hobbs, NM



GARREY CARRUTHERS
GOVERNOR

STATE OF NEW MEXICO
ENERGY AND MINERALS DEPARTMENT
OIL CONSERVATION DIVISION
HOBBS DISTRICT OFFICE

12-20-90

POST OFFICE BOX 1980
HOBBS, NEW MEXICO 88241-1980
(505) 393-6161

OIL CONSERVATION DIVISION
P. O. BOX 2088
SANTA FE, NEW MEXICO 87501

RE: Proposed:

MC _____
DHC _____
NSL X _____
NSP _____
SWD _____
WFX _____
PMX _____

Gentlemen:

I have examined the application for the:

Greenhill Pet. Corp., Lovington Paddock Unit #89-E 31-16-37
Operator Lease & Well No. Unit S-T-R

and my recommendations are as follows:

OK

Yours very truly,

Jerry Sexton
Supervisor, District 1

/ed