

DISTRICT I  
1625 N. FRENCH DR., HOBBS, NM 88240

State of New Mexico  
Energy, Minerals and Natural Resources Department

DISTRICT II  
1301 W. GRAND AVENUE, ARTESIA, NM 88210

DISTRICT III  
1000 Rio Brazos Rd., Aztec, NM 87410

OIL CONSERVATION DIVISION  
1220 SOUTH ST. FRANCIS DR.  
Santa Fe, New Mexico 87505

Form C-102  
Revised October 12, 2005  
Submit to Appropriate District Office  
State Lease - 4 Copies  
Fee Lease - 3 Copies

DISTRICT IV  
1220 S. ST. FRANCIS DR., SANTA FE, NM 87505

WELL LOCATION AND ACREAGE DEDICATION PLAT

☐ AMENDED REPORT

API Number <b>30-005-63986</b>	Pool Code <b>82740</b>	Pool Name <b>Pecos Slope Abo (West)</b>
Property Code <b>23627</b>	Property Name <b>CHAROLETTE "B" FEE</b>	Well Number <b>2</b>
OGRID No. <b>014424</b>	Operator Name <b>MCKAY OIL CORPORATION</b>	Elevation <b>4121'</b>

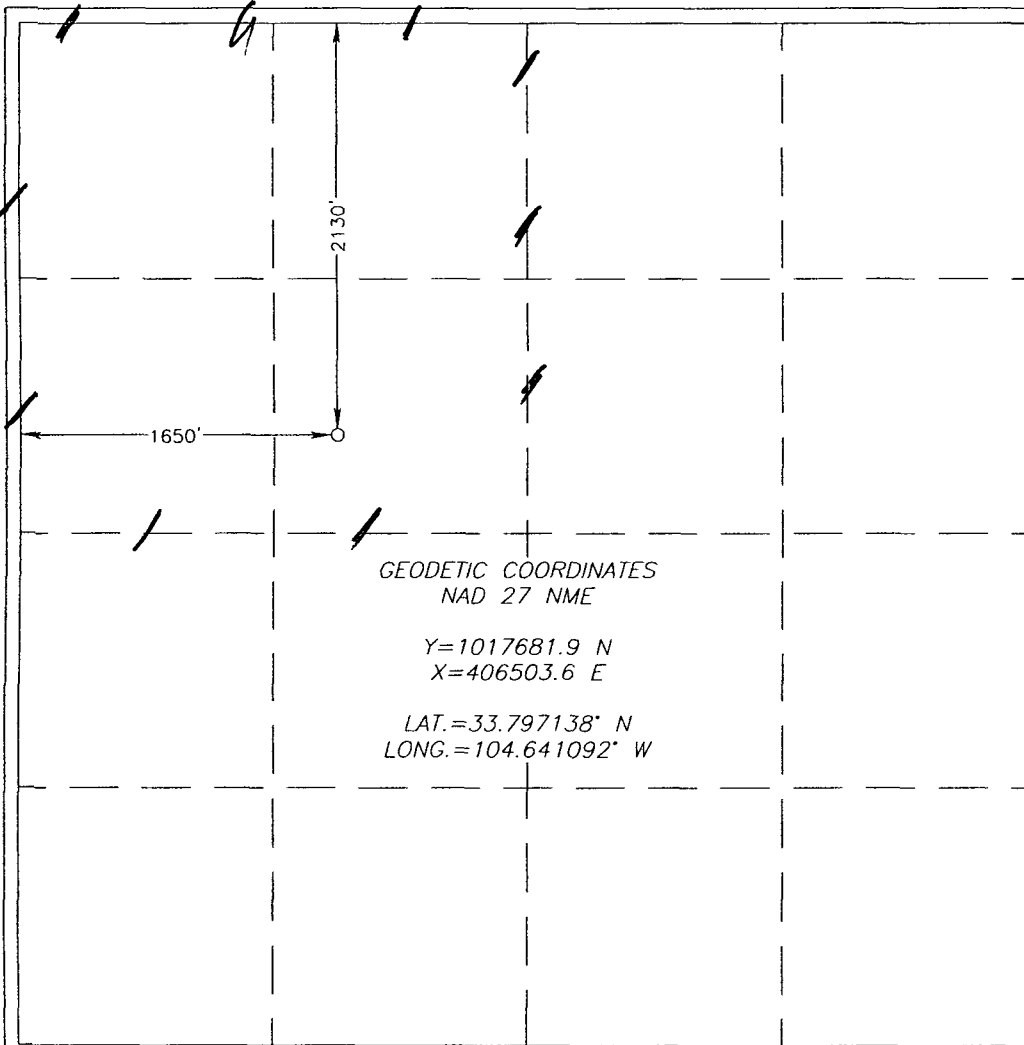
Surface Location

UL or lot No.	Section	Township	Range	Lot Idn	Feet from the	North/South line	Feet from the	East/West line	County
F	17	6-S	23-E		2130	NORTH	1650	WEST	CHAVES

Bottom Hole Location If Different From Surface

UL or lot No.	Section	Township	Range	Lot Idn	Feet from the	North/South line	Feet from the	East/West line	County
Dedicated Acres <b>160.0</b>	Joint or Infill	Consolidation Code	Order No.						

NO ALLOWABLE WILL BE ASSIGNED TO THIS COMPLETION UNTIL ALL INTERESTS HAVE BEEN CONSOLIDATED  
OR A NON-STANDARD UNIT HAS BEEN APPROVED BY THE DIVISION



OPERATOR CERTIFICATION

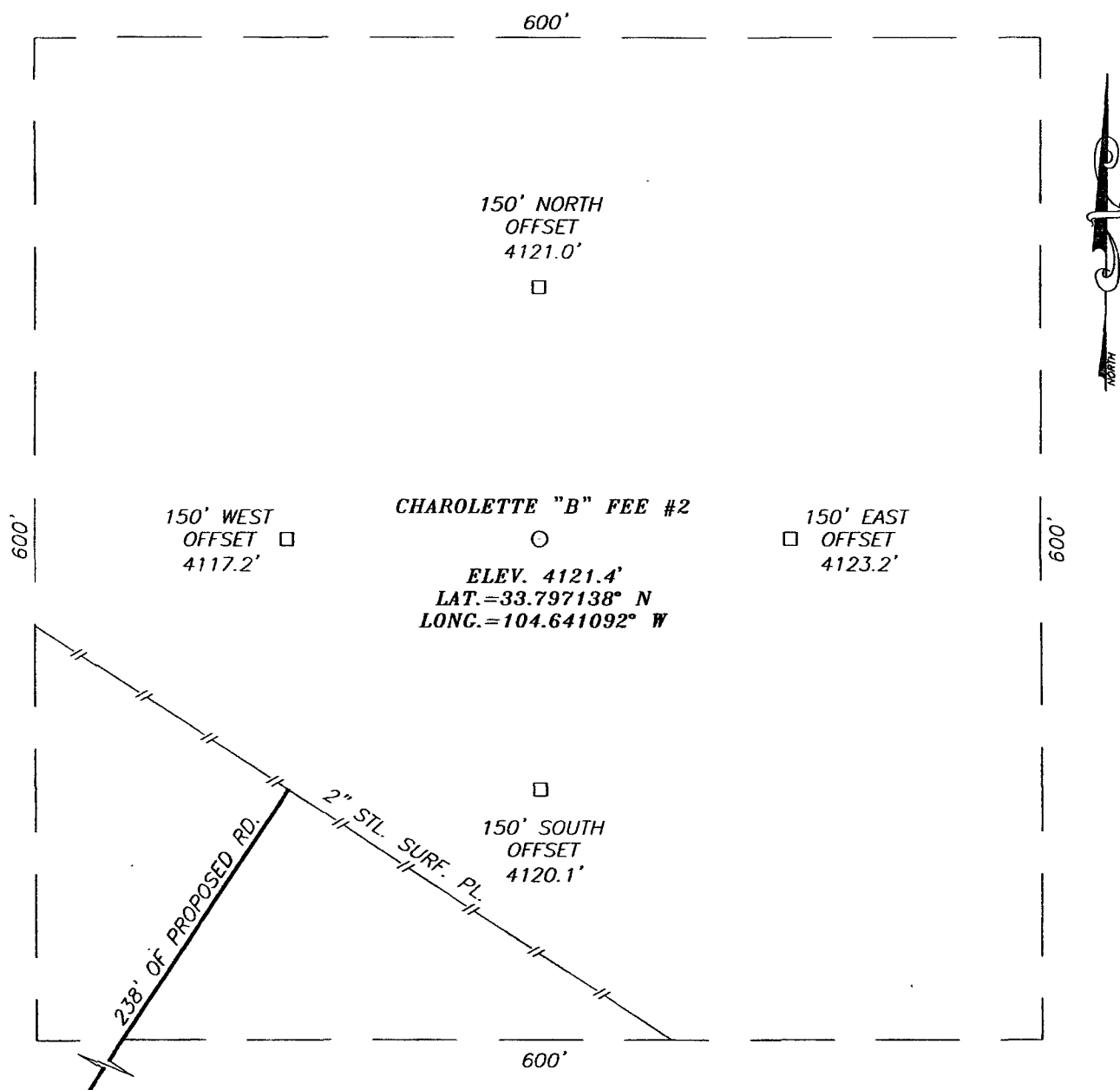
I hereby certify that the information herein is true and complete to the best of my knowledge and belief, and that this organization either owns a working interest or unleased mineral interest in the land including the proposed bottom hole location or has a right to drill this well at this location pursuant to a contract with an owner of such mineral or working interest, or to a voluntary pooling agreement or a compulsory pooling order heretofore entered by the division.

*James L. Schultz* 11-28-07  
Signature Date  
James L. Schultz  
Printed Name

SURVEYOR CERTIFICATION

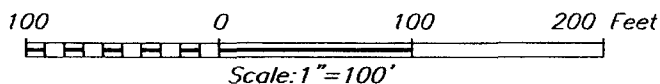
I hereby certify that the well location shown on this plat was plotted from field notes of actual surveys made by me or under my supervision, and that the same is true and correct to the best of my belief.

NOVEMBER 08 2007  
Date Surveyed  
Signature & Seal of Professional Surveyor  
3239  
Certificate No. GARY EIDSON 12641  
RONALD J. EIDSON 3239



## DIRECTIONS TO LOCATION

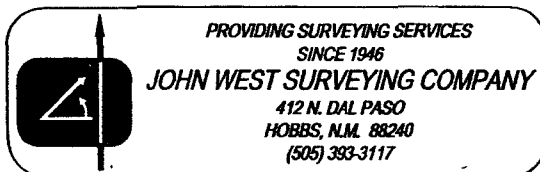
FROM THE INTERSECTION OF U.S. HWY. #285 AND CO. RD. #40 (STAR GRASS), GO WEST ON CO. RD. #40 APPROX. 3.3 MILES. TURN RIGHT AND GO NORTH APPROX. 0.15 MILES. BEND LEFT AND GO NORTHWEST APPROX. 0.14 MILES. TURN RIGHT AND GO NORTH APPROX. 0.2 MILES. THIS LOCATION IS APPROX. 450 FEET NORTHEAST.



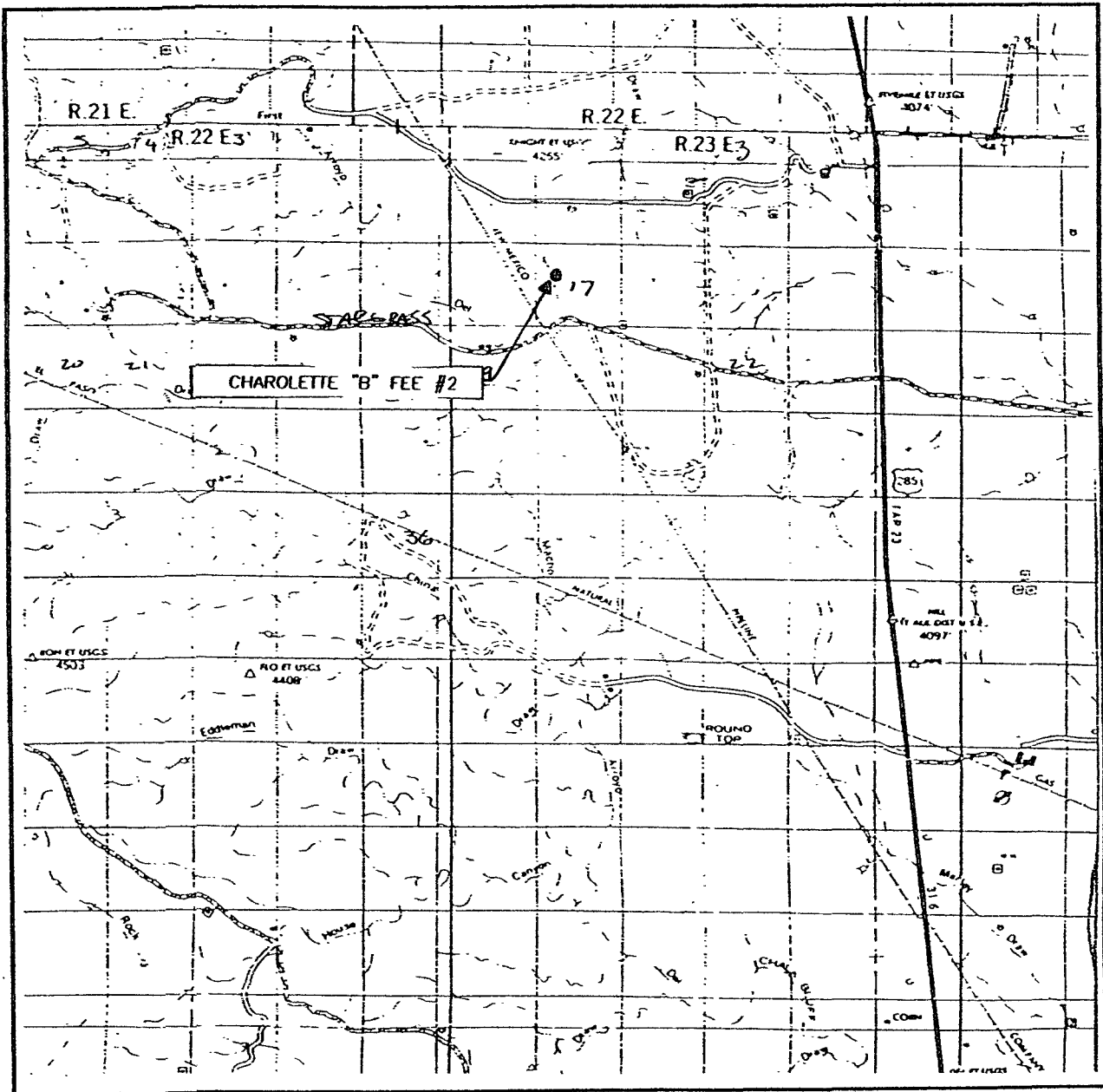
## MCKAY OIL CORPORATION

CHAROLETTE "B" FEE #2 WELL  
LOCATED 2130 FEET FROM THE NORTH LINE  
AND 1650 FEET FROM THE WEST LINE OF SECTION 17,  
TOWNSHIP 6 SOUTH, RANGE 23 EAST, N.M.P.M.,  
CHAVES COUNTY, NEW MEXICO.

Survey Date: 11/08/07	Sheet 1 of 1 Sheets
W.O. Number: 07.11.1581	Dr By: AR
Date: 11/21/07	Rev 1: N/A
Disk:	07111581
	Scale: 1"=100'



# VICINITY MAP



SCALE: 1" = 2 MILES

SEC. 17 TWP. 6-S RGE. 23-E

SURVEY N.M.P.M.

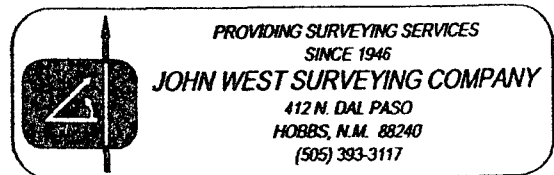
COUNTY CHAVES STATE NEW MEXICO

DESCRIPTION 2130' FNL & 1650' FWL

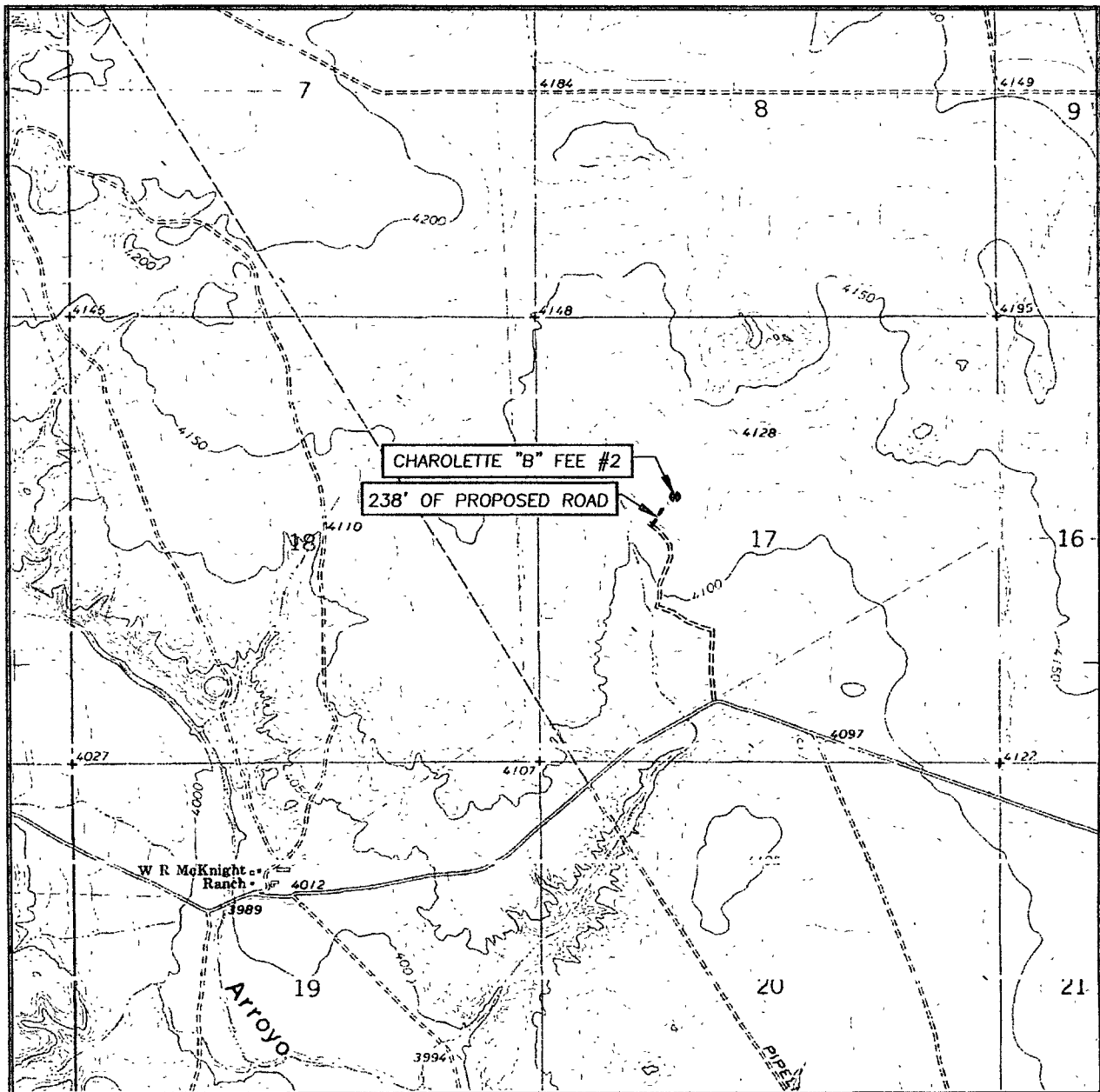
ELEVATION 4121'

OPERATOR MCKAY OIL CORPORATION

LEASE CHAROLETTE "B" FEE



# LOCATION VERIFICATION MAP



SCALE: 1" = 2000'

CONTOUR INTERVAL:  
MESA SW, N.M. - 10'

SEC. 17 TWP. 6-S RGE. 23-E

SURVEY N.M.P.M.

COUNTY CHAVES STATE NEW MEXICO

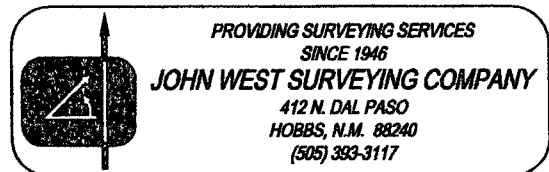
DESCRIPTION 2130' FNL & 1650' FWL

ELEVATION 4121'

OPERATOR MCKAY OIL CORPORATION

LEASE CHARLOTTE "B" FEE

U.S.G.S. TOPOGRAPHIC MAP  
MESA SW, N.M.



**Arrant, Bryan, EMNRD**

**From:** Arrant, Bryan, EMNRD  
**Sent:** Thursday, December 06, 2007 11:04 AM  
**To:** 'jschultz80@hotmail.com'; 'Carol Shanks'  
**Cc:** Brooks, David K., EMNRD; Ezeanyim, Richard, EMNRD  
**Subject:** Charolette B Fee # 2/API # 30-005-63986

Hi Carol,  
We received a request on the above noted well from an agent whom I assume is Jim Schultz for a request to move the surface location for the above noted well.  
Please note that a NSL needs to be approved by Santa Fe for this request.  
I'm sorry, but I cannot approve this application.

Please call if you have any questions and take care,

***Bryan G. Arrant***  
District II Geologist  
New Mexico Oil Conservation Division  
1310 West Grand Ave.  
Artesia, NM 88210  
505-748-1283 Ext. 103

CC: Well file

12/6/2007