

AMERADA HESS CORPORATION

OIL CONSERVATION DIVISION
RECEIVED

'92 APR 28 AM 7 52

P. O. DRAWER "D"
MONUMENT, NEW MEXICO 88265

April 23, 1992

New Mexico Oil Conservation Division
Attn: Mr. Mike Stogner
State Land Office Building
Santa Fe, New Mexico 87504

Dear Mr. Stogner:

AHC, as operator of the NMGSAU, requests spacing exception as required by OCD Rule 104 c.i.a. for unorthodox locations. Amerada Hess is offset operator to all exception locations and all exception locations are inside 40 acre proration units. The NMGSAU project was established by Division Order No. R-9596, dated October 15, 1992, Eunice Monument Grayburg-San Andres Pool, North Monument Grayburg-San Andres Unit Area, Lea County, New Mexico.

UNIT NO.	BLOCK NO.	WELL NO.	FOOTAGE LOCATION	UNIT-SEC-TWP-RG (NMPM)	DEDICATED 40 ACRE TRACT
5		22	2605' FNL-2630' FWL	F-19-19S-37E	SE/4 NW/4
6		18	1310' FNL-2544' FEL	B-20-19S-37E	NW/4 NE/4
9		19	1295' FNL-2560' FWL	C-25-19S-36E	NE/4 NW/4
10		22	2567' FNL-1330' FWL	F-30-19S-37E	SE/4 NW/4
2		25	1330' FSL-1300' FEL	I-18-19S-37E	NE/4 SE/4
* 14		19	80.5 FNL-1505' FWL	C-36-19S-36E	NE/4 NW/4
* 11		18	1260' FNL-1500' FEL	B-29-19S-37E	NW/4 NE/4

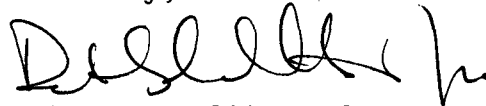
* - Indicates proposed water supply wells which may produce during project development.

All of the above locations were moved to their present locations due to either existing pipelines or roads interfering with the previous location. Attached are individual well survey plats and also a Unit Plat of proposed well locations.

New Mexico Oil Conservation Division
Attn: Mr. Mike Stogner
Page 2

This request supercedes Amerada Hess Corporation's request dated January 8, 1992, to the NMOCD's Mr. David R. Cantanach and the NMOCD's response dated February 14, 1992, from Mr. William J. Lemay to Amerada Hess' J. R. Wilson (Administrative Order NSL-3097).

Sincerely,



Robert L. Williams, Jr.
NMGSAU Unit Superintendent
Amerada Hess Corp.

RLW:tlh

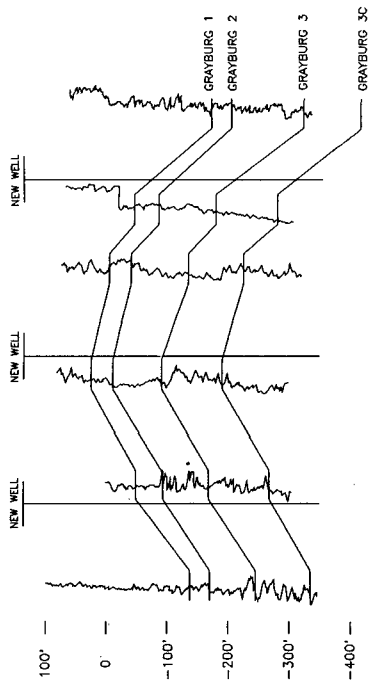
Attachments

xc: Jody Wilson
Jeff Hermann
Ira Johnson
Jim Almrud
Roy Wheeler
File

A'

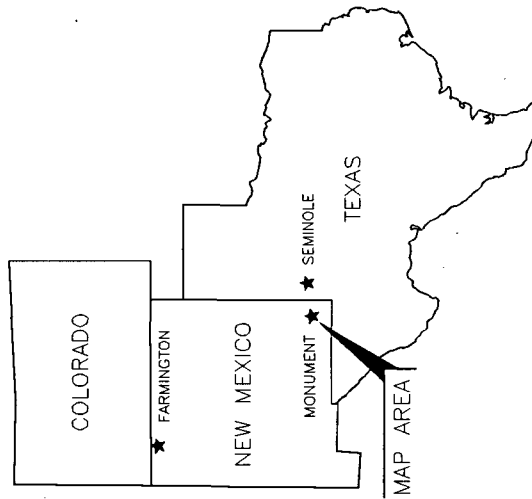
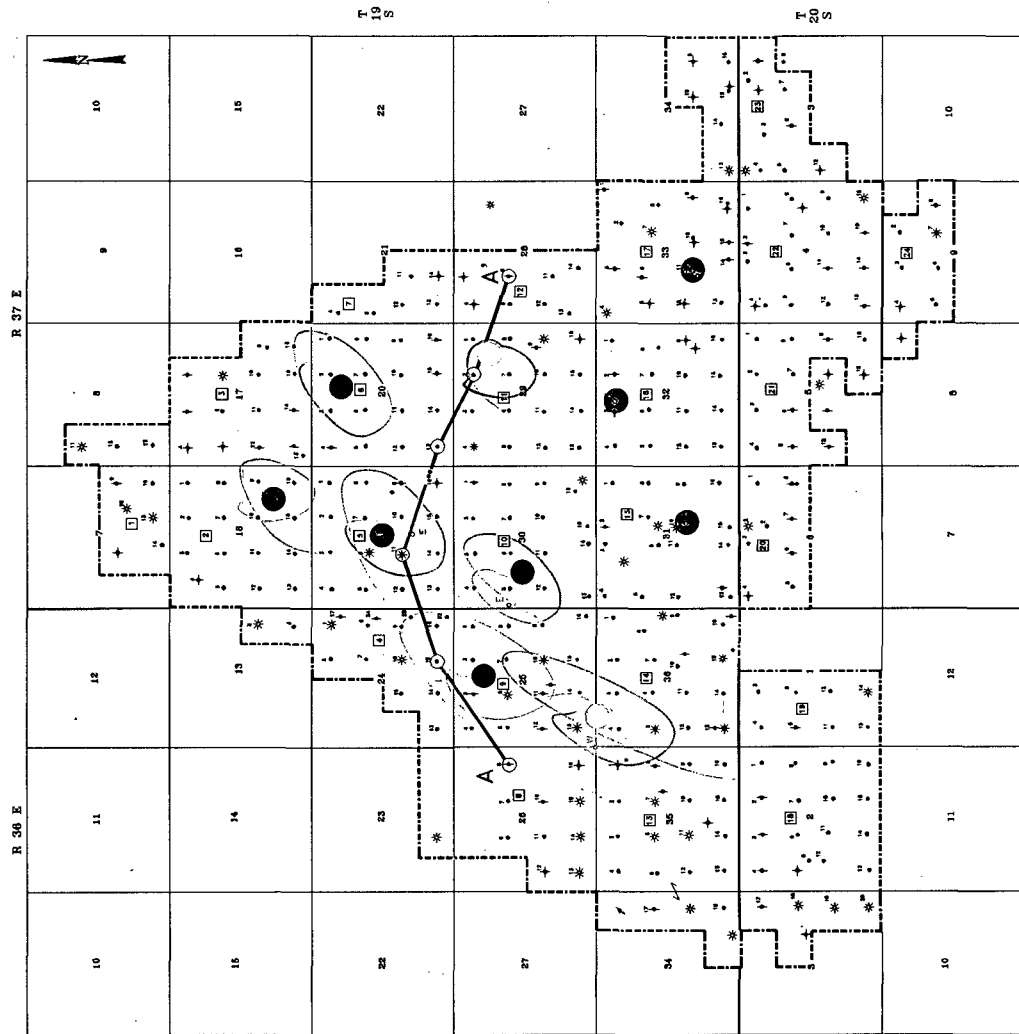
A

B.L.K. 6 WELL #10 B.L.K. 4 WELL #15 B.L.K. 5 WELL #11 B.L.K. 6 WELL #13 B.L.K. 11 WELL #2 B.L.K. 12 WELL #6



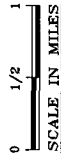
STRATIGRAPHIC CROSS-SECTION A-A'

VERT. SCALE: AS SHOWN
HORIZ. SCALE: SAME AS MAP



LEGEND

- NEW WELL
- OIL WELL
- GAS WELL
- TEMPORARILY ABANDONED
- PLUGGED & ABANDONED
- DUAL PRODUCER
- WATER INJECTION WELL
- BLOCK NUMBER
- LINE OF CROSS SECTION
- UNIT OUTLINE
- RATE ENHANCEMENT WELL
- INFILL WELL
- WATER SUPPLY WELL
- REPLACEMENT WELL



AMERADA HESS CORPORATION	
SOUTHWEST REGION	
NORTH MONUMENT GRAYBURG/ SAN ANDRES UNIT	
1992 DRILLING PROGRAM	
OPERATOR: H. WILLIAMS	DATE: 10-91
DESIGNED BY: J.T. CHANDLER	SCALE: AS SHOWN
FILE NO. MONUMENT	