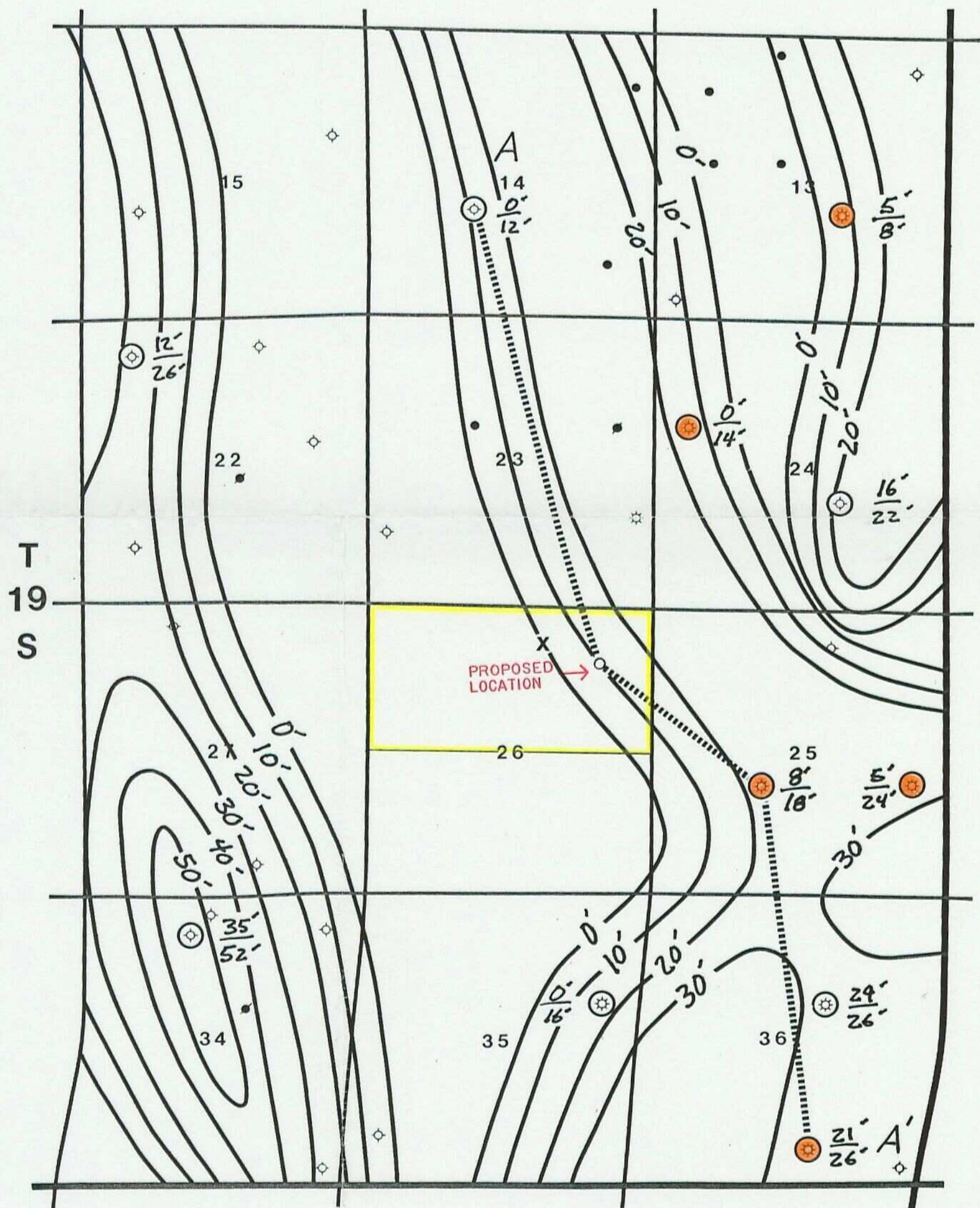
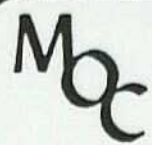


R 2 7 E



- MORROW PENETRATIONS
- ZONE PRODUCER



MEWBOURNE OIL COMPANY
MIDLAND, TEXAS DISTRICT

ANGELL RANCH PROSPECT
EDDY COUNTY, NEW MEXICO

LOWER MORROW ORANGE ZONE
GROSS SAND ISOPACH

NET Ø' ≥ 7%
GROSS SD

C.I. = 10'

EXHIBIT
B-2

MAY 1992

SCALE 1"=2000'

DEXTER HARMON