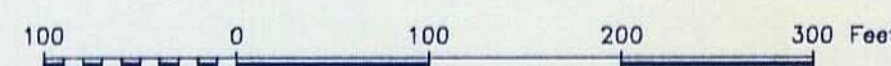


TOPOGRAPHIC DETAIL NE/4-NE/4 SECTION 25

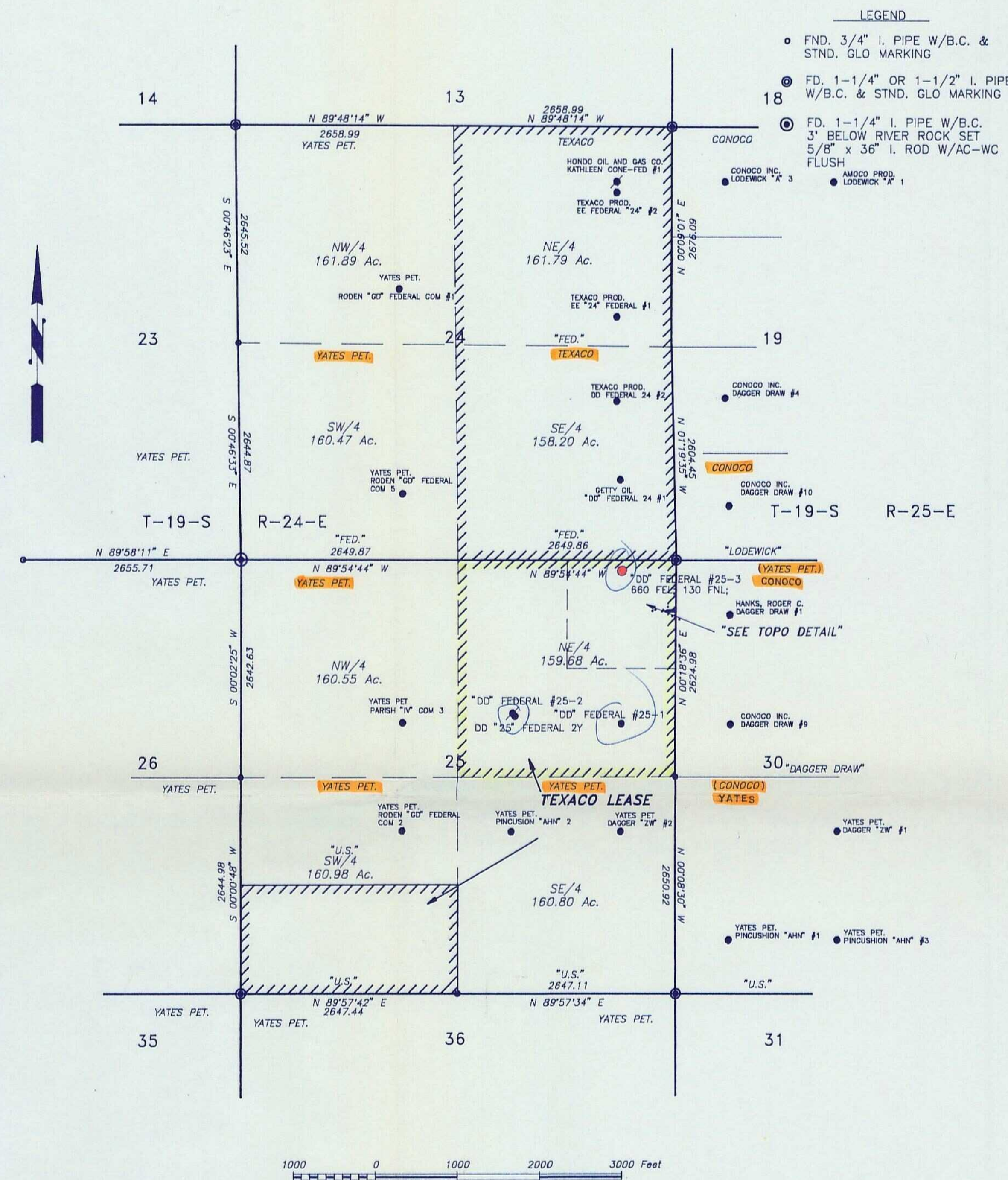


STATE PLANE COORDINATE NOTE

BEARINGS, DISTANCES, AND COORDINATES ARE RELATIVE TO THE NEW MEXICO STATE PLANE COORDINATE SYSTEM, EAST ZONE, 1927 NORTH AMERICAN DATUM. THE SURVEY HAS AN AVERAGE ELEVATION FACTOR OF 0.9998278 BASED ON THE ELEVATION OF 3600 FEET, AN AVERAGE SCALE FACTOR OF 0.9997418, FOR A COMBINED GRID FACTOR OF 0.9997418. THE COORDINATE VALUES FOR THIS PROJECT ARE BASED ON THE FOLLOWING UNITED STATES GEODETIC SURVEY MONUMENT AS ESTABLISHED, "MILL -1943" WITH A THETA ANGLE OF -00°06'10".

24 19  
25 30

OVERHEAD ELECTRIC BY OTHERS



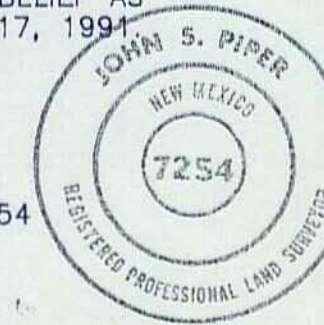
OPERATOR CERTIFICATION

I HEREBY CERTIFY THAT THE INFORMATION CONTAINED HEREIN IS TRUE AND COMPLETE TO THE BEST OF MY KNOWLEDGE AND BELIEF. DATE November 11, 1991.

*Royce D. Mariott*  
ROYCE D. MARIOTT  
DIVISION SURVEYOR  
TEXACO EXPLORATION & PRODUCTION INC.

PREPARED BY  
PIPER SURVEYING COMPANY  
P.O. BOX 60432  
MIDLAND, TEXAS 79711  
(915) 561-9025

I, JOHN S. PIPER, PROFESSIONAL LAND SURVEYOR, DO HEREBY CERTIFY THAT THIS PLAT IS TRUE AND CORRECT TO THE BEST OF MY KNOWLEDGE AND BELIEF AS SURVEYED ON THE GROUND, OCTOBER 17, 1991.  
*John S. Piper*  
JOHN S. PIPER  
PROFESSIONAL LAND SURVEYOR NO. 7254  
MIDLAND, TEXAS  
DATE: NOVEMBER 5, 1991  
REVISED: NOVEMBER 11, 1991



PREPARED FOR  
TEXACO EXPLORATION & PRODUCTION INC.  
"DD" FEDERAL 25 #3  
NE/4 SECTION 25, T-19-S, R-24-E, N.M.P.M.  
EDDY COUNTY, NEW MEXICO

REVISED 11/4/91, 11/11/91

DATE: OCTOBER 7, 1991