

DATE IN 1/8/08	SUSPENSE	ENGINEER Brooks	LOGGED IN 1/9/08	TYPE SD	APP NO. PKUR08000955500
-------------------	----------	--------------------	---------------------	------------	----------------------------

ABOVE THIS LINE FOR DIVISION USE ONLY

NEW MEXICO OIL CONSERVATION DIVISION
- Engineering Bureau -
1220 South St. Francis Drive, Santa Fe, NM 87505



EOG
Salmon A32 St# 2H
200803

ADMINISTRATIVE APPLICATION CHECKLIST

THIS CHECKLIST IS MANDATORY FOR ALL ADMINISTRATIVE APPLICATIONS FOR EXCEPTIONS TO DIVISION RULES AND REGULATIONS WHICH REQUIRE PROCESSING AT THE DIVISION LEVEL IN SANTA FE

Application Acronyms:

[NSL-Non-Standard Location] [NSP-Non-Standard Proration Unit] [SD-Simultaneous Dedication]
[DHC-Downhole Commingling] [CTB-Lease Commingling] [PLC-Pool/Lease Commingling]
[PC-Pool Commingling] [OLS - Off-Lease Storage] [OLM-Off-Lease Measurement]
[WFX-Waterflood Expansion] [PMX-Pressure Maintenance Expansion]
[SWD-Salt Water Disposal] [IPI-Injection Pressure Increase]
[EOR-Qualified Enhanced Oil Recovery Certification] [PPR-Positive Production Response]

[1] TYPE OF APPLICATION - Check Those Which Apply for [A]

[A] Location - Spacing Unit - Simultaneous Dedication
☐ NSL ☐ NSP ☒ SD

Check One Only for [B] or [C]

[B] Commingling - Storage - Measurement
☐ DHC ☐ CTB ☐ PLC ☐ PC ☐ OLS ☐ OLM

[C] Injection - Disposal - Pressure Increase - Enhanced Oil Recovery
☐ WFX ☐ PMX ☐ SWD ☐ IPI ☐ EOR ☐ PPR

[D] Other: Specify _____

[2] NOTIFICATION REQUIRED TO: - Check Those Which Apply, or Does Not Apply

[A] ☐ Working, Royalty or Overriding Royalty Interest Owners

[B] ☒ Offset Operators, Leaseholders or Surface Owner

[C] ☐ Application is One Which Requires Published Legal Notice

[D] ☐ Notification and/or Concurrent Approval by BLM or SLO
U.S. Bureau of Land Management - Commissioner of Public Lands, State Land Office

[E] ☐ For all of the above, Proof of Notification or Publication is Attached, and/or,

[F] ☐ Waivers are Attached

[3] SUBMIT ACCURATE AND COMPLETE INFORMATION REQUIRED TO PROCESS THE TYPE OF APPLICATION INDICATED ABOVE.

[4] **CERTIFICATION:** I hereby certify that the information submitted with this application for administrative approval is **accurate** and **complete** to the best of my knowledge. I also understand that **no action** will be taken on this application until the required information and notifications are submitted to the Division.

Note: Statement must be completed by an individual with managerial and/or supervisory capacity.

Ocean Munds-Dry	Ocean Munds-Dry	attorney	1-8-08
Print or Type Name	Signature	Title	Date
		omundsdry@hollandhart.com	
		e-mail Address	

2008 JUN 8 PM 2 54
RECEIVED



January 8, 2008

HAND-DELIVERED

Mark E. Fesmire, P. E.
Director
Oil Conservation Division
New Mexico Department of Energy,
Minerals and Natural Resources
1220 South Saint Francis Drive
Santa Fe, New Mexico 87505

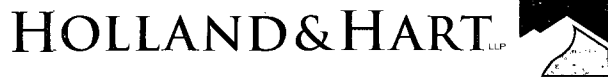
Re: Application of EOG Resources, Inc. for Administrative Approval of the Simultaneous Dedication of the N/2 of Section 32, Township 18 South, Range 23 East, N.M.P.M., Eddy County, New Mexico to its proposed Salmon A 32 State Well No. 2H and the existing Salmon A 32 State Well No. 1H.

Dear Mr. Fesmire:

EOG Resources, Inc. is the operator of a standard 320-acre spacing unit in the Four Mile Draw Wolfcamp Gas Pool (**Pool Code 97415**) comprised of the N/2 of Section 32, Township 18 South, Range 23 East, N.M.P.M., Eddy County, New Mexico. This spacing unit is dedicated to EOG's Salmon A 32 State Well No. 1H which has been horizontally drilled and produces from the Wolfcamp formation.

EOG seeks administrative approval of the simultaneous dedication of this standard 320-acre gas spacing unit to the following two horizontal gas wells:

- A. the existing **SALMON A 32 STATE COM Well No. 1H (API No. 30-015-35910)** horizontally drilled from a surface location 760 feet from the North line and 660 feet from the West line to a proposed end point or bottomhole location 760 feet from the North line and 660 feet from the East line of said Section 32; and
- B. the proposed **SALMON A 32 STATE COM Well No. 2H (API No. 30-015 -35911)** to be horizontally drilled from a surface location 1880 feet from the North line and 660 feet from the West line to a proposed end point or bottomhole location 1880 feet from the North line and 660 feet from the East line of said Section 32.



Both the penetration point and the bottomhole location for the Salmon A 32 State Well No. 1H are at a standard location in the Wolfcamp formation pursuant to Division Rules 104.C (2) (a) and 111.A (7). EOG now intends to horizontally drill and complete its proposed Salmon A 32 State Well No. 2H to be drilled to the targeted subsurface end-point or bottomhole location 1880 feet from the North line and 660 feet from the East line (Unit H) of Section 32. EOG proposes to drill this well in compliance with the setback requirements of Division Rules 104.C(2)(b) and 111.A(7) for deep gas wells in southeast New Mexico.

Attached hereto as **Exhibit A** is a copy of Division Form C-102 for this well that shows the proposed surface and bottomhole location of the well.

Exhibit B is a map of offset operators around the spacing unit in Section 32. **Exhibit C** is a list of affected parties as defined by Division Rules. As required by Rule 1210, a copy of this application (with attachments) has been sent to those affected parties in accordance with Rule 1207(A)(5) and they have been advised that if they have an objection to this application it must be filed in writing with the Division's Santa Fe office within twenty days from the date this notice was sent.

The simultaneous dedication of the N/2 of said Section 32 to the Salmon A 32 Well Nos. 1H and 2H will afford EOG the opportunity to efficiently produce the Wolfcamp formation under this spacing unit. EOG's proposed simultaneous dedication of these wells does not exceed the number of wells allowed by Division Rule for this spacing unit.

Your attention to this application is appreciated.

Sincerely,

A handwritten signature in black ink that reads "Ocean Munds-Dry". The signature is written in a cursive, flowing style.

Ocean Munds-Dry
Attorney for EOG Resources, Inc.

Enclosures
cc: Donny Glanton

District I
1625 N. French Dr., Hobbs, NM 88240
District II
1301 W. Grand Avenue, Artesia, NM 88210
District III
1000 Rio Brazos Rd., Aztec, NM 87410
District IV
1220 S. St. Francis Dr., Santa Fe, NM 87505

State of New Mexico
Energy, Minerals & Natural Resources Department
OIL CONSERVATION DIVISION
1220 South St. Francis Dr.
Santa Fe, NM 87505

Form C-102
Revised October 12, 2005
Submit to Appropriate District Office
State Lease- 4 Copies
Fee Lease- 3 Copies

☐ AMENDED REPORT

WELL LOCATION AND ACREAGE DEDICATION PLAT

API Number 30-015-35911	Pool Code 97415	Pool Name Four Mile Draw ; Wolfcamp (G)
Property Code 36821	Property Name SALMON "A" 32 STATE COM	Well Number 2H
OGRIID No. 7377	Operator Name EOG RESOURCES, INC.	Elevation 4031'

Surface Location

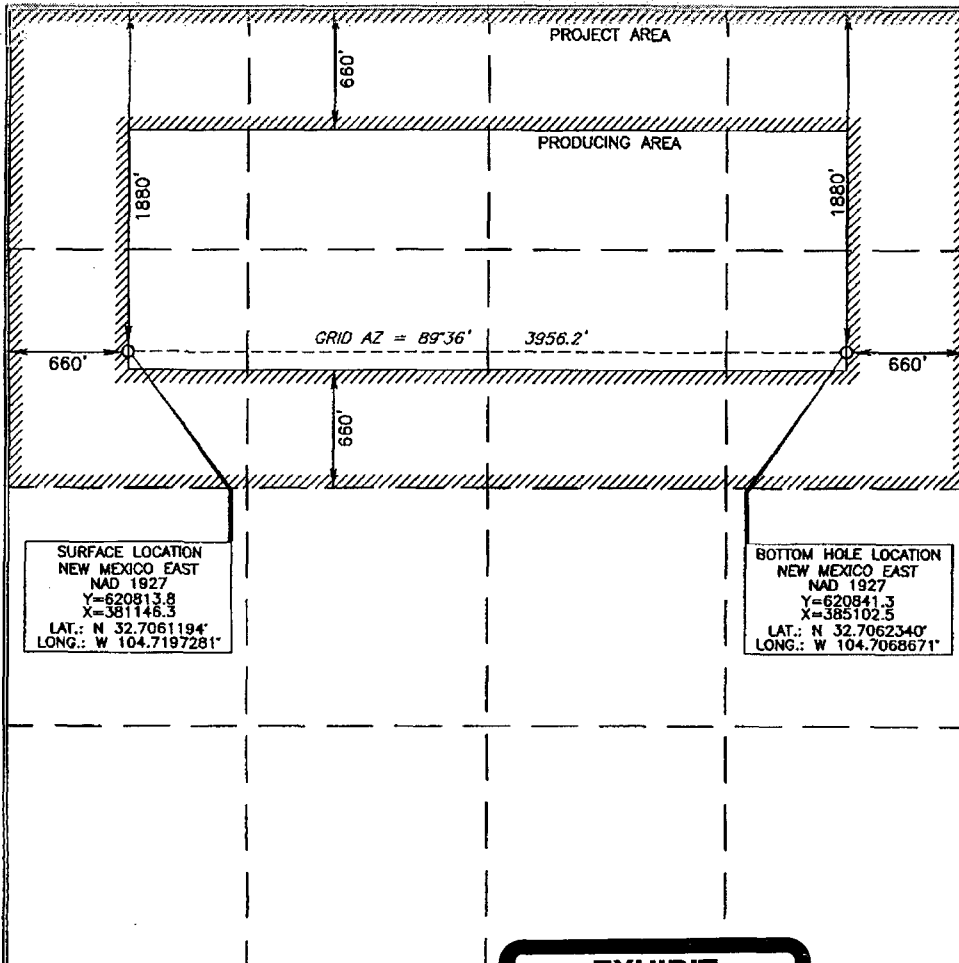
UL or lot no.	Section	Township	Range	Lot Idn	Feet from the	North/South line	Feet from the	East/West line	County
E	32	18 SOUTH	23 EAST, N.M.P.M.		1880	NORTH	660	WEST	EDDY

Bottom Hole Location If Different From Surface

UL or lot no.	Section	Township	Range	Lot Idn	Feet from the	North/South line	Feet from the	East/West line	County
H	32	18 SOUTH	23 EAST, N.M.P.M.		1880	NORTH	660	EAST	EDDY

Dedicated Acres 3.20	Joint or Infill	Consolidation Code	Order No.
--------------------------------	-----------------	--------------------	-----------

No allowable will be assigned to this completion until all interests have been consolidated or a non-standard unit has been approved by the division.



OPERATOR CERTIFICATION

I hereby certify that the information contained herein is true and complete to the best of my knowledge and belief, and that this organization either owns a working interest or unleased mineral interest in the land including the proposed bottom hole location or has a right to drill this well at this location pursuant to a contract with an owner of such a mineral or working interest, or to a voluntary pooling agreement or a compulsory pooling order heretofore entered by the division.

Don D. Mch 1/2/08
Signature Date

Don D. Mch
Printed Name

SURVEYOR CERTIFICATION

I hereby certify that the well location shown on this plat was plotted from field notes of actual surveys made by me or under my supervision and that the same is true and correct to the best of my belief.

15079
OCTOBER 17, 2007
Date of Survey

Signature and Seal of Professional Surveyor

Tony J. Carl 10-19-2007
Certificate Number 15079

WOF 071017WL-b (KA)

EXHIBIT

A

District I
1625 N. French Dr., Hobbs, NM 88240
District II
1301 W. Grand Avenue, Artesia, NM 88210
District III
1000 Rio Brazos Rd., Aztec, NM 87410
District IV
1220 S. St. Francis Dr., Santa Fe, NM 87505

State of New Mexico
Energy, Minerals & Natural Resources Department
OIL CONSERVATION DIVISION
1220 South St. Francis Dr.
Santa Fe, NM 87505

Form C-102
Revised October 12, 2005
Submit to Appropriate District Office
State Lease- 4 Copies
Fee Lease- 3 Copies

☐ AMENDED REPORT

WELL LOCATION AND ACREAGE DEDICATION PLAT

API Number 30-015-35910	Pool Code 97415	Pool Name Four Mile Draw Wolfcamp (G)
Property Code 36821	Property Name SALMON "A" 32 STATE COM	Well Number 1H
UGRID No. 7377	Operator Name EOG RESOURCES, INC.	Elevation 4040'

Surface Location

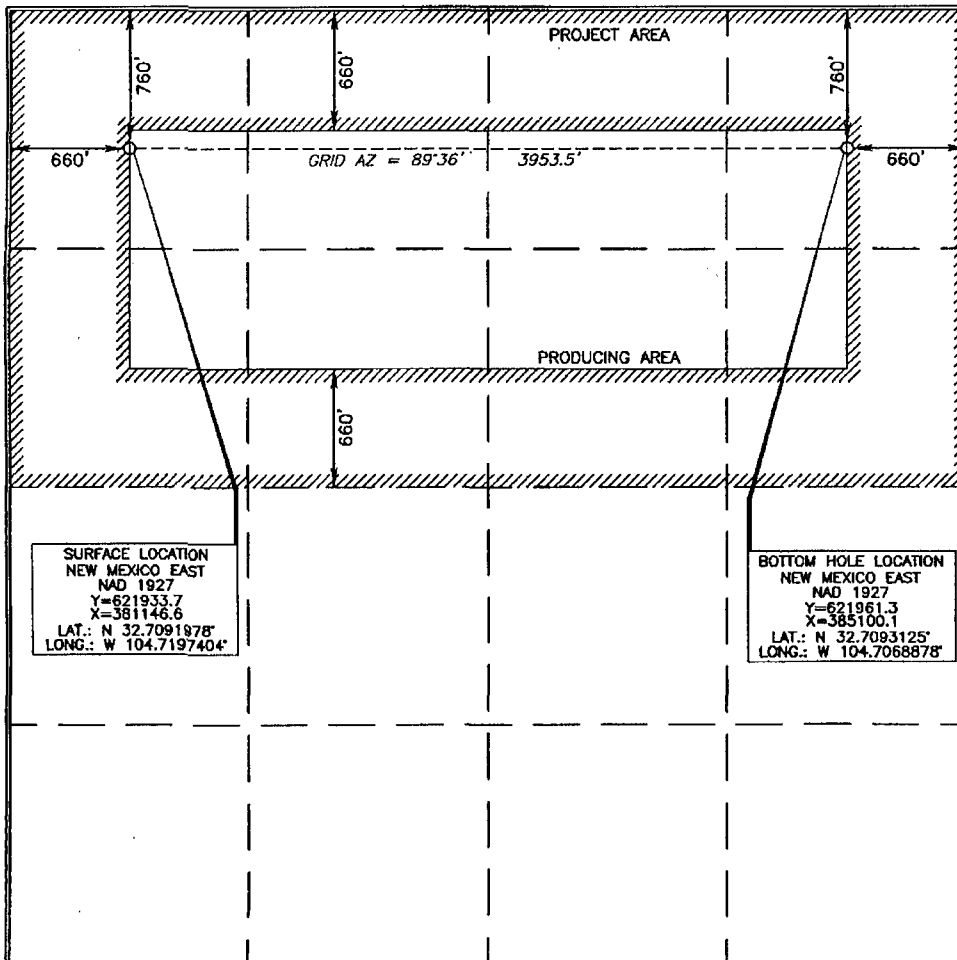
UL or lot no.	Section	Township	Range	Lot Idn	Feet from the	North/South line	Feet from the	East/West line	County
D	32	18 SOUTH	23 EAST, N.M.P.M.		760	NORTH	660	WEST	EDDY

Bottom Hole Location If Different From Surface

UL or lot no.	Section	Township	Range	Lot Idn	Feet from the	North/South line	Feet from the	East/West line	County
A	32	18 SOUTH	23 EAST, N.M.P.M.		760	NORTH	660	EAST	EDDY

Dedicated Acres 320	Joint or Infill	Consolidation Code	Order No.
-------------------------------	-----------------	--------------------	-----------

No allowable will be assigned to this completion until all interests have been consolidated or a non-standard unit has been approved by the division.



OPERATOR CERTIFICATION

I hereby certify that the information contained herein is true and complete to the best of my knowledge and belief, and that this organization either owns a working interest or unleased mineral interest in the land including the proposed bottom hole location or has a right to drill this well at this location pursuant to a contract with an owner of such a mineral or working interest, or to a voluntary pooling agreement or a compulsory pooling order heretofore entered by the division.

Donny G. Glanton 1/2/08
Signature Date

Donny G. Glanton
Printed Name

SURVEYOR CERTIFICATION

I hereby certify that the well location shown on the plat was plotted from field notes or actual surveys made by me or under my supervision, and that the same are true and correct to the best of my belief.

15079
OCTOBER 17, 2007
Date of Survey

15079
Signature and Seal of Professional Surveyor

10-25-2007
Certificate Number 15079

WO# 071017WL-a (KA)

OFFSETS IN SECTION 32

(30)	LCX	(29)		(28) MACK
	D	C	B	A
	Salmon A 32			
MACK	E	F	G	H
(31)	L	K	J	I
	EOG			
	M	N	O	P

Exhibit C

**Application of EOG Resources, Inc.
Simultaneous Dedication of
N/2 of Section 32, Township 18 South, Range 23 East, NMPM
Eddy County, New Mexico**

LCX Energy, LLC
101 N. Marenfeld Suite 200
Midland, Texas 79701

Mack Energy Corporation
Post Office Box 960
Artesia, New Mexico 88211-0960