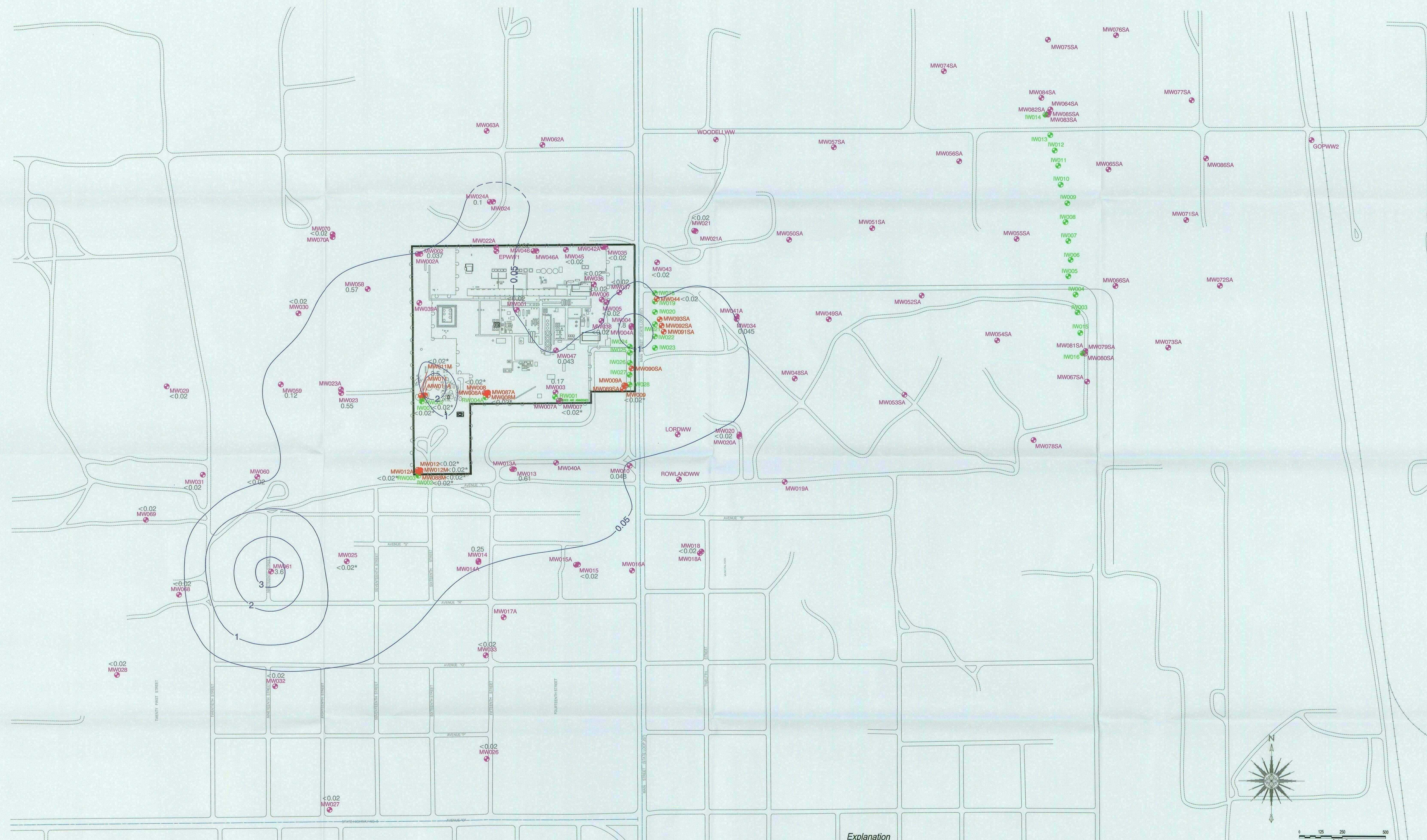


GW - 004

# 2006 MONITORING REPORTS



03/12/2007



**Explanation**  
Monitoring Well Location  
Hexavalent Chromium Concentration (mg/L)  
\* Value not used to generate contours  
Recovery Well Location  
Injection Well Location  
Water Supply Well Location  
Hexavalent Chromium Isoconcentration Contour  
Inferred Isoconcentration Contour

Note: It is believed previous molasses injection resulted in laboratory interferences and elevated detection limits in affected wells.

No warranty is made by SECOR International, Inc. as to the accuracy, reliability, or completeness of these data. Original data were completed from various sources. This information may not meet National Map Accuracy Standards. This product was developed electronically, and may be updated without notification. Any reproduction may result in a loss of scale and/or information.

 2321 Club Meridian Drive, Suite E Okemos, Michigan 48864 PHONE: (517) 349-9499 FAX: (517) 349-6863	FOR:  EUNICE NORTH GAS PLANT EUNICE, NEW MEXICO	HEXAVALENT CHROMIUM ISOCONCENTRATION MAP - SHALLOW WELLS (JUNE/JULY 2006)	FIGURE:  13
	JOB NUMBER: 89GH49410.07 DRAWN BY: RDT CHECKED BY: APPROVED BY: DATE: 10/13/2006		