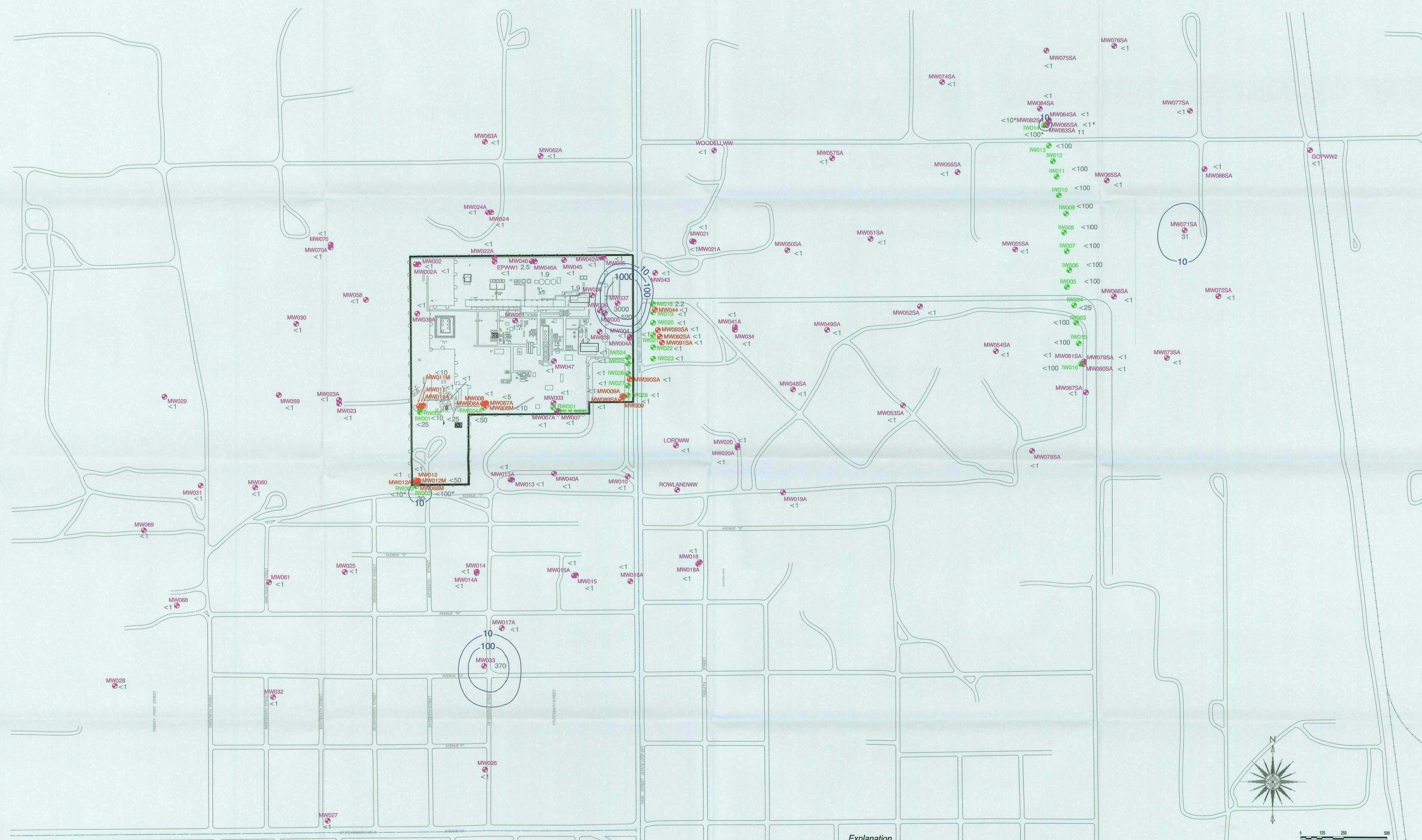


GW - 004

2006 MONITORING REPORTS

03/12/2007



- Explanation**
- MW046 Monitoring Well Location
 - <1* Benzene Concentration (ug/L)
 - * Value not used to generate contours
 - RW002 Recovery Well Location
 - IW006 Injection Well Location
 - ROWLANDWW Water Supply Well Location
 - 100 Benzene Isoconcentration Contour
 - Inferred Isoconcentration Contour

Note: It is believed previous molasses injection resulted in laboratory interferences and elevated detection limits in affected wells.

No warranty is made by SECOR International, Inc. as to the accuracy, reliability, or completeness of these data. Original data were compiled from various sources. This information may not meet National Map Accuracy Standards. This product was developed electronically and may be updated without notification. Any reproduction may result in a loss of scale and/or information.

| | | | | | |
|--|--|------------------|---|--------------|-------------------|
| 2321 Club Meridian Drive, Suite E Cherries, Michigan PHONE: (517) 349-9499 FAX: (517) 349-6883 | FOR: EUNICE NORTH GAS PLANT EUNICE, NEW MEXICO | | BENZENE ISOCONCENTRATION MAP - (JANUARY/FEBRUARY 2006) | | FIGURE: 19 |
| | JOB NUMBER: 89CH149410.07 | DRAWN BY: RDT | CHECKED BY: | APPROVED BY: | DATE: 05/18/06 |