

GW - 003

**GENERAL
CORRESPONDENCE**

YEAR(S):

2008 - 2005

VonGonten, Glenn, EMNRD

From: Briggs, Jeneé M [JBriggs@chevron.com]
Sent: Thursday, February 21, 2008 3:24 PM
To: VonGonten, Glenn, EMNRD
Cc: dolivier@secor.com; mvizcaino@secor.com
Subject: FW: Administrative Completeness South Eunice Former GP (GW003) discharge permit
Importance: High
Attachments: Figure 1.pdf; Eunice South Site Map.pdf; SITE-MAP-04 Model (1).pdf; Eunice South GW-003 Application-Revised 022108.pdf

Glenn,

Per our discussions on 02/07/08 and again yesterday, attached is the revised application package that specifically addresses the below items you identified as incomplete.

- 100 filing fee was not made out to correct party, Water Quality Management Fund- On 02/07/08, you offered in this instance only to stamp and code the hard copy check once received changing it to the correct payee entity, thus eliminating the need for us to void the old and reissue another check. However in the future instructions to make filling fees payable to Water Quality Management Fund will be followed.
- Complete "brief description of the expected quality and volume of the discharge" - The expected annual discharge volume is approximately 180,000 barrels and the expected discharge TDS quality will range from 27,500 mg/L to 99,000 mg/L.
- Complete "background TDS concentration at the site" -The background TDS concentrations in the site vicinity vary from 1,000 mg/L to 1,300 mg/L.
- Complete the "name of the newspaper in which will provide public notice"- The *Hobbs News-Sun*, 201 N. Thorp St, Hobbs, NM 88240-6058. Phone #: 575-393-2133.

Please reconfirm that the OCD will draft the initial synopsis for our review and comment in accordance with confirming the administratively completeness of this application.

Once the synopsis is finalized, we can then publish the synopsis (in Spanish and English) in a 2"x3" display ad in the *Hobbs News-Sun*. Within fifteen days SECOR shall provide you with proof of the newspaper publication in accordance with 20.6.2.3108.D NMAC and then the remaining steps of the public comment and notification process required by OCD will commence.

Thanks,

Jeneé Briggs
 Project Manager

Chevron Environmental Management Company

Upstream Business Unit
 1400 Smith Street
 Room 19001B
 Houston, TX 77002
 Tel 713.372.1035
 Fax 713.372.1107
 Mobile 281.543.9826
jbriggs@chevron.com

Confidentiality Note:

2/29/2008

This e-mail message is intended solely for the individual or individuals named above. It may contain confidential attorney-client privileged information and attorney work product. If the reader of this message is not the intended recipient, you are requested not to read, copy, or distribute it or any of the information it contains. Please delete it immediately and notify the sender by return e-mail or by telephone at 713.372.1035.

From: HUDSON, MATTHEW
Sent: Wednesday, February 06, 2008 6:21 PM
To: 'dolivier@secor.com'; 'Moises Vizcaino'; Briggs, Jenee' M
Subject: FW: Administrative Completeness

From: VonGonten, Glenn, EMNRD [mailto:Glenn.VonGonten@state.nm.us]
Sent: Wednesday, February 06, 2008 5:47 PM
To: HUDSON, MATTHEW
Cc: Price, Wayne, EMNRD
Subject: Administrative Completeness

Matt,

OCD conducts a quick admin completeness review pursuant to WQCC regulations (20.6.2.3108C and E NMAC) before beginning the public notice process. The permit renewal application for GW003 is not complete.

Please submit a revised application that includes the required "brief description of the expected quality and volume of the discharge." The application states that this information is provided to the SEO. OCD must be provided this estimate in the application. Also, the application did not provide the TDS concentration at the site. Finally, Chevron must provide the name of the newspaper in which it will provide public notice.

Thanks,

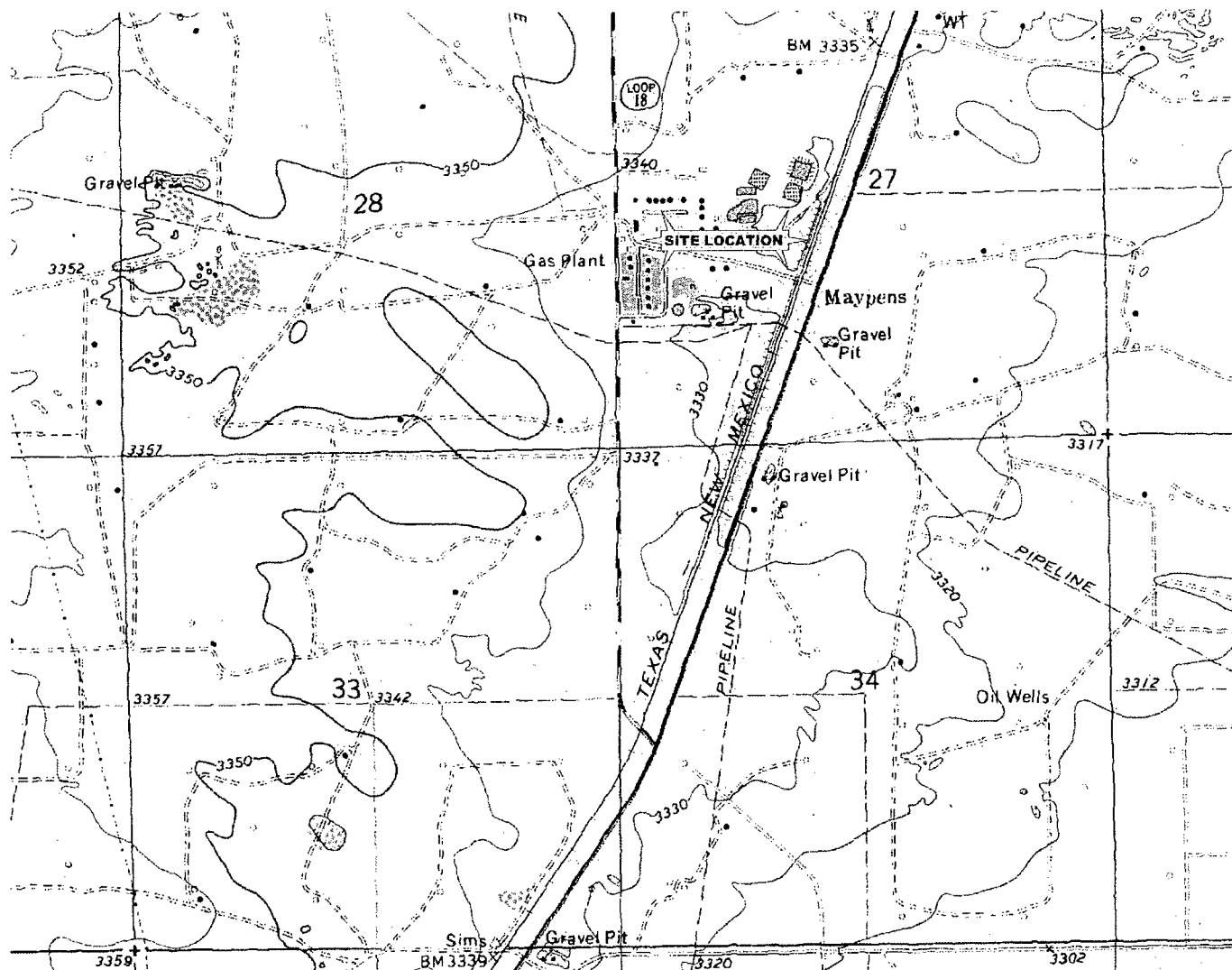
Glenn

Glenn von Gonten
Senior Hydrologist
Oil Conservation Division, EMNRD
505-476-3488
fax: 505-476-3462
glenn.vongonten@state.nm.us

Confidentiality Notice: This e-mail, including all attachments is for the sole use of the intended recipient (s) and may contain confidential and privileged information. Any unauthorized review, use, disclosure or distribution is prohibited unless specifically provided under the New Mexico Inspection of Public Records Act. If you are not the intended recipient, please contact the sender and destroy all copies of this message. -- This email has been scanned by the Sybari - Antigen Email System.


From: HUDSON, MATTHEW
Sent: Wednesday, February 06, 2008 6:20 PM
To: 'Moises Vizcaino'; 'dolivier@secor.com'; Briggs, Jenee' M
Subject: FW: GW003 Filing Fee

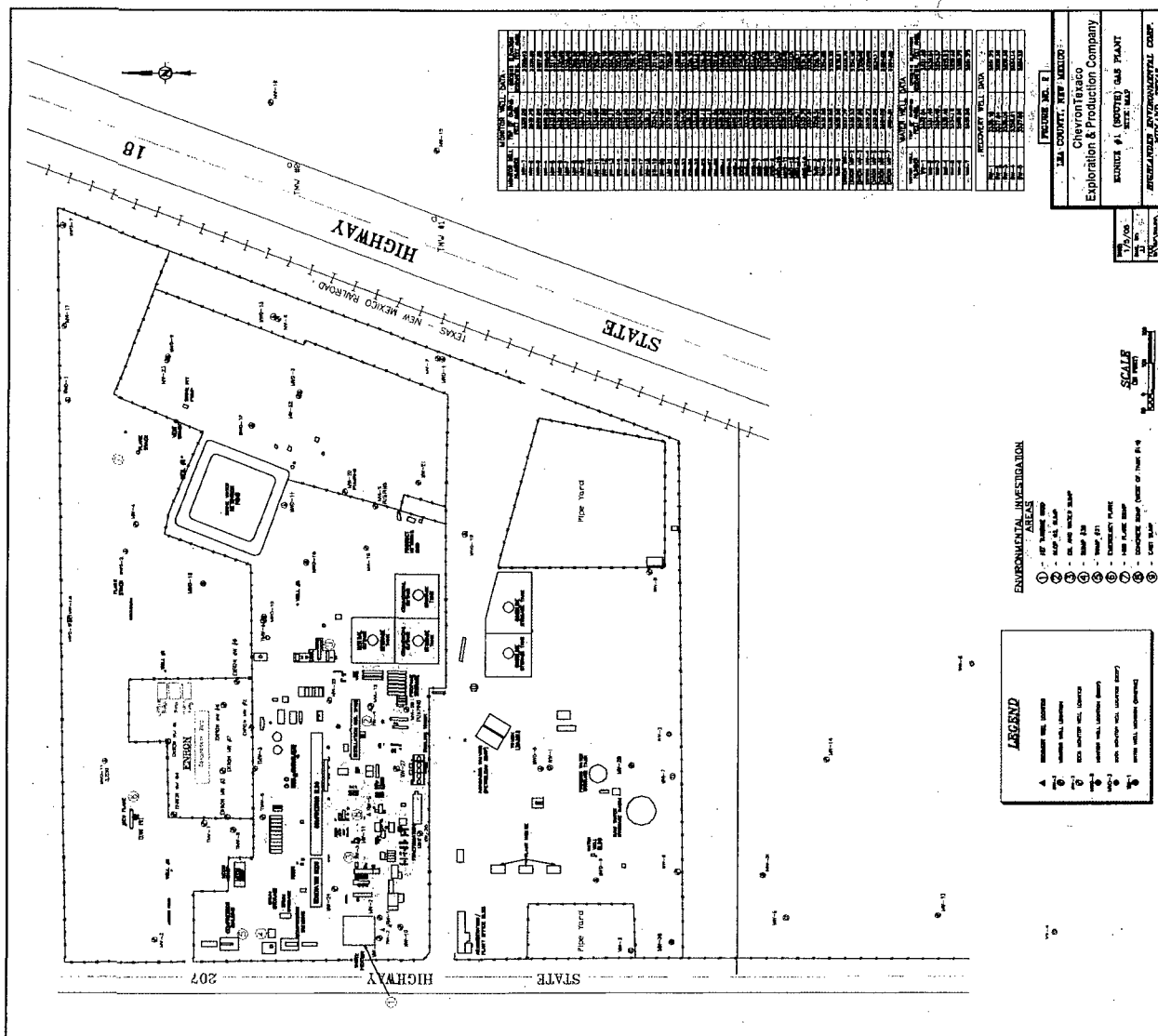
2/29/2008

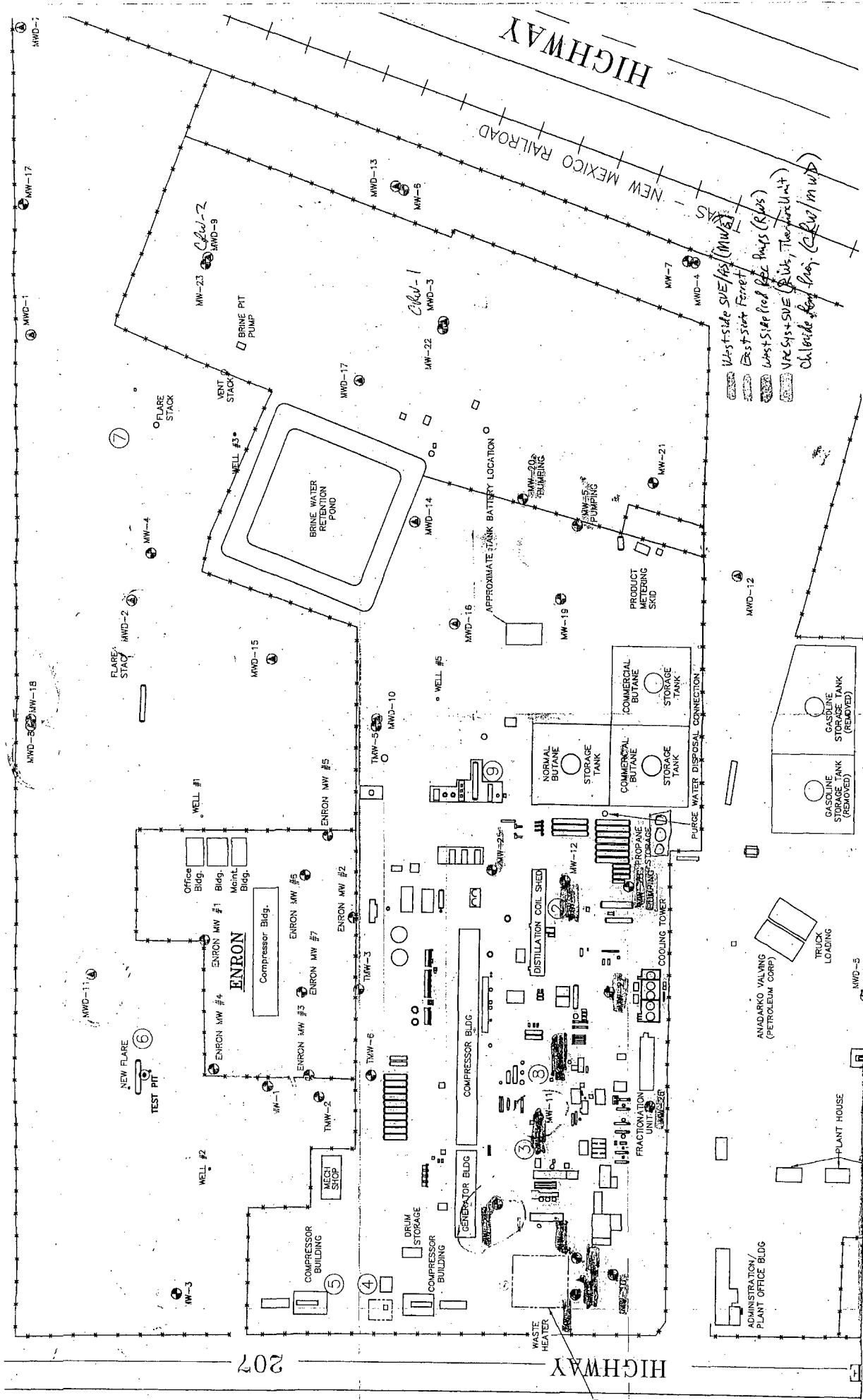


REFERENCE: USGS 7.5 MINUTE QUADRANGLE; EUNICE AND RATTLESNAKE CANYON, NEW MEXICO

No warranty is made by SECOR International, Inc. as to the accuracy, reliability, or completeness of these data. Original data were compiled from various sources. This information may not meet National Map Accuracy Standards. This product was developed electronically, and may be updated without notification. Any reproduction may result in a loss of scale and/or information.

 <p>SECOR 2321 Club Meridian Drive, Suite E. Okemos, Michigan PHONE: (517) 349-9499 FAX: (517) 349-6863</p>	<p>FOR:</p> <p>CHEVRON EUNICE SOUTH GAS PLANT EUNICE, NEW MEXICO</p>		<p>SITE LOCATION MAP</p>		<p>FIGURE:</p> <p>1</p>
<p>JOB NUMBER: 89CH.49389.01</p>	<p>DRAWN BY: ERM</p>	<p>CHECKED BY: RDT</p>	<p>APPROVED BY: RDT</p>	<p>DATE: 10/21/05</p>	





HIGHWAY 207

HIGHWAY 1

NEW MEXICO RAILROAD

- Westside SUE/AS (MW-2)
- East Side Ferret
- West Side Red Pipe Pits (RWS)
- WV-45+ SUE (RWS, Two are Unit)
- Oilbride from Dig. (C&W/m.w.)

ANADARKO VALVING
(PETROLEUM CORP)

ADMINISTRATION/
PLANT OFFICE BLDG

PLANT HOUSE

TRUCK
LOADING

GASOLINE
STORAGE TANK
(REMOVED)

GASOLINE
STORAGE TANK
(REMOVED)

PURGE WATER DISPOSAL CONNECTION

COMMERCIAL
BUTANE
STORAGE TANK

NORMAL
BUTANE
STORAGE TANK

PROPANE
STORAGE TANK

DISTILLATION COIL SHED

COMPRESSOR BLDG.

GENERATOR BLDG.

DRUM
STORAGE

COMPRESSOR
BUILDING

MECH
SHOP

COMPRESSOR
BUILDING

WELL #2

NEW FLARE

TEST PIT

WELL #1

Office
Bldg.

Bldg.

Maint.
Bldg.

ENRON MW #1

ENRON MW #2

ENRON MW #3

ENRON MW #4

ENRON MW #5

ENRON MW #6

ENRON MW #7

ENRON MW #8

ENRON MW #9

ENRON MW #10

ENRON MW #11

ENRON MW #12

ENRON MW #13

ENRON MW #14

ENRON MW #15

ENRON MW #16

ENRON MW #17

ENRON MW #18

ENRON MW #19

ENRON MW #20

ENRON MW #21

ENRON MW #22

ENRON MW #23

ENRON MW #24

ENRON MW #25

ENRON MW #26

ENRON MW #27

ENRON MW #28

ENRON MW #29

ENRON MW #30

ENRON MW #31

ENRON MW #32

ENRON MW #33

District I
1625 N. French Dr., Hobbs, NM 88240
District II
1301 W. Grand Avenue, Artesia, NM 88210
District III
1000 Rio Brazos Road, Aztec, NM 87410
District IV
1220 S. St. Francis Dr., Santa Fe, NM 87505

State of New Mexico
Energy Minerals and Natural Resources
Oil Conservation Division
1220 South St. Francis Dr.
Santa Fe, NM 87505

Revised June 10, 2003
Submit Original
Plus 1 Copy
to Santa Fe
1 Copy to Appropriate
District Office

**DISCHARGE PLAN APPLICATION FOR SERVICE COMPANIES, GAS PLANTS,
REFINERIES, COMPRESSOR, GEOTHERMAL FACILITIES
AND CRUDE OIL PUMP STATIONS**

(Refer to the OCD Guidelines for assistance in completing the application)

☐ New ☒ Renewal ☐ Modification

1. Type: Eunice South Gas Plant (GW-003)

2. Operator: Chevron U.S.A. Inc.

Address: 11111 South Wilcrest, Houston, TX 77099

Contact Person: Jenee' Briggs / Keith Hall Phone: (713) 372-1035

3. Location: NW /4 SW /4 Section 27 Township 21-S Range 37-E

Submit large scale topographic map showing exact location.

4. Attach the name, telephone number and address of the landowner of the facility site.
5. Attach the description of the facility with a diagram indicating location of fences, pits, dikes and tanks on the facility.
6. Attach a description of all materials stored or used at the facility.
7. Attach a description of present sources of effluent and waste solids. Average quality and daily volume of waste water must be included.
8. Attach a description of current liquid and solid waste collection/treatment/disposal procedures.
9. Attach a description of proposed modifications to existing collection/treatment/disposal systems.
10. Attach a routine inspection and maintenance plan to ensure permit compliance.
11. Attach a contingency plan for reporting and clean-up of spills or releases.
12. Attach geological/hydrological information for the facility. Depth to and quality of ground water must be included.
13. Attach a facility closure plan, and other information as is necessary to demonstrate compliance with any other OCD rules, regulations and/or orders.

14. CERTIFICATION I hereby certify that the information submitted with this application is true and correct to the best of my knowledge and belief.

Name: Keith Hall

Title: Facilities Engineering Manager

Signature: *For Thomas for Keith Hall*

Date: February 5, 2008

E-mail Address: Keith.Hall@chevron.com



SECOR
INTERNATIONAL
INCORPORATED

www.secor.com
3300 N. A St. B8, S200
Midland, TX 79705
432-685-0627 TEL
432-687-1598 FAX

February 3, 2008

Mr. Glenn von Gonten
New Mexico Oil Conservation Division
1220 South St. Francis Dr.
Santa Fe, NM 87505

RE: Permit Renewal for the Eunice South Gas Plant (GW-003), Lea County, New Mexico

Dear Mr. von Gonten:

SECOR International Incorporated (SECOR) is pleased to provide the attached information for the Eunice South Gas Plant to comply with the requirements in the Discharge Plan Application to renew the discharge permit for the Eunice South Gas Plant (GW-003) in Lea County, New Mexico.

A preliminary Discharge Plan Application, topographic map, and \$100.00 filing fee are hereby being submitted for your review and subsequent approval. The work plan attachment and Discharge Plan Application were submitted in 2006 for your review and should be in your files. Specific details of the following application line items are described in the work plan submitted in 2006 and cross-referenced below:

1. *See Permit Application.*
2. *See Permit Application.*
3. *See Permit Application*
4. Attach the name, telephone number and address of the landowner of the facility site.
See attached
5. Attach the description of the facility with a diagram indicating location of fences, pits, dikes and tanks on the facility.
See attached
6. Attach a description of all materials stored or used at the facility.
See attached
7. Attach a description of present sources of effluent and waste solids. Average quality and daily volume of waste water must be included.
See attached
8. Attach a description of current liquid and solid waste collection/treatment/disposal procedures.
See attached

SECOR

Mr. Glenn von Gonten
February 4, 2008
Page 2

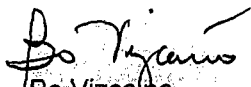
9. Attach a description of proposed modifications to existing collection/treatment/disposal systems.
See attached
10. Attach a routine inspection and maintenance plan to ensure permit compliance.
See attached
11. Attach a contingency plan for reporting and clean-up of spills or releases.
See attached
12. Attach geological/hydrological information for the facility. Depth to and quality of ground water must be included.

See attached site geology description
13. Attach a facility closure plan, and other information as is necessary to demonstrate compliance with any other OCD rules, regulations and/or orders.
See attached.

Should you have any questions regarding the enclosed application, please contact me at (432) 685-0627 extension 29.

Respectfully,

SECOR International Incorporated


Bo Vizcalno
Project Manager

Attachments:

Discharge Plan Application

Cc:

Wayne Price, NMOCD
Jenee Briggs, CEMC
Scott Olivier, SECOR

DISCHARGE PERMIT APPLICATION

Item #1. See permit application

Item #2. See permit application

Item #3. See permit application

Item #4: Chevron owns the land where the plant presently is situated. The facility is unoccupied and is presently being dismantled. There are no active telephone systems at the site. Targa Resources presently operates a compressor and three condensate tanks at the site. A flare is also operational at this time. A deep well injection system is also operated within the plant confines. SECOR is presently pumping recovered chloride-contaminated groundwater into the injection system.

Item #5. See attached diagram

Item #6. At present, the only stored materials are the product that is being recovered by the ferret pumping system at the site and the chloride-contaminated groundwater that is being injected back into the ground. The pits that were previously used to store the chloride-containing materials and brine have been decommissioned. The main pit was emptied of all brine materials and rendered unusable by removing a section of the containment wall.

Item #7. The quantities of recovered ground water are reported to the NMOSE on a quarterly basis. Targa Resources receives a monthly tabulation of the barrels of recovered groundwater.

Item #8. The only liquids that are collected at the site are the recovered chloride-contaminated water, which are then injected back into the formation via an injection well.

Item #9. The only modifications to the system will be incorporated once all the demolition is completed. At that time, an evaluation will be made to determine what system will be installed to recover the hydrocarbon located beneath the plant. Current demolition activities prevent the actual removal of such contaminants.

Item #10. Weekly routine inspections of the ground water recovery system are made. Reports are generated on a monthly basis to the operator and quarterly reports are submitted to the New Mexico Office of the State Engineer.

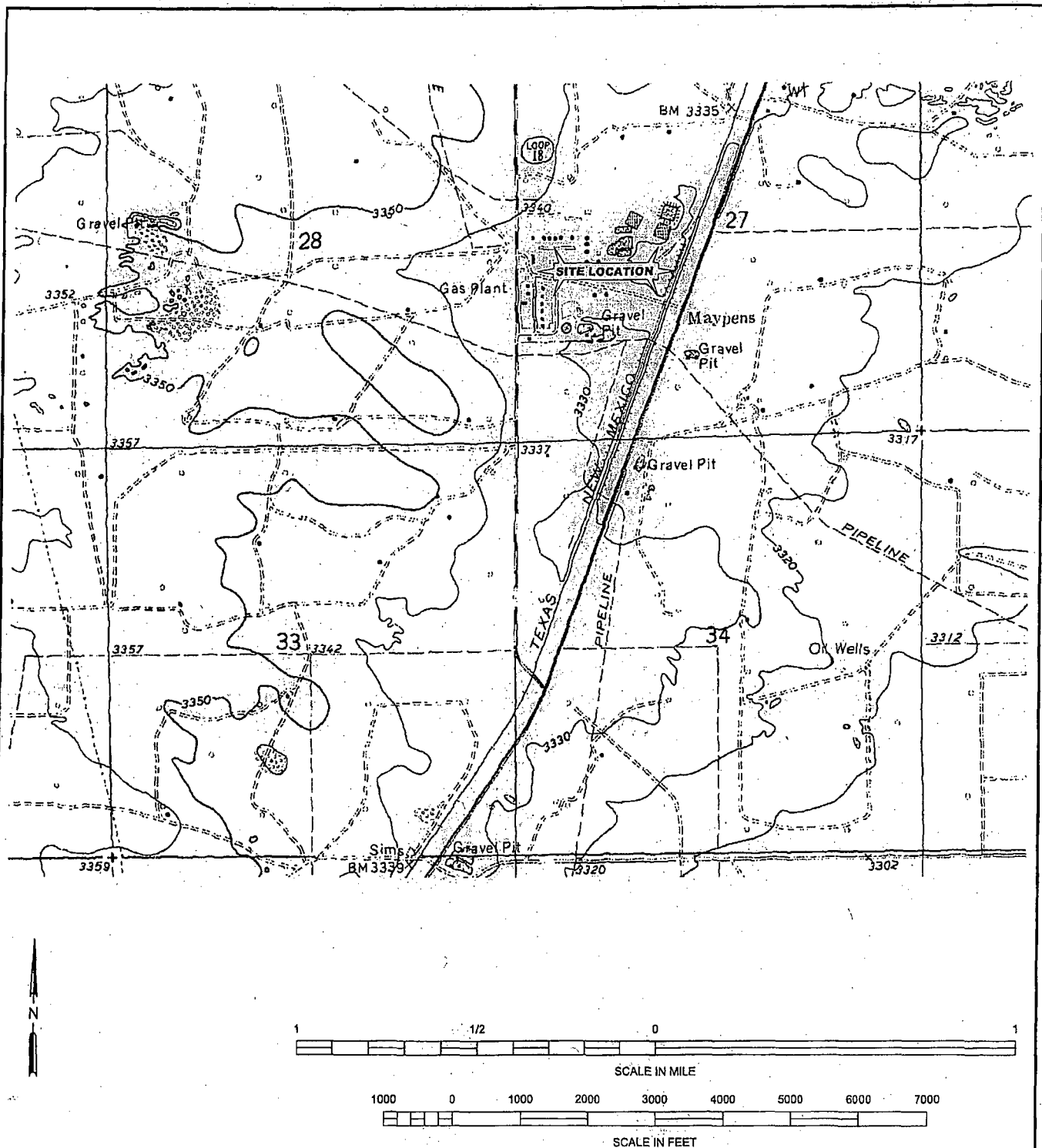
Item #11. The only possible method of incurring a release is if the poly lines are ruptured by demolition equipment or over-pressuring of the injection well system.

Item #12. See attached geological report

Item #13. The facility closure plan specifies the remediation of the hydrocarbon contamination beneath the plant and the investigation of the area beneath the brine pit to


ascertain the extent of contamination beneath the site. Until the demolition is completed, only the chloride recovery wells will be monitored.

Eunice South Site Location Map.dwg



REFERENCE: USGS 7.5 MINUTE QUADRANGLE; EUNICE AND
RATTLESNAKE CANYON, NEW MEXICO

No warranty is made by SECOR International, Inc. as to the accuracy, reliability, or completeness of these data. Original data were
compiled from various sources. This information may not meet National Map Accuracy Standards. This product was developed
electronically, and may be updated without notification. Any reproduction may result in a loss of scale and/or information.

 SECOR 2321 Club Meridian Drive, Suite E Okemos, Michigan PHONE: (517) 349-9499 FAX: (517) 349-8863	FOR: CHEVRON EUNICE SOUTH GAS PLANT EUNICE, NEW MEXICO		SITE LOCATION MAP		FIGURE: 1
	JOB NUMBER: 89CH49389.01	DRAWN BY: ERM	CHECKED BY: RDT	APPROVED BY: RDT	DATE: 10/21/05

EUNICE SOUTH GAS PLANT

Eunice, New Mexico

1.1 Site Physical Characteristics and Hydrogeologic Setting

1.3.1 Physiography

The Site is located in the southeast corner of New Mexico approximately five miles due south of the City of Eunice in the southern half of Lea County. The Site lies in the southern High Plains of the Great Plains physiographic province. The Site lies in the Eunice Plain, which is bounded on the south by the South Plain, on the east by Rattlesnake Ridge, on the northeast by the High Plains, on the northwest by the Laguna Valley and Gramma Ridge Area, on the west by the San Simone Ridge and San Simone Swale, and to the west by the Antelope Ridge Area.

1.3.2 Topography

Monument Draw is the major surface drainage feature in the area. It is located approximately two and one-half miles to the east of the site. The site topography slopes gently toward Monument Draw at approximately 25 feet per mile. Small closed basins or playas exist on this eastward sloping surface of the draw. Accumulation of precipitation in these playas is the primary source of aquifer recharge.

1.3.3 Geology

The geologic formations of interest at the site include (from the oldest to the youngest): Triassic Chinle, Cretaceous undifferentiated, Tertiary Ogallala, and Quaternary windblown (eolian) sediments, designated as the Blackwater Draw Formation. Of particular interest with regard to the groundwater impact at the site are the Tertiary Ogallala and the Blackwater Draw which together make up the Ogallala Aquifer.

1.3.3.1 Triassic Chinle Formation

The Triassic Chinle Formation is composed of red and yellowish-green claystone interbedded with fine-grained sandstones and siltstones. The top of the Chinle (base of the Ogallala Aquifer) is an erosional surface.

1.3.3.2 Cretaceous Formations Undifferentiated

The Cretaceous formations have all been eroded and have not been encountered at the site.

1.3.3.3 Tertiary Ogallala

The lower Tertiary Ogallala Formation is the primary fresh water bearing formation in the vicinity and under the site. The Ogallala Formation rests unconformably upon the claystones, sandstones, and siltstones of the Triassic Chinle Formation. The formation is a heterogeneous combination of clay silt, sand, and gravel of braided-stream deposits interbedded with, and overlain by, eolian sediments deposited as sand sheets and loess. These river or stream related (fluvial or alluvial) sediments were deposited on a sloping plain in the form of coalescing alluvial fans by streams that originated in the Rocky

Mountains to the west and northwest. The Ogallala Formation was deposited in lenses of predominately medium to yellowish-brown conglomeratic sandstone. In contrast to the fluvial deposition of the lower Ogallala sediments, the upper part of the Ogallala and all of the Blackwater Draw Formation overlying the Ogallala Formation are composed of eolian deposits.

1.3.3.4 Quaternary Blackwater Draw Formation

The Blackwater Draw Formation occurs as a mantle of Quaternary eolian sediments throughout the Southern High Plains. During the depositional time of the Blackwater Draw laterally restricted lenticular layers of eolian and playa lake (lacustrine) facies were formed. The Blackwater Draw occurs below the relatively well developed soils at the site and contains five to 20 feet of firm to hard caliche that is overlain by reddish sediments composed of moderately well developed soils.

1.3.4 Hydrogeology

The primary source of fresh water at the Site is the Ogallala Aquifer. The Ogallala Aquifer at the Site consists of the fluvial and eolian sediments of the Tertiary Ogallala Formation and the eolian sediments of the Quaternary Blackwater Draw Formation. The Ogallala aquifer is bounded unconformably upon the erosional surface of the claystones, sandstones, and siltstones of the Triassic Chinle Formation. The Chinle forms the base of the fresh groundwater in the area because of the Chinle's low vertical permeability.

The base of the Ogallala Aquifer is composed of five to ten feet of gravel, sand, and clay. This gravel unit is overlain by alternating layers of loose and well consolidated red and yellow sandstones. Overall depth to groundwater roughly varies with topography across the site, ranging from 46 to 56 feet below ground surface.

In this area the groundwater gradient generally slopes to the southeast, following the topographic slope toward Monument Draw.



UNITED STATES
POSTAL SERVICE

POSTAL MONEY ORDER

.15-600
1000

SERIAL NUMBER
11200123451

YEAR MONTH DAY
2008-02-06

POST OFFICE
797015

U.S. DOLLARS AND CENTS

001000000

ONE HUNDRED DOLLARS & 00¢

AMOUNT

PAY TO
New Mexico Oil Conservation Division

NEGOTIABLE ONLY IN THE U.S. AND POSSESSIONS
SEE REVERSE WARNING

ADDRESS
1220 S. St. Francis Dr
Santa Fe, NM

FROM
SECOR Int'l

CLERK
0001

ADDRESS
3300 N. A St
Midland, TX 79705

E.O.D. NO. OR
USED FOR
Eunice South GP Permit App. 6003

00000080021

112001234511

From: VonGonten, Glenn, EMNRD [mailto:Glenn.VonGonten@state.nm.us]
Sent: Wednesday, February 06, 2008 4:47 PM
To: HUDSON, MATTHEW
Subject: GW003 Filing Fee

Matt,

I have received Chevron's renewal application for the South Eunice Former GP (GW003) discharge permit. It included a copy of the \$100 filing fee, but it is not made out to the Water Quality Management Fund, pursuant to 20.6.2.3114A NMAC. To avoid further confusion and delay, I suggest that Chevron submit the required check from your office. I will either void the postal money order submitted by Secor or return it.

Thanks,

Glenn

Glenn von Gonten
Senior Hydrologist
Oil Conservation Division, EMNRD
505-476-3488
fax: 505-476-3462
glenn.vongonten@state.nm.us

Confidentiality Notice: This e-mail, including all attachments is for the sole use of the intended recipient (s) and may contain confidential and privileged information. Any unauthorized review, use, disclosure or distribution is prohibited unless specifically provided under the New Mexico Inspection of Public Records Act. If you are not the intended recipient, please contact the sender and destroy all copies of this message. -- This email has been scanned by the Sybari - Antigen Email System.

This inbound email has been scanned by the MessageLabs Email Security System.

2/29/2008

VonGonten, Glenn, EMNRD

From: Moises Vizcaino [mvizcaino@secor.com]
Sent: Thursday, February 07, 2008 9:21 AM
To: VonGonten, Glenn, EMNRD
Cc: HUDSON, MATTHEW
Subject: Filing Fee for G-003 Permit Application
Importance: High

Glenn:

Can SECOR send you another check made out to the Water Quality Development Fund and you return the previously-submitted money order to me? Or do specifically want Chevron to cut the check. Please advise. Thank you.

Bo Vizcaino

This inbound email has been scanned by the MessageLabs Email Security System.

2/29/2008

VonGonten, Glenn, EMNRD

From: Moises Vizcaino [mvizcaino@secor.com]
Sent: Thursday, February 07, 2008 7:46 AM
To: VonGonten, Glenn, EMNRD
Subject: Water Quality at Eunice South

Glenn:

The estimated volume of water that is reported to the New Mexico Office of the State Engineer is 180,000 barrels of water per year and the chloride concentrations range from 1,000 parts per million (pp) in the distal wells and 70,000 ppm in the deep wells near Monitor Well MWD-3 on the southeastern side of the site. The Public Notice, if required, will be printed in the Eunice Press. Thank you.

Bo Vizcaino

This inbound email has been scanned by the MessageLabs Email Security System.

2/29/2008

VonGonten, Glenn, EMNRD

From: Moises Vizcaino [mvizcaino@secor.com]
Sent: Wednesday, February 06, 2008 3:27 PM
To: VonGonten, Glenn, EMNRD
Cc: Scott Olivier; Briggs, Jene'e M; MHKW@chevron.com; Glenn Kimmell
Subject: Eunice South Permit Application (G-003)
Importance: High
Attachments: \$100 Permit Application Fee Eunice South G-003.pdf; Eunice South Permit Application Documents.pdf; Eunice South Permit Application G-003.pdf

Glenn:

Attached is the Discharge Permit Application for the Eunice South Gas Plant. You should receive the package tomorrow, as agreed. All pertinent data and the \$100.00 fee are included in the FEDEX package (US Air Bill #: 8583 2812 9581). Thank you. Please call me if you have any questions regarding the information I have submitted. Thank you.

Bo Vizcaino
Project Manager
SECOR International, Inc.

This inbound email has been scanned by the MessageLabs Email Security System.

2/29/2008

District I
1625 N. French Dr., Hobbs, NM 88240
District II
1301 W. Grand Avenue, Artesia, NM 88210
District III
1000 Rio Brazos Road, Aztec, NM 87410
District IV
1220 S. St. Francis Dr., Santa Fe, NM 87505

State of New Mexico
Energy Minerals and Natural Resources
Oil Conservation Division
1220 South St. Francis Dr.
Santa Fe, NM 87505

Revised June 10, 2003

Submit Original
Plus 1 Copy
to Santa Fe
1 Copy to Appropriate
District Office

**DISCHARGE PLAN APPLICATION FOR SERVICE COMPANIES, GAS PLANTS,
REFINERIES, COMPRESSOR, GEOTHERMAL FACILITIES
AND CRUDE OIL PUMP STATIONS**

(Refer to the OCD Guidelines for assistance in completing the application)

☐ New ☒ Renewal ☐ Modification

1. Type: Eunice South Gas Plant (GW-003)

2. Operator: Chevron U.S.A. Inc.

Address: 11111 South Wilcrest, Houston, TX 77099

Contact Person: Jenee' Briggs / Keith Hall Phone: (713) 372-1035

3. Location: NW /4 SW /4 Section 27 Township 21-S Range 37-E

Submit large scale topographic map showing exact location.

4. Attach the name, telephone number and address of the landowner of the facility site.
5. Attach the description of the facility with a diagram indicating location of fences, pits, dikes and tanks on the facility.
6. Attach a description of all materials stored or used at the facility.
7. Attach a description of present sources of effluent and waste solids. Average quality and daily volume of waste water must be included.
8. Attach a description of current liquid and solid waste collection/treatment/disposal procedures.
9. Attach a description of proposed modifications to existing collection/treatment/disposal systems.
10. Attach a routine inspection and maintenance plan to ensure permit compliance.
11. Attach a contingency plan for reporting and clean-up of spills or releases.
12. Attach geological/hydrological information for the facility. Depth to and quality of ground water must be included.
13. Attach a facility closure plan, and other information as is necessary to demonstrate compliance with any other OCD rules, regulations and/or orders.
14. CERTIFICATION I hereby certify that the information submitted with this application is true and correct to the best of my knowledge and belief.

Name: Keith Hall

Title: Facilities Engineering Manager

Signature: *For signature for Keith Hall*

Date: February 5, 2008

E-mail Address: Keith.Hall@chevron.com



SECOR
INTERNATIONAL
INCORPORATED

www.secor.com
3300 N. A St, B8, S200
Midland, TX 79705
432-685-0627 TEL
432-687-1598 FAX

February 3, 2008

Mr. Glenn von Gonten
New Mexico Oil Conservation Division
1220 South St. Francis Dr.
Santa Fe, NM 87505

RE: Permit Renewal for the Eunice South Gas Plant (GW-003), Lea County, New Mexico

Dear Mr. von Gonten:

SECOR International Incorporated (SECOR) is pleased to provide the attached information for the Eunice South Gas Plant to comply with the requirements in the Discharge Plan Application to renew the discharge permit for the Eunice South Gas Plant (GW-003) in Lea County, New Mexico.

A preliminary Discharge Plan Application, topographic map, and \$100.00 filing fee are hereby being submitted for your review and subsequent approval. The work plan attachment and Discharge Plan Application were submitted in 2006 for your review and should be in your files. Specific details of the following application line items are described in the work plan submitted in 2006 and cross-referenced below:

1. *See Permit Application.*
2. *See Permit Application.*
3. *See Permit Application*
4. Attach the name, telephone number and address of the landowner of the facility site.
See attached
5. Attach the description of the facility with a diagram indicating location of fences, pits, dikes and tanks on the facility.
See attached
6. Attach a description of all materials stored or used at the facility.
See attached
7. Attach a description of present sources of effluent and waste solids. Average quality and daily volume of waste water must be included.
See attached .
8. Attach a description of current liquid and solid waste collection/treatment/disposal procedures.
See attached

SECOR

Mr. Glenn von Gonten
February 4, 2008
Page 2

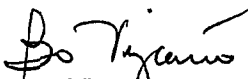
9. Attach a description of proposed modifications to existing collection/treatment/disposal systems.
See attached
10. Attach a routine inspection and maintenance plan to ensure permit compliance.
See attached
11. Attach a contingency plan for reporting and clean-up of spills or releases.
See attached
12. Attach geological/hydrological information for the facility. Depth to and quality of ground water must be included.

See attached site geology description
13. Attach a facility closure plan, and other information as is necessary to demonstrate compliance with any other OCD rules, regulations and/or orders.
See attached.

Should you have any questions regarding the enclosed application, please contact me at (432) 685-0627 extension 29.

Respectfully,

SECOR International Incorporated


Bo Vizcalmo
Project Manager

Attachments:

Discharge Plan Application

Cc:

Wayne Price, NMOCD
Jene Briggs, CEMC
Scott Olivier, SECOR

DISCHARGE PERMIT APPLICATION

Item #1. See permit application

Item #2. See permit application

Item #3. See permit application

Item #4: Chevron owns the land where the plant presently is situated. The facility is unoccupied and is presently being dismantled. There are no active telephone systems at the site. Targa Resources presently operates a compressor and three condensate tanks at the site. A flare is also operational at this time. A deep well injection system is also operated within the plant confines. SECOR is presently pumping recovered chloride-contaminated groundwater into the injection system.

Item #5. See attached diagram

Item #6. At present, the only stored materials are the product that is being recovered by the ferret pumping system at the site and the chloride-contaminated groundwater that is being injected back into the ground. The pits that were previously used to store the chloride-containing materials and brine have been decommissioned. The main pit was emptied of all brine materials and rendered unusable by removing a section of the containment wall.

Item #7. The quantities of recovered ground water are reported to the NMOSE on a quarterly basis. Targa Resources receives a monthly tabulation of the barrels of recovered groundwater.

Item #8. The only liquids that are collected at the site are the recovered chloride-contaminated water, which are then injected back into the formation via an injection well.

Item #9. The only modifications to the system will be incorporated once all the demolition is completed. At that time, an evaluation will be made to determine what system will be installed to recover the hydrocarbon located beneath the plant. Current demolition activities prevent the actual removal of such contaminants.

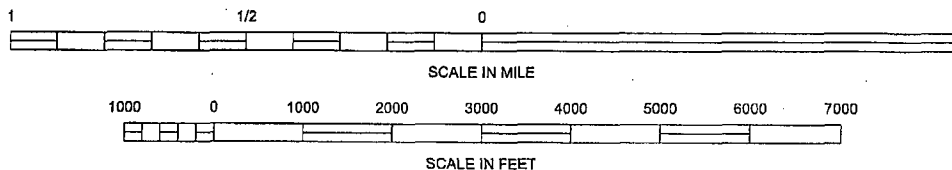
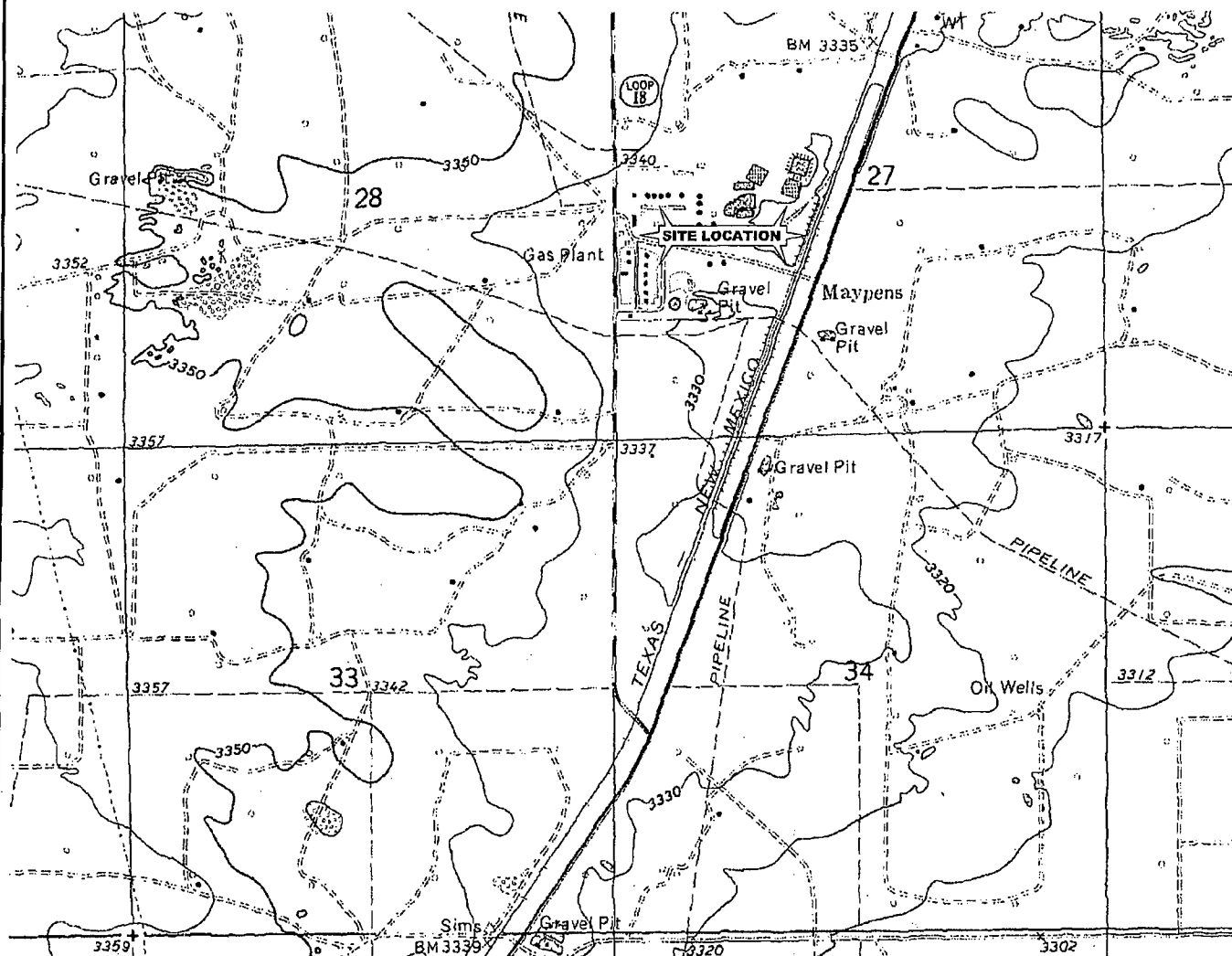
Item #10. Weekly routine inspections of the ground water recovery system are made. Reports are generated on a monthly basis to the operator and quarterly reports are submitted to the New Mexico Office of the State Engineer.

Item #11. The only possible method of incurring a release is if the poly lines are ruptured by demolition equipment or over-pressuring of the injection well system.

Item #12. See attached geological report


Item #13. The facility closure plan specifies the remediation of the hydrocarbon contamination beneath the plant and the investigation of the area beneath the brine pit to

ascertain the extent of contamination beneath the site. Until the demolition is completed, only the chloride recovery wells will be monitored.



REFERENCE: USGS 7.5 MINUTE QUADRANGLE; EUNICE AND RATTLESNAKE CANYON, NEW MEXICO

No warranty is made by SECOR International, Inc. as to the accuracy, reliability, or completeness of these data. Original data were compiled from various sources. This information may not meet National Map Accuracy Standards. This product was developed electronically, and may be updated without notification. Any reproduction may result in a loss of scale and/or information.

 SECOR 2321 Club Meridian Drive, Suite E Okemos, Michigan PHONE: (517) 349-9499 FAX: (517) 349-8863	FOR: CHEVRON EUNICE SOUTH GAS PLANT EUNICE, NEW MEXICO		SITE LOCATION MAP		FIGURE: 1
	JOB NUMBER: 89CH.49389.01	DRAWN BY: ERM	CHECKED BY: RDT	APPROVED BY: RDT	DATE: 10/21/05

EUNICE SOUTH GAS PLANT

Eunice, New Mexico

1.1 Site Physical Characteristics and Hydrogeologic Setting

1.3.1 Physiography

The Site is located in the southeast corner of New Mexico approximately five miles due south of the City of Eunice in the southern half of Lea County. The Site lies in the southern High Plains of the Great Plains physiographic province. The Site lies in the Eunice Plain, which is bounded on the south by the South Plain, on the east by Rattlesnake Ridge, on the northeast by the High Plains, on the northwest by the Laguna Valley and Gramma Ridge Area, on the west by the San Simone Ridge and San Simone Swale, and to the west by the Antelope Ridge Area.

1.3.2 Topography

Monument Draw is the major surface drainage feature in the area. It is located approximately two and one-half miles to the east of the site. The site topography slopes gently toward Monument Draw at approximately 25 feet per mile. Small closed basins or playas exist on this eastward sloping surface of the draw. Accumulation of precipitation in these playas is the primary source of aquifer recharge.

1.3.3 Geology

The geologic formations of interest at the site include (from the oldest to the youngest): Triassic Chinle; Cretaceous undifferentiated; Tertiary Ogallala; and Quaternary windblown (eolian) sediments, designated as the Blackwater Draw Formation. Of particular interest with regard to the groundwater impact at the site are the Tertiary Ogallala and the Blackwater Draw which together make up the Ogallala Aquifer.

1.3.3.1 Triassic Chinle Formation

The Triassic Chinle Formation is composed of red and yellowish-green claystone interbedded with fine-grained sandstones and siltstones. The top of the Chinle (base of the Ogallala Aquifer) is an erosional surface.

1.3.3.2 Cretaceous Formations Undifferentiated

The Cretaceous formations have all been eroded and have not been encountered at the site.

1.3.3.3 Tertiary Ogallala

The lower Tertiary Ogallala Formation is the primary fresh water bearing formation in the vicinity and under the site. The Ogallala Formation rests unconformably upon the claystones, sandstones, and siltstones of the Triassic Chinle Formation. The formation is a heterogeneous combination of clay silt, sand, and gravel of braided-stream deposits interbedded with, and overlain by, eolian sediments deposited as sand sheets and loess. These river or stream related (fluvial or alluvial) sediments were deposited on a sloping plain in the form of coalescing alluvial fans by streams that originated in the Rocky

Mountains to the west and northwest. The Ogallala Formation was deposited in lenses of predominately medium to yellowish-brown conglomeratic sandstone. In contrast to the fluvial deposition of the lower Ogallala sediments, the upper part of the Ogallala and all of the Blackwater Draw Formation overlying the Ogallala Formation are composed of eolian deposits.

1.3.3.4 Quaternary Blackwater Draw Formation

The Blackwater Draw Formation occurs as a mantle of Quaternary eolian sediments throughout the Southern High Plains. During the depositional time of the Blackwater Draw laterally restricted lenticular layers of eolian and playa lake (lacustrine) facies were formed. The Blackwater Draw occurs below the relatively well developed soils at the site and contains five to 20 feet of firm to hard caliche that is overlain by reddish sediments composed of moderately well developed soils.

1.3.4 Hydrogeology

The primary source of fresh water at the Site is the Ogallala Aquifer. The Ogallala Aquifer at the Site consists of the fluvial and eolian sediments of the Tertiary Ogallala Formation and the eolian sediments of the Quaternary Blackwater Draw Formation. The Ogallala aquifer is bounded unconformably upon the erosional surface of the claystones, sandstones, and siltstones of the Triassic Chinle Formation. The Chinle forms the base of the fresh groundwater in the area because of the Chinle's low vertical permeability.

The base of the Ogallala Aquifer is composed of five to ten feet of gravel, sand, and clay. This gravel unit is overlain by alternating layers of loose and well consolidated red and yellow sandstones. Overall depth to groundwater roughly varies with topography across the site, ranging from 46 to 56 feet below ground surface.

In this area the groundwater gradient generally slopes to the southeast, following the topographic slope toward Monument Draw.



UNITED STATES
POSTAL SERVICE®

POSTAL MONEY ORDER

15-800
000

SERIAL NUMBER 11200123451		YEAR, MONTH, DAY 2008-02-06	POST OFFICE 797015	U.S. DOLLARS AND CENTS 100.00	
AMOUNT ONE HUNDRED DOLLARS & 00¢		*****			
PAY TO New Mexico Oil Conservation Division			NEGOTIABLE ONLY IN THE U.S. AND POSSESSIONS SEE REVERSE WARNING		
ADDRESS 1220 S. St. Francis Dr Santa Fe, NM			FROM SECOR Int'l	CLERK 0001	
C.O.D. NO. OR USED FOR Emilee South GP Permit App. 6003			Midland, TX 79705		
00000080021			11200123451		

VonGonten, Glenn, EMNRD

From: HUDSON, MATTHEW [MHudson@chevron.com]
Sent: Monday, February 04, 2008 8:48 AM
To: VonGonten, Glenn, EMNRD
Subject: RE:

Thanks. I just wanted to make sure it wasn't recent. I have a 2007 report to be submitted, but wanted to make sure my consultant didn't jump the gun.

From: VonGonten, Glenn, EMNRD [mailto:Glenn.VonGonten@state.nm.us]
Sent: Monday, February 04, 2008 9:36 AM
To: HUDSON, MATTHEW
Subject: RE:

Matt,

It was the 2005 Annual Groundwater Monitoring Report, Buckeye Vacuum Field Unit, submitted by Scott Toner on July 5, 2006. It's been scanned already and is available online.

Glenn

From: HUDSON, MATTHEW [mailto:MHudson@chevron.com]
Sent: Monday, February 04, 2008 8:15 AM
To: VonGonten, Glenn, EMNRD
Subject: RE:

Glenn,

Out of curiosity, what is the title and date on the Buckeye report? I don't think I've sent one to you recently.

Matt

From: VonGonten, Glenn, EMNRD [mailto:Glenn.VonGonten@state.nm.us]
Sent: Friday, February 01, 2008 2:27 PM
To: HUDSON, MATTHEW
Subject: RE:

Matt,

Sounds good. The Buckeye site is GW029 and the permit will not expire until 2011.

Glenn

From: HUDSON, MATTHEW [mailto:MHudson@chevron.com]
Sent: Friday, February 01, 2008 1:14 PM
To: VonGonten, Glenn, EMNRD
Cc: Briggs, Jene'e M
Subject: Re:

2/29/2008

Glenn,

We're finalizing the Eunice South permit renewal, and should have that to you next week. On Eunice North, it appears we have not done the public notice yet, but we're working on that as we speak. On the Buckeye report, I'll find that out and get back to you. We discussed it at our meeting, but I don't recall the reference number. I'm traveling today, but I'll get back to you when I'm back in the office.

Thanks,
Matt

Sent from the handheld of Matt Hudson

----- Original Message -----

From: VonGonten, Glenn, EMNRD <Glenn.VonGonten@state.nm.us>

To: HUDSON, MATTHEW

Sent: Fri Feb 01 11:35:46 2008

Subject:

Matt,

What is the status on the submittal of the discharge permit renewal for the South Eunice GP? Also, what did you find out about the public notice for the North Eunice GP? Also, also, I have a ground water monitoring report for the Buckeye Vacuum Field Unit from Secor, but I can't determine what OCD Case Number has been assigned to this site. Did we talk about this at our meeting last year?

Glenn

Confidentiality Notice: This e-mail, including all attachments is for the sole use of the intended recipient(s) and may contain confidential and privileged information. Any unauthorized review, use, disclosure or distribution is prohibited unless specifically provided under the New Mexico Inspection of Public Records Act. If you are not the intended recipient, please contact the sender and destroy all copies of this message. -- This email has been scanned by the Sybari - Antigen Email System.

This inbound email has been scanned by the MessageLabs Email Security System.

Confidentiality Notice: This e-mail, including all attachments is for the sole use of the intended recipient (s) and may contain confidential and privileged information. Any unauthorized review, use, disclosure or distribution is prohibited unless specifically provided under the New Mexico Inspection of Public Records Act. If you are not the intended recipient, please contact the sender and destroy all copies of this message. -- This email has been scanned by the Sybari - Antigen Email System.

This inbound email has been scanned by the MessageLabs Email Security System.

2/29/2008

Confidentiality Notice: This e-mail, including all attachments is for the sole use of the intended recipient (s) and may contain confidential and privileged information. Any unauthorized review, use, disclosure or distribution is prohibited unless specifically provided under the New Mexico Inspection of Public Records Act. If you are not the intended recipient, please contact the sender and destroy all copies of this message. -- This email has been scanned by the Sybari - Antigen Email System.

This inbound email has been scanned by the MessageLabs Email Security System.

VonGonten, Glenn, EMNRD

From: HUDSON, MATTHEW [MHudson@chevron.com]
Sent: Monday, February 04, 2008 8:15 AM
To: VonGonten, Glenn, EMNRD
Subject: RE:

Glenn,

Out of curiosity, what is the title and date on the Buckeye report? I don't think I've sent one to you recently.

Matt

From: VonGonten, Glenn, EMNRD [mailto:Glenn.VonGonten@state.nm.us]
Sent: Friday, February 01, 2008 2:27 PM
To: HUDSON, MATTHEW
Subject: RE:

Matt,

Sounds good. The Buckeye site is GW029 and the permit will not expire until 2011.

Glenn

From: HUDSON, MATTHEW [mailto:MHudson@chevron.com]
Sent: Friday, February 01, 2008 1:14 PM
To: VonGonten, Glenn, EMNRD
Cc: Briggs, Jene'e M
Subject: Re:

Glenn,

We're finalizing the Eunice South permit renewal, and should have that to you next week. On Eunice North, it appears we have not done the public notice yet, but we're working on that as we speak. On the Buckeye report, I'll find that out and get back to you. We discussed it at our meeting, but I don't recall the reference number. I'm traveling today, but I'll get back to you when I'm back in the office.

Thanks,
Matt

Sent from the handheld of Matt Hudson

----- Original Message -----

From: VonGonten, Glenn, EMNRD <Glenn.VonGonten@state.nm.us>
To: HUDSON, MATTHEW
Sent: Fri Feb 01 11:35:46 2008
Subject:

Matt,

2/29/2008

What is the status on the submittal of the discharge permit renewal for the South Eunice GP? Also, what did you find out about the public notice for the North Eunice GP? Also, also, I have a ground water monitoring report for the Buckeye Vacuum Field Unit from Secor, but I can't determine what OCD Case Number has been assigned to this site. Did we talk about this at our meeting last year?

Glenn

Confidentiality Notice: This e-mail, including all attachments is for the sole use of the intended recipient(s) and may contain confidential and privileged information. Any unauthorized review, use, disclosure or distribution is prohibited unless specifically provided under the New Mexico Inspection of Public Records Act. If you are not the intended recipient, please contact the sender and destroy all copies of this message. -- This email has been scanned by the Sybari - Antigen Email System.

This inbound email has been scanned by the MessageLabs Email Security System.

Confidentiality Notice: This e-mail, including all attachments is for the sole use of the intended recipient (s) and may contain confidential and privileged information. Any unauthorized review, use, disclosure or distribution is prohibited unless specifically provided under the New Mexico Inspection of Public Records Act. If you are not the intended recipient, please contact the sender and destroy all copies of this message. -- This email has been scanned by the Sybari - Antigen Email System.

This inbound email has been scanned by the MessageLabs Email Security System.

VonGonten, Glenn, EMNRD

From: HUDSON, MATTHEW [MHudson@chevron.com]
Sent: Friday, February 01, 2008 1:14 PM
To: VonGonten, Glenn, EMNRD
Cc: Briggs, Jene'e M
Subject: Re:

Glenn,

We're finalizing the Eunice South permit renewal, and should have that to you next week. On Eunice North, it appears we have not done the public notice yet, but we're working on that as we speak. On the Buckeye report, I'll find that out and get back to you. We discussed it at our meeting, but I don't recall the reference number. I'm traveling today, but I'll get back to you when I'm back in the office.

Thanks,
Matt

Sent from the handheld of Matt Hudson

----- Original Message -----

From: VonGonten, Glenn, EMNRD <Glenn.VonGonten@state.nm.us>
To: HUDSON, MATTHEW
Sent: Fri Feb 01 11:35:46 2008
Subject:

Matt,

What is the status on the submittal of the discharge permit renewal for the South Eunice GP? Also, what did you find out about the public notice for the North Eunice GP? Also, also, I have a ground water monitoring report for the Buckeye Vacuum Field Unit from Secor, but I can't determine what OCD Case Number has been assigned to this site. Did we talk about this at our meeting last year?

Glenn

Confidentiality Notice: This e-mail, including all attachments is for the sole use of the intended recipient(s) and may contain confidential and privileged information. Any unauthorized review, use, disclosure or distribution is prohibited unless specifically provided under the New Mexico Inspection of Public Records Act. If you are not the intended recipient, please contact the sender and destroy all copies of this message. -- This email has been scanned by the Sybari - Antigen Email System.

This inbound email has been scanned by the MessageLabs Email Security System.

2/29/2008

VonGonten, Glenn, EMNRD

From: VonGonten, Glenn, EMNRD

Sent: Friday, February 01, 2008 10:36 AM

To: HUDSON, MATTHEW

Matt,

What is the status on the submittal of the discharge permit renewal for the South Eunice GP? Also, what did you find out about the public notice for the North Eunice GP? Also, also, I have a ground water monitoring report for the Buckeye Vacuum Field Unit from Secor, but I can't determine what OCD Case Number has been assigned to this site. Did we talk about this at our meeting last year?

Glenn

2/29/2008

VonGonten, Glenn, EMNRD

From: Price, Wayne, EMNRD
Sent: Wednesday, July 20, 2005 4:29 PM
To: Toner, Scott L (SToner)
Cc: Gary Miller; Ronnie Kallus; Jeremy Rasmussen; Williams, Chris, EMNRD; VonGonten, Glenn, EMNRD
Subject: RE: Eunice South Gas Plant Remediation

Thanks for the up-date

Wayne Price-Senior Environmental Engr.
Oil Conservation Division
1220 S. Saint Francis
Santa Fe, NM 87505
E-mail wayne.price@state.nm.us
Tele: 505-476-3487
Fax: 505-4763462

From: Toner, Scott L (SToner) [mailto:SToner@chevron.com]
Sent: Wed 7/20/2005 11:50 AM
To: Price, Wayne, EMNRD
Cc: Gary Miller; Ronnie Kallus; Jeremy Rasmussen; Williams, Chris, EMNRD
Subject: Eunice South Gas Plant Remediation

I sent you the attached e-mail notice following the fire at our remediation tank battery at the Eunice North Gas Plant near Eunice, New Mexico.

<<Eunice South Gas Plant Remediation Project>>

I wanted to update you on the status of our clean up work and returning the remediation system to operation.

First, the remediation systems were all returned to service around the end of June. Temporary measures were implemented at that time to continue with the regular operation and maintenance of the remediation system. Currently, the chloride recovery wells are sending water directly to the on-site injection well. Also, a temporary tank has been brought out to the site to collect hydrocarbons recovered from the ground water, and a berm has been placed around this temporary tank.

In addition, the equipment destroyed by the fire has been removed from the site.

Work that remains to be completed includes remediation of the hydrocarbon impacted soil as specified in the June 2nd work plan submitted to you and approved on June 29th. We are also moving ahead with building a replacement tank battery. This remaining work is currently being organized.

If you have any questions, please give me a call at (281) 561-3653.

2/29/2008