



Remediation Plan

@

Trunk MB-1

Project # 2008-008

Unit ltr."P" Section 16 Twns. 25S Range 37E

Lea County, New Mexico

Site Remediation Plan

Southern Union Gas Services
Trunk MB-1
2008-008

Unit ltr. P Section 16, Twns. 25S, Range 37E

Waste Management and Remediation Specialist

Signature Tony Savoie

Date: 4/28/08

Tony Savoie
P.O. Box 1226
Jal, New Mexico 88252
575-631-9376
E-mail: tony.savoie@sug.com

District I
1625 N. French Dr., Hobbs, NM 88240
District II
1301 W. Grand Avenue, Artesia, NM 88210
District III
1000 Rio Brazos Road, Aztec, NM 87410
District IV
1220 S. St. Francis Dr., Santa Fe, NM 87505

State of New Mexico
Energy Minerals and Natural Resources

Oil Conservation Division
1220 South St. Francis Dr.
Santa Fe, NM 87505

Form C-141
Revised October 10, 2003

Submit 2 Copies to appropriate
District Office in accordance
with Rule 116 on back
side of form

Release Notification and Corrective Action

OPERATOR

☒ Initial Report ☐ Final Report

| | | | |
|-----------------|-----------------------------------|---------------|-----------------------|
| Name of Company | Southern Union Gas Services, Ltd. | Contact | Tony Savoie |
| Address | P.O. Box 1226 Jal, N.M. 88252 | Telephone No. | 575-395-2116 |
| Facility Name | Lea County Field Dept. | Facility Type | Natural Gas Gathering |

| | | |
|------------------------------------|------------------------------------|-----------|
| Surface Owner: State of New Mexico | Mineral Owner: State of New Mexico | Lease No. |
|------------------------------------|------------------------------------|-----------|

LOCATION OF RELEASE

| | | | | | | | | |
|------------------|---------------|-----------------|--------------|---------------|------------------|---------------|----------------|---------------|
| Unit Letter P | Section 16 | Township 25S | Range 37E | Feet from the | North/South Line | Feet from the | East/West Line | County Lea |
|------------------|---------------|-----------------|--------------|---------------|------------------|---------------|----------------|---------------|

Latitude N32 07.526 Longitude W103 09.695

NATURE OF RELEASE

WTR 70'

| | | |
|--|---|---|
| Type of Release : Natural Gas and Crude Oil | Volume of Release: 10 bbls crude oil 40,000 MCF Gas | Volume Recovered 3 1/2 Bbls |
| Source of Release : 8" Natural Gas Pipeline | Date and Hour of Occurrence approximately 3:00 p.m. 4/17/08 | Date and Hour of Discovery 4/18/08 Time: 10:40 a.m. |
| Was Immediate Notice Given? <input type="checkbox"/> Yes <input type="checkbox"/> No <input checked="" type="checkbox"/> Not Required | If YES, To Whom? The leak was discovered by NMOCD field inspector. | |
| By Whom? | Date and Hour: | |
| Was a Watercourse Reached? <input type="checkbox"/> Yes <input checked="" type="checkbox"/> No | If YES, Volume Impacting the Watercourse. | |

If a Watercourse was Impacted, Describe Fully.*

Describe Cause of Problem and Remedial Action Taken.*

A 8" Natural Gas gathering line operating at approximately 30 p.s.i. was damaged during a line repair on 4/17/08. The leak was discovered on 4/18/08. The damaged section of pipe was excavated and repaired. Approximately 3.5 bbls of oil was recovered during the repair activities.

Describe Area Affected and Cleanup Action Taken. An area measuring approximately 4000 sq. ft. was affected by the release and the backhoe activity. Final remediation will follow the NMOCD recommended guidelines for leaks and spills.

I hereby certify that the information given above is true and complete to the best of my knowledge and understand that pursuant to NMOCD rules and regulations all operators are required to report and/or file certain release notifications and perform corrective actions for releases which may endanger public health or the environment. The acceptance of a C-141 report by the NMOCD marked as "Final Report" does not relieve the operator of liability should their operations have failed to adequately investigate and remediate contamination that pose a threat to ground water, surface water, human health or the environment. In addition, NMOCD acceptance of a C-141 report does not relieve the operator of responsibility for compliance with any other federal, state, or local laws and/or regulations.

| | | | |
|-------------------------------------|--|--|-------------------------|
| Signature: <i>Tony Savoie</i> | | OIL CONSERVATION DIVISION | |
| Printed Name: John A. Savoie | | Approved by District Supervisor: <i>Johnson</i> | |
| Title: Remediation Supervisor | | Approval Date: 4.29.08 | Expiration Date: 7.1.08 |
| E-mail Address: tony.savoie@sug.com | | Conditions of Approval: | |
| Date: 4/28/08 Phone: 575-395-2116 | | Attached <input type="checkbox"/> SUBMIT FINAL C-141 BY 12P# 1848 | |

* Attach Additional Sheets If Necessary

FOHA 0812730237

Trunk MB-1

Job # 2008-008

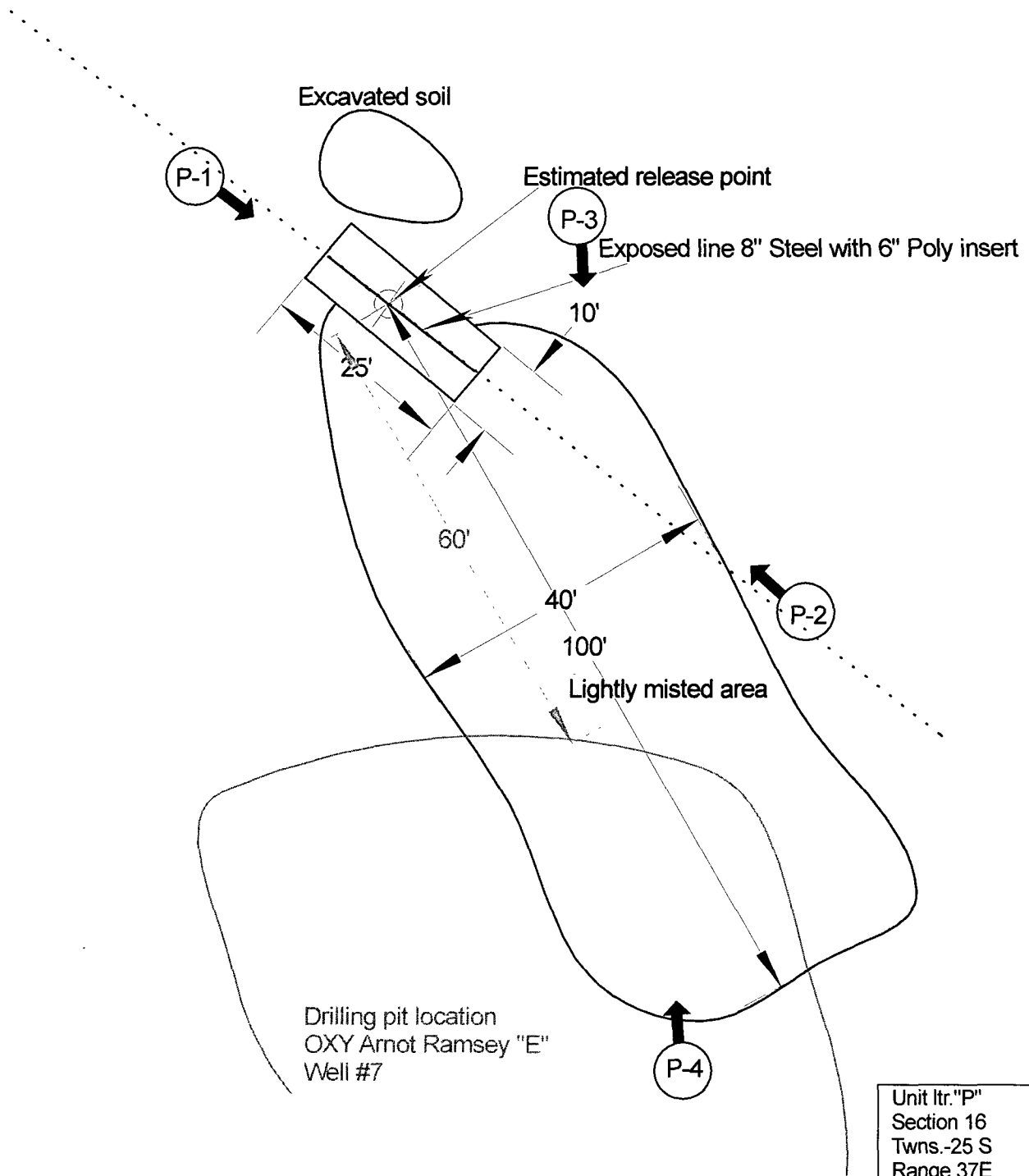
Ranking Analysis

| NMOCD Standards | | | Points |
|--------------------------------|--|--------------|------------|
| Depth to Ground Water | Greater than 100 ft. | | 0 |
| Depth to Ground Water | Less than 100 ft. but greater than 50 ft. | | 10 |
| Depth to Ground Water | Less than 50 ft. | | 20 |
| | | | |
| Well Head Protection | Less than 1000 ft. from a water source, or; | Yes | 20 |
| | Less than 200 ft. from private domestic water source | No | 0 |
| | | | |
| Distance to Surface water body | Less than 200 Horizontal. ft. | | 20 |
| Distance to Surface water body | 200 to 1000 Horizontal ft. | | 10 |
| Distance to Surface water body | Greater than 1000 Horizontal ft. | | 0 |
| | | | |
| Action levels | >19 | 10-19 | 0-9 |
| Benzene (mg/kg) | 10 | 10 | 10 |
| BTEX (mg/kg) | 50 | 50 | 50 |
| TPH (mg/kg) | 100 | 1000 | 5000 |

| Site Ranking | | | Points |
|------------------------------|---------------------|--|-----------|
| Depth to Ground Water "Avg." | 50 ft. Average | | 20 |
| Well Head Protection | 3820 Horizontal Ft. | | 0 |
| Surface Water Body | 4425 Horizontal Ft. | | 0 |
| Total Ranking Score | | | 20 |

| Site Closure Objective | |
|------------------------|-----|
| Benzene (mg/kg) | 10 |
| BTEX (mg/kg) | 50 |
| TPH (mg/kg) "Surface" | 100 |

| Remediation Plan: |
|---|
| All affected soil will be excavated and sampled for the presence of Hydrocarbons EPA method (8015M) |
| Soil with TPH values greater than 100 mg/kg will be transported to the S.U.G.S. Landfarm or remediated on-site. |
| Soil samples will be collected from the excavation and analyzed for Hydrocarbons EPA method (8015M) |
| All samples will be field screened with a "PID" The soil sample with the highest PID reading will be analyzed separately and tested for BTEX. |



Approximate
Scale 1"= 20'



Unit ltr. "P"
Section 16
Twns.-25 S
Range 37E
County-Lea, N.M.
GPS
Lat- 32-07.526N
Long-103-09.695W

Southern Union
Gas Services

Site Plan-Trunk MB-1 Lea County Area Jal, N.M.

2008-008

Figure 1



Photo 1

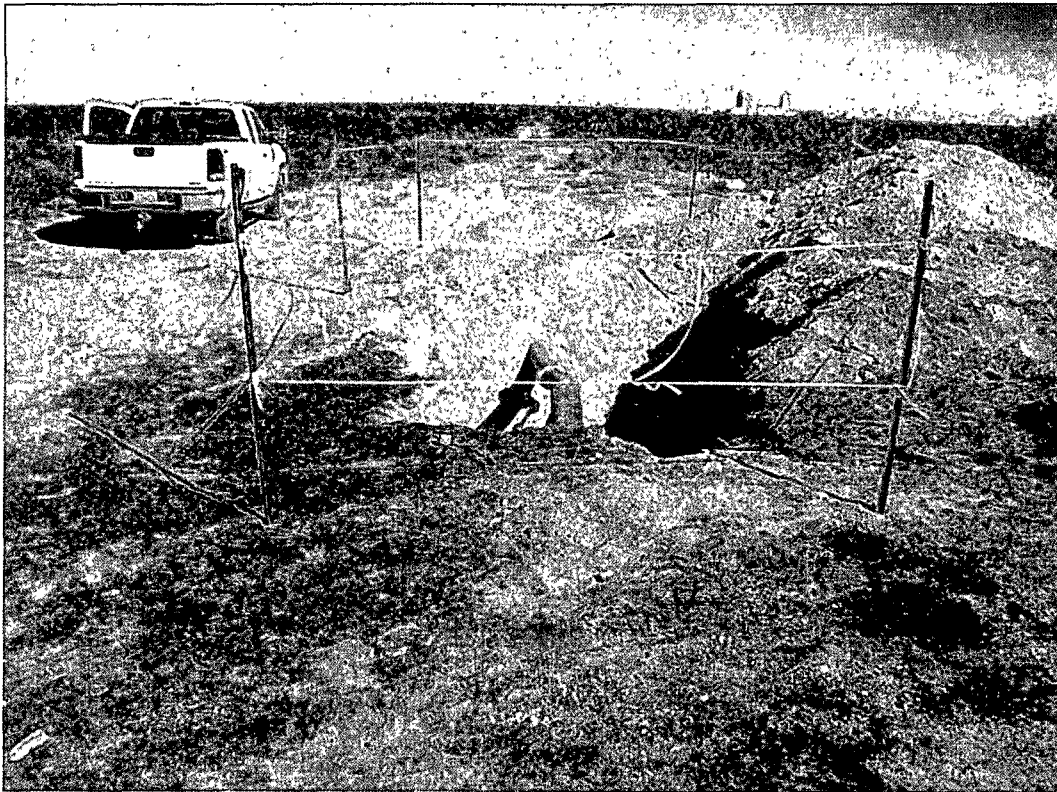


Photo 2

Southern Union Gas Services Site: Trunk MB-1

Job # 2008-008

Site Assessment 4/21/08



Photo 3



Photo 4

Southern Union Gas Services Site: Trunk MB-1
Job # 2008-008
Site Assessment 4/21/08