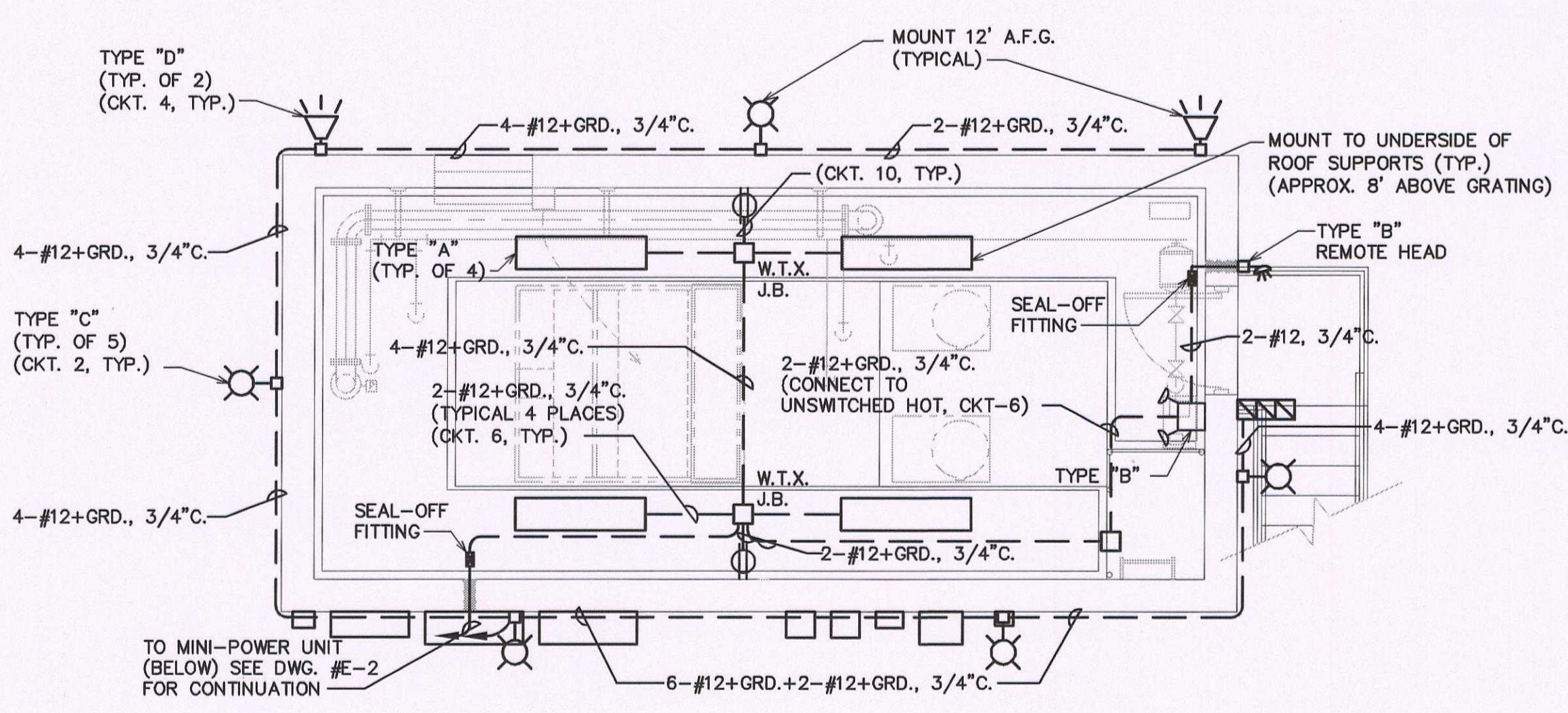
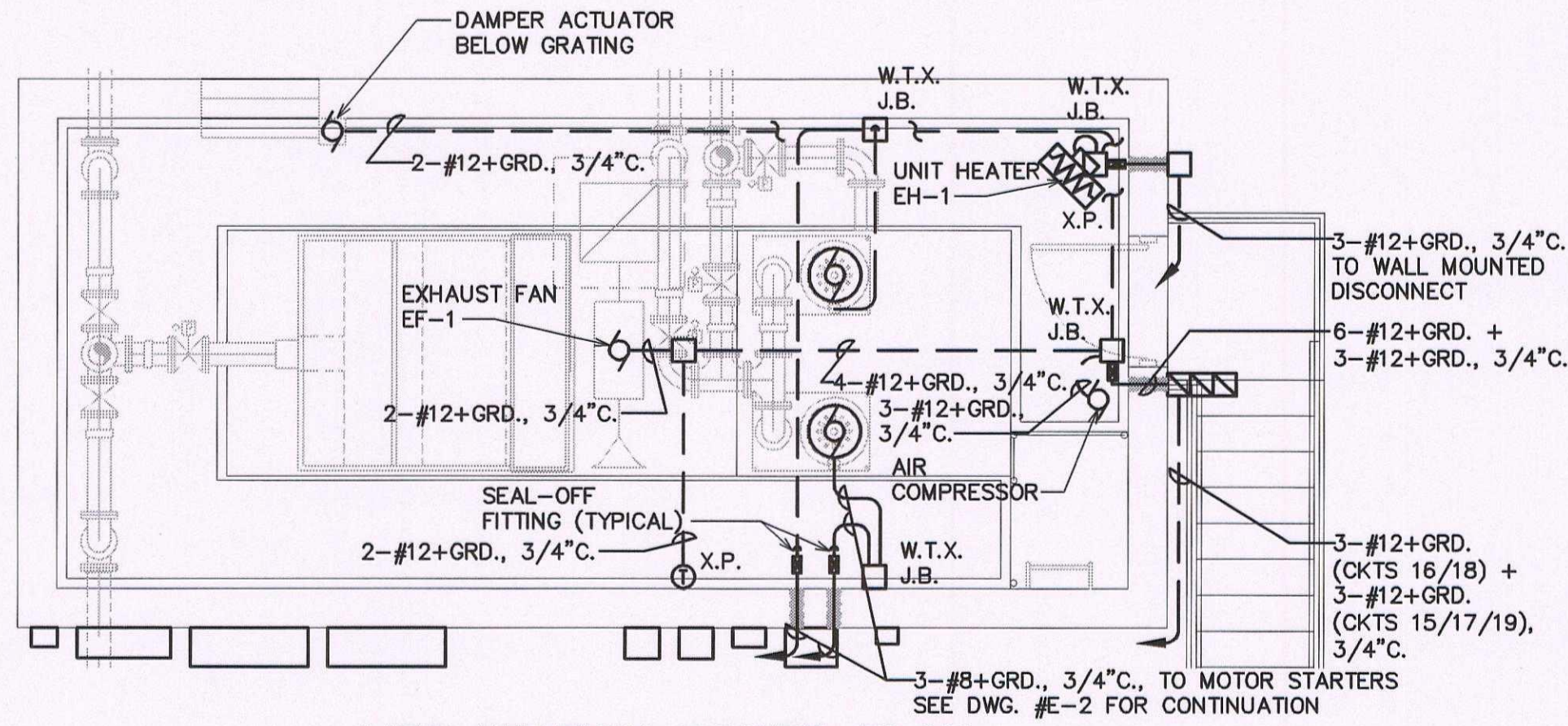


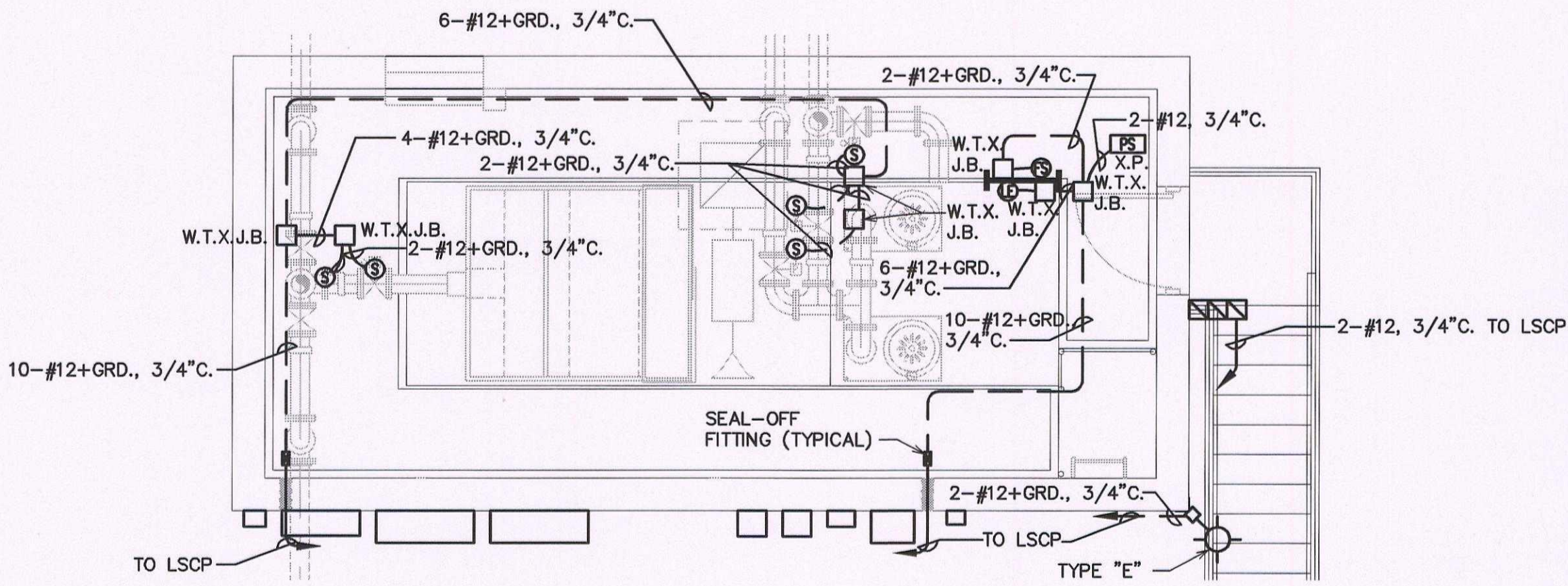
LIGHTING FIXTURE SCHEDULE				
TYPE	LAMP	OPERATING VOLTAGE	DESCRIPTION	MFR. CAT. NO.
"A"	2-32W. TB FLUORESCENT	120V.	PENDANT OR SURFACE MTD. IMPACT RESISTANCE POLYESTER FIBERGLASS HOUSING FLUORESCENT FIXTURE WITH 2 LAMP, H.P.F., CLASS P, NON-PCB, 120 V. BALLAST. FIXTURE SHALL HAVE STAINLESS STEEL HARDWARE & BE SUITABLE FOR WET CORROSIVE LOCATION. FIXTURE SHALL BE RATED CLASS I, DIV. 2	LITHONIA: "DIN" SERIES, DAYBRITE; "FIBERGLASS VAPORLUME" SERIES, COLUMBIA; "LUN" SERIES OR APPROVED EQUAL
"B"	(2) 25W. D.C. LAMPS PLUS (1) 25W. D.C. REMOTE HEAD	120V.	EXPLOSION PROOF EMERGENCY UNIT WITH 12V. BATTERY, ALUMINUM HOUSING, GLASS GLOBE, ANGLE REFLECTOR, PREMIUM GRADE, NICKEL CADMIUM MAINTENANCE FREE BATTERY, DESIGNED FOR FULLY AUTOMATIC OPERATION WITH 15 YEAR LIFE EXPECTANCY THERMALLY PROTECTED FOR 120V. OPERATION, WITH REMOTE HEAD FOR OUTDOOR INSTALLATION	DUAL-LITE: XPB SERIES; CHLORIDE: 1X SERIES; EMERG-LITE: EXC SERIES; OR APPROV. EQUAL
"C"	70W. METAL HALIDE HID	120V.	DIE CAST ALUMINUM WALL MOUNTED HID FIXTURE WITH AIMED DOWN SHARP CUT-OFF DISTRIBUTION, STAINLESS STEEL TAMPER-PROOF HARDWARE, GASKETED GLASS LENS, -20" F. HPF BALLAST & DARK BRONZE FINISH. EACH UNIT SHALL HAVE A BUTTON TYPE PHOTOCELL	G.E.: CRITERION SERIES, OR APPROVED EQUAL
"D"	250W. METAL HALIDE HID	120V.	DIE CAST ALUMINUM TRUNNION MOUNT FLOODLIGHT HID FIXTURE, WITH ALZAK REFLECTOR, STAINLESS STEEL TAMPER-PROOF HARDWARE, GASKETED GLASS LENS, WITH -20" F. HPF BALLAST & DARK BRONZE FINISH. EACH UNIT SHALL HAVE A PHOTOCELL	G.E.: PF-154 POWERFLOOD SERIES, OR APPROVED EQUAL
"E"	10,000 HOUR STROBE	120V.	STROBE TYPE WARNING LIGHT WITH RED LENS, AND DOME GUARD, WITH CORNER MOUNTING BRACKET	FEDERAL SIGNAL: MODEL 151XST WITH MODEL LCM2 CORNER BRACKET



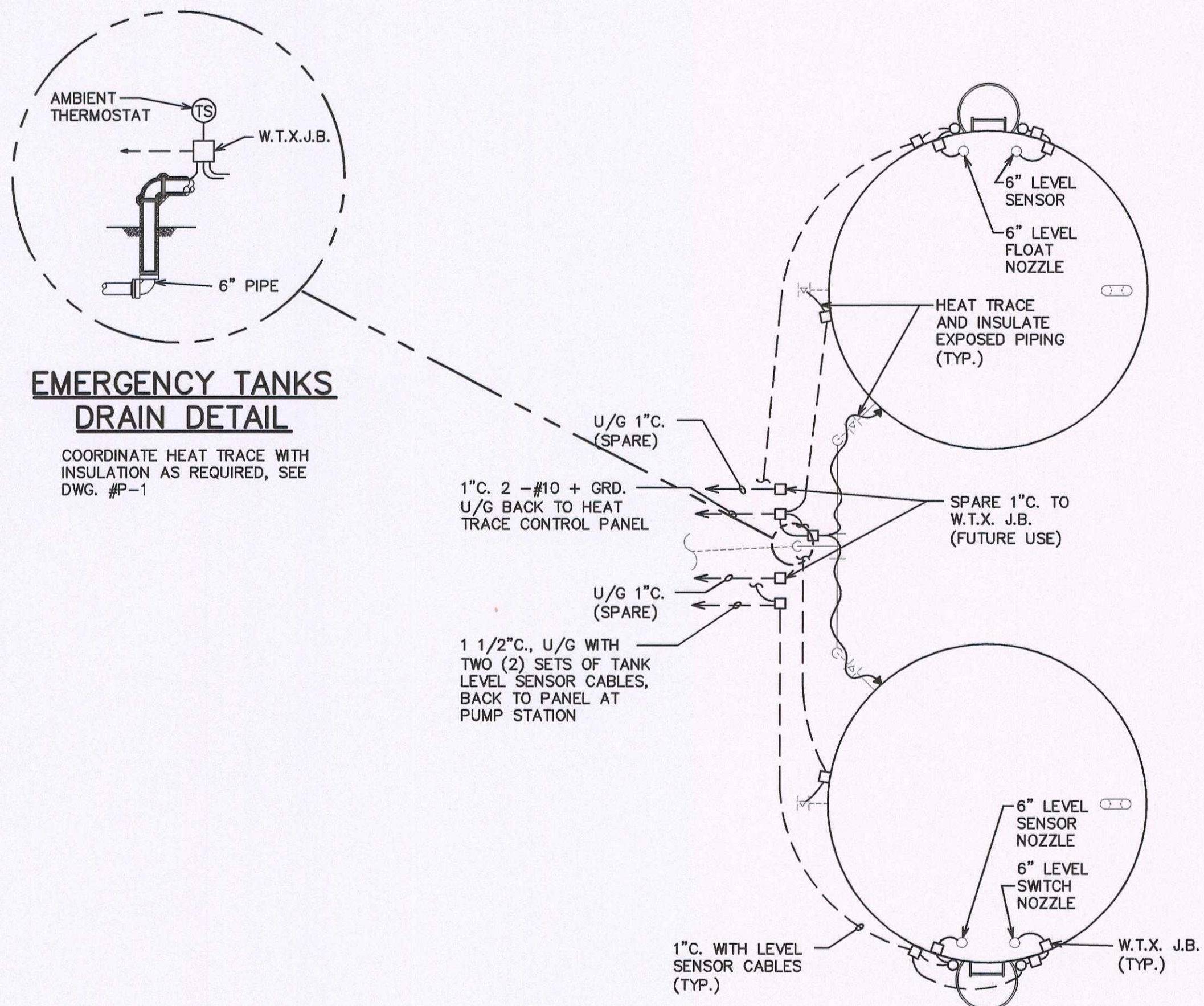
LIFT STATION LIGHTING AND RECEPTACLE PLAN



LIFT STATION POWER PLAN



LIFT STATION INSTRUMENTATION PLAN



EMERGENCY TANKS DRAIN DETAIL

COORDINATE HEAT TRACE WITH INSULATION AS REQUIRED, SEE DWG. #P-1

EMERGENCY TANKS ENLARGED PLAN

HEAT TRACE NOTES:

1. HEAT TRACE CONTROL PANEL & SYSTEM SHALL BE AS OFFERED BY RAYCHEM OR NELSON.
2. HEAT TRACE SYSTEM SHALL BE DESIGNED BY SUPPLIER TO MAINTAIN A 40° PIPE TEMPERATURE AT THE EXPECTED MINIMUM LOCAL AMBIENT LOW TEMPERATURE OF MINUS 30°.
3. INSTALLING CONTRACTOR SHALL WRAP, OR PROVIDE MULTIPLE LENGTHS, PIPE PER SUPPLIER'S DESIGN.
4. HEAT TRACE CABLE INSTALLATION SHALL BE COORDINATED WITH WEATHERPROOF INSULATION PER DWG. #P-1.

Western Refining

HRC

HUBBELL, ROTH & CLARK, INC.
Consulting Engineers

555 HULEY DRIVE
BLOOMFIELD HILLS, MICH. P.O. BOX 824
48303 - 0824

PHONE: (248) 454-6300
FAX (1st Floor): (248) 454-6312
FAX (2nd Floor): (248) 338-2592
WEB SITE: <http://www.hrc-engr.com>

06-18-08	NMOC
05-28-08	OWNER REVIEW
DATE	ADDITIONS AND/OR REVISIONS
DESIGNED	K.L.C.
DRAWN	T.W.H.
CHECKED	K.L.C.
APPROVED	M.A.O.



WESTERN REFINING - GALLUP

SANITARY WASTEWATER LIFT STATION

JAMESTOWN NEW MEXICO 87347

LIFT STATION POWER AND LIGHTING PLANS

HRC JOB NO. 20070465	SCALE AS NOTED
DATE JANUARY 2008	SHEET NO. E-3

GW - 32

Maps