

NSL 4/29/97

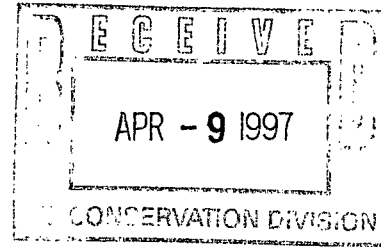
# BURLINGTON RESOURCES

SAN JUAN DIVISION

April 7, 1997

Sent Federal Express

Mr. William LeMay  
New Mexico Oil Conservation Division  
2040 South Pacheco  
Santa Fe, New Mexico 87505



Re: San Juan 28-5 Unit #72M  
1590'FNL, 1140'FWL Section 35, T-28-N, R-5-W, Rio Arriba County, New Mexico  
API # 30-039-25621

Dear Mr. LeMay:

Burlington Resources is applying for administrative approval of a non-standard location for the above location in the Dakota formation. This well is proposed as a Mesa Verde/Dakota new drill. The acreage proposed for each formation is different as shown on the C102 Well Location and Acreage Dedication Plat. This difference makes it impossible for a standard location for both formations. Order R-2948 covers the non-standard proration unit for this well.

The following attachments are for your review:

1. Application for Permit to Drill.
2. Completed C-102 at referenced location.
3. Offset operators/owners plat - Burlington is the offset operator
4. 7.5 minute topographic map showing the orthodox windows, and enlargement of the map to define topographic features.

We appreciate your earliest consideration of this application.

Sincerely,

  
Peggy Bradfield  
Regulatory/Compliance Representative

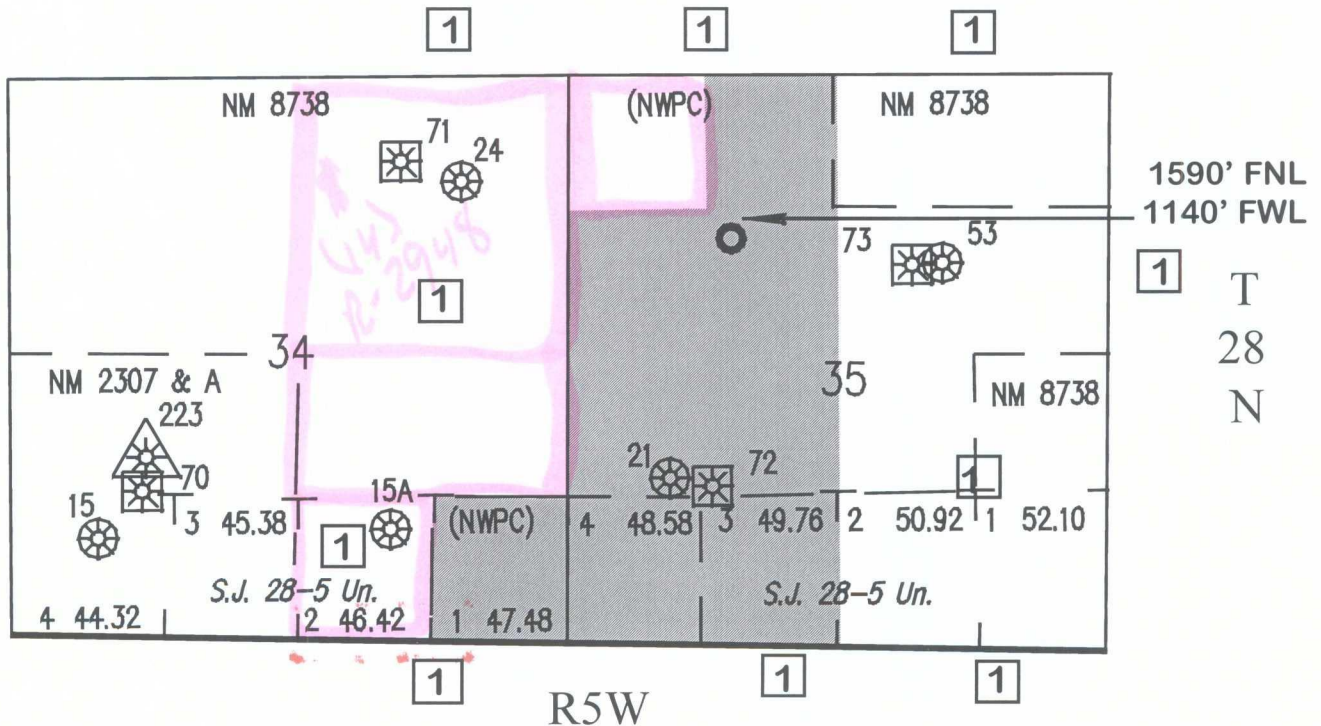
See NSL-2PLS. 28

# Burlington Resources Oil and Gas Company

## *San Juan 28-5 Unit #72M Offset Operator / Owner Plat Nonstandard Location*

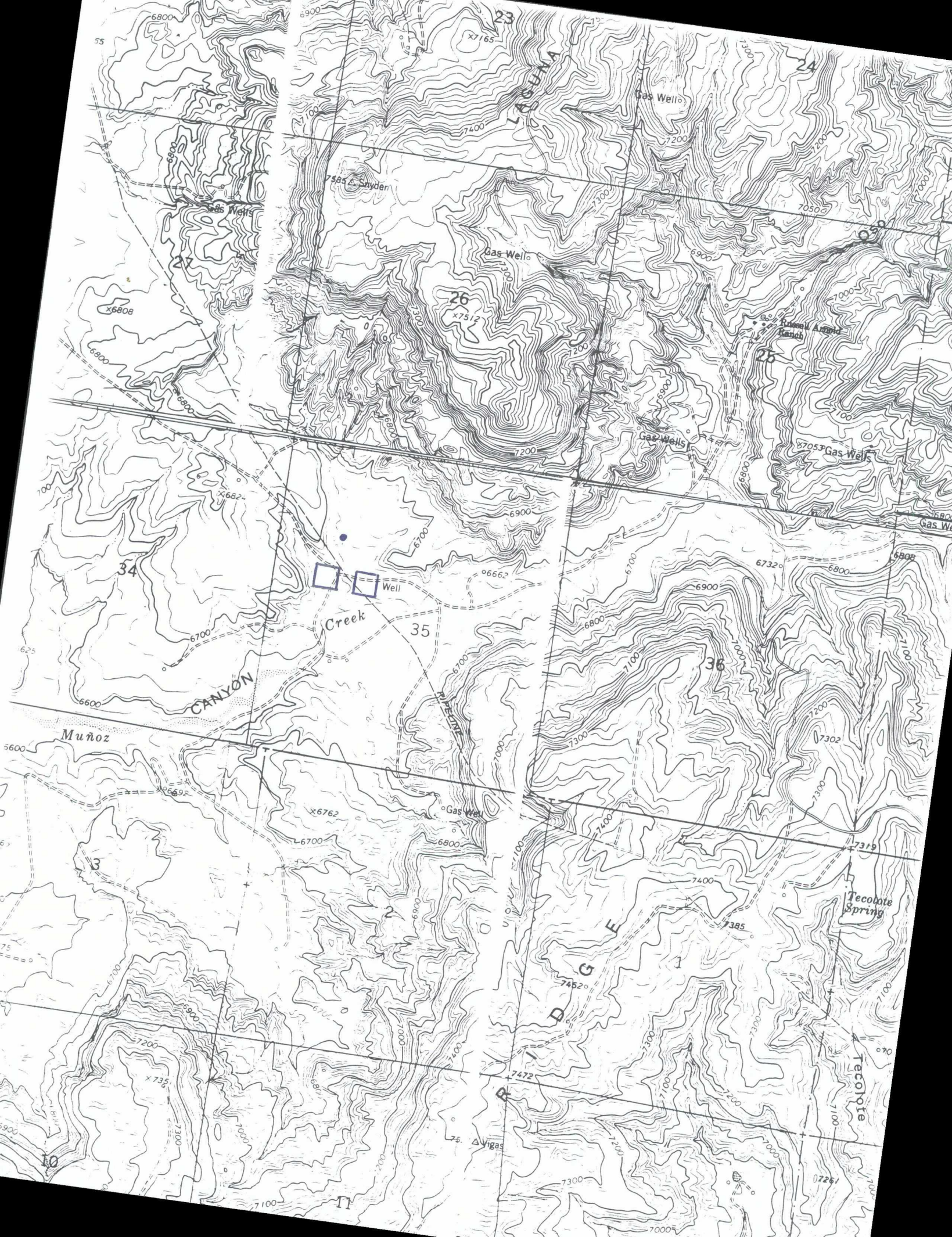
Dakota (Non standard Dedication)  
(covering lot 1, Sec. 34 &  
lots 3,4, N/2 SW/4, S/2 NW/4,  
NE/4 NW/4 Sec. 35)

Dakota Formation Well  
Township 28 North, Range 5 West  
1590' FNL, 1140' FWL Section 35

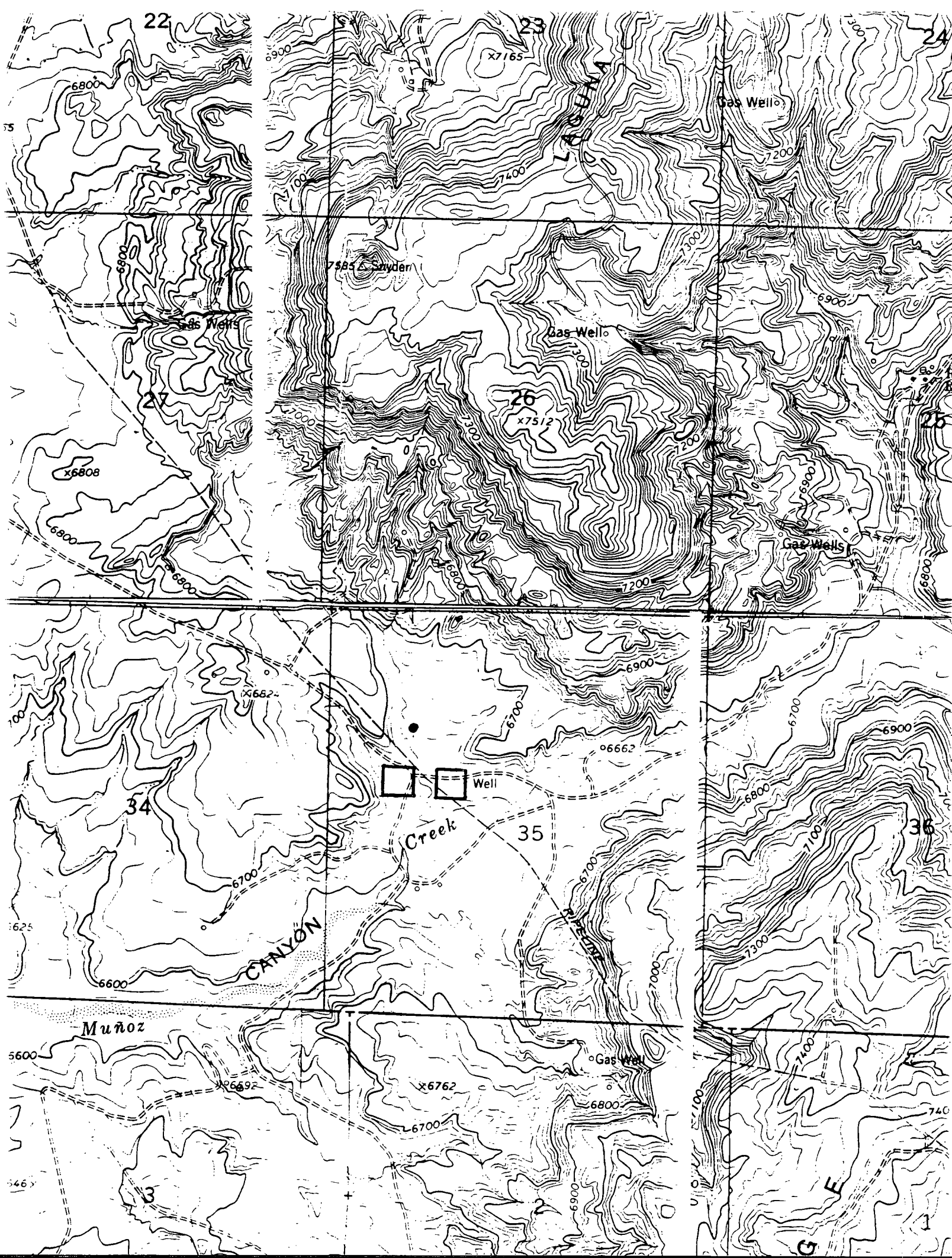


1) Burlington Resources Oil and Gas Company









District I  
PO Box 1980, Hobbs, NM 88241-1980  
District II  
PO Drawer 00, Artesia, NM 88211-0719  
District III  
1000 Rio Brazos Rd., Aztec, NM 87410  
District IV  
PO Box 2088, Santa Fe, NM 87504-2088

State of New Mexico  
Energy, Mineral & Natural Resources Department

OIL CONSERVATION DIVISION  
PO Box 2088  
Santa Fe, NM 87504-2088

RECEIVED  
JAN 16 1997

Form C-101

Revised February 21, 1994

Instructions on back

Submit to Appropriate District Office

State Lease - 6 Copies

Fee Lease - 5 Copies

☐ AMENDED REPORT

APPLICATION FOR PERMIT TO DRILL, RE-ENTER, DEEPEN, PLUGBACK, OR ADD A ZONE

Operator Name and Address: BURLINGTON RESOURCES OIL & GAS COMPANY PO Box 4289 Farmington, NM 87499		OGRID Number 14538
Property Code 7460	Property Name San Juan 28-5 Unit	API Number 30-0 39-25621
		Well No. 72M

7 Surface Location

UL or lot no.	Section	Township	Range	Lot Ida	Feet from the	North/South line	Feet from the	East/West line	County
E	35	28N	5W		1590	North	1140	West	RA

8 Proposed Bottom Hole Location If Different From Surface

UL or lot no.	Section	Township	Range	Lot Ida	Feet from the	North/South line	Feet from the	East/West line	County

N/320 Blanco Mesaverde - 72319	Proposed Pool 1	W/345.80 Basin Dakota - 71599	Proposed Pool 2
-----------------------------------	-----------------	----------------------------------	-----------------

Work Type Code N	Well Type Code M	Cable/Rotary R	Lease Type Code P	Ground Level Elevation 6644 GR
Multiple Yes	Proposed Depth 7911'	Formation Mesaverde/Dakota	Contractor Not determined	Spud Date 1st qtr 1997

21 Proposed Casing and Cement Program

Well Size	Casing size	Casing weight/foot	Setting Depth	Sacks of Cement	Estimated TOC
12 1/4	9 5/8	36#	200	188 cu.ft.	Surface
8 3/4	7	23#	3646	959 cu.ft.	Surface
6 1/4	4 1/2	10.5&11.6#	7911	606 cu.ft.	3546'

Describe the proposed program. If this application is to DEEPEN or PLUG BACK give the data on the present productive zone and proposed new productive zone. Describe the blowout prevention program, if any. Use additional sheets if necessary.

Note: To facilitate higher hydraulic stimulation completion work, no liner hanger will be used. In its place, a long string of 4 1/2" casing will be run and cemented with a minimum of 100' of cement overlap between the 4 1/2" x 7" casing strings. After completion of the well, a 4 1/2" retrievable bridge plug will be set below the top of cement in the 4 1/2" x 7" overlap. The 4 1/2" casing will then be backed off above the top of cement in the 4 1/2" x 7" overlap and laid down. The liner top can then be pressure tested to ensure a seal between the liner top and the 7" casing has been achieved. The test pressure shall be the maximum anticipated pressure to which the seal will be exposed (700 psi for the Mesa Verde and 2500 psi for the Dakota). The 4 1/2" bridge plug will then be retrieved and the production tubing will be run to produce the well.

11" 2000 psi minimum double gate BOP

I hereby certify that the information given above is true and complete to the best of my knowledge and belief.

Signature:

Printed name:

Peggy Bradfield

Title:

Regulatory Administrator

Date:

1-15-97

Phone:

(505) 326-9700

OIL CONSERVATION DIVISION

Approved by:

Ernie Busch

Title:

DEPUTY OIL & GAS INSPECTOR, DIST. #3

Approval Date:

JAN 16 1997

Expiration Date:

JAN 10 1997

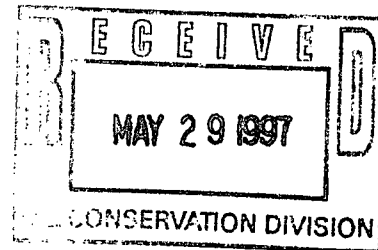
Conditions of Approval:

Hot & cold flow test

Attached ☐

# BURLINGTON RESOURCES

SAN JUAN DIVISION



May 23, 1997

Sent Federal Express

Mr. William LeMay  
New Mexico Oil Conservation Division  
2040 South Pacheco  
Santa Fe, New Mexico 87505

Re: San Juan 28-5 Unit #72M  
1590'FNL, 1140'FWL, Section 35, T-28-N, R-5-W, Rio Arriba County, New Mexico  
API # 30-039-25621

Dear Mr. LeMay:

Burlington Resources would like to clarify our application for administrative approval of a non-standard location for the above location in the Dakota formation. The two specific questions are: 1. What makes this location unorthodox and, 2. Why is it impossible.

The Dakota location will be unorthodox because when Burlington drills the well as a Mesaverde/Dakota, the Mesaverde formation will stay within a standard window. This location will prevent drainage from occurring from other wells in the area. Unfortunately, because Order R-2849 causes the NW/NW quarter of Section 35 not to be included with the Dakota proration unit, this location is now only 120' from the lease line. This now makes the Dakota zone a non-standard location. Moving the location South to comply would cause the Mesaverde location to become non-standard and jeopardize the well to interfere from existing Mesaverde production located in the Southwest quarter and Northeast quarter of Section 35. The Mesaverde has a North half dedication. The Dakota has a West half dedication.

We appreciate your earliest consideration of this application.

Sincerely,

*Nancy Oltmanns*  
Nancy Oltmanns  
Regulatory Associate

# BURLINGTON RESOURCES

SAN JUAN DIVISION

April 7, 1997

Sent Federal Express

Mr. William LeMay  
New Mexico Oil Conservation Division  
2040 South Pacheco  
Santa Fe, New Mexico 87505

Re: San Juan 28-5 Unit #72M  
1590' FNL, 1140' FWL Section 35, T-28-N, R-5-W, Rio Arriba County, New Mexico  
API # 30-039-25621

Dear Mr. LeMay:

Burlington Resources is applying for administrative approval of a non-standard location for the above location in the Dakota formation. This well is proposed as a Mesa Verde/Dakota new drill. The acreage proposed for each formation is different as shown on the C102 Well Location and Acreage Dedication Plat. This difference makes it impossible for a standard location for both formations. Order R-2948 covers the non-standard proration unit for this well.

The following attachments are for your review:

1. Application for Permit to Drill.
2. Completed C-102 at referenced location.
3. Offset operators/owners plat - Burlington is the offset operator
4. 7.5 minute topographic map showing the orthodox windows, and enlargement of the map to define topographic features.

We appreciate your earliest consideration of this application.

Sincerely,

  
Peggy Bradfield  
Regulatory/Compliance Representative

5-19-97  
(2) Why is it impossible?  
Please explain.  
M. Stoy  
N) What makes it unorthodox?

District I  
PO Box 1980, Hobbs, NM 88241-1980  
District II  
PO Drawer DD, Artesia, NM 88211-0719  
District III  
1000 Rio Brazos Rd., Aztec, NM 87410  
District IV  
PO Box 2088, Santa Fe, NM 87504-2088

State of New Mexico  
Energy, Minerals & Natural Resources Department

RECEIVED  
JAN 16 1997

Form C-101  
Revised February 21, 1994  
Instructions on back  
Submit to Appropriate District Office  
State Lease - 6 Copies  
Fee Lease - 5 Copies

OIL CONSERVATION DIVISION  
PO Box 2088  
Santa Fe, NM 87504-2088

☐ AMENDED REPORT

APPLICATION FOR PERMIT TO DRILL, RE-ENTER, DEEPEN, PLUGBACK, OR ADD A ZONE

Operator Name and Address: BURLINGTON RESOURCES OIL & GAS COMPANY PO Box 4289 Farmington, NM 87499		OGRID Number 14538
Property Code 7460	Property Name San Juan 28-5 Unit	API Number 30-0 39-25621
		Well No. 72M

7 Surface Location

UL or lot no.	Section	Township	Range	Lot Ida	Feet from the	North/South line	Feet from the	East/West line	County
E	35	28N	5W		1590	North	1140	West	2A

8 Proposed Bottom Hole Location if Different From Surface

UL or lot no.	Section	Township	Range	Lot Ida	Feet from the	North/South line	Feet from the	East/West line	County
N/320									
Blanco Mesaverde - 72319					W/345.80 Basin Dakota - 71599				

Work Type Code	Well Type Code	Cable/Rotary	Lease Type Code	Ground Level Elevation
N	M	R	P	6644 GR
Mudlogging	Proposed Depth	Formation	Contractor	Spud Date
Yes	7911'	Mesaverde/Dakota Not determined	1st qtr 199	

21 Proposed Casing and Cement Program

Hole Size	Casing size	Casing weight/foot	Setting Depth	Sacks of Cement	Estimated TOC
12 1/4	9 5/8	36#	200	188 cu.ft.	Surface
8 3/4	7	23#	3646	959 cu.ft.	Surface
6 1/4	4 1/2	10.5&11.6#	7911	606 cu.ft.	3546'

22 Describe the proposed program. If this application is to DEEPEN or PLUG BACK give the data on the previous productive zone and proposed new productive zone. Describe the blowout prevention program if any. Use additional sheets if necessary.

Note: To facilitate higher hydraulic stimulation completion work, no liner hanger will be used. In its place, a long string of 4 1/2" casing will be run and cemented with a minimum of 100' of cement overlap between the 4 1/2" x 7" casing strings. After completion of the well, a 4 1/2" retrievable bridge plug will be set below the top of cement in the 4 1/2" x 7" overlap. The 4 1/2" casing will then be backed off above the top of cement in the 4 1/2" x 7" overlap and laid down. The liner top can then be pressure tested to ensure a seal between the liner top and the 7" casing has been achieved. The test pressure shall be the maximum anticipated pressure to which the seal will be exposed (700 psi for the Mesa Verde and 2500 psi for the Dakota). The 4 1/2" bridge plug will then be retrieved and the production tubing will be run to produce the well.

11" 2000 psi minimum double gate BOP

23 I hereby certify that the information given above is true and complete to the best of my knowledge and belief.

Signature: *Peggy Bradfield*  
Printed name: Peggy Bradfield  
Title: Regulatory Administrator  
Date: 1-15-97  
Phone: (505) 326-9700

OIL CONSERVATION DIVISION

Approved by: *Ernie Busch*  
Title: DEPUTY OIL & GAS INSPECTOR, DIST. #3

Approval Date: JAN 16 1997  
Expiration Date: JAN 10  
Conditions of Approval: Hold copy for well  
Attached ☐



District I  
 PO Box 1988, Hobbs, NM 88241-1988  
 District II  
 PO Drawer DD, Artesia, NM 88211-0719  
 District III  
 1000 N. Hume Rd., Aztec, NM 87410  
 District IV  
 PO Box 2088, Santa Fe, NM 87504-2088

State of New Mexico  
 Energy, Minerals & Natural Resources Department

OIL CONSERVATION DIVISION  
 PO Box 2088  
 Santa Fe, NM 87504-2088

Form C-102  
 Revised February 21, 1994  
 Instructions on back  
 Submit to Appropriate District Office  
 State Lease - 4 Copies  
 Fee Lease - 3 Copies

☐ AMENDED REPORT

WELL LOCATION AND ACREAGE DEDICATION PLAT

API Number 30-039-256.21		Pool Code 72319/71599	Pool Name Blanco Mesaverde/Basin Dakota
Property Code 7460	Property Name San Juan 28-5 Unit		Well Number 72M
GRID No. 14538	Operator Name BURLINGTON RESOURCES OIL & GAS COMPANY		Elevation 6644'

<sup>10</sup> Surface Location

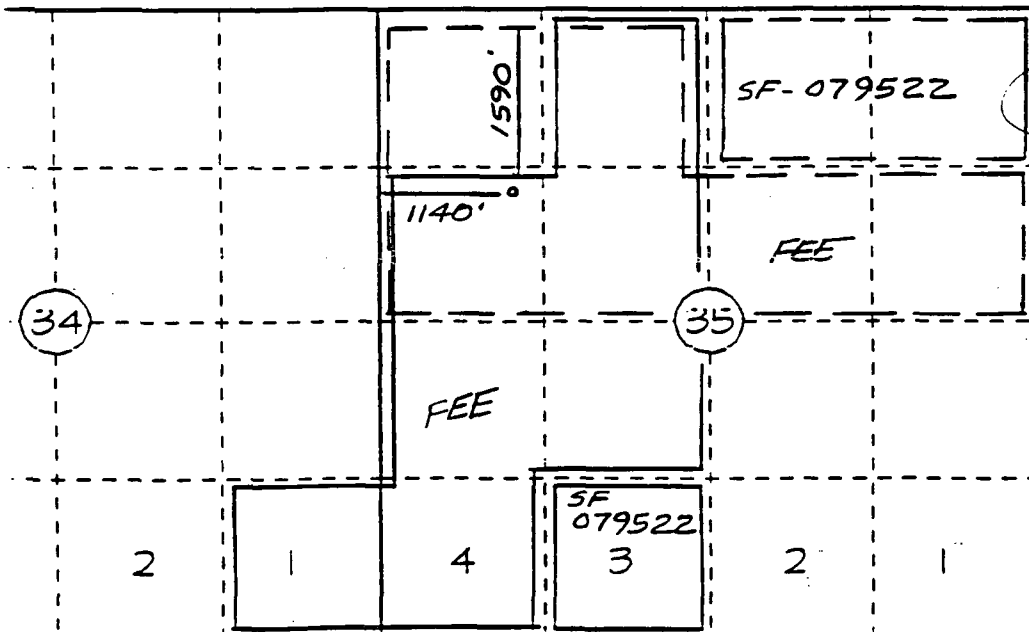
UL or lot no.	Section	Township	Range	Lot Ida	Feet from the	North/South line	Feet from the	East/West line	County
E	35	28-N	5-W		1590	North	1140	West	R.A.

<sup>11</sup> Bottom Hole Location If Different From Surface

UL or lot no.	Section	Township	Range	Lot Ida	Feet from the	North/South line	Feet from the	East/West line	County

<sup>12</sup> Dedicated Acres MV-N/320 DK-N/345	<sup>13</sup> Joint or Infill 82	<sup>14</sup> Consolidation Code	<sup>15</sup> Order No. NSL R-27148
---	-------------------------------------	----------------------------------	--

NO ALLOWABLE WILL BE ASSIGNED TO THIS COMPLETION UNTIL ALL INTERESTS HAVE BEEN CONSOLIDATED OR A NON-STANDARD UNIT HAS BEEN APPROVED BY THE DIVISION



<sup>17</sup> OPERATOR CERTIFICATION

I hereby certify that the information contained herein is true and complete to the best of my knowledge and belief

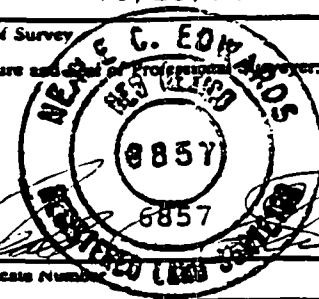
Signature: *Peggy Bradfield*  
 Printed Name: Peggy Bradfield  
 Title: Regulatory Administrator  
 Date: 1-15-97

<sup>18</sup> SURVEYOR CERTIFICATION

I hereby certify that the well location shown on this plat was plotted from field notes of actual surveys made by me or under my supervision, and that the same is true and correct to the best of my belief.

10/25/96

Date of Survey  
 Signature and Seal of Professional Surveyor:



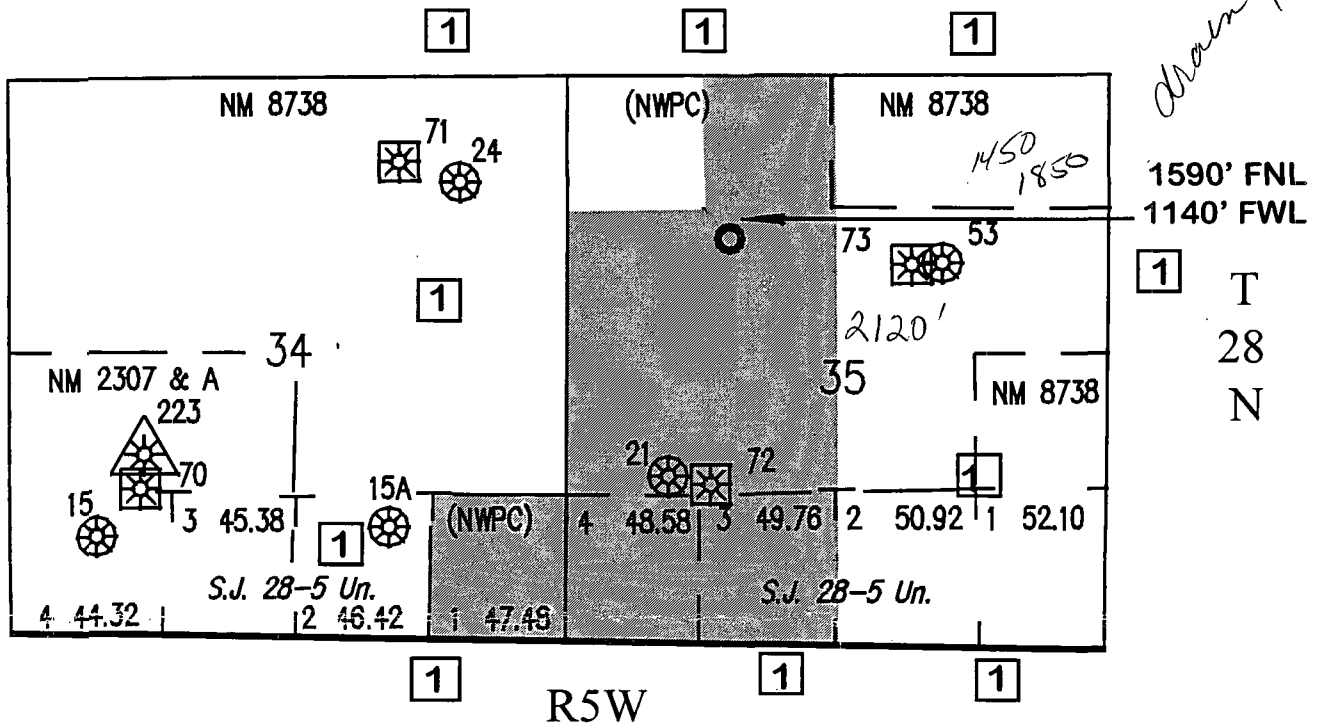
RECEIVED  
 JAN 13 1997  
 OIL CONSERVATION DIVISION  
 DISTRICT I

# Burlington Resources Oil and Gas Company

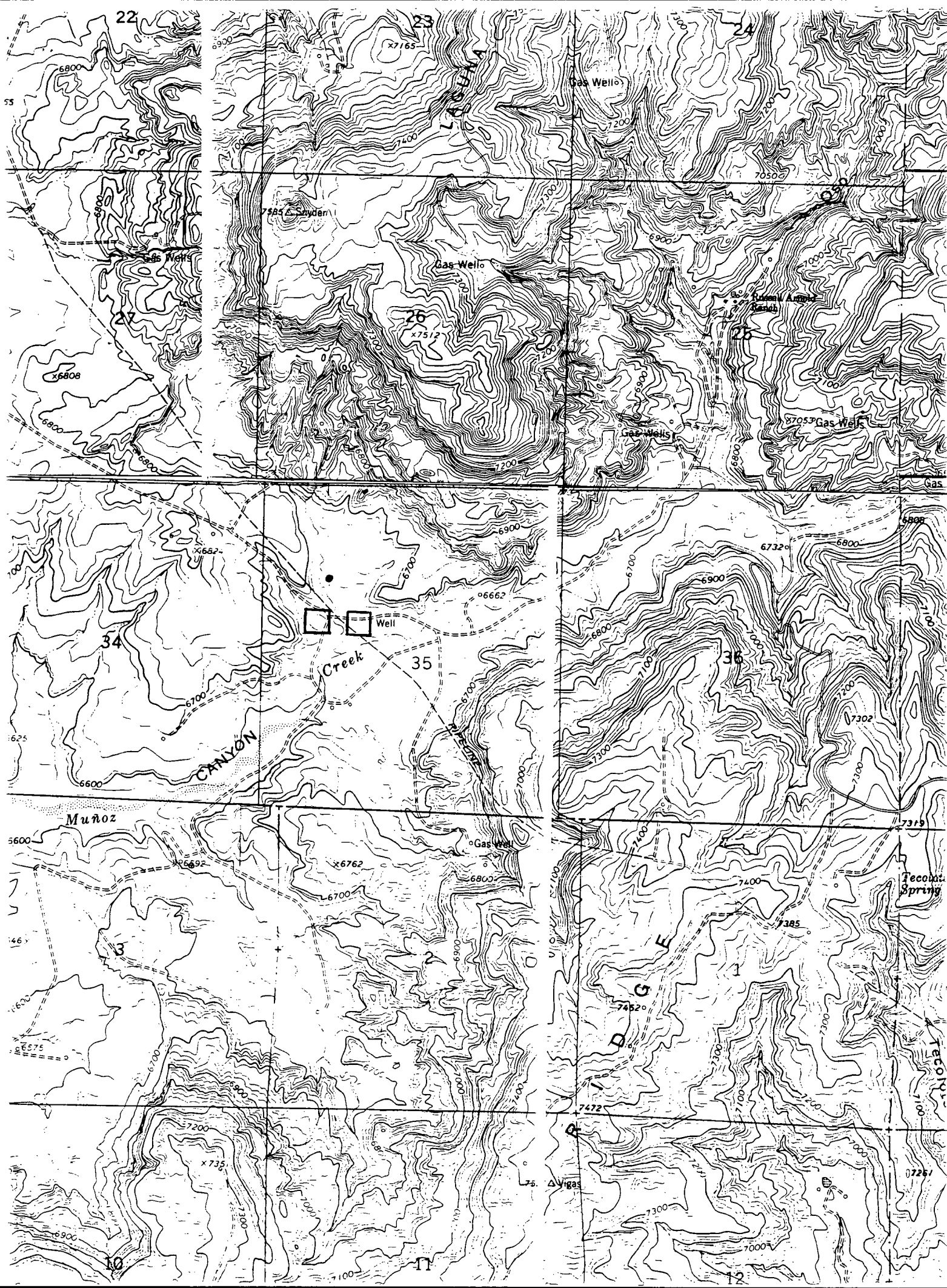
## *San Juan 28-5 Unit #72M Offset Operator / Owner Plat Nonstandard Location*

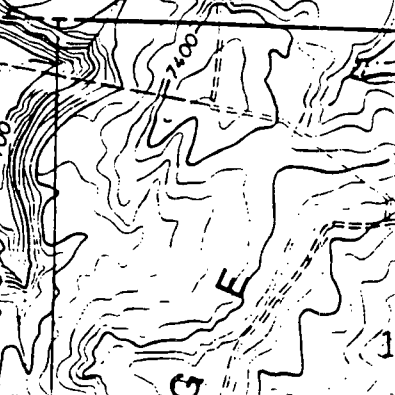
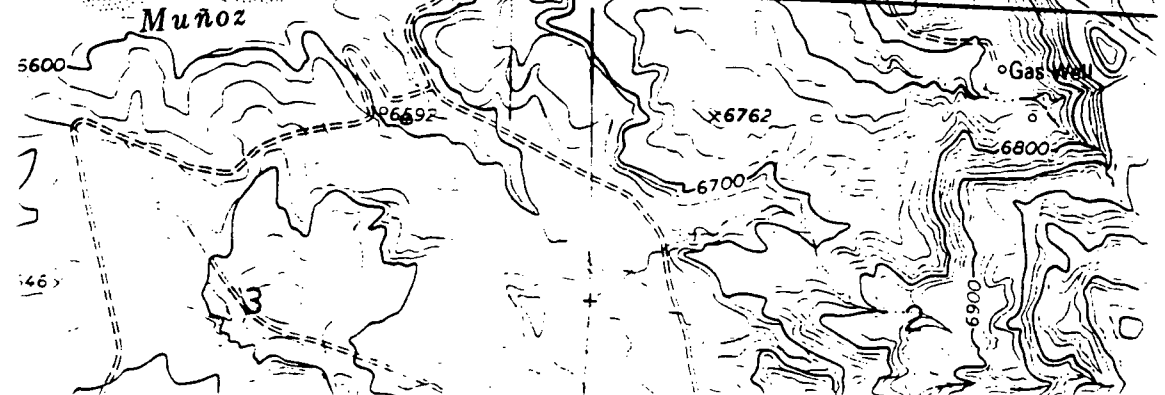
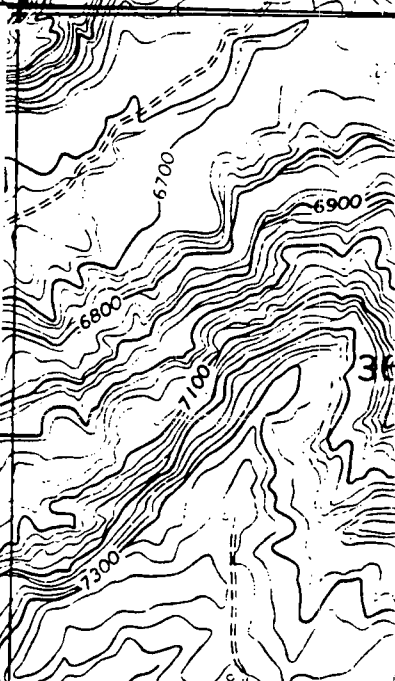
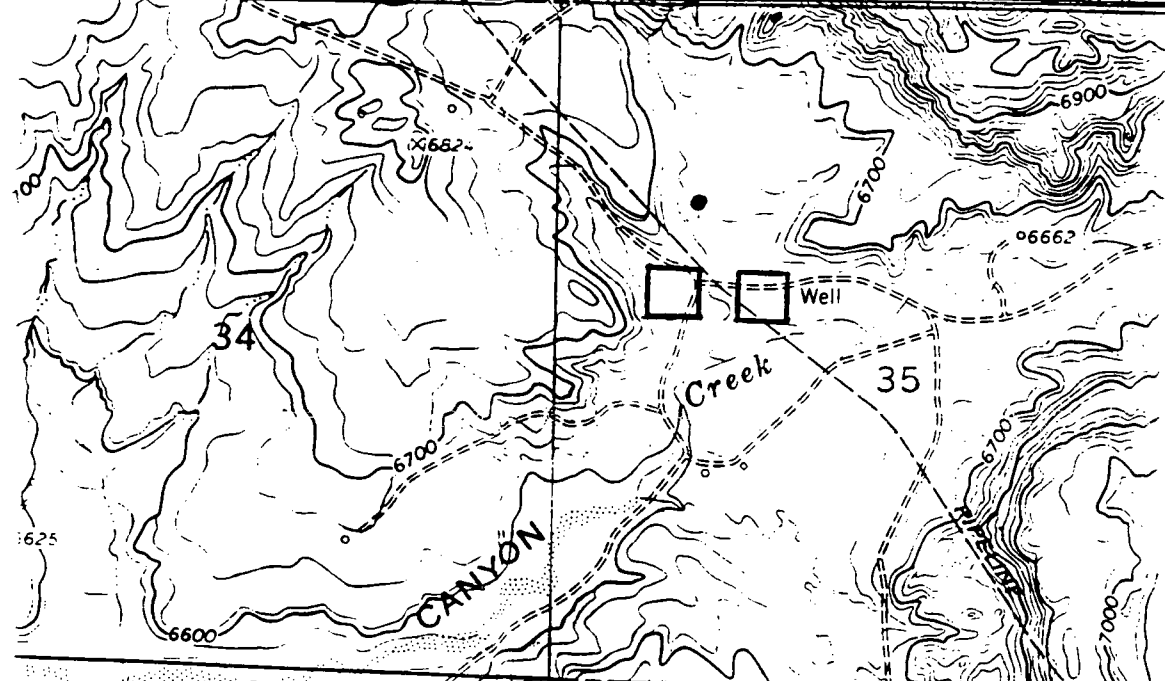
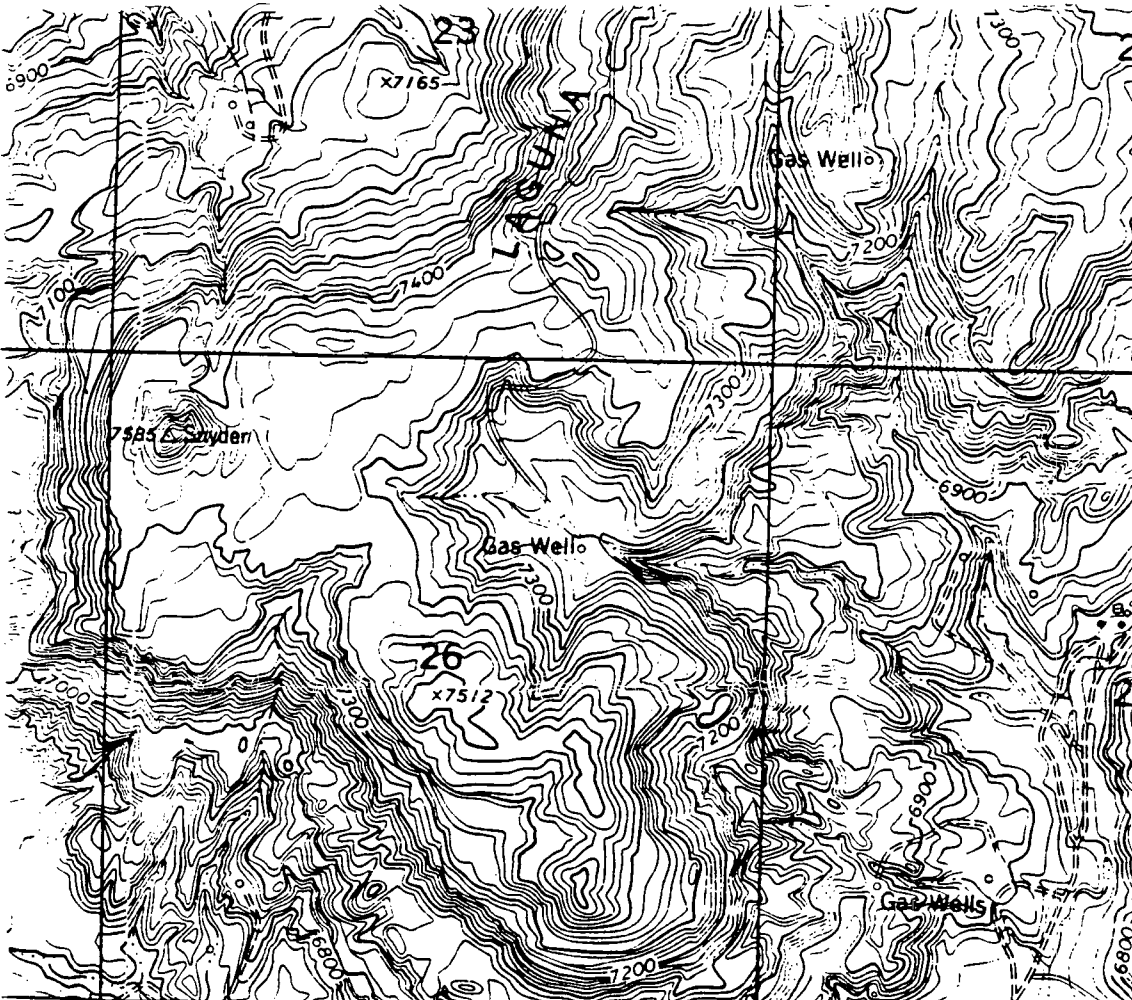
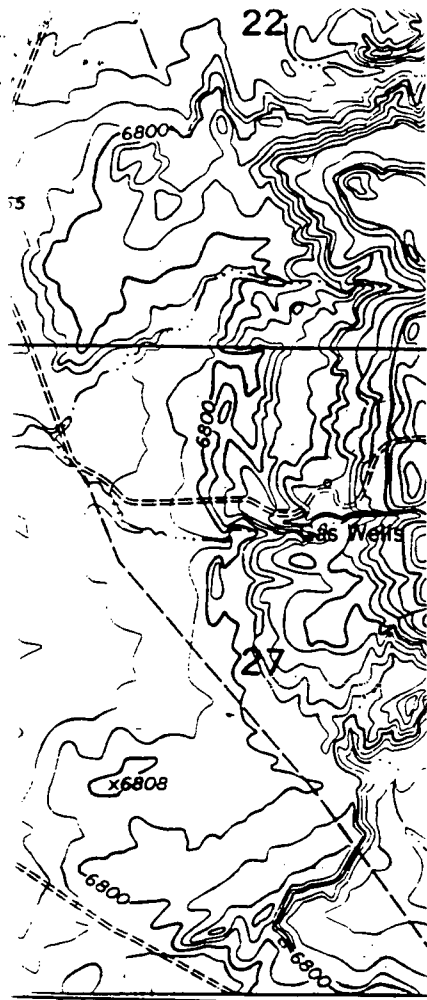
Dakota (Non standard Dedication)  
(covering lot 1, Sec. 34 &  
lots 3,4, N/2 SW/4, S/2 NW/4,  
NE/4 NW/4 Sec. 35)

Dakota Formation Well  
Township 28 North, Range 5 West  
1590' FNL, 1140' FWL Section 35



1) Burlington Resources Oil and Gas Company







6-25-97



State of New Mexico  
OIL CONSERVATION COMMISSION

From

MICHAEL E. STOGNER  
PETROLEUM ENGINEER

Memo

To *Ms. Peggy Bradfield*

*Why can't this location be moved to the south where it would be at least 790' from the NW $\frac{1}{4}$  NW $\frac{1}{4}$  of Sec. 35 but remain within the NW $\frac{1}{4}$  of the section (see the red area in the attached C-102).*

*M. Stogner*

P.O. BOX 2088  
LAND OFFICE BUILDING  
SANTA FE, NEW MEXICO 87501  
505-827-5811

# BURLINGTON RESOURCES

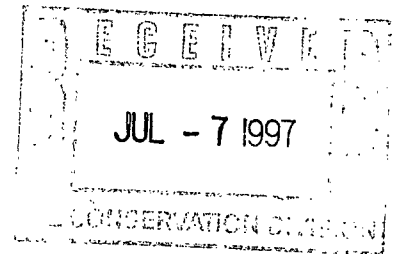
SAN JUAN DIVISION

July 2, 1997

FAXED (505-827-8177) on July 2, 1997

New Mexico Oil Conservation Division  
Attention: Mr. Michael Stogner  
2040 South Pacheco  
Santa Fe, New Mexico 87505

Re: San Juan 28-5 Unit #72M  
SW NW Section 35, T28N, R5W  
Mesaverde/Dakota Non-Standard Location  
Rio Arriba County, New Mexico



Dear Michael:

Your note regarding the Dakota non-standard location application has been received.

We would like to further expand on our reasoning for the non-standard location. A plat is attached which shows the well location in relationship to the San Juan 28-5 Unit and the Dakota non-standard proration units under OCD Order NSP-2948. The only reason the Dakota well is non-standard is due to its proximity to the internal proration unit boundary. The Mesaverde formation is a standard location since its dedication is the N/2 Section 35, T28N, R5W and it falls within the acceptable window. Since the well is located in a federal unit and committed to the existing Dakota Participating Area, (plat attached), the non-standard location encroachment will not affect the correlative rights for the Dakota Participating Area owners.

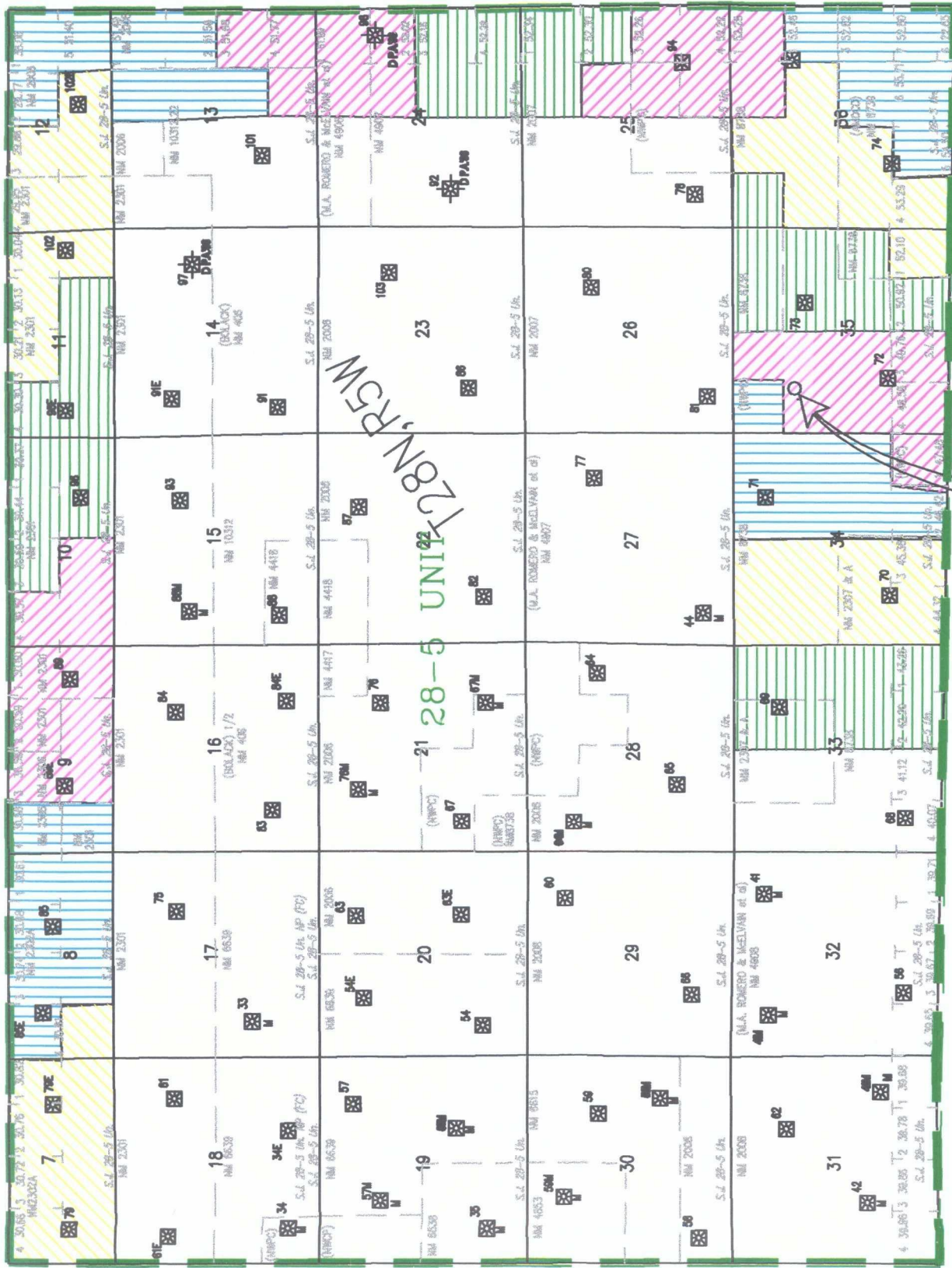
In addition, the fee surface owner, Richard Arnold, has been consulted regarding the well location and he is in agreement with the current location of 1590' FNL, 1140' FWL. The location causes the least interference with his operations and avoids being placed near a water well, corrals and grazing area.

If at all possible, we would appreciate your approval of the Dakota non-standard location to avoid the expense of restaking and processing a new well location with regulatory agencies and the surface owner.

Please call me at 505-326-9727 if there are any further concerns regarding our request. Thank you for your assistance.

Sincerely,

  
Peggy Bradfield  
Regulatory/Compliance Administrator



# SAN JUAN 28-5 UNIT

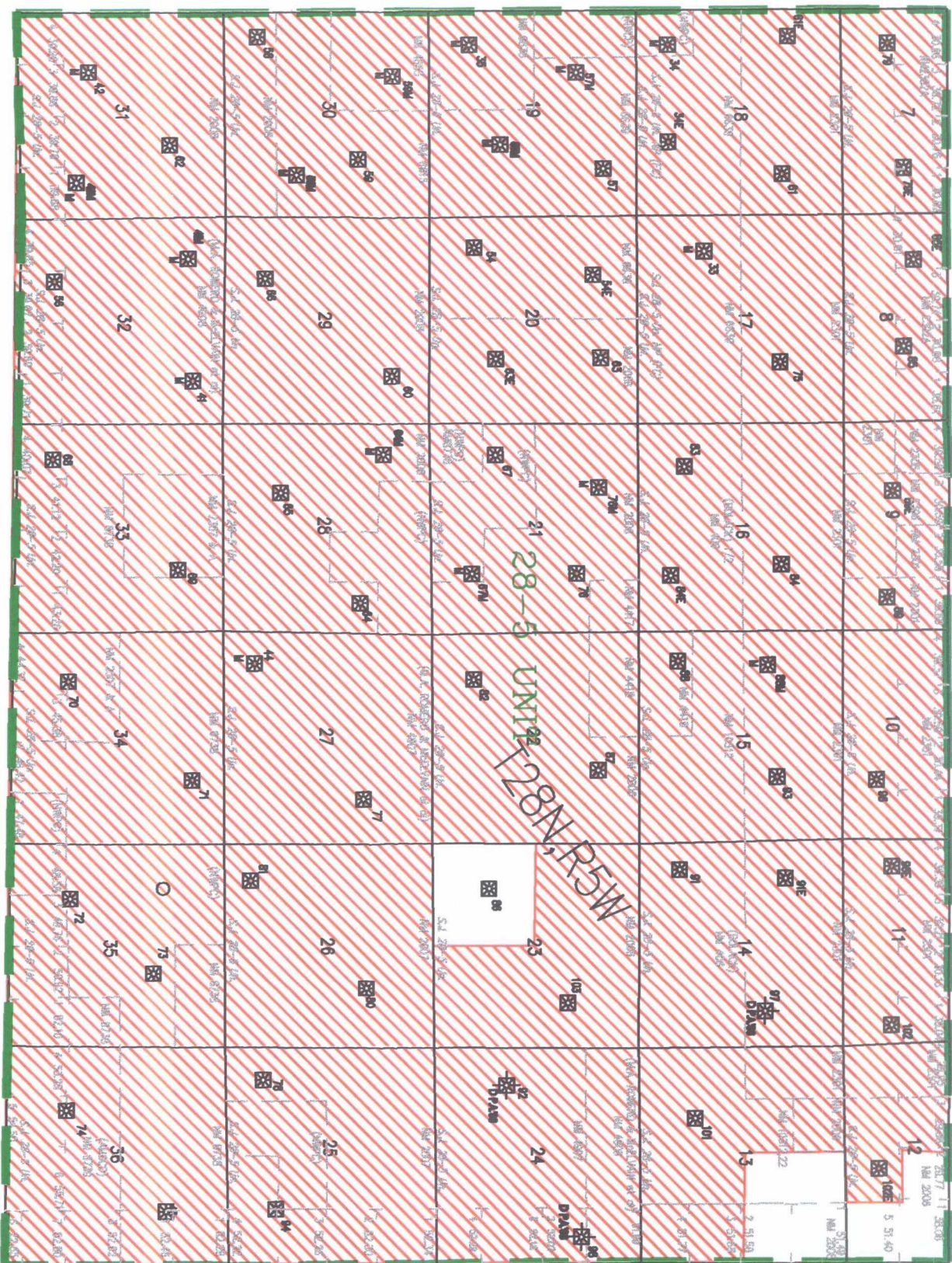
PROPOSED LOCATION  
San Juan 28-5 #72M

NON-STANDARD GAS PROPRATION UNITS  
BASIN DAKOTA GAS POOL ORDER NO R-2948

MEBAVERDE  
DAKOTA

LAND DEPARTMENT  
JUNE 12, 1997





# SAN JUAN 28-5 UNIT

DAKOTA PARTICIPATING AREA  
20th Expansion Effective 11/1/79

LEASER  
DAKOTA

LAND DEPARTMENT  
JUNE 12, 1997



**BURLINGTON RESOURCES  
OIL AND GAS COMPANY**

**DRILLING DEPARTMENT**

3535 EAST 30TH STREET, FARMINGTON, NM 87402

P.O. BOX 4289, FARMINGTON, NM 87499

(505) 326-9700 FAX: (505) 326-9563

DATE:

7/2/97

TO:

Michael Stogner

COMPANY:

NMOC

TELECOPIER:

827-8177

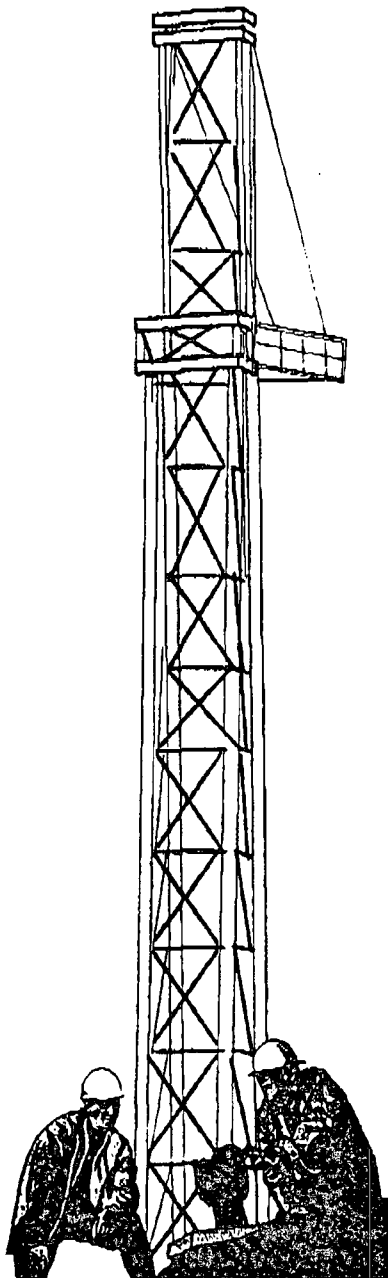
FROM:

Peggy

NO. OF PAGES (including cover):

COMMENTS:

\_\_\_\_\_  
\_\_\_\_\_  
\_\_\_\_\_  
\_\_\_\_\_  
\_\_\_\_\_  
\_\_\_\_\_  
\_\_\_\_\_



**BURLINGTON  
RESOURCES**

SAN JUAN DIVISION

July 2, 1997

FAXED (505-827-8177) on July 2, 1997

New Mexico Oil Conservation Division  
Attention: Mr. Michael Stogner  
2040 South Pacheco  
Santa Fe, New Mexico 87505

Re: San Juan 28-5 Unit #72M  
SW NW Section 35, T28N, R5W  
Mesaverde/Dakota Non-Standard Location  
Rio Arriba County, New Mexico

Dear Michael:

Your note regarding the Dakota non-standard location application has been received.

We would like to further expand on our reasoning for the non-standard location. A plat is attached which shows the well location in relationship to the San Juan 28-5 Unit and ~~the Dakota non-standard proration units under OGD Order NSP-2948~~. The only reason the Dakota well is non-standard is due to its proximity to the internal proration unit boundary. ~~The Mesaverde formation is a standard location since its dedication is the N/2 Section 35, T28N, R5W and it falls within the acceptable window.~~ Since the well is located in a federal unit and committed to the existing Dakota Participating Area, (plat attached), the non-standard location encroachment will not affect the correlative rights for the Dakota Participating Area owners.

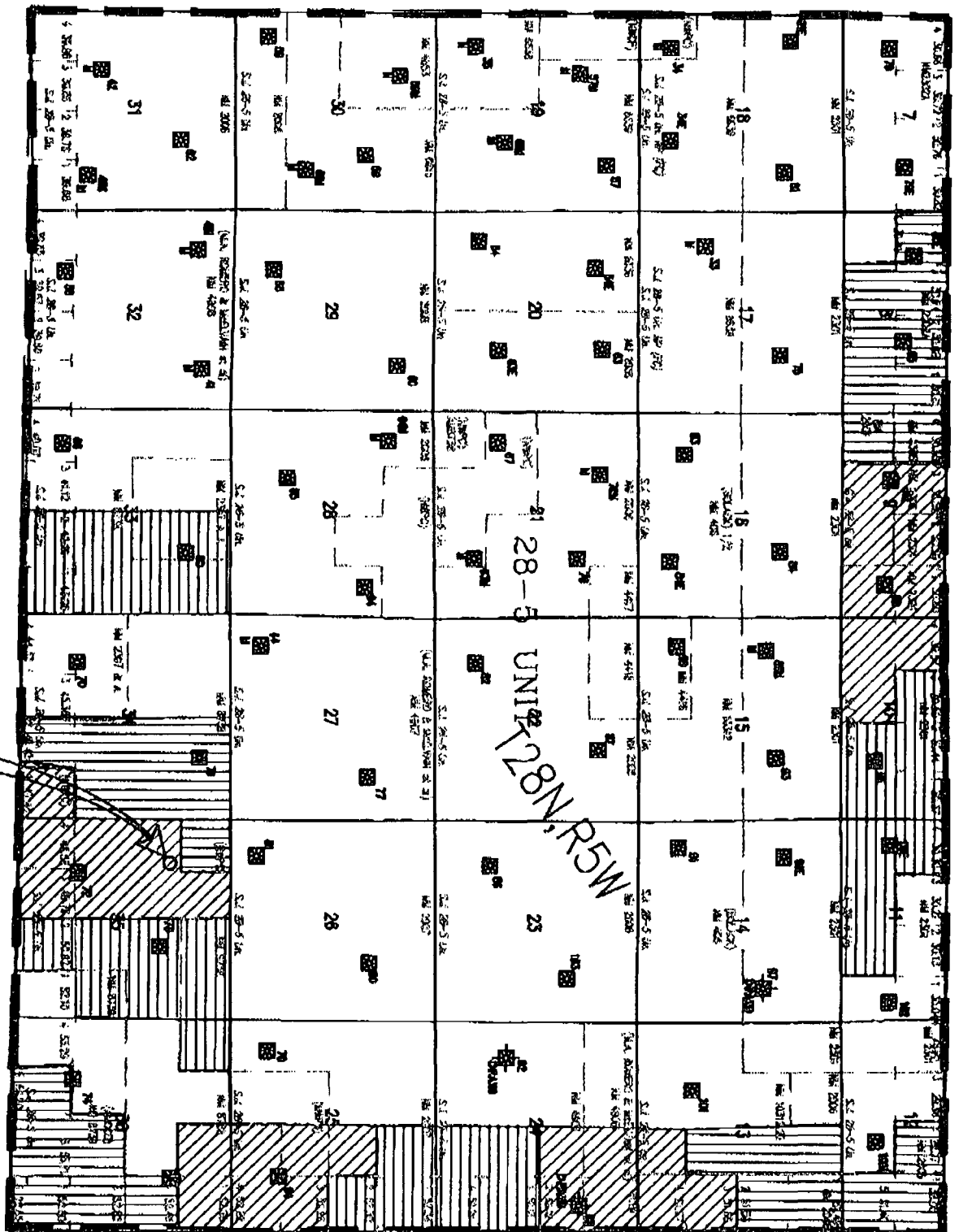
In addition, the fee surface owner, Richard Arnold, has been consulted regarding the well location and he is in agreement with the current location of 1590' FNL, 1140' FWL. The location causes the least interference with his operations and avoids being placed near a water well, corrals and grazing area.

If at all possible, we would appreciate your approval of the Dakota non-standard location to avoid the expense of restaking and processing a new well location with regulatory agencies and the surface owner.

Please call me at 505-326-9727 if there are any further concerns regarding our request. Thank you for your assistance.

Sincerely,

Peggy Bradfield  
Regulatory/Compliance Administrator



SAN JUAN 28-5 UNIT

**PROPOSED LOCATION**  
**Ben Juan 28-5 472M**

**NON-STANDARD GAS PROPORTION UNITS  
SAND DAKOTA GAS POOL ORDER NO F-2348**

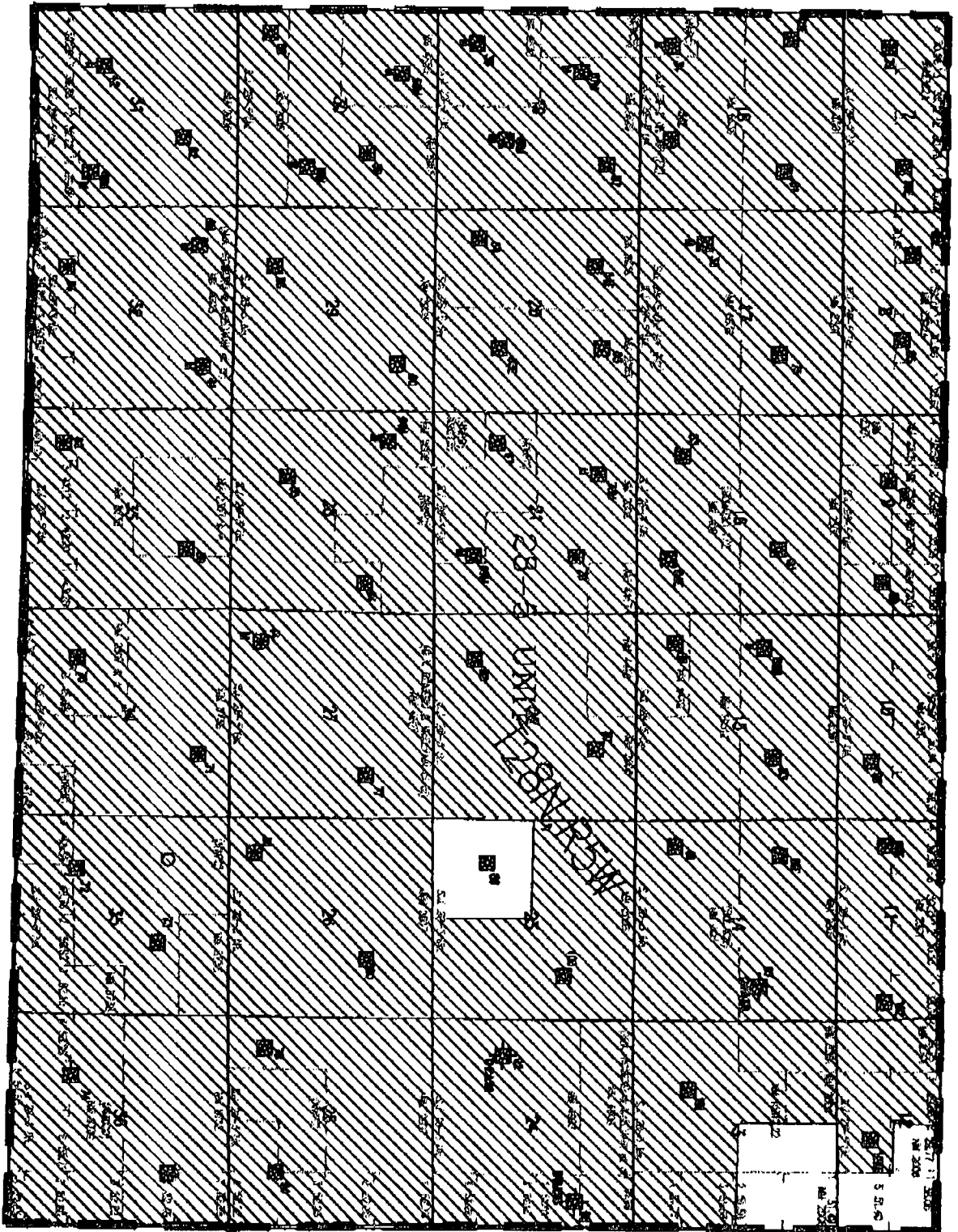
**MEMORIE**  
**DOCTORA**

**LAND DEPARTMENT**  
**JUNE 12 1967**

## SAN JUAN 28-5 UNIT

● NEWMINE  
■ DAKOTA

DAKOTA PARTICIPATING AREA  
20th Expansion Effective 11/79



LAND DEPARTMENT  
JUNE 12, 1997



## **Mike Stogner**

---

**From:** Frank Chavez  
**To:** Mike Stogner  
**Subject:** RE: San Juan "28-5" Unit #72-M  
**Date:** Monday, July 28, 1997 9:32AM

This looks OK. Why is 28-5 in quotation marks?

-----  
**From:** Mike Stogner  
**Sent:** Sunday, July 27, 1997 4:35 PM  
**To:** Kathy Valdes  
**Cc:** Ernie Busch; Frank Chavez  
**Subject:** San Juan "28-5" Unit #72-M

Draft adm. ord. for Burlington's SJ "28-5" Un. #72-M; 1590' FNL & 1140' FWL (E) Sec.  
35-T28N-R5W:

BEFORE THE OIL CONSERVATION COMMISSION  
OF THE STATE OF NEW MEXICO

IN THE MATTER OF THE HEARING  
CALLED BY THE OIL CONSERVATION  
COMMISSION OF NEW MEXICO FOR  
THE PURPOSE OF CONSIDERING:

CASE No. 3272  
Order No. R-2948

APPLICATION OF EL PASO NATURAL GAS  
COMPANY FOR NON-STANDARD GAS PRORA-  
TION UNITS, BASIN-DAKOTA GAS POOL,  
RIO ARriba COUNTY, NEW MEXICO.

ORDER OF THE COMMISSION

BY THE COMMISSION:

This cause came on for hearing at 9 o'clock a.m. on June 30, 1965, at Santa Fe, New Mexico, before Examiner Daniel S. Nutter.

NOW, on this 16th day of August, 1965, the Commission, a quorum being present, having considered the testimony, the record, and the recommendations of the Examiner, and being fully advised in the premises,

FINDS:

(1) That due public notice having been given as required by law, the Commission has jurisdiction of this cause and the subject matter thereof.

(2) That the applicant, El Paso Natural Gas Company, seeks approval of 51 non-standard gas proration units in the Basin-Dakota Gas Pool, Rio Arriba County, New Mexico, in the following area:

TOWNSHIP 28 NORTH, RANGE 5 WEST, NMPM  
Sections 7 through 13, 24 and 25, and  
33 through 36

TOWNSHIP 28 NORTH, RANGE 6 WEST, NMPM  
Sections 7 through 12, 18 and 19, and  
30 through 34

TOWNSHIP 28 NORTH, RANGE 7 WEST, NMPM  
Sections 7 through 12, 18 and 19, and  
30 through 36

(3) That a standard gas proration unit in the Basin-Dakota Gas Pool consists of 320 acres, and that each of the proposed non-standard units exceeds 320 acres.

(4) That non-standard units are necessary in the subject area due to variations in legal subdivisions of the U. S. Public Land Survey.

(5) That the non-standard units created in the subject area should approximate 320 acres, insofar as is practicable, in order to afford to the owner of each property in the Basin-Dakota Gas Pool the opportunity to produce his just and equitable share of the gas in the pool, and otherwise prevent waste and protect correlative rights.

(6) That non-standard gas proration units approximating 320 acres, insofar as is practicable, should be created in the subject area, and that the subject application should otherwise be denied.

IT IS THEREFORE ORDERED:

(1) That the following-described non-standard gas proration units in the Basin-Dakota Gas Pool are hereby approved:

RIO ARriba COUNTY, NEW MEXICO  
TOWNSHIP 28 NORTH, RANGE 5 WEST, NMPM

Unit	Acres	Description
1	322.96	Section 7: Lots 1, 2, 3, and 4 and S/2 S/2 Section 8: SW/4 SW/4
2	313.42	Section 8: Lots 1, 2, 3, and 4, SE/4 SW/4, and S/2 SE/4 Section 9: Lot 4 and SW/4 SW/4
3	322.35	Section 9: Lots 1, 2, and 3, SE/4 SW/4, and S/2 SE/4 Section 10: Lot 4 and S/2 SW/4
4	321.61	Section 10: Lots 1, 2, and 3 and S/2 SE/4 Section 11: Lot 4, S/2 SW/4, and SW/4 SE/4

-3-

CASE No. 3272

Order No. R-2948

TOWNSHIP 28 NORTH, RANGE 5 WEST, NMPM (CONT.)

Unit	Acres	Description
5	310.19	Section 11: Lots 1, 2, and 3 and SE/4 SE/4 Section 12: Lots 3 and 4, S/2 SW/4, and SW/4 SE/4
6	342.30	Section 12: Lots 1, 2, and 5 Section 13: Lots 1 and 2, W/2 NE/4, and NW/4 SE/4
7	327.36	Section 13: Lots 3 and 4 and SW/4 SE/4 Section 24: Lots 1 and 2 and W/2 NE/4
8	329.09	Section 24: Lots 3 and 4 and W/2 SE/4 Section 25: Lots 1 and 2 and NW/4 NE/4
9	316.76	Section 25: Lots 3 and 4, SW/4 NE/4 and W/2 SE/4 Section 36: Lot 1 and NW/4 NE/4
10	330.74	Section 36: Lots 2, 3, 5, 6, 7, and 8 and NW/4 SE/4
11	345.39	Section 36: Lot 4, NE/4 NW/4, S/2 NW/4, SW/4 NE/4, and N/2 SW/4 Section 35: Lot 1
12	330.92	Section 36: NW/4 NW/4 Section 35: Lot 2, NE/4, and N/2 SE/4
13	345.82	Section 35: Lots 3 and 4, NE/4 NW/4, S/2 NW/4, and N/2 SW/4 Section 34: Lot 1
14	326.42	Section 35: NW/4 NW/4 Section 34: Lot 2, NE/4, and N/2 SE/4
15	329.70	Section 34: W/2
16	325.46	Section 33: E/2



-4-

CASE No. 3272

Order No. R-2948

TOWNSHIP 28 NORTH, RANGE 6 WEST, NMPM

Unit	Acres	Description
1	353.10	Section 12: Lots 1, 2, 3, and 4 and S/2 S/2 Section 11: Lot 1 and SE/4 SE/4
2	353.83	Section 11: Lots 2, 3, and 4, S/2 SW/4, and SW/4 SE/4 Section 10: Lots 1 and 2 and S/2 SE/4
3	354.79	Section 10: Lots 3 and 4 and S/2 SW/4 Section 9: Lots 1, 2, and 3, SE/4 SW/4, and S/2 SE/4
4	356.16	Section 9: Lot 4 and SW/4 SW/4 Section 8: Lots 1, 2, 3, and 4 and S/2 S/2
5	326.18	Section 7: Lots 1, 2, 3, 4, and 5, SE/4 SW/4, and S/2 SE/4 Section 18: Lot 1 and NE/4 NW/4
6	328.37	Section 18: Lots 2, 3, and 4, SE/4 NW/4, and E/2 SW/4 Section 19: Lots 1 and 2 and E/2 NW/4
7	328.77	Section 19: Lots 3 and 4 and E/2 SW/4 Section 30: Lots 1, 2, and 3, E/2 NW/4, and NE/4 SW/4
8	334.79	Section 30: Lot 4 and SE/4 SW/4 Section 31: Lots 1, 2, 3, 4, and 5, E/2 NW/4, and NE/4 SW/4
9	326.29	Section 31: E/2
10	325.23	Section 32: W/2
11	325.04	Section 32: E/2
12	325.59	Section 33: W/2
13	325.02	Section 33: E/2
14	324.69	Section 34: W/2
15	324.63	Section 34: E/2

-5-

CASE No. 3272

Order No. R-2948

TOWNSHIP 28 NORTH, RANGE 7 WEST, NMPM

Unit	Acres	Description
1	321.22	Section 12: Lots 1, 2, 3, and 4 and S/2 S/2 Section 11: Lot 1
2	333.76	Section 11: Lots 2, 3, and 4 and S/2 S/2 Section 10: Lot 1 and SE/4 SE/4
3	331.55	Section 10: Lots 2, 3, and 4, S/2 SW/4, and SW/4 SE/4 Section 9: Lots 1 and 2 and SE/4 SE/4
4	338.02	Section 9: Lots 3 and 4, S/2 SW/4, and SW/4 SE/4 Section 8: Lots 1, 2, and 3 and SE/4 SE/4
5	313.00	Section 8: Lot 4, S/2 SW/4, and SW/4 SE/4 Section 7: Lot 1, SE/4 SW/4, and S/2 SE/4
6	331.11	Section 7: Lots 2, 3, 4, and 5 Section 18: Lots 1, 2, and 3 and E/2 NW/4
7	345.30	Section 18: Lot 4 and E/2 SW/4 Section 19: Lots 1, 2, and 3, E/2 NW/4, and NE/4 SW/4
8	342.17	Section 19: Lot 4 and SE/4 SW/4 Section 30: Lots 1, 2, 3, and 4, E/2 NW/4, and NE/4 SW/4
9	316.50	Section 30: SE/4 SW/4 Section 31: Lot 1, E/2 NW/4, and NE/4
10	339.73	Section 31: Lots 2, 3, 4, 5, 6, and 7, NE/4 SW/4, and N/2 SW/4
11	315.36	Section 32: W/2
12	315.68	Section 32: E/2
13	316.00	Section 33: W/2
14	316.32	Section 33: E/2

-6-

CASE No. 3272

Order No. R-2948

TOWNSHIP 28 NORTH, RANGE 7 WEST, NMPM (CONT.)

Unit	Acres	Description
15	318.40	Section 34: W/2
16	324.70	Section 35: W/2
17	327.70	Section 35: E/2
18	328.82	Section 36: W/2
19	328.06	Section 36: E/2

(2) That the subject application is otherwise hereby denied.

(3) That jurisdiction of this cause is retained for the entry of such further orders as the Commission may deem necessary.

DONE at Santa Fe, New Mexico, on the day and year hereinabove designated.

STATE OF NEW MEXICO  
OIL CONSERVATION COMMISSION

JACK M. CAMPBELL, Chairman

GUYTON B. HAYS, Member

S E A L

A. L. PORTER, JR., Member & Secretary

esr/

BEFORE THE OIL CONSERVATION COMMISSION  
OF THE STATE OF NEW MEXICO

IN THE MATTER OF THE HEARING  
CALLED BY THE OIL CONSERVATION  
COMMISSION OF NEW MEXICO FOR  
THE PURPOSE OF CONSIDERING:

CASE No. 4042  
Order No. R-2948-A

APPLICATION OF EL PASO NATURAL GAS  
COMPANY FOR AN AMENDMENT TO ORDER  
NO. R-2948, RIO ARriba COUNTY, NEW  
MEXICO.

ORDER OF THE COMMISSION

BY THE COMMISSION:

This cause came on for hearing at 9 a.m. on February 5, 1969,  
at Santa Fe, New Mexico, before Examiner Daniel S. Nutter.

NOW, on this 11th day of February, 1969, the Commission, a  
quorum being present, having considered the testimony, the record,  
and the recommendations of the Examiner, and being fully advised  
in the premises,

FINDS:

(1) That due public notice having been given as required by  
law, the Commission has jurisdiction of this cause and the subject  
matter thereof.

(2) That by Order No. R-2948, dated August 16, 1965, the  
Commission approved several non-standard gas proration units in  
the Basin-Dakota Gas Pool, Rio Arriba County, New Mexico, among  
them the following:

TOWNSHIP 28 NORTH, RANGE 6 WEST, NMPM

Unit	Acres	Description
12	325.59	Section 33: W/2
13	325.02	Section 33: E/2



-2-

CASE No. 4042

Order No. R-2948-A

TOWNSHIP 28 NORTH, RANGE 7 WEST, NMPM

Unit	Acres	Description
16	324.70	Section 35: W/2
17	327.70	Section 35: E/2

(3) That the applicant, El Paso Natural Gas Company, now seeks amendment of Order No. R-2948 to change the acreage dedication comprising the above-described non-standard gas proration units to comprise the following acreage:

TOWNSHIP 28 NORTH, RANGE 6 WEST, NMPM

Unit	Acres	Description
12	320	Section 33: N/2
13	330.71	Section 33: S/2

TOWNSHIP 28 NORTH, RANGE 7 WEST, NMPM

Unit	Acres	Description
16	320	Section 35: N/2
17	332.40	Section 35: S/2

(4) That the N/2 of said Section 33 has been admitted to the participating area for the Dakota formation of the San Juan 28-6 Unit.

(5) That the S/2 of said Section 35 has been admitted to the participating area for the Dakota formation of the San Juan 28-7 Unit.

(6) That each participating area should coincide with a proration unit.

(7) That approval of the subject application will allow each of the aforesaid participating areas to coincide with a proration unit and will afford the applicant the opportunity

-3-

CASE No. 4042

Order No. R-2948-A

to produce its just and equitable share of the gas in the Basin-Dakota Gas Pool and will otherwise prevent waste and protect correlative rights.

IT IS THEREFORE ORDERED:

(1) That Order No. R-2948, dated August 16, 1965, is hereby amended by deleting therefrom the following-described non-standard gas proration units in the Basin-Dakota Gas Pool, Rio Arriba County, New Mexico:

TOWNSHIP 28 NORTH, RANGE 6 WEST, NMPM

Unit	Acres	Description
12	325.59	Section 33: W/2
13	325.02	Section 33: E/2

TOWNSHIP 28 NORTH, RANGE 7 WEST, NMPM

Unit	Acres	Description
16	324.70	Section 35: W/2
17	327.70	Section 35: E/2

and substituting in lieu thereof the following-described gas proration units:

TOWNSHIP 28 NORTH, RANGE 6 WEST, NMPM

Unit	Acres	Description
12	320	Section 33: N/2
13	330.71	Section 33: S/2

TOWNSHIP 28 NORTH, RANGE 7 WEST, NMPM

Unit	Acres	Description
16	320	Section 35: N/2
17	332.40	Section 35: S/2

-4-

CASE No. 4042

Order No. R-2948-A

(2) That jurisdiction of this cause is retained for the entry of such further orders as the Commission may deem necessary.

DONE at Santa Fe, New Mexico, on the day and year hereinabove designated.

STATE OF NEW MEXICO  
OIL CONSERVATION COMMISSION

DAVID F. CARGO, Chairman

ALEX J. ARMIJO, Member

A. L. PORTER, Jr., Member & Secretary

S E A L

esr/

CMD :  
OG5SECT

ONGARD  
INQUIRE LAND BY SECTION

05/16/97 17:50:21  
OGOMES -EMFT  
PAGE NO: 1

Sec : 34 Twp : 28N Rng : 05W Section Type : NORMAL

D 40.00  Federal owned  A	C 40.00  Federal owned	B 40.00  Federal owned  A	A 40.00  Federal owned  A
E 40.00  Federal owned	F 40.00  Federal owned	G 40.00  Federal owned	H 40.00  Federal owned

PF01 HELP  
PF07 BKWD

PF02  
PF08 FWD

PF03 EXIT  
PF09 PRINT

PF04 GoTo  
PF10 SDIV

PF05  
PF11

PF06  
PF12

CMD :  
OG5SECT

ONGARD  
INQUIRE LAND BY SECTION

05/16/97 17:50:28  
OGOMES -EMFT  
PAGE NO: 2

Sec : 34 Twp : 28N Rng : 05W Section Type : NORMAL

L 40.00  Federal owned  A A	K 40.00  Federal owned	J 40.00  Fee owned	I 40.00  Federal owned
4 44.32  Federal owned  A	3 45.38  Federal owned	2 46.42  Federal owned  A	1 47.48  <del>Federal owned</del>

PF01 HELP  
PF07 BKWD

PF02  
PF08 FWD

PF03 EXIT  
PF09 PRINT

PF04 GoTo  
PF10 SDIV

PF05  
PF11

PF06  
PF12

47.48



CMD :  
OG5SECT.

ONGARD  
INQUIRE LAND BY SECTION

05/16/97 17:49:57  
OGOMES -EMFT  
PAGE NO: 1

Sec : 35 Twp : 28N Rng : 05W Section Type : NORMAL

D 40.00  Federal owned	C 40.00  <del>Federal owned</del>	B 40.00  Federal owned	A 40.00  Federal owned
E 40.00  <del>Federal owned</del> A	F 40.00  <del>Federal owned</del>	G 40.00  Federal owned A A	H 40.00  Federal owned

PF01 HELP  
PF07 BKWD

PF02  
PF08 FWD

PF03 EXIT  
PF09 PRINT

PF04 GoTo  
PF10 SDIV

PF05  
PF11

PF06  
PF12

120

CMD :  
OG5SECT.

ONGARD  
INQUIRE LAND BY SECTION

05/16/97 17:50:04  
OGOMES -EMFT  
PAGE NO: 2

Sec : 35 Twp : 28N Rng : 05W Section Type : NORMAL

L 40.00  Fee owned A	K 40.00  Fee owned	J 40.00  Fee owned	I 40.00  Federal owned
4 48.58  Federal owned	3 49.76  Federal owned A	2 50.92  Federal owned A	1 52.10  Federal owned

PF01 HELP  
PF07 BKWD

PF02  
PF08 FWD

PF03 EXIT  
PF09 PRINT

PF04 GoTo  
PF10 SDIV

PF05  
PF11

PF06  
PF12

120  
80  
98.34  
1298.34  
47.48  
345.82

48.58  
49.76  
98.34