

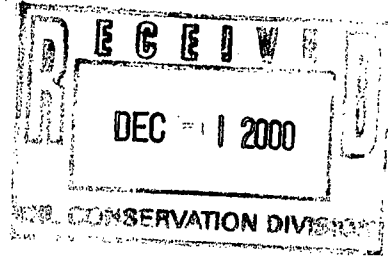
34631887

NSL(SD)

12/21/00

November 21, 2000

New Mexico Oil Conservation Division  
 Attn: Mr. Mike Stogner  
 2040 South Pacheco  
 Santa Fe, NM 87505



P.O. Box 3109  
 Midland TX 79702

Re: Application to form Project Area and request for Simultaneous Dedication for  
 F.B. Davis #8.

Dear Sir;

Texaco Exploration and Production Inc. respectfully requests approval to form a Project Area in the Teague Lower Paddock-Blinebry, N. formation. The Project Area will consist of 40 acres, as shown on the attached plat, and will accommodate the re-completion of F.B. Davis #8 into the referred formation. All of this acreage is within the F.B. Davis Lease.

The F.B. Davis #8 has a ~~non~~ standard surface location of 960' FNL and 2245' FEL of Section 8, T23S, R37E in Lea County. ~~The bottom-hole location is 833' FNL and 2245' FEL.~~

As shown on the plat, Texaco is also requesting simultaneous dedication in the Teague Lower Paddock-Blinebry, N. for F.B. Davis #6, as acreage will be shared with this well. This well has a non-standard surface location of 960' FNL and 2245' FEL of Section 8, T23S, R37E in Lea County.

Texaco is the sole offset operator surrounding the above cited wells. If you have any question concerning this matter please contact Joe Villalobos at (915) 688-4876, Denise Leake at 915-688-4752 or Tim Nein at (915) 688-4639. Thank you in advance for your attention to this matter.

Sincerely,

*Tim F. Nein*

Tim Nein  
 Production Engineer  
 Hobbs Operating Unit

cc: NMOCD (Hobbs)  
 File  
 Attachments

*Phone Conversation  
 1-30*

*(DHC) →*

*- recompletion of #6 sqx (correct) pert.  
 and recomplete as Blinebry.  
 - not directional drill  
 on the #8*

*- Deched 5400 Original  
 to ~6000 in Nov/  
 Dec.*

## DISTRICT I

P.O. Box 1980, Hobbs, NM 88241-1980

## DISTRICT II

P.O. Box Drawer DD, Artesia, NM 88211-0719

## DISTRICT III

1000 Rio Brazos Rd., Aztec, NM 87410

## DISTRICT IV

P.O. Box 2088, Santa Fe, NM 87504-2088

State of New Mexico

Energy, Minerals and Natural Resources Department

Form C-10

Revised February 10, 199

Instructions on back

Submit to Appropriate District Office

State Lease - 4 Copie

Fee Lease - 3 Copie

☐ AMENDED REPORT

## OIL CONSERVATION DIVISION

P.O. Box 2088

Santa Fe, New Mexico 87504-2088

## WELL LOCATION AND ACREAGE DEDICATION PLAT

<sup>1</sup> API Number 30-025-34105	<sup>2</sup> Pool Code 96314	<sup>3</sup> Pool Name Teague Lower Paddock Blinebry North Assoc
<sup>4</sup> Property Code 013195	<sup>5</sup> Property Name DAVIS, F.B.	<sup>6</sup> Well No. 6
<sup>7</sup> OGRID Number 022351	<sup>8</sup> Operator Name TEXACO EXPLORATION & PRODUCTION INC.	<sup>9</sup> Elevation 3325' GL

<sup>10</sup> Surface Location

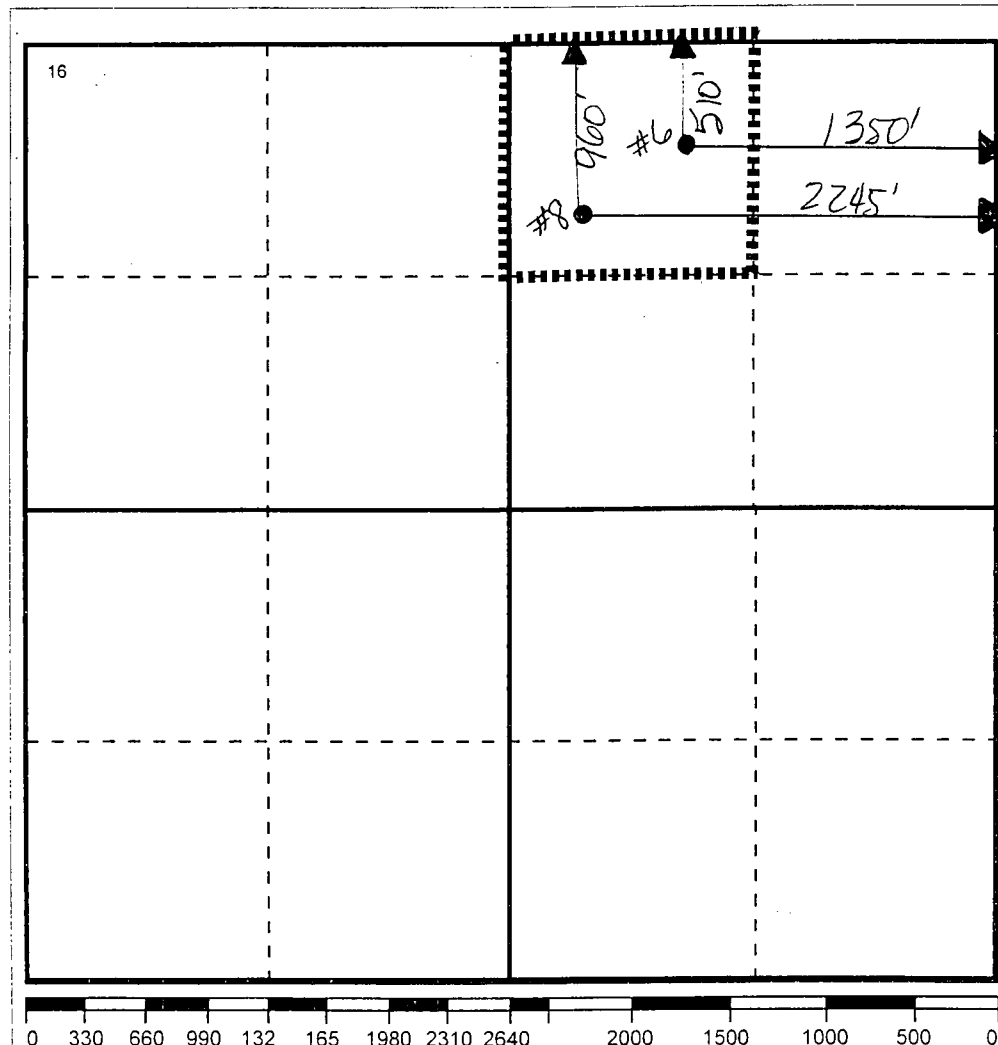
UI or lot no	Section	Township	Range	Lot.Idn	Feet From The	North/South Line	Feet From The	East/West Line	County
B	8	23-S	37-E		510'	NORTH	1350'	EAST	LEA

<sup>11</sup> Bottom Hole Location If Different From Surface

UI or lot no	Section	Township	Range	Lot.Idn	Feet From The	North/South Line	Feet From The	East/West Line	County

<sup>12</sup> Dedicated Acre 40	<sup>13</sup> Joint or Infill No	<sup>14</sup> Consolidation Code	<sup>15</sup> Order No.
------------------------------------	-------------------------------------	----------------------------------	-------------------------

NO ALLOWABLE WILL BE ASSIGNED TO THIS COMPLETION UNTIL ALL INTERESTS HAVE BEEN CONSOLIDATED  
OR A NON-STANDARD UNIT HAS BEEN APPROVED BY THE DIVISION



## 17 OPERATOR CERTIFICATION

I hereby certify that the information contained herein is true and complete to the best of my knowledge and belief

Signature

Printed Name

J. Denise Leake

Positio

Engineering Assistant

Date

11/29/00

## 18 SURVEYOR CERTIFICATION

I hereby certify that the well location shown on this plat was plotted from field notes of actual surveys made by me or under my supervision, and that the same is true and correct to the best of my knowledge and belief.

Date Surveyed

Signature &amp; Seal of

Professional Surveyor

Certificate No.

## DISTRICT I

P.O. Box 1980, Hobbs, NM 88241-1980

## DISTRICT II

P.O. Box Drawer DD, Artesia, NM 88211-0719

## DISTRICT III

1000 Rio Brazos Rd., Aztec, NM 87410

## DISTRICT IV

P.O. Box 2088, Santa Fe, NM 87504-2088

State of New Mexico  
Energy, Minerals and Natural Resources Department

## OIL CONSERVATION DIVISION

P.O. Box 2088  
Santa Fe, New Mexico 87504-2088

Form C-10

Revised February 10, 1999

Instructions on back

Submit to Appropriate District Office

State Lease - 4 Copie

Fee Lease - 3 Copie

☐ AMENDED REPORT

## WELL LOCATION AND ACREAGE DEDICATION PLAT

<sup>1</sup> API Number 30-025-35028	<sup>2</sup> Pool Code 96313	<sup>3</sup> Pool Name Teague Lwr Paddock/Blaineby North Assoc.
<sup>4</sup> Property Code 13195	<sup>5</sup> Property Name F.B. DAVIS	<sup>6</sup> Well No. 8
<sup>7</sup> OGRID Number 022351	<sup>8</sup> Operator Name TEXACO EXPLORATION & PRODUCTION INC.	<sup>9</sup> Elevation 3327'

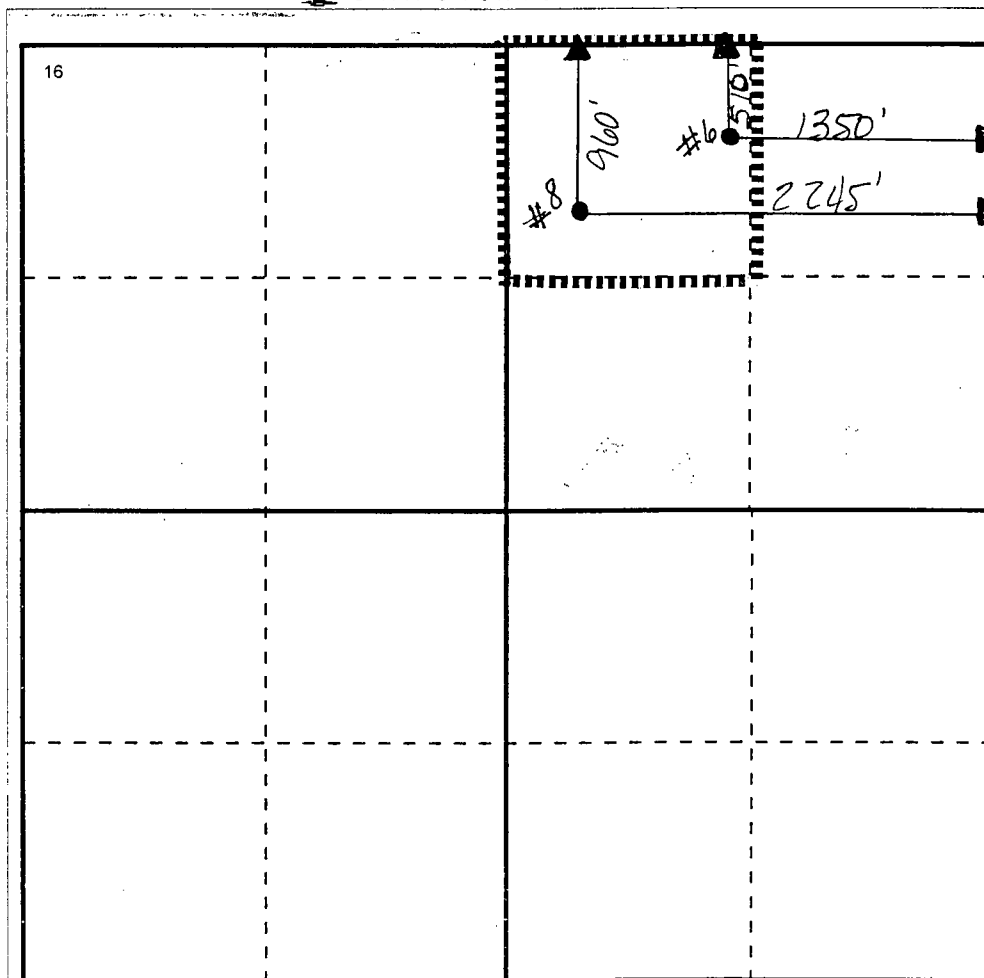
<sup>10</sup> Surface Location

UI or lot no	Section	Township	Range	Lot.Idn	Feet From The	North/South Line	Feet From The	East/West Line	County
B	8	23S	37E		960	NORTH	2245	EAST	LEA

<sup>11</sup> Bottom Hole Location If Different From Surface

UI or lot no	Section	Township	Range	Lot.Idn	Feet From The	North/South Line	Feet From The	East/West Line	County

<sup>12</sup> Dedicated Acre 40	<sup>13</sup> Joint or Infill No	<sup>14</sup> Consolidation Code	<sup>15</sup> Order No.
------------------------------------	-------------------------------------	----------------------------------	-------------------------

NO ALLOWABLE WILL BE ASSIGNED TO THIS COMPLETION UNTIL ALL INTERESTS HAVE BEEN CONSOLIDATED  
OR A NON-STANDARD UNIT HAS BEEN APPROVED BY THE DIVISION

## 17 OPERATOR CERTIFICATION

I hereby certify that the information  
contained herein is true and complete to the  
best of my knowledge and belief

Signature

Printed Name

J. Denise Leake

Positio

Engineering Assistant

Date

11/29/00

## 18 SURVEYOR CERTIFICATION

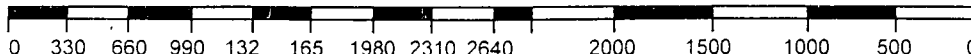
I hereby certify that the well location shown  
on this plat was plotted from field notes of  
actual surveys made by me or under my  
supervision, and that the same is true and  
correct to the best of my knowledge and  
belief.

Date Surveyed

Signature &amp; Seal of

Professional Surveyor

Certificate No.



CMD :  
OG5SECT

ONGARD  
INQUIRE LAND BY SECTION

01/30/01 10:06:17  
OGOMES -TPME  
PAGE NO: 1

Sec : 08 Twp : 23S Rng : 37E Section Type : NORMAL

D 40.00	C 40.00	B 40.00	A 40.00
Fee owned U A	Fee owned U A A A	Fee owned U A A A P	Fee owned U A A A
E 40.00	F 40.00	G 40.00	H 40.00
Fee owned U A	Fee owned U A	Fee owned U A P	Fee owned U A A A

PF01 HELP  
PF07 BKWD

PF02  
PF08 FWD

PF03 EXIT  
PF09 PRINT

PF04 GoTo  
PF10 SDIV

PF05  
PF11

PF06  
PF12

CMD :  
OG5SECT

ONGARD  
INQUIRE LAND BY SECTION

01/30/01 10:06:21  
OGOMES -TPME  
PAGE NO: 2

Sec : 08 Twp : 23S Rng : 37E Section Type : NORMAL

L 40.00	K 40.00	J 40.00	I 40.00
Fee owned U A	Fee owned U	Fee owned U	Fee owned U A
M 40.00	N 40.00	O 40.00	P 40.00
Fee owned P	Fee owned U A	Fee owned U A	Fee owned U A

PF01 HELP  
PF07 BKWD

PF02  
PF08 FWD

PF03 EXIT  
PF09 PRINT

PF04 GoTo  
PF10 SDIV

PF05  
PF11

PF06  
PF12

CMD :  
OG6IWCM

ONGARD  
INQUIRE WELL COMPLETIONS

01/30/01 10:06:49  
OGOMES -TPME

API Well No : 30 25 34105 Eff Date : 08-25-1997 WC Status : A  
Pool Idn : 58595 TEAGUE;GLORIETA-UPPER PADDOCK, SW  
OGRID Idn : 22351 TEXACO EXPLORATION & PRODUCTION INC  
Prop Idn : 13195 F B DAVIS

Well No : 006  
GL Elevation: 3325

	U/L	Sec	Township	Range	North/South	East/West	Prop/Act (P/A)
	---	---	-----	-----	-----	-----	-----
B.H. Locn	:	B	8	23S	37E	FTG 510 F N FTG 1350 F E	A
Lot Identifier:							
Dedicated Acre:						40.00	
Lease Type	:					P	
Type of consolidation						(Comm, Unit, Forced Pooling - C/U/F/O)	:

M0025: Enter PF keys to scroll

PF01 HELP	PF02	PF03 EXIT	PF04 GoTo	PF05	PF06
PF07	PF08	PF09	PF10 NEXT-WC	PF11 HISTORY	PF12 NXTREC

CMD :  
OG6IWCM

ONGARD  
INQUIRE WELL COMPLETIONS

01/30/01 10:07:18  
OGOMES -TPME

API Well No : 30 25 35028 Eff Date : 06-29-2000 WC Status : A  
Pool Idn : 96313 TEAGUE;DRINKARD-ABO, NORTH  
OGRID Idn : 22351 TEXACO EXPLORATION & PRODUCTION INC  
Prop Idn : 13195 F B DAVIS

Well No : 008  
GL Elevation: 3327

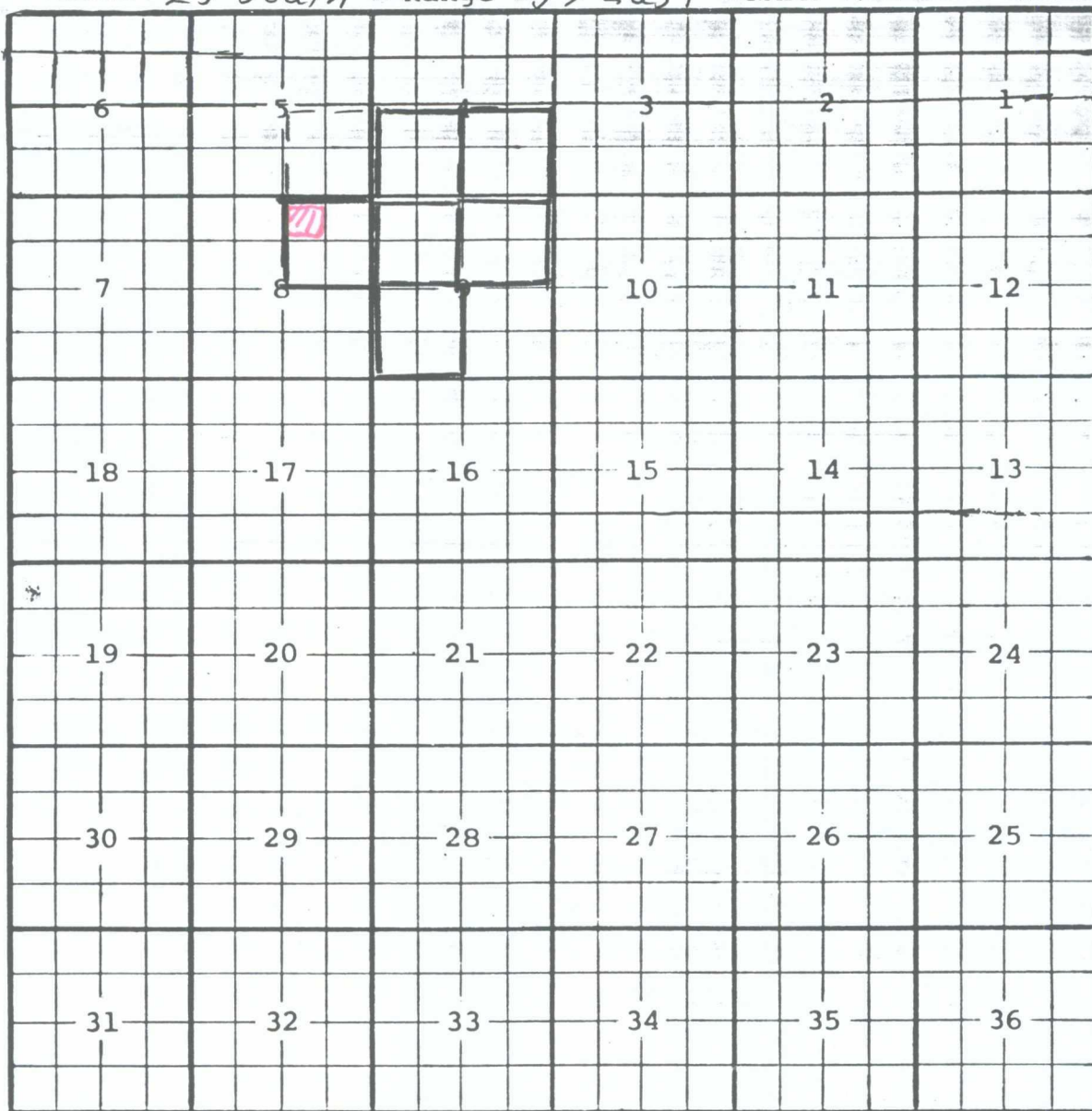
	U/L	Sec	Township	Range	North/South	East/West	Prop/Act (P/A)
B.H. Locn	: B	8	23S	37E	FTG 960 F N	FTG 2245 F W	A
Lot Identifier:							
Dedicated Acre:							40.00
Lease Type							: P
Type of consolidation (Comm, Unit, Forced Pooling - C/U/F/O)							:

E6317: No more recs. for this api well no.

PF01 HELP	PF02	PF03 EXIT	PF04 GoTo	PF05	PF06
PF07	PF08	PF09	PF10 NEXT-WC	PF11 HISTORY	PF12 NXTREC

County Lea Pool North Teague-Lower Paddock-Blinebry Assoc.

TOWNSHIP 23 South Range 37 East NMPM



Description: NW/4 Sec. 9 (R-9646, 3-11-92)

Extend vertical limits to include Lower Paddock formation and redesignate as North Teague Lower Paddock-Blinebry Gas Pool (R-9937, 8-17-93)

Ext: NE/4 Sec. 9 (R-10091, 3-28-94)

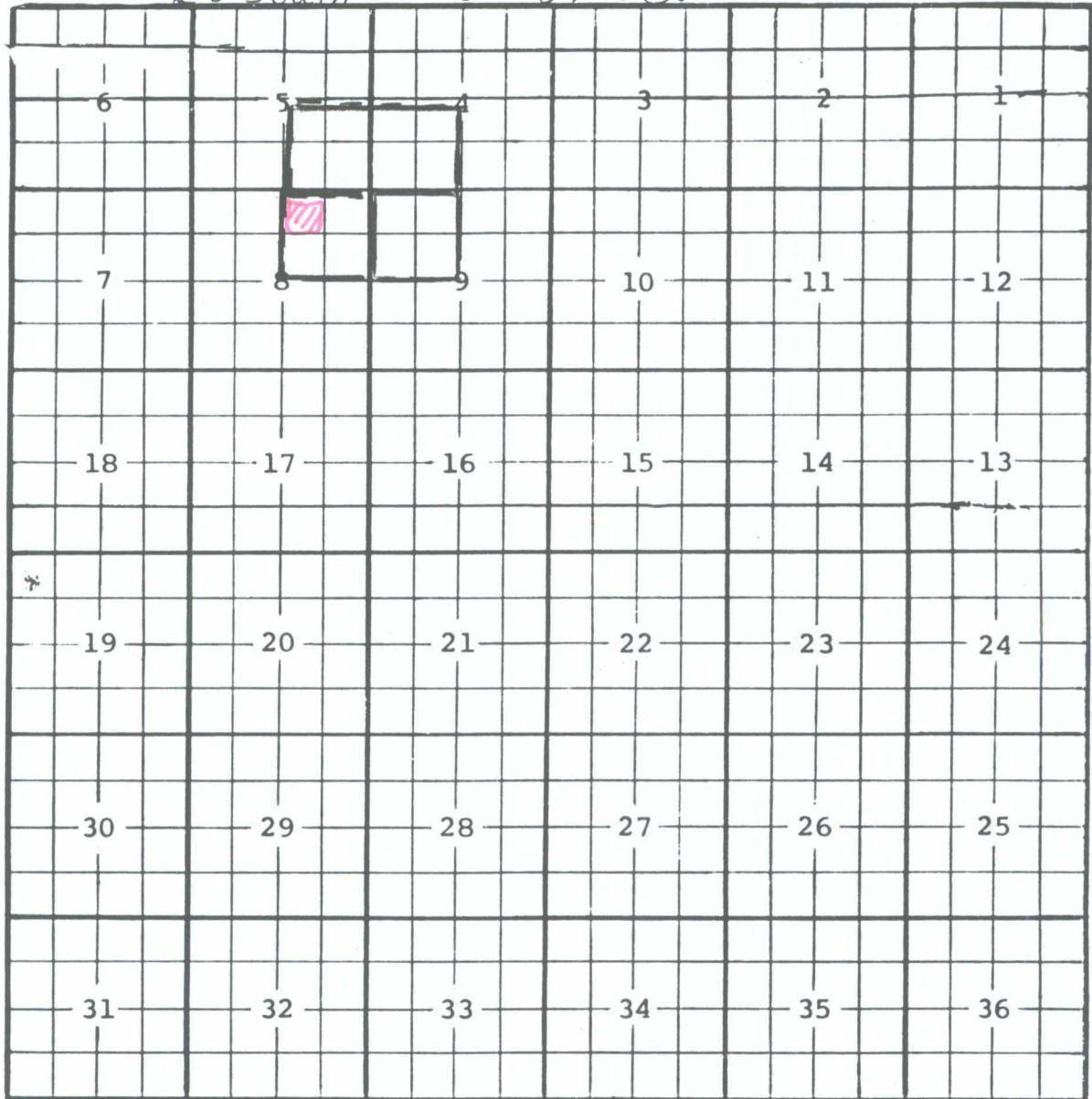
Redesignate as North Teague Lower Paddock-Blinebry Associated Pool and Ext: NE/4 Sec. 8, SW/4 Sec. 9 (R-5353-Q, 9-26-94)

Ext: SW/4 Sec. 4 (R-10342, 4-24-95) Ext: SE/4 Sec. 4 (R-10556, 3-11-96)



County Lea Pool Southwest Teague Glorieta-Upper Paddock

TOWNSHIP 23 South Range 37 East NMPM



Description: NW 1/4 Sec. 9 (A-9937, 8-12-93)

Ext: NE 1/4 Sec. 8 (A-10091, 3-28-94) Ext: NW 1/4 Sec. 4, SE 1/4 Sec. 5 (R-10556, 3-11-96)