

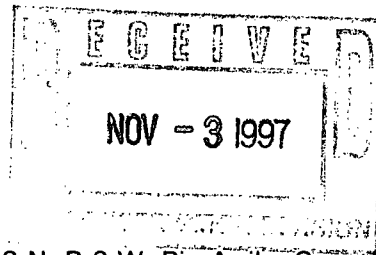
NSL 11/24/97

# BURLINGTON RESOURCES

SAN JUAN DIVISION

October 31, 1997

Mr. William LeMay  
New Mexico Oil Conservation Division  
2040 South Pacheco  
Santa Fe, New Mexico 87505



Re: San Juan 28-6 Unit #210M  
1685'FNL, 900'FWL Section 31, T-28-N, R-6-W, Rio Arriba County, New Mexico  
API # 30-039-not assigned

Dear Mr. LeMay:

Burlington Resources is applying for administrative approval of an unorthodox "infill" gas well location for both the Mesa Verde and Dakota pools. This application for the referenced location is due to terrain, the presence of archaeology, and at the request of the Bureau of Land Management. We have received Order DHC-1692 for commingling these pools.

Production from the Blanco Mesa Verde pool is to be included in an existing 268.99 gas spacing and proration unit comprising the W/2 of said Section 31 which is currently dedicated to Burlington Resources' San Juan 28-6 Unit #17 (API 30-039-07236), located at a standard gas well location of 1555'FSL, 825'FWL (Unit L) of said Section 31. Production from the Basin Dakota pool is to be included in an existing 334.79 gas spacing and proration unit comprising Lot 4, SE/4 of the SW/4 of Section 30, plus Lots 1, 2, 3, 4, and 5, the NE/4 of the SW/4 and the E/2 of the NW/4 of said Section 31 which is currently dedicated to Burlington Resources' San Juan 28-6 Unit #210 (API 30-039-20841), located at a standard gas well location of 1850'FSL, 1190'FWL of said Section 31 (Unit K). Attached is Order R-2948 dated August 16, 1965 and Order R-2948-A dated February 11, 1969 covering the non-standard gas proration units.

We had previously submitted this application, and so are re-applying to include the following information. Attached is a plat from our computer mapping system showing the well in reference to the interior boundary at an approximate distance of 50'; also attached is a map for the San Juan 28-6 Unit, showing the placement of this well relative to the unit boundaries and participating areas.

The following attachments are for your review:

1. Application for Permit to Drill.
2. Completed C-102 at referenced location.
3. Offset operators/owners plat.
4. 7.5 minute topographic map showing the orthodox windows, and enlargement of the map to define topographic features.
5. Map from archaeological report showing sites.

We appreciate your earliest reconsideration of this application.

Sincerely,

A handwritten signature in dark ink, appearing to read "Peggy Bradfield". The signature is fluid and cursive.


Peggy Bradfield

Regulatory/Compliance Administrator

xc: NMOCD - Aztec District Office and Bureau of Land Management - Farmington

UNITED STATES  
DEPARTMENT OF THE INTERIOR  
BUREAU OF LAND MANAGEMENT

APPLICATION FOR PERMIT TO DRILL, DEEPEN, OR PLUG BACK

1a. Type of Work DRILL	5. Lease Number SF-080430A Unit Reporting Number 891001051B - Dk 8910010510 - MV	
1b. Type of Well GAS	6. If Indian, All. or Tribe	
2. Operator <b>BURLINGTON RESOURCES</b> Oil & Gas Company	7. Unit Agreement Name San Juan 28-6 Unit	
3. Address & Phone No. of Operator PO Box 4289, Farmington, NM 87499  (505) 326-9700	8. Farm or Lease Name San Juan 28-6 Unit 9. Well Number 210M	
4. Location of Well 1685' FNL, 900' FWL  Latitude 36° 37.2, Longitude 107° 30.7	10. Field, Pool, Wildcat Blanco Mesa Verde/ Basin Dakota 11. Sec., Twn, Rge, Mer. (NMPM) Sec 31, T-28-N, R-6-W API # 30-039-	
14. Distance in Miles from Nearest Town 6 miles to Gobernador	12. County Rio Arriba	13. State NM
15. Distance from Proposed Location to Nearest Property or Lease Line 900'		
16. Acres in Lease	17. Acres Assigned to Well 334.79; 268.99 W/2	
18. Distance from Proposed Location to Nearest Well, Drlg, Compl, or Applied for on this Lease 1500'		
19. Proposed Depth 7811'	20. Rotary or Cable Tools Rotary	
21. Elevations (DF, FT, GR, Etc.) 6579' GR	22. Approx. Date Work will Start	
23. Proposed Casing and Cementing Program See Operations Plan attached		
24. Authorized by:  Regulatory/Compliance Administrator	7-11-97 Date	

PERMIT NO. \_\_\_\_\_ APPROVAL DATE \_\_\_\_\_

APPROVED BY \_\_\_\_\_ TITLE \_\_\_\_\_ DATE \_\_\_\_\_

Archaeological Report to be submitted by Arboles Contract Archaeology

Threatened and Endangered Species Report to be submitted

NOTE: This format is issued in lieu of U.S. BLM Form 3160-3

District I  
PO Box 1980, Hobbs, NM 88241-1980

District II  
PO Drawer 00, Artesia, NM 88211-0719

District III  
1000 Rio Brazos Rd., Aztec, NM 87410

District IV  
PO Box 2088, Santa Fe, NM 87504-2088

State of New Mexico  
Energy, Minerals & Natural Resources Department

OIL CONSERVATION DIVISION  
PO Box 2088  
Santa Fe, NM 87504-2088

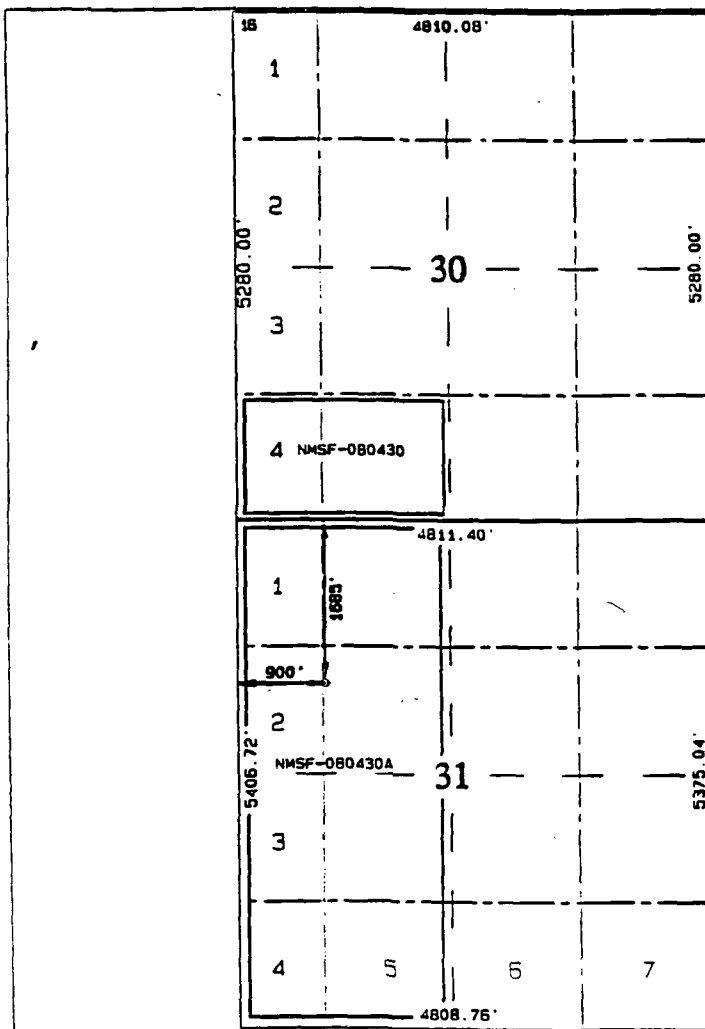
Revised February  
Instructions  
Submit to Appropriate District  
State Lease -  
Fee Lease -

☐ AMENDED

WELL LOCATION AND ACREAGE DEDICATION PLAT

API Number 30-039-		Pool Code 72319/71599		Pool Name Blanco Mesaverde/Basin Dakota					
Property Code 7462		Property Name San Juan 28-6 Unit			Well No. 210				
GRID No. 14538		Operator Name BURLINGTON RESOURCES OIL & GAS COMPANY			Elev 657				
10 Surface Location									
UL or lot no. F	Section 31	Township 28N	Range 6W	Lot Idn	Feet from the 1685	North/South line North	Feet from the 900	East/West line West	Rio
11 Bottom Hole Location If Different From Surface									
Dedicated Acres MV-W 268.99 DK- 334.79		Type of Infill		Consolidation Code		Order No.			

NO ALLOWABLE WILL BE ASSIGNED TO THIS COMPLETION UNTIL ALL INTERESTS HAVE BEEN CONSIDERED OR A NON-STANDARD UNIT HAS BEEN APPROVED BY THE DIVISION



17 OPERATOR CERTIFICATE  
I hereby certify that the information herein is true and complete to the knowledge and belief

*Peggy Bradfield*  
Signature

Peggy Bradfield

Printed Name

Regulatory Administrator  
Title

7-11-97

Date

18 SURVEYOR CERTIFICATE  
I hereby certify that the well on this plat was plotted from actual surveys made by me or under my supervision, and that the same is correct to the best of my belief

6/10/97

Date of Survey

Signature

NEW MEXICO  
6857

6857

Certificate Number

OPERATIONS PLAN

Well Name: San Juan 28-6 Unit #210M  
Location: 1685'FNL, 900'FWL Sec 31, T-28-N, R-6-W  
 Rio Arriba County, NM  
 Latitude 36° 37.2, Longitude 107° 30.7  
Formation: Blanco Mesa Verde/Basin Dakota  
Elevation: 6579'GL

<u>Formation Tops:</u>	<u>Top</u>	<u>Bottom</u>	<u>Contents</u>
Surface	San Jose	2526'	
Ojo Alamo	2526'	2893'	aquifer
Fruitland	2893'	3298'	gas
Pictured Cliffs	3298'	3411'	gas
Lewis	3411'	3771'	gas
Intermediate TD	3511'		
Mesa Verde	3771'	4231'	gas
Chacra	4231'	4931'	
Massive Cliff House	4931'	5076'	gas
Menefee	5076'	5486'	gas
Massive Point Lookout	5486'	6711'	gas
Gallup	6711'	7456'	gas
Greenhorn	7456'	7561'	gas
Graneros	7561'	7373'	gas
Dakota	7673'		gas
TD (4 1/2" liner)	7811'		

Logging Program:

Cased hole - CBL - TD to 200' above TOC, GR/CNL across MV/Dk

Mud Program:

<u>Interval</u>	<u>Type</u>	<u>Weight</u>	<u>Vis.</u>	<u>Fluid Loss</u>
0- 200'	Spud	8.4-9.0	40-50	no control
200-3511'	LSND	8.4-9.0	30-60	no control
3511-7811'	Gas	n/a	n/a	n/a

Pit levels will be visually monitored to detect gain or loss of fluid control.

Casing Program (as listed, the equivalent, or better):

<u>Hole Size</u>	<u>Depth Interval</u>	<u>Csq. Size</u>	<u>Wt.</u>	<u>Grade</u>
12 1/4"	0' - 200'	9 5/8"	32.3#	WC-50
8 3/4"	0' - 3511'	7"	20.0#	J-55
6 1/4"	3411' - 6855'	4 1/2"	10.5#	J-55
6 1/4"	6855' - 7811'	4 1/2"	11.6#	J-55

Tubing Program:

0' - 7811'      2 3/8"      4.70# EUE

BOP Specifications, Wellhead and Tests:

**Surface to Intermediate TD -**

11" 2000 psi minimum double gate BOP stack (Reference Figure #1). After nipple-up prior to drilling out surface casing, rams and casing will be tested to 600 psi for 30 minutes.

**Intermediate TD to Total Depth -**

11" 2000 psi minimum double gate BOP stack (Reference Figure #1). After nipple-up prior to drilling out intermediate casing, rams and casing will be tested to 1500 psi for 30 minutes.

**Surface to Total Depth -**

2" nominal, 2000 psi minimum choke manifold (Reference Figure #3).

**Completion Operations -**

7 1/16" 2000 psi double gate BOP stack (Reference Figure #2). After nipple-up prior to completion, pipe rams, casing and liner top will be tested to 2000 psi for 15 minutes.

**Wellhead -**

9 5/8" x 7" x 2 3/8" x 3000 psi tree assembly.

**General -**

- Pipe rams will be actuated once each day and blind rams will be actuated once each trip to test proper functioning.
- An upper kelly cock valve with handle available and drill string valves to fit each drill string will be available on the rig floors at all times.
- BOP pit level drill will be conducted weekly for each drilling crew.
- All BOP tests and drills will be recorded in daily drilling reports.
- Blind and pipe rams will be equipped with extension hand wheels.

Cementing:

9 5/8" surface casing - cement with 163 sx Class "B" cement with 1/4# flocele/sx and 2% calcium chloride (188 cu.ft. of slurry, 200% excess to circulate to surface). WOC 12 hrs. Test casing to 600 psi for 30 minutes.

Saw tooth guide shoe on bottom. Bowspring centralizers will be run in accordance with Onshore Order #2.

**7" intermediate casing -**

Lead w/283 sx Class "B" w/3% medisilicate, 10# gilsonite/sx and 1/2# flocele/sx. Tail w/90 sx 50/50 Class "B" Poz w/2% calcium chloride, 2% gel, 1/2# flocele/sx and 10# gilsonite/sx (924 cu.ft. of slurry, 75% excess to circulate to surface.) WOC minimum of 12 hours before drilling out intermediate casing. If cement does not circulate to surface, a CBL will be run during completion operations to determine TOC. Test casing to 1500 psi for 30 minutes.

Cement nose guide shoe on bottom with float collar spaced on top of shoe joint. Bowspring centralizers spaced every other joint off bottom, to the base of the Ojo Alamo at 2893'. Two turbolating centralizers at the base of the Ojo Alamo at 2893'. Bowspring centralizers spaced every fourth joint from the base of the Ojo Alamo to the base of the surface casing.

#### 4 1/2" Production Liner -

Cement to cover minimum of 100' of 4 1/2" x 7" overlap. Lead with 106 sx 65/35 Class "B" poz with 6% gel, 5# gilsonite/sx and 1/4# flocele/sx. Tail with 310 sx 50/50 Class "B" Poz with 2% gel, 1/4# flocele/sx, 5# gilsonite/sx, and 0.4% fluid loss additive (609 cu.ft., 35% excess to cement 4 1/2" x 7" overlap). WOC a minimum of 18 hrs prior to completing.

Cement float shoe on bottom with float collar spaced on top of shoe joint.

Note: To facilitate higher hydraulic stimulation completion work, no liner hanger will be used. In its place, a long string of 4 1/2" casing will be run and cemented with a minimum of 100' of cement overlap between the 4 1/2" x 7" casing strings. After completion of the well, a 4 1/2" retrievable bridge plug will be set below the top of cement in the 4 1/2" x 7" overlap. The 4 1/2" casing will then be backed off above the top of cement in the 4 1/2" x 7" overlap and laid down. The liner top can then be pressure tested to ensure a seal between the liner top and the 7" casing has been achieved. The test pressure shall be the maximum anticipated pressure to which the seal will be exposed (700 psi for the Mesa Verde and 2500 psi for the Dakota). The 4 1/2" bridge plug will then be retrieved and the production tubing will be run to produce the well.

- If hole conditions permit, an adequate water spacer will be pumped ahead of each cement job to prevent cement/ mud contamination or cement hydration.
- The pipe will be rotated and/or reciprocated, if hole conditions permit.

#### Special Drilling Operations (Gas/Mist Drilling):

The following equipment will be operational while gas/mist drilling:

- An anchored blooie line will be utilized to discharge all cuttings and circulating medium to the blow pit a minimum of 100' from the wellhead.
- The blooie line will be equipped with an automatic igniter or pilot light.
- Compressors will be located a minimum of 100' from the wellhead in the opposite direction from the blooie line.
- Engines will have spark arresters or water cooled exhaust.
- Deduster equipment will be utilized.
- The rotating head will be properly lubricated and maintained.
- A float valve will be utilized above the bit.
- Mud circulating equipment, water, and mud materials will be sufficient to maintain control of the well.

Additional Information:

- The Dakota and Mesa Verde formations will be completed and commingled.
- No abnormal temperatures or hazards are anticipated.
- Anticipated pore pressures are as follows:

Fruitland Coal	800 psi
Pictured Cliffs	800 psi
Mesa Verde	700 psi
Dakota	2500 psi
- Sufficient LCM will be added to the mud system to maintain well control, if lost circulation is encountered.
- The west half is dedicated to the Mesa Verde and Dakota in this well.
- This gas is dedicated.

San Joaquin  
Drilling Engineer

7/14/97  
Date

# ***BURLINGTON RESOURCES***

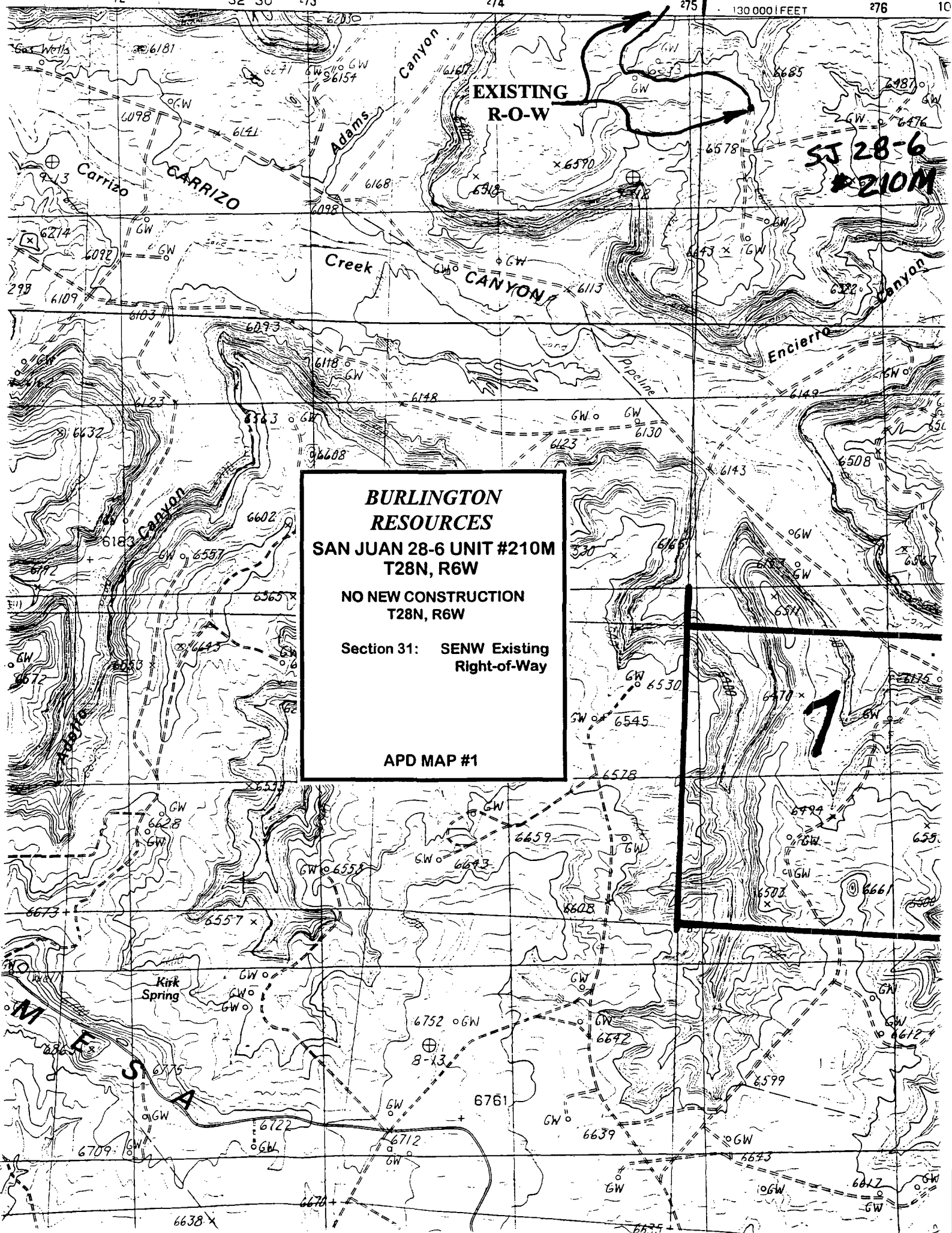
San Juan 28-6 Unit #210M  
Multi-Point Surface Use Plan

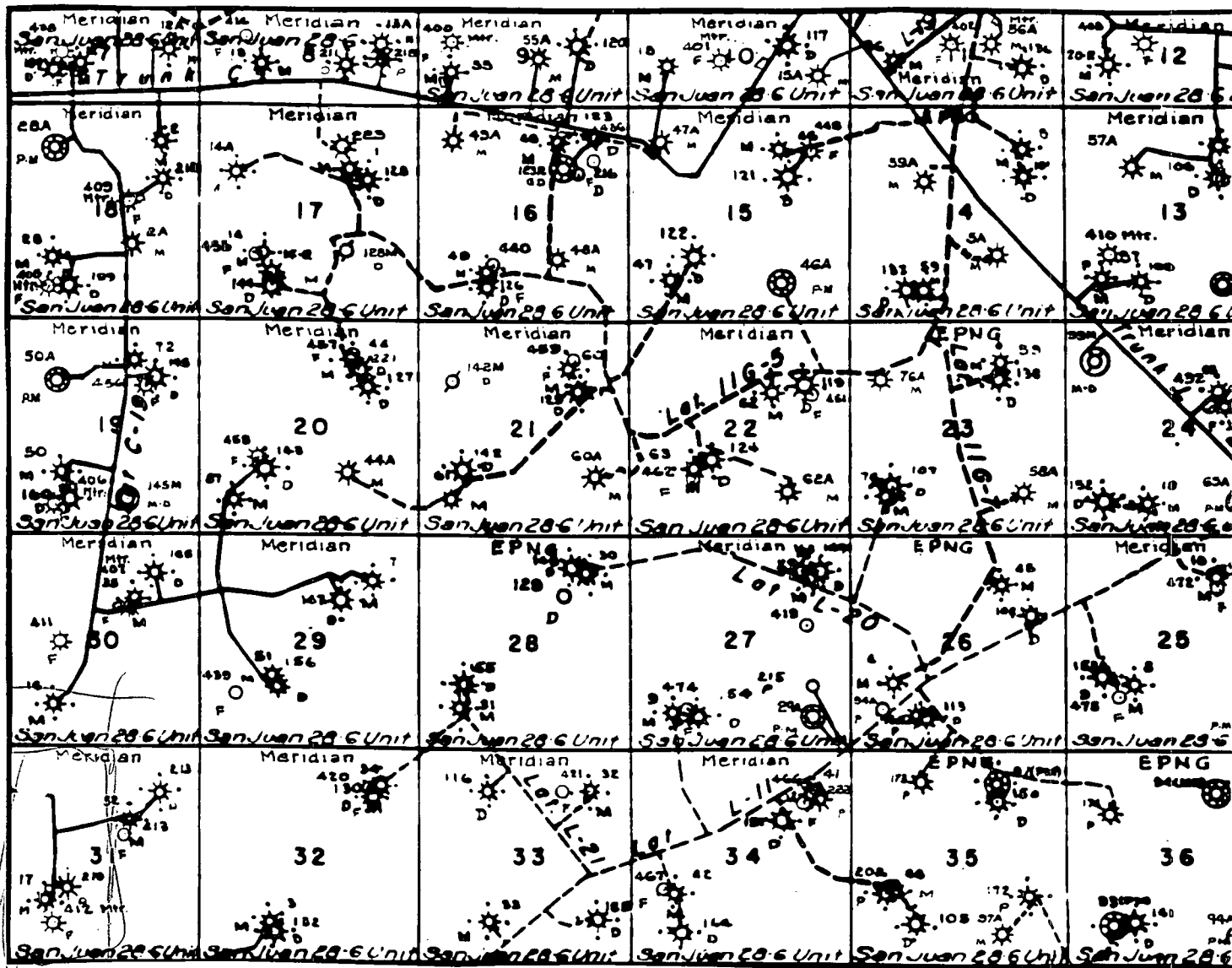
1. Existing Roads - Refer to Map No. 1. Existing roads used to access the proposed location will be properly maintained for the duration of the project. Bureau of Land Management right-of-way has been applied for as shown on Map No. 1.
2. Planned Access Road - Refer to Map No. 1 - None required.
3. Location of Existing Wells - Refer to Map No. 1A.
4. Location of Existing and/or Proposed Facilities if Well is Productive -
  - a. On the Well Pad - Refer to Plat No. 1, anticipated production facilities plat.
  - b. Off the Well Pad - Anticipated pipeline facilities as shown on the attached plat from El Paso Field Service.
5. Location and Type of Water Supply - Water will be hauled by truck for the proposed project and will be obtained from San Juan 28-6 Water Well located SW/4 Section 23, T-28-N, R-6-W, New Mexico
6. Source of Construction Materials - If construction materials are required for the proposed project, such materials will be obtained from a commercial quarry.
7. Methods of Handling Waste Materials - All garbage and trash materials will be removed from the site for proper disposal. A portable toilet will be provided for human waste and serviced in a proper manner. If liquids are left in the reserve pit after completion of the project, the pit will be fenced until the liquids have had adequate time to dry. The location clean-up will not take place until such time as the reserve pit can be properly covered over to prevent run-off from carrying waste materials into the watershed. Reserve pits will be lined as needed with either 12 mil bio-degradable plastic liner or a bentonite liner. All earthen pits will be so constructed as to prevent leakage from occurring; no earthen pit will be located on natural drainage. Generation of hazardous waste is not anticipated. Federal regulations will be adhered to regarding handling and disposal of such waste if so generated.
8. Ancillary Facilities - None anticipated.
9. Wellsite Layout - Refer to the location diagram and to the wellsite cut and fill diagram (Figure No. 4). The blow pit will be constructed with a 2'/160' grade to allow positive drainage to the reserve pit and prevent standing liquids in the blow pit.



10. Plans for Restoration of the Surface - After completion of the proposed project, the location will be cleaned and leveled. The location will be left in such a condition that will enable reseeded operations to be carried out. Seed mixture as designated by the responsible government agency will be used. The reseeded operations will be performed during the time period set forth by the responsible government agency. The permanent location facilities will be painted as designated by the responsible government agency.
11. Surface Ownership - Bureau of Land Management
12. Other Information - Environmental stipulations as outlined by the responsible government agency will be adhered to. Refer to the archaeological report for a description of the topography, flora, fauna, soil characteristics, dwellings, historical and cultural sites.
13. Operator's Representative and Certification - Burlington Resources Oil & Gas Company Regional Drilling Manager, Post Office Box 4289, Farmington, NM 87499, telephone (505) 326-9700. I hereby certify that I, or persons under my direct supervision, have inspected the proposed drill site and access route; that I am familiar with the conditions which presently exist; that the statements made in this plan, are to the best of my knowledge, true and correct; and that the work associated with the operations proposed herein will be performed by Burlington Resources Oil and Gas Company and its contractors and subcontractors in conformity with this plan and the terms and conditions under which it is approved.

  
Regulatory/Compliance Administrator Date



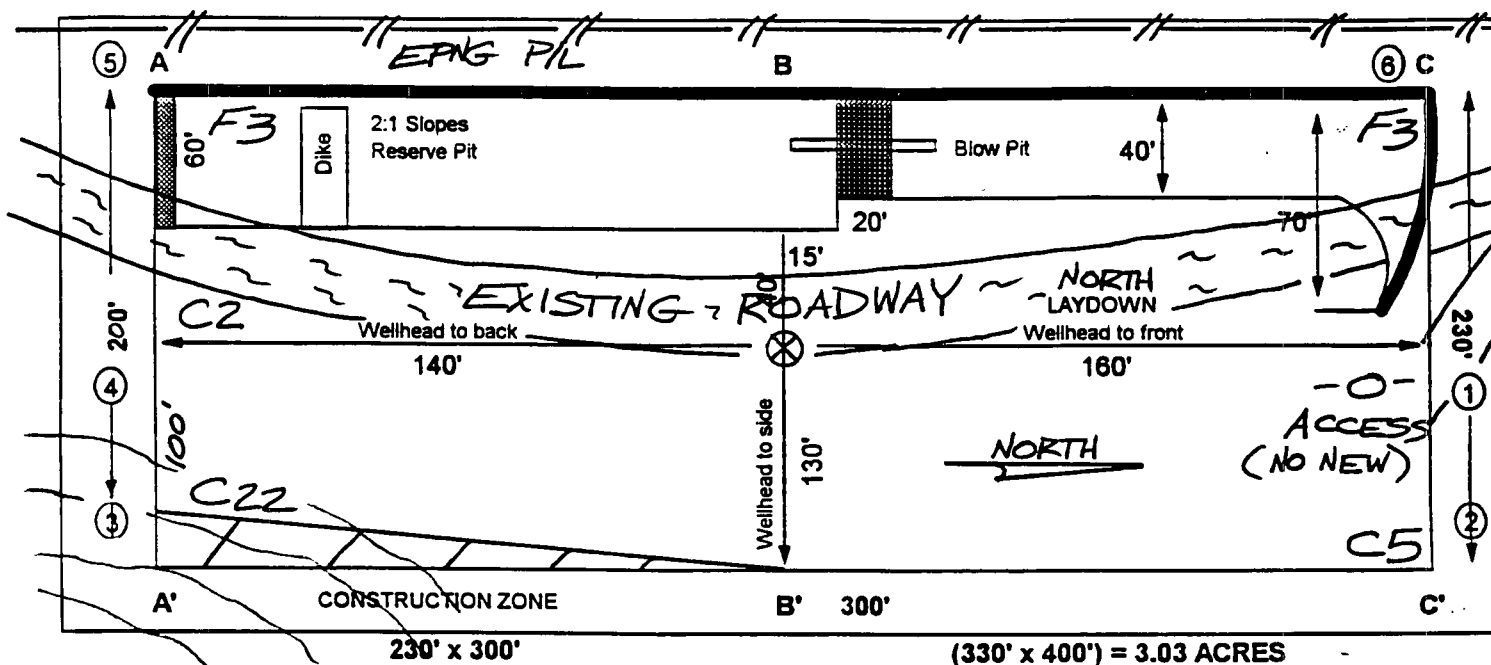


MERIDIAN OIL INC.  
 Pipeline Map  
 T-28-N, R-06-W  
 San Juan County, New Mexico  
 San Juan 28-6 Unit #210M  
 Map 1A

# BURLINGTON RESOURCES

PLAT #1

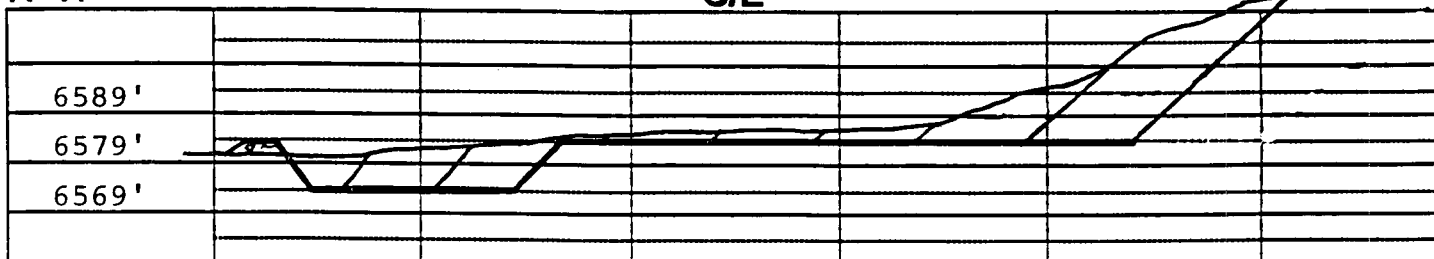
NAME: San Juan 28-6 Unit #210M  
 FOOTAGE: 1685' FNL, 900' FWL,  
 SEC 31 TWN 28N N.R. 6W W NMPM  
 CO: Rio Arriba ST: New Mexico  
 ELEVATION: 6579' DATE: 6/10/97



Reserve Pit Dike: to be 8' above Deep side (overflow - 3' wide and 1' above shallow side).  
 Blow Pit: overflow pipe halfway between top and bottom and to extend over plastic liner and into blow pit.

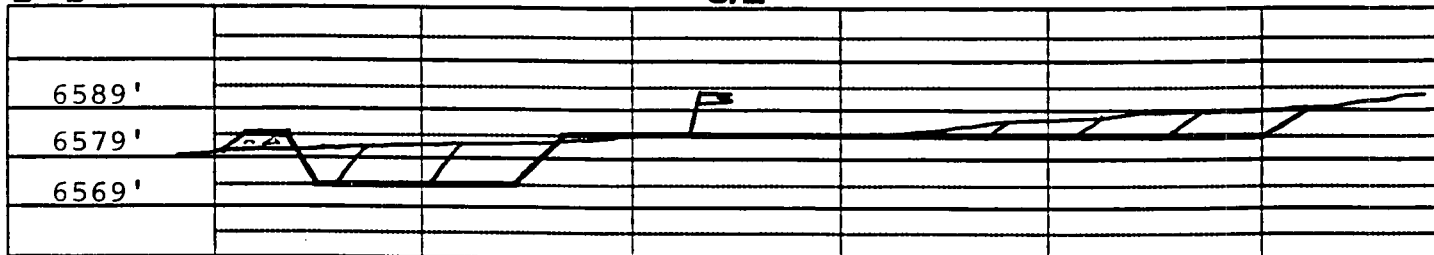
A - A'

C/L



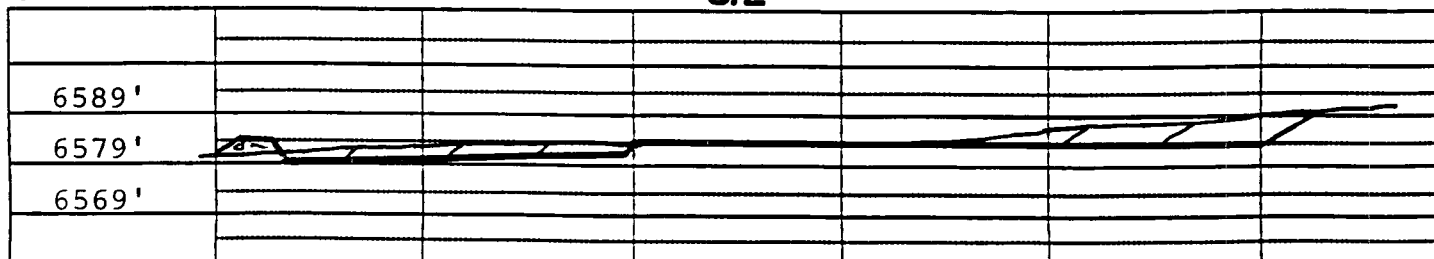
B - B'

C/L



C - C'

C/L

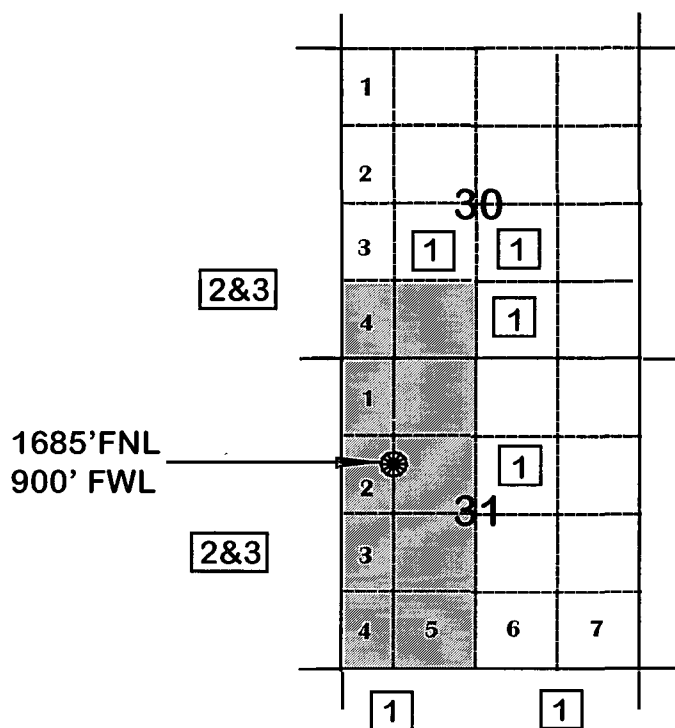


Note: Contractor should call One-Call for location of any marked or unmarked buried pipelines or cable on well pad and/or access road at least two (2) working days prior to construction.

**SAN JUAN 28-6 UNIT #210M**

## Mesaverde / Dakota Formations Well

**Township 28 North, Range 6 West**



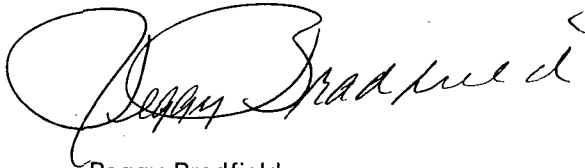
- 1) **Burlington Resources Oil and Gas Company.**
- 2) **Amoco Production Company**  
**Bruce Zimney**  
**1670 Broadway**  
**P. O. Box 800**  
**Denver, Colorado 80201**
- 3) **Conoco**  
**10 Desta Drive, Suite 100W**  
**Midland, Texas 79705-4500**

Re: San Juan 28-6 Unit #210M  
1685'FNL, 900'FWL, Section 31, T-28-N, R-6-W, Rio Arriba County  
API # 30-039-not yet assigned

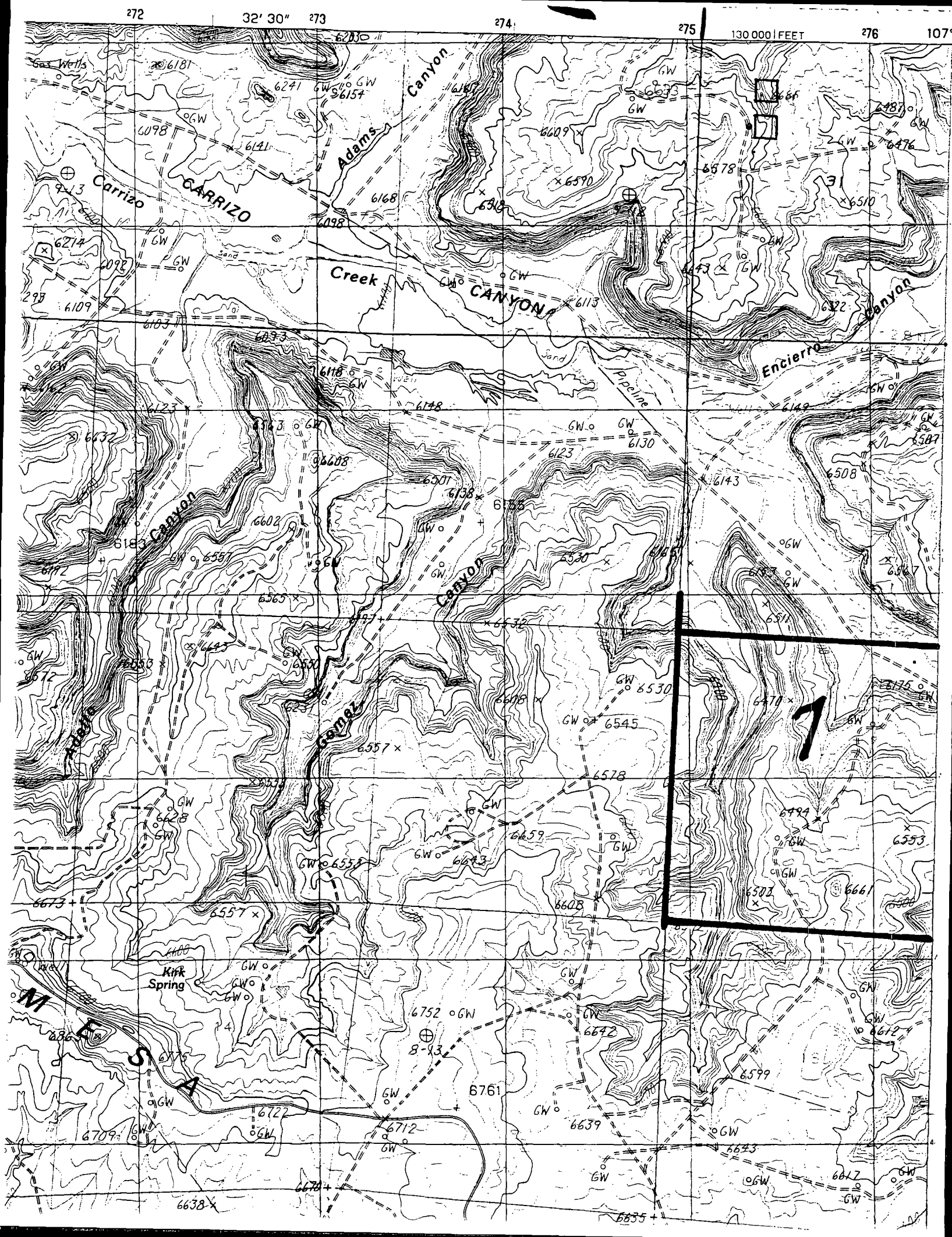
I hereby certify that the following offset operators/owners have been mailed notification of our application for non-standard location to drill the referenced well.

Amoco Production  
Att: Bruce Zimney  
PO Box 800  
Denver, CO 80201

Conoco Inc.  
10 Desta Drive, Suite 100W  
Midland, TX 79705-4500

A handwritten signature in black ink, appearing to read "Peggy Bradfield", with a small mark to the right.

Peggy Bradfield  
Regulatory/Compliance Administrator



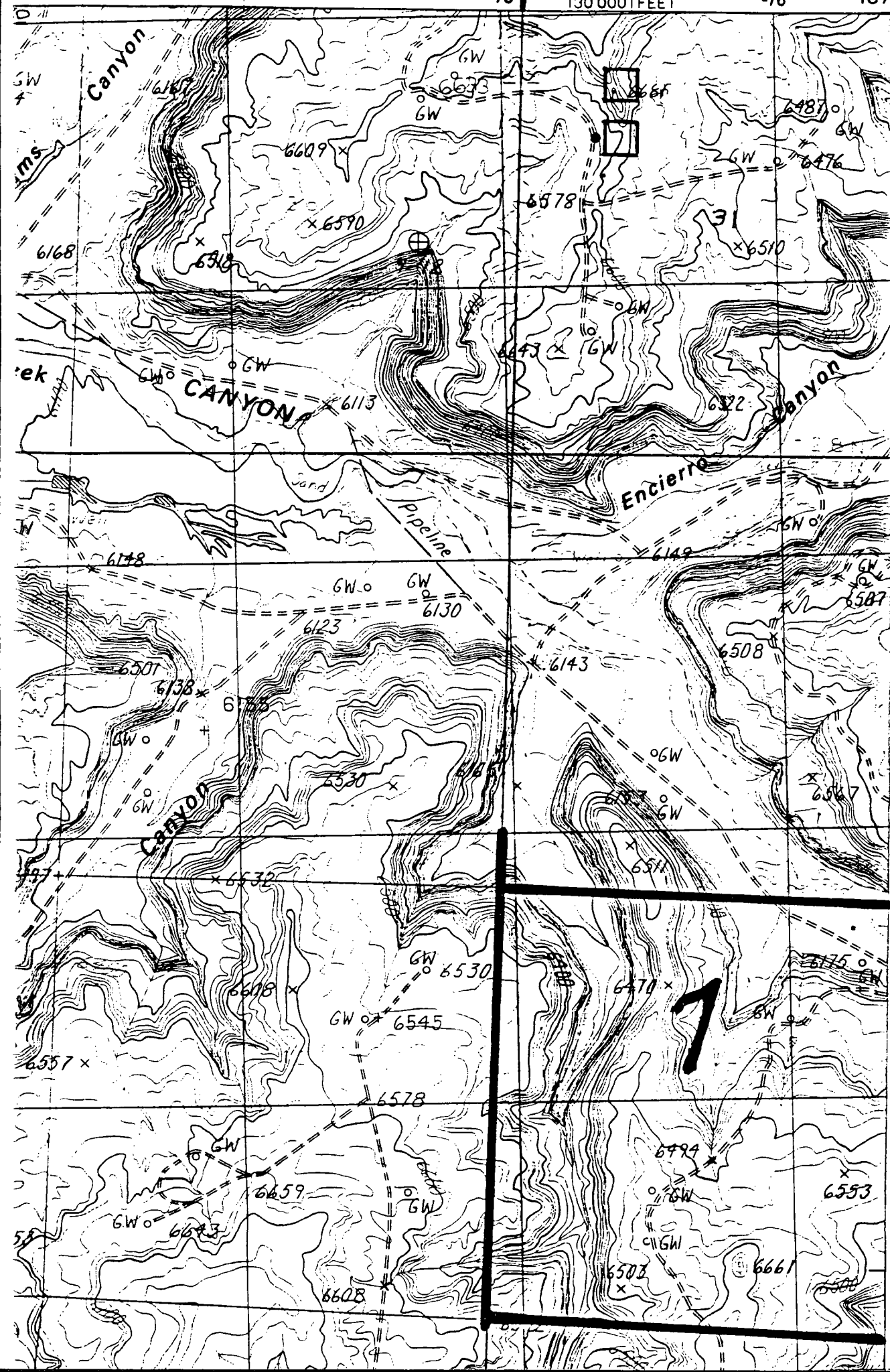
274

275

130 000 FEET

276

107°





BEFORE THE OIL CONSERVATION COMMISSION  
OF THE STATE OF NEW MEXICO

IN THE MATTER OF THE HEARING  
CALLED BY THE OIL CONSERVATION  
COMMISSION OF NEW MEXICO FOR  
THE PURPOSE OF CONSIDERING:

CASE No. 4042  
Order No. R-2948-A

APPLICATION OF EL PASO NATURAL GAS  
COMPANY FOR AN AMENDMENT TO ORDER  
NO. R-2948, RIO ARriba COUNTY, NEW  
MEXICO.

ORDER OF THE COMMISSION

BY THE COMMISSION:

This cause came on for hearing at 9 a.m. on February 5, 1969,  
at Santa Fe, New Mexico, before Examiner Daniel S. Nutter.

NOW, on this 11th day of February, 1969, the Commission, a  
quorum being present, having considered the testimony, the record,  
and the recommendations of the Examiner, and being fully advised  
in the premises,

FINDS:

(1) That due public notice having been given as required by  
law, the Commission has jurisdiction of this cause and the subject  
matter thereof.

(2) That by Order No. R-2948, dated August 16, 1965, the  
Commission approved several non-standard gas proration units in  
the Basin-Dakota Gas Pool, Rio Arriba County, New Mexico, among  
them the following:

TOWNSHIP 28 NORTH, RANGE 6 WEST, NMPM

Unit	Acres	Description
12	325.59	Section 33: W/2
13	325.02	Section 33: E/2

-2-

CASE No. 4042

Order No. R-2948-A

TOWNSHIP 28 NORTH, RANGE 7 WEST, NMPM

Unit	Acres	Description
16	324.70	Section 35: W/2
17	327.70	Section 35: E/2

(3) That the applicant, El Paso Natural Gas Company, now seeks amendment of Order No. R-2948 to change the acreage dedication comprising the above-described non-standard gas proration units to comprise the following acreage:

TOWNSHIP 28 NORTH, RANGE 6 WEST, NMPM

Unit	Acres	Description
12	320	Section 33: N/2
13	330.71	Section 33: S/2

TOWNSHIP 28 NORTH, RANGE 7 WEST, NMPM

Unit	Acres	Description
16	320	Section 35: N/2
17	332.40	Section 35: S/2

(4) That the N/2 of said Section 33 has been admitted to the participating area for the Dakota formation of the San Juan 28-6 Unit.

(5) That the S/2 of said Section 35 has been admitted to the participating area for the Dakota formation of the San Juan 28-7 Unit.

(6) That each participating area should coincide with a proration unit.

(7) That approval of the subject application will allow each of the aforesaid participating areas to coincide with a proration unit and will afford the applicant the opportunity

to produce its just and equitable share of the gas in the Basin-Dakota Gas Pool and will otherwise prevent waste and protect correlative rights.

IT IS THEREFORE ORDERED:

(1) That Order No. R-2948, dated August 16, 1965, is hereby amended by deleting therefrom the following-described non-standard gas proration units in the Basin-Dakota Gas Pool, Rio Arriba County, New Mexico:

TOWNSHIP 28 NORTH, RANGE 6 WEST, NMPM

Unit	Acres	Description
12	325.59	Section 33: W/2
13	325.02	Section 33: E/2

TOWNSHIP 28 NORTH, RANGE 7 WEST, NMPM

Unit	Acres	Description
16	324.70	Section 35: W/2
17	327.70	Section 35: E/2

and substituting in lieu thereof the following-described gas proration units:

TOWNSHIP 28 NORTH, RANGE 6 WEST, NMPM

Unit	Acres	Description
12	320	Section 33: N/2
13	330.71	Section 33: S/2

TOWNSHIP 28 NORTH, RANGE 7 WEST, NMPM

Unit	Acres	Description
16	320	Section 35: N/2
17	332.40	Section 35: S/2

-4-

CASE No. 4042

Order No. R-2948-A

(2) That jurisdiction of this cause is retained for the entry of such further orders as the Commission may deem necessary.

DONE at Santa Fe, New Mexico, on the day and year hereinabove designated.

STATE OF NEW MEXICO  
OIL CONSERVATION COMMISSION

DAVID F. CARGO, Chairman

ALEX J. ARMIJO, Member

A. L. PORTER, Jr., Member & Secretary

S E A L

esr/

BEFORE THE OIL CONSERVATION COMMISSION  
OF THE STATE OF NEW MEXICO

IN THE MATTER OF THE HEARING  
CALLED BY THE OIL CONSERVATION  
COMMISSION OF NEW MEXICO FOR  
THE PURPOSE OF CONSIDERING:

CASE No. 3272  
Order No. R-2948

APPLICATION OF EL PASO NATURAL GAS  
COMPANY FOR NON-STANDARD GAS PRORA-  
TION UNITS, BASIN-DAKOTA GAS POOL,  
RIO ARriba COUNTY, NEW MEXICO.

ORDER OF THE COMMISSION

BY THE COMMISSION:

This cause came on for hearing at 9 o'clock a.m. on June 30, 1965, at Santa Fe, New Mexico, before Examiner Daniel S. Nutter.

NOW, on this 16th day of August, 1965, the Commission, a quorum being present, having considered the testimony, the record, and the recommendations of the Examiner, and being fully advised in the premises,

FINDS:

(1) That due public notice having been given as required by law, the Commission has jurisdiction of this cause and the subject matter thereof.

(2) That the applicant, El Paso Natural Gas Company, seeks approval of 51 non-standard gas proration units in the Basin-Dakota Gas Pool, Rio Arriba County, New Mexico, in the following area:

TOWNSHIP 28 NORTH, RANGE 5 WEST, NMPM  
Sections 7 through 13, 24 and 25, and  
33 through 36

TOWNSHIP 28 NORTH, RANGE 6 WEST, NMPM  
Sections 7 through 12, 18 and 19, and  
30 through 34

TOWNSHIP 28 NORTH, RANGE 7 WEST, NMPM  
Sections 7 through 12, 18 and 19, and  
30 through 36

(3) That a standard gas proration unit in the Basin-Dakota Gas Pool consists of 320 acres, and that each of the proposed non-standard units exceeds 320 acres.

(4) That non-standard units are necessary in the subject area due to variations in legal subdivisions of the U. S. Public Land Survey.

(5) That the non-standard units created in the subject area should approximate 320 acres, insofar as is practicable, in order to afford to the owner of each property in the Basin-Dakota Gas Pool the opportunity to produce his just and equitable share of the gas in the pool, and otherwise prevent waste and protect correlative rights.

(6) That non-standard gas proration units approximating 320 acres, insofar as is practicable, should be created in the subject area, and that the subject application should otherwise be denied.

IT IS THEREFORE ORDERED:

(1) That the following-described non-standard gas proration units in the Basin-Dakota Gas Pool are hereby approved:

RIO ARriba COUNTY, NEW MEXICO  
TOWNSHIP 28 NORTH, RANGE 5 WEST, NMPM

Unit	Acres	Description
1	322.96	Section 7: Lots 1, 2, 3, and 4 and S/2 S/2 Section 8: SW/4 SW/4
2	313.42	Section 8: Lots 1, 2, 3, and 4, SE/4 SW/4, and S/2 SE/4 Section 9: Lot 4 and SW/4 SW/4
3	322.35	Section 9: Lots 1, 2, and 3, SE/4 SW/4, and S/2 SE/4 Section 10: Lot 4 and S/2 SW/4
4	321.61	Section 10: Lots 1, 2, and 3 and S/2 SE/4 Section 11: Lot 4, S/2 SW/4, and SW/4 SE/4

-3-

CASE No. 3272

Order No. R-2948

TOWNSHIP 28 NORTH, RANGE 5 WEST, NMPM (CONT.)

Unit	Acres	Description
5	310.19	Section 11: Lots 1, 2, and 3 and SE/4 SE/4 Section 12: Lots 3 and 4, S/2 SW/4, and SW/4 SE/4
6	342.30	Section 12: Lots 1, 2, and 5 Section 13: Lots 1 and 2, W/2 NE/4, and NW/4 SE/4
7	327.36	Section 13: Lots 3 and 4 and SW/4 SE/4 Section 24: Lots 1 and 2 and W/2 NE/4
8	329.09	Section 24: Lots 3 and 4 and W/2 SE/4 Section 25: Lots 1 and 2 and NW/4 NE/4
9	316.76	Section 25: Lots 3 and 4, SW/4 NE/4 and W/2 SE/4 Section 36: Lot 1 and NW/4 NE/4
10	330.74	Section 36: Lots 2, 3, 5, 6, 7, and 8 and NW/4 SE/4
11	345.39	Section 36: Lot 4, NE/4 NW/4, S/2 NW/4, SW/4 NE/4, and N/2 SW/4 Section 35: Lot 1
12	330.92	Section 36: NW/4 NW/4 Section 35: Lot 2, NE/4, and N/2 SE/4
13	345.82	Section 35: Lots 3 and 4, NE/4 NW/4, S/2 NW/4, and N/2 SW/4 Section 34: Lot 1
14	326.42	Section 35: NW/4 NW/4 Section 34: Lot 2, NE/4, and N/2 SE/4
15	329.70	Section 34: W/2
16	325.46	Section 33: E/2

-4-

CASE No. 3272

Order No. R-2948

TOWNSHIP 28 NORTH, RANGE 6 WEST, NMPM

Unit	Acres	Description
1	353.10	Section 12: Lots 1, 2, 3, and 4 and S/2 S/2 Section 11: Lot 1 and SE/4 SE/4
2	353.83	Section 11: Lots 2, 3, and 4, S/2 SW/4, and SW/4 SE/4 Section 10: Lots 1 and 2 and S/2 SE/4
3	354.79	Section 10: Lots 3 and 4 and S/2 SW/4 Section 9: Lots 1, 2, and 3, SE/4 SW/4, and S/2 SE/4
4	356.16	Section 9: Lot 4 and SW/4 SW/4 Section 8: Lots 1, 2, 3, and 4 and S/2 S/2
5	326.18	Section 7: Lots 1, 2, 3, 4, and 5, SE/4 SW/4, and S/2 SE/4 Section 18: Lot 1 and NE/4 NW/4
6	328.37	Section 18: Lots 2, 3, and 4, SE/4 NW/4, and E/2 SW/4 Section 19: Lots 1 and 2 and E/2 NW/4
7	328.77	Section 19: Lots 3 and 4 and E/2 SW/4 Section 30: Lots 1, 2, and 3, E/2 NW/4, and NE/4 SW/4
→ 8	334.79	Section 30: Lot 4 and SE/4 SW/4 Section 31: Lots 1, 2, 3, 4, and 5, E/2 NW/4, and NE/4 SW/4
9	326.29	Section 31: E/2
10	325.23	Section 32: W/2
11	325.04	Section 32: E/2
12	325.59	Section 33: W/2
13	325.02	Section 33: E/2
14	324.69	Section 34: W/2
15	324.63	Section 34: E/2



TOWNSHIP 28 NORTH, RANGE 7 WEST, NMPM

Unit	Acres	Description
1	321.22	Section 12: Lots 1, 2, 3, and 4 and S/2 S/2 Section 11: Lot 1
2	333.76	Section 11: Lots 2, 3, and 4 and S/2 S/2 Section 10: Lot 1 and SE/4 SE/4
3	331.55	Section 10: Lots 2, 3, and 4, S/2 SW/4, and SW/4 SE/4 Section 9: Lots 1 and 2 and SE/4 SE/4
4	338.02	Section 9: Lots 3 and 4, S/2 SW/4, and SW/4 SE/4 Section 8: Lots 1, 2, and 3 and SE/4 SE/4
5	313.00	Section 8: Lot 4, S/2 SW/4, and SW/4 SE/4 Section 7: Lot 1, SE/4 SW/4, and S/2 SE/4
6	331.11	Section 7: Lots 2, 3, 4, and 5 Section 18: Lots 1, 2, and 3 and E/2 NW/4
7	345.30	Section 18: Lot 4 and E/2 SW/4 Section 19: Lots 1, 2, and 3, E/2 NW/4, and NE/4 SW/4
8	342.17	Section 19: Lot 4 and SE/4 SW/4 Section 30: Lots 1, 2, 3, and 4, E/2 NW/4, and NE/4 SW/4
9	316.50	Section 30: SE/4 SW/4 Section 31: Lot 1, E/2 NW/4, and NE/4
10	339.73	Section 31: Lots 2, 3, 4, 5, 6, and 7, NE/4 SW/4, and N/2 SW/4
11	315.36	Section 32: W/2
12	315.68	Section 32: E/2
13	316.00	Section 33: W/2
14	316.32	Section 33: E/2

-6-

CASE No. 3272

Order No. R-2948

TOWNSHIP 28 NORTH, RANGE 7 WEST, NMPM (CONT.)

Unit	Acres	Description
15	318.40	Section 34: W/2
16	324.70	Section 35: W/2
17	327.70	Section 35: E/2
18	328.82	Section 36: W/2
19	328.06	Section 36: E/2

(2) That the subject application is otherwise hereby denied.

(3) That jurisdiction of this cause is retained for the entry of such further orders as the Commission may deem necessary.

DONE at Santa Fe, New Mexico, on the day and year hereinabove designated.

STATE OF NEW MEXICO  
OIL CONSERVATION COMMISSION

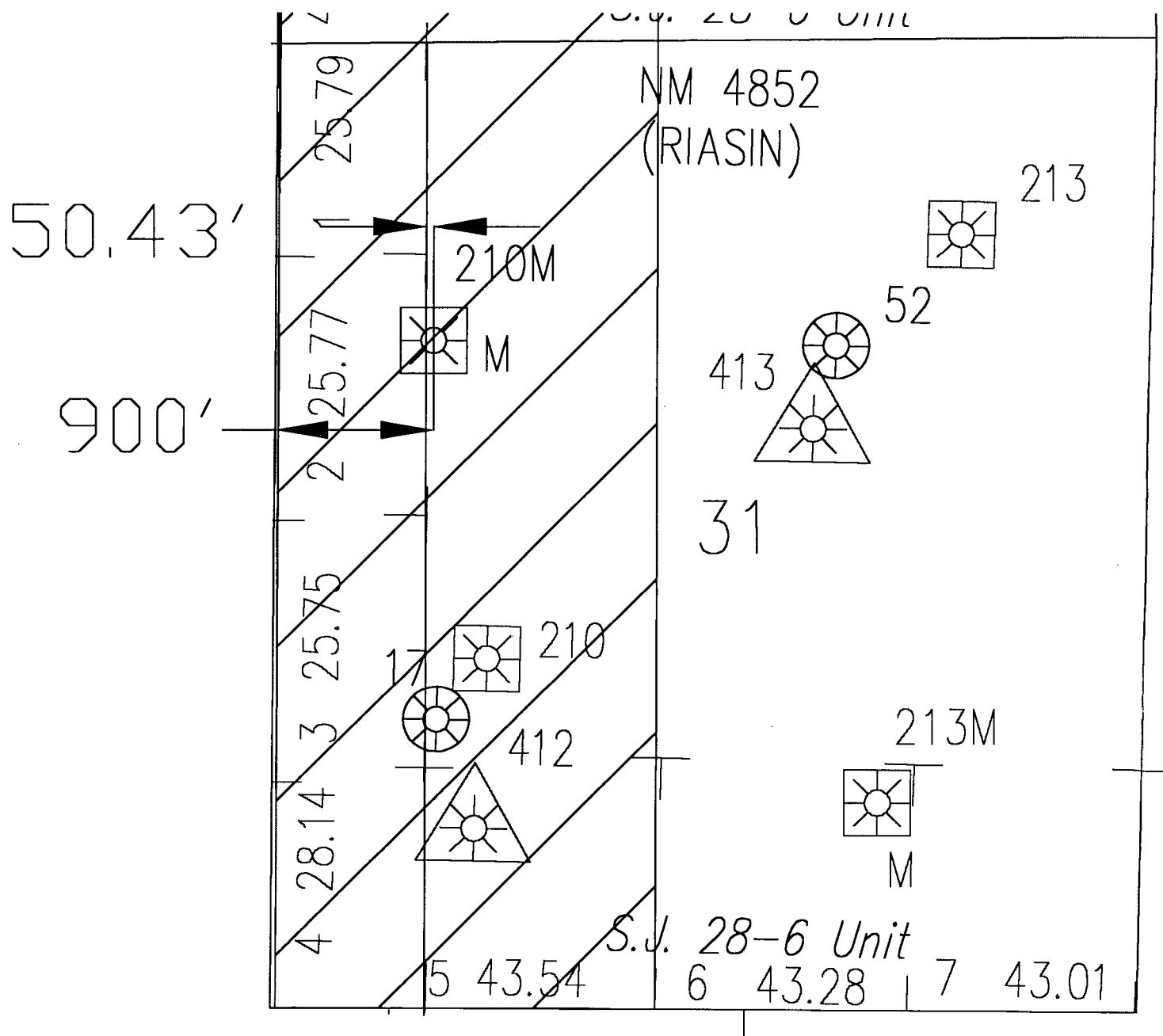
JACK M. CAMPBELL, Chairman

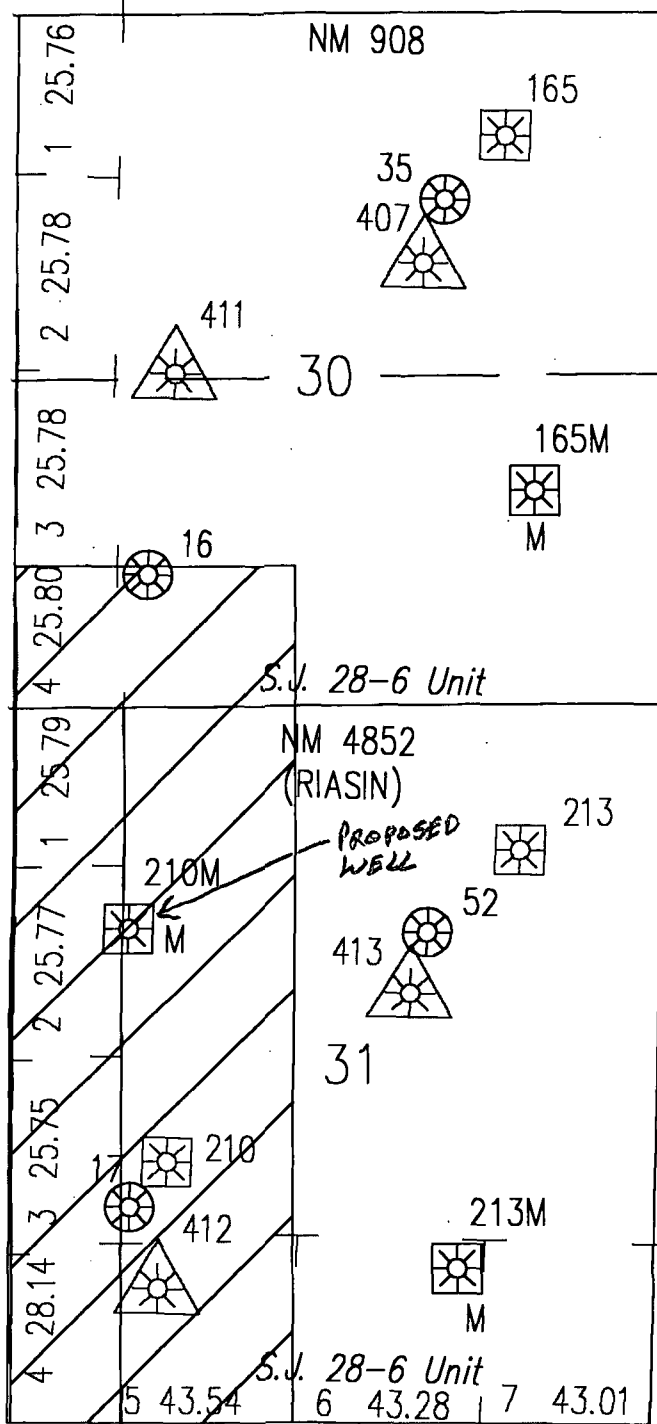
GUYTON B. HAYS, Member

S E A L

A. L. PORTER, JR., Member & Secretary

esr/

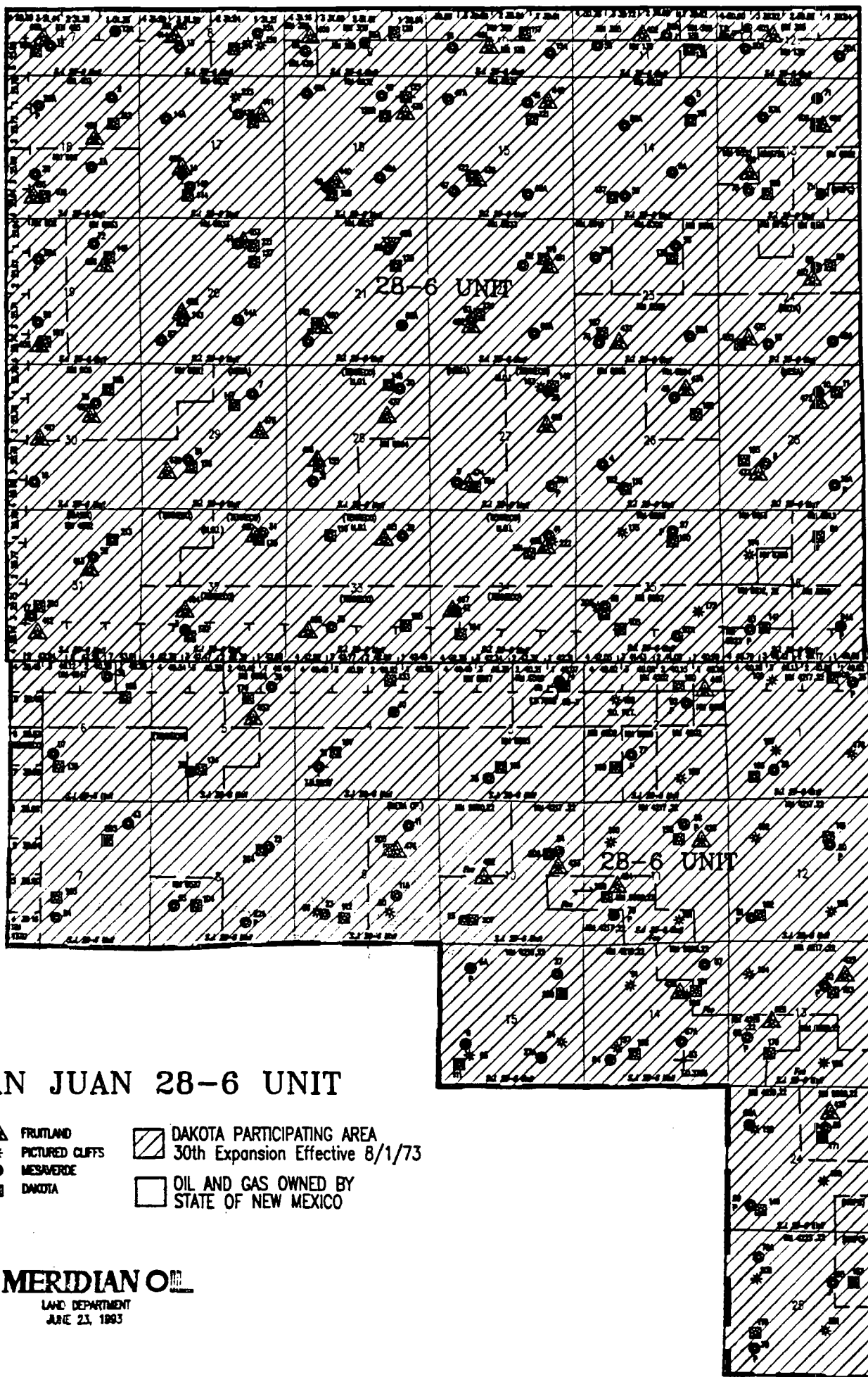




## SAN JUAN UNIT # 210M

- |  |                 |  |           |
|--|-----------------|--|-----------|
|  | FRUITLAND SAND  |  | MESAVERDE |
|  | FRUITLAND COAL  |  | DAKOTA    |
|  | PICTURED CLIFFS |  | GALLUP    |

R6W



T  
28  
N

T  
27  
N

# SAN JUAN 28-6 UNIT

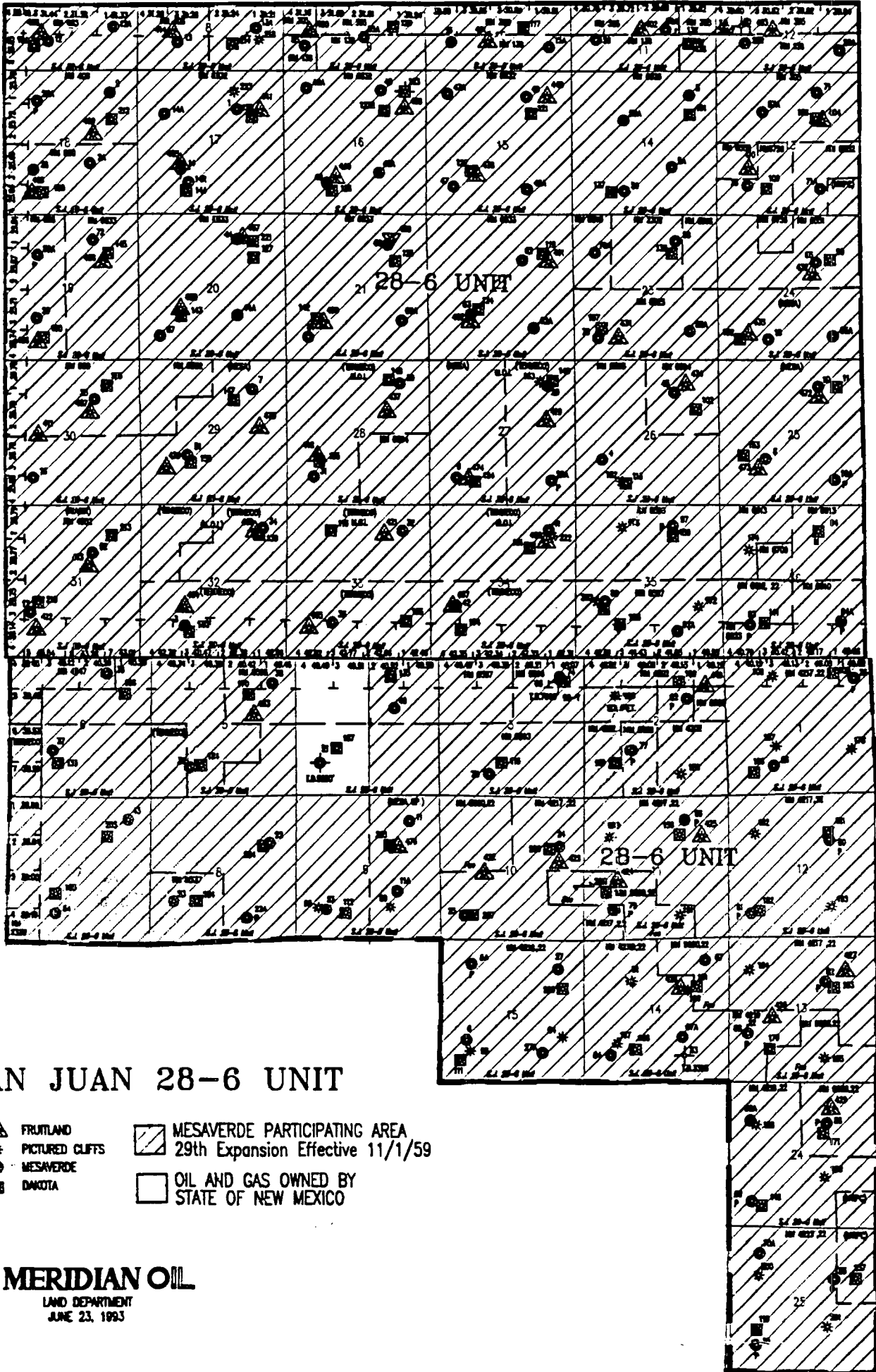
- ▲ FRUITLAND
- \* PICTURED CLIFFS
- MESAVERDE
- DAKOTA
- ▨ DAKOTA PARTICIPATING AREA
- 30th Expansion Effective 8/1/73
- OIL AND GAS OWNED BY STATE OF NEW MEXICO

**MERIDIAN OIL**  
LAND DEPARTMENT  
JUNE 23, 1993

R6W

T 28  
N

T 27  
N



# SAN JUAN 28-6 UNIT

- ▲ FRUITLAND
- \* PICTURED CLIFFS
- MESAVERDE
- DAKOTA
- ▨ MESAVERDE PARTICIPATING AREA  
29th Expansion Effective 11/1/59
- OIL AND GAS OWNED BY  
STATE OF NEW MEXICO

**MERIDIAN OIL**

LAND DEPARTMENT  
JUNE 23, 1993



NEW MEXICO ENERGY, MINERALS  
& NATURAL RESOURCES DEPARTMENT

OIL CONSERVATION DIVISION  
2040 South Pacheco Street  
Santa Fe, New Mexico 87505  
(505) 827-7131

**ADMINISTRATIVE ORDER DHC-1692**

Burlington Resources Oil & Gas Company  
P.O. Box 4289  
Farmington, New Mexico 87499-4289

Attention: Ms. Peggy Bradfield

San Juan 28-6 Unit No.210M  
API No.-N/A  
*Unit D, Section 31, Township 28 North, Range 6 West, NMPM,  
Rio Arriba County, New Mexico.  
Basin-Dakota (Prorated Gas - 71599) and  
Blanco-Mesaverde (Prorated Gas - 72319) Pools*

Dear Ms. Bradfield:

Reference is made to your recent application for an exception to Rule 303.A. of the Division Rules and Regulations to permit the above described well to commingle production from the subject pools in the wellbore.

It appearing that the subject well qualifies for approval for such exception pursuant to the provisions of Rule 303.C., and that reservoir damage or waste will not result from such downhole commingling, and correlative rights will not be violated thereby, you are hereby authorized to commingle the production as described above and any Division Order which authorized the dual completion and required separation of the zones is hereby placed in abeyance.

The maximum amount of gas which may be produced daily from the well shall be determined by Division Rules and Regulations or by the gas allowable for each respective prorated pool as printed in the Division's San Juan Basin Gas Proration Schedule.

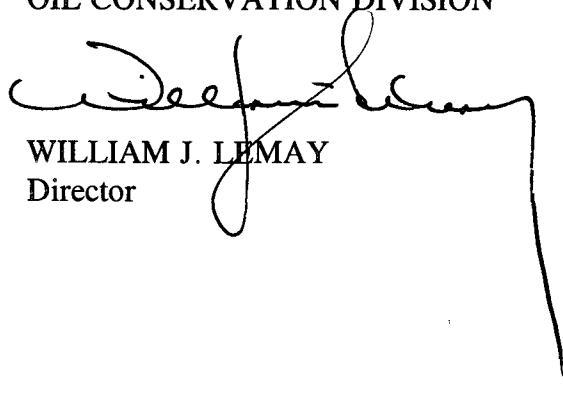
The applicant shall consult with the supervisor of the Aztec District Office of the Division upon completion and testing of the well in order to establish a fixed allocation of production from each of the commingled zones. Upon approval by the Division's District Office, the applicant shall submit the allocation formula to the Santa Fe Office of the Division.

REMARKS: The operator shall notify the Aztec District Office of the Division upon implementation of the commingling process.

Pursuant to Rule 303.H., the commingling authority granted herein may be rescinded by the Division Director if, in his opinion, conservation is not being best served by such commingling.

Approved at Santa Fe, New Mexico on this 6th day of October, 1997.

STATE OF NEW MEXICO  
OIL CONSERVATION DIVISION

A handwritten signature in black ink, appearing to read 'William J. Lemay', is written over the printed name and title. The signature is fluid and cursive, with a long, sweeping line extending from the end of the name down towards the bottom right of the page.

WILLIAM J. LEMAY  
Director

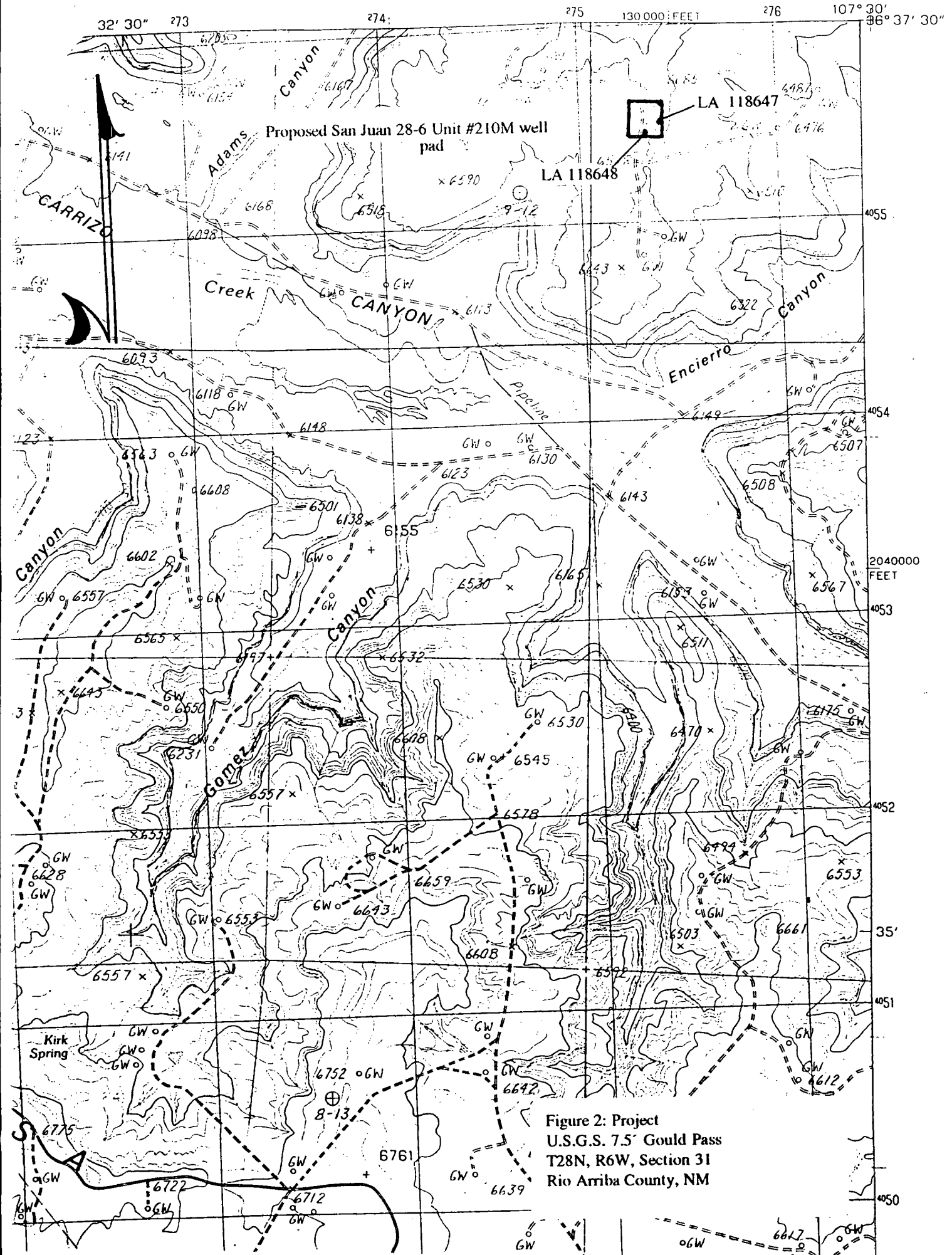
S E A L

WJL/DRC

cc: Oil Conservation Division - Aztec  
Bureau of Land Management-Farmington



NEW MEXICO  
7.5 MINUTE SERIES (TOPOGRAPHIC)





NEW MEXICO ENERGY, MINERALS  
& NATURAL RESOURCES DEPARTMENT

OIL CONSERVATION DIVISION  
2040 South Pacheco Street  
Santa Fe, New Mexico 87505  
(505) 827-7131

September 17, 1997

Burlington Resources Oil & Gas Company  
P. O. Box 4289  
Farmington, New Mexico 87499-4289

Attention: Peggy Bradfield

Re: *Application dated August 7, 1997 for administrative approval to drill the San Juan "28-6" Unit Well No. 210-M at an unorthodox gas well location for both the Blanco-Mesaverde and Basin-Dakota Pools 1685 feet from the North line and 900 feet from the West line (Unit F) of irregular Section 31, Township 28 North, Range 6 West, NMPM, Rio Arriba County, New Mexico.*

Dear Ms. Bradfield:

I am returning the subject application as incomplete. In carrying out my duties in properly preparing an administrative order for the Director's signature in this matter (please refer to Division Administrative Order NSL-3779, dated March 24, 1997 as an example), information on all wells within each respective gas spacing and proration unit ("GPU") is needed. This includes well names, well numbers, API numbers, complete location descriptions, and in particular reference to all previous orders related to a particular well.

Also, is this application really a request to administratively form a 334.79-acre non-standard GPU in the Dakota interval that crosses a section line or is this a request to drill an infill Dakota well within an existing and previously approved GPU. If the latter is the case, please submit a copy of said order.

The subject location for the proposed 210-M well appears to be on the internal quarter-quarter section line between Lot 2 and Unit "F" of said Section 31. What is the distance off of this internal boundary line?

I have in the past researched this and similar information and included it in previous orders; however, work load and time constraints do not allow me to provide this luxury any longer. In the future the applicant must provide all information required to complete an application. Any deletion may result in an application being returned. I apologize for any inconvenience this may cause.

Sincerely,

Michael E. Stogner  
Chief Hearing Officer/Engineer

cc: New Mexico Oil Conservation Division - Aztec  
W. Thomas Kellahin - Santa Fe  
William J. LeMay, Director - NMOCD, Santa Fe  
W. Perry Pierce - Burlington Resources Oil & Gas Company, Santa Fe



STATE OF NEW MEXICO  
ENERGY, MINERALS AND NATURAL RESOURCES DEPARTMENT

OIL CONSERVATION DIVISION

2040 S. PACHECO  
SANTA FE, NEW MEXICO 87505  
(505) 827-7131

March 24, 1997

Burlington Resources Oil & Gas Company  
P. O. Box 4289  
Farmington, New Mexico 87499-4289  
Attention: Peggy Bradfield

*Administrative Order NSL-3779*

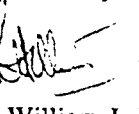
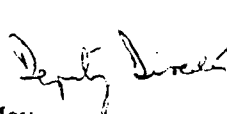
Dear Ms. Bradfield:

Reference is made to your application dated January 28, 1997 for an unorthodox "infill" gas well location for both the Blanco-Mesaverde and Basin-Dakota Pools for the proposed San Juan "28-5" Unit Well No. 73-M to be drilled 765 feet from the South line and 2075 feet from the East line (Lot 2/Unit O) of Section 35, Township 28 North, Range 5 West, NMPM, Rio Arriba County, New Mexico.

Production from the Blanco-Mesaverde Pool is to be included in an existing standard 361.36-acre gas spacing and proration unit comprising Lots 1 through 4 and the N/2 S/2 (S/2 equivalent) of said Section 35 which is currently dedicated to Burlington Resources' San Juan "28-5" Unit Well No. 21 (API No. 30-039-07239), located at a standard gas well location 1650 feet from the South line and 1075 feet from the West line (Unit L) of said Section 35 and production from the Basin-Dakota Pool is to be included in an existing non-standard 330.92-acre gas spacing and proration unit (approved by Division Order No. R-2948, dated August 16, 1965) comprising Lot 2, the NE/4, and the N/2 SE/4 of said Section 35 and the NE/4 NE/4 of Section 36, Township 28 North, Range 5 West, NMPM, Rio Arriba County, New Mexico, which is currently dedicated to Burlington Resources' San Juan "28-5" Unit Well No. 73 (API No. 30-039-20036), located at a standard gas well location 1845 feet from the North and East lines (Unit G) of said Section 35.

By the authority granted me under the provisions of Rule 2(d) of the "General Rules For The Prorated Gas Pools of New Mexico/Special Rules and Regulations For The Blanco-Mesaverde Pool/Special Rules and Regulations for the Basin-Dakota Pool", as promulgated by Division Order No. R-8170, as amended, the above-described unorthodox "infill" gas well location for the San Juan "28-5" Unit Well No. 73-M is hereby approved.

Sincerely,

William J. LeMay  
Director

WJL/MES/kv

cc: Oil Conservation Division - Aztec  
U. S. Bureau of Land Management - Farmington

DATE IN: 8/8/97	SUSPENSE: 8/28/97	ENGINEER: MS	LOGGED: MN	TYPE: NSL
-----------------	-------------------	--------------	------------	-----------

ABOVE THIS LINE FOR DIVISION USE ONLY

## NEW MEXICO OIL CONSERVATION DIVISION

- Engineering Bureau -

### ADMINISTRATIVE APPLICATION COVERSHEET

THIS COVERSHEET IS MANDATORY FOR ALL ADMINISTRATIVE APPLICATIONS FOR EXCEPTIONS TO DIVISION RULES AND REGULATIONS

#### Application Acronyms:

[NSP-Non-Standard Proration Unit] [NSL-Non-Standard Location]  
 [DD-Directional Drilling] [SD-Simultaneous Dedication]  
 [DHC-Downhole Commingling] [CTB-Lease Commingling] [PLC-Pool/Lease Commingling]  
 [PC-Pool Commingling] [OLS - Off-Lease Storage] [OLM-Off-Lease Measurement]  
 [WFX-Waterflood Expansion] [PMX-Pressure Maintenance Expansion]  
 [SWD-Salt Water Disposal] [IPI-Injection Pressure Increase]  
 [EOR-Qualified Enhanced Oil Recovery Certification] [PPR-Positive Production Response]

#### [1] TYPE OF APPLICATION - Check Those Which Apply for [A]

[A] Location - Spacing Unit - Directional Drilling  
☒ NSL ☐ NSP ☐ DD ☐ SD

AUG - 8 1997

Check One Only for [B] and [C]

[B] Commingling - Storage - Measurement  
☐ DHC ☐ CTB ☐ PLC ☐ PC ☐ OLS ☐ OLM

[C] Injection - Disposal - Pressure Increase - Enhanced Oil Recovery  
☐ WFX ☐ PMX ☐ SWD ☐ IPI ☐ EOR ☐ PPR

see MV + W/K 62

#### [2] NOTIFICATION REQUIRED TO: - Check Those Which Apply, or ☐ Does Not Apply

[A] ☐ Working, Royalty or Overriding Royalty Interest Owners

[B] ☒ Offset Operators, Leaseholders or Surface Owner

[C] ☐ Application is One Which Requires Published Legal Notice

[D] ☒ Notification and/or Concurrent Approval by BLM or SLO

U.S. Bureau of Land Management - Commissioner of Public Lands, State Land Office

[E] ☐ For all of the above, Proof of Notification or Publication is Attached, and/or,

[F] ☐ Waivers are Attached

#### [3] INFORMATION / DATA SUBMITTED IS COMPLETE - Statement of Understanding

I hereby certify that I, or personnel under my supervision, have read and complied with all applicable Rules and Regulations of the Oil Conservation Division. Further, I assert that the attached application for administrative approval is accurate and complete to the best of my knowledge and where applicable, verify that all interest (WI, RI, ORRI) is common. I understand that any omission of data, information or notification is cause to have the application package returned with no action taken.

Note: Statement must be completed by an individual with supervisory capacity.

Peggy Bradfield

Regulatory/Compliance Administrator

Print or Type Name

Signature

Title

Date

8-7-97

# BURLINGTON RESOURCES

---

SAN JUAN DIVISION  
August 7, 1997

Sent Federal Express

Mr. William LeMay  
New Mexico Oil Conservation Division  
2040 South Pacheco  
Santa Fe, New Mexico 87505

Re: San Juan 28-6 Unit #210M  
1685'FNL, 900'FWL, Section 31, T-28-N, R-6-W, Rio Arriba County  
API # 30-039-not yet assigned

Dear Mr. LeMay:

Burlington Resources is applying for administrative approval of a non-standard location for the above location in the Mesa Verde and Dakota formations. This application for the referenced location is due to terrain, the presence of archaeology and at the request of the Bureau of Land Management.

This serves as application for non-standard proration for the Dakota formation also, at 334.79 acres, crossing the section line to include a portion of Section 30, T-28-N, R-6-W.

The following attachments are for your review:

1. Application for Permit to Drill.
2. Completed C-102 at referenced location.
3. Offset operators/owners plat, and certification of notification
4. 7.5 minute topographic map showing the orthodox windows, and enlargement of the map to define topographic features.

We appreciate your earliest consideration of this application.

Sincerely,



Peggy Bradfield  
Regulatory/Compliance Administrator

xc: NMOCD - Aztec District Office  
Bureau of Land Management - FDO

## WAIVER

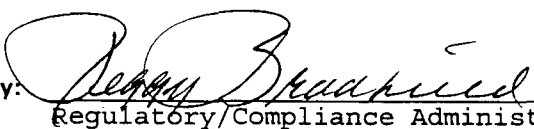
\_\_\_\_\_ hereby waives objection to Burlington Resources' application for a non-standard location for their San Juan 28-6 Unit #210M as proposed above.

By: \_\_\_\_\_ Date: \_\_\_\_\_

xc: Amoco Production  
Conoco Inc.

UNITED STATES  
DEPARTMENT OF THE INTERIOR  
BUREAU OF LAND MANAGEMENT

APPLICATION FOR PERMIT TO DRILL, DEEPEN, OR PLUG BACK

1a. Type of Work DRILL	5. Lease Number SF-080430A Unit Reporting Number 891001051B - Dk 8910010510 - MV	
1b. Type of Well GAS	6. If Indian, All. or Tribe	
2. Operator <b>BURLINGTON RESOURCES</b> Oil & Gas Company	7. Unit Agreement Name San Juan 28-6 Unit	
3. Address & Phone No. of Operator PO Box 4289, Farmington, NM 87499  (505) 326-9700	8. Farm or Lease Name San Juan 28-6 Unit 9. Well Number 210M	
4. Location of Well 1685' FNL, 900' FWL  Latitude 36° 37.2, Longitude 107° 30.7	10. Field, Pool, Wildcat Blanco Mesa Verde/ Basin Dakota 11. Sec., Twn, Rge, Mer. (NMPM) Sec 31, T-28-N, R-6-W API # 30-039-	
14. Distance in Miles from Nearest Town 6 miles to Gobernador	12. County Rio Arriba	13. State NM
15. Distance from Proposed Location to Nearest Property or Lease Line 900'	17. Acres Assigned to Well 334.79; 268.99 W/2	
16. Acres in Lease		
18. Distance from Proposed Location to Nearest Well, Drlg, Compl, or Applied for on this Lease 1500'		
19. Proposed Depth 7811'	20. Rotary or Cable Tools Rotary	
21. Elevations (DF, FT, GR, Etc.) 6579' GR	22. Approx. Date Work will Start	
23. Proposed Casing and Cementing Program See Operations Plan attached		
24. Authorized by:  Regulatory/Compliance Administrator	7-11-97 Date	

PERMIT NO. \_\_\_\_\_ APPROVAL DATE \_\_\_\_\_  
APPROVED BY \_\_\_\_\_ TITLE \_\_\_\_\_ DATE \_\_\_\_\_

Archaeological Report to be submitted by Arboles Contract Archaeology  
Threatened and Endangered Species Report to be submitted  
NOTE: This format is issued in lieu of U.S. BLM Form 3160-3

District I  
PO Box 1980, Hobbs, NM 88241-1980

District II  
PO Drawer 00, Artesia, NM 88211-0719

District III  
1000 Rio Brazos Rd., Aztec, NM 87410

District IV  
PO Box 2088, Santa Fe, NM 87504-2088

State of New Mexico  
Energy, Minerals & Natural Resources Department

OIL CONSERVATION DIVISION  
PO Box 2088  
Santa Fe, NM 87504-2088

Revised February  
Instructions  
Submit to Appropriate District  
State Lease -  
Fee Lease -

☐ AMENDED

WELL LOCATION AND ACREAGE DEDICATION PLAT

API Number 30-039-		Pool Code 72319/71599		Pool Name Blanco Mesaverde/Basin Dakota		
Property Code 7462		Property Name San Juan 28-6 Unit				Well No. 210
GRID No. 14538		Operator Name BURLINGTON RESOURCES OIL & GAS COMPANY				Elev 657

<sup>10</sup> Surface Location

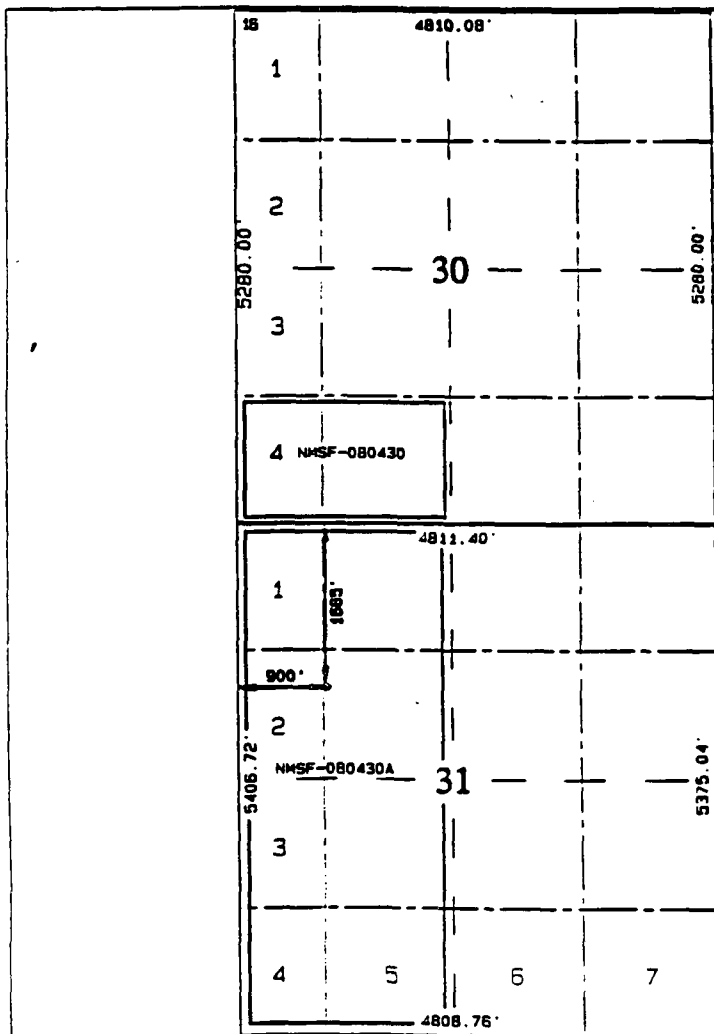
UL or lot no. F	Section 31	Township 28N	Range 6W	Lot 10	Feet from line 1685	North/South line North	Feet from line 900	East/West line West	Rio
--------------------	---------------	-----------------	-------------	--------	------------------------	---------------------------	-----------------------	------------------------	-----

<sup>11</sup> Bottom Hole Location If Different From Surface

UL or lot no.	Section	Township	Range	Lot 10	Feet from line	North/South line	Feet from line	East/West line
---------------	---------	----------	-------	--------	----------------	------------------	----------------	----------------

Dedicated Acres MV-W 268.99 DK- 334.79	Joint or Infill	Consolidation Code	Order No.
--	-----------------	--------------------	-----------

NO ALLOWABLE WILL BE ASSIGNED TO THIS COMPLETION UNTIL ALL INTERESTS HAVE BEEN CONSC  
OR A NON-STANDARD UNIT HAS BEEN APPROVED BY THE DIVISION



<sup>17</sup> OPERATOR CERTIF  
I hereby certify that the information herein is true and complete to the knowledge and belief

*Peggy Bradfield*  
Signature

Peggy Bradfield

Printed Name

Regulatory Admini  
Title

7-11-97

Date

<sup>18</sup> SURVEYOR CERTIF

I hereby certify that the well on this plat was plotted from actual surveys made by me or under my supervision, and that the same is correct to the best of my belief

6/10/97

Date of Survey

Signature and Seal of Surveyor

NEW MEXICO  
6857

6857

Certificate Number

OPERATIONS PLAN

Well Name: San Juan 28-6 Unit #210M  
Location: 1685' FNL, 900' FWL Sec 31, T-28-N, R-6-W  
 Rio Arriba County, NM  
 Latitude 36° 37.2, Longitude 107° 30.7  
Formation: Blanco Mesa Verde/Basin Dakota  
Elevation: 6579' GL

<u>Formation Tops:</u>	<u>Top</u>	<u>Bottom</u>	<u>Contents</u>
Surface	San Jose	2526'	
Ojo Alamo	2526'	2893'	aquifer
Fruitland	2893'	3298'	gas
Pictured Cliffs	3298'	3411'	gas
Lewis	3411'	3771'	gas
Intermediate TD	3511'		
Mesa Verde	3771'	4231'	gas
Chacra	4231'	4931'	
Massive Cliff House	4931'	5076'	gas
Menefee	5076'	5486'	gas
Massive Point Lookout	5486'	6711'	gas
Gallup	6711'	7456'	gas
Greenhorn	7456'	7561'	gas
Graneros	7561'	7373'	gas
Dakota	7673'		gas
TD (4 1/2" liner)	7811'		

Logging Program:

Cased hole - CBL - TD to 200' above TOC, GR/CNL across MV/Dk

Mud Program:

<u>Interval</u>	<u>Type</u>	<u>Weight</u>	<u>Vis.</u>	<u>Fluid Loss</u>
0- 200'	Spud	8.4-9.0	40-50	no control
200-3511'	LSND	8.4-9.0	30-60	no control
3511-7811'	Gas	n/a	n/a	n/a

Pit levels will be visually monitored to detect gain or loss of fluid control.

Casing Program (as listed, the equivalent, or better):

<u>Hole Size</u>	<u>Depth Interval</u>	<u>Csq. Size</u>	<u>Wt.</u>	<u>Grade</u>
12 1/4"	0' - 200'	9 5/8"	32.3#	WC-50
8 3/4"	0' - 3511'	7"	20.0#	J-55
6 1/4"	3411' - 6855'	4 1/2"	10.5#	J-55
6 1/4"	6855' - 7811'	4 1/2"	11.6#	J-55

Tubing Program:

0' - 7811'      2 3/8"      4.70# EUE



**BOP Specifications, Wellhead and Tests:****Surface to Intermediate TD -**

11" 2000 psi minimum double gate BOP stack (Reference Figure #1). After nipple-up prior to drilling out surface casing, rams and casing will be tested to 600 psi for 30 minutes.

**Intermediate TD to Total Depth -**

11" 2000 psi minimum double gate BOP stack (Reference Figure #1). After nipple-up prior to drilling out intermediate casing, rams and casing will be tested to 1500 psi for 30 minutes.

**Surface to Total Depth -**

2" nominal, 2000 psi minimum choke manifold (Reference Figure #3).

**Completion Operations -**

7 1/16" 2000 psi double gate BOP stack (Reference Figure #2). After nipple-up prior to completion, pipe rams, casing and liner top will be tested to 2000 psi for 15 minutes.

**Wellhead -**

9 5/8" x 7" x 2 3/8" x 3000 psi tree assembly.

**General -**

- Pipe rams will be actuated once each day and blind rams will be actuated once each trip to test proper functioning.
- An upper kelly cock valve with handle available and drill string valves to fit each drill string will be available on the rig floors at all times.
- BOP pit level drill will be conducted weekly for each drilling crew.
- All BOP tests and drills will be recorded in daily drilling reports.
- Blind and pipe rams will be equipped with extension hand wheels.

**Cementing:**

9 5/8" surface casing - cement with 163 sx Class "B" cement with 1/4# flocele/sx and 2% calcium chloride (188 cu.ft. of slurry, 200% excess to circulate to surface). WOC 12 hrs. Test casing to 600 psi for 30 minutes.

Saw tooth guide shoe on bottom. Bowspring centralizers will be run in accordance with Onshore Order #2.

**7" intermediate casing -**

Lead w/283 sx Class "B" w/3% medisilicate, 10# gilsonite/sx and 1/2# flocele/sx. Tail w/90 sx 50/50 Class "B" Poz w/2% calcium chloride, 2% gel, 1/2# flocele/sx and 10# gilsonite/sx (924 cu.ft. of slurry, 75% excess to circulate to surface.) WOC minimum of 12 hours before drilling out intermediate casing. If cement does not circulate to surface, a CBL will be run during completion operations to determine TOC. Test casing to 1500 psi for 30 minutes.

Cement nose guide shoe on bottom with float collar spaced on top of shoe joint. Bowspring centralizers spaced every other joint off bottom, to the base of the Ojo Alamo at 2893'. Two turbolating centralizers at the base of the Ojo Alamo at 2893'. Bowspring centralizers spaced every fourth joint from the base of the Ojo Alamo to the base of the surface casing.

#### 4 1/2" Production Liner -

Cement to cover minimum of 100' of 4 1/2" x 7" overlap. Lead with 106 sx 65/35 Class "B" poz with 6% gel, 5# gilsonite/sx and 1/4# flocele/sx. Tail with 310 sx 50/50 Class "B" Poz with 2% gel, 1/4# flocele/sx, 5# gilsonite/sx, and 0.4% fluid loss additive (609 cu.ft., 35% excess to cement 4 1/2" x 7" overlap). WOC a minimum of 18 hrs prior to completing.

Cement float shoe on bottom with float collar spaced on top of shoe joint.

Note: To facilitate higher hydraulic stimulation completion work, no liner hanger will be used. In its place, a long string of 4 1/2" casing will be run and cemented with a minimum of 100' of cement overlap between the 4 1/2" x 7" casing strings. After completion of the well, a 4 1/2" retrievable bridge plug will be set below the top of cement in the 4 1/2" x 7" overlap. The 4 1/2" casing will then be backed off above the top of cement in the 4 1/2" x 7" overlap and laid down. The liner top can then be pressure tested to ensure a seal between the liner top and the 7" casing has been achieved. The test pressure shall be the maximum anticipated pressure to which the seal will be exposed (700 psi for the Mesa Verde and 2500 psi for the Dakota). The 4 1/2" bridge plug will then be retrieved and the production tubing will be run to produce the well.

- If hole conditions permit, an adequate water spacer will be pumped ahead of each cement job to prevent cement/ mud contamination or cement hydration.
- The pipe will be rotated and/or reciprocated, if hole conditions permit.

#### Special Drilling Operations (Gas/Mist Drilling):

The following equipment will be operational while gas/mist drilling:

- An anchored blooie line will be utilized to discharge all cuttings and circulating medium to the blow pit a minimum of 100' from the wellhead.
- The blooie line will be equipped with an automatic igniter or pilot light.
- Compressors will be located a minimum of 100' from the wellhead in the opposite direction from the blooie line.
- Engines will have spark arresters or water cooled exhaust.
- Deduster equipment will be utilized.
- The rotating head will be properly lubricated and maintained.
- A float valve will be utilized above the bit.
- Mud circulating equipment, water, and mud materials will be sufficient to maintain control of the well.

Additional Information:

- The Dakota and Mesa Verde formations will be completed and commingled.
- No abnormal temperatures or hazards are anticipated.
- Anticipated pore pressures are as follows:

Fruitland Coal	800 psi
Pictured Cliffs	800 psi
Mesa Verde	700 psi
Dakota	2500 psi
- Sufficient LCM will be added to the mud system to maintain well control, if lost circulation is encountered.
- The west half is dedicated to the Mesa Verde and Dakota in this well.
- This gas is dedicated.

San Joaquin  
Drilling Engineer

7/14/97  
Date

# **BURLINGTON RESOURCES**

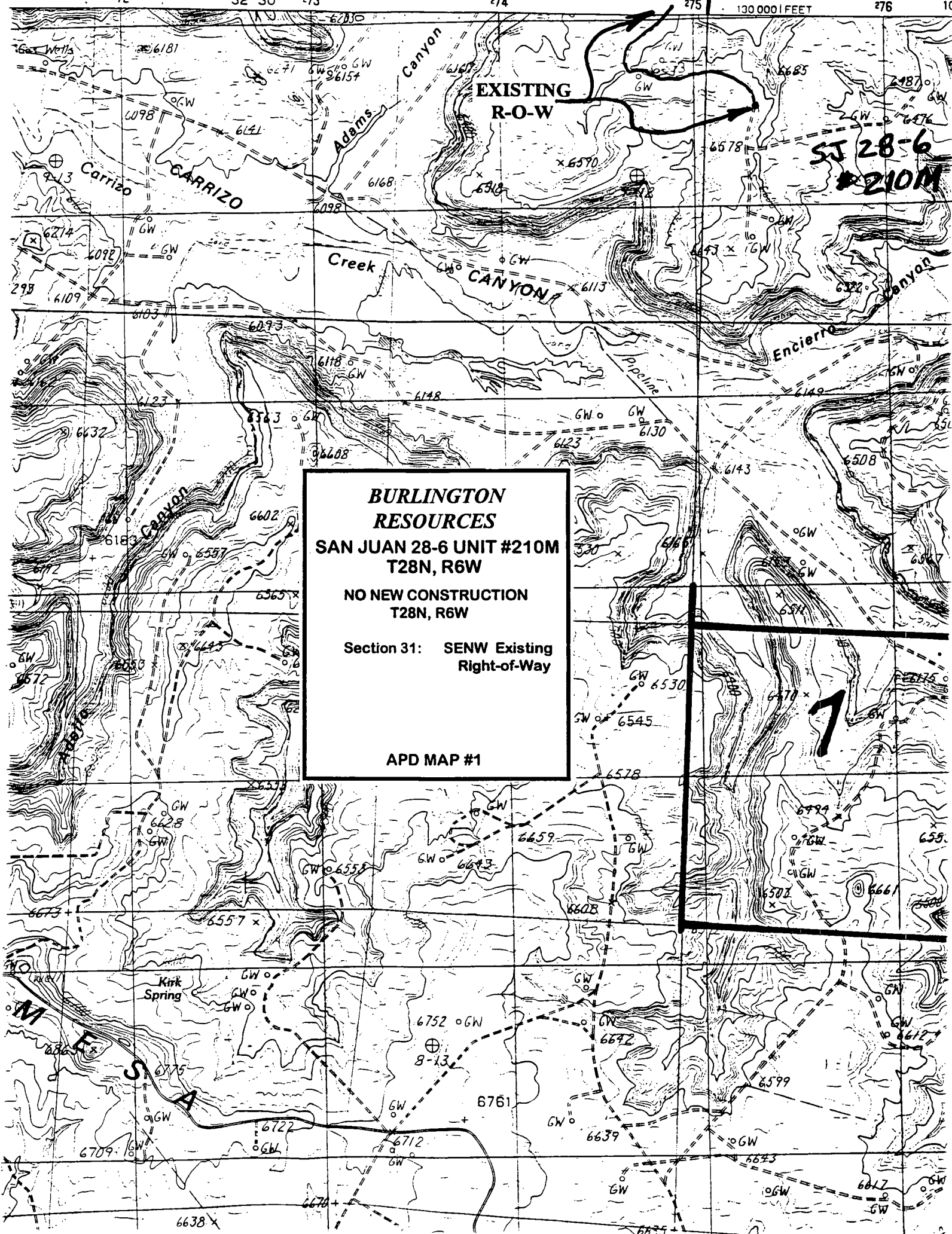
San Juan 28-6 Unit #210M  
Multi-Point Surface Use Plan

1. Existing Roads - Refer to Map No. 1. Existing roads used to access the proposed location will be properly maintained for the duration of the project. Bureau of Land Management right-of-way has been applied for as shown on Map No. 1.
2. Planned Access Road - Refer to Map No. 1 - None required.
3. Location of Existing Wells - Refer to Map No. 1A.
4. Location of Existing and/or Proposed Facilities if Well is Productive -
  - a. On the Well Pad - Refer to Plat No. 1, anticipated production facilities plat.
  - b. Off the Well Pad - Anticipated pipeline facilities as shown on the attached plat from El Paso Field Service.
5. Location and Type of Water Supply - Water will be hauled by truck for the proposed project and will be obtained from San Juan 28-6 Water Well located SW/4 Section 23, T-28-N, R-6-W, New Mexico
6. Source of Construction Materials - If construction materials are required for the proposed project, such materials will be obtained from a commercial quarry.
7. Methods of Handling Waste Materials - All garbage and trash materials will be removed from the site for proper disposal. A portable toilet will be provided for human waste and serviced in a proper manner. If liquids are left in the reserve pit after completion of the project, the pit will be fenced until the liquids have had adequate time to dry. The location clean-up will not take place until such time as the reserve pit can be properly covered over to prevent run-off from carrying waste materials into the watershed. Reserve pits will be lined as needed with either 12 mil bio-degradable plastic liner or a bentonite liner. All earthen pits will be so constructed as to prevent leakage from occurring; no earthen pit will be located on natural drainage. Generation of hazardous waste is not anticipated. Federal regulations will be adhered to regarding handling and disposal of such waste if so generated.
8. Ancillary Facilities - None anticipated.
9. Wellsite Layout - Refer to the location diagram and to the wellsite cut and fill diagram (Figure No. 4). The blow pit will be constructed with a 2'/160' grade to allow positive drainage to the reserve pit and prevent standing liquids in the blow pit.

10. Plans for Restoration of the Surface - After completion of the proposed project, the location will be cleaned and leveled. The location will be left in such a condition that will enable reseeding operations to be carried out. Seed mixture as designated by the responsible government agency will be used. The reseeding operations will be performed during the time period set forth by the responsible government agency. The permanent location facilities will be painted as designated by the responsible government agency.
11. Surface Ownership - Bureau of Land Management
12. Other Information - Environmental stipulations as outlined by the responsible government agency will be adhered to. Refer to the archaeological report for a description of the topography, flora, fauna, soil characteristics, dwellings, historical and cultural sites.
13. Operator's Representative and Certification - Burlington Resources Oil & Gas Company Regional Drilling Manager, Post Office Box 4289, Farmington, NM 87499, telephone (505) 326-9700. I hereby certify that I, or persons under my direct supervision, have inspected the proposed drill site and access route; that I am familiar with the conditions which presently exist; that the statements made in this plan, are to the best of my knowledge, true and correct; and that the work associated with the operations proposed herein will be performed by Burlington Resources Oil and Gas Company and its contractors and subcontractors in conformity with this plan and the terms and conditions under which it is approved.

  
Regulatory/Compliance Administrator Date

pb



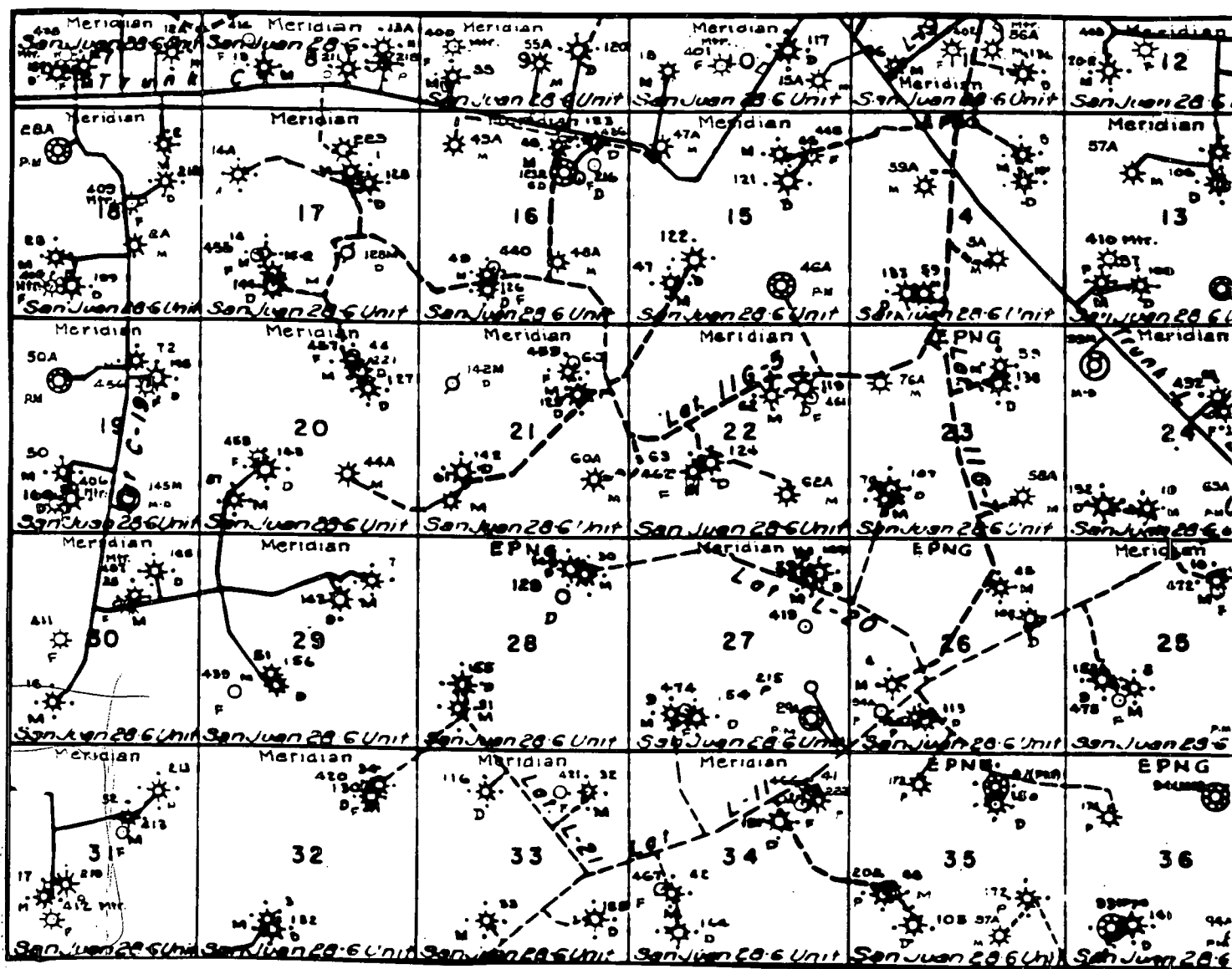
**BURLINGTON  
RESOURCES**

**SAN JUAN 28-6 UNIT #210M  
T28N, R6W**

**NO NEW CONSTRUCTION  
T28N, R6W**

**Section 31: SENW Existing  
Right-of-Way**

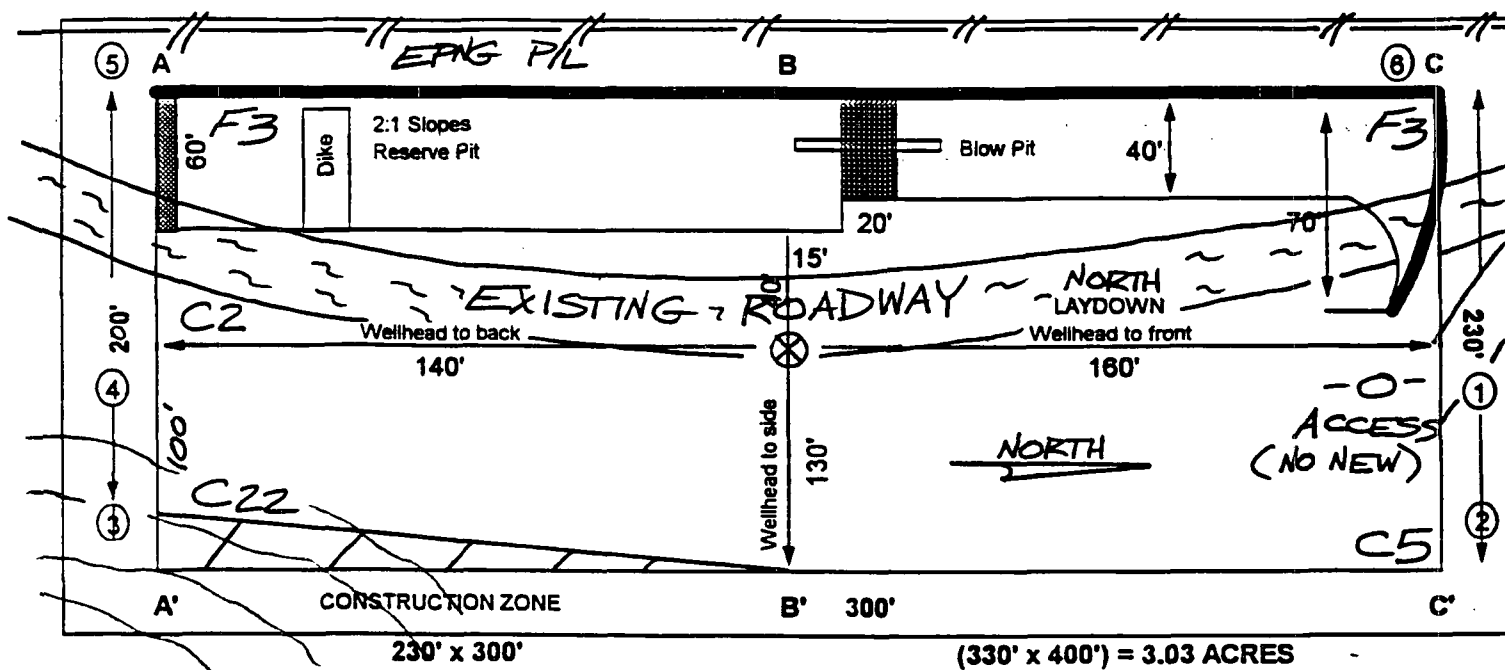
**APD MAP #1**



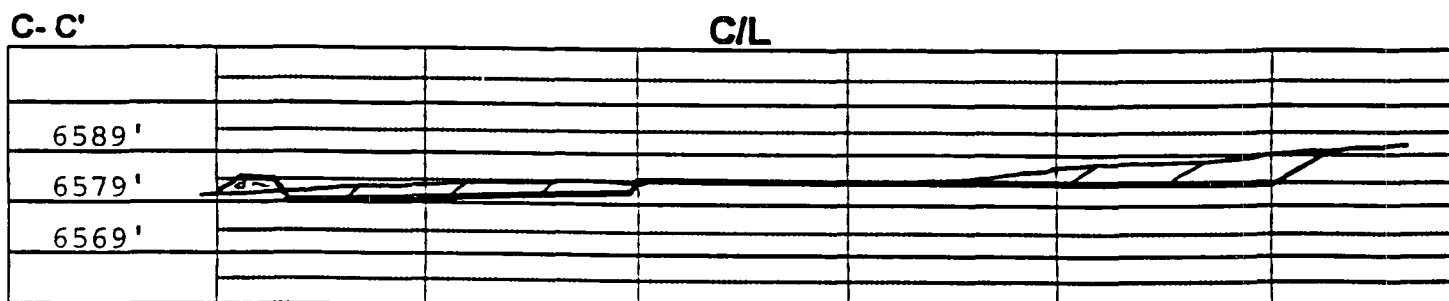
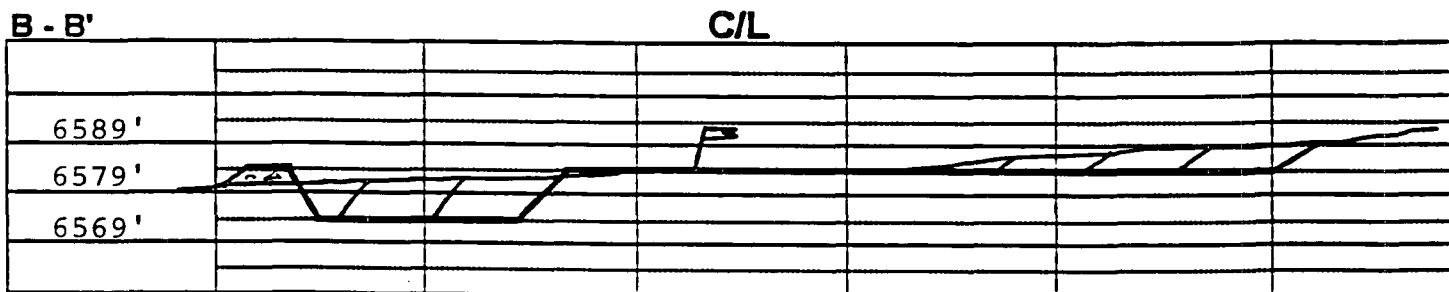
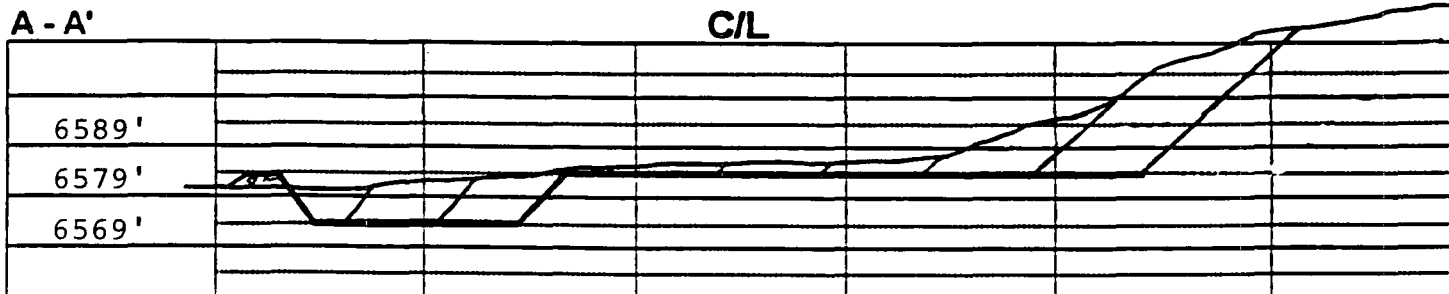
MERIDIAN OIL INC.  
 Pipeline Map  
 T-28-N, R-06-W  
 San Juan County, New Mexico  
 San Juan 28-6 Unit #210M  
 Map 1A

**PLAT #1**

NAME: San Juan 28-6 Unit #210M  
FOOTAGE: 1685' FNL, 900' FWL,  
SEC 31 TWN 28N N.R. 6W W NMPM  
CO: Rio Arriba ST: New Mexico,  
ELEVATION: 6579' DATE: 6/10/97



**Reserve Pit Dike:** to be 8' above Deep side (overflow - 3' wide and 1' above shallow side).  
**Blow Pit:** overflow pipe halfway between top and bottom and to extend over plastic liner and into blow pit.



**Note:** Contractor should call One-Call for location of any marked or unmarked buried pipelines or cables on well pad and/or access road at least two (2) working days prior to construction.



**BURLINGTON RESOURCES OIL AND GAS COMPANY**

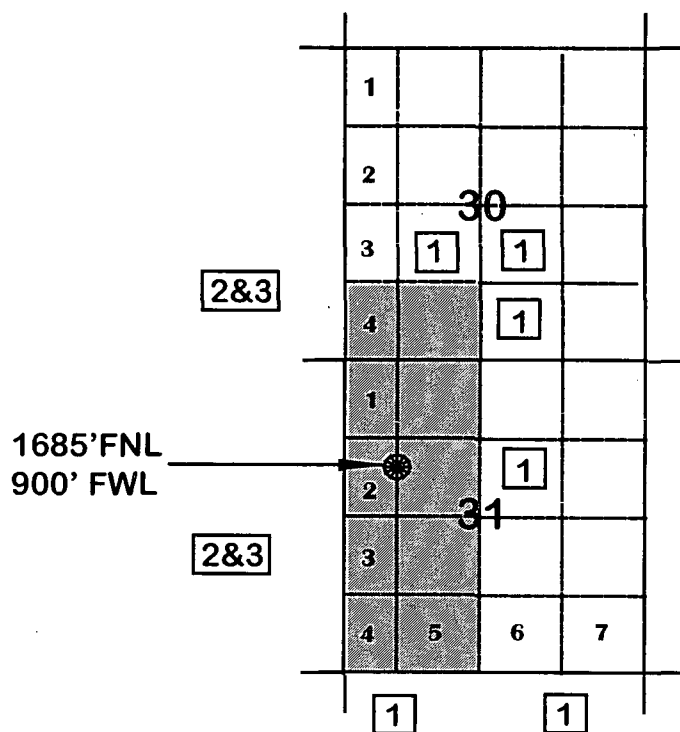
**SAN JUAN 28-6 UNIT #210M**

**OFFSET OPERATOR \ OWNER PLAT  
NONSTANDARD LOCATION**

**Mesaverde / Dakota Formations Well**

Mesaverde (W/2) / Dakota (Nonstandard dedication covering  
S/2SW/4 Sec. 30, W/2 Sec. 31)

Township 28 North, Range 6 West



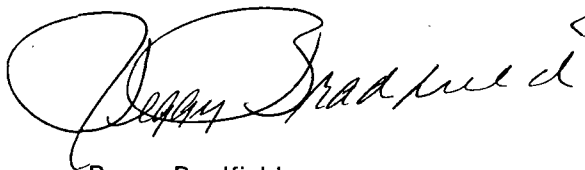
- 1) Burlington Resources Oil and Gas Company.
- 2) Amoco Production Company  
Bruce Zimney  
1670 Broadway  
P. O. Box 800  
Denver, Colorado 80201
- 3) Conoco  
10 Desta Drive, Suite 100W  
Midland, Texas 79705-4500

Re: San Juan 28-6 Unit #210M  
1685'FNL, 900'FWL, Section 31, T-28-N, R-6-W, Rio Arriba County  
API # 30-039-not yet assigned

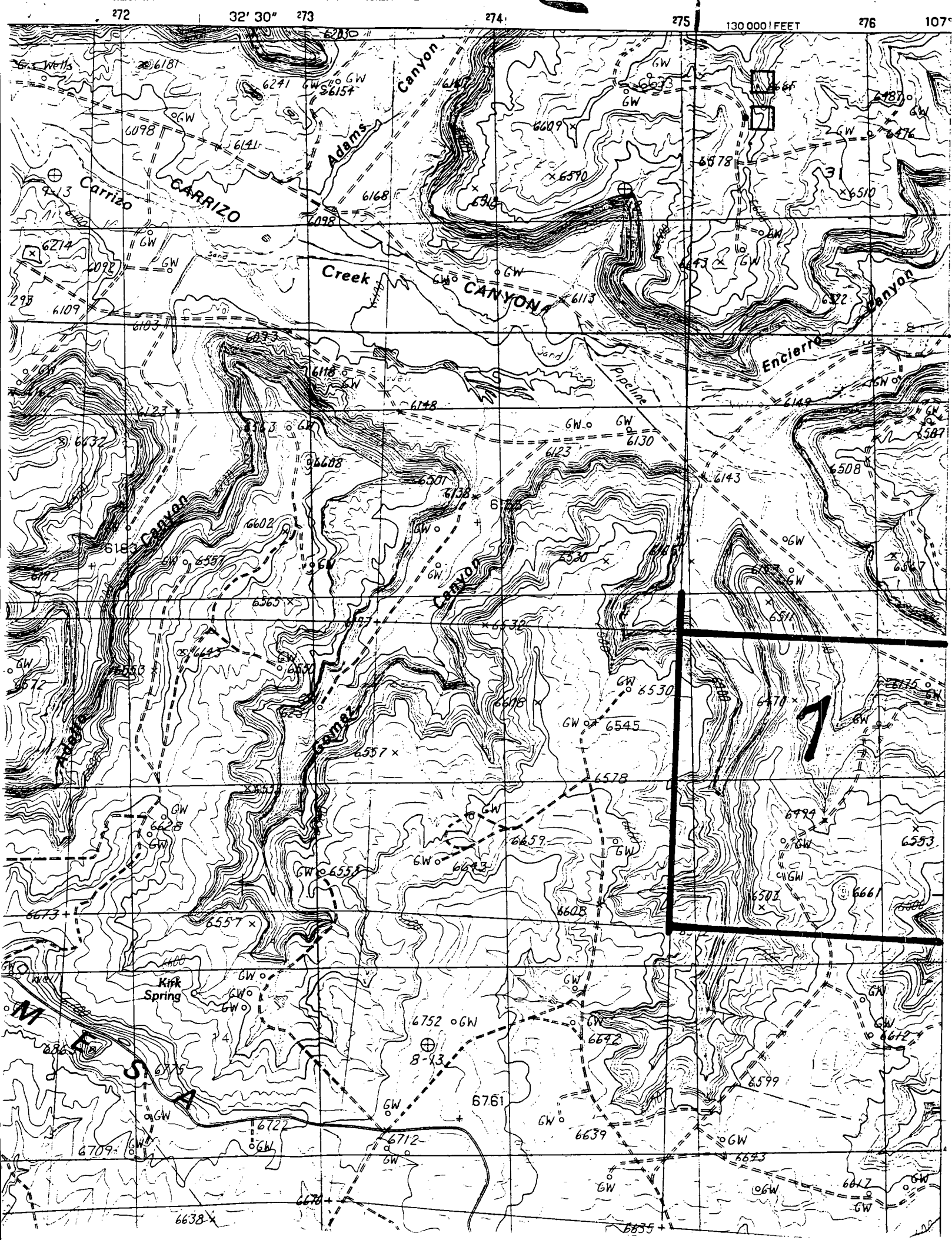
I hereby certify that the following offset operators/owners have been mailed notification of our application for non-standard location to drill the referenced well.

Amoco Production  
Att: Bruce Zimney  
PO Box 800  
Denver, CO 80201

Conoco Inc.  
10 Desta Drive, Suite 100W  
Midland, TX 79705-4500

A handwritten signature in black ink, appearing to read "Peggy Bradfield", with a large, stylized initial "P" and a flourish at the end.

Peggy Bradfield  
Regulatory/Compliance Administrator



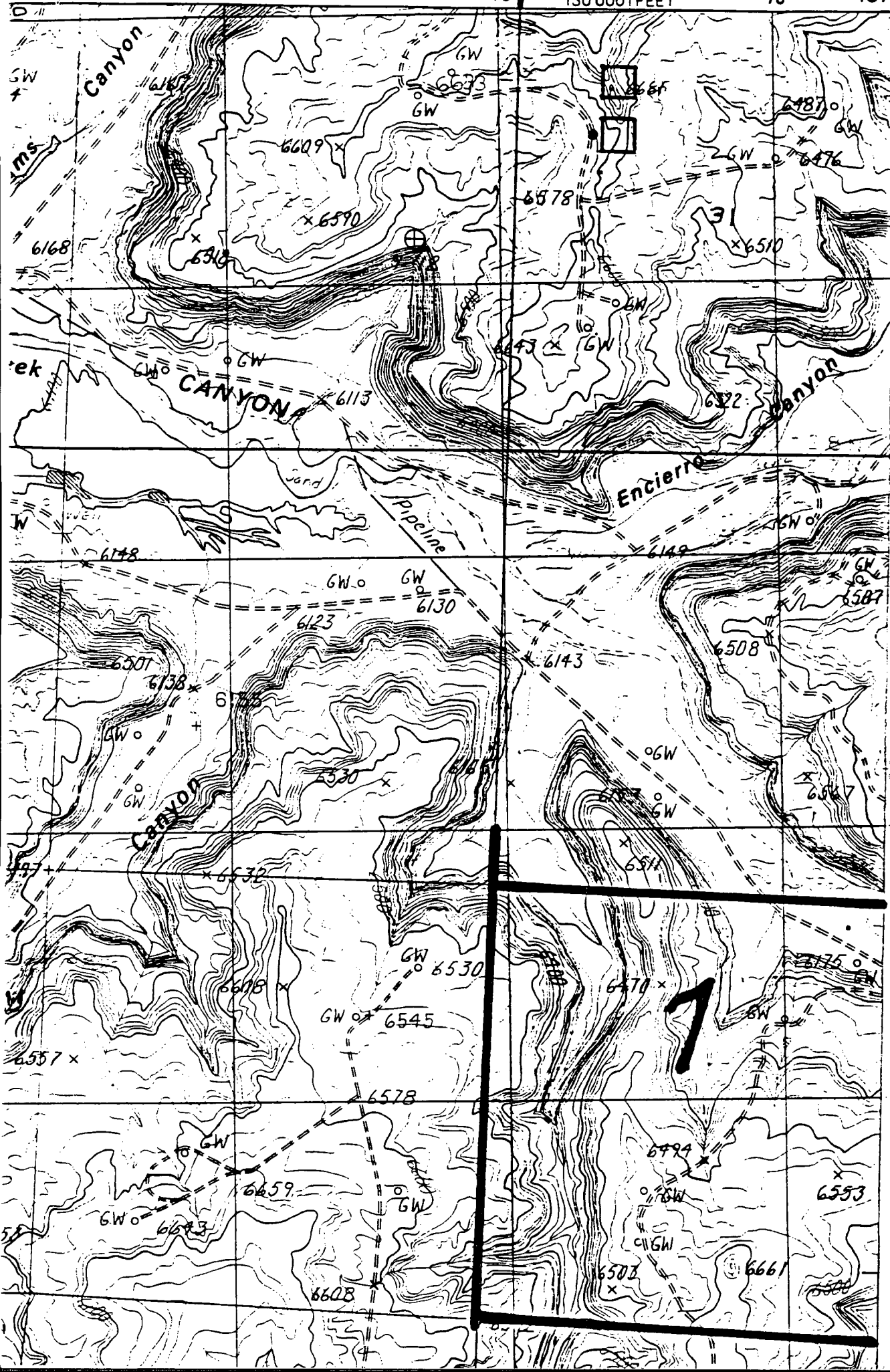
274

275

130 000 FEET

276

107°



District I  
PO Box 1980, Hobbs, NM 88241-1980

District II  
PO Drawer 00, Artesia, NM 88211-0719

District III  
1000 Rio Brazos Rd., Aztec, NM 87410

District IV  
PO Box 2088, Santa Fe, NM 87504-2088

State of New Mexico  
Energy, Minerals & Natural Resources Department

OIL CONSERVATION DIVISION  
PO Box 2088  
Santa Fe, NM 87504-2088

Form 1  
Revised February 21,  
Instructions on  
Submit to Appropriate District Office  
State Lease - 4 C  
Fee Lease - 3 C

☐ AMENDED REP

WELL LOCATION AND ACREAGE DEDICATION PLAT

*API Number 30-039-		*Pool Code 72319/71599	*Pool Name Blanco Mesaverde/Basin Dakota
*Property Code 7462	*Property Name San Juan 28-6 Unit		*Well Number 210M
*GRID No. 14538	*Operator Name BURLINGTON RESOURCES OIL & GAS COMPANY		*Elevation 6579'

<sup>10</sup>Surface Location

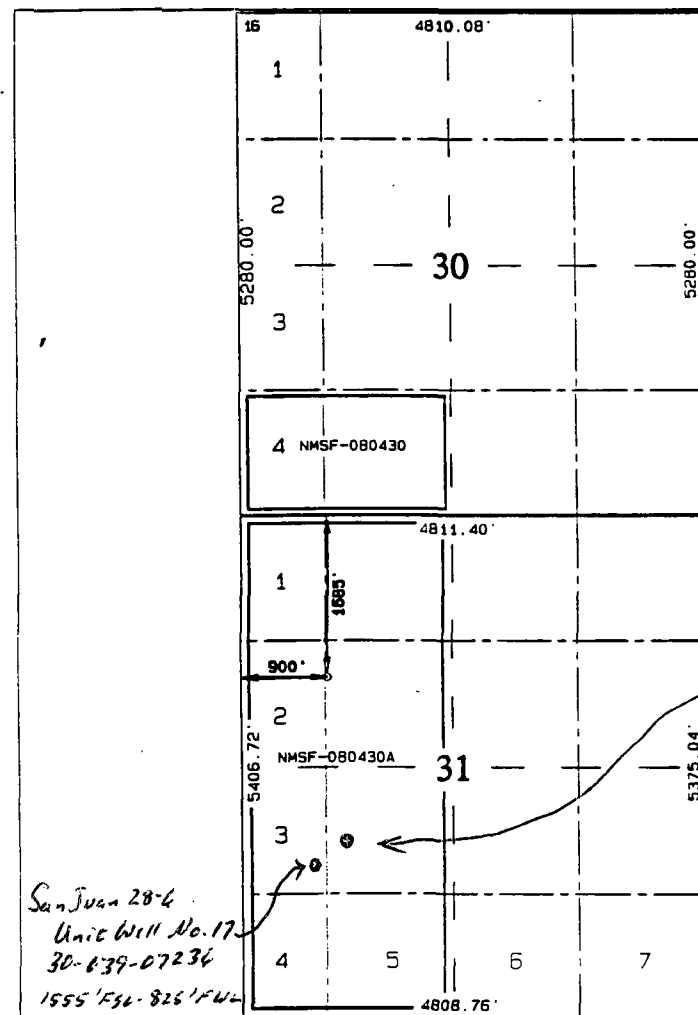
UL or lot no.	Section	Township	Range	Lot Idn	Feet from the	North/South line	Feet from the	East/West line	County
F	31	28N	6W		1685	North	900	West	Rio Arr

<sup>11</sup>Bottom Hole Location If Different From Surface

UL or lot no.	Section	Township	Range	Lot Idn	Feet from the	North/South line	Feet from the	East/West line	County

<sup>12</sup> Dedicated Acres MV-W 268.99 DK- 334.79	<sup>13</sup> Joint or Infill	<sup>14</sup> Consolidation Code	<sup>15</sup> Order No.
--	-------------------------------	----------------------------------	-------------------------

NO ALLOWABLE WILL BE ASSIGNED TO THIS COMPLETION UNTIL ALL INTERESTS HAVE BEEN CONSOLIDATED OR A NON-STANDARD UNIT HAS BEEN APPROVED BY THE DIVISION



San Juan 28-6  
Unit Well No. 17  
30-039-07236  
1555' ESE - 825' FWN

1/2 Sec. 31 Dedication  
Blanco Mesaverde

San Juan 28-6 Unit #210  
30-039-20841  
1650' ESE - 1190' FWN  
334.79-acre N50  
N-2948  
Dakota dedication

<sup>17</sup> OPERATOR CERTIFICATE  
I hereby certify that the information contained herein is true and complete to the best knowledge and belief

*Peggy Bradfield*  
Signature

Peggy Bradfield

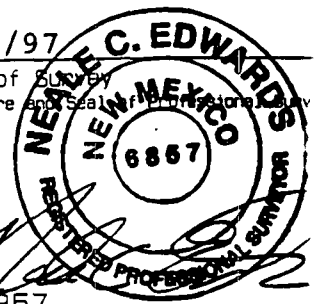
Printed Name

Regulatory Administrator  
Title

Date  
7-11-97

<sup>18</sup> SURVEYOR CERTIFICATE  
I hereby certify that the well location on this plat was plotted from field notes actual surveys made by me or under my supervision, and that the same is true correct to the best of my belief.

6/10/97  
Date of Survey  
Signature and Seal of Professional Surveyor



6857  
Certificate Number



STATE OF NEW MEXICO  
ENERGY, MINERALS AND NATURAL RESOURCES DEPARTMENT

OIL CONSERVATION DIVISION  
2040 S. PACHECO  
SANTA FE, NEW MEXICO 87505  
(505) 827-7131

*NSL-2PLS. 28*

March 24, 1997

Burlington Resources Oil & Gas Company  
P. O. Box 4289  
Farmington, New Mexico 87499-4289  
Attention: Peggy Bradfield

*Administrative Order NSL-3779*

Dear Ms. Bradfield:

Reference is made to your application dated January 28, 1997 for an unorthodox "infill" gas well location for both the Blanco-Mesaverde and Basin-Dakota Pools for the proposed San Juan "28-5" Unit Well No. 73-M to be drilled 765 feet from the South line and 2075 feet from the East line (Lot 2/Unit O) of Section 35, Township 28 North, Range 5 West, NMPM, Rio Arriba County, New Mexico.

Production from the Blanco-Mesaverde Pool is to be included in an existing standard 361.36-acre gas spacing and proration unit comprising Lots 1 through 4 and the N/2 S/2 (S/2 equivalent) of said Section 35 which is currently dedicated to Burlington Resources' San Juan "28-5" Unit Well No. 21 (API No. 30-039-07239), located at a standard gas well location 1650 feet from the South line and 1075 feet from the West line (Unit L) of said Section 35 and production from the Basin-Dakota Pool is to be included in an existing non-standard 330.92-acre gas spacing and proration unit (approved by Division Order No. R-2948, dated August 16, 1965) comprising Lot 2, the NE/4, and the N/2 SE/4 of said Section 35 and the NE/4 NE/4 of Section 36, Township 28 North, Range 5 West, NMPM, Rio Arriba County, New Mexico, which is currently dedicated to Burlington Resources' San Juan "28-5" Unit Well No. 73 (API No. 30-039-20036), located at a standard gas well location 1845 feet from the North and East lines (Unit G) of said Section 35.

By the authority granted me under the provisions of Rule 2(d) of the "*General Rules For The Prorated Gas Pools of New Mexico/Special Rules and Regulations For The Blanco-Mesaverde Pool/Special Rules and Regulations for the Basin-Dakota Pool*", as promulgated by Division Order No. R-8170, as amended, the above-described unorthodox "infill" gas well location for the San Juan "28-5" Unit Well No. 73-M is hereby approved.

Sincerely,

*WJL*  
William J. LeMay  
Director

WJL/MES/kv

cc: Oil Conservation Division - Aztec  
U. S. Bureau of Land Management - Farmington

CMD :  
OG5SECT

ONGARD  
INQUIRE LAND BY SECTION

09/16/97 17:28:02  
OGOMES -EMDQ  
PAGE NO: 2

Sec : 31 Twp : 28N Rng : 06W Section Type : **NORMAL**

3 25.75  Federal owned U A	K 40.00  Federal owned U A	J 40.00  Federal owned U	I 40.00  Federal owned U
4 28.14  Federal owned U	5 43.54  Federal owned U A	6 43.28  Federal owned U A	7 43.01  Federal owned U

PF01 **HELP**  
PF07 **BKWD**

PF02  
PF08 **FWD**

PF03 **EXIT**  
PF09 **PRINT**

PF04 **GoTo**  
PF10 **SDIV**

PF05  
PF11

PF06  
PF12

1  
43.54  
28.14  
71.68

1  
65.75  
~~28.14~~  
71.68  
137.43

CMD :  
OG5SECT

ONGARD  
INQUIRE LAND BY SECTION

09/16/97 17:56:18  
OGOMES -EMDQ  
PAGE NO: 1

Sec : 31 Twp : 28N Rng : 06W Section Type : **NORMAL**

1 25.79  Federal owned U	C 40.00  Federal owned U	B 40.00  Federal owned U	A 40.00  Federal owned U A
2 25.77  Federal owned U	F 40.00  Federal owned U	G 40.00  Federal owned U A A	H 40.00  Federal owned U

M0002: This is the first page

PF01 <b>HELP</b>	PF02	PF03 <b>EXIT</b>	PF04 <b>GoTo</b>	PF05	PF06
PF07 <b>BKWD</b>	PF08 <b>FWD</b>	PF09 <b>PRINT</b>	PF10 <b>SDIV</b>	PF11	PF12

65.79  
65.77  

---

131.56  
137.43  

---

268.99



CMD :  
OG5SECT

ONGARD  
INQUIRE LAND BY SECTION

09/16/97 17:56:55  
OGOMES -EMDQ  
PAGE NO: 1

Sec : 30 Twp : 28N Rng : 06W Section Type : NORMAL

1 25.76  Federal owned U	C 40.00  Federal owned U	B 40.00  Federal owned U	A 40.00  Federal owned U A
2 25.78  Federal owned U	F 40.00  Federal owned U	G 40.00  Federal owned U A A	H 40.00  Federal owned U

PF01 **HELP**  
PF07 **BKWD**

PF02  
PF08 **FWD**

PF03 **EXIT**  
PF09 **PRINT**

PF04 **GoTo**  
PF10 **SDIV**

PF05  
PF11

PF06  
PF12

CMD :  
OG5SECT

ONGARD  
INQUIRE LAND BY SECTION

09/16/97 17:56:59  
OGOMES -EMDQ  
PAGE NO: 2

Sec : 30 Twp : 28N Rng : 06W Section Type : NORMAL

3 25.78  Federal owned U	K 40.00  Federal owned U A	J 40.00  Federal owned U	I 40.00  Federal owned U A
4 25.80  Federal owned U A	N 40.00  Federal owned U	O 40.00  Federal owned U	P 40.00  Federal owned U

PF01 HELP  
PF07 BKWD

PF02  
PF08 FWD

PF03 EXIT  
PF09 PRINT

PF04 GoTo  
PF10 SDIV

PF05  
PF11

PF06  
PF12

268.99

65.80

334.79

BEFORE THE OIL CONSERVATION COMMISSION  
OF THE STATE OF NEW MEXICO

IN THE MATTER OF THE HEARING  
CALLED BY THE OIL CONSERVATION  
COMMISSION OF NEW MEXICO FOR  
THE PURPOSE OF CONSIDERING:

CASE No. 4042  
Order No. R-2948-A

APPLICATION OF EL PASO NATURAL GAS  
COMPANY FOR AN AMENDMENT TO ORDER  
NO. R-2948, RIO ARriba COUNTY, NEW  
MEXICO.

ORDER OF THE COMMISSION

BY THE COMMISSION:

This cause came on for hearing at 9 a.m. on February 5, 1969,  
at Santa Fe, New Mexico, before Examiner Daniel S. Nutter.

NOW, on this 11th day of February, 1969, the Commission, a  
quorum being present, having considered the testimony, the record,  
and the recommendations of the Examiner, and being fully advised  
in the premises,

FINDS:

(1) That due public notice having been given as required by  
law, the Commission has jurisdiction of this cause and the subject  
matter thereof.

(2) That by Order No. R-2948, dated August 16, 1965, the  
Commission approved several non-standard gas proration units in  
the Basin-Dakota Gas Pool, Rio Arriba County, New Mexico, among  
them the following:

TOWNSHIP 28 NORTH, RANGE 6 WEST, NMPM

Unit	Acres	Description
12	325.59	Section 33: W/2
13	325.02	Section 33: E/2

-2-

CASE No. 4042

Order No. R-2948-A

TOWNSHIP 28 NORTH, RANGE 7 WEST, NMPM

Unit	Acres	Description
16	324.70	Section 35: W/2
17	327.70	Section 35: E/2

(3) That the applicant, El Paso Natural Gas Company, now seeks amendment of Order No. R-2948 to change the acreage dedication comprising the above-described non-standard gas proration units to comprise the following acreage:

TOWNSHIP 28 NORTH, RANGE 6 WEST, NMPM

Unit	Acres	Description
12	320	Section 33: N/2
13	330.71	Section 33: S/2

TOWNSHIP 28 NORTH, RANGE 7 WEST, NMPM

Unit	Acres	Description
16	320	Section 35: N/2
17	332.40	Section 35: S/2

(4) That the N/2 of said Section 33 has been admitted to the participating area for the Dakota formation of the San Juan 28-6 Unit.

(5) That the S/2 of said Section 35 has been admitted to the participating area for the Dakota formation of the San Juan 28-7 Unit.

(6) That each participating area should coincide with a proration unit.

(7) That approval of the subject application will allow each of the aforesaid participating areas to coincide with a proration unit and will afford the applicant the opportunity

CASE No. 4042

Order No. R-2948-A

to produce its just and equitable share of the gas in the Basin-Dakota Gas Pool and will otherwise prevent waste and protect correlative rights.

IT IS THEREFORE ORDERED:

(1) That Order No. R-2948, dated August 16, 1965, is hereby amended by deleting therefrom the following-described non-standard gas proration units in the Basin-Dakota Gas Pool, Rio Arriba County, New Mexico:

TOWNSHIP 28 NORTH, RANGE 6 WEST, NMPM

Unit	Acres	Description
12	325.59	Section 33: W/2
13	325.02	Section 33: E/2

TOWNSHIP 28 NORTH, RANGE 7 WEST, NMPM

Unit	Acres	Description
16	324.70	Section 35: W/2
17	327.70	Section 35: E/2

and substituting in lieu thereof the following-described gas proration units:

TOWNSHIP 28 NORTH, RANGE 6 WEST, NMPM

Unit	Acres	Description
12	320	Section 33: N/2
13	330.71	Section 33: S/2

TOWNSHIP 28 NORTH, RANGE 7 WEST, NMPM

Unit	Acres	Description
16	320	Section 35: N/2
17	332.40	Section 35: S/2

-4-

CASE No. 4042

Order No. R-2948-A

(2) That jurisdiction of this cause is retained for the entry of such further orders as the Commission may deem necessary.

DONE at Santa Fe, New Mexico, on the day and year hereinabove designated.

STATE OF NEW MEXICO  
OIL CONSERVATION COMMISSION

DAVID F. CARGO, Chairman

ALEX J. ARMIJO, Member

A. L. PORTER, Jr., Member & Secretary

S E A L

esr/

BEFORE THE OIL CONSERVATION COMMISSION  
OF THE STATE OF NEW MEXICO

IN THE MATTER OF THE HEARING  
CALLED BY THE OIL CONSERVATION  
COMMISSION OF NEW MEXICO FOR  
THE PURPOSE OF CONSIDERING:

CASE No. 3272  
Order No. R-2948

APPLICATION OF EL PASO NATURAL GAS  
COMPANY FOR NON-STANDARD GAS PRORA-  
TION UNITS, BASIN-DAKOTA GAS POOL,  
RIO ARriba COUNTY, NEW MEXICO.

ORDER OF THE COMMISSION

BY THE COMMISSION:

This cause came on for hearing at 9 o'clock a.m. on June 30, 1965, at Santa Fe, New Mexico, before Examiner Daniel S. Nutter.

NOW, on this 16th day of August, 1965, the Commission, a quorum being present, having considered the testimony, the record, and the recommendations of the Examiner, and being fully advised in the premises,

FINDS:

(1) That due public notice having been given as required by law, the Commission has jurisdiction of this cause and the subject matter thereof.

(2) That the applicant, El Paso Natural Gas Company, seeks approval of 51 non-standard gas proration units in the Basin-Dakota Gas Pool, Rio Arriba County, New Mexico, in the following area:

TOWNSHIP 28 NORTH, RANGE 5 WEST, NMPM  
Sections 7 through 13, 24 and 25, and  
33 through 36

TOWNSHIP 28 NORTH, RANGE 6 WEST, NMPM  
Sections 7 through 12, 18 and 19, and  
30 through 34

TOWNSHIP 28 NORTH, RANGE 7 WEST, NMPM  
Sections 7 through 12, 18 and 19, and  
30 through 36

(3) That a standard gas proration unit in the Basin-Dakota Gas Pool consists of 320 acres, and that each of the proposed non-standard units exceeds 320 acres.

(4) That non-standard units are necessary in the subject area due to variations in legal subdivisions of the U. S. Public Land Survey.

(5) That the non-standard units created in the subject area should approximate 320 acres, insofar as is practicable, in order to afford to the owner of each property in the Basin-Dakota Gas Pool the opportunity to produce his just and equitable share of the gas in the pool, and otherwise prevent waste and protect correlative rights.

(6) That non-standard gas proration units approximating 320 acres, insofar as is practicable, should be created in the subject area, and that the subject application should otherwise be denied.

IT IS THEREFORE ORDERED:

(1) That the following-described non-standard gas proration units in the Basin-Dakota Gas Pool are hereby approved:

RIO ARRIBA COUNTY, NEW MEXICO  
TOWNSHIP 28 NORTH, RANGE 5 WEST, NMPM

Unit	Acres	Description
1	322.96	Section 7: Lots 1, 2, 3, and 4 and S/2 S/2 Section 8: SW/4 SW/4
2	313.42	Section 8: Lots 1, 2, 3, and 4, SE/4 SW/4, and S/2 SE/4 Section 9: Lot 4 and SW/4 SW/4
3	322.35	Section 9: Lots 1, 2, and 3, SE/4 SW/4, and S/2 SE/4 Section 10: Lot 4 and S/2 SW/4
4	321.61	Section 10: Lots 1, 2, and 3 and S/2 SE/4 Section 11: Lot 4, S/2 SW/4, and SW/4 SE/4



-3-

CASE No. 3272

Order No. R-2948

TOWNSHIP 28 NORTH, RANGE 5 WEST, NMPM (CONT.)

Unit	Acres	Description
5	310.19	Section 11: Lots 1, 2, and 3 and SE/4 SE/4 Section 12: Lots 3 and 4, S/2 SW/4, and SW/4 SE/4
6	342.30	Section 12: Lots 1, 2, and 5 Section 13: Lots 1 and 2, W/2 NE/4, and NW/4 SE/4
7	327.36	Section 13: Lots 3 and 4 and SW/4 SE/4 Section 24: Lots 1 and 2 and W/2 NE/4
8	329.09	Section 24: Lots 3 and 4 and W/2 SE/4 Section 25: Lots 1 and 2 and NW/4 NE/4
9	316.76	Section 25: Lots 3 and 4, SW/4 NE/4 and W/2 SE/4 Section 36: Lot 1 and NW/4 NE/4
10	330.74	Section 36: Lots 2, 3, 5, 6, 7, and 8 and NW/4 SE/4
11	345.39	Section 36: Lot 4, NE/4 NW/4, S/2 NW/4, SW/4 NE/4, and N/2 SW/4 Section 35: Lot 1
12	330.92	Section 36: NW/4 NW/4 Section 35: Lot 2, NE/4, and N/2 SE/4
13	345.82	Section 35: Lots 3 and 4, NE/4 NW/4, S/2 NW/4, and N/2 SW/4 Section 34: Lot 1
14	326.42	Section 35: NW/4 NW/4 Section 34: Lot 2, NE/4, and N/2 SE/4
15	329.70	Section 34: W/2
16	325.46	Section 33: E/2

-4-

CASE No. 3272

Order No. R-2948

TOWNSHIP 28 NORTH, RANGE 6 WEST, NMPM

Unit	Acres	Description
1	353.10	Section 12: Lots 1, 2, 3, and 4 and S/2 S/2 Section 11: Lot 1 and SE/4 SE/4
2	353.83	Section 11: Lots 2, 3, and 4, S/2 SW/4, and SW/4 SE/4 Section 10: Lots 1 and 2 and S/2 SE/4
3	354.79	Section 10: Lots 3 and 4 and S/2 SW/4 Section 9: Lots 1, 2, and 3, SE/4 SW/4, and S/2 SE/4
4	356.16	Section 9: Lot 4 and SW/4 SW/4 Section 8: Lots 1, 2, 3, and 4 and S/2 S/2
5	326.18	Section 7: Lots 1, 2, 3, 4, and 5, SE/4 SW/4, and S/2 SE/4 Section 18: Lot 1 and NE/4 NW/4
6	328.37	Section 18: Lots 2, 3, and 4, SE/4 NW/4, and E/2 SW/4 Section 19: Lots 1 and 2 and E/2 NW/4
7	328.77	Section 19: Lots 3 and 4 and E/2 SW/4 Section 30: Lots 1, 2, and 3, E/2 NW/4, and NE/4 SW/4
8	334.79	Section 30: Lot 4 and SE/4 SW/4 Section 31: Lots 1, 2, 3, 4, and 5, E/2 NW/4, and NE/4 SW/4
9	326.29	Section 31: E/2
10	325.23	Section 32: W/2
11	325.04	Section 32: E/2
12	325.59	Section 33: W/2
13	325.02	Section 33: E/2
14	324.69	Section 34: W/2
15	324.63	Section 34: E/2

-5-

CASE No. 3272

Order No. R-2948

TOWNSHIP 28 NORTH, RANGE 7 WEST, NMPM

Unit	Acres	Description
1	321.22	Section 12: Lots 1, 2, 3, and 4 and S/2 S/2 Section 11: Lot 1
2	333.76	Section 11: Lots 2, 3, and 4 and S/2 S/2 Section 10: Lot 1 and SE/4 SE/4
3	331.55	Section 10: Lots 2, 3, and 4, S/2 SW/4, and SW/4 SE/4 Section 9: Lots 1 and 2 and SE/4 SE/4
4	338.02	Section 9: Lots 3 and 4, S/2 SW/4, and SW/4 SE/4 Section 8: Lots 1, 2, and 3 and SE/4 SE/4
5	313.00	Section 8: Lot 4, S/2 SW/4, and SW/4 SE/4 Section 7: Lot 1, SE/4 SW/4, and S/2 SE/4
6	331.11	Section 7: Lots 2, 3, 4, and 5 Section 18: Lots 1, 2, and 3 and E/2 NW/4
7	345.30	Section 18: Lot 4 and E/2 SW/4 Section 19: Lots 1, 2, and 3, E/2 NW/4, and NE/4 SW/4
8	342.17	Section 19: Lot 4 and SE/4 SW/4 Section 30: Lots 1, 2, 3, and 4, E/2 NW/4, and NE/4 SW/4
9	316.50	Section 30: SE/4 SW/4 Section 31: Lot 1, E/2 NW/4, and NE/4
10	339.73	Section 31: Lots 2, 3, 4, 5, 6, and 7, NE/4 SW/4, and N/2 SW/4
11	315.36	Section 32: W/2
12	315.68	Section 32: E/2
13	316.00	Section 33: W/2
14	316.32	Section 33: E/2

-6-

CASE No. 3272

Order No. R-2948

TOWNSHIP 28 NORTH, RANGE 7 WEST, NMPM (CONT.)

Unit	Acres	Description
15	318.40	Section 34: W/2
16	324.70	Section 35: W/2
17	327.70	Section 35: E/2
18	328.82	Section 36: W/2
19	328.06	Section 36: E/2

(2) That the subject application is otherwise hereby denied.

(3) That jurisdiction of this cause is retained for the entry of such further orders as the Commission may deem necessary.

DONE at Santa Fe, New Mexico, on the day and year hereinabove designated.

STATE OF NEW MEXICO  
OIL CONSERVATION COMMISSION

JACK M. CAMPBELL, Chairman

GUYTON B. HAYS, Member

S E A L

A. L. PORTER, JR., Member & Secretary

esr/