

GW - 242

**GENERAL
CORRESPONDENCE**

2008 - 2010



Enterprise Products™

RECEIVED

ENTERPRISE PRODUCTS PARTNERS LP
ENTERPRISE PRODUCTS OPERATING LLC

2008 DEC 16 10:12 AM
ENTERPRISE PRODUCTS GP, LLC, GENERAL PARTNER
ENTERPRISE PRODUCTS OLP GP, INC., SOLE MANAGER

December 2, 2008

Return Receipt Requested
7008 1140 0004 9601 6320

Jim Griswold, Hydrologist
Environmental Bureau
New Mexico Oil Conservation Division
1220 S. St. Frances Drive
Santa Fe, NM 87505

**Re: Enterprise Field Services – South Burton Flats Compressor Station
Discharge Plan GW-242**

Dear Mr. Griswold:

This submittal is in response to a letter dated September 15, 2008 from the New Mexico Oil Conservation Commission (NMOCD). On August 27, 2008 NMOCD inspector Leonard Lowe and Jennifer Corser visited what initially was thought to be the Enterprise South Burton Flats (GW-242) Compressor Station. Upon further review, it was discovered the site that was visited was the former Burton Flats Gas Plant site (GW-13). The Burton Flats Gas Plant site has previously received closure from the NMOCD via a letter dated November 13, 2008 signed by NMOCD representative, Roger Anderson. (Attached)

The NMOCD subsequently requested that Enterprise Field Services LLC (Enterprise) submit photographs of the South Burton Flats (GW-242) site. These photographs are attached. In these photos you will see that there is no concrete or stained soil. The fenced off corner of the site contains 4 inch pipe which is connected to an active lateral pipeline. The fence serves to protect the aboveground piping. Enterprise requests closure of GW-242.

If you have questions or require additional information, please contact Jennifer Corser, Field Environmental Scientist at (432) 230-1414 or me directly at (713) 880-6518.

Yours truly,

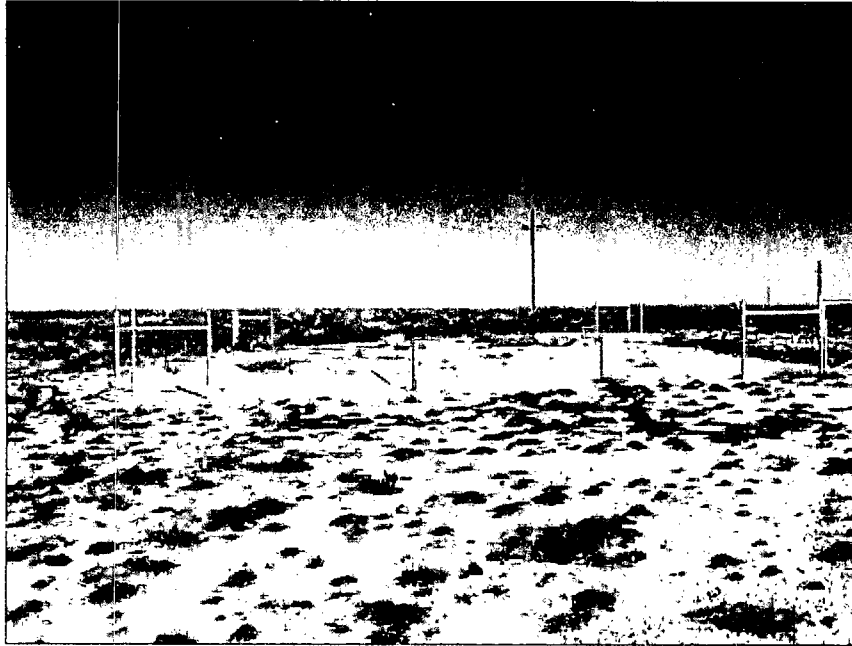
Mary E. Hebert
Director, Environmental Compliance

MEH/JC/sn

cc: David Jaquez

Attachment

**Photograph taken on October 18, 2008(by Enterprise)-
South Burton Flats Compressor Station GW-242**





NEW MEXICO ENERGY, MINERALS and NATURAL RESOURCES DEPARTMENT

GARY E. JOHNSON
Governor
Jennifer A. Salisbury
Cabinet Secretary

Lori Wrotenbery
Director
Oil Conservation Division

November 15, 2000

CERTIFIED MAIL
RETURN RECEIPT NO. 3771-6937

Mr. David Bays
El Paso Field Services Co.
614 Reilly Avenue
Farmington, NM 87401

Re: **EPFS Burton Flats Cryogenic Plant**
GW - 013

Dear Mr. Bays:

The New Mexico Oil Conservation Division (NMOCD) has received a copy of the closure report prepared for you by Agra Earth and Environmental, Inc. for the above named facility covered by your letter dated September 16, 2000. On August 9, 2000 NMOCD performed an inspection of the site (inspection report copy enclosed). NMOCD understands that the plant equipment will remain on the site for the foreseeable future and that further investigation of the extent of the contamination is impractical due to the presence of the equipment.

The NMOCD hereby approves the closure report under the following condition:

El Paso Field Services will notify the NMOCD district office in Artesia upon:

1. Removal of the remaining plant equipment or
2. Resuming plant operations

In light of the above, the NMOCD has closed the discharge plan (GW-013) for the facility and classified the facility as inactive.

U.S. Postal Service
CERTIFIED MAIL RECEIPT
(Domestic Mail Only. No Insurance Coverage Provided)

7000 050 0000 0021 6937 1937

Postage	\$
Certified Fee	
Return Receipt Fee (Endorsement Required)	
Restricted Delivery Fee (Endorsement Required)	
Total Postage & Fees	\$

Postmark Here

Recipient's Name (Please Print Clearly) (To be completed by mailer)
DAVID BAYS
Street, Apt. No., or PO Box No.
614 REILLY AV.
City, State, ZIP+4
FARMINGTON, NM 87401

US Form 3800, February 2000 See Reverse for Instructions

GW-013 EN

Mr. David Bays
GW-013 Burton Flats Cryogenic Plant
Page 2 of 2

NMOCD approval does not relieve El Paso Field Services of liability if their operations have caused contamination that poses a threat to groundwater, surface water, human health or the environment. Nor does it relieve El Paso Field Services of its obligation to comply with any other governmental rules or regulations.

Sincerely yours,

A handwritten signature in dark ink, appearing to read "Roger C. Anderson", with a long horizontal flourish extending to the right.

Roger C. Anderson
Environmental Bureau

Cc: OCD Artesia District Office



Enterprise Products™

**ENTERPRISE PRODUCTS PARTNERS LP
ENTERPRISE PRODUCTS OPERATING LLC**

**ENTERPRISE PRODUCTS GP, LLC, GENERAL PARTNER
ENTERPRISE PRODUCTS OLPGP, INC., SOLE MANAGER**

February 12, 2008

Federal Express
8623-6902 6207

Brad A. Jones, Environmental Engineer
Environmental Bureau
New Mexico Oil Conservation Division
1220 S. St. Francis Drive
Santa Fe, New Mexico 87505

**Re: Discharge Plan GW-242 Closure Report
"z" Burton Flats South Compressor Station**

Dear Mr. Jones:

In accordance with conditions of the above ground water discharge plan GW-242, Enterprise Field Services LLC (Enterprise) is providing notice that the above-referenced compressor station is no longer in operation and respectfully requests that this plan be closed. In keeping with your instructions, Enterprise conducted an inspection of the compressor station on January 31, 2007, and certifies that the compressor has been removed and that no visual evidence of environmental contamination exists.

The site is surrounded by fencing and the only notable above ground features include some above-ground piping and some earthen containment berms within which the compressor was formerly located. Included as attachments are a site location map and photographs of the facility taken during the site reconnaissance by our environmental field representative.

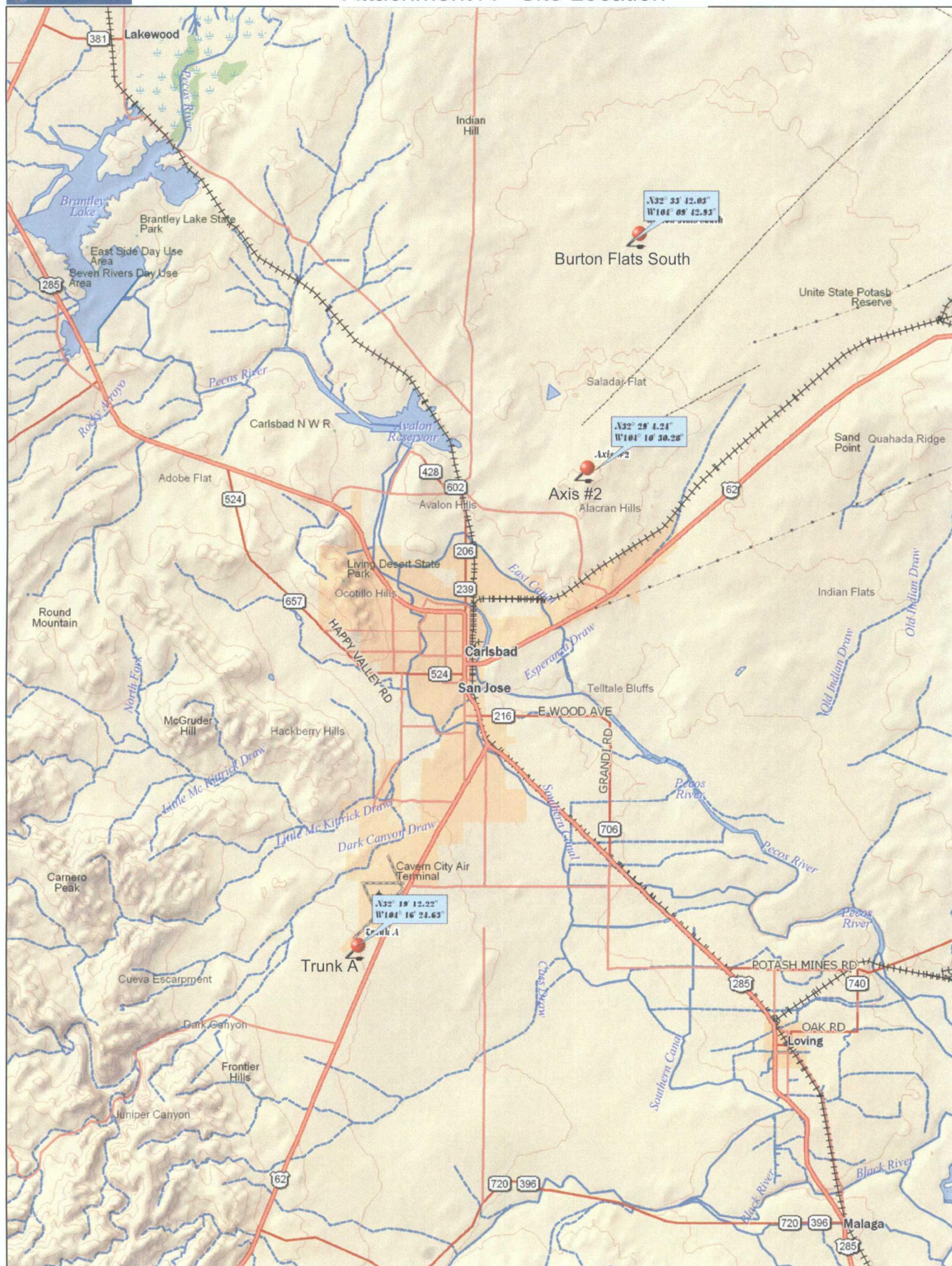
If you have questions or need additional information concerning this project, please contact David O'Leary, our environmental field representative at 432-212-3490, or me directly at 713-880-6518.

Yours truly,

Mary E. Hebert
Director, Field Environmental

/sjn

cc: David Jaquez, Carlsbad
Kenneth Ragsdale, Monahans
Derrell Morrow, Midland



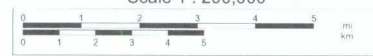
Data use subject to license.

© 2006 DeLorme. Topo USA® 6.0.

www.delorme.com



Scale 1 : 200,000



1" = 3.16 mi

Data Zoom 10-0

Attachment B – Burton Flats South Site Photos

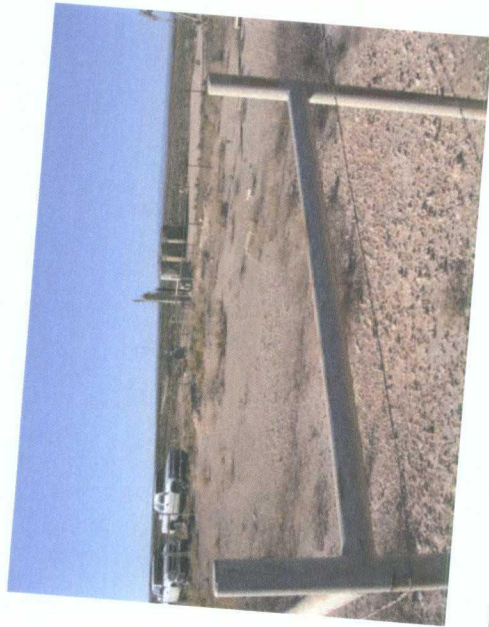


Photo 1 – Burton Flats Site (fenced area)

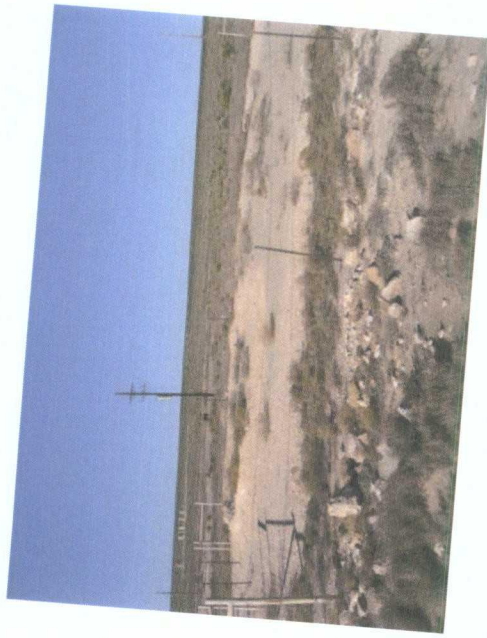


Photo 2 – Compressor Pad (top L corner of fenced area)



Photo 3 – Compressor Site Close-up (foreground)

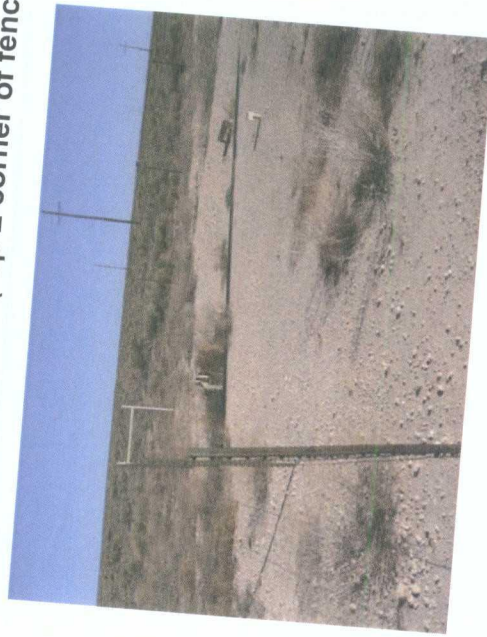


Photo 4 – Idled Above-Ground Piping

Griswold, Jim, EMNRD

From: Lowe, Leonard, EMNRD
Sent: Thursday, October 09, 2008 4:03 PM
To: Griswold, Jim, EMNRD
Subject: FW: GW-242, Burton Flats

I have not scanned this.

From: Corser, Jennifer [mailto:JHCORSER@epco.com]
Sent: Monday, October 06, 2008 4:25 PM
To: Lowe, Leonard, EMNRD
Subject: RE: GW-242, Burton Flats

GW 242 is for the "real" Burton Flats South CS.

The location you visited is GW-013; I finally found then location on your website. There is a letter dated November 15, 2000 from the NMOCD granting closure at this facility. The link to this letter is below <http://ocdimage.emnrd.state.nm.us/imaging/AEOrderFileView.aspx?appNo=pENV000GW00014>

As far as GW-242, this location is ready for closure. I will follow-up with photos reflecting that all concrete and piping has been removed.

Thanks Leonard. Please call me if you have any questions.

From: Lowe, Leonard, EMNRD [mailto:Leonard.Lowe@state.nm.us]
Sent: Wednesday, October 01, 2008 11:02 AM
To: Corser, Jennifer
Subject: RE: GW-242, Burton Flats

GW-242 (as noted in the subject line) llowe

From: Corser, Jennifer [mailto:JHCORSER@epco.com]
Sent: Wednesday, October 01, 2008 9:57 AM
To: Lowe, Leonard, EMNRD
Cc: Griswold, Jim, EMNRD
Subject: RE: GW-242, Burton Flats

Does the OCD have a GW# for this location? I cannot locate one on my end.

From: Lowe, Leonard, EMNRD [mailto:Leonard.Lowe@state.nm.us]
Sent: Wednesday, October 01, 2008 10:45 AM
To: Corser, Jennifer
Cc: Griswold, Jim, EMNRD
Subject: GW-242, Burton Flats

Ms. Jennifer Corser,

The OCD was informed after the inspections done on the four 'closure' facilities on August 27, 2008 that the wrong facility was inspected for the Burton Flats area.

The OCD will be expecting an update on this closure facility once all items are removed.

10/9/2008

The OCD request that all above ground tubing/piping that is not in use to be removed from the area; to remove all remaining concrete slabs; to remediate any contamination on site; remove any unused equipment.

If you have any further questions please contact Mr. Jim Griswold or myself on these concerns.

Thank you for your attention.

llowe

Leonard Lowe

Environmental Engineer
Oil Conservation Division/EMNRD
1220 S. St. Francis Drive
Santa Fe, N.M. 87505
Office: 505-476-3492
Fax: 505-476-3462
E-mail: leonard.lowe@state.nm.us
Website: <http://www.emnrd.state.nm.us/oecd/>

Confidentiality Notice: This e-mail, including all attachments is for the sole use of the intended recipient (s) and may contain confidential and privileged information. Any unauthorized review, use, disclosure or distribution is prohibited unless specifically provided under the New Mexico Inspection of Public Records Act. If you are not the intended recipient, please contact the sender and destroy all copies of this message. -- This email has been scanned by the Sybari - Antigen Email System.

This inbound email has been scanned by the MessageLabs Email Security System.

Confidentiality Notice: This e-mail, including all attachments is for the sole use of the intended recipient (s) and may contain confidential and privileged information. Any unauthorized review, use, disclosure or distribution is prohibited unless specifically provided under the New Mexico Inspection of Public Records Act. If you are not the intended recipient, please contact the sender and destroy all copies of this message. -- This email has been scanned by the Sybari - Antigen Email System.

This inbound email has been scanned by the MessageLabs Email Security System.
