

pKRV0304956847

NSL 3/10/03



RECEIVED

KOCH EXPLORATION COMPANY LLC

FEB 18 2003

February 14, 2003

OIL CONSERVATION
DIVISION

MS

New Mexico Oil Conservation Division
1220 South St., Francis Drive
Santa Fe, NM 87505

Re: Proposed Well
Christina Com #30-1-A
W/2 Section 30-T28N-R10W
San Juan County, New Mexico

Attn: Mr. Mike Stogner:

Koch Exploration Company, LLC (Koch) has proposed the drilling of a Coalbed Methane well in the W/2 Section 30-T28N-R10W as an infill Fruitland coalbed methane well. The proposed location is not located within the coalbed methane fairway area. Because of topography, we were unable to stake the well anywhere in the NW/4 except at a location being 290 feet from the north line and 865 feet from the west line. The location makes the well an unorthodox location pursuant to New Mexico Conservation Division Order No. R-8768-C.

To support this application, we have enclosed the following:

1. Topographical map showing the location
2. Copy of Certified Letter dated February 13, 2003 to offset Fruitland coalbed well Operators (Burlington Resources)
3. Map depicting the Fruitland Coalbed well operators within a one mile radius of the location
4. There was no original proposed location and the BLM was with the team when the well was staked.
5. Plat showing the staked location and federal lease numbers
6. Copy of Application for Permit to Drill or Reenter provided to the BLM

Koch requests you review the enclosed and if all is in order and after the 20 day waiting period or our furnishing the executed waiver from Burlington Resources, approve our request for the unorthodox location for the Christina Com #30-1-A well. The undersigned can be reached at 713 544-7414 or fax 713 544-6161. Don Johnson, Field Supervisor can be reached at 505 334-9111. Thank you for your cooperation.

Yours truly,

Lance F. Harmon
Vice President- Land

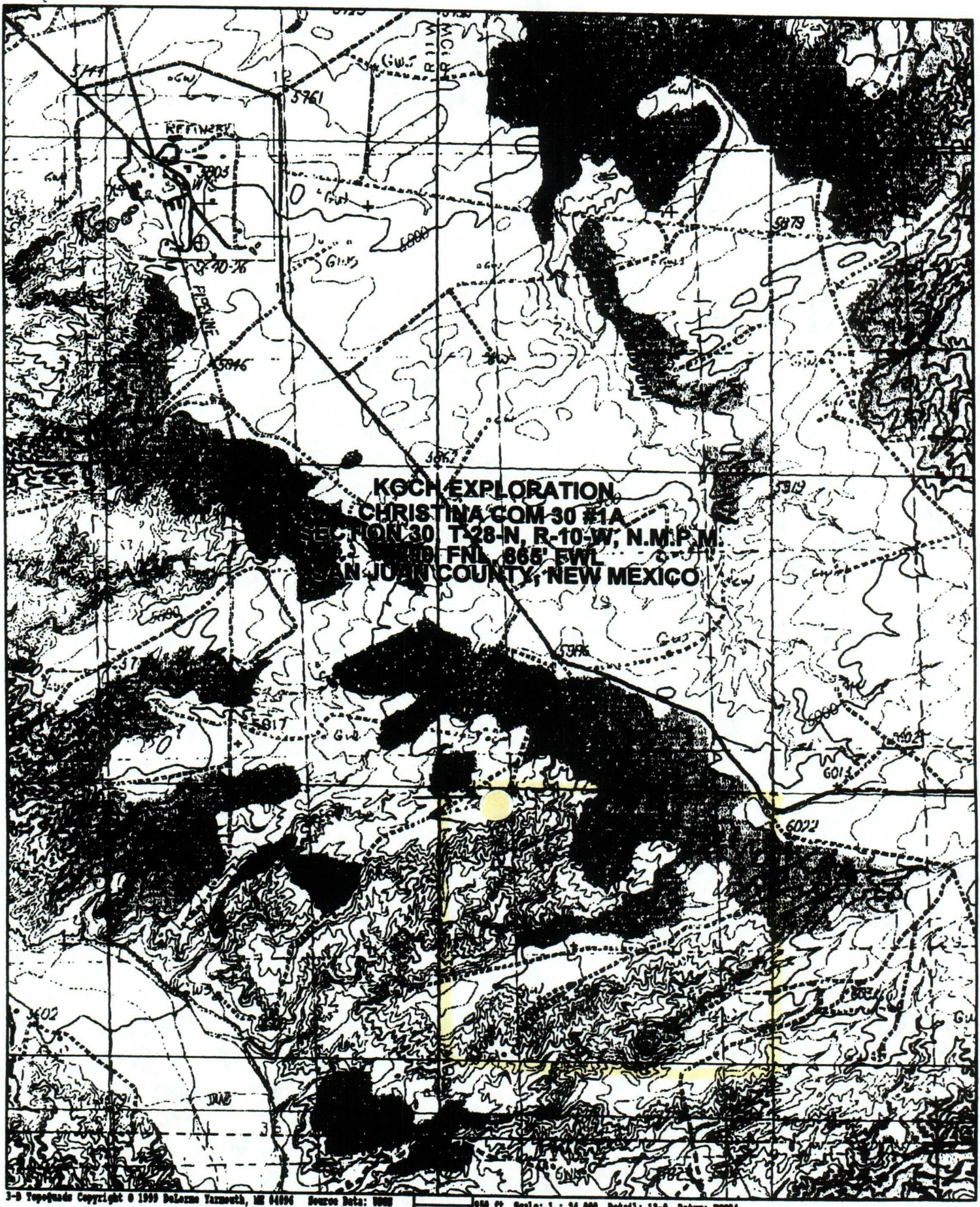


Exhibit A



KOCH EXPLORATION COMPANY LLC

February 13, 2003

Burlington Resources
San Juan Division
3401 E. 30th Street
Farmington, NM 87402

Re: Christina Com #30-1-A well
W/2 Section 30-T28N-R10W
San Juan County, New Mexico

Attn: Mr. James R. J. Strickler

Dear James:

Koch Exploration Company, LLC (Koch) plans to drill a Fruitland coalbed methane well in the NW/4 Section 30-T28N-R10W. Due to topographic restrictions, the well has been staked 290 feet from North line and 865 feet from the West line which constitutes an unorthodox location pursuant to New Mexico Conservation Division Order No. R-8768-C.

As a result, Koch is notifying all operators of proration or spacing units within a mile of this location in the Northwest Quarter of Section 30-T28N-R10W, and request that you indicate below your waiver of any objection to Koch's unorthodox location. It appears that Burlington Resources operates the existing coalbed wells within the one mile radius.

Should you have any questions, please call the undersigned at 713 544-7414.

Yours truly,



Lance F. Harmon
Vice President - Land

Burlington Resources

By: _____

cc: New Mexico Oil Conservation Commission
1000 Rio Brazos Rd
Aztec, NM 87410

DISTRICT I
P.O. Box 1000, Hobbs, N.M. 88241-1000

DISTRICT II
811 South First, Artesia, N.M. 88210

DISTRICT III
1000 Elie Braces Rd., Anton, N.M. 87410

DISTRICT IV
2540 South Pacheco, Santa Fe, NM 87504-2088

State of New Mexico
Energy, Minerals & Natural Resources Department

OIL CONSERVATION DIVISION

P.O. Box 2088
Santa Fe, NM 87504-2088

Form C-102
Revised February 21, 1994
Instructions on back
Submit to Appropriate District Office
State Lease - 4 Copies
Fee Lease - 3 Copies

☐ AMENDED REPORT

WELL LOCATION AND ACREAGE DEDICATION PLAT

1 API Number		2 Pool Code 71629		3 Pool Name Basin Fruitland Coal		
4 Property Code 19342		5 Property Name CHRISTINA COM 30			6 Well Number IA	
7 OGD No. 12807		8 Operator Name KOCH EXPLORATION			9 Elevation 5926	

10 Surface Location


TL or lot no.	Section	Township	Range	Lot 1/4	Feet from the	North/South line	Feet from the	East/West line	County
D	30	28 N	10 W		290	NORTH	865	WEST	SAN JUAN

11 Bottom Hole Location If Different From Surface

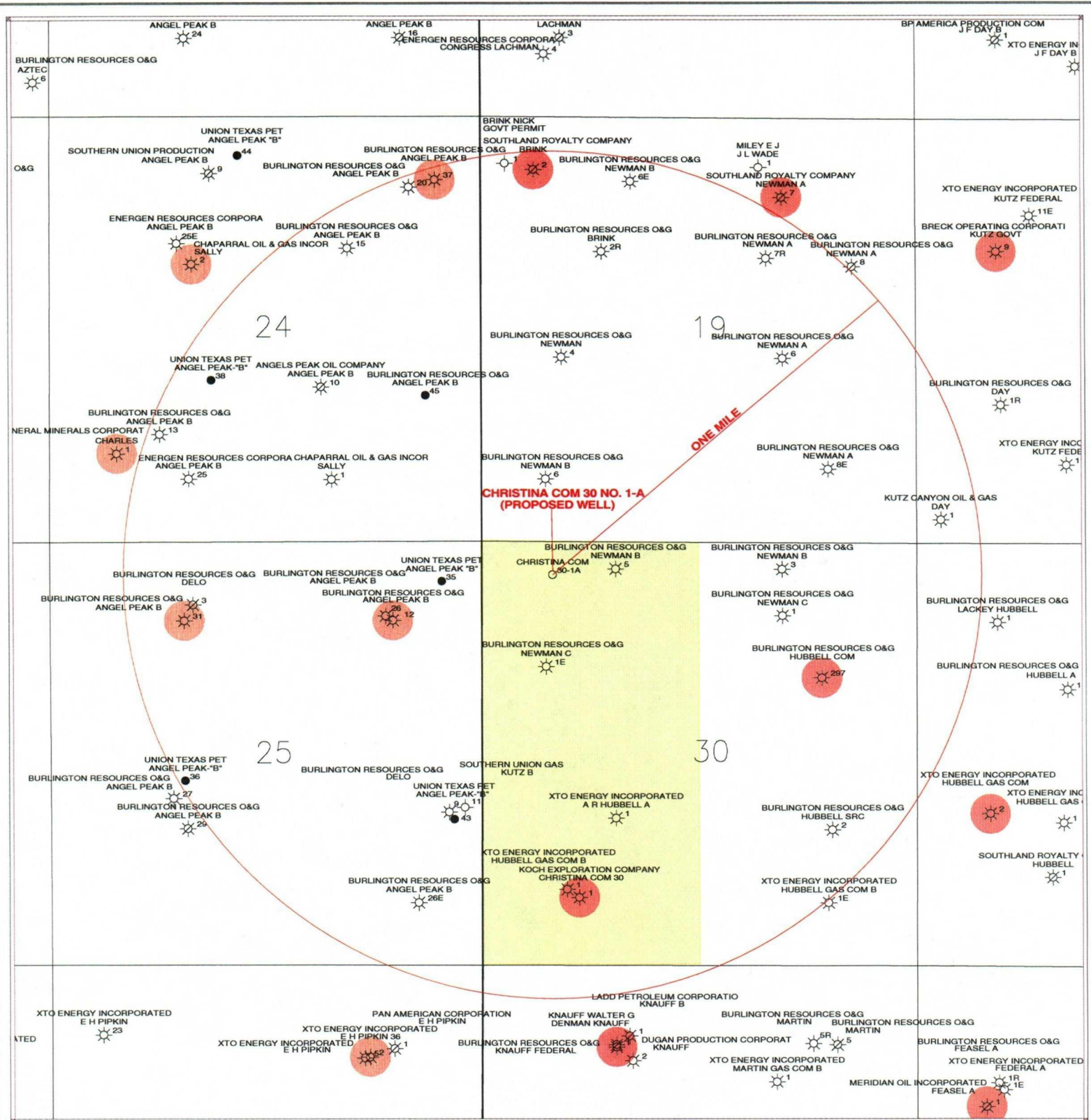
TL or lot no.	Section	Township	Range	Lot 1/4	Feet from the	North/South line	Feet from the	East/West line	County

12 Dedicated Acres 329.40	13 Joint or Infill	14 Consolidation Code	15 Order No.
------------------------------	--------------------	-----------------------	--------------

NO ALLOWABLE WILL BE ASSIGNED TO THIS COMPLETION UNTIL ALL INTERESTS HAVE BEEN CONSOLIDATED
OR A NON-STANDARD UNIT HAS BEEN APPROVED BY THE DIVISION

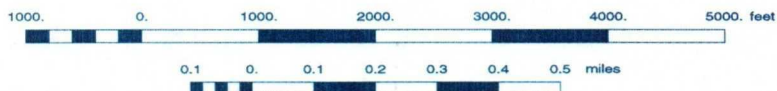
16		S 89°55'E		5353.65'		17 OPERATOR CERTIFICATION	
865'		SF - 065546 B				I hereby certify that the information contained herein is true and complete to the best of my knowledge and belief.	
5290.0'		42.31				Signature 	
SF - 079583		SECTION 30				Printed Name Lance F. Harmon	
42.34						Title Vice President - Land	
SF - 078715						Date 12/11/02	
42.36		Christina Com "30" #1				18 SURVEYOR CERTIFICATION	
		30-045-2821				I hereby certify that the well location shown on this plat was plotted from field notes of actual surveys made by me or under my supervision, and that the same is true and correct to the best of my belief.	
42.39		854' FSL - 1190' #2				10/15/02	
S 89°55' E		w/2 Fruitland Coal Gas Dedication		5359.2'		Date of Survey	
SOUTH				N 0°03' W		Signature and Seal of Professional Surveyor:	





KOCH

Scale 1:20000.



KOCH EXPLORATION COMPANY, LLC

EXHIBIT "B": PROPOSED LOCATION PLAT
CHRISTINA COM 30-1A (SEC 30 T28N R10W)
SAN JUAN COUNTY, NEW MEXICO

Kenny McGee

Scale 1:20000.

2/11/2003

LEGEND

• Production from Fruitland Coal

EXPEDITED ROW

Form 3160-3
(September 2001)

UNITED STATES
DEPARTMENT OF THE INTERIOR
BUREAU OF LAND MANAGEMENT

APPLICATION FOR PERMIT TO DRILL OR REENTER

FORM APPROVED
OMB No. 1004-0136
Expires January 31, 2004

5. Lease Serial No.
SF-078715

6. If Indian, Allottee or Tribe Name
NA

7. If Unit or CA Agreement, Name and No.
NA

8. Lease Name and Well No.
Christina Com 30-1A

9. API Well No.

1a. Type of Work: ☒ DRILL ☐ REENTER

1b. Type of Well: ☐ Oil Well ☒ Gas Well ☐ Other ☒ Single Zone ☐ Multiple Zone

2. Name of Operator Koch Exploration Company, LLC

3a. Address 20 East Greenway Plaza
Houston, Texas 77046

3b. Phone No. (include area code)
713-544-4318

4. Location of Well (Report location clearly and in accordance with any State requirements. *)
At surface NW/4 Sec. 30, T28N, R10W, 290' FNL & 865' FWL
At proposed prod. zone (Same)

10. Field and Pool, or Exploratory
Basin Fruitland Coal

11. Sec., T., R., M., or Blk. and Survey or Area
Sec. 30, T28N, R10W

14. Distance in miles and direction from nearest town or post office*

6 miles Southeast of Bloomfield, NM

12. County or Parish
San Juan

13. State
NM

15. Distance from proposed*
location to nearest
property or lease line, ft.
(Also to nearest drig. unit line, if any) 290'

16. No. of Acres in lease
564.75

17. Spacing Unit dedicated to this well
329.40

18. Distance from proposed location*
to nearest well, drilling, completed,
applied for, on this lease, ft. 4100'

19. Proposed Depth
2050'

20. BLM/BIA Bond No. on file
400 GH. 0471

21. Elevations (Show whether DF, KDB, RT, GL, etc.)
5926' GR

22. Approximate date work will start*
available rig

23. Estimated duration
30 days

24. Attachments

The following, completed in accordance with the requirements of Onshore Oil and Gas Order No.1, shall be attached to this form:

1. Well plat certified by a registered surveyor.
2. A Drilling Plan.
3. A Surface Use Plan (if the location is on National Forest System Lands, the SUPO shall be filed with the appropriate Forest Service Office).

4. Bond to cover the operations unless covered by an existing bond on file (see Item 20 above).
5. Operator certification.
6. Such other site specific information and/or plans as may be required by the authorized officer.

25. Signature Rolf A. Ornelas

Name (Printed/Typed)
Rolf A. Ornelas

Date
Feb 07, '02

Title
SR Engineer

Approved by (Signature)

Name (Printed/Typed)

Date

Title

Office

Application approval does not warrant or certify the the applicant holds legal or equitable title to those rights in the subject lease which would entitle the applicant to conduct operations thereon.

Conditions of approval, if any, are attached.

Title 18 U.S.C. Section 1001 and Title 43 U.S.C. Section 1212, make it a crime for any person knowingly and willfully to make to any department or agency of the United States any false, fictitious or fraudulent statements or representations as to any matter within its jurisdiction.

*(Instructions on reverse)

CHRISTINA COM 30-1A
Sec. 30, T28N, R10W, 290' FNL & 865' FWL
San Juan Co., New Mexico
Lease SF 065546B

Drilling Program

1) Geological name of surface formation -

Estimated tops of important geological markers:

San Jose	Surface
Ojo	888'
Kirtland Shale	923'
Fruitland Coal	1608'
Pict. Cliffs	1913'
TD	2050'

2) Estimated depths at which oil, gas, water, and mineral bearing formation will be found:

Fresh Water	0' to 200'
Salt Water	201' to 1608'
Oil and Gas	1608' to 2050'

3) Pressure Control Equipment:

- a. 10-inch 900 series or 3,000 psi test double gate hydraulic with 4-1/2" pipe rams and 10-inch series 900 hydril above 10-inch series casinghead and cross spool with flanged outlets. See BOP diagram at **Exhibit F-1** for drawing of choke lines, kill lines and choke manifold. Procedures will include waiting on cement 12 hours, nipple up blowout preventer (BOP) assembly and test to 70% of yield of casing or 3,000 psi maximum. The production casinghead pressure rating will be 3,000 psi.
- b. Type of BOP rams: Blind rams and pipe rams are used as shown on the BOP diagram at **Exhibit F-1**. Occasionally, the position of the rams is reversed depending on the drilling contractor's methods.
- c. The choke manifold and header will have 2-inch choke outlets, a 2-inch straight through the line with 2-inch adjustable chokes installed. The inlet line will be a 2-inch line. All of the above are rated at 3,000 psi working pressure (WP). The choke manifold and header system will have manual control valves; no hydraulic valves will be installed. Casing testing procedure – Surface casing will be tested at 750 psi with 1,000 psi maximum after cementing in place and before drilling out of shoe. Intermediate and production casing will be tested to 3,000 psi after cementing in place and after drilling to the required depth.
- d. Hydraulic controls to close the BOPs are located on the rig floor; the hydraulic remote control is located in the bottom doghouse. There will be no manual controls on the BOP.

CHRISTINA COM 30-1A
Sec. 30, T28N, R10W, 290' FNL & 865' FWL
San Juan Co., New Mexico
Lease SF 065546B

e. BOP testing procedures and frequency:

1. Hydril (3,000WP) will be tested to 70% of yield of casing or 3,000 psi maximum.
 2. Double ram BOPs will be tested to 70% of yield of casing or 3,000 psi maximum.
 3. BOPs will be tested upon installation, after casing is run and on each bit trip.
- f. Casinghead connections will be 2-inch; these outlets will usually be bull plugged during drilling operations. No pumping through these connections is allowed except in emergency to keep from wearing out the head.
- g. The drilling spool will be a series 900 3,000 psi WP with a 2-inch kill line and a 2-inch outlet.

4) Proposed Casing Program:

Surface Casing Program:

Surface Casing	8 5/8"	24.0#	J-55 STC	New
Production Casing	4 1/2"	10.5#	J-55 LTC	New

Proposed setting depth, amount and type of cement including additives:

8 5/8" Surface Casing – Surface to 150' – Cement with 100 sks type III (14.6 ppg, slurry yield 1.39 cf/sk) Cement + 2% bwoc Calcium Chloride + .25 lbs/sk Cello Flake + 59.2% Fresh Water. Volume: 138.1 cf., includes 100% excess.

4 1/2" Production Casing – Surface to 2050' –

Lead with 248 sks Premium Lite FM (12.1 ppg, slurry Yield 2.15 cf/sk) + 3% bwoc Calcium Chloride + .25 lb/sk Cello Flake + .4% bwoc FL-52 + 8% bwoc Bentonite + .4% bwoc Sodium Metasilicate + 3 lb/sk Pheno Seal + 116.1 % Fresh Water. Volume: 532.6 cf., includes 50% excess.

Tail with 110 sks Type III Cement (14.0 ppg, slurry Yield 1.54 cf/sk) + 2% bwoc Calcium Chloride + .25 lb/sk Cello Flake + .2% bwoc FL-52 + 68.9% Fresh Water. Volume: 157.4 cf., includes 50% excess

5) Mud Program:

0' – 150' – Spud mud and water treated with gel lime.

150' – 2050' – Lime mud, water and polymer.

CHRISTINA COM 30-1A
Sec. 30, T28N, R10W, 290' FNL & 865' FWL
San Juan Co., New Mexico
Lease SF 065546B

6) Testing, Logging, and Coring Program:

No drill stem tests or cores will be taken.

Logging: Open hole – Triple Combo, 2,050' to surface or cased hole log as below.
Production Casing – First Run – Gamma Ray – Casing Collar Locator –
Cement Bond Log. (If cement circulates to surface, no CBL will be run.)
Second Run – Gamma Ray – Gas Spectrum Log; or Gamma Ray-DIL,
Density Neutron Porosity Caliper, if open hole log was not ran.

7) Expected Pressures –

Fruitland Fm. Underpressured
Bottom Hole Underpressured and low frac gradient
No abnormal pressures, temperature or poisonous gas anticipated.

**8) Drilling Tools: 20 4-3/4" Drill Collars with 3-1/2" IF Connections
3-1/2" Drill Pipe with 3-1/2" IF Connections**

Anticipated Spud Date: July 1, 2003
Anticipated Completion Date: July 31, 2003

Christina Com 30 #1A
Sec. 30, T28N, R10W, 290' FNL & 865' FWL
San Juan Co., New Mexico
Lease NM SF 065546B

Surface Use Program

1) Existing Roads and Well Location (Exhibit A)

- a. The proposed Fruitland Coal well site is located at 290' FNL & 865' FWL of Sec. 30, T28N, R10W, San Juan County, New Mexico. All existing roads used to access the proposed location shall continue to be maintained in the same or better condition than presently maintained.
- b. Directions to the location are as follows; From Bloomfield, go South on Highway 550 across river, turn East on CR 4980 (WFS Kutz Plant Road), turn left just before reaching the WFS Kutz Plant, continue on road around the plant where road is heading Southeast direction for approximately 3 miles, turn right and travel 1 mile to location on left.

2) Planned Access Road

- a. Approximately 138' of new access road will be constructed.
- b. Turnouts as specified by Bureau of Land Management (BLM).
- c. Any culverts deemed necessary by dirt contractor during construction will be brought to the attention of the BLM Lead and placed accordingly.
- d. No gates, cattleguards, or fences will be needed.

3) Topographic Map and Well Location

- a. A 7.5 ' quadrangle topographic map was filed with the Notice of Staking. The proposed project is located on the Bloomfield quadrangle topographic map in T28N, R10W, NW/4 NW/4 (D), Section 30, 290' FNL & 865' FWL. The proposed project area is located on a southwest-facing mesa slope east of Mockingbird Hill. Largo Canyon is located 1.7 mile to the southwest. Vegetation consists of occasional juniper trees, snakeweed, sagebrush, Mormon tea, greasewood, Russian thistle, prickly pear cactus and various grasses including galleta, Indian rice grass, and black grama. Sediments are brown to light brown silty clay loam. Existing disturbances include numerous well pads, access roads, and pipeline corridors.
- b. Approximately thirty-seven (37) existing natural gas wells are located within a 1.0-mile radius of the proposed project (Exhibit B). Pipelines and access roads associated with these facilities represent further disturbance within the area.

4) Wellsite Layout and Cross Sections

See Cut & Fill plat for details. The proposed project will require 3:1 cut and fill slopes. Drainage will be diverted along the East Side of the well pad to run South. Will round SE corner #6 and keep all fill from going over hill on East side of location.

Christina Com 30 #1A
Sec. 30, T28N, R10W, 290' FNL & 865' FWL
San Juan Co., New Mexico
Lease NM SF 065546B

5) Water Supply

- a. Fresh water will be obtained from commercial sources and trucked to location by directions listed in Paragraph 1(b). or
- b. Produced water from existing Koch operated coal wells located in Sec, 25, 26, 27 of T32N, R9W and Sec 31 of T32N, 8W (Lease #NM-013642) could be used for drilling and completion.

6) Source of Construction Materials

Construction materials will be obtained from the location site.

7) Methods of Handling Waste Disposal:

- a. The drilling fluids, cuttings, and completion fluids will be placed in the reserve pit. An 8-mil plastic liner will be installed in reserve pit. The reserve pit will be fenced on three sides away from the pad during drilling and the fourth side fenced as soon as the rig moves out. Upon completion of drilling, the reserve pit will be allowed to evaporate or will be hauled away by truck to an approved disposal facility, prior to filling reserve pit. The reserve pit will be backfilled, leveled and contoured so as to prevent any materials being carried into the watershed. Upon completion, the pad will be leveled, contoured, and reseeded with the appropriate seed mixture as specified by the BLM. The BLM seed mix for this project is the "New BLM Special Seed Mixture".
- b. All garbage and trash will be hauled away to approved landfill facility.
- c. Chemical toilets will be provided and maintained during drilling operations.

8) Ancillary Facilities

No ancillary facilities are planned for this project; however, the potential does exist for the placement of a compressor unit on location during some stage in the life of the well. If a compressor unit is placed on location, it will abide by any noise restrictions in affect at the time.

9) Production Facility Layout

- a. See attachment **Exhibit C** to this plan. Production equipment will be painted the color designated by the BLM. Color: Federal Green.
- b. Location of Proposed New Facilities – A 4-1/2" OD buried steel pipeline that is approximately 138' feet in length will be constructed along the existing roadway. The pipe-wall thickness is .156 and the pipe-wall strength is 42,000# yield. It will tie the well into a line operated by Williams Field Services. The pipeline has the potential to be used to transport gas to drill the well. After the well is spudded, the pipeline will be authorized by a right-of-way issued to Williams Field Services. Please refer to the attached proposed pipeline plat see **Exhibit D** for additional information

Christina Com 30 #1A
Sec. 30, T28N, R10W, 290' FNL & 865' FWL
San Juan Co., New Mexico
Lease NM SF 065546B

10) Plans for Restoration of Surface

Topsoil (6") will be stockpiled in the construction zone for later use in restoration. Cut and fill will be sloped at no greater than a 3:1 slope. If the well is productive, areas not used in production will be contoured and seeded with the New BLM Special Seed Mixture. When the well is abandoned, the location and access road will be cleaned and restored to the original topographical contours as much as possible. The area will be re-seeded with the appropriate seed mixture.

11) Surface Ownership

The surface ownership is the BLM. The BLM/Farmington Field Office has surface and mineral jurisdiction on this project.

12) Other Information

The onsite for the proposed project was conducted on Nov. 6, 2002 by Bill Liess, as BLM lead.

Biosphere Environmental Sciences and Technologies, LLC (B.E.S.T.) conducted a Threatened and Endangered Species Survey of this well pad in November 2002. B.E.S.T. personnel made this report available to the BLM office.

San Juan County Museum Association, DCA in Bloomfield, New Mexico has submitted the Cultural Resources Survey Report to the BLM under DCA Technical Report No. 02-DCA-136

The construction contractor for the proposed project is Adobe Contractors.

There are no recreational areas, Special Management Areas (SMAs), Areas of Critical Environmental Concern (ACECs) or wilderness areas within the project area.

The proposed action would impact no floodplains or stock ponds.

Christina Com 30 #1A
Sec. 30, T28N, R10W, 290' FNL & 865' FWL
San Juan Co., New Mexico
Lease NM SF 065546B

13) Operator's Representative and Certification

Representatives:

Don Johnson
Koch Exploration Company
P.O. Box 489
Aztec, New Mexico 87410
Phone: 505-334-9111

Rolf A. Ornelas
Koch Exploration Company
20 East Greenway Plaza
Houston, Texas 77046
713-544-4318

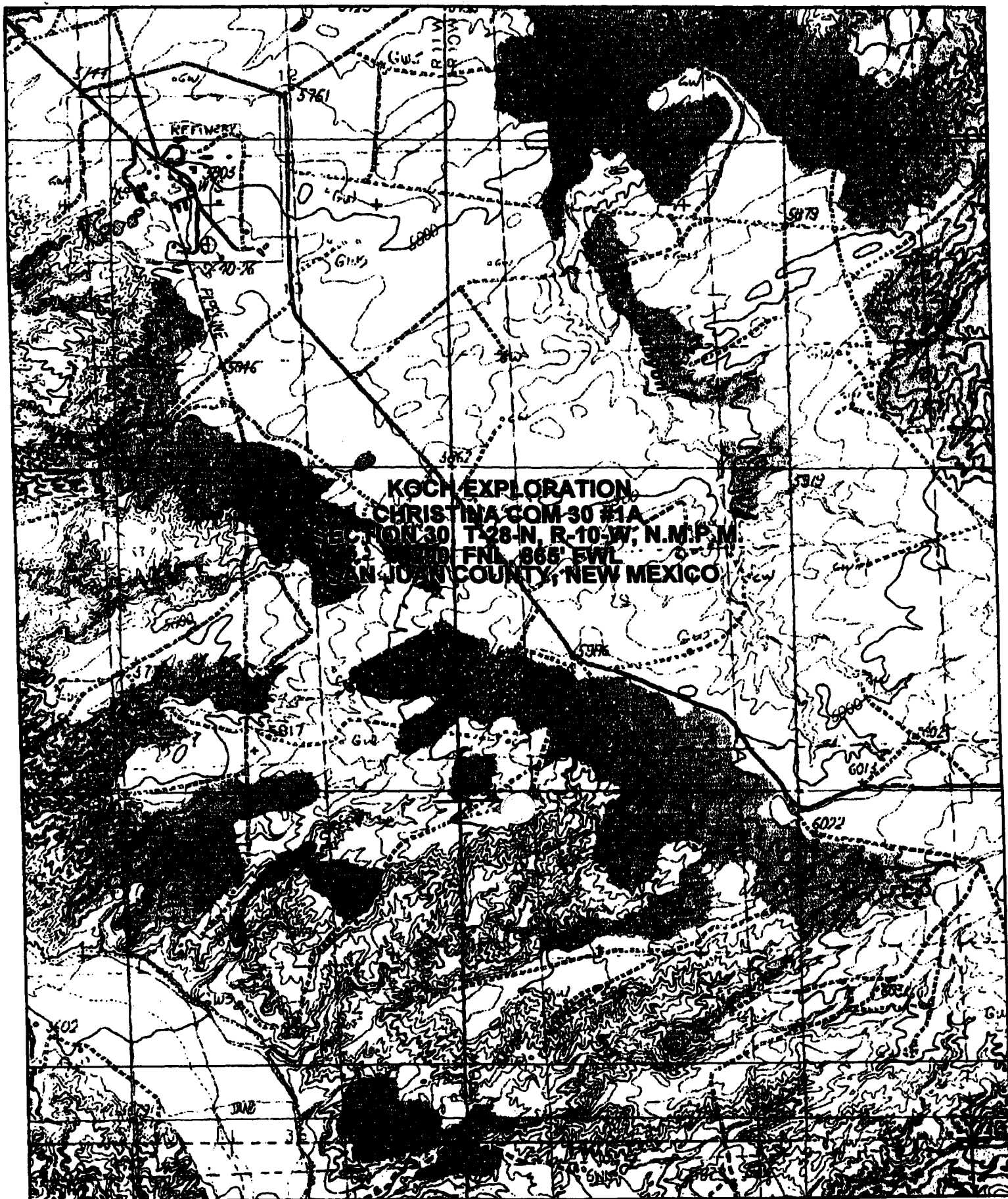
I hereby certify that I, or persons, under my direct supervision, have inspected the proposed drill site and access route; that I am familiar with the conditions which currently exist; that the statements made in this plan are, to the best of my knowledge, true and correct; and that the work associated with operations proposes herein will be performed by Koch Exploration Company and its contractors and subcontractors in conformity with this plan and the terms and conditions under which it is approved. This statement is subject to the provisions in 18 U.S.C. 1001 for the filing of a false statement.

2-07-03

Date

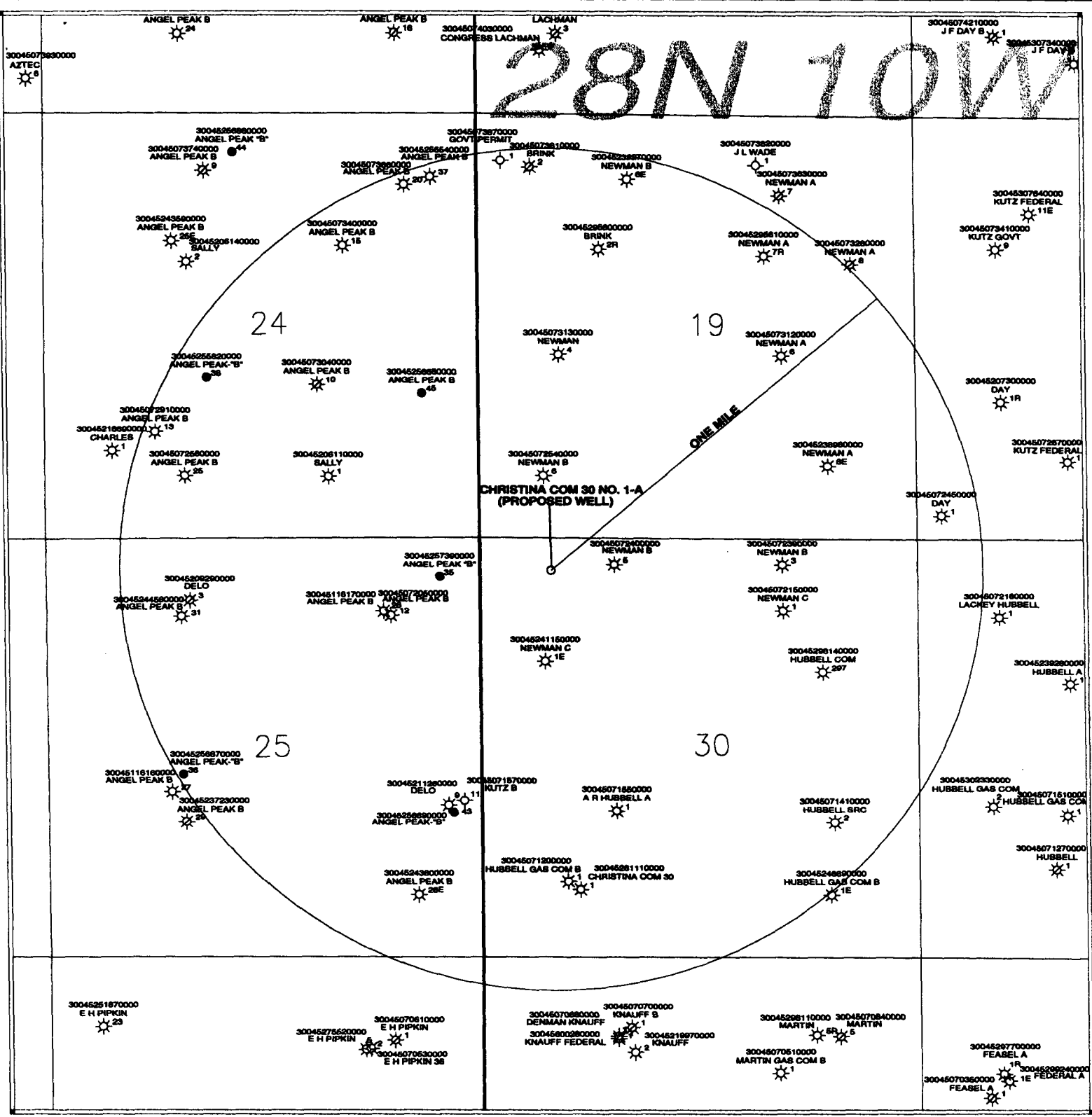
Rolf A. Ornelas

Rolf A. Ornelas
Senior Engineer



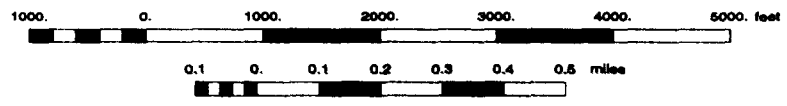
KGCH EXPLORATION
CHRISTINA COM-30 #1A
SECTION 30 T-28-N, R-10-W, N.M.P.M.
8660 FNL, 866' FWL
SAN JUAN COUNTY, NEW MEXICO

Exhibit A



KOCH

Scale 1:20000.



KOCH EXPLORATION COMPANY, LLC		
EXHIBIT "B": PROPOSED LOCATION PLAT CHRISTINA COM 30-1A (SEC 30 T28N R10W) SAN JUAN COUNTY, NEW MEXICO		
Kenny McGee		1/10/2003
Scale 1:20000.		

DISTRICT I
P.O. Box 1080, Hobbs, N.M. 88241-1080

DISTRICT II
811 South First, Artesia, N.M. 88210

DISTRICT III
1000 Rio Branson Rd., Aztec, N.M. 87410

DISTRICT IV
2040 South Pacheco, Santa Fe, NM 87504-2088

State of New Mexico
Energy, Minerals & Natural Resources Department

OIL CONSERVATION DIVISION

P.O. Box 2088
Santa Fe, NM 87504-2088

Form C-102

Revised February 21, 1994

Instructions on back

Submit to Appropriate District Office

State Lease - 4 Copies

Fee Lease - 3 Copies

☐ AMENDED REPORT

WELL LOCATION AND ACREAGE DEDICATION PLAT

¹ API Number	² Pool Code 71629	³ Pool Name Basin Fruitland Coal
⁴ Property Code 19342	⁵ Property Name CHRISTINA COM 30	⁶ Well Number IA
⁷ OGHD No. 12807	⁸ Operator Name KOCH EXPLORATION	⁹ Elevation 5926

¹⁰ Surface Location

UL or lot no.	Section	Township	Range	Lot 1/4	Feet from the	North/South line	Feet from the	East/West line	County
D	30	28 N	10 W		290	NORTH	865	WEST	SAN JUAN

¹¹ Bottom Hole Location If Different From Surface

UL or lot no.	Section	Township	Range	Lot 1/4	Feet from the	North/South line	Feet from the	East/West line	County

¹² Dedicated Acres	¹³ Joint or Infill	¹⁴ Consolidation Code	¹⁵ Order No.

NO ALLOWABLE WILL BE ASSIGNED TO THIS COMPLETION UNTIL ALL INTERESTS HAVE BEEN CONSOLIDATED
OR A NON-STANDARD UNIT HAS BEEN APPROVED BY THE DIVISION

<p>SF-065546-B</p> <p>SF-079583</p> <p>SF-078715</p> <p>Existing Well Christina Com 30 #1 854' FSL & 1190' FWL API #30-045-28111</p>	<p>¹⁷ OPERATOR CERTIFICATION</p> <p>I hereby certify that the information contained herein is true and complete to the best of my knowledge and belief.</p> <p>Signature: </p> <p>Printed Name: Lance F. Harmon</p> <p>Title: Vice President - Land</p> <p>Date: 12/11/02</p>	
	<p>¹⁸ SURVEYOR CERTIFICATION</p> <p>I hereby certify that the well location shown on this plat was plotted from field notes of actual surveys made by me or under my supervision, and that the same is true and correct to the best of my belief.</p> <p>Date of Survey: 10/15/02</p> <p>Signature and Seal of Professional Surveyor: </p>	

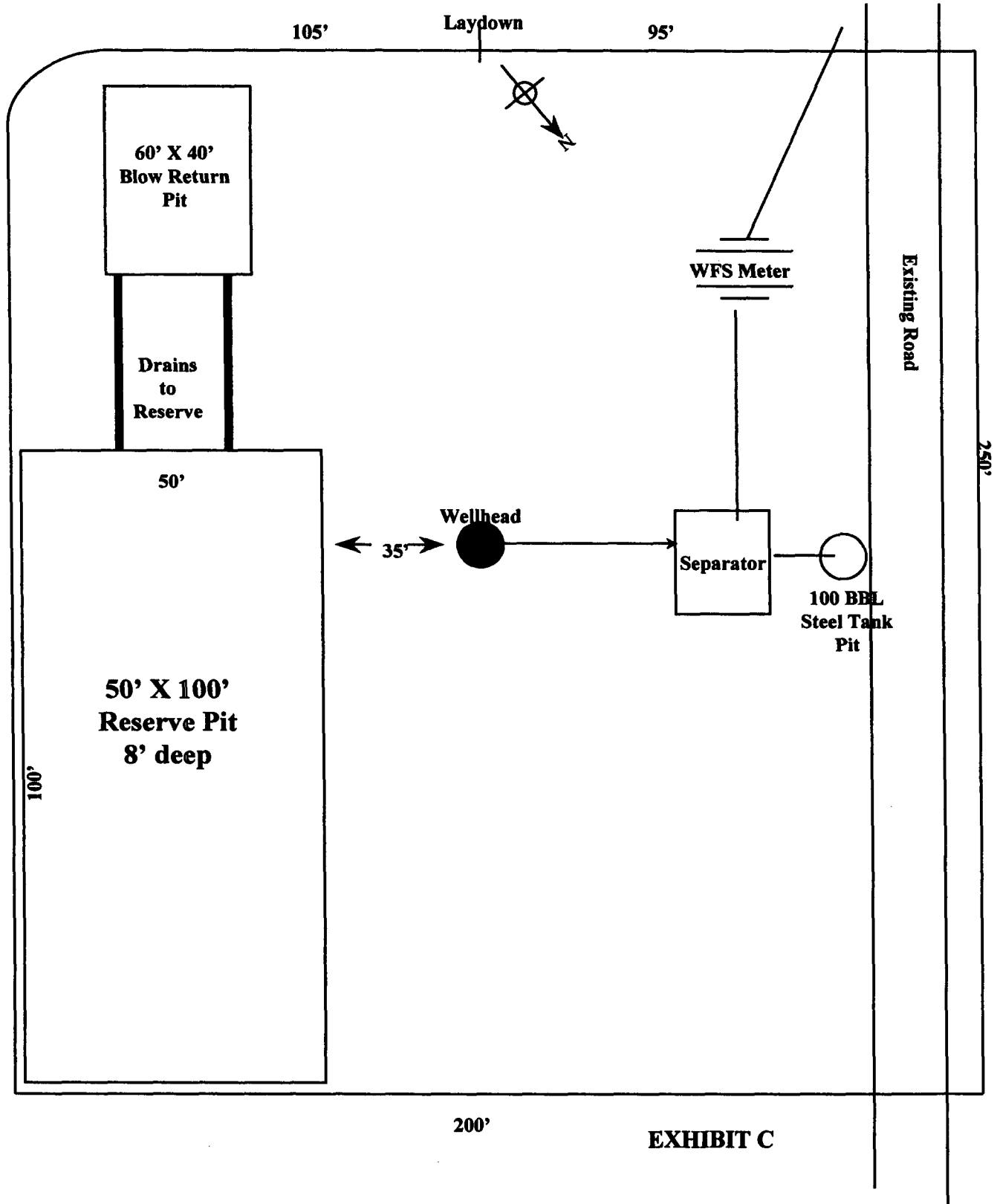


B-B'

C-C'

**P.O. BOX 3651
FARMINGTON, NM 87499
OFFICE: (505) 334-0408**

KOCH EXPLORATION COMPANY LLC
Christina Com 30 1A
Sec 30, T28N, R10W
290' FNL & 865' FWL - ELEVATION 5926'





P.O. Drawer 3337, 700 S. Tucker, Farmington, New Mexico 87400
(505) 327-4961 24-Hour Dispatch (800) 835-6666

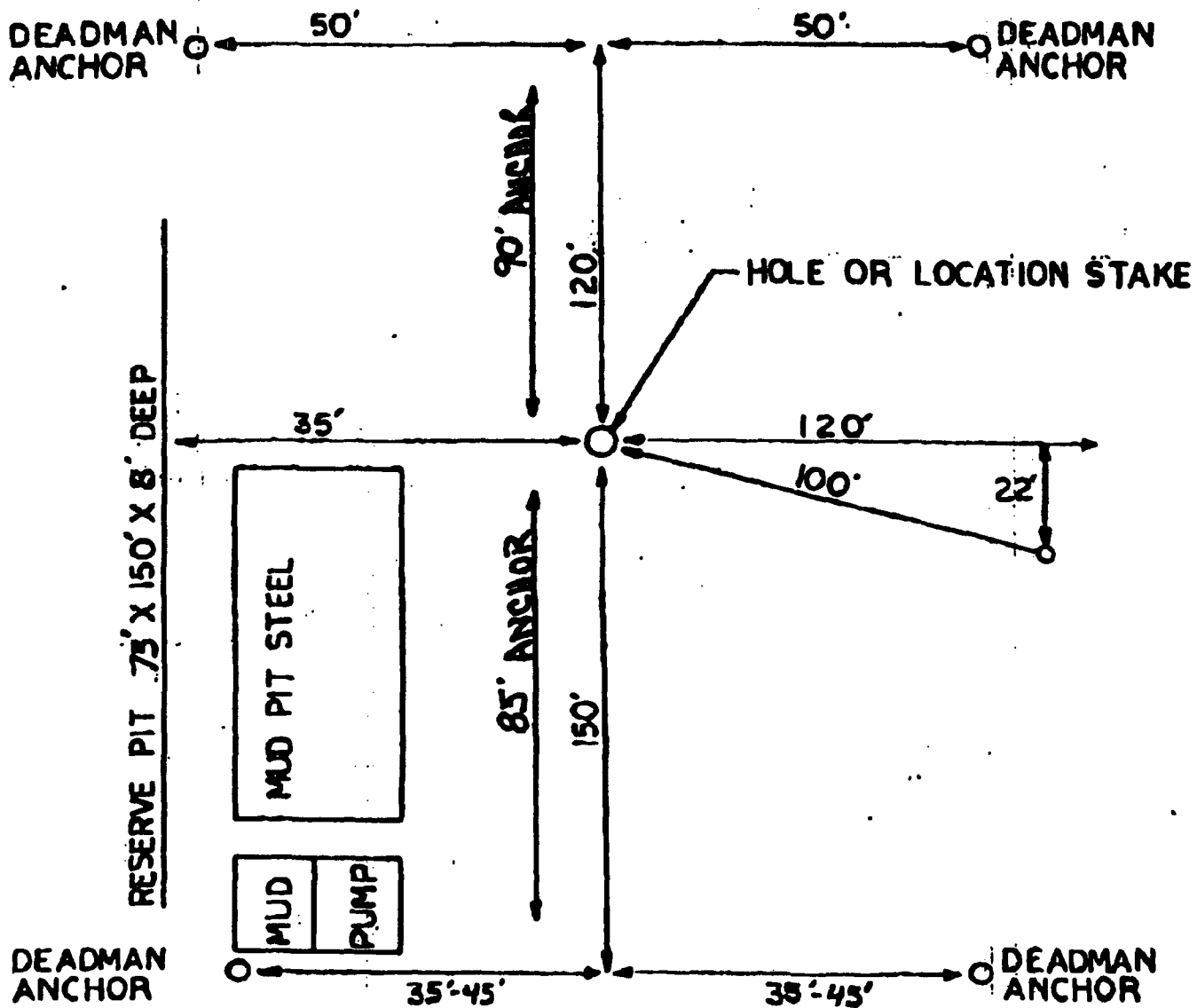
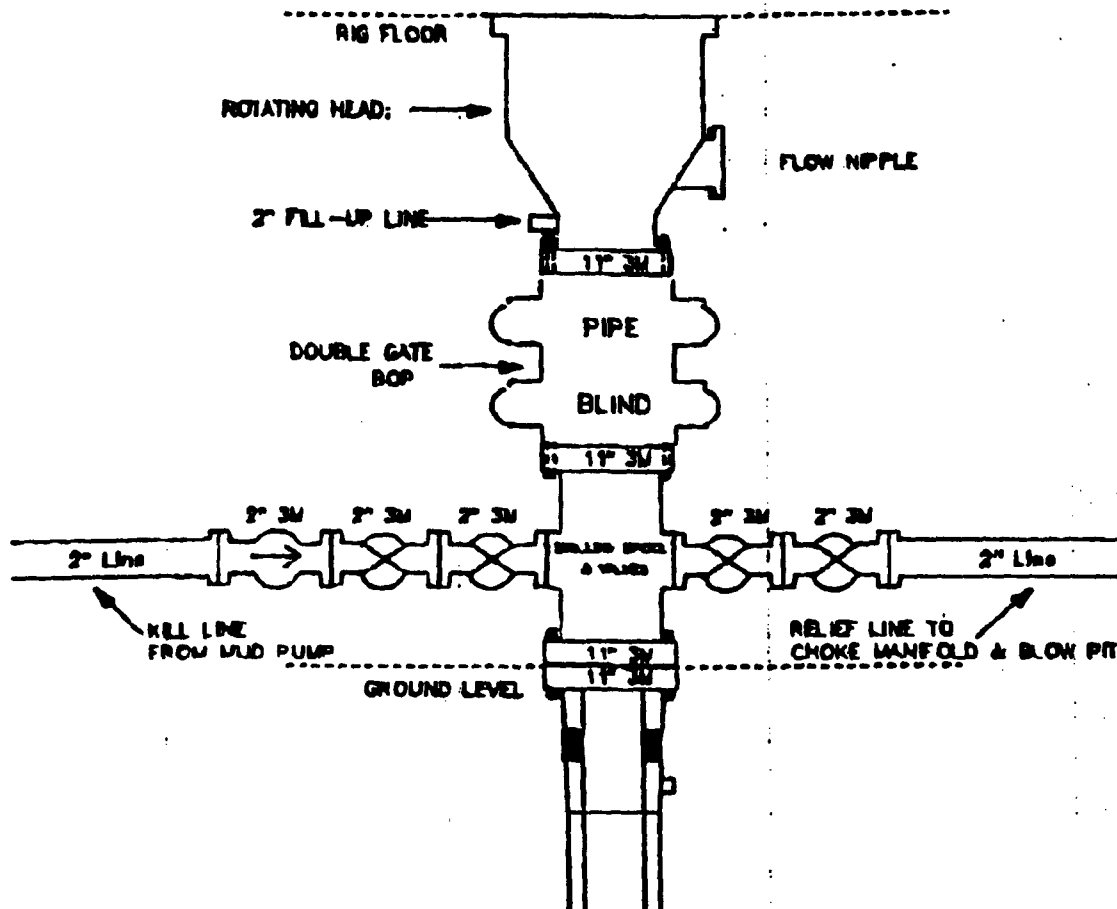


Exhibit "D"

Key **FOUR CORNERS**
P. O. BOX 1067
6661 U.S. HWY. 84
FARMINGTON, NEW MEXICO 87406
•
TELEPHONE: (505) 326-3371
FAX: (505) 326-3370

Drilling Rig 3000 psi System



11" Bore (10" Nominal), 3000psi working pressure minimum double gate BOP to be equipped with blind and pipe rams. A rotating head on the top of the rams. All BOP equipment is 3000psi working pressure.

Note: A floor safety valve and upper kelly cock with handle will be available.

Exhibit "F-1"

