

1R - 1/20

Annual GW Mon. REPORTS

DATE:

2008



2008
**ANNUAL MONITORING REPORT
AND GROUNDWATER CLOSURE REQUEST**

RECEIVED

2009 MAR 18 PM 1 25

MONUMENT 11
SE ¼ NE¼ Section 30, Township 19 South, Range 37 East
LEA COUNTY, NEW MEXICO
PLAINS SRS NUMBER: TNM MONUMENT-11
NMOCD Reference Number 1R-120

Prepared For:

PLAINS MARKETING, L.P.
333 CLAY STREET, SUITE 1600
HOUSTON, TEXAS 77002



Prepared By:

NOVA Safety and Environmental
2057 Commerce Street
Midland, Texas 79703

February 2009

Ronald K. Rounsaville
Project Manager

Brittan K. Byerly, P.G.
President

TABLE OF CONTENTS

INTRODUCTION.....	1
SITE DESCRIPTION AND BACKGROUND INFORMATION.....	1
FIELD ACTIVITIES.....	1
LABORATORY RESULTS.....	2
SUMMARY.....	4
ANTICIPATED ACTIONS.....	4
LIMITATIONS.....	4
DISTRIBUTION.....	5

FIGURES

Figure 1 – Site Location Map

Figure 2A – Inferred Groundwater Gradient Map – February 26, 2008

2B – Inferred Groundwater Gradient Map – May 26, 2008

2C – Inferred Groundwater Gradient Map – August 28, 2008

2D – Inferred Groundwater Gradient Map – November 21, 2008

Figure 3A – Groundwater Concentration and Inferred PSH Extent Map – February 26, 2008

3B – Groundwater Concentration and Inferred PSH Extent Map – May 26, 2008

3C – Groundwater Concentration and Inferred PSH Extent Map – August 28, 2008

3D – Groundwater Concentrations and Inferred PSH Extent Map – November 21, 2008

TABLES

Table 1 – 2008 Groundwater Elevation Data

Table 2 – 2008 Concentrations of BTEX and TPH in Groundwater

Table 2 – 2008 Concentrations of PAH in Groundwater

APPENDICES

Appendix A – Release Notification and Corrective Action (Form C-141)

ENCLOSED ON DATA DISK

2008 Annual Monitoring Report

2008 Tables 1, 2 and 3 – Groundwater Elevation, BTEX, TPH and PAH Concentration Data

2008 Figures 1, 2A-2D, and 3A-3D

Electronic Copies of Laboratory Reports

Historic Table 1 and 2 – Groundwater Elevation and BTEX, TPH, PAH Concentration Tables

Historic Table 1 and 2 – Groundwater Elevation and BTEX, TPH, PAH Concentration Tables

INTRODUCTION

On behalf of Plains Marketing, L.P., (Plains), NOVA Safety and Environmental (NOVA) is pleased to submit this Annual Monitoring Report in compliance with the New Mexico Oil Conservation Division (NMOCD) letter of May 1998, requiring submittal of an Annual Monitoring Report by April 1st of each year. Beginning on May 29, 2004, project management responsibilities for the Monument 11 Site (the site) were assumed by NOVA. The site was formerly the responsibility of Enron Oil Trading and Transportation (EOTT), and is now the responsibility of Plains. This report is intended to be viewed as a complete document with text, figures, tables and appendices. This report presents the results of the quarterly groundwater monitoring events conducted in calendar year 2008 only. However, historic data tables as well as 2008 laboratory analytical reports are presented on the enclosed disk. For reference, the Site Location Map is provided as Figure 1.

Groundwater monitoring was conducted each quarter of 2008 to assess the levels and extent of dissolved phase constituents and Phase Separated Hydrocarbon (PSH). The groundwater monitoring events consisted of measuring static water levels in the monitor wells, checking for the presence of PSH and purging and sampling of each well exhibiting sufficient recharge. Monitor wells containing a thickness of PSH greater than 0.01 foot were sampled as per a NMOCD directive.

As of the end of 2008, Plains had a minimum of fourteen consecutive quarters of groundwater monitoring data below NMOCD guidelines at the Monument 11 Site. Therefore, Plains is requesting approval for termination of the groundwater monitoring portion of the remediation activities at this site including plugging and abandoning of the six monitor wells.

SITE DESCRIPTION AND BACKGROUND INFORMATION

The legal description of the site is SE ¼ NE¼ Section 30, Township 19 South, Range 37 East. No information with respect to the release date, volume of crude oil released and recovered, excavation dimensions or pipeline repair is available as this release occurred while the pipeline was operated by Texas New Mexico Pipeline Company (TNM). The Release Notification and Corrective Action Form (C-141) is provided as Appendix A. The initial site investigation, which consisted of the installation of four groundwater monitor wells (MW-1 through MW-4), was conducted by previous consultants.

Six groundwater monitor wells (MW-1 through MW-6) are currently on-site. No measurable PSH thickness appears on any of the monitor wells.

FIELD ACTIVITIES

Product Recovery Efforts

During the 2008 reporting period, there was no measurable PSH (greater than the 0.01 feet) detected in any monitor well. Approximately 14 gallons (0.36 barrels) of product have been recovered since the project inception.

Groundwater Monitoring

Quarterly monitoring events for the reporting period were performed according to the following sampling schedule, which was approved by the NMOCD in correspondence dated April 28, 2004 and amended in NMOCD correspondence dated June 22, 2005:

NMOCD Approved Sampling Schedule	
MW-1	Quarterly
MW-2	Annually
MW-3	Annually
MW-4	Quarterly
MW-5	Quarterly
MW-6	Quarterly

The site monitor wells were gauged and sampled on February 26, May 26, August 28 and November 21, 2008. During each sampling event, monitor wells not containing PSH were purged a minimum of three (3) well volumes of water or until the wells failed to produce water using a PVC bailer or electric Grundfos pump. Groundwater was allowed to recharge and samples were collected using disposable Teflon samplers. Water samples were placed in clean, glass containers provided by the laboratory and placed on ice in the field. Purge water was contained in a polystyrene tank and disposed of at a licensed disposal facility.

Locations of the monitor wells and the inferred groundwater gradient, which were constructed from measurements collected during the four quarterly monitoring events, are depicted on Figures 2A through 2D, the Inferred Groundwater Gradient Maps. Groundwater elevation data for 2008 is provided as Table 1. Historic groundwater elevation data beginning at a project inception is provided on the enclosed data disk.

The most recent Groundwater Gradient Map, Figure 2D, indicates a general gradient of approximately 0.012 feet/foot to the southeast as measured between groundwater monitor wells MW-5 and MW-1. This is consistent with data presented on Figures 2A through 2C from earlier in the year. The corrected groundwater elevation has ranged between 3598.68 and 3601.33 feet above mean sea level, in monitor wells MW-1 and MW-5 on November 11, 2008, respectively.

LABORATORY RESULTS

Groundwater samples obtained during the quarterly sampling events of 2008 were delivered to Trace Analysis, Inc. in Midland, Texas for determination of Benzene, Toluene, Ethylbenzene and Xylene (BTEX) constituent concentrations by EPA Method 8021B, and Polynuclear Aromatic Hydrocarbons (PAH) concentrations by EPA Method 8270C. A listing of BTEX constituent concentrations for 2008 are summarized in Table 2 and the PAH constituent concentrations for 2008 are summarized in Table 3. Copies of the laboratory reports generated for 2008 are provided on the enclosed data disk. The quarterly groundwater sample results for BTEX constituent concentrations are depicted on Figures 3A through 3D.

Monitor well MW-1 is sampled on a quarterly schedule and analytical results indicate BTEX constituent concentrations were below laboratory method detection limits (MDL) and the NMOCD regulatory standard of 0.01 mg/L for benzene, 0.75 mg/L for toluene, 0.75 mg/L for

ethylbenzene and 0.62 mg/L for xylene, for each BTEX constituent during the 4th quarter sampling event. Monitor well MW-1 has exhibited fourteen consecutive monitoring events below NMOCD regulatory limits. PAH analysis during the 4th quarter sampling event indicated no elevated concentrations were detected above the respective MDLs.

Monitor well MW-2 is sampled on an annual schedule and analytical results indicate BTEX constituent concentrations were below the laboratory method detection limits (MDL) and NMOCD regulatory standard for each BTEX constituent during the 4th quarter sampling event. The analytical results indicate BTEX constituent concentrations have been below NMOCD regulatory standards for the last twenty-two consecutive quarters. PAH analysis during the 4th quarter sampling event indicated no elevated concentrations were detected above the respective MDLs.

Monitor well MW-3 is sampled on an annual schedule. Analytical results indicate BTEX constituent concentrations were below MDL and NMOCD standards during the 4th quarter of the reporting period, with the exception of the xylenes constituent, which indicated a concentration of 0.0034 mg/L (below NMOCD regulatory standard). Monitor well MW-3 has exhibited twenty-two consecutive monitoring events below NMOCD regulatory limits. PAH analysis during the 4th quarter sampling event indicated no elevated concentrations were detected above the respective MDLs with the exception of dibenzofuran (0.000903 mg/L), which is below the WQCC Drinking Water Standards.

Monitor well MW-4 is sampled on a quarterly schedule. Analytical results indicate benzene concentrations ranged from <0.001 mg/L during the 4th quarter to 0.0052 mg/L during the 3rd quarter of 2008. Benzene concentrations were below the NMOCD regulatory standard during all four quarters of the reporting period. Toluene concentrations ranged from <0.001 mg/L during the 4th quarter to 0.0019 mg/L during the 1st quarter of 2008. Toluene concentrations were below the NMOCD standards during all four quarters of the reporting period. Ethylbenzene concentrations ranged from <0.001 mg/L during the 4th quarter to 0.0027 mg/L during the 1st quarter of 2008. Ethylbenzene concentrations were below the NMOCD regulatory standards during all four quarters of the reporting period. Monitor well MW-4 has exhibited fifteen consecutive monitoring events below regulatory limits. PAH analysis during the 4th quarter sampling event indicated a detectable concentration above MDLs for fluorene (0.00234 mg/L), naphthalene (0.00122 mg/L), phenanthrene (0.00156 mg/L), 1-methylnaphthalene (0.00913 mg/L), 2-methylnaphthalene (0.000472 mg/L) and dibenzofuran (0.00208 mg/L), which are below the WQCC Drinking Water Standards.

Monitor well MW-5 is sampled on a quarterly schedule. Analytical results indicate that BTEX constituent concentrations were below MDL and NMOCD standards during the four quarters of the reporting period. Monitor well MW-5 has exhibited seventeen consecutive monitoring events below NMOCD regulatory limits. PAH analysis during the 4th quarter sampling event indicated no elevated concentrations were detected above the respective MDLs.

Monitor well MW-6 is sampled on a quarterly schedule. Analytical results indicate that BTEX constituent concentrations were below MDL and NMOCD standards during all four quarters of the reporting period. Monitor well MW-6 has exhibited seventeen consecutive monitoring events below NMOCD regulatory limits. PAH analysis during the 4th quarter sampling event indicated no elevated concentrations were detected above the respective MDLs.

Laboratory analytical results were compared to NMOCD regulatory limits based on the New Mexico groundwater standards found in section 20.6.2.3103 of the New Mexico Administrative Code.

SUMMARY

This report presents the results of monitoring activities for the 2008 annual monitoring period. As discussed above, none of the site monitor wells exhibited measurable PSH or hydrocarbon sheen during the 2008 reporting period. Currently, there are six groundwater monitor wells (MW-1 through MW-6) on-site. The most recent Groundwater Gradient map, Figure 2D, indicates a general gradient of approximately 0.012 feet/foot to the southeast.

Review of laboratory analytical results of the groundwater samples obtained during the 2008 monitoring period indicate the benzene and total BTEX constituent concentrations were below the applicable NMOCD standard in all monitor wells during the reporting period. BTEX concentrations have been below NMOCD regulatory standards for a minimum of fourteen consecutive quarters.

ANTICIPATED ACTIONS

As of the end of 2008, Plains had a minimum of fourteen consecutive quarters of groundwater monitoring data below NMOCD guidelines. Therefore, Plains is formally requesting closure of the groundwater remediation and monitoring activities at this site, and approval to plug and abandon the six monitor wells.

A Soil Closure Proposal will be submitted to the NMOCD in the future. The Proposal will report the results of the Soil Investigation Work Plan and propose a strategy for closure of the remaining soil issues at the site.

LIMITATIONS

NOVA has prepared this Annual Monitoring Report to the best of its ability. No other warranty, expressed or implied, is made or intended.

NOVA has examined and relied upon documents referenced in the report and has relied on oral statements made by certain individuals. NOVA has not conducted an independent examination of the facts contained in referenced materials and statements. We have presumed the genuineness of the documents and that the information provided in documents or statements is true and accurate. NOVA has prepared this report, in a professional manner, using the degree of skill and care exercised by similar environmental consultants. NOVA also notes that the facts and conditions referenced in this report may change over time and the conclusions and recommendations set forth herein are applicable only to the facts and conditions as described at the time of this report.

This report has been prepared for the benefit of Plains. The information contained in this report, including all exhibits and attachments, may not be used by any other party without the express consent of NOVA and/or Plains.

DISTRIBUTION

- Copy 1: Ed Hansen
New Mexico Energy, Minerals and Natural Resources Department
Oil Conservation Division
1220 South St. Francis Drive
Santa Fe, NM 87505
- Copy 2: Larry Johnson
New Mexico Energy, Minerals and Natural Resources Department
Oil Conservation Division, District 1
1625 French Drive
Hobbs, NM 88240
- Copy 3: Jason Henry
Plains Marketing, L.P.
2530 State Highway 214
Denver City, TX 79323
jhenry@paalp.com
- Copy 4: Jeff Dann
Plains Marketing, L.P.
333 Clay Street
Suite 1600
Houston, TX 77002
jpdann@paalp.com
- Copy 5: NOVA Safety and Environmental
2057 Commerce Street
Midland, TX 79703
rrounsaville@novatraining.cc

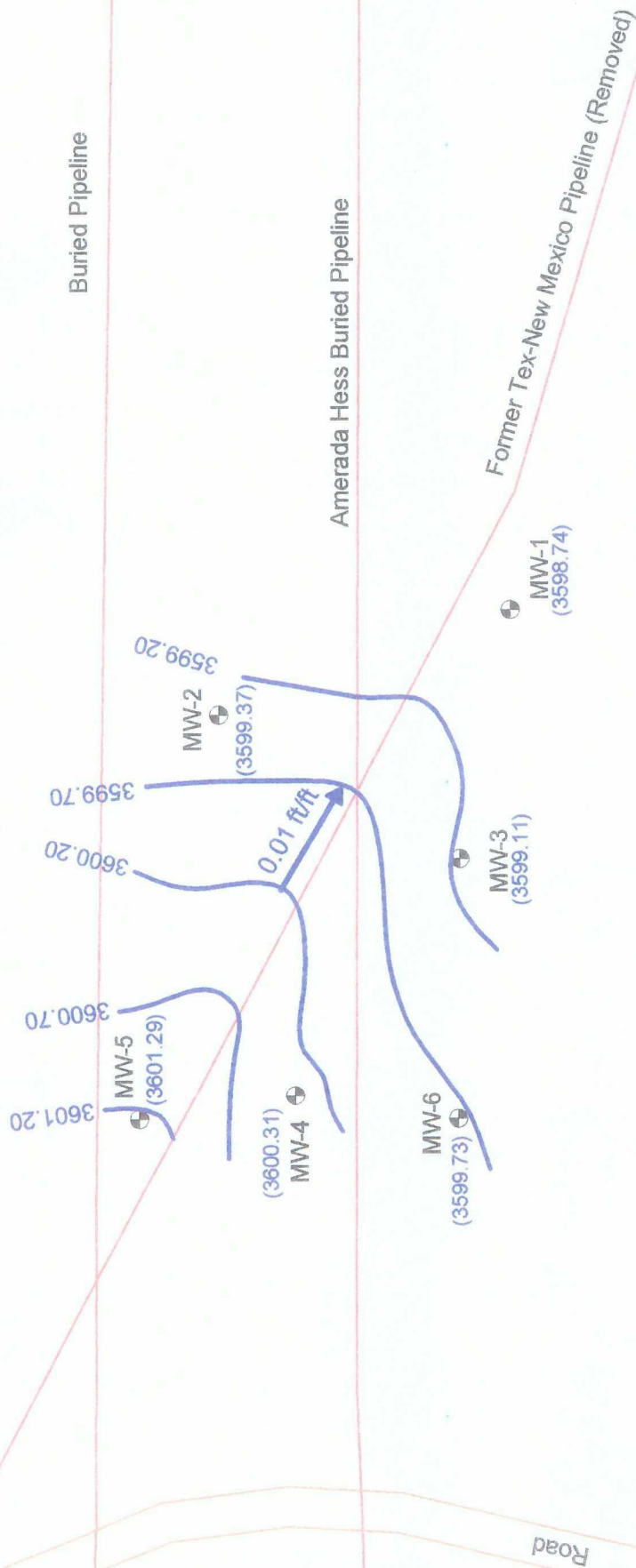
FIGURES



Figure 1

Site Location Map
 Plains Marketing, L.P.
 Monument 11
 Lea County, NM
 NIMCO Ref. # 1R-0120





NMOC Reference No. 1R-0120

Figure 2A
Inferred Groundwater
Gradient Map
(02/29/08)
Plains Marketing, L.P.
Monument 11
Lea County, NM

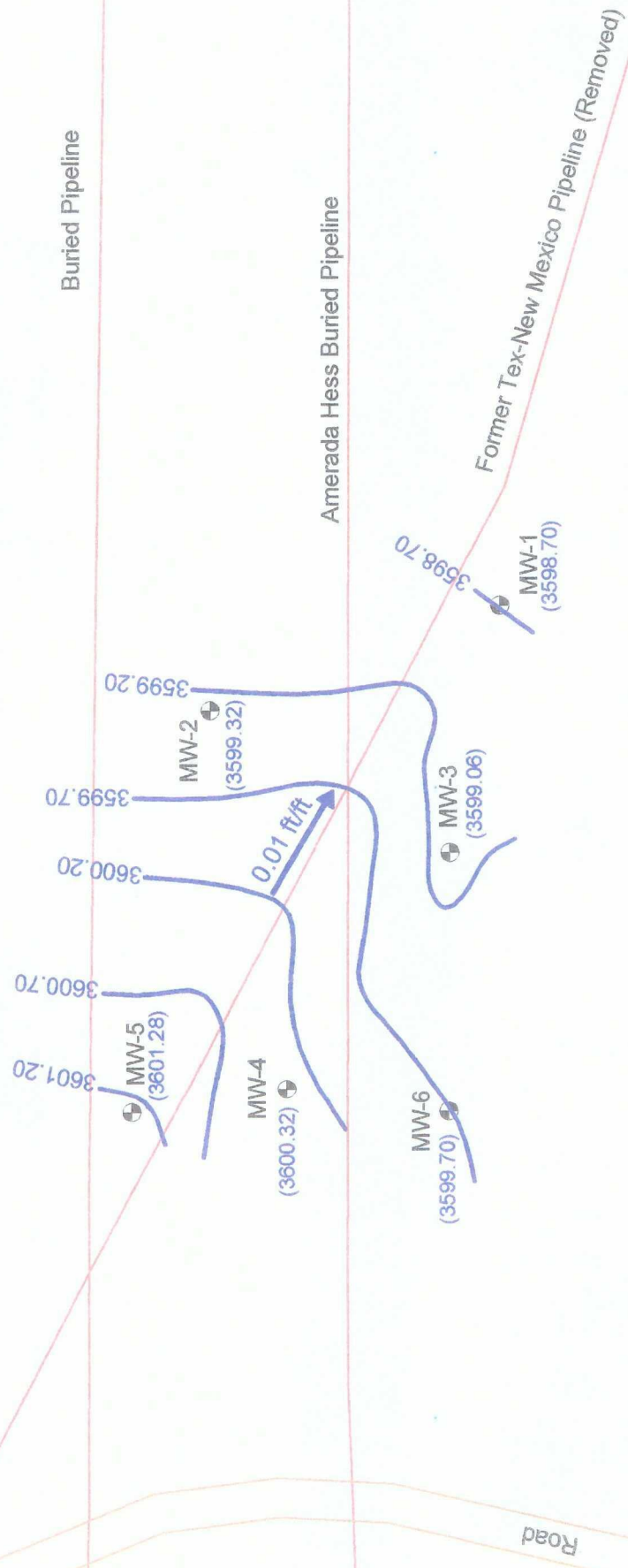
Groundwater Elevation (feet)
Groundwater Gradient and Magnitude
(3599.74)
0.001 ft/ft

Monitor Well Location
Pipeline
Groundwater Elevation Contour Line
Soil Boring Location

NOVA Safety and Environmental

Scale: 1" = 60'
October 8, 2008
SE 1/4 NE 1/4 Sec 30 T10S R07E
32° 38' 07.2" N 103° 16' 38.0" W






NOTE:
• Contour Interval = 0.5'
• GW Gradient Measured Between MW-5 and MW-1.

- Monitor Well Location
 - Pipeline
 - Groundwater Elevation Contour Line
 - Soil Boring Location
- (3599.74) Groundwater Elevation (feet)
0.001 ft/ft Groundwater Gradient and Magnitude

NIMOD Reference No. 1R-0120

Figure 2B
Inferred Groundwater
Gradient Map
(05/25/08)
Pinalis Marketing, L.P.
Monument 11
Lea County, NM



NOVA
SAFETY AND ENVIRONMENTAL

NOVA Safety and Environmental

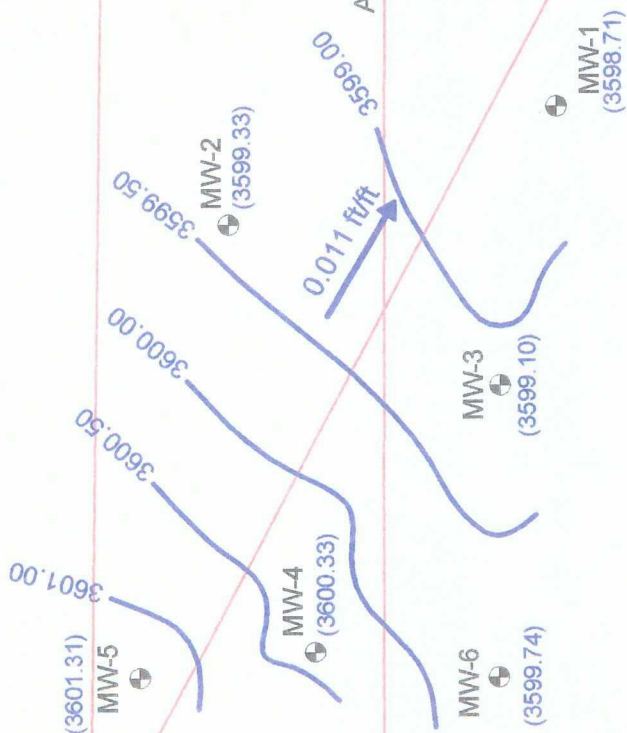
Scale: 1"= 80'	CAD By: DGC	Checked By: CDS
October 3, 2008	SE 1/4 NE 1/4 Sec 30 T19S R37E	
		32° 38' 07.2" N 103° 18' 59.0" W



Buried Pipeline

Amerada Hess Buried Pipeline

Former Tex-New Mexico Pipeline (Removed)



NOTE:

- Contour Interval = 0.5'
- GW Gradient Measured Between MW-5 and MW-1.

- Monitor Well Location
- Pipeline
- Groundwater Elevation Contour Line
- Soil Boring Location

(3599.74)
0.001 ft/ft
Groundwater Gradient and Magnitude

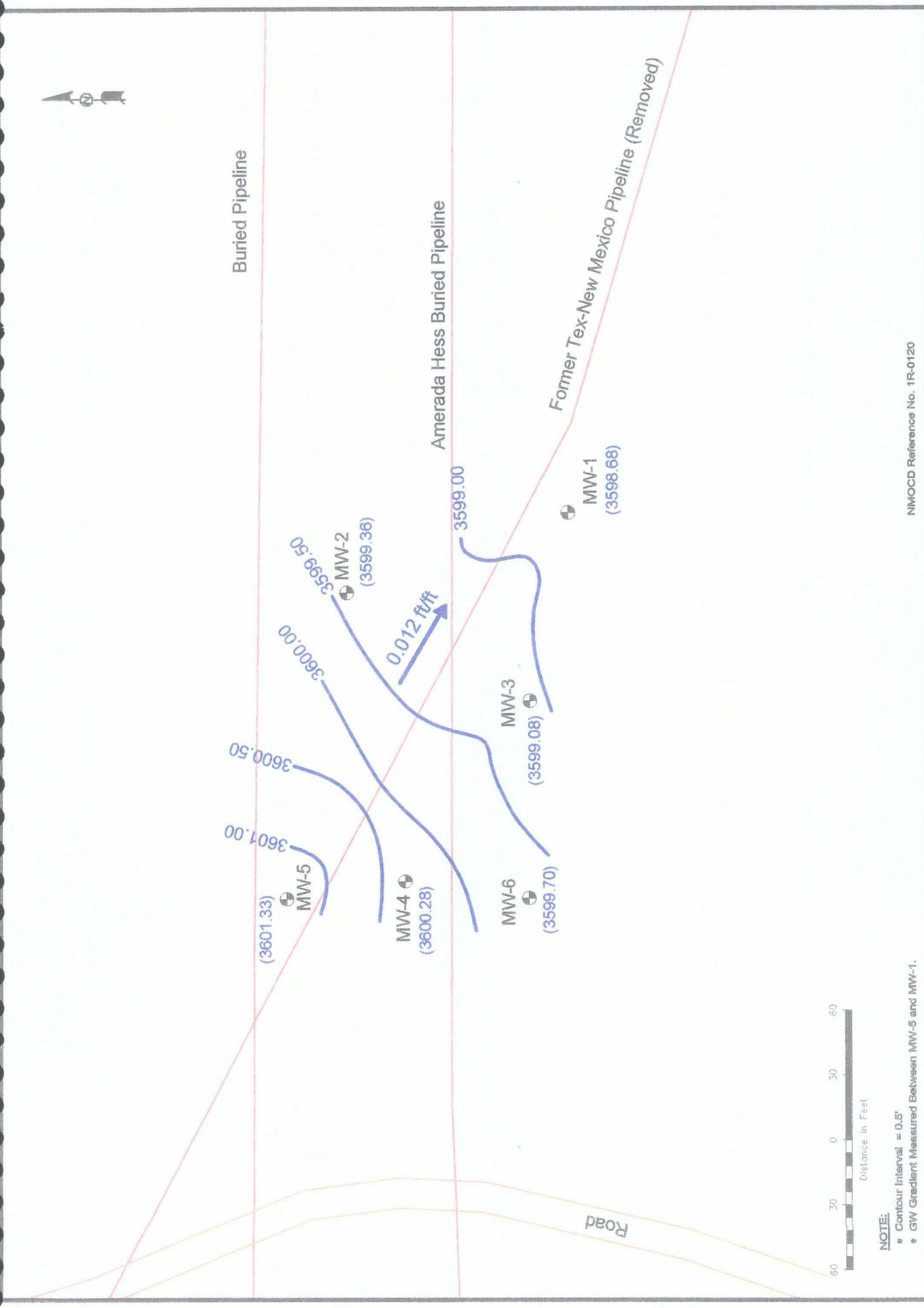
NMOCD Reference No. 1R-0120

Figure 2C
Inferred Groundwater
Gradient Map
(08/28/08)
Plains Marketing, L.P.
Monument 11
Lea County, NM

NOVA Safety and Environmental

Scale: 1" = 80'	CAD By: DGC	Checked By: CDS
October 5, 2008	SE (14 NE 14 Sec 30 T18S R27E	
	32° 38' 07.2" N 103° 16' 30.0" W	





NMOC Reference No. 1R-0120

NOVA Safety and Environmental

Scale: 1" = 60'

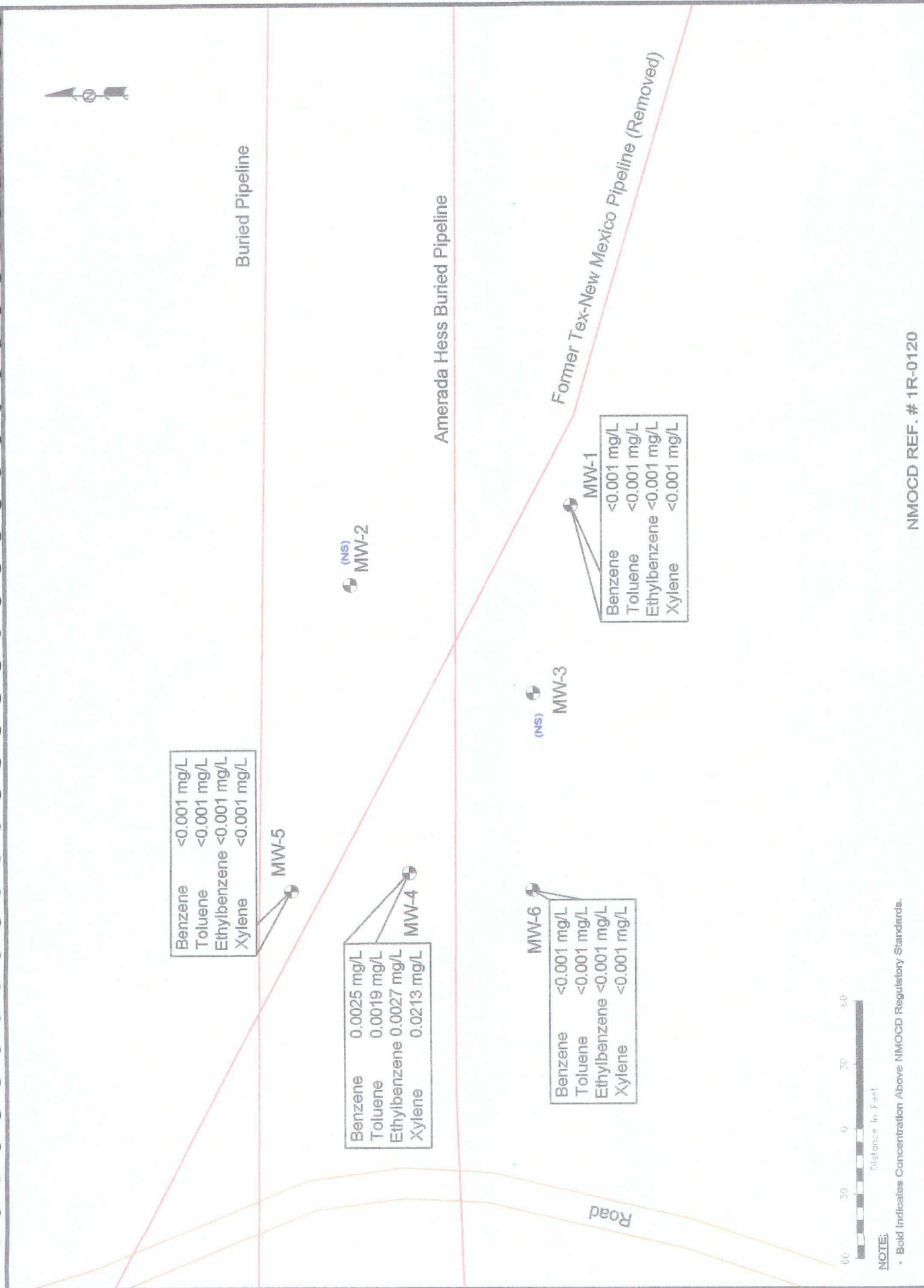
December 5, 2008

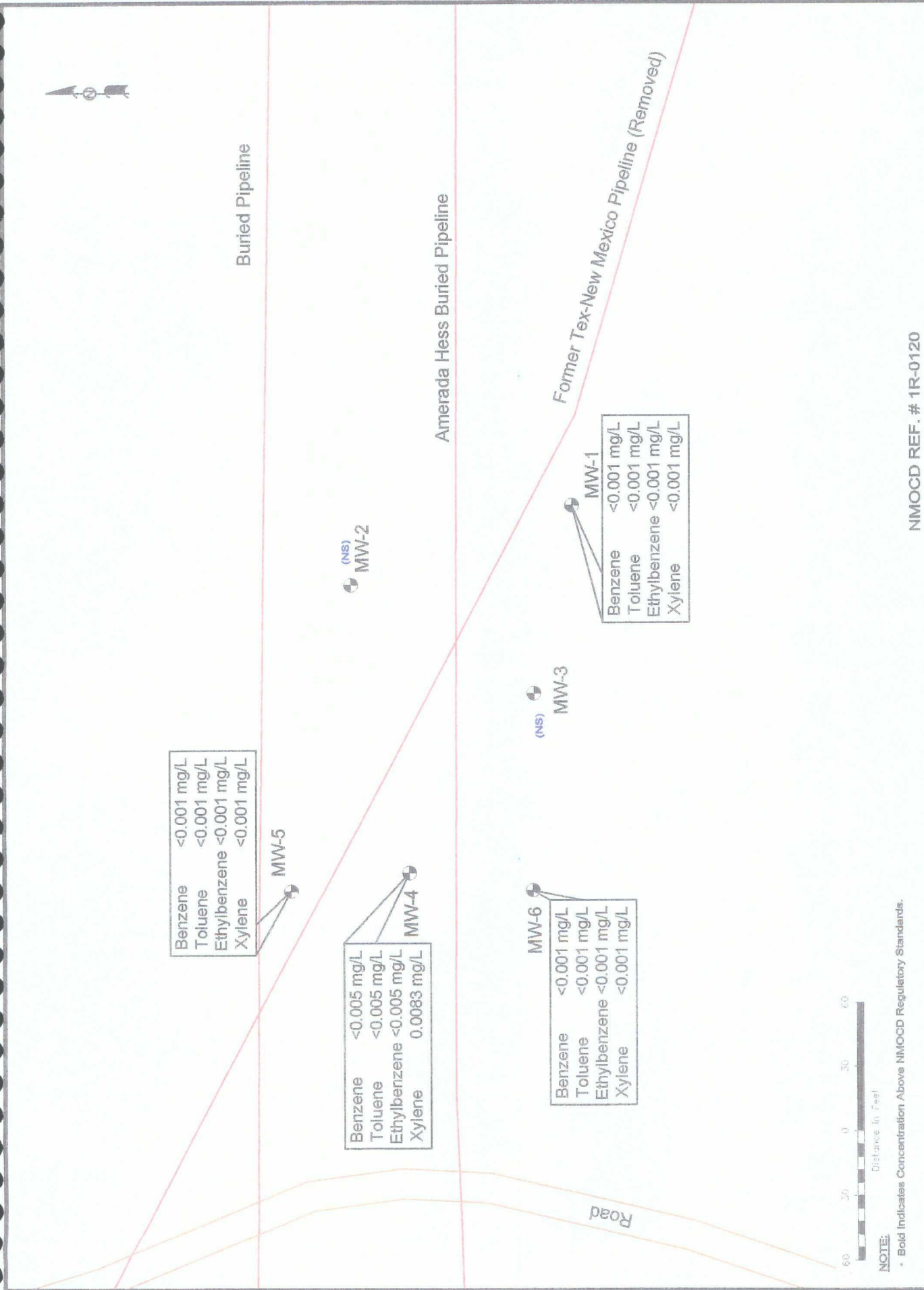
SE 1/4 NE 1/4 Sec 30 T18S R37E

32° 38' 07.2" N 103° 19' 58.0" W

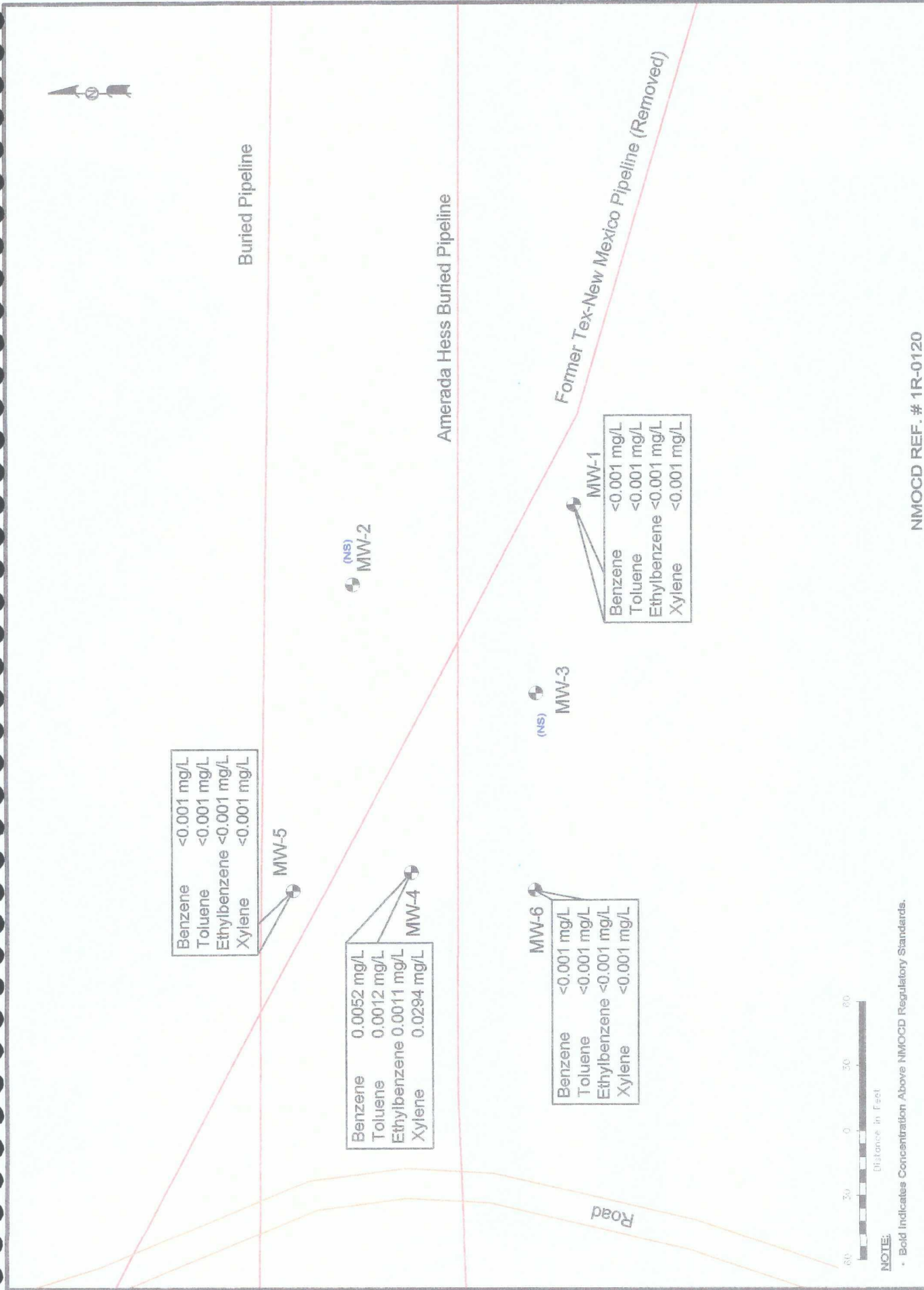
NOVA

safety and environmental





NMOCD REF. # 1R-0120



NMOCd REF. # 1R-0120

Figure 3C
Groundwater Concentration and Inferred PSH Extent Map (08/28/08)
Plains Marketing, L.P.
Monument #1
Lea County, NM

NOVA Safety and Environmental

Scale: 1" = 50'	CAD By: DGC	Checked By: CDS
October 8, 2009	SE 1/4 NE 1/4 Sec 30 T16S R37E	
27° 39' 07" N 103° 18' 50" W		



Benzene <0.001 mg/L
Toluene <0.001 mg/L
Ethylbenzene <0.001 mg/L
Xylene <0.001 mg/L

MW-5

Benzene <0.001 mg/L
Toluene <0.001 mg/L
Ethylbenzene <0.001 mg/L
Xylene 0.0092 mg/L

MW-4

Benzene <0.001 mg/L
Toluene <0.001 mg/L
Ethylbenzene <0.001 mg/L
Xylene <0.001 mg/L

MW-2

MW-6

Benzene <0.001 mg/L
Toluene <0.001 mg/L
Ethylbenzene <0.001 mg/L
Xylene <0.001 mg/L

MW-3

Benzene <0.001 mg/L
Toluene <0.001 mg/L
Ethylbenzene <0.001 mg/L
Xylene 0.0034 mg/L

MW-1

Benzene <0.001 mg/L
Toluene <0.001 mg/L
Ethylbenzene <0.001 mg/L
Xylene <0.001 mg/L

Former Tex-New Mexico Pipeline (Removed)

Amerada Hess Buried Pipeline

Buried Pipeline

Road



NOTE:

• Bold Indicates Concentration Above NMOC Regulatory Standards.

Monitor Well Location
Pipeline
Inferred PSH Extent
(NS) Not Sampled
<0.001
Constituent Concentration (mg/L)

NMOC REF. # 1R-0120

Figure 3D
Groundwater Concentration
and Inferred PSH Extent
Map (11/21/08)
Plains Marketing, L.P.
Monument 11
Lea County, NM

NOVA Safety and Environmental

Scale: 1" = 60'
CAD By: DCC
Checked By: RKR
December 15, 2008
SE 1/4 NE 1/4 Sec 30 T16S R37E

NOVA
Safety and Environmental

32° 38' 07.2" N 103° 16' 50.0" W

TABLES

TABLE 1
2007 / 2008 GROUNDWATER ELEVATION DATA

PLAINS MARKETING, L.P.
MONUMENT 11
LEA COUNTY, NEW MEXICO
NMOCD Reference #1R-0120

WELL NUMBER	DATE MEASURED	TOP OF CASING ELEVATION	DEPTH TO PRODUCT	DEPTH TO WATER	PSH THICKNESS	CORRECTED GROUNDWATER ELEVATION
MW - 1	02/22/07	3,624.90	-	26.24	0.00	3,598.66
MW - 1	05/17/07	3,624.90	-	26.22	0.00	3,598.68
MW - 1	08/28/07	3,624.90	-	26.17	0.00	3,598.73
MW - 1	11/26/07	3,624.90	-	26.17	0.00	3,598.73
MW - 1	02/26/08	3,624.90	-	26.16	0.00	3,598.74
MW - 1	05/26/08	3,624.90	-	26.20	0.00	3,598.70
MW - 1	08/28/08	3,624.90	-	26.19	0.00	3,598.71
MW - 1	11/21/08	3,624.90	-	26.22	0.00	3,598.68
MW - 2	02/22/07	3,624.91	-	25.52	0.00	3,599.39
MW - 2	05/17/07	3,624.91	-	25.56	0.00	3,599.35
MW - 2	08/28/07	3,624.91	-	25.57	0.00	3,599.34
MW - 2	11/26/07	3,624.91	-	25.56	0.00	3,599.35
MW - 2	02/21/08	3,624.91	-	23.82	0.00	3,601.09
MW - 2	02/26/08	3,624.91	-	25.54	0.00	3,599.37
MW - 2	05/26/08	3,624.91	-	25.59	0.00	3,599.32
MW - 2	08/28/08	3,624.91	-	25.58	0.00	3,599.33
MW - 2	11/21/08	3,624.91	-	25.55	0.00	3,599.36
MW - 3	02/02/07	3,623.90	-	24.82	0.00	3,599.08
MW - 3	05/17/07	3,623.90	-	24.84	0.00	3,599.06
MW - 3	08/28/07	3,623.90	-	24.87	0.00	3,599.03
MW - 3	11/26/07	3,623.90	-	24.90	0.00	3,599.00
MW - 3	02/26/08	3,623.90	-	24.88	0.00	3,599.02
MW - 3	05/26/08	3,623.90	-	24.93	0.00	3,598.97
MW - 3	08/28/08	3,623.90	-	24.89	0.00	3,599.01
MW - 3	11/21/08	3,623.90	-	24.91	0.00	3,598.99
MW - 4	02/22/07	3,624.02	23.06	23.20	0.14	3,600.94
MW - 4	03/05/07	3,624.02	23.05	23.11	0.06	3,600.96
MW - 4	03/27/07	3,624.02	23.15	23.19	0.04	3,600.86
MW - 4	05/08/07	3,624.02	23.22	23.38	0.16	3,600.78
MW - 4	05/17/07	3,624.02	23.29	23.31	0.02	3,600.73
MW - 4	06/11/07	3,624.02	23.34	23.52	0.18	3,600.65
MW - 4	07/11/07	3,624.02	-	23.49	0.00	3,600.53
MW - 4	08/28/07	3,624.02	-	23.49	0.00	3,600.53
MW - 4	09/18/07	3,624.02	-	23.68	0.00	3,600.34
MW - 4	10/19/07	3,624.02	23.53	23.55	0.02	3,600.49
MW - 4	11/09/07	3,624.02	-	23.71	0.00	3,600.31
MW - 4	11/26/07	3,624.02	-	23.72	0.00	3,600.30
MW - 4	01/11/08	3,624.02	-	23.78	0.00	3,600.24
MW - 4	02/21/08	3,624.02	-	23.82	0.00	3,600.20
MW - 4	02/26/08	3,624.02	-	23.71	0.00	3,600.31
MW - 4	04/17/08	3,624.02	-	23.82	0.00	3,600.20

TABLE 1
2007 / 2008 GROUNDWATER ELEVATION DATA

PLAINS MARKETING, L.P.
MONUMENT 11
LEA COUNTY, NEW MEXICO
NMOCD Reference #1R-0120

WELL NUMBER	DATE MEASURED	TOP OF CASING ELEVATION	DEPTH TO PRODUCT	DEPTH TO WATER	PSH THICKNESS	CORRECTED GROUNDWATER ELEVATION
MW - 4	05/26/08	3,624.02	-	23.70	0.00	3,600.32
MW - 4	07/03/08	3,624.02	-	23.62	0.00	3,600.40
MW - 4	07/16/08	3,624.02	-	23.81	0.00	3,600.21
MW - 4	08/01/08	3,624.02	-	23.72	0.00	3,600.30
MW - 4	08/05/08	3,624.02	-	23.69	0.00	3,600.33
MW - 4	08/28/08	3,624.02	-	23.69	0.00	3,600.33
MW - 4	10/03/08	3,624.02	-	24.70	0.00	3,599.32
MW - 4	10/15/08	3,624.02	-	23.89	0.00	3,600.13
MW - 4	10/22/08	3,624.02	-	24.44	0.00	3,599.58
MW - 4	10/28/08	3,624.02	-	23.70	0.00	3,600.32
MW - 4	11/06/08	3,624.02	-	23.69	0.00	3,600.33
MW - 4	11/13/08	3,624.02	-	23.65	0.00	3,600.37
MW - 4	11/21/08	3,624.02	-	23.74	0.00	3,600.28
MW - 5	02/22/07	3,625.24	-	23.40	0.00	3,601.84
MW - 5	05/17/07	3,625.24	-	23.59	0.00	3,601.65
MW - 5	08/28/07	3,625.24	-	23.82	0.00	3,601.42
MW - 5	11/26/07	3,625.24	-	23.90	0.00	3,601.34
MW - 5	02/26/08	3,625.24	-	23.95	0.00	3,601.29
MW - 5	05/26/08	3,625.24	-	23.96	0.00	3,601.28
MW - 5	08/28/08	3,625.24	-	23.93	0.00	3,601.31
MW - 5	11/21/08	3,625.24	-	23.91	0.00	3,601.33
MW - 6	02/22/07	3,623.71	-	23.89	0.00	3,599.82
MW - 6	05/17/07	3,623.71	-	23.91	0.00	3,599.80
MW - 6	08/28/07	3,623.71	-	23.97	0.00	3,599.74
MW - 6	11/26/07	3,623.71	-	23.99	0.00	3,599.72
MW - 6	02/26/08	3,623.71	-	23.98	0.00	3,599.73
MW - 6	05/26/08	3,623.71	-	24.01	0.00	3,599.70
MW - 6	08/28/08	3,623.71	-	23.97	0.00	3,599.74
MW - 6	11/21/08	3,623.71	-	24.01	0.00	3,599.70

* Complete Historical Tables are presented on the attached CD.

TABLE 2

2007 / 2008 CONCENTRATIONS OF BTEX IN GROUNDWATER

PLAINS MARKETING, L.P.
 MONUMENT 11
 LEA COUNTY, NEW MEXICO
 NMOCD Reference #1R-0120

All concentrations are in mg/L

SAMPLE DATE	SAMPLE DATE	SW 846 - 8260				
		BENZENE	TOLUENE	ETHYL-BENZENE	m, p - XYLENES	o - XYLENE
NMOCD Regulatory Limit		0.01	0.75	0.75	0.62	
MW - 1	02/22/07	<0.001	<0.001	<0.001	<0.001	
MW - 1	05/17/07	<0.001	<0.001	<0.001	<0.001	
MW - 1	08/28/07	<0.001	<0.001	<0.001	<0.001	
MW - 1	11/26/07	<0.001	<0.001	<0.001	<0.001	
MW - 1	02/26/08	<0.001	<0.001	<0.001	<0.001	
MW - 1	05/26/08	<0.001	<0.001	<0.001	<0.001	
MW - 1	08/28/08	<0.001	<0.001	<0.001	<0.001	
MW - 1	11/21/08	<0.001	<0.001	<0.001	<0.001	
MW - 2	11/26/07	<0.001	<0.001	<0.001	<0.001	
MW - 2	02/26/08	Not sampled due to sample reduction				
MW - 2	05/26/08	Not sampled due to sample reduction				
MW - 2	08/28/08	Not sampled due to sample reduction				
MW - 2	11/21/08	<0.001	<0.001	<0.001	<0.001	
MW - 3	11/26/07	<0.001	<0.001	<0.001	0.0018	
MW - 3	02/26/08	Not sampled due to sample reduction				
MW - 3	05/26/08	Not sampled due to sample reduction				
MW - 3	08/28/08	Not sampled due to sample reduction				
MW - 3	11/21/08	<0.001	<0.001	<0.001	0.0034	
MW - 4	01/08/07	<0.001	<0.001	0.010	0.095	
MW - 4	02/22/07	<0.001	<0.001	0.006	0.074	
MW - 4	05/17/07	<0.001	<0.001	0.003	0.031	
MW - 4	08/28/07	<0.005	<0.005	<0.005	<0.005	
MW - 4	11/26/07	<0.001	<0.001	<0.001	0.0023	
MW - 4	02/26/08	0.0025	0.0019	0.0027	0.2130	
MW - 4	05/26/08	<0.005	<0.005	<0.005	0.0083	
MW - 4	08/28/08	0.0052	0.0012	0.0011	0.0294	
MW - 4	11/21/08	<0.001	<0.001	<0.001	0.0092	
MW - 5	02/22/07	<0.001	<0.001	<0.001	<0.001	
MW - 5	05/17/07	<0.001	<0.001	<0.001	<0.001	
MW - 5	08/28/07	<0.001	<0.001	<0.001	<0.001	
MW - 5	11/26/07	<0.001	<0.001	<0.001	<0.001	
MW - 5	02/26/08	<0.001	<0.001	<0.001	<0.001	
MW - 5	05/26/08	<0.001	<0.001	<0.001	<0.001	
MW - 5	08/28/08	<0.001	<0.001	<0.001	<0.001	
MW - 5	11/21/08	<0.001	<0.001	<0.001	<0.001	

TABLE 2

2007 / 2008 CONCENTRATIONS OF BTEX IN GROUNDWATER

PLAINS MARKETING, L.P.
 MONUMENT 11
 LEA COUNTY, NEW MEXICO
 NMOCD Reference #1R-0120

All concentrations are in mg/L

SAMPLE DATE	SAMPLE DATE	SW 846 - 8260				
		BENZENE	TOLUENE	ETHYL- BENZENE	m, p - XYLENES	o - XYLENE
NMOCD Regulatory Limit		0.01	0.75	0.75	0.62	
MW - 6	02/22/07	<0.001	<0.001	<0.001	<0.001	
MW - 6	05/17/07	<0.001	<0.001	<0.001	<0.001	
MW - 6	08/28/07	<0.001	<0.001	<0.001	<0.001	
MW - 6	11/26/07	<0.001	<0.001	<0.001	<0.001	
MW - 6	02/26/08	<0.001	<0.001	<0.001	<0.001	
MW - 6	05/26/08	<0.001	<0.001	<0.001	<0.001	
MW - 6	08/28/08	<0.001	<0.001	<0.001	<0.001	
MW - 6	11/21/08	<0.001	<0.001	<0.001	<0.001	

** Complete Historical Tables are presented on the attached CD.*

POLYNUCLEAR AROMATIC HYDROCARBON CONCENTRATIONS IN GROUNDWATER - 2008

MONUMENT 11

LEA COUNTY, NEW MEXICO

NMOC D REFERENCE NUMBER R1-0120

All water concentrations are reported in mg/L

[illegible]

APPENDICES

APPENDIX A:
Form C-141

District I
1625 N. French Dr., Hobbs, NM 88240
District II
1301 W. Grand Avenue, Artesia, NM 88210
District III
1000 Rio Brazos Road, Aztec, NM 87410
District IV
1220 S. St. Francis Dr., Santa Fe, NM 87505

State of New Mexico
Energy Minerals and Natural Resources

Oil Conservation Division
1220 South St. Francis Dr.
Santa Fe, NM 87505

Form C-141
Revised October 10, 2003

Submit 2 Copies to appropriate
District Office in accordance
with Rule 116 on back
side of form

Release Notification and Corrective Action

OPERATOR

☒ Initial Report ☐ Final Report

Name of Company	Plains Pipeline, LP	Contact:	Camille Reynolds
Address:	3705 E. Hwy 158, Midland, TX 79706	Telephone No.	505-441-0965
Facility Name	Monument # 11	Facility Type:	Pipeline
Surface Owner:	New Mexico State Land Office	Mineral Owner	Lease No.

LOCATION OF RELEASE

Unit Letter	Section	Township	Range	Feet from the	North/South Line	Feet from the	East/West Line	County
A	30	19S	37E					Lea

Latitude 32 degrees 38' 9.2" Longitude 103 degrees 17' 2.4"

NATURE OF RELEASE

Type of Release: Unknown	Volume of Release: Unknown	Volume Recovered: Unknown
Source of Release:	Date and Hour of Occurrence: Unknown	Date and Hour of Discovery:
Was Immediate Notice Given? Yes <input type="checkbox"/> No <input type="checkbox"/> Not Required	If YES, To Whom?	
By Whom?	Date and Hour	
Was a Watercourse Reached? <input type="checkbox"/> Yes <input checked="" type="checkbox"/> No	If YES, Volume Impacting the Watercourse.	
If a Watercourse was Impacted, Describe Fully.*		
Describe Cause of Problem and Remedial Action Taken.*		
Describe Area Affected and Cleanup Action Taken.* NOTE: Texas-New Mexico Pipeline was the owner/operator of the pipeline system at the time of the release, initial response information is unavailable.		
I hereby certify that the information given above is true and complete to the best of my knowledge and understand that pursuant to NMOCD rules and regulations all operators are required to report and/or file certain release notifications and perform corrective actions for releases which may endanger public health or the environment. The acceptance of a C-141 report by the NMOCD marked as "Final Report" does not relieve the operator of liability should their operations have failed to adequately investigate and remediate contamination that pose a threat to ground water, surface water, human health or the environment. In addition, NMOCD acceptance of a C-141 report does not relieve the operator of responsibility for compliance with any other federal, state, or local laws and/or regulations.		
Signature:		OIL CONSERVATION DIVISION
Printed Name: Camille Reynolds	Approved by District Supervisor:	
Title: Remediation Coordinator	Approval Date:	Expiration Date:
E-mail Address: cgreynolds@paalp.com	Conditions of Approval:	Attached <input type="checkbox"/>
Date: 3/21/2005	Phone: (505)441-0965	

* Attach Additional Sheets If Necessary