

Form 3160-5
(April 2004)UNITED STATES
DEPARTMENT OF THE INTERIOR
BUREAU OF LAND MANAGEMENT

JUN -2 2009

FORM APPROVED
OMB No. 1004-0137
Expires: March 31, 2007

SUNDRY NOTICES AND REPORTS ON WELLS

Do not use this form for proposals to drill or to re-enter an abandoned well. Use Form 3160-3 (APD) for such proposals.

SUBMIT IN TRIPLICATE- Other instructions on reverse side.

1. Type of Well

☐ Oil Well☐ Gas Well☐ Other

2. Name of Operator

C O G OPERATING LLC

3a. Address

550 WEST TEXAS SUITE 1300 75701

3b. Phone No. (include area code)

Midland

4. Location of Well (Footage, Sec., T., R., M., or Survey Description)

SEC 22 - T-18S R 29 E

1880 F.S.L. 280 F.W.L.

5. Lease Serial No.

NMLCO 67132

6. If Indian, Allottee or Tribe Name

7. If Unit or CA/Agreement, Name and/or No.

8. Well Name and No.

9. API Well No.

10. Field and Pool, or Exploratory Area

TURKEY TRACK 2R15 GB SA

11. County or Parish, State

EDDY CO

12. CHECK APPROPRIATE BOX(ES) TO INDICATE NATURE OF NOTICE, REPORT, OR OTHER DATA

TYPE OF SUBMISSION

TYPE OF ACTION

☒ Notice of Intent☐ Subsequent Report☐ Final Abandonment Notice☐ Acidize☐ Alter Casing☐ Casing Repair☐ Change Plans☐ Convert to Injection☐ Deepen☐ Fracture Treat☐ New Construction☒ Plug and Abandon☐ Plug Back☐ Production (Start/Resume)☐ Reclamation☐ Recomplete☐ Temporarily Abandon☐ Water Disposal☐ Water Shut-Off☐ Well Integrity☐ Other

13. Describe Proposed or Completed Operation (clearly state all pertinent details, including estimated starting date of any proposed work and approximate duration thereof. If the proposal is to deepen directionally or recompleate horizontally, give subsurface locations and measured and true vertical depths of all pertinent markers and zones. Attach the Bond under which the work will be performed or provide the Bond No. on file with BLM/BIA. Required subsequent reports shall be filed within 30 days following completion of the involved operations. If the operation results in a multiple completion or recompleation in a new interval, a Form 3160-4 shall be filed once testing has been completed. Final Abandonment Notices shall be filed only after all requirements, including reclamation, have been completed, and the operator has determined that the site is ready for final inspection.)

1- MISC - DILUTED TO 1040'

2- SPOT 15 SAKS CNT 1040-TO-900'-

3- PUMP - THROUGH PKR. AT 100' ESTB RATE 1000 PSI-5BBLS AM-D-SIP. 200 PSI - WILL PUMP 200 TO 300 SAKS CNT - HESITATE SBZ. AT 2BBLS AM-D-AT 600 PSI 200 SIP. WILL ATTEMPT LOCKDOWN SBZ DISPLACE CNT 200' AT HRS. THEN-MONITOR-WELL TWO DAYS

WELL WAS PRESSURE TESTED TO 1000 PSI BELOW PERFS AT 418'

WATER FLOW
FROM PER14. I hereby certify that the foregoing is true and correct
Name (Printed/Typed)

RANDALL MINER

Title

AGENT

Signature

Randall Miner

Date

5-19-09

THIS SPACE FOR FEDERAL OR STATE OFFICE USE

Approved by

Conditions of approval, if any, are attached. Approval of this notice does not warrant or certify that the applicant holds legal or equitable title to those rights in the subject lease which would entitle the applicant to conduct operations thereon.

Title

Office

Date

MAY 20 2009

Title 18 U.S.C. Section 1001 and Title 43 U.S.C. Section 1212, make it a crime for any person knowingly and willfully to make to any department or agency of the United States any false, fictitious or fraudulent statements or representations as to any matter within its jurisdiction.

JAMES A. MOSE
SUPERVISOR-EP5

(Instructions on page 2)

05/14/2007 17:15 IFAX fax@claytonwilliams.com

→ Howard, Dawn

14-00000

84/23/2007 14:41 5053930/20

~~EM-RD-DCD~~

PAGE 06/07

PLUGGING & ABANDONMENT WORKSHEET

IS STRONG COUNTRY

**OPERATOR
LEASENAME**

WHEEL

SPECT

TWN

RING

FROM

NS L

EWL

10.

FORMATION @ TD

PEND:

FORMATION @ PETRO

NOTE

CMT 01	SIZE	SET @	TOC	TOC DETERMINED BY
SURFACE				
INTMED 1				
INTMED 2				
PROD				
	SIZE	TOP	BOT	TOC DETERMINED BY
LINER 1				
LINER 2				
	CUT & FULL @			TOP - BOTTOM
INTMED 1			FLARE	-
INTMED 2			STRAIGHT	-
PROD				

6. ADVANCED POLICE PRACTICE

[illegible]

FLUG	TYPE FLUG	SACCS CLAT	DEPTH
FLUG01	OR	25 EKS	500'
FLUG02	BACK	30 EKS	600-1200'
FLUG03	CORRY		500'
FLUG04	CMP	25 EKS	500'
FLUG05	STW	30 EKS	400-500'
FLUG06	WIDE FLUG	300 EKS	200
FLUG07	STW	10 EKS	0-10'
FLUG08			
FLUG09			
FLUG10			
FLUG11			
FLUG12			
FLUG13			
FLUG14			
FLUG15			
FLUG16			
FLUG17			
FLUG18			
FLUG19			
FLUG20			
FLUG21			
FLUG22			
FLUG23			
FLUG24			
FLUG25			
FLUG26			
FLUG27			
FLUG28			
FLUG29			
FLUG30			
FLUG31			
FLUG32			
FLUG33			
FLUG34			
FLUG35			
FLUG36			
FLUG37			
FLUG38			
FLUG39			
FLUG40			
FLUG41			
FLUG42			
FLUG43			
FLUG44			
FLUG45			
FLUG46			
FLUG47			
FLUG48			
FLUG49			
FLUG50			
FLUG51			
FLUG52			
FLUG53			
FLUG54			
FLUG55			
FLUG56			
FLUG57			
FLUG58			
FLUG59			
FLUG60			
FLUG61			
FLUG62			
FLUG63			
FLUG64			
FLUG65			
FLUG66			
FLUG67			
FLUG68			
FLUG69			
FLUG70			
FLUG71			
FLUG72			
FLUG73			
FLUG74			
FLUG75			
FLUG76			
FLUG77			
FLUG78			
FLUG79			
FLUG80			
FLUG81			
FLUG82			
FLUG83			
FLUG84			
FLUG85			
FLUG86			
FLUG87			
FLUG88			
FLUG89			
FLUG90			
FLUG91			
FLUG92			
FLUG93			
FLUG94			
FLUG95			
FLUG96			
FLUG97			
FLUG98			
FLUG99			
FLUG00			

7D

COG Operating LLC

BEFORE

Lease & Well #

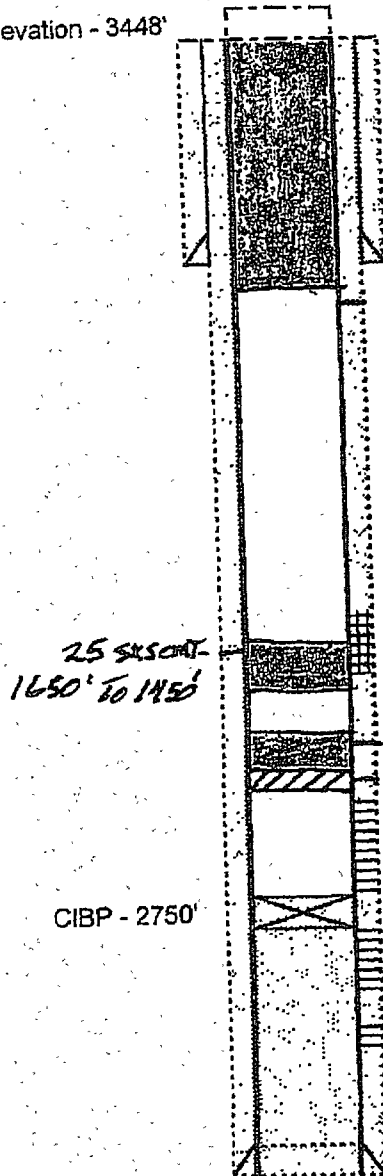
Denton Federal #6

Spud - 4/12/82

Elevation - 3448'

KB -

drill out to 1040



8 5/8" 23# @ 368', C/w 400 skx CI C 2% CC, circ cmt.

50 sks 4/8 To Surface

1430 - 1614', frac w/40,000 gal, 50,000 # sd.
Squeezed w/??sx cmt.25 sks cmt
1650' to 1750'25 sks cmt 1950' to 1750'
CIBP 1950'

2034 - 2660

2034-70_Frac'd w/20,000 gal, 25,000 # sd
2514-2872_Frac'd w/40,000 gal, 50,000 # sd

CIBP - 2750'

2758-2872

2930-40, frac w/20,000 gal, 25,000 # sd

4 1/2", 10.5# @ 3,138'

C/w 475 skx 50/50/6, 320 sks CI C, circ cmt.